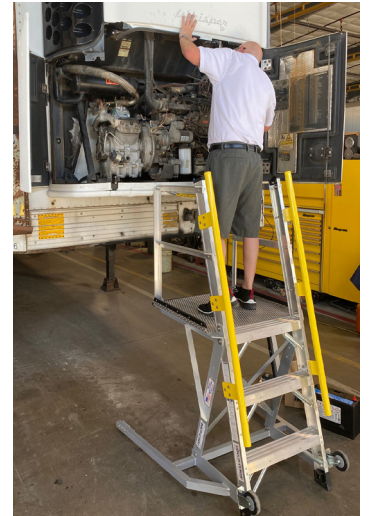


# LOCKNCLIMB®

## Ergonomic Safety Ladders for Refrigeration and Box Truck Service



LockNClimb's 42" tall **42LNCTRKENG** platform ladders with yellow safety handrails and patented stable base, allow unparalleled access and working comfort when servicing engines, high areas around vans, stepping up and through the trailer cargo doors, and many maintenance points on

LockNClimb's 34" tall **34LNC-TRKENG** platform ladder allows stable access to rear mechanical.

### LockNClimb Ladder Specifications

OSHA rated 300-lb. Special Purpose • Meets or exceeds ANSI specifications • Rubber padding protects paint • Slip-resistant platforms provide durable comfort for extended standing • Patented industrial 6061-grade aluminum support bases • Stickers indicate OSHA/ANSI compliance • LockNClimb ladders have been "designed by mechanics for use by mechanics" following years of field testing and development. • Durability in the industry is unmatched with a .1% repair rate after 3 years of continuous daily service. • Made in the U.S.A.



Made one at a time  
by skilled craftsmen  
in the U.S.A.

Contact:

Jeff Green

LockNClimb, LLC

2500 West Laurel Street

Independence, KS 67301

(620) 332.4198

jeffg@locknclimb.com

Office: (620) 577-2577



The **LNCEXTTRKFIBER2** is a 52-lb. fiberglass ladder that extends from 8'3" to 13'3" to allow easy working access to refrigeration units over cabs and on back of trailers, running lights and upper service points. Aluminum guides and catches. Patented industrial 6061-grade aluminum support base and frame.

**13LNCTRK** is 13-feet tall and easily rolled by one person into position where the patented 6061-aluminum base extends out and locks into position. The ladder is then slid into position on replaceable brass and rubber feet. Three-point contact climbing is facilitated by the yellow safety handrails.

## Lightweight Field Service ladders



These ladders can be used in the shop or can be carried in the vehicle for field service. The **LNCEXTTRKFIBER2** is a 52-lb. fiberglass ladder extends from 8 feet to 13 feet to reach the reefer unit over the cab or other maintenance points around the truck. The 5-foot **5MINIPYLON** and the 6-foot **6LNCPYLON** ladders are easily rolled in the shop or on location. They feature extra wide treads for comfortable standing and allow the technician to face work using OSHA recommended "between the rails" posture.

[www.truckingladders.com](http://www.truckingladders.com)