



# PRODUCT SPECIFICATIONS



## ■ History

Our first **J&K Cabinetry** company was originated in Atlanta, Georgia back in 2003, with our goal of providing our customers with the highest quality of cabinets available at an affordable price. We are also the manufacturer for our own J&K's distinctive and stylish line of kitchen cabinets and bathroom vanities.

## ■ Products

All of J&K's cabinets are ready-to-assemble (RTA), ready-to-build (RTB), and semi-customizable to our customers' specific needs.

Our cabinets and vanities are constructed with 100% solid wood doors and frames, 1/2" to 5/8" thick plywood boxes, soft-close metal door hinges, full-extension drawers with soft-close metal glides and more. We insist on making all these 'optional upgrades' a necessary standard, efficiently improving the overall quality, functionality, durability and value of our products without adding the burden of higher prices for our customers.



# Table of Contents

---

---

<b>2</b>	<b>Door Styles &amp; Finishes</b>
4	Environmental Commitment
<b>5</b>	<b>Finest Furniture Finishes</b>
6	Superior Construction
<b>7</b>	<b>Standard Features</b>
8	J&K Specification & Nomenclature
<b>9</b>	<b>J&amp;K Cabinet Dimensions</b>
10	Warranty
<b>12</b>	<b>Maintenance &amp; Care</b>
13	Base Cabinets
<b>20</b>	<b>Wall Cabinets</b>
33	Glass Shelf & Insert
<b>34</b>	<b>Pantry &amp; Oven Cabinets</b>
36	Storage & Organization
<b>39</b>	<b>Hoods &amp; Specialty Cabinets</b>
41	Bathroom Vanities
<b>47</b>	<b>Dummy Doors, Drawers &amp; Replacements</b>
48	Panels & Fillers
<b>51</b>	<b>Moldings</b>
57	Valances & Decor Blocks
<b>59</b>	<b>Onlays, Corbels &amp; Posts</b>

# DOOR STYLES & FINISHES

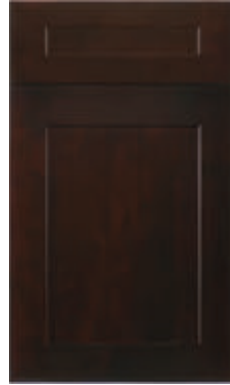
## ■ CONTEMPORARY



**S8**  
White



**S5**  
Castle Grey



**S1**  
Java

*Notes: Constructed with ALL-WOOD reversed raised panel door for S8, S5, S1.*

## ■ TRADITIONAL



**M01**  
Chocolate

**\*Note:** Availability for a particular product style and color may vary depending on showroom locations. Please check with your local *J&K Cabinetry* showroom or dealer for current availability before planning your projects.

## ■ TRANSITIONAL



**H9**  
Pearl



**K8**  
Espresso



**K3**  
Greige



**E1**  
Dove



**E2**  
Charcoal

**\*Note:** The photography and color samples shown in this catalog/specbook have been reproduced as accurately as printing technologies permit and are for representation only. To ensure the highest satisfaction, we strongly recommend you view an actual product sample prior to ordering cabinetry.

**\*Note:** Natural wood characteristics such as gum pockets, streaks and pin knots may be visible, particularly with some of our light paints. These characteristics tend to be more pronounced on the backs of our drawers and doors.

# ENVIRONMENTAL COMMITMENT



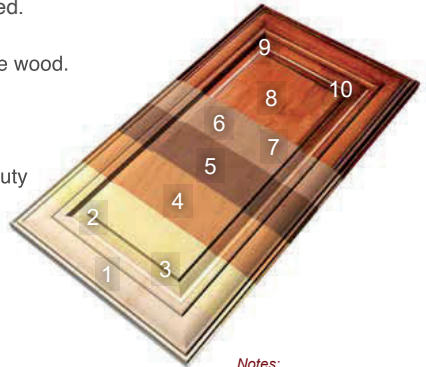
We believe that a healthy environment is the backbone to the happy lives of our customers and our society. In addition to our continued effort to improve our product qualities and values, J&K Cabinetry is committed to manufacturing and selling environmental-friendly and healthy products to our customers.

J&K Cabinetry's hardwood-plywood materials are compliant with California 93120, Phase 2 (CARB 2) standard for formaldehyde. We also use AkzoNoble, a leading global company in sustainable paints and coatings, for our cabinet finishes. Our products are KCMA certified (for all J&K-assembled cabinets).

# FINEST FURNITURE FINISHES

■ **J&K's solid wood cabinet finishes are processed through the following excellent craftsmanship details:**

1. The finest solid wood is sanded until smooth and vacuumed.
2. An equalizer stain is applied to balance the base color of the wood.
3. A toner is applied to establish color uniformity.
4. A deep penetrating stain is applied to reveal the hidden beauty of the natural grain.
5. All stained surfaces are hand-rubbed and wiped of excess stain and then slowly air-dried.
6. A wood sealer is applied, penetrating all exposed wood surfaces for uniform protection.
7. All surfaces are hand-sanded, providing a smooth, consistent surface.
8. A glaze is applied by hand (if applicable).
9. A color consistency examination is performed with additional touch-ups, if needed.
10. A final protective top coat is applied, maximizing resistance to scuffing, moisture, fading and most household chemicals.



*Notes:  
NOT Actual Product:  
Image For Reference Only.*

■ **Natural Wood Characteristics:**



Arce



Burl Grain



Open Knots



Bird's Eye



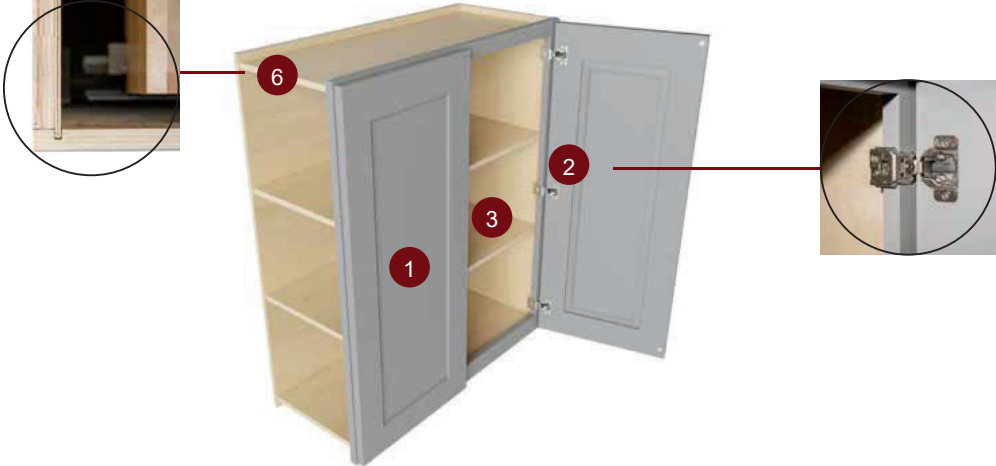
Mineral Streaks



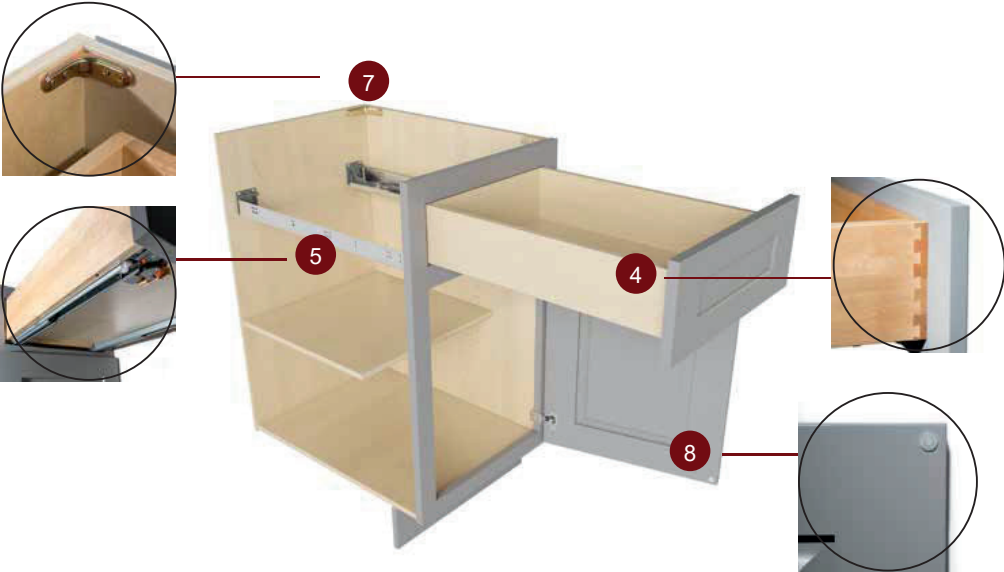
Heartwood

**Note:** All solid wood may contain natural "imperfections," such as variations in color, grain, mineral streaks and knots.

# SUPERIOR CONSTRUCTION



Wall Cabinet with two doors in Castle Grey (S5).



Base Cabinet with one drawer and one door in Castle Grey (S5).

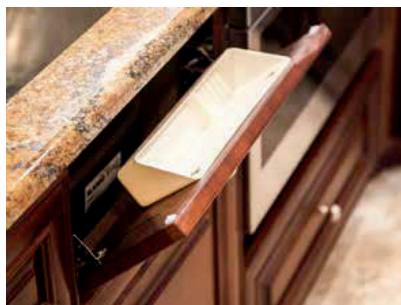


# STANDARD FEATURES

■ All J&K's cabinets and vanities are superiorly constructed with 100% solid wood and proudly come with the following **STANDARD** features:

1. **DOOR PANEL** – 3/4" thick solid wood, full overlay door.
2. **DOOR HINGE** – 6-way adjustable, soft-close metal and hidden Euro-style.
3. **ADJUSTABLE SHELF** – 3/4" thick cabinet-grade plywood, clear coat finish on all sides and edges and metal shelf rests.
4. **DRAWERS** – 5/8" thick solid wood on all sides, full extension pull-out and dovetail construction.
5. **DRAWER GLIDE** – Full extension pull-out, soft-close metal and concealed under mount.
6. **PLYWOOD BOX** – 5/8" thick cabinet-grade plywood, clear coat finish on interior sides and matching color finish on exterior sides.
7. **METAL BRACKET** – Corner bracket reinforcements in base cabinets for maximum stability.
8. **DOOR BUMPER** – Promotes quiet-closing and reduces slamming for maximum durability.

■ Tilt-out Trays have been another upgrade and **STANDARD** feature in all of J&K's Kitchen Sink Base and Vanity Sink Cabinets.



## NOTE:

As we continue to improve our product qualities and designs, the actual functionality of *Door Hinges* and *Drawer Glides* may vary slightly between existing and newest product styles and finishes. Please check with your local J&K Cabinetry showroom or dealer for the most current updates.

# J&K SPECIFICATION & NOMENCLATURE

All of J&K's cabinet dimensions come in 3" increments ranging from 9" to 42" in width for regular Base Cabinets and Wall Cabinets. Height and depth usually come in standard (and unlisted) sizes. Other non-standard or special dimensions are either fully listed or unspecified.

## Kitchen **Base Cabinets**

with standard unlisted height and depth:

**B12**

=

**B, 12, 34-1/2, 24**

=

**Letter Code, Width, Height, Depth**

## Kitchen **Wall Cabinets**

with standard unlisted depth:

**W3036**

=

**W, 30, 36, 12**

=

**Letter Code, Width, Height, Depth**

## Bathroom **Vanity Cabinets**

with standard unlisted height:

**FA2421**

=

**FA, 24, 33, 21**

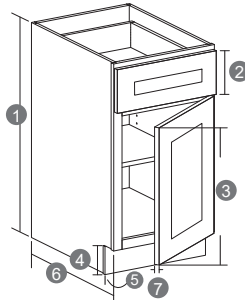
=

**Letter Code, Width, Height, Depth**

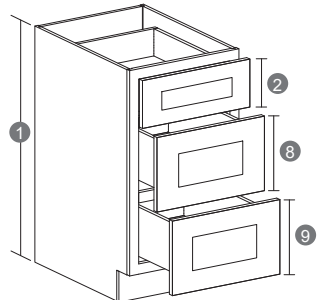
# J&K CABINET DIMENSIONS

## KITCHEN CABINET DIMENSION

- ① Standard 34-1/2"
- ② 6" on K10, M01, A7, K8, K3  
7" on J5, CO66, S1, S2, S5, S8, H3, H8, H9, E1, E2
- ③ 23" on K10, M01, A7, K8, K3  
22" on J5, CO66, S1, S2, S5, S8, H3, H8, H9  
21-7/8" on E1, E2
- ④ Standard 4-1/2"
- ⑤ Standard 2-1/2"
- ⑥ Standard 24" (To the face frame)
- ⑦ Standard 3/4"
- ⑧ 11-3/8" on K10, M01, A7, K8, K3  
10-7/8" on J5, CO66, S1, S2, S5, S8, H3, H8, H9  
10-3/4" on E1, E2
- ⑨ 11-3/8" on K10, M01, A7, K8, K3  
10-7/8" on J5, CO66, S1, S2, S5, S8, H3, H8, H9  
10-3/4" on E1, E2



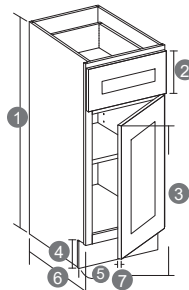
**B18**



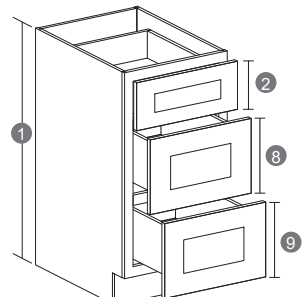
**DB21-3**

## VANITY CABINET DIMENSION

- ① Standard 33"
- ② 6" on K10, M01, A7, K8, K3  
7" on J5, CO66, S1, S2, S5, S8, H3, H8, H9, E1, E2
- ③ 21-3/8" on K10, M01, A7, K8, K3  
20" on J5, CO66, S1, S2, S5, S8, H3, H8, H9  
18" on E1, E2
- ④ Standard 4-1/2"
- ⑤ Standard 2-1/2"
- ⑥ Standard 21" (To the face frame)
- ⑦ Standard 3/4"
- ⑧ 10-3/8" on K10, M01, A7, K8, K3  
10-3/16" on J5, CO66, S1, S2, S5, S8, H3, H8, H9  
10" on E1, E2
- ⑨ 10-3/8" on K10, M01, A7, K8, K3  
10-3/16" on J5, CO66, S1, S2, S5, S8, H3, H8, H9  
10" on E1, E2



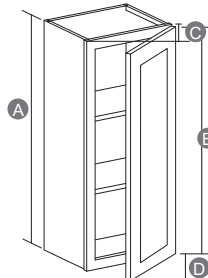
**SVA09B**



**SVA21D**

## WALL CABINET DIMENSION

- A 36"
- B 35-1/2" (Door dim)  
35-3/16" on E1, E2
- C 18"
- D 17-3/4" (Door dim)  
17-11/16" on E1, E2



**W1836**

**Notes:**

Vanity FA#### Cabinets, 1/8" – 1/2" deviation expected.

Door opening direction: Flip the Wall Cabinet to change the hinge side.

Unscrew the Base Cabinet door to switch hinge side.



# J&K FIVE YEAR LIMITED WARRANTY

J&K CABINETRY ("J&K") extends the following limited warranty on all cabinets manufactured and sold by J&K within the United States and Canada. This warranty does not cover cabinets sold or shipped outside of the United States and Canada. This Limited Warranty is only applicable to Products sold to the original purchasing consumer. J&K warrants that all cabinets purchased from J&K will be free from all unnatural defects in material and workmanship in accordance with J&K quality standards sheet under normal residential use for 5 years from the date of the original purchase or as long as the original purchasing consumer owns the home in which such cabinets are installed, whichever is less. This warranty is non-transferable to subsequent owners of the home. Door hinges and all drawers glide system, including system hardware (lift system), however are warranted for only 1 year under normal residential use from the date of the original purchase.

**THIS LIMITED WARRANTY IS SUBJECT TO ALL LIMITATIONS, EXCLUSIONS, DISCLAIMERS, AND PROCEDURES SET FORTH HEREIN.**

- The warranty does not cover defects caused by improper handling, storage, dirt, chemicals, abrasive or citrus cleaning products, installation, assembly or disassembly, transit or other intentional or negligent damage, product modifications, exposure to the extreme moisture, humidity or excessive heat or cold (temperature outside the range of 50-85°F and humidity outside the range of 30-55% are considered extreme), nor does it cover defects arising from normal wear and tear, misuse, neglect, accidents, alterations, improper use, exposure to improper loads, or failure to maintain properly. Any modification to the hardware structure or finish of the original consumer purchaser's cabinetry by anyone other than those specifically authorized by J&K to do so shall void this limited liability warranty. The product must be used exclusively for its intended purpose in order to be covered by this limited liability warranty. This limited liability warranty shall become void if the cabinets or any components or parts thereof are in any way modified, improperly installed or damaged prior to or during installation, or installed or used in other than normal residential applications.
- Natural woods may vary in color, grain pattern, and characteristics and exhibit subtle changes as they age. Wood characteristics that naturally occur, such as variations in color, grain, mineral streaks and knots, are not considered defects. J&K will not be held responsible for these variations in your cabinetry. For example, painted doors, drawer fronts, and face frames may eventually have visible cracking around the joint area, and cabinet colors may darken or lighten over time. These conditions are considered a normal occurrence and are not included or covered by this limited liability warranty. A glazed finish by character is an uneven finish. Some edges and profiles will have heavier hang up than others and glazing may vary cabinet to cabinet, door to drawer and item to item. This may result in overall color variations but is not considered a defect. UV light, Sunlight, smoke, household cleaners, and other environmental conditions may also affect the color and integrity of the Product's finish or appearance over time. These variations are considered to be the nature of the material in relation to their environmental exposure and are not considered defects in material or workmanship and are not covered under this Limited Warranty.
- Mitered door joints in particular are likely to react to conditions of their environment. Gaps that may develop in door joints due to conditions of their environment are not included or covered by this limited liability warranty. This limited liability warranty does not cover or apply to hairline cracks of cabinetry; hairline cracks are unavoidable in wood cabinets given the nature of the material. Every species and grade of solid wood behaves in such a way as to eventually result in hairline cracks.
- Wood is wood and expansion and contraction still happen year after year as it compensates and adjusts to ever changing atmospheric humidity and temperature conditions. Observing shrink, expansion on center panels of doors is very common. It will return to its natural position within couple months once it has adjusted to seasonal changes. For the same reason, all door warpage greater than ¼" will be warranted. Please remove all doors and check them on a flat surface for the above stated warpage before requesting replacement.

● **Warranty Performance.** J&K periodically updates and makes changes to its product line and specifications. If a warranty claim is filed during the warranty period against obsolete or changed product and repair is not possible, J&K will, at its sole option, repair or replace the part under warranty with a new part of the same style or with a similar style currently offered and does not include or cover any other costs, including but not limited to any costs of service, labor, shipment, transportation, removal or installation related to the repair or replacement. J&K is not responsible for a replacement product that may not match the installed product exactly. If a manufacturing defect occurs within this limited liability warranty's terms and conditions and J&K determines to replace the defective cabinet or component or part thereof, J&K will ship the replacement cabinet or component or part thereof to the original consumer purchaser via ground shipper or freight carrier, at J&K's sole discretion.

**DISCLAIMER OF OTHER WARRANTIES:**

THIS WRITING IS THE COMPLETE AND EXCLUSIVE REMEDY FOR ANY ORIGINAL CONSUMER PURCHASER. FOR BREACH OF WARRANTY. THE STATEMENT OF THE EXPRESS WARRANTIES PROVIDED HEREIN IS IN LIEU OF ANY AND ALL OTHER EXPRESS AND/OR STATUTORY WARRANTIES, TO THE EXTENT PROVIDED BY LAW. IN NO EVENT SHALL J&K BE LIABLE FOR INCIDENTAL OR CONSEQUENTIAL DAMAGES TO ANY ORIGINAL CONSUMER PURCHASER OR A THIRD PARTY, INCLUDING BUT NOT LIMITED TO DAMAGES ARISING FROM PERSONAL INJURY, LOST PROFITS, LOSS OF BUSINESS OPPORTUNITIES, LOSS OF PROPERTY, ECONOMIC LOSS, STATUTORY OR EXEMPLARY DAMAGES, WHETHER FROM NEGLIGENCE, WARRANTY, STRICT LIABILITY OR OTHERWISE. ANY AND ALL IMPLIED WARRANTIES OF MERCHANTABILITY, FITNESS FOR A PARTICULAR PURPOSE, COURSE OF DEALING AND USAGE OF TRADE, AND ANY AND ALL OTHER WARRANTIES, EXPRESS OR IMPLIED, ARE EXCLUDED AND DISCLAIMED, EXCEPTING ONLY THOSE EXPRESS WARRANTIES SPECIFICALLY SET FORTH IN THIS LIMITED LIABILITY WARRANTY. IN NO EVENT SHALL J&K BE LIABLE FOR ANY INDIRECT DAMAGES RESULTING FROM INSTALLATION, USE OR FAILURE OF ITS PRODUCTS. THIS LIMITED LIABILITY WARRANTY IS J&K'S SOLE WARRANTY, AND NO DEALER, DISTRIBUTOR OR AGENT POSSESSES ANY AUTHORITY WHATSOEVER TO MODIFY OR ENLARGE THIS WARRANTY IN ANYWAY. SOME STATES DO NOT ALLOW LIMITATIONS ON HOW LONG AN IMPLIED WARRANTY LASTS, SO THE ABOVE LIMITATION MAY NOT APPLY TO YOU.

**CLAIMS:**

To file a warranty claim, first contact your locally authorized J&K builder, dealer or distributor who installed and sold the J&K product. They will obtain the information necessary to make a claim decision and forward such information in writing to J&K. A dated sales receipt as proof of purchase is also required to obtain benefits from these warranties. At its discretion, J&K may require an inspection of the allegedly defective product before repairing or replacing. If you have difficulty obtaining assistance, please write at the address noted at bottom of page, with an explanation of the defect. Please do not send the allegedly defective cabinet or component or part thereof to J&K, unless and until expressly requested to do so by our claims department. Pictures of cabinets or components or parts thereof may be requested by J&K. Making a fraudulent claim may be a crime, and violators may be prosecuted. J&K reserves the right to make all final decisions regarding warranty claims.

This limited liability warranty and its enforcement, and any and all claims or disputes arising out of, relating to or in connection with this limited liability warranty or the making, performance or interpretation of this limited liability warranty, shall be (1) governed by and construed exclusively in accordance with the laws of the State of New York, without regard to the conflicts of law or choice of law principles of the State of New York or any other jurisdiction (including but not limited to U.S. federal law) that would require the application of the law of any other jurisdiction, and (2) brought only in the United States District Court for the District of Southern District of New York or the New York Supreme Court, Nassau County.



## General Information:

- As a general rule, keep all cabinet surfaces dry at all times.
- Cabinet surfaces shall be dried immediately with a soft, lint-free cotton cloth.
- Avoid using a dish cloth or sponge. Avoid ammonia-based cleaners and soaps with dye. Harsh detergent residues may harm cabinet finishes.
- As with all wood products, quick temperature changes and excessive moisture can be harmful to the cabinet finish and overall cabinet stability.

## Basic Cleaning:

- To remove dust after installation and for initial cleaning, use a soft, lint-free cotton cloth to wipe down all exterior and interior surfaces.
- For regular basic cleaning, use a soft, lint-free cotton cloth dampened with a mild detergent or soap and warm water. For best results, use a blotting action rather than a wiping motion, when cleaning.
- Wipe up food spills and water spots immediately with a lint-free cotton cloth, so moisture is not absorbed into the cabinet surfaces.

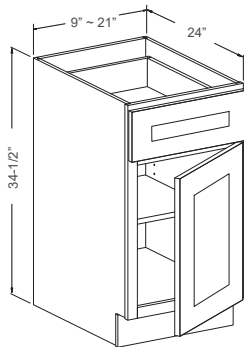
## Cleaning of Glass Door Inserts:

- Use a household glass cleaner with a soft, clean cloth.
- Apply the glass cleaner directly to the cleaning cloth rather than on the glass or mirror.
- Avoid excess glass cleaner running into the cabinet joints.
- Ammonia should never be used in full strength.

## Basic Care & Things to Avoid:

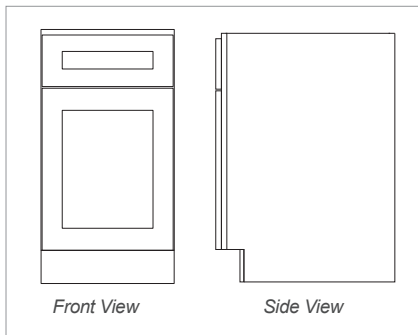
- When in doubt of a cleaner's suitability, DO NOT USE.
- Never use scouring pads, steel wool, wire brushes or powdered cleansers.
- Never leave a cloth moistened with cleaner on any cabinet surface for any length of time.
- Check the areas around the sink and dishwasher to make sure that water and detergents do not dry on the cabinet surfaces.
- Avoid draping wet or damp dish towels over doors of the base cabinets.
- Do not attach towel racks to the interior of cabinet doors.
- Avoid placing small kitchen appliances where the heat or steam is directed onto cabinet surfaces.
- Do not leave printed materials (newspapers, magazines, etc.) on the cabinet surfaces, as the printing can bleed into the cabinet finish.

Base Cabinet With 1 Drawer & 1 Door



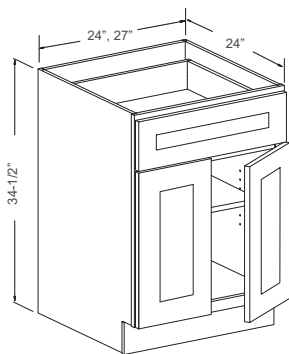
### Features

- 1 Drawer
- 1 Door
- 1 Adjustable Shelf



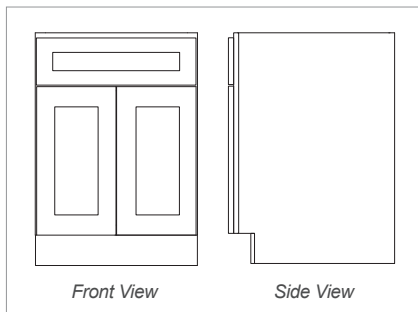
Item Code	Dimensions	Weight
B09	9W x 34-1/2H x 24D	42 LB
B12	12W x 34-1/2H x 24D	45 LB
B15	15W x 34-1/2H x 24D	50 LB
B18	18W x 34-1/2H x 24D	53 LB
B21	21W x 34-1/2H x 24D	57 LB

Base Cabinet With 1 Drawer & 2 Doors



### Features

- 1 Drawer
- 2 Doors
- 1 Adjustable Shelf

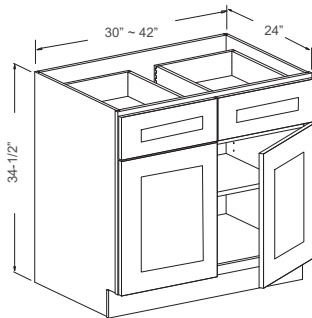


Item Code	Dimensions	Weight
B24	24W x 34-1/2H x 24D	63 LB
B27	27W x 34-1/2H x 24D	68 LB

BASE CABINETS

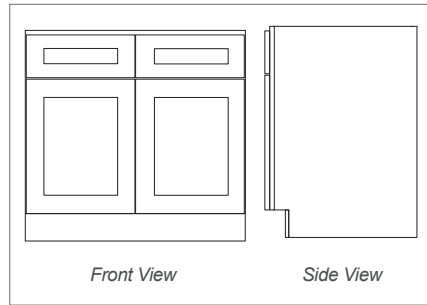
**\*PLEASE CALL FIRST\*** Availability for a particular product style and color may vary depending on showroom locations. Please check with your local J&K Cabinetry showroom or dealer for current availability before planning your projects.

## Base Cabinet With 2 Drawers & 2 Doors



### Features

- 2 Drawers
- 2 Doors
- 1 Adjustable Shelf

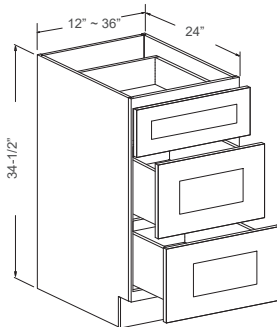


Front View

Side View

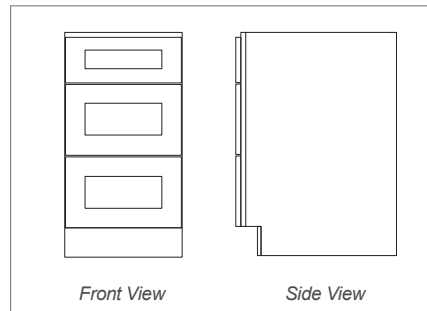
Item Code	Dimensions	Weight
B30	30W x 34-1/2H x 24D	81 LB
B33	33W x 34-1/2H x 24D	85 LB
B36	36W x 34-1/2H x 24D	89 LB
B42	42W x 34-1/2H x 24D	94 LB

## Drawer Base With 3 Drawers



### Features

- 1 Small Drawer
- 2 Large Drawers



Front View

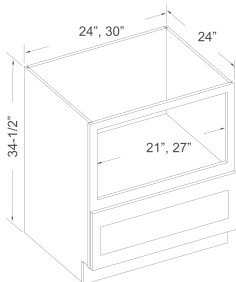
Side View

Item Code	Dimensions	Weight
DB12-3	12W x 34-1/2H x 24D	68 LB
DB15-3	15W x 34-1/2H x 24D	76 LB
DB18-3	18W x 34-1/2H x 24D	81 LB
DB21-3	21W x 34-1/2H x 24D	86 LB
DB24-3	24W x 34-1/2H x 24D	93 LB
DB30-3	30W x 34-1/2H x 24D	103 LB
DB33-3	33W x 34-1/2H x 24D	107 LB
DB36-3	36W x 34-1/2H x 24D	111 LB

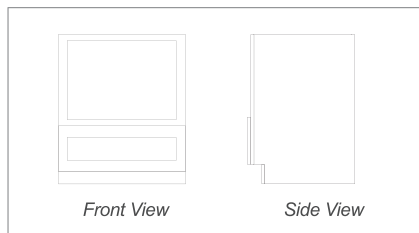
**\*PLEASE CALL FIRST\*** All specifications are subject to change without notice. All images are for reference only. To ensure the highest satisfaction, we strongly recommend you view an actual sample for product style and construction.



## Microwave Drawer Base

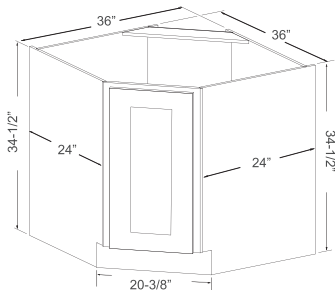


- Features**
- 1 Drawer

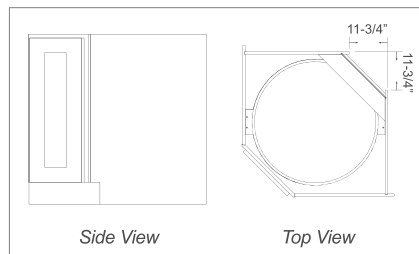


Item Code	Dimensions	Weight
* Mod Only	24W x 34-1/2H x 24D	*
* Mod Only	30W x 34-1/2H x 24D	*

## Base Diagonal Corner



- Features**
- 1 Full Door: 14-3/4"W x 29-1/4"H
  - 2 Wooden Round Susans



Item Code	Dimensions	Weight
CBD36	36W x 34-1/2H x 24D	81 LB

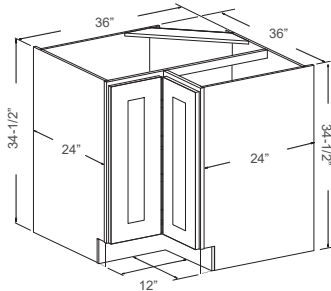
BASE CABINETS

**\*PLEASE CALL FIRST\*** Availability for a particular product style and color may vary depending on showroom locations. Please check with your local J&K Cabinetry showroom or dealer for current availability before planning your projects.

# BASE CABINETS

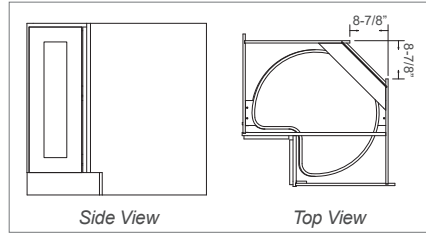


Lazy Susan



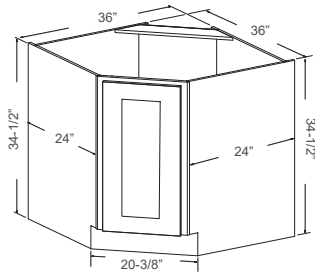
### Features

- 1 Bi-folding Door: 7-1/2"W, 10-1/2"W x 29-1/4"H
- 2 Wooden Kidney-Shaped Susans



Item Code	Dimensions	Weight
LS3612	36W x 34-1/2H x 24D	81 LB

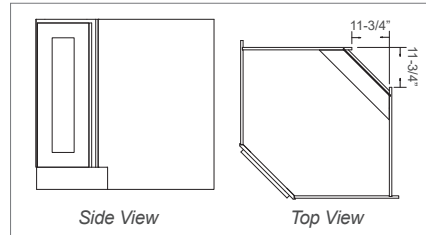
Base Diagonal Sink



### Features

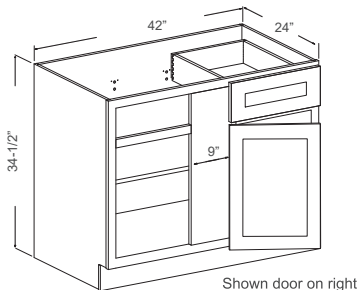
- 1 Full Door: 14-3/4"W x 29-1/4"H
- No Shelf

Notes: Back Panel NOT Open



Item Code	Dimensions	Weight
CSB36	36W x 34-1/2H x 24D	62 LB

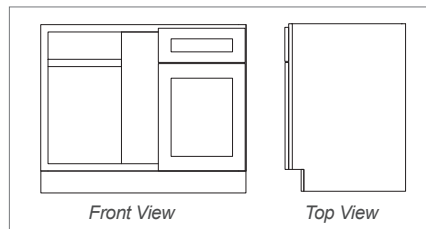
Base Blind Corner (L/R)



### Features

- 1 Drawer on Left or Right
- 1 Door on Left or Right
- 1 Adjustable Shelf

Notes: Minimum 3" Pull From The Wall When Install



Item Code	Dimensions	Weight
BBC42L/R	42W x 34-1/2H x 24D	78 LB

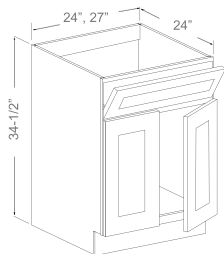
Notes: 18"W In BBC42L/R

**\*PLEASE CALL FIRST\*** All specifications are subject to change without notice. All images are for reference only. To ensure the highest satisfaction, we strongly recommend you view an actual sample for product style and construction.

# BASE CABINETS



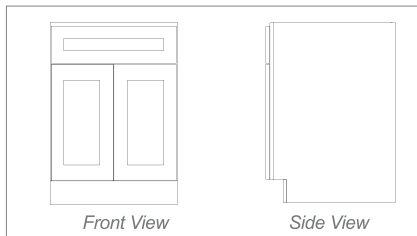
Sink Base With 2 Doors



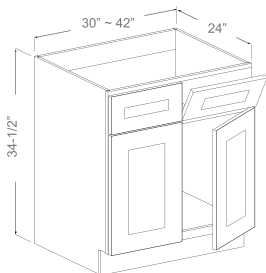
### Features

- 1 Tilt-Out Drawer With Tray
- 2 Doors
- No Shelf

Notes: Back Panel Open



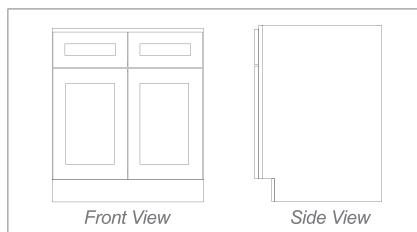
Item Code	Dimensions	Weight
SB24	24W x 34-1/2H x 24D	44 LB
SB27	27W x 34-1/2H x 24D	48 LB



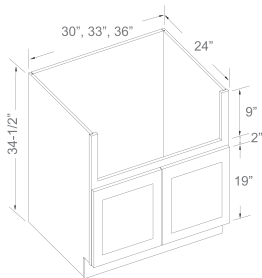
### Features

- 2 Tilt-Out Drawers With Trays
- 2 Doors
- No Shelf

Notes: Back Panel Open



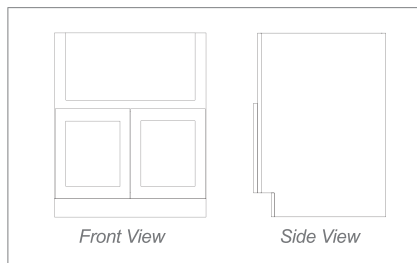
Item Code	Dimensions	Weight
SB30	30W x 34-1/2H x 24D	49 LB
SB33	33W x 34-1/2H x 24D	50 LB
SB36	36W x 34-1/2H x 24D	54 LB
SB42	42W x 34-1/2H x 24D	59 LB



### Features

- 2 Doors
- No Shelf

Notes: Back Panel NOT Open



Item Code	Dimensions	Weight
* Mod on Site	30W x 34-1/2H x 24D	*
* Mod on Site	33W x 34-1/2H x 24D	*
* Mod on Site	36W x 34-1/2H x 24D	*

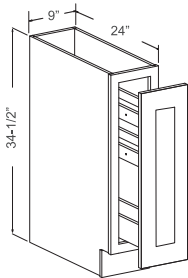
BASE CABINETS

**\*PLEASE CALL FIRST\*** Availability for a particular product style and color may vary depending on showroom locations. Please check with your local J&K Cabinetry showroom or dealer for current availability before planning your projects.

# BASE CABINETS



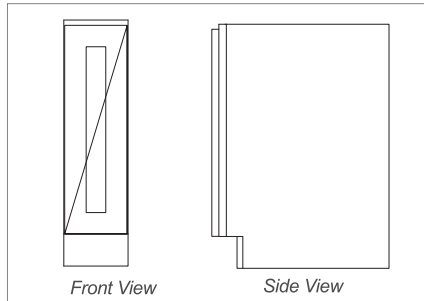
## Spice Pull-Out Base Cabinet



### Features

- 1 Door: 8-3/4"W x 29-1/4"H
- 3 Fixed Pull-Out Shelves

Notes: Standard Ball Bearing Side Glide

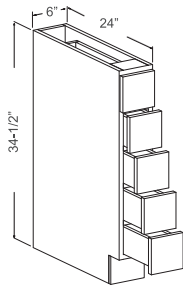


Front View

Side View

Item Code	Dimensions	Weight
SP09	9W x 34-1/2H x 24D	42 LB

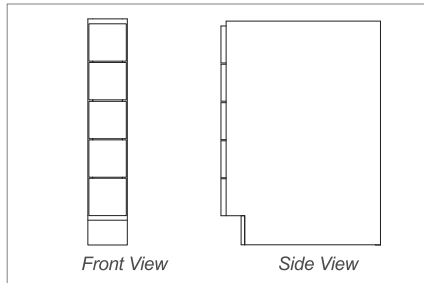
## Spice Drawer Base Cabinet



### Features

- 5 Square Drawers: 5-3/4"W x 5-1/2"H (Each)

Notes: No Glides

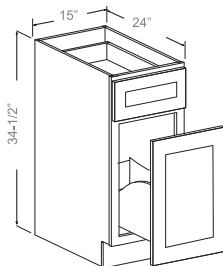


Front View

Side View

Item Code	Dimensions	Weight
BWRC6	6W x 34-1/2H x 24D	56 LB

## Waste Bin Base Cabinet

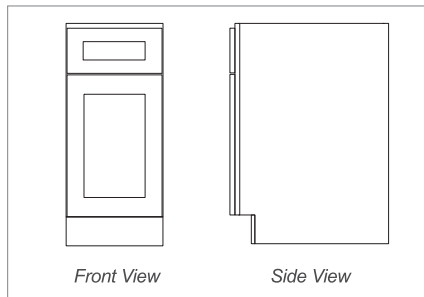


7 Gallon

### Features

- 1 Drawer
- 1 Door
- 1 Large Bin Cut-Out

Notes: Plastic Waste Bins NOT Included



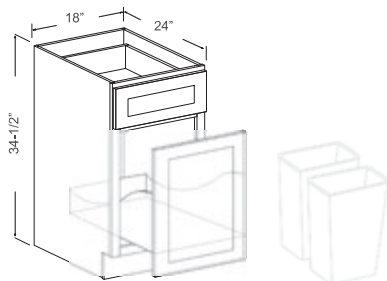
Front View

Side View

Item Code	Dimensions	Weight
BWBK15	15W x 34-1/2H x 24D	58 LB

**\*PLEASE CALL FIRST\*** All specifications are subject to change without notice. All images are for reference only. To ensure the highest satisfaction, we strongly recommend you view an actual sample for product style and construction.

## Waste Bin Base Cabinet

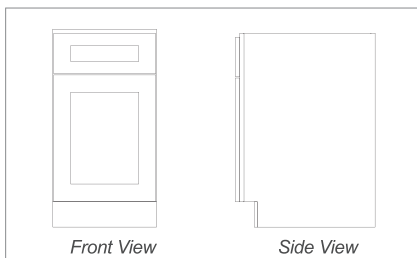


### Features

- 1 Drawer
- 1 Door
- 2 Large Bin Cut-Outs

Notes: Plastic Waste Bins NOT Included

7 Gallon Each

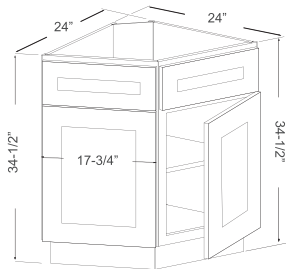


Front View

Side View

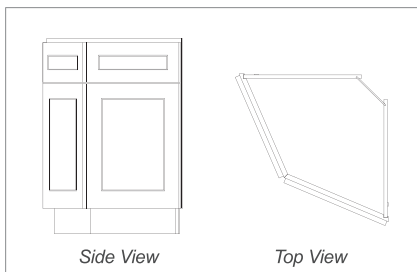
Item Code	Dimensions	Weight
BWBK18-2	18W x 34-1/2H x 24D	61 LB

## Base End Corner



### Features

- 2 Dummy Drawers
- 2 Doors
- 1 Adjustable Shelf

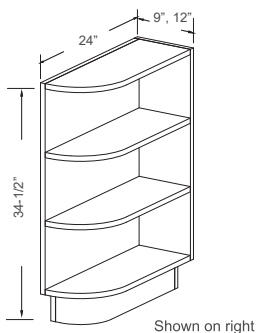


Side View

Top View

Item Code	Dimensions	Weight
BEC24	24W x 34-1/2H x 24D	48 LB

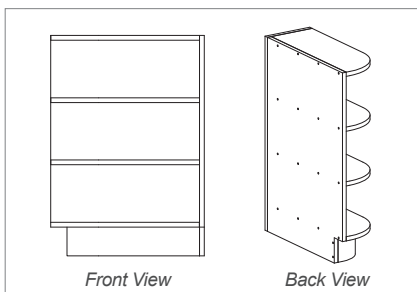
## Base End Shelf (L/R)



Shown on right

### Features

- 3 Fixed Shelves
- Matching Color Finish



Front View

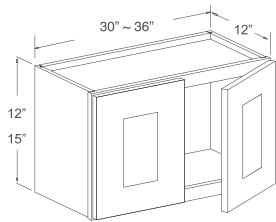
Back View

Item Code	Dimensions	Weight
BES09L/R	9W x 34-1/2H x 24D	34 LB

# WALL CABINETS

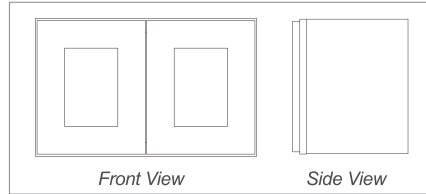


Wall Cabinet - 12"H & 15"H



## Features

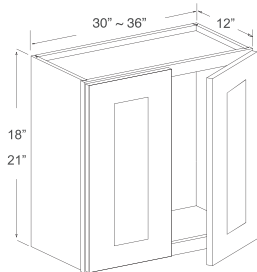
- 2 Doors
- No Shelf



Item Code	Dimensions	Weight
W3012	30W x 12H x 12D	20 LB
W3312	33W x 12H x 12D	22 LB
W3612	36W x 12H x 12D	23 LB

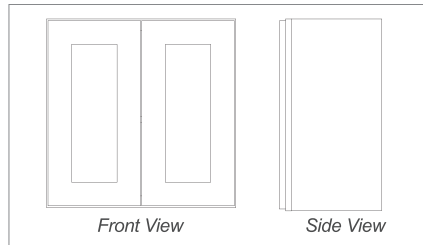
W3015	30W x 15H x 12D	22 LB
W3315	33W x 15H x 12D	25 LB
W3615	36W x 15H x 12D	27 LB

Wall Cabinet - 18"H & 21"H



## Features

- 2 Doors
- No Shelf



Item Code	Dimensions	Weight
W3018	30W x 18H x 12D	26 LB
W3318	33W x 18H x 12D	28 LB
W3618	36W x 18H x 12D	30 LB

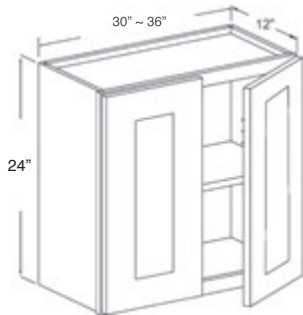
W3021	30W x 21H x 12D	29 LB
W3321	33W x 21H x 12D	31 LB
W3621	36W x 21H x 12D	36 LB

**\*PLEASE CALL FIRST\*** Availability for a particular product style and color may vary depending on showroom locations. Please check with your local J&K Cabinetry showroom or dealer for current availability before planning your projects.

# WALL CABINETS

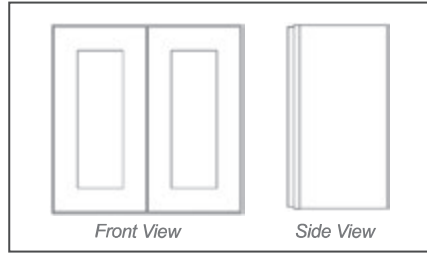


Wall Cabinet- 24"H



### Features

- 2 Doors
- 1 Adjustable Shelf



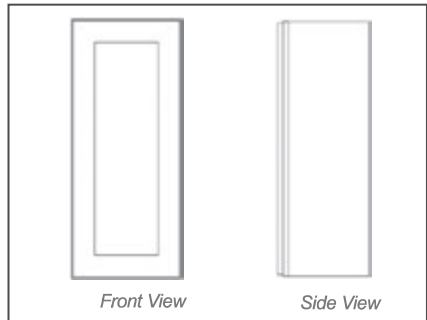
Item Code	Dimensions	Weight
W3024	30W x 24H x 12D	36 LB
W3324	33W x 24H x 12D	40 LB
W3624	36W x 24H x 12D	41 LB

Wall Cabinet- 30"H & 36"H



### Features

- 1 Door
- 2 Adjustable Shelves



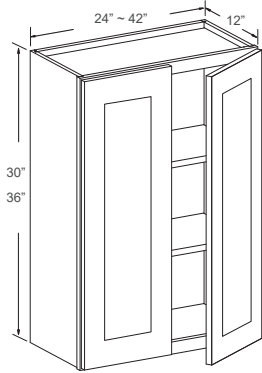
W0930	9W x 30H x 12D	20 LB
W1230	12W x 30H x 12D	23 LB
W1530	15W x 30H x 12D	27 LB
W1830	18W x 30H x 12D	30 LB
W2130	21W x 30H x 12D	32 LB

W0936	9W x 36H x 12D	23 LB
W1236	12W x 36H x 12D	27 LB
W1536	15W x 36H x 12D	29 LB
W1836	18W x 36H x 12D	34 LB
W2136	21W x 36H x 12D	38 LB

WALL CABINETS

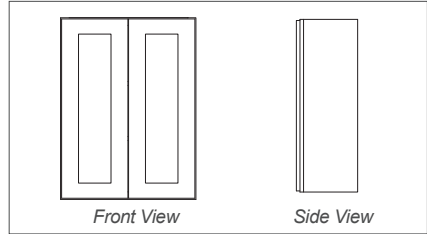
**\*PLEASE CALL FIRST\*** All specifications are subject to change without notice. All images are for reference only. To ensure the highest satisfaction, we strongly recommend you view an actual sample for product style and construction.

Wall Cabinet - 30"H & 36"H



### Features

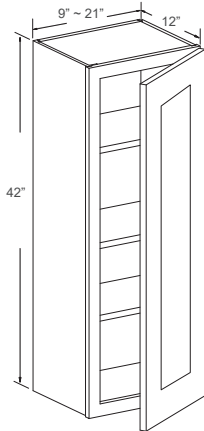
- 2 Doors
- 2 Adjustable Shelves



Item Code	Dimensions	Weight
W2430	24W x 30H x 12D	38 LB
W2730	27W x 30H x 12D	42 LB
W3030	30W x 30H x 12D	46 LB
W3330	33W x 30H x 12D	50 LB
W3630	36W x 30H x 12D	52 LB
W4230	42W x 30H x 12D	59 LB

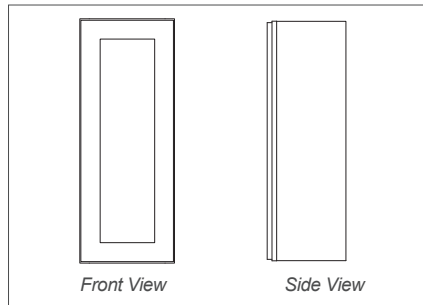
W2436	24W x 36H x 12D	43 LB
W2736	27W x 36H x 12D	45 LB
W3036	30W x 36H x 12D	51 LB
W3336	33W x 36H x 12D	55 LB
W3636	36W x 36H x 12D	59 LB
W4236	42W x 36H x 12D	66 LB

Wall Cabinet - 42"H



### Features

- 1 Door
- 3 Adjustable Shelves



Item Code	Dimensions	Weight
W0942	9W x 42H x 12D	27 LB
W1242	12W x 42H x 12D	31 LB
W1542	15W x 42H x 12D	34 LB
W1842	18W x 42H x 12D	40 LB
W2142	21W x 42H x 12D	43 LB

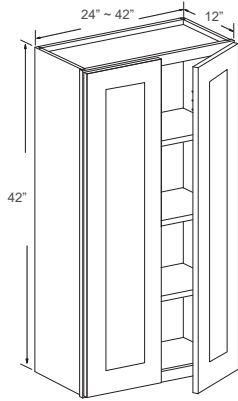
**\*PLEASE CALL FIRST\*** Availability for a particular product style and color may vary depending on showroom locations. Please check with your local J&K Cabinetry showroom or dealer for current availability before planning your projects.



# WALL CABINETS

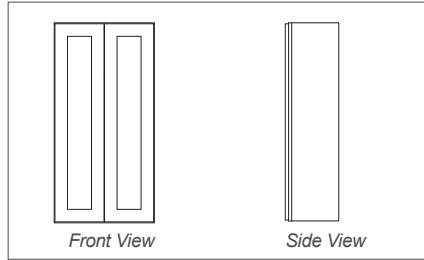


Wall Cabinet - 42"H



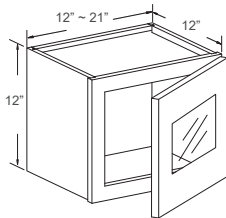
## Features

- 2 Doors
- 3 Adjustable Shelves



Item Code	Dimensions	Weight
W2442	24W x 42H x 12D	49 LB
W2742	27W x 42H x 12D	55 LB
W3042	30W x 42H x 12D	60 LB
W3342	33W x 42H x 12D	63 LB
W3642	36W x 42H x 12D	69 LB
W4242	42W x 42H x 12D	78 LB

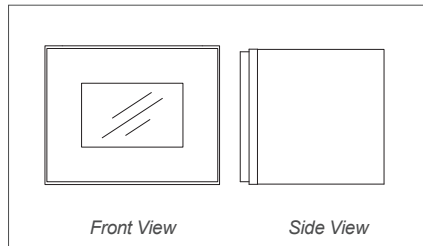
Wall Cabinet Glass Insert Door - 12"H



## Features

- 1 Door
- No Shelf
- Matching Color Interior

Notes: Glass Insert Not Included

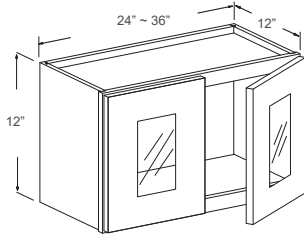


Item Code	Dimensions	Weight
WM1212H	12W x 12H x 12D	10 LB
WM1512H	15W x 12H x 12D	12 LB
WM1812H	18W x 12H x 12D	13 LB
WM2112H	21W x 12H x 12D	25 LB

WALL CABINETS

**\*PLEASE CALL FIRST\*** All specifications are subject to change without notice. All images are for reference only. To ensure the highest satisfaction, we strongly recommend you view an actual sample for product style and construction.

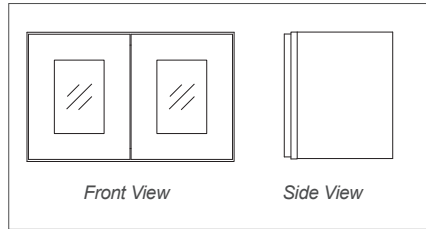
Wall Cabinet Glass Insert Door - 12"H



### Features

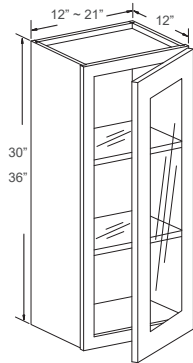
- 2 Doors
- No Shelf
- Matching Color Interior

Notes: Glass Inserts NOT Included



Item Code	Dimensions	Weight
WM2412H	24W x 12H x 12D	17 LB
WM2712H	27W x 12H x 12D	34 LB
WM3012H	30W x 12H x 12D	21 LB
WM3312H	33W x 12H x 12D	21 LB
WM3612H	36W x 12H x 12D	25 LB

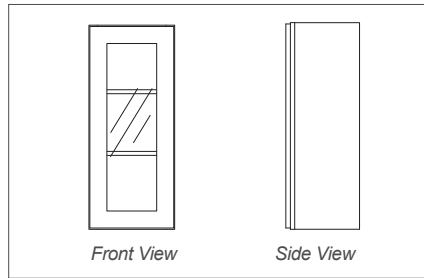
Wall Cabinet Glass Insert Door - 30"H & 36"H



### Features

- 1 Door
- 2 Adjustable Glass Shelves
- Matching Color Interior

Notes: Glass Shelves And Glass Insert NOT Included



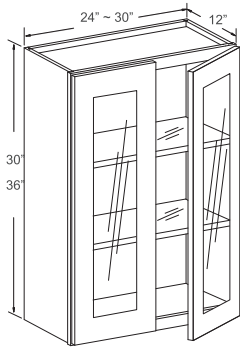
Item Code	Dimensions	Weight
WM1230H	12W x 30H x 12D	18 LB
WM1530H	15W x 30H x 12D	20 LB
WM1830H	18W x 30H x 12D	22 LB
WM2130H	21W x 30H x 12D	25 LB
WM1236H	12W x 36H x 12D	21 LB
WM1536H	15W x 36H x 12D	23 LB
WM1836H	18W x 36H x 12D	25 LB
WM2136H	21W x 36H x 12D	28 LB

**\*PLEASE CALL FIRST\*** Availability for a particular product style and color may vary depending on showroom locations. Please check with your local J&K Cabinetry showroom or dealer for current availability before planning your projects.

# WALL CABINETS



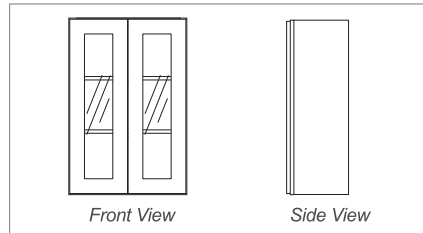
Wall Cabinet Glass Insert Door - 30"H & 36"H



## Features

- 2 Doors
- 2 Adjustable Glass Shelves
- Matching Color Interior

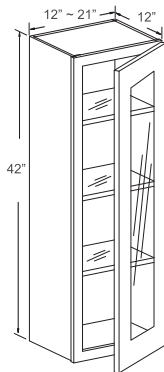
Notes: Glass Shelves And Glass Inserts NOT Included



Item Code	Dimensions	Weight
WM2430H	24W x 30H x 12D	28 LB
WM2730H	27W x 30H x 12D	29 LB
WM3030H	30W x 30H x 12D	30 LB

WM2436H	24W x 36H x 12D	33 LB
WM2736H	27W x 36H x 12D	34 LB
WM3036H	30W x 36H x 12D	36 LB

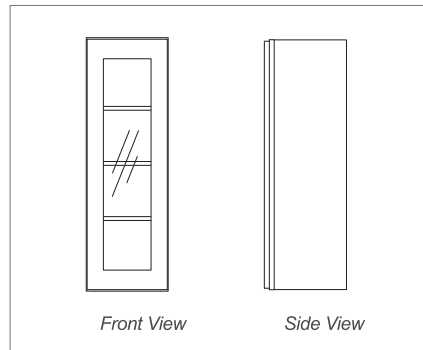
Wall Cabinet Glass Insert Door - 42"H



## Features

- 1 Door
- 3 Adjustable Glass Shelves
- Matching Color Interior

Notes: Glass Shelves And Glass Insert NOT Included



Item Code	Dimensions	Weight
WM1242H	12W x 42H x 12D	25 LB
WM1542H	15W x 42H x 12D	27 LB
WM1842H	18W x 42H x 12D	28 LB
WM2142H	21W x 42H x 12D	32 LB

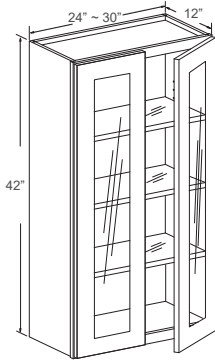
WALL CABINETS

**\*PLEASE CALL FIRST\*** All specifications are subject to change without notice. All images are for reference only. To ensure the highest satisfaction, we strongly recommend you view an actual sample for product style and construction.

# WALL CABINETS



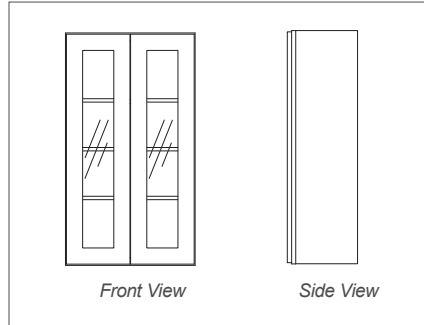
Wall Cabinet Glass Insert Door - 42"H



## Features

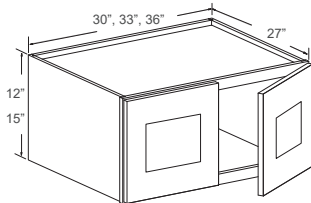
- 2 Doors
- 3 Adjustable Glass Shelves
- Matching Color Interior

Notes: Glass Shelves And Glass Inserts NOT Included



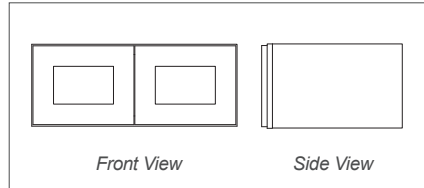
Item Code	Dimensions	Weight
WM2442H	24W x 42H x 12D	38 LB
WM2742H	27W x 42H x 12D	40 LB
WM3042H	30W x 42H x 12D	42 LB

Refrigerator Wall Cabinet - 12"H & 15"H



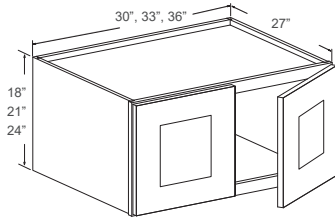
## Features

- 2 Doors
- No Shelf



Item Code	Dimensions	Weight
W301227	30W x 12H x 27D	35 LB
W331227	33W x 12H x 27D	38 LB
W361227	36W x 12H x 27D	40 LB
W301527	30W x 15H x 27D	38 LB
W331527	33W x 15H x 27D	40 LB
W361527	36W x 15H x 27D	45 LB

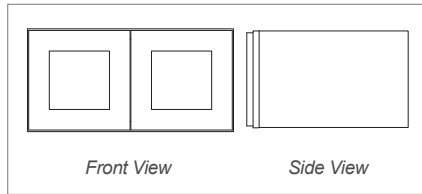
**\*PLEASE CALL FIRST\*** Availability for a particular product style and color may vary depending on showroom locations. Please check with your local J&K Cabinetry showroom or dealer for current availability before planning your projects.



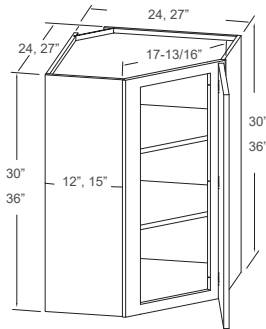
### Features

- 2 Doors
- No Shelf

Notes: 1 Adjustable Shelf In 24\"/>

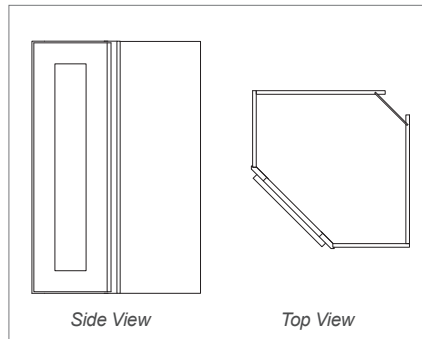


Item Code	Dimensions	Weight
W301827	30W x 18H x 27D	41 LB
W331827	33W x 18H x 27D	42 LB
W361827	36W x 18H x 27D	46 LB
W302127	30W x 21H x 27D	50 LB
W332127	33W x 21H x 27D	46 LB
W362127	36W x 21H x 27D	51 LB
W302427	30W x 24H x 27D	57 LB
W332427	33W x 24H x 27D	59 LB
W362427	36W x 24H x 27D	61 LB



### Features

- 1 Door
- 2 Adjustable Shelves



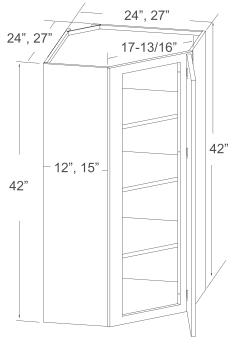
Item Code	Dimensions	Weight
WDC2430	24W x 30H x 12D	55 LB
WDC2436	24W x 36H x 12D	61 LB
WDC273615	27W x 36H x 15D	74 LB

**\*PLEASE CALL FIRST\*** All specifications are subject to change without notice. All images are for reference only. To ensure the highest satisfaction, we strongly recommend you view an actual sample for product style and construction.

# WALL CABINETS

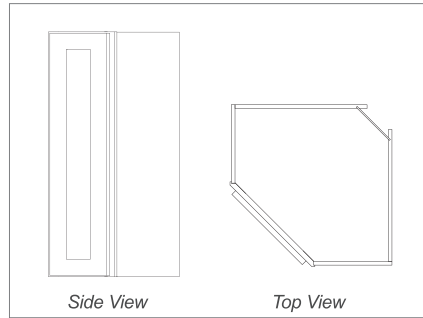


Wall Diagonal Corner - 42"H



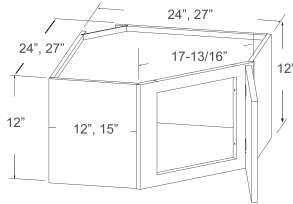
### Features

- 1 Door
- 3 Adjustable Shelves



Item Code	Dimensions	Weight
WDC2442	24W x 42H x 12D	72 LB
WDC274215	27W x 42H x 15D	87 LB

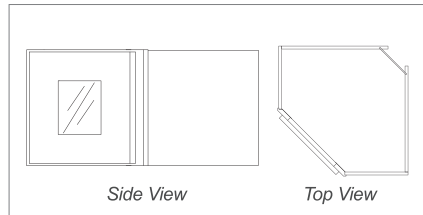
Wall Diagonal Corner Glass Insert Door - 12"H



### Features

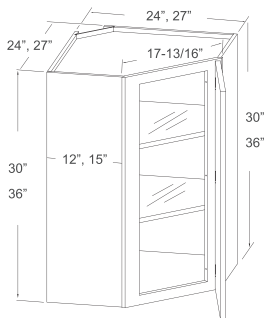
- 1 Door
- No Shelf
- Matching Color Interior

Notes: Glass Insert NOT Included



Item Code	Dimensions	Weight
* WMDC2412H	24W x 12H x 12D	25 LB
* WMDC271215H	27W x 12H x 15D	29 LB

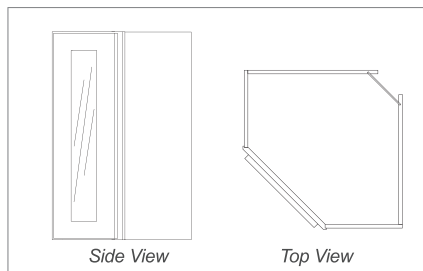
Wall Diagonal Corner Glass Insert Door - 30"H & 36"H



### Features

- 1 Door
- 2 Adjustable Glass Shelves
- Matching Color Interior

Notes: Glass Shelves And Glass Insert NOT Included



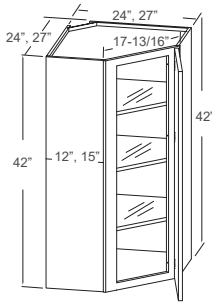
Item Code	Dimensions	Weight
WMDC2430H	24W x 30H x 12D	39 LB
WMDC2436H	24W x 36H x 12D	46 LB
WMDC273615H	27W x 36H x 15D	54 LB

**\*PLEASE CALL FIRST\*** Availability for a particular product style and color may vary depending on showroom locations. Please check with your local J&K Cabinetry showroom or dealer for current availability before planning your projects.

# WALL CABINETS



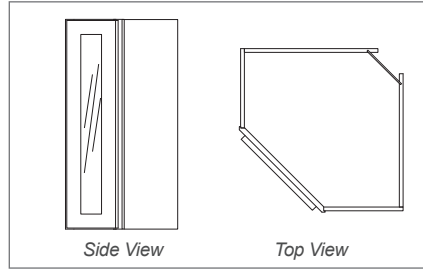
Wall Diagonal Corner  
Glass Insert Door - 42"H



### Features

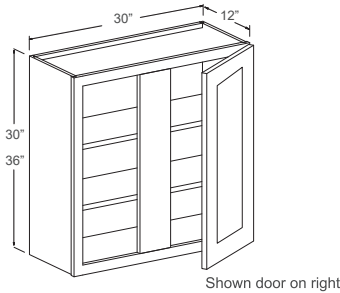
- 1 Door
- 3 Adjustable Glass Shelves
- Matching Color Interior

Notes: Glass Shelves And Glass Insert NOT Included



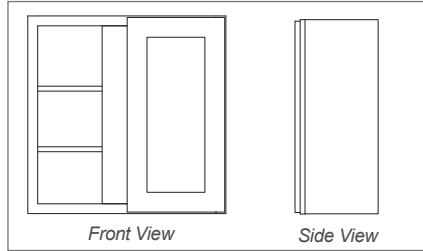
Item Code	Dimensions	Weight
WMDC2442H	24W x 42H x 12D	50 LB
WMDC274215H	27W x 42H x 15D	52 LB

Wall Blind Corner (L/R) - 30"H & 36"H



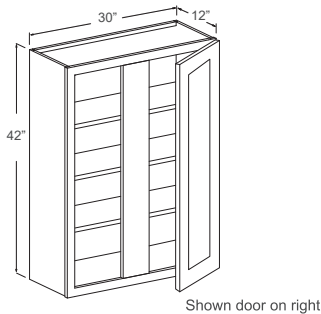
### Features

- 1 Door on Left or Right
- 2 Adjustable Shelves



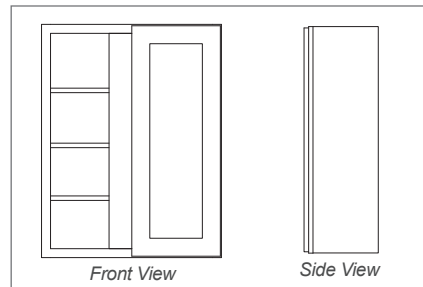
Item Code	Dimensions	Weight
WCC3030	30W x 30H x 12D	41 LB
WCC3036	30W x 36H x 12D	47 LB

Wall Blind Corner (L/R) - 42"H



### Features

- 1 Door on Left or Right
- 3 Adjustable Shelves

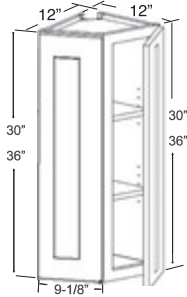


Item Code	Dimensions	Weight
WCC3042	30W x 42H x 12D	54 LB

WALL CABINETS

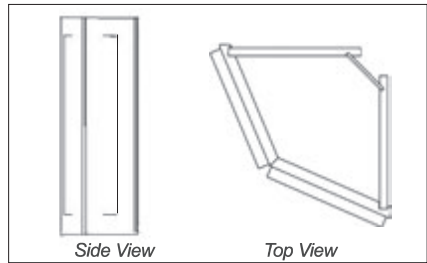
**\*PLEASE CALL FIRST\*** All specifications are subject to change without notice. All images are for reference only. To ensure the highest satisfaction, we strongly recommend you view an actual sample for product style and construction.

Wall End Corner - 30"H & 36"H



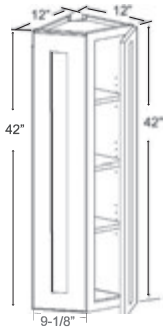
**Features**

- 2 Doors
- 2 Adjustable Shelves



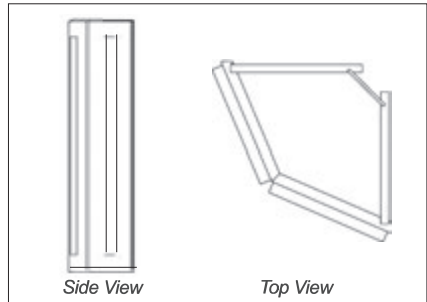
Item Code	Dimensions	Weight
WEC1230	12W x 30H x 12D	23 LB
WEC1236	12W x 36H x 12D	27 LB

Wall End Corner - 42"H



**Features**

- 2 Doors
- 3 Adjustable Shelves



Item Code	Dimensions	Weight
WEC1242	12W x 42H x 12D	30 LB

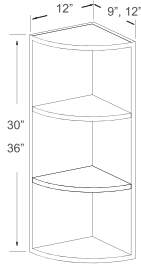
**\*PLEASE CALL FIRST\*** Availability for a particular product style and color may vary depending on showroom locations. Please check with your local J&K Cabinetry showroom or dealer for current availability before planning your projects.



# WALL CABINETS

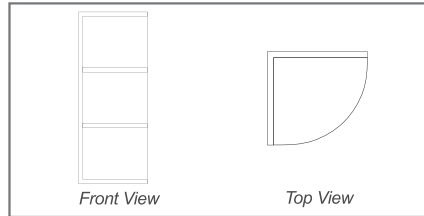


Wall End Shelf - 30"H & 36"H



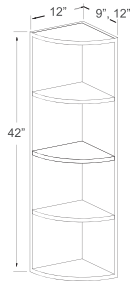
### Features

- 3 Fixed Shelves
- Matching Color Finish



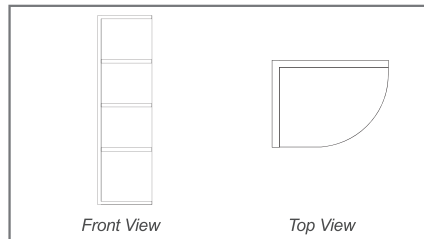
Item Code	Dimensions	Weight
WES0930L/R	9W x 30H x 12D	16 LB
WES0936L/R	9W x 36H x 12D	17 LB

Wall End Shelf - 42"H



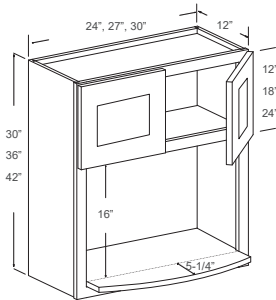
### Features

- 4 Fixed Shelves
- Matching Color Finish



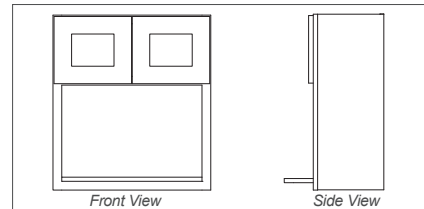
Item Code	Dimensions	Weight
WES0942L/R	9W x 42H x 12D	21 LB

Microwave - 30"/36"/42"H



### Features

- 2 Doors
- No Shelf
- 1 Open Shelf with 16"H (Shelf overhang 5-1/4")
- Matching Color Finish



Check Color \*

Item Code	Dimensions	Weight
WBL2430	24W x 30H x 12D	28 LB
WBL2730	27W x 30H x 12D	36 LB
WBL3030	30W x 30H x 12D	42 LB

Check Color \*

WBL2436	24W x 36H x 12D	33 LB
WBL2736	27W x 36H x 12D	42 LB
WBL3036	30W x 36H x 12D	46 LB

Check Color \*

WBL2442	24W x 42H x 12D	39 LB
WBL2742	27W x 42H x 12D	47 LB
WBL3042	30W x 42H x 12D	51 LB

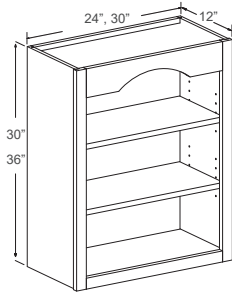
**\*PLEASE CALL FIRST\*** All specifications are subject to change without notice. All images are for reference only. To ensure the highest satisfaction, we strongly recommend you view an actual sample for product style and construction.

WALL CABINETS

# WALL CABINETS

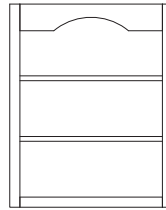


Wall Open Shelf - 30"H & 36"H

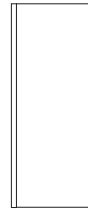


### Features

- 2 Adjustable Shelves
- Matching Color Finish



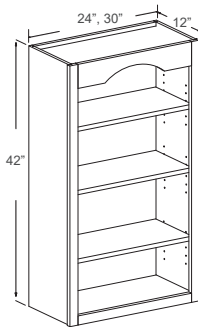
Front View



Side View

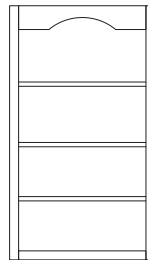
Item Code	Dimensions	Weight
WOS2430	24W x 30H x 12D	28 LB
WOS3030	30W x 30H x 12D	30 LB
WOS2436	24W x 36H x 12D	33 LB
WOS3036	30W x 36H x 12D	38 LB

Wall Open Shelf - 42"H

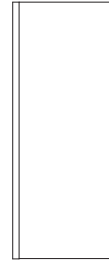


### Features

- 3 Adjustable Shelves
- Matching Color Finish



Front View



Side View

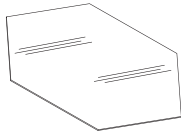
Item Code	Dimensions	Weight
WOS2442	24W x 42H x 12D	38 LB
WOS3042	30W x 42H x 12D	46 LB

**\*PLEASE CALL FIRST\*** Availability for a particular product style and color may vary depending on showroom locations. Please check with your local J&K Cabinetry showroom or dealer for current availability before planning your projects.

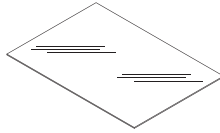
# GLASS SHELF & INSERT



Glass Shelf - Tempered



Shown GSDC##



Shown GS##

### Features

- Use On WM#####H Cab.

Notes: Caution When Shipping.

Item Code	Weight
GS12	3 LB
GS15	4 LB
GS18	5 LB
GS21	6 LB
GS24	7 LB
GS27	7 LB
GS30	8 LB
GS33	9 LB
GS36	10 LB
GSDC24	14 LB
GSDC27	19 LB

Glass Insert - Tempered - Grid Pattern



01  
Grid Pattern

Style	Grid Pattern	Beveled Edge	Frosted
Size Code	A01/K01/E01	A02/K02/E02	A03/K03/E03

### Features

- Use On WM#####H
- WM24##H, WM27##H, WM33##H Cab:  
Need Two Glass Inserts.

Notes: Caution When Shipping.

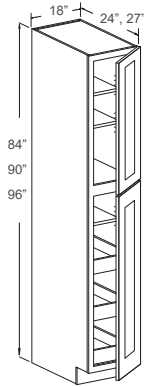
	Item Code	Weight
*	WM1212G-A01~03/ K01~03/ E01~03	1 LB
*	WM1230G-A01~03/ K01~03/ E01~03	3 LB
*	WM1236G-A01~03/ K01~03/ E01~03	4 LB
*	WM1242G-A01~03/ K01~03/ E01~03	4 LB
*	WM1512G-A01~03/ K01~03/ E01~03	1 LB
*	WM1530G-A01~03/ K01~03/ E01~03	4 LB
*	WM1536G-A01~03/ K01~03/ E01~03	5 LB
*	WM1542G-A01~03/ K01~03/ E01~03	6 LB
*	WM1812G-A01~03/ K01~03/ E01~03	2 LB
*	WM1830G-A01~03/ K01~03/ E01~03	6 LB
*	WM1836G-A01~03/ K01~03/ E01~03	7 LB
*	WM1842G-A01~03/ K01~03/ E01~03	8 LB
*	WM2112G-A01~03/ K01~03/ E01~03	2 LB
*	WM2130G-A01~03/ K01~03/ E01~03	7 LB
*	WM2136G-A01~03/ K01~03/ E01~03	9 LB
*	WM2142G-A01~03/ K01~03/ E01~03	10 LB
*	WM2430G-A01~03/ K01~03/ E01~03	3 LB
*	WM2436G-A01~03/ K01~03/ E01~03	4 LB
*	WM2442G-A01~03/ K01~03/ E01~03	4 LB
*	WM2730G-A01~03/ K01~03/ E01~03	4 LB
*	WM2736G-A01~03/ K01~03/ E01~03	5 LB
*	WM2742G-A01~03/ K01~03/ E01~03	5 LB
*	WM3330G-A01~03/ K01~03/ E01~03	5 LB
*	WM3336G-A01~03/ K01~03/ E01~03	6 LB
*	WM3342G-A01~03/ K01~03/ E01~03	7 LB

**\*PLEASE CALL FIRST:** Availability for a particular product style and color may vary depending on showroom locations. Please check with your local J&K Cabinetry showroom or dealer for current availability before planning your projects.

# PANTRY & OVEN CABINETS



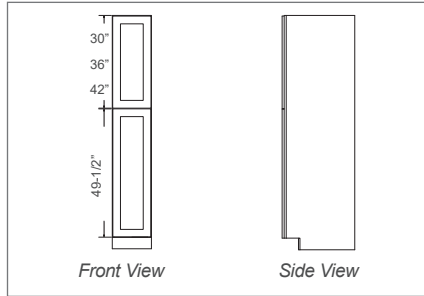
Pantry Cabinet - 84"/90"/96"H



## Features

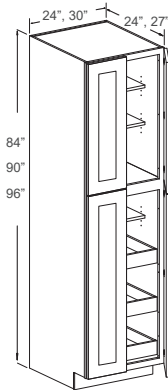
- 2 Doors
- 2 Adjustable Top Shelves
- 1 Adjustable Middle Shelf
- 3 Bottom Roll-Out Trays

Notes: 3 Adjustable Top Shelves In 96"H Cabinet.



	Item Code	Dimensions	Weight
Mod. *	WP1884	18W x 84H x 24D	142 LB
	WP188427	18W x 84H x 27D	154 LB
Mod. *	WP1890	18W x 90H x 24D	149 LB
	WP189027	18W x 90H x 27D	160 LB
Mod. *	WP1896	18W x 96H x 24D	155 LB
	WP189627	18W x 96H x 27D	165 LB

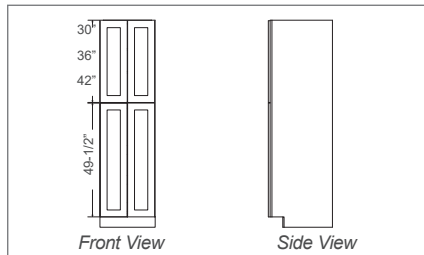
Pantry Cabinet - 84"/90"/96"H



## Features

- 4 Doors
- 2 Adjustable Top Shelves
- 1 Adjustable Middle Shelf
- 3 Bottom Roll-Out Trays

Notes: 3 Adjustable Top Shelves In 96"H Cabinet.



	Item Code	Dimensions	Weight
Mod. *	WP2484	24W x 84H x 24D	157 LB
	WP248427	24W x 84H x 27D	176 LB
	WP308427	30W x 84H x 27D	196 LB
Mod. *	WP2490	24W x 90H x 24D	168 LB
Mod. *	WP3090	30W x 90H x 24D	188 LB
	WP249027	24W x 90H x 27D	184 LB
	WP309027	30W x 90H x 27D	211 LB
Mod. *	WP2496	24W x 96H x 24D	180 LB
Mod. *	WP3096	30W x 96H x 24D	203 LB
	WP249627	24W x 96H x 27D	190 LB
	WP309627	30W x 96H x 27D	190 LB

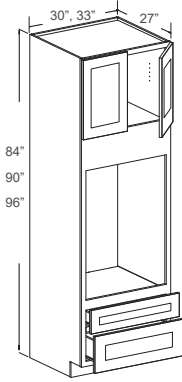
**\*PLEASE CALL FIRST\*** Availability for a particular product style and color may vary depending on showroom locations. Please check with your local J&K Cabinetry showroom or dealer for current availability before planning your projects.

# PANTRY & OVEN CABINETS



PANTRY & OVEN CABINETS

Tall Oven Cabinet - 84" / 90" / 96"H



### Features

- 2 Doors
- No Shelf
- 1 Large Open Shelf 38-7/16"H
- 1 Small Bottom Drawer
- 1 Large Bottom Drawer

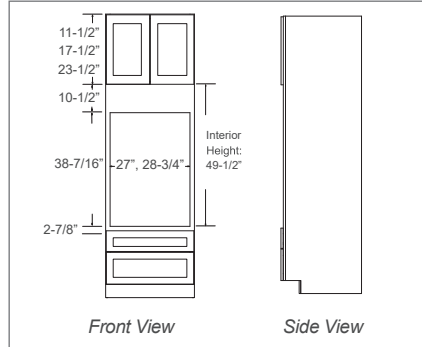
Stile:  
1-1/2"W on 30" Cab  
2-1/8"W on 33" Cab

Notes:  
1 Adjustable  
Top Shelf  
In 96"H Cabinet

Notes: Trim or Add to Fit Oven.

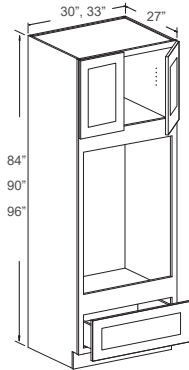
Opening Shelf Dimension	
30" Cab	27"W X 38-7/16"H
33" Cab	28-3/4"W X 38-7/16"H

Door Style	Drawer Upper	Drawer Lower
K10, K3, K8, A7, M01	6"H	11-3/8"H
CO66, J5, S8, S5, S2, S1, H9, H8, H3	7"H	10-7/8"H



Item Code	Dimensions	Weight
OC308427	30W x 84H x 27D	160 LB
OC338427	33W x 84H x 27D	170 LB
OC309027	30W x 90H x 27D	170 LB
OC339027	33W x 90H x 27D	182 LB
OC309627	30W x 96H x 27D	182 LB
OC339627	33W x 96H x 27D	192 LB

Tall Oven Cabinet - 84" / 90" / 96"H



### Features

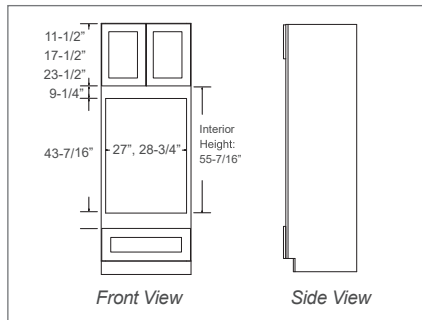
- 2 Doors
- No Shelf
- 1 Large Open Shelf 43-7/16"H
- 1 Large Bottom Drawer

Notes:  
1 Adjustable  
Top Shelf  
In 96"H Cabinet

Notes: Trim or Add to Fit Oven.

Opening Shelf Dimension	
30" Cab	27"W X 43-7/16"H
33" Cab	28-3/4"W X 43-7/16"H

Door Style	Drawer
K10, K3, K8, A7, M01	6"H
CO66, J5, S8, S5, S2, S1, H9, H8, H3	7"H



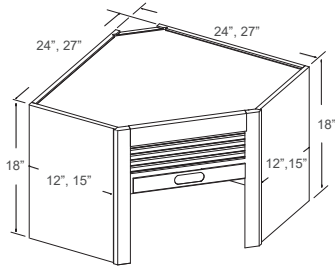
Item Code	Dimensions	Weight
OC308427WO	30W x 84H x 27D	132 LB
OC338427WO	33W x 84H x 27D	142 LB
OC309027WO	30W x 90H x 27D	145 LB
OC339027WO	33W x 90H x 27D	155 LB
OC309627WO	30W x 96H x 27D	158 LB
OC339627WO	33W x 96H x 27D	169 LB

**\*PLEASE CALL FIRST\*** All specifications are subject to change without notice. All images are for reference only. To ensure the highest satisfaction, we strongly recommend you view an actual sample for product style and construction.

# STORAGE & ORGANIZATION



## Appliance Garage

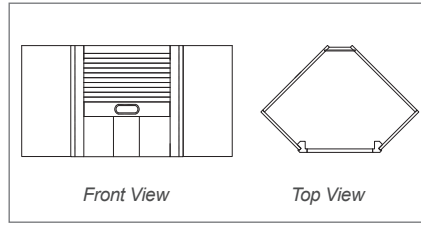


### Features

- 1 Roll-Up Door
- No Shelf

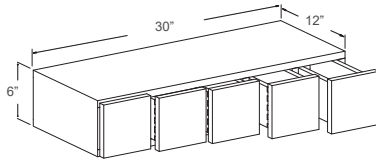
Check Color

*Notes: Use It With Wall Diagonal Cab. Install It After Countertop Is Installed.*



Item Code	Dimensions	Weight
AG2418	24W x 18H x 12D	28 LB
AG2718	27W x 18H x 15D	31 LB

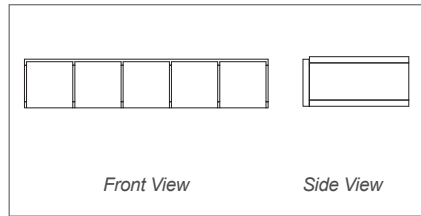
## Wall Spice Drawer Cabinet



### Features

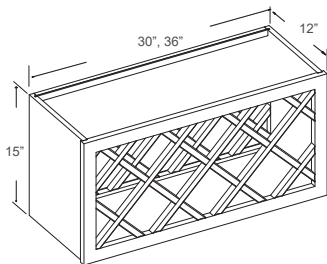
- 5 Square Drawers: 5-3/4"W x 5-1/2"H (Each)

*Notes: No Glides.*



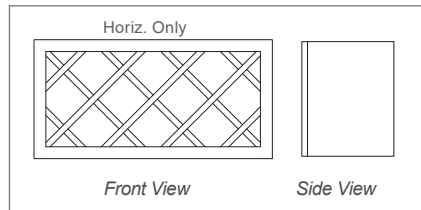
Item Code	Dimensions	Weight
WWRC6	30W x 6H x 12D	33 LB

## Wine Rack



### Features

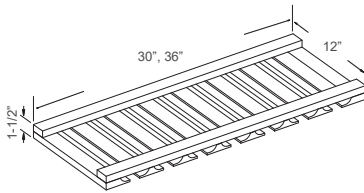
- 10 Compartments in 30"W
- 14 Compartments in 36"W
- Matching Color Finish



Item Code	Dimensions	Weight
30WR	30W x 15H x 12D	22 LB
36WR	36W x 15H x 12D	25 LB

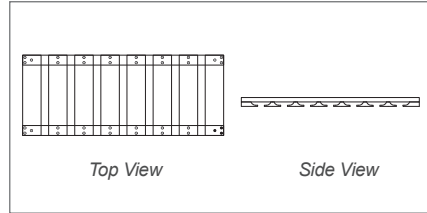
**\*PLEASE CALL FIRST\*** Availability for a particular product style and color may vary depending on showroom locations. Please check with your local J&K Cabinetry showroom or dealer for current availability before planning your projects.

Glass Rack



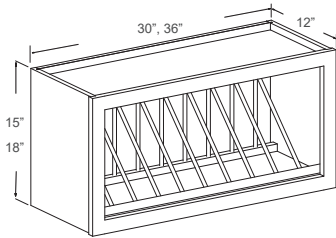
**Features**

- 7 Rail Openings in 30"W
- 9 Rail Openings in 36"W
- Matching Color Finish



Item Code	Dimensions	Weight
30GR	30W x 1-1/2H x 12D	4 LB
36GR	36W x 1-1/2H x 12D	4 LB

Plate Rack

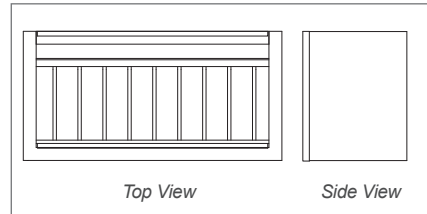


**Features**

Check Color

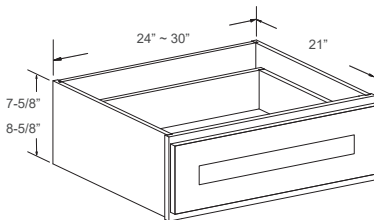
- 10 Plate Slots in 30"W
- 12 Plate Slots in 36"W
- 12"H Opening in 15"H
- 15"H Opening in 18"H
- Matching Color Finish

NOT Available For E1, E2 : WCD3015, WCD3615



Item Code	Dimensions	Weight
* WCD3015	30W x 15H x 12D	19 LB
* WCD3615	36W x 15H x 12D	20 LB
* WCD3018	30W x 18H x 12D	22 LB
* WCD3618	36W x 18H x 12D	24 LB

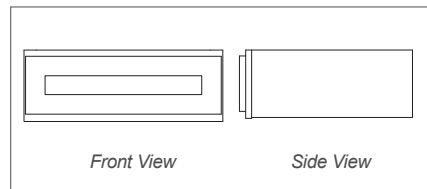
Knee Drawer



**Features**

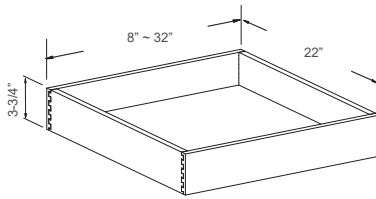
- 1 Drawer

Door style	Drawer Height
K10, K3, K8, A7, M01	6"
CO66, J5, S8, S5, S2, S1 H9, H8, H3, E1, E2	7"



Item Code	Dimensions	Weight
FD24	24W x 21D	26 LB
FD27	27W x 21D	29 LB
FD30	30W x 21D	32 LB

**\*PLEASE CALL FIRST\*** All specifications are subject to change without notice. All images are for reference only. To ensure the highest satisfaction, we strongly recommend you view an actual sample for product style and construction.



### Features

- Clear Coat Finish
- 1 Pair Of Ball Bearing Soft-Close Side Glides

Item Code	Dimensions	Weight
RD12	8W x 3-3/4H x 22D	8 LB
RD15	11W x 3-3/4H x 22D	9 LB
RD18	14W x 3-3/4H x 22D	10 LB
RD21	17W x 3-3/4H x 22D	10 LB
RD24	20W x 3-3/4H x 22D	11 LB
RD27	23W x 3-3/4H x 22D	11 LB
RD30	26W x 3-3/4H x 22D	13 LB
RD33	29W x 3-3/4H x 22D	13 LB
RD36	32W x 3-3/4H x 22D	14 LB

Roll-Out Tray

**\*PLEASE CALL FIRST\*** Availability for a particular product style and color may vary depending on showroom locations. Please check with your local J&K Cabinetry showroom or dealer for current availability before planning your projects.

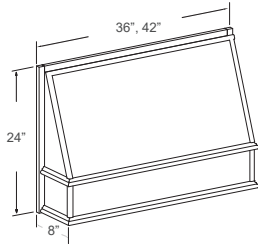


# HOODS & SPECIALTY CABINETS



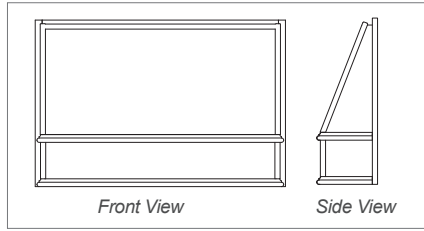
HOODS & SPECIALTY CABINETS

## Range Wood Hood



### Features

- RHE3624 - Inside Dimensions: 32.5W x 7.5H x 7.5D
  - RHE4224 - Inside Dimensions: 38.5W x 7.5H x 7.5D
- NOT Available For E1, E2 : RHE3624, RHE4224

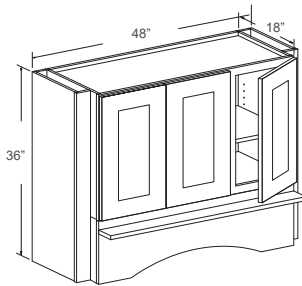


Front View

Side View

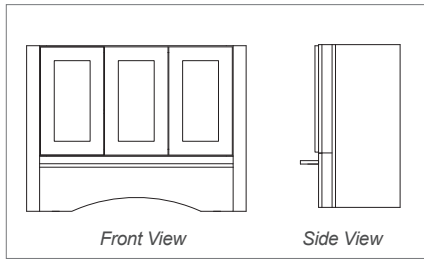
Item Code	Dimensions	Weight
RHE3624	36W x 24H x 8D	20 LB
RHE4224	42W x 24H x 8D	22 LB

## Hearth Style Hood Combo



### Features

- Includes Items & Quantities:
- W422418 (1)
  - WF442 (1)
  - DER36F (2)
  - RPV42-12 (1) (see Pg.80)
  - LC9 (2)

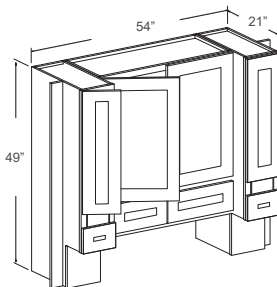


Front View

Side View

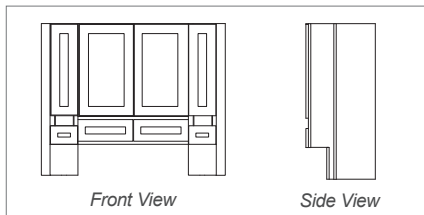
Item Code	Dimensions	Weight
* RHS483618	48W x 36H x 18D	104 LB

## Hearth Style Hood Combo



### Features

- Includes Items & Quantities:
- RHS094921 (2) (see Pg.49)
  - W363015 (1)
  - WF349 (2)
  - WF936 (1)
  - D18 (2) (see Pg.60)
  - LC9 (2)



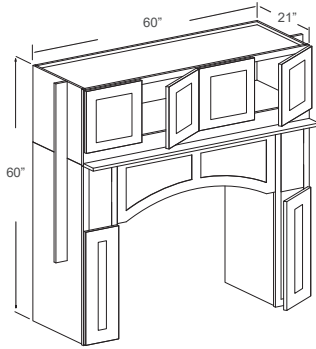
Front View

Side View

Item Code	Dimensions	Weight
* RHS5449	54W x 49H x 21D	*

**\*PLEASE CALL FIRST\*** Availability for a particular product style and color may vary depending on showroom locations. Please check with your local J&K Cabinetry showroom or dealer for current availability before planning your projects.

Hearth Style Hood Combo

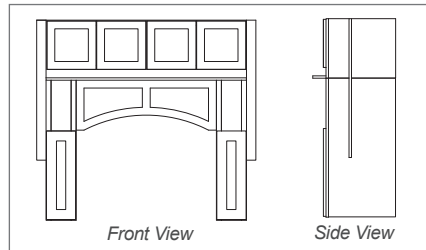


NOT Available For E1, E2 : RHS6060

### Features

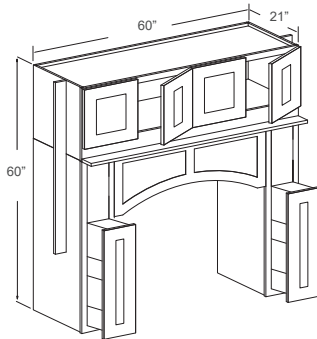
Includes Items & Quantities:

- RHS094221 (2) (see Pg.49)
- W601821 (1)
- WF342 (2) (see Pg.69)
- WF460 (1)
- RPV42-A (1) (see Pg.80)
- LC12 (2)
- BP6020-1/4 (2)



Item Code	Dimensions	Weight
* RHS6060	60W x 60H x 21D	*

Hearth Style Hood Combo

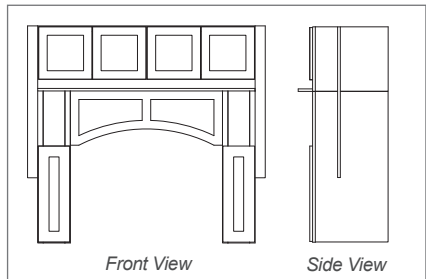


NOT Available For E1, E2 : RHS6060P

### Features

Includes Items & Quantities:

- RHS094221P (2) (see Pg.49)
- W601821 (1)
- WF342 (2) (see Pg.70)
- WF460 (1)
- RPV42-A (1) (see Pg.80)
- LC12 (2)
- BP6020 1/4 (2)



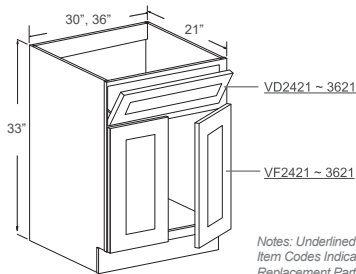
Item Code	Dimensions	Weight
* RHS6060P	60W x 60H x 21D	*

**\*PLEASE CALL FIRST\*** All specifications are subject to change without notice. All images are for reference only. To ensure the highest satisfaction, we strongly recommend you view an actual sample for product style and construction.

# BATHROOM VANITIES



Vanity Sink Cabinet

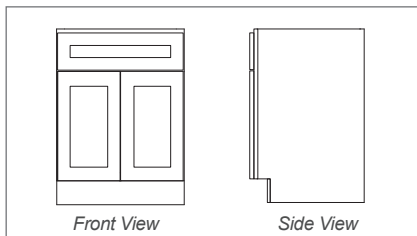


Notes: Underlined Item Codes Indicate Replacement Parts.

### Features

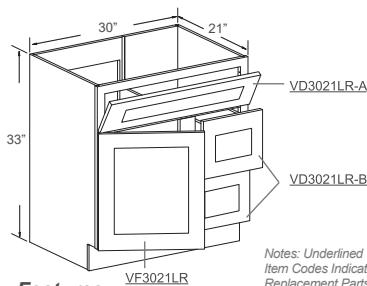
- 1 Tilt-Out Drawer With Tray
- 2 Doors
- No Shelf

Notes: Back Panel Open



Item Code	Dimensions	Weight
FA3021	30W x 33H x 21D	45 LB
FA3621	36W x 33H x 21D	51 LB

Vanity Sink Cabinet

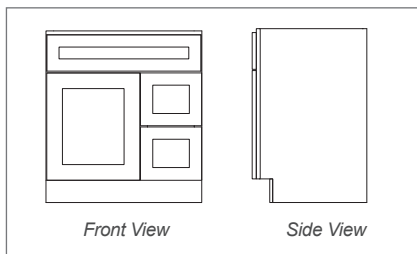


Notes: Underlined Item Codes Indicate Replacement Parts.

### Features

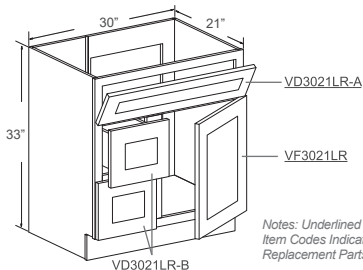
- 1 Tilt-Out Drawer With Tray
- 1 Door on Left
- 2 Drawers on Right
- No Shelf

Notes: Back Panel Open On Left



Item Code	Dimensions	Weight
FA3021DL	30W x 33H x 21D	75 LB

Vanity Sink Cabinet

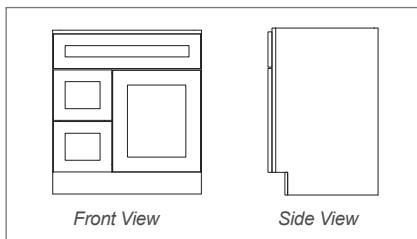


Notes: Underlined Item Codes Indicate Replacement Parts.

### Features

- 1 Tilt-Out Drawer With Tray
- 2 Drawers on Left
- 1 Door on Right
- No Shelf

Notes: Back Panel Open On Right



Item Code	Dimensions	Weight
FA3021DR	30W x 33H x 21D	75 LB

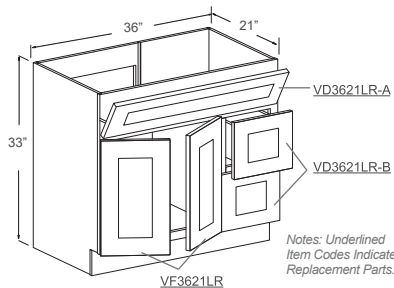
BATHROOM VANITIES

**\*PLEASE CALL FIRST\*** Availability for a particular product style and color may vary depending on showroom locations. Please check with your local J&K Cabinetry showroom or dealer for current availability before planning your projects.

# BATHROOM VANITIES



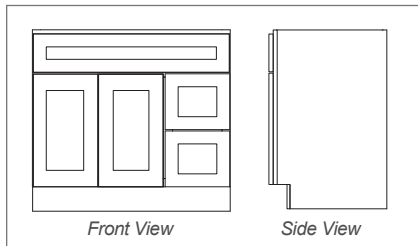
Vanity Sink Cabinet



### Features

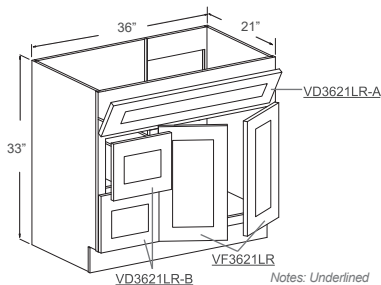
- 1 Tilt-Out Drawer With Tray
- 2 Drawers on Right
- 2 Doors on Left
- No Shelf

Notes: Back Panel Open On Left



Item Code	Dimensions	Weight
FA3621DL	36W x 33H x 21D	80 LB

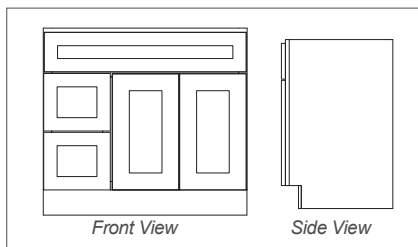
Vanity Sink Cabinet



### Features

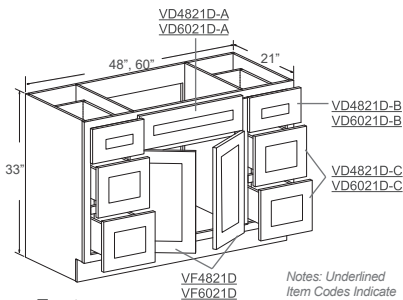
- 1 Tilt-Out Drawer With Tray
- 2 Drawers on Left
- 2 Doors on Right
- No Shelf

Notes: Back Panel Open On Right



Item Code	Dimensions	Weight
FA3621DR	36W x 33H x 21D	80 LB

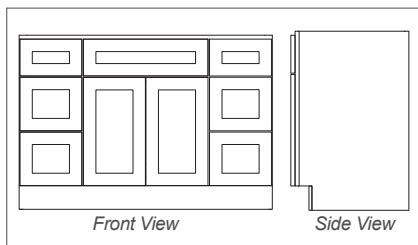
Vanity Single-Sink Combo



### Features

- 1 Tilt-Out Drawer With Tray
- 6 Drawers
- 2 Doors
- No Shelf

Notes: Back Panel Open In The Middle



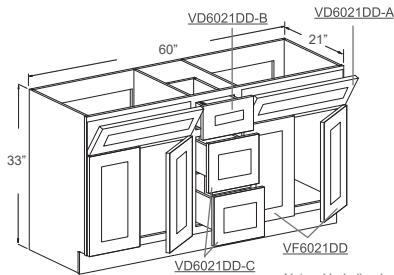
Item Code	Dimensions	Weight
FA4821D	48W x 33H x 21D	140 LB
FA6021D	60W x 33H x 21D	154 LB

**PLEASE CALL FIRST:** All specifications are subject to change without notice. All images are for reference only. To ensure the highest satisfaction, we strongly recommend you view an actual sample for product style and construction.

# BATHROOM VANITIES



Vanity Double-Sink Combo

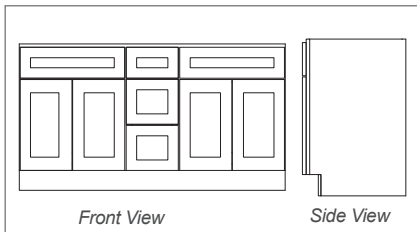


### Features

- 2 Tilt-Out Drawers With Trays
- 3 Drawers
- 4 Doors
- No Shelf

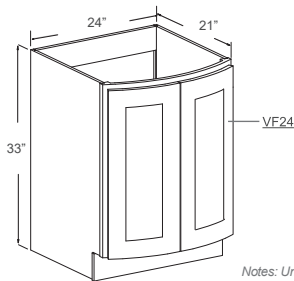
Notes: Back Panel Open On Left And Right

Notes: Underlined Item Codes Indicate Replacement Parts.



Item Code	Dimensions	Weight
FA6021DD	60W x 33H x 21D	117 LB

Vanity Sink Cabinet Curved Door



### Features

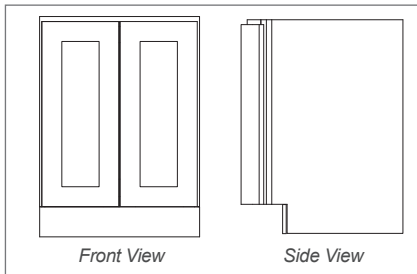
- 2 Curved Doors
- No Shelf

Notes: Back Panel Open

Not Available For E1, E2, S1, S2, S5, S8 : FSVA24

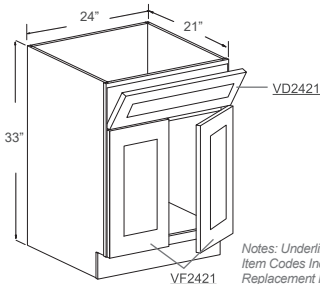
Notes: Underlined Item Codes Indicate Replacement Parts.

Check Color



Item Code	Dimensions	Weight
<u>FSVA24</u>	24W x 33H x 21D	35 LB

Vanity Sink Cabinet

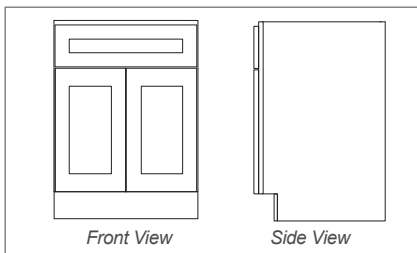


### Features

- 1 Tilt-Out Drawer With Tray
- 2 Doors
- No Shelf

Notes: Back Panel NOT Open

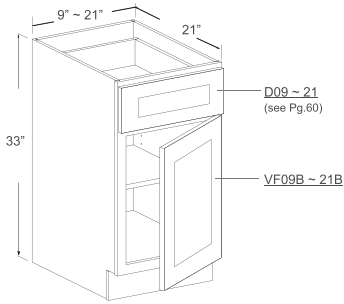
Notes: Underlined Item Codes Indicate Replacement Parts.



Item Code	Dimensions	Weight
SVA2421	24W x 33H x 21D	42 LB

BATHROOM VANITIES

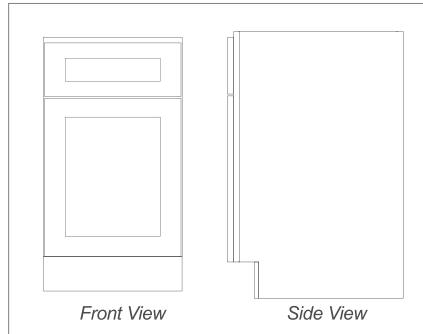
**\*PLEASE CALL FIRST\*** Availability for a particular product style and color may vary depending on showroom locations. Please check with your local J&K Cabinetry showroom or dealer for current availability before planning your projects.



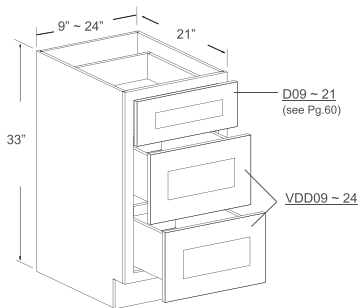
Notes: Underlined Item Codes Indicate Replacement Parts.

### Features

- 1 Drawer
- 1 Door
- 1 Adjustable Shelf



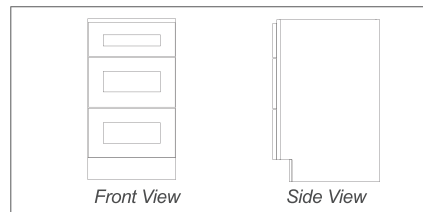
Item Code	Dimensions	Weight
SVA09B	9W x 33H x 21D	36 LB
SVA12B	12W x 33H x 21D	40 LB
SVA15B	15W x 33H x 21D	42 LB
SVA18B	18W x 33H x 21D	47 LB
SVA21B	21W x 33H x 21D	52 LB



Notes: Underlined Item Codes Indicate Replacement Parts.

### Features

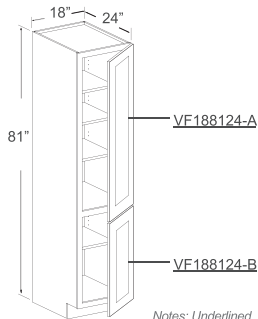
- 1 Small Drawer
- 2 Large Drawers



Item Code	Dimensions	Weight
SVA09D	9W x 33H x 21D	53 LB
SVA12D	12W x 33H x 21D	60 LB
SVA15D	15W x 33H x 21D	66 LB
SVA18D	18W x 33H x 21D	70 LB
SVA21D	21W x 33H x 21D	75 LB
SVA24D	24W x 33H x 21D	79 LB

**\*PLEASE CALL FIRST\*** All specifications are subject to change without notice. All images are for reference only. To ensure the highest satisfaction, we strongly recommend you view an actual sample for product style and construction.

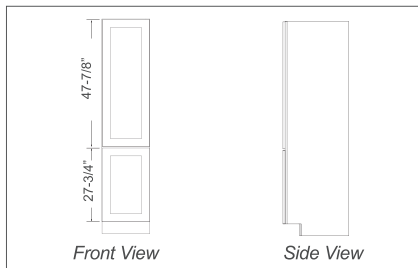
## Vanity Linen Cabinet



### Features

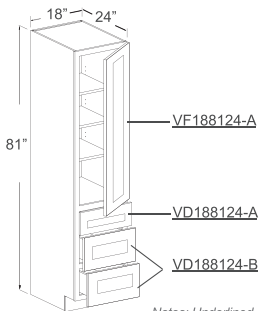
- 2 Doors
- 4 Adjustable Shelves

Notes: Underlined Item Codes Indicate Replacement Parts.



Item Code	Dimensions	Weight
SVA188124B	18W x 81H x 24D	103 LB

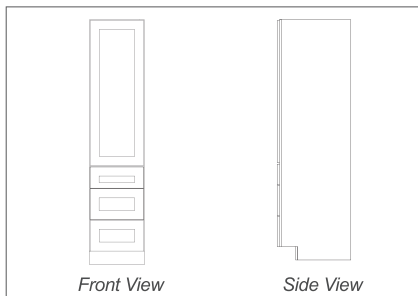
## Vanity Drawer Linen Cabinet



### Features

- 1 Door
- 3 Adjustable Shelves
- 1 Small Bottom Drawer
- 2 Large Bottom Drawers

Notes: Underlined Item Codes Indicate Replacement Parts.



Item Code	Dimensions	Weight
SVA188124D	18W x 81H x 24D	145 LB

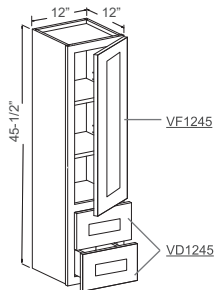
BATHROOM VANITIES

**\*PLEASE CALL FIRST\*** Availability for a particular product style and color may vary depending on showroom locations. Please check with your local J&K Cabinetry showroom or dealer for current availability before planning your projects.

# BATHROOM VANITIES



## Vanity Counter Linen Cabinet

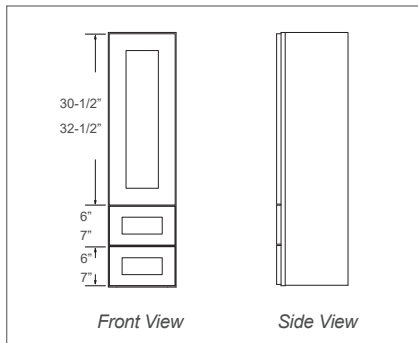


### Features

- 1 Door
- 2 Adjustable Shelves
- 2 Small Drawers

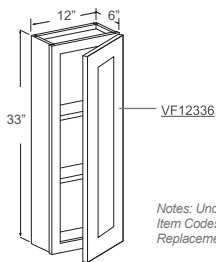
Notes: Underlined  
Item Codes Indicate  
Replacement Parts.

Door style	Drawer Height
K10, K3, K8, A7, M01	6"
CO66, J5, S8, S5, S2, S1 H9, H8, H3, E1, E2	7"



Item Code	Dimensions	Weight
DV1245	12W x 45-1/2H x 12D	42 LB

## Vanity Medicine Cabinet



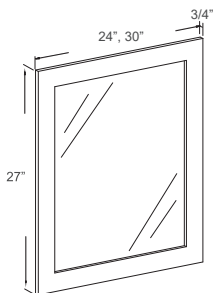
### Features

- 1 Door
- 2 Adjustable Shelves

Notes: Underlined  
Item Codes Indicate  
Replacement Parts.

Item Code	Dimensions	Weight
* WV12336	12W x 33H x 6D	18 LB

## Vanity Mirror



### Features

- Wooden Frame
- Beveled Edge Mirror (Not Tempered)

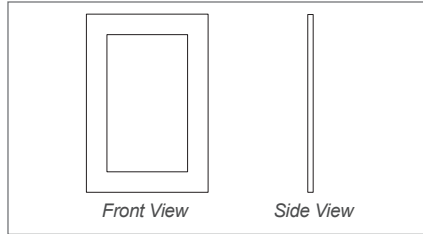
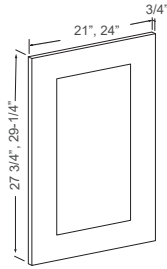
Notes: Hanging Hardware NOT Included

Item Code	Dimensions	Weight
SVAM2427	24W x 27H x 3/4D	15 LB
SVAM3027	30W x 27H x 3/4D	20 LB

**\*PLEASE CALL FIRST\*** All specifications are subject to change without notice. All images are for reference only. To ensure the highest satisfaction, we strongly recommend you view an actual sample for product style and construction.



Dummy Door Panel



**Features**

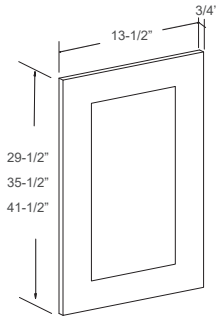
- 1 Dummy Door Panel

Notes: NOT For Replacement

Vanity \*  
Kitchen

Item Code	Dimensions	Weight
BDD21	21W x 27-3/4H x 3/4D	9 LB
BDD24	24W x 29-1/4H x 3/4D	10 LB

Dummy Pantry Upper Door Panel



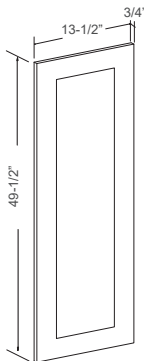
**Features**

- 1 Dummy Door Panel

Notes: NOT For Replacement

Item Code	Dimensions	Weight
* PDDU27-A	13-1/2W x 29-1/2H x 3/4D	8 LB
* PDDU27-B	13-1/2W x 35-1/2H x 3/4D	10 LB
* PDDU27-C	13-1/2W x 41-1/2H x 3/4D	12 LB

Dummy Pantry Lower Door Panel



**Features**

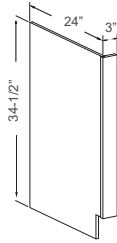
- 1 Dummy Door Panel

Notes: NOT For Replacement

Item Code	Dimensions	Weight
* PDDL27	13-1/2W x 49-1/2H x 3/4D	9 LB

**\*PLEASE CALL FIRST\*** Availability for a particular product style and color may vary depending on showroom locations. Please check with your local J&K Cabinetry showroom or dealer for current availability before planning your projects.

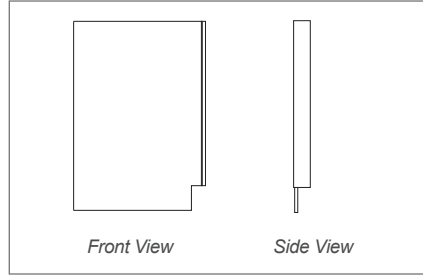
## Dishwasher Panel with Return Filler (L/R)



### Features

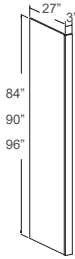
- 3" Return Filler
- 5/8" Thick Panel
- Matching Color on Filler

Notes: NOT Assembled & Toe Kick NOT Included



Item Code	Dimensions	Weight
DWR (L/R)	3W x 34-1/2H x 24D	10 LB

## Refrigerator Panel with Return Filler

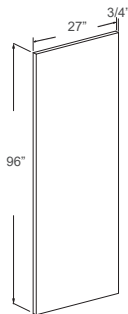


### Features

- 3" Return Filler
- 5/8" Thick Panel
- Matching Color on Exterior
- Both Faces Finished

Item Code	Dimensions	Weight
* RRP8427	3W x 84H x 27D	37 LB
* RRP9027	3W x 90H x 27D	38 LB
RRP9627	3W x 96H x 27D	40 LB

## Refrigerator Panel



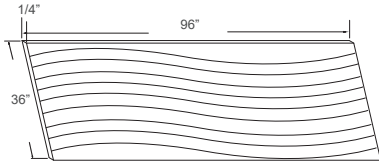
### Features

- 3/4" Thick Panel
- 4 Side-Edge Banded
- Matching Color on All Sides & Surfaces

Item Code	Dimensions	Weight
RRP9627*3/4	3/4W x 96H x 27D	50 LB

**\*PLEASE CALL FIRST\*** Availability for a particular product style and color may vary depending on showroom locations. Please check with your local J&K Cabinetry showroom or dealer for current availability before planning your projects.

## Finished Skin Panel

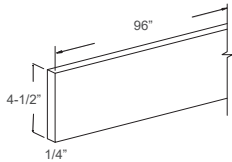


### Features

- Long Grain Pattern in 36"H & 42"H Panels
- Matching Color on One Side

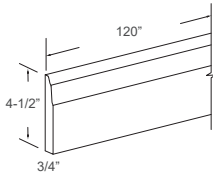
Item Code	Dimensions	Weight
BP9636	96W x 36H x 1/4D	12 LB

## Toe Kick



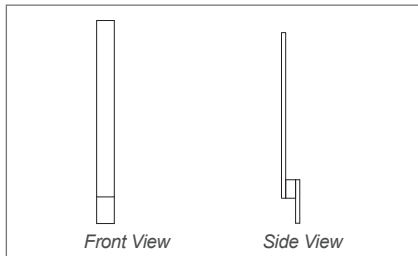
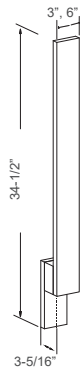
Item Code	Dimensions	Weight
TK8	4-1/2W x 96H x 1/4D	0.8 LB

## Base Molding



Item Code	Dimensions	Weight
BM10-4-1/2	4-1/2W x 120H x 3/4D	8 LB

## Base Filler



Item Code	Dimensions	Weight
BF3	3W x 34-1/2H x 3/4D	2 LB
BF6	6W x 34-1/2H x 3/4D	4 LB

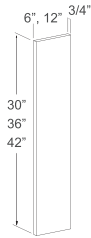
**\*PLEASE CALL FIRST\*** All specifications are subject to change without notice. All images are for reference only. To ensure the highest satisfaction, we strongly recommend you view an actual sample for product style and construction.

## Wall Filler



Item Code	Dimensions	Weight
WF330	3W x 30H x 3/4D	1 LB
WF336	3W x 36H x 3/4D	2 LB
WF342	3W x 42H x 3/4D	2 LB

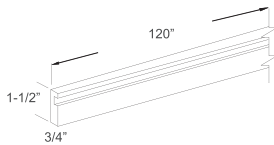
## Wall Filler



NOT Available For E1, E2 : WF1236

Item Code	Dimensions	Weight
WF630	6W x 30H x 3/4D	3 LB
WF636	6W x 36H x 3/4D	5 LB
WF1236	12W x 36H x 3/4D	6 LB
WF642	6W x 42H x 3/4D	4 LB

## Tall Filler

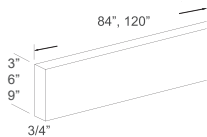


Notes:

Dadoed. Good for Refrigerator Return use and Semi-custom cabinets.

Item Code	Dimensions	Weight
CM34-1-1/2	1-1/2W x 120H x 3/4D	3 LB

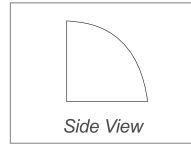
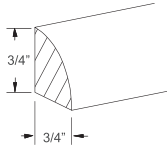
## Tall Filler



Item Code	Dimensions	Weight
CM34-3	3W x 120H x 3/4D	6 LB
CM34-6	6W x 120H x 3/4D	10 LB
CM34-9	9W x 84H x 3/4D	14 LB

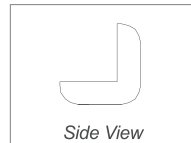
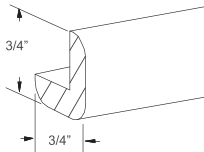
**\*PLEASE CALL FIRST\*** Availability for a particular product style and color may vary depending on showroom locations. Please check with your local J&K Cabinetry showroom or dealer for current availability before planning your projects.

## Quarter Round



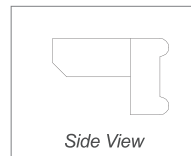
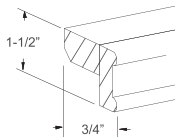
Item Code	Dimensions	Weight
QRM10	3/4H x 3/4D x 120L	1 LB

## Outside Corner



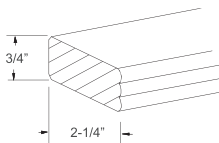
Item Code	Dimensions	Weight
OCM8	3/4H x 3/4D x 96L	0.7 LB

## Traditional Light Rail



Item Code	Dimensions	Weight
TLR10-A	1-1/2H x 3/4D x 120L	5 LB

## Wide Beaded



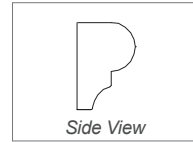
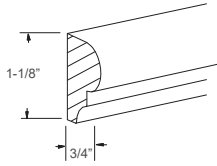
Check Color

Item Code	Dimensions	Weight
* WPM10	2-1/4H x 3/4D x 120L	5 LB

MOLDINGS

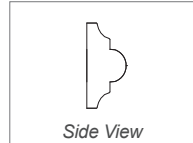
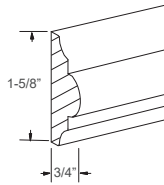
**\*PLEASE CALL FIRST\*** Availability for a particular product style and color may vary depending on showroom locations. Please check with your local J&K Cabinetry showroom or dealer for current availability before planning your projects.

## Chair Rail



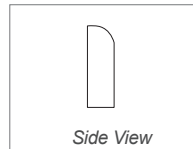
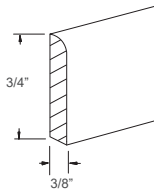
Item Code	Dimensions	Weight
* CR10	1-1/8H x 3/4D x 120L	2 LB

## Full Chair Rail



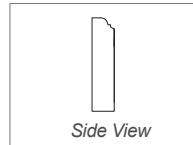
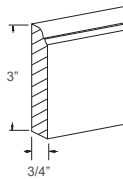
Item Code	Dimensions	Weight
* FSM10	1-5/8H x 3/4D x 120L	2 LB

## Scribe



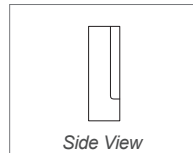
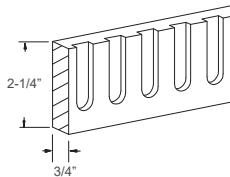
Item Code	Dimensions	Weight
SM8	3/4H x 3/8D x 96L	0.5 LB

## Ogee



Item Code	Dimensions	Weight
OGM10	3H x 3/4D x 120L	6 LB

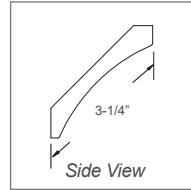
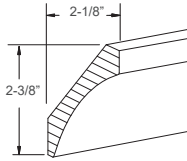
## Wide Dentil



Item Code	Dimensions	Weight
* WDM10	2-1/4H x 3/4D x 120L	*

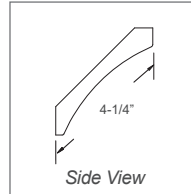
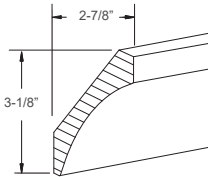
**\*PLEASE CALL FIRST\*** Availability for a particular product style and color may vary depending on showroom locations. Please check with your local J&K Cabinetry showroom or dealer for current availability before planning your projects.

Cove



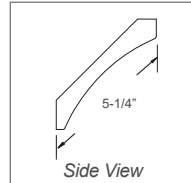
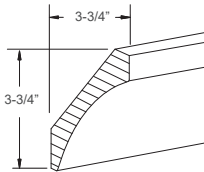
Item Code	Dimensions	Weight
ST10	2-3/8H x 2-1/8D x 120L	4 LB

Cove



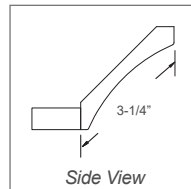
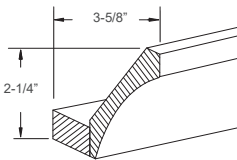
Item Code	Dimensions	Weight
ST10-- 4-1/4	3-1/8H x 2-7/8D x 120L	6 LB

Large Cove



Item Code	Dimensions	Weight
ST10-- 5-1/4	3-3/4H x 3-3/4D x 120L	4 LB

Cove with Base

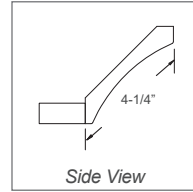
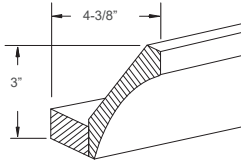


Item Code	Dimensions	Weight
AST10-- 3-1/4	2-1/4H x 3-5/8D x 120L	7 LB

MOLDINGS

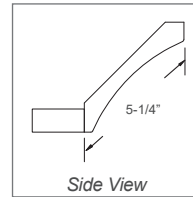
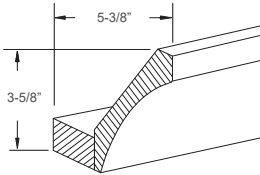
**\*PLEASE CALL FIRST\*** All specifications are subject to change without notice. All images are for reference only. To ensure the highest satisfaction, we strongly recommend you view an actual sample for product style and construction.

## Cove with Base



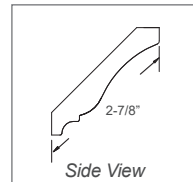
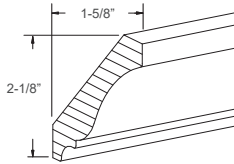
Item Code	Dimensions	Weight
AST10-- 4-1/4	3H x 4-3/8D x 120L	8 LB

## Large Cove With Base



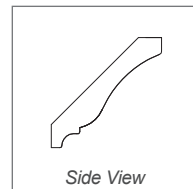
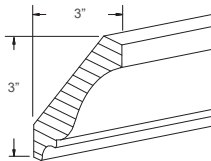
Item Code	Dimensions	Weight
AST10-- 5-1/4	3-5/8H x 5-3/8D x 120L	9 LB

## Crown



Item Code	Dimensions	Weight
CM10	2-1/8H x 1-5/8D x 120L	5 LB

## Crown

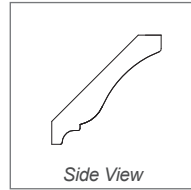
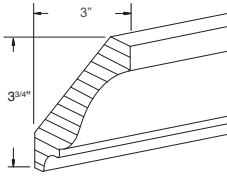


Item Code	Dimensions	Weight
CM10-- 4-1/4	4-1/4H x 3/4D x 120L	7 LB

**\*PLEASE CALL FIRST\*** Availability for a particular product style and color may vary depending on showroom locations. Please check with your local J&K Cabinetry showroom or dealer for current availability before planning your projects.

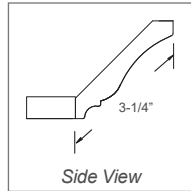
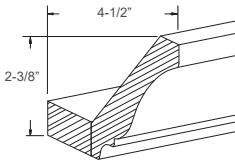


## Large Crown



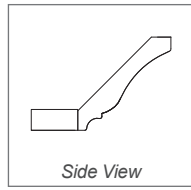
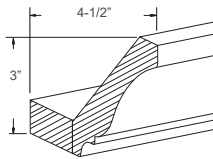
Item Code	Dimensions	Weight
CM10-- 5-1/4	5-1/4H x 3/4D x 120L	9 LB

## Crown with Base



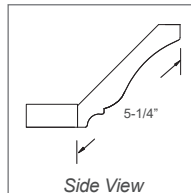
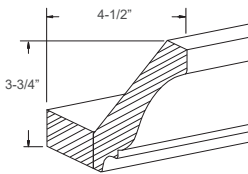
Item Code	Dimensions	Weight
ACM10-- 3-1/4	2-3/8H x 4-1/2D x 120L	8 LB

## Crown with Base



Item Code	Dimensions	Weight
ACM10-- 4-1/4	4-1/4H x 4-1/2D x 120L	10 LB

## Large Crown with Base

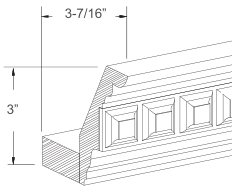


Item Code	Dimensions	Weight
ACM10-- 5-1/4	3-3/4H x 4-1/2D x 120L	12 LB

MOLDINGS

**\*PLEASE CALL FIRST\*** All specifications are subject to change without notice. All images are for reference only. To ensure the highest satisfaction, we strongly recommend you view an actual sample for product style and construction.

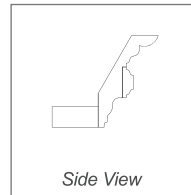
Dentil Crown with Base



NOT Available For S1, S2, S5, S8, H3, H8, H9, E1, E2  
: CCM10-B

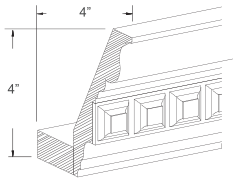
Check Color \*

Item Code	Dimensions	Weight
CCM10-B	3H x 3/4D x 120L	6 LB



Side View

Dentil Crown with Base



NOT Available For S1, S2, S5, S8, H3, H8, H9, E1, E2  
: CCM10-A

Check Color \*

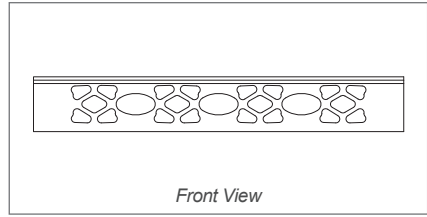
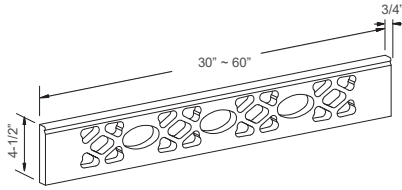
Item Code	Dimensions	Weight
CCM10-A	4H x 4D x 120L	9 LB



Side View

**\*PLEASE CALL FIRST\*** Availability for a particular product style and color may vary depending on showroom locations. Please check with your local J&K Cabinetry showroom or dealer for current availability before planning your projects.

Frieze Valance

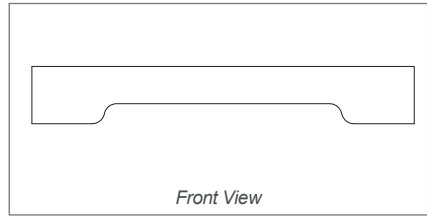
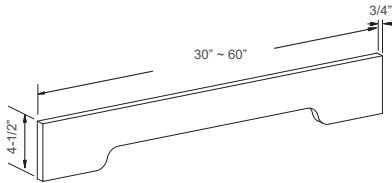


Front View

NOT Available For E1, E2 :  
V30A, V33A, V36A, V42A, V48A, V54A, V60A

Item Code	Dimensions	Weight
V30A	30W x 4-1/2H x 3/4D	2 LB
V33A	33W x 4-1/2H x 3/4D	2 LB
V36A	36W x 4-1/2H x 3/4D	2 LB
V42A	42W x 4-1/2H x 3/4D	3 LB
V48A	48W x 4-1/2H x 3/4D	3 LB
V54A	54W x 4-1/2H x 3/4D	3 LB
V60A	60W x 4-1/2H x 3/4D	3 LB

Arch Valance



Front View

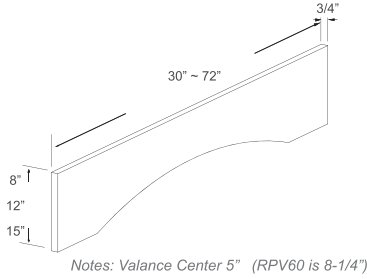
Item Code	Dimensions	Weight
V30B	30W x 4-1/2H x 3/4D	2 LB
V33B	33W x 4-1/2H x 3/4D	2 LB
V36B	36W x 4-1/2H x 3/4D	2 LB
V42B	42W x 4-1/2H x 3/4D	3 LB
V48B	48W x 4-1/2H x 3/4D	3 LB
V54B	54W x 4-1/2H x 3/4D	3 LB
V60B	60W x 4-1/2H x 3/4D	4 LB

**\*PLEASE CALL FIRST\*** Availability for a particular product style and color may vary depending on showroom locations. Please check with your local J&K Cabinetry showroom or dealer for current availability before planning your projects.

# VALANCES & DECOR BLOCKS

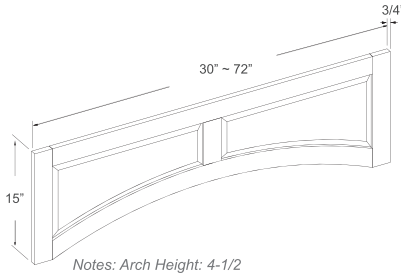


## Arch Valance



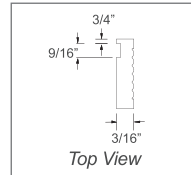
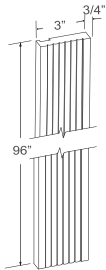
Item Code	Dimensions	Weight
RPV30	30W x 8H x 3/4D	4 LB
RPV36	36W x 8H x 3/4D	5 LB
RPV42	42W x 8H x 3/4D	6 LB
RPV48	48W x 8H x 3/4D	6 LB
RPV54	54W x 8H x 3/4D	5 LB
* RPV42-12	42W x 12H x 3/4D	9 LB
* RPV60-15	60W x 15H x 3/4D	11 LB
* RPV72-15	72W x 15H x 3/4D	15 LB

## Arch Valance with Raised Panel



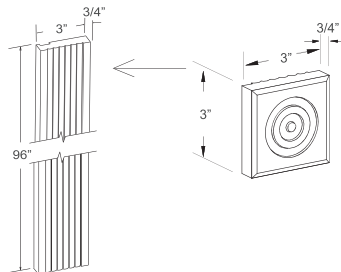
Item Code	Dimensions	Weight
RPV30-A	30W x 15H x 3/4D	6 LB
RPV36-A	36W x 15H x 3/4D	6 LB
RPV42-A	42W x 15H x 3/4D	8 LB
RPV48-A	48W x 15H x 3/4D	9 LB
RPV54-A	54W x 15H x 3/4D	9 LB
RPV60-A	60W x 15H x 3/4D	10 LB
RPV72-A	72W x 15H x 3/4D	14 LB

## Fluted Filler



Item Code	Dimensions	Weight
PCVFF3	3W x 96H x 3/4D	4 LB

## Rosette Block



Item Code	Dimensions	Weight
FB3*3	3W x 3H x 3/4D	0.2 LB

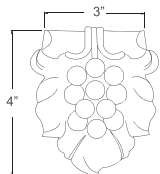
**\*PLEASE CALL FIRST\*** All specifications are subject to change without notice. All images are for reference only. To ensure the highest satisfaction, we strongly recommend you view an actual sample for product style and construction.

# ONLAYS, CORBELS & POSTS

Check Color



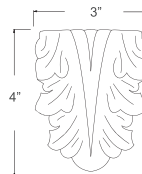
## Grape Ornament



NOT Available For E1, E2 : SGO

Item Code	Dimensions	Weight
* SGO	3W x 4H x 3/4D	0.1 LB

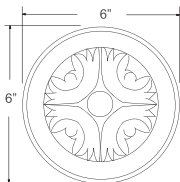
## Leaf Ornament



NOT Available For E1, E2 : RGO

Item Code	Dimensions	Weight
* RGO	3W x 4H x 3/4D	0.1 LB

## Round Ornament



NOT Available For E1, E2 : ASO

Item Code	Dimensions	Weight
* ASO	6W x 6H x 3/4D	0.6 LB

## Leaf Onlay



NOT Available For E1, E2 : AB

Item Code	Dimensions	Weight
* AB	13-3/4W x 4H x 3/4D	0.3 LB

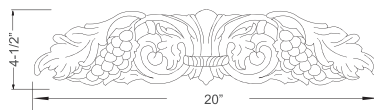
## Shell Onlay



NOT Available For E1, E2 : AC

Item Code	Dimensions	Weight
* AC	18-1/2W x 3-1/2H x 1/2D	0.4 LB

## Grape Onlay



NOT Available For E1, E2 : GRPO

Item Code	Dimensions	Weight
GRPO	20W x 4-1/2H x 3/4D	1.2 LB

## Large Leaf Onlay



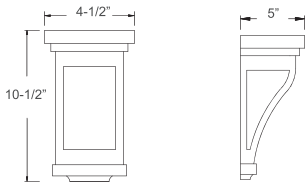
NOT Available For E1, E2 : RRPO

Item Code	Dimensions	Weight
RRPO	20W x 4-1/2H x 3/4D	1.2 LB

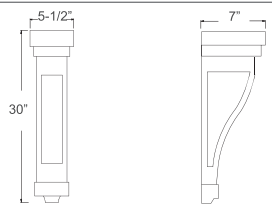
ONLAYS CORBELS & POSTS

**\*PLEASE CALL FIRST\*** Availability for a particular product style and color may vary depending on showroom locations. Please check with your local J&K Cabinetry showroom or dealer for current availability before planning your projects.

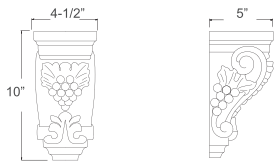
Mission Corbel  
Large Mission Corbel  
Grape Corbel  
Narrow Grape Corbel



Item Code	Dimensions	Weight
SC58	4-1/2W x 10-1/2"H x 5D	3 LB

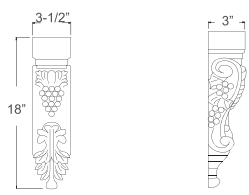


Item Code	Dimensions	Weight
SC530	5-1/2W x 30H x 7D	13 LB



*NOT Available For E1, E2 : GC58*

Item Code	Dimensions	Weight
GC58	4-1/2W x 10H x 5D	3 LB

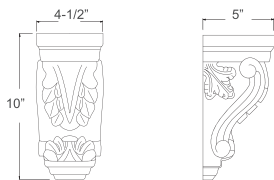


*NOT Available For E1, E2 : OLC318*

Item Code	Dimensions	Weight
OLC318	3-1/2W x 18H x 3D	1.4 LB

**\*PLEASE CALL FIRST\*** All specifications are subject to change without notice. All images are for reference only. To ensure the highest satisfaction, we strongly recommend you view an actual sample for product style and construction.

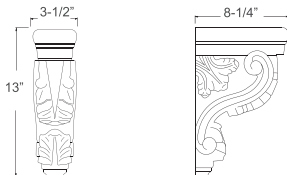
**Acanthus Corbel**



NOT Available For E1, E2 : RC58

Item Code	Dimensions	Weight
RC58	4-1/2W x 10H x 5D	3 LB

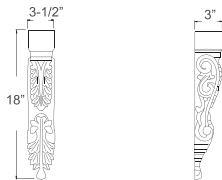
**Acanthus Corbel**



NOT Available For E1, E2 : RC313

Item Code	Dimensions	Weight
RC313	3-1/2W x 13H x 8-1/4D	5 LB

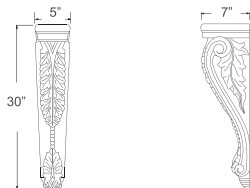
**Narrow Acanthus Corbel**



NOT Available For E1, E2 : RLC318

Item Code	Dimensions	Weight
RLC318	3-1/2W x 18H x 3D	1.4 LB

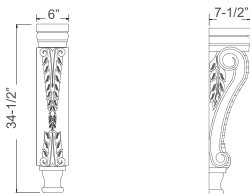
**Large Acanthus Corbel**



NOT Available For E1, E2 : RC530

Item Code	Dimensions	Weight
RC530	5W x 30H x 7D	14 LB

**Large Acanthus Corbel**



NOT Available For E1, E2 : CB34-1/2

Item Code	Dimensions	Weight
CB34-1/2	6W x 34-1/2H x 7-1/2D	24 LB

**PLEASE CALL FIRST:** Availability for a particular product style and color may vary depending on showroom locations. Please check with your local J&K Cabinetry showroom or dealer for current availability before planning your projects.

## Full Turn Post



NOT Available For E1, E2 : FTP4X4

Item Code	Dimensions	Weight
SP3X34-1/2	3W x 34-1/2H x 3D	5 LB
FTP4X4	4W x 34-1/2H x 4D	1 LB

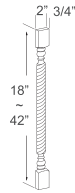
## Twisted Full Turn Post



NOT Available For E1, E2 : RP34-1/2

Item Code	Dimensions	Weight
RP34-1/2	3W x 34-1/2H x 3D	6 LB

## Twisted Split Turn Post



NOT Available For E1, E2 : RPS18-42

Item Code	Dimensions	Weight
RPS18	2W x 18H x 3/4D	0.6 LB
RPS24	2W x 24H x 3/4D	0.6 LB
RPS30	2W x 30H x 3/4D	1 LB
RPS36	2W x 36H x 3/4D	1 LB
RPS42	2W x 42H x 3/4D	1 LB

## Tulip Foot



Check Color \*

Item Code	Dimensions	Weight
TF	2-3/4W x 4-1/2H x 2-3/4D	0.5 LB

**\*PLEASE CALL FIRST\*** All specifications are subject to change without notice. All images are for reference only. To ensure the highest satisfaction, we strongly recommend you view an actual sample for product style and construction.





**JK10 Cabinetry Denver**  
4860 Joliet Street  
Denver CO 89029

303-996-6666  
sales@jk10cabinetry.com

**[www.jk10cabinetry.com](http://www.jk10cabinetry.com)**



**J&K Cabinetry**  
*Corporate Headquarters*  
P.O. Box 250  
Hicksville, NY 11802

**[www.jandkcabinetry.com](http://www.jandkcabinetry.com)**