



Corporate, Group and Board Retreats 2024/2025.



TWIN LAKES · WARTON · LANCASHIRE

www.twinlakesholidayhomes.com

HOLD YOUR NEXT COMPANY RETREAT OR BOARD MEETING AT TWIN LAKES

Corporate Retreats at Twin Lakes Holiday Homes

We can organize bookings of luxury [lodges](#) for executive retreats or small company get togethers. The Lake District is a perfect environment to stimulate creativity. Book multiple lodges to accommodate your company retreat. We will help you organise it. Twin Lakes is situated in the ideal spot for corporate getaways in the Lake District with a little R&R.

Your Corporate break includes:

- . An Event Host
- . Tailored catering packages including an [outside bar](#)
- . Offsite team building [activities](#)
- . 5-star accommodation in a luxury holiday home sleeping up to 6 or 8 people, with a private [hot tub](#)
- . Stunning lakeside views
- . Free Premium Wi-Fi

To create your bespoke Corporate Package, call us on 07411223221 or email martin@lodgequest.com. Prices available on application. Terms and conditions apply.



WARTON
VILLAGE
ENGLAND
EST. 1086



TWIN LAKES

A Luxury Lifestyle Retreat



Example of what previous clients have experienced. Your days can be arranged completely bespoke

WARTON
VILLAGE
ENGLAND
EST. 1086



TWIN LAKES
A Luxury Lifestyle Retreat

Accommodation	2 Houses adjacent	3 Houses adjacent
Sleeps	6 Single Occupancy 12 Double Occupancy 6 Bathrooms	9 Single Occupancy 18 Double Occupancy 9 Bathrooms
Facilities	House 1: Meeting Space & Whiteboard / Room & Meals	House 1: Meeting Space & Whiteboard
Facilities	House 2: Entertainment/ TV	House 2: Kitchen and Meals
Facilities		House 3 Entertainment / TV
Outside	Lake Views / Possible Grilling	Lake Views / Possible Grilling

	(one overnight)	(two overnights)
Activity Day 1	<ul style="list-style-type: none"> • Morning Meeting • Mid Day Lunch Catered by Farm Shop 	<ul style="list-style-type: none"> • Morning Meeting • Mid Day Lunch Catered by Farm Shop
Activity Evening 1	<ul style="list-style-type: none"> • Pub Meal- 2 Minutes away • Or Take out options 	<ul style="list-style-type: none"> • Pub Meal- 2 Minutes away • Or Take out options
Activity Day 2	<ul style="list-style-type: none"> • Team Building Workshops • Lunch Catered by Farms Shop • Meeting Summary • Departure 	<ul style="list-style-type: none"> • Team Building Workshops • Hiking at Warton Craig / or organized Team Building activity at TL
Activity Evening 2		<ul style="list-style-type: none"> • Grill Evening or Nearby Restaurant • Special Pub on Site just for your group
Activity Day 3		<ul style="list-style-type: none"> • Blue Sky Thinking Workshops • Lunch Catered by Farms Shop • Meeting Summary • Departure
<p><i>Example of what previous clients have experienced. Your days can be arranged completely bespoke</i></p>		

SITE PLAN & WHAT IS THERE TO DO ONSITE

WARTON VILLAGE ENGLAND EST. 1086



TWIN LAKES
A Luxury Lifestyle Retreat



- 1) Dales Lookout
- 2) Wharton Craig View
- 3) Yealand Sighting
- 4) Sanctuary Landing
- 5) Woodland Opening
- 6) Nature Nook
- 7) Yealand Path
- 8) Greenlands Path
- 9) Woodland Trail
- 10) To the Village
- 11) Togetherness Point
- 12) The Beach Retreat

HARRISON PITT ARCHITECTS

 29 CASTLE HILL
 LANCASTER
 LA1 1YN
 Tel: 01524 32479
hpa@hparch.co.uk
www.hparch.co.uk

PROJECT TITLE
 Proposed Luxury Lodge Development
 Twin Lakes Country Club
 Carnforth, Lancashire

CLIENT
 for LodgeQuest

0 25 50m
 DO NOT SCALE SITE DIMS FROM THIS DRAWING

REV	DATE	DRWN	CHKD	REVISION/DETAILS

© Harrison & Pitt Architects Ltd

DRAWING TITLE
 SITE PLAN OPTIONS
 6No ADDITIONAL LODGES &
 CLUB HOUSE

DRAWING STATUS
 SKETCH

DRAWING No.
 2460-SK03a

REVISION
 -

SCALE : 1:1250 @ A2

DATE : Nov 2023

DRAWN : SR

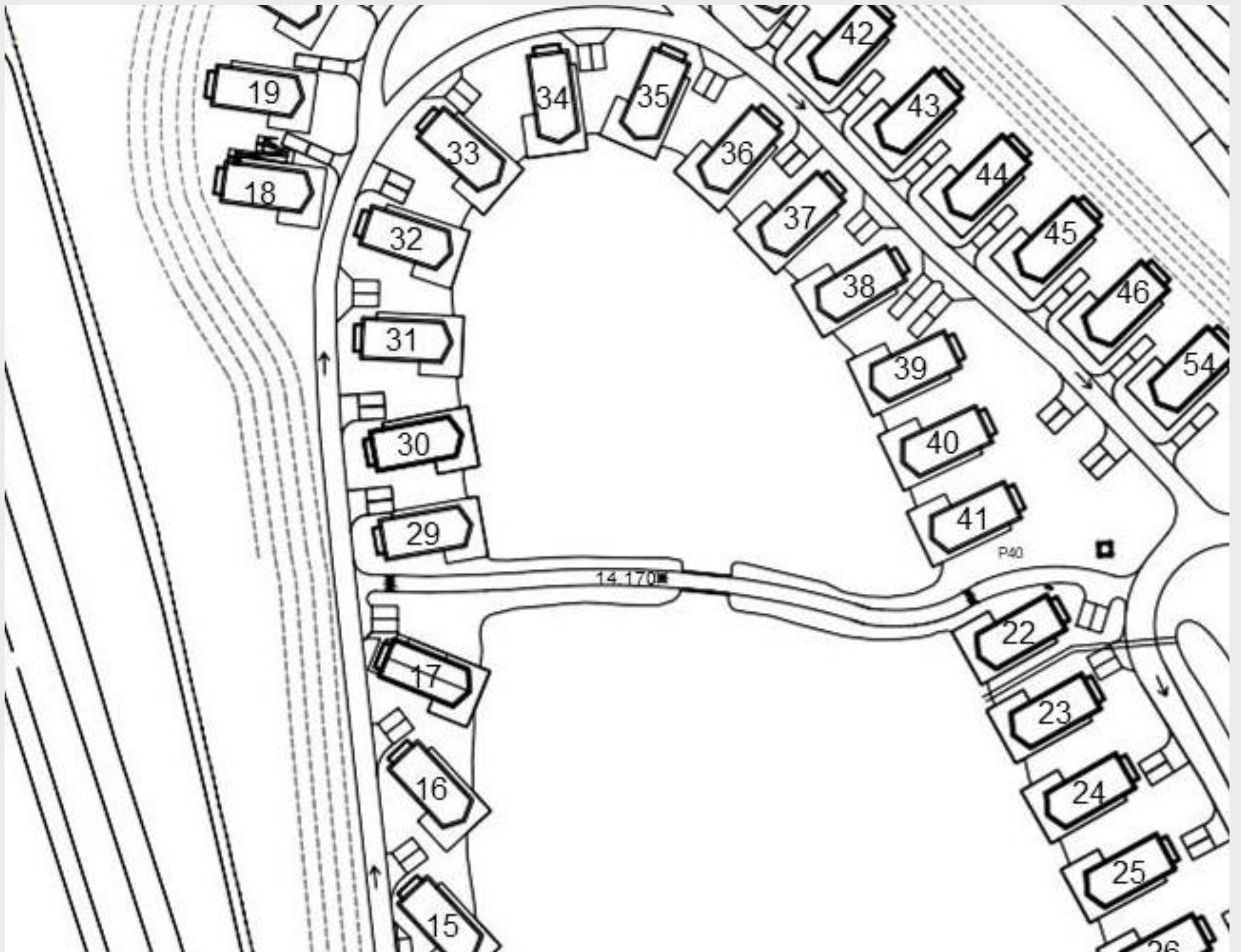
CHECKED : ARW

YOUR CORPORATE RETREAT LOCATION

WARTON
VILLAGE
ENGLAND
EST. 1086



TWIN LAKES
A Luxury Lifestyle Retreat

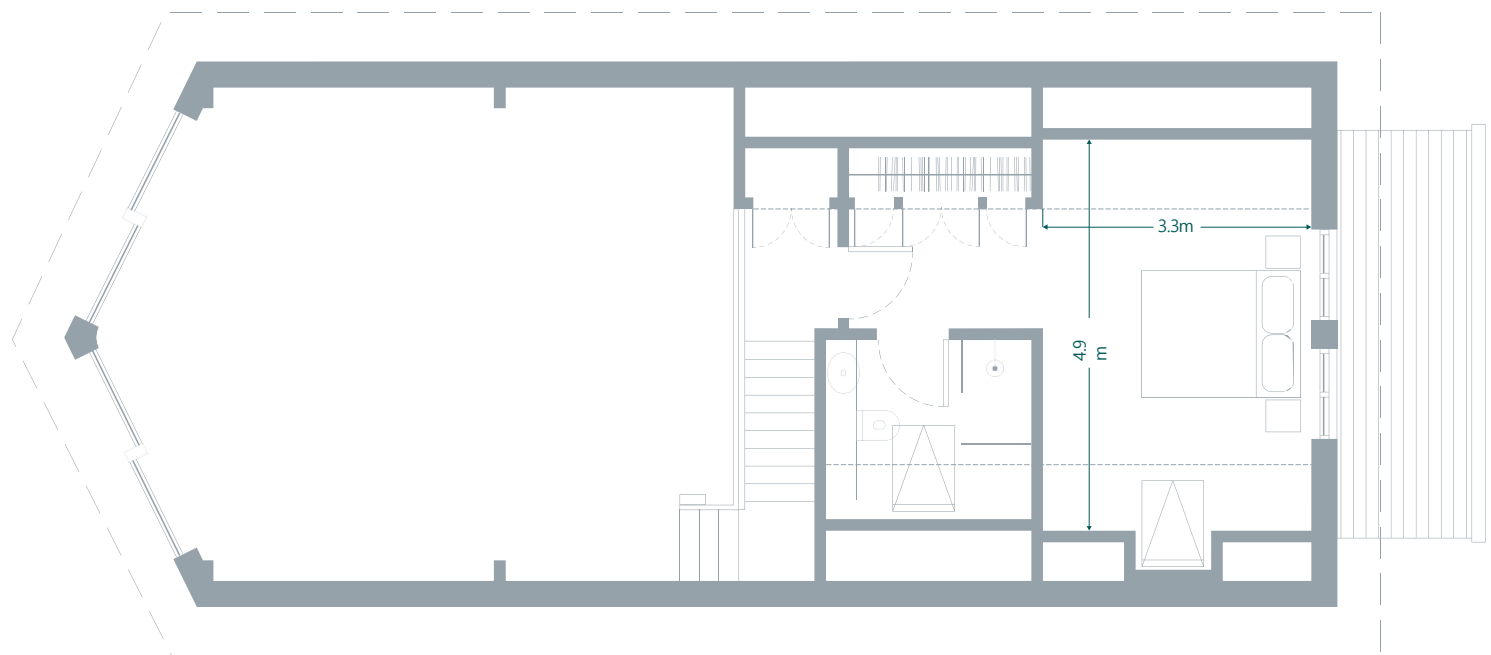
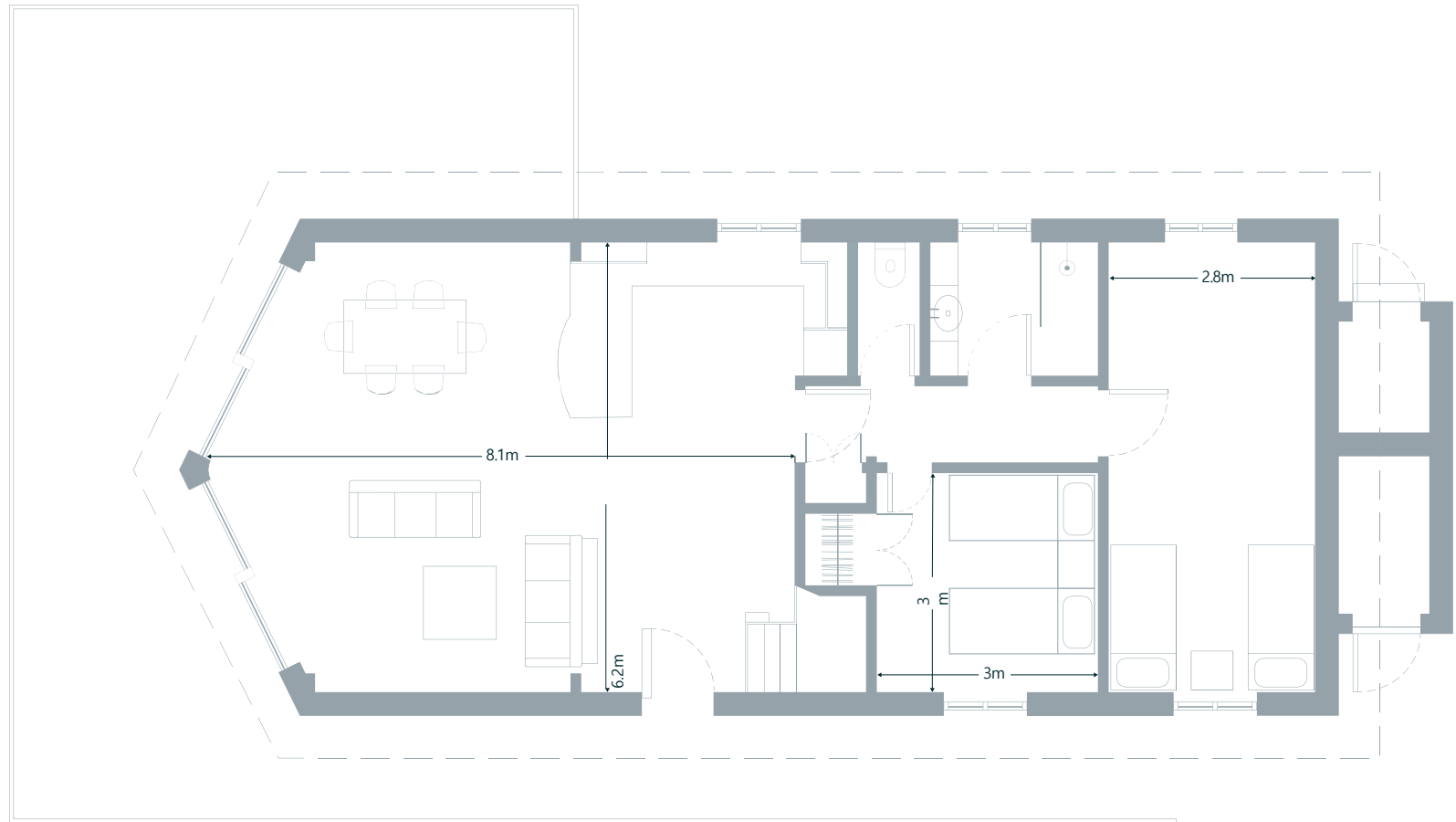


YOUR CORPORATE RETREAT LOCATION

- | | | | | |
|-----|-----------|----------------|---|------------|
| a.) | 3 Houses: | House 29+30+31 | - | 9 Bedrooms |
| b.) | 3 Houses: | House 30+31+32 | - | 9 Bedrooms |
| c.) | 2 Houses: | House 22+23 | - | 6 Bedrooms |
| d.) | 2 Houses: | House 32+33 | - | 6 Bedrooms |

3-BEDROOM LAKEFRONT HOUSES

Each are 130m²



Book 2 or 3 of these houses adjacent for your event or retreat. As an option: Book a pub on-site just for your group.



PLENTY OF OUTDOOR AND INDOOR SPACE FOR BREAK OUT GROUPS AND PRIVATE CONVERSATIONS



WARTON
VILLAGE
ENGLAND
EST. 1086



TWIN LAKES
A Luxury Lifestyle Retreat

QUALITY DESIGNED INTERIORS OFFER COMFORTABLE ACCOMMODATION FOR ANY EXECUTIVE



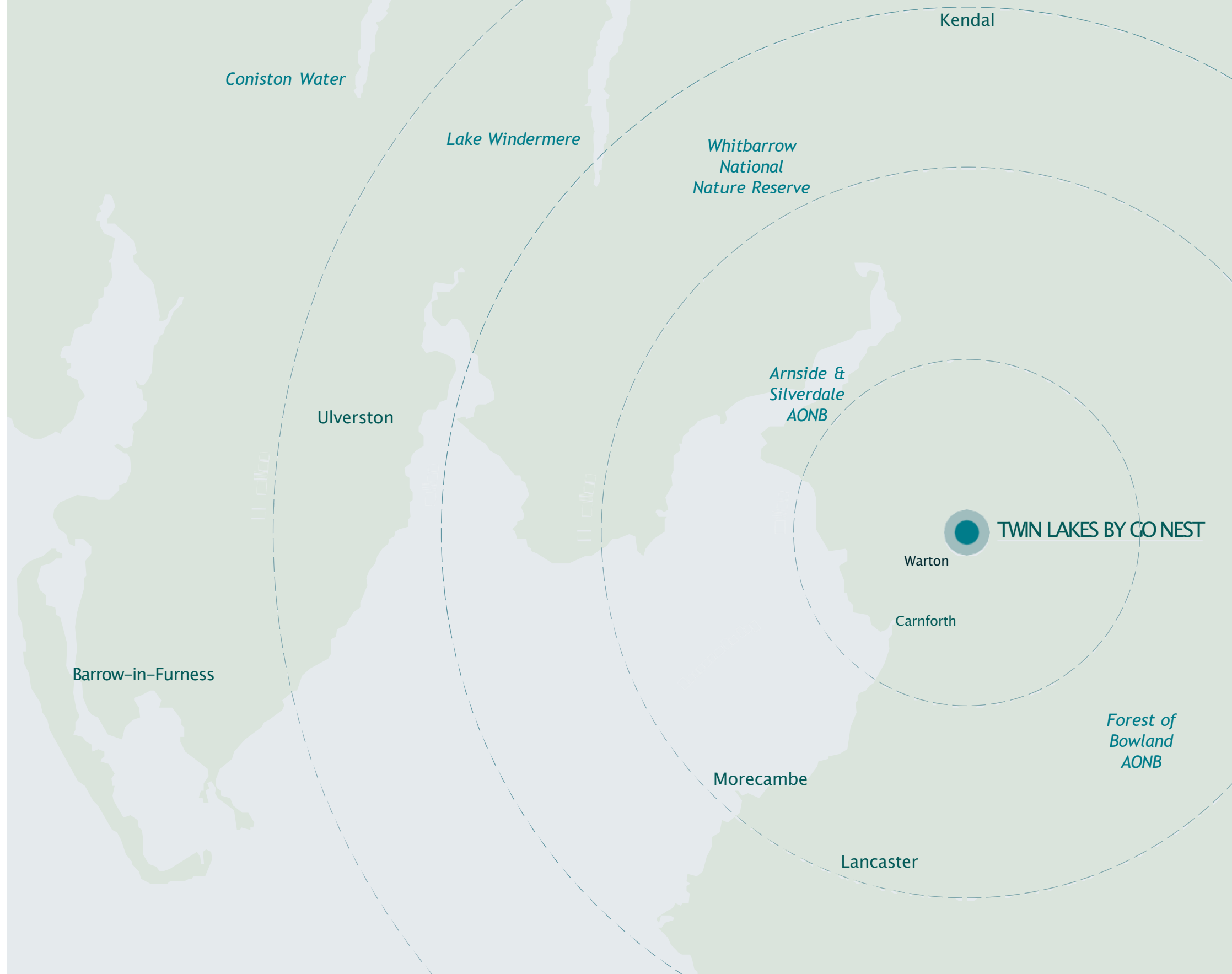
WARTON
VILLAGE
ENGLAND
EST. 1086



SATISFIED CORPORATE and COMPANY CUSTOMERS



Twin Lakes is only 8 minutes from the Eden Project which is the new GBP 100 million Eden Project of The North bringing increased tourism to this Eco site from 2026.



Twin Lakes is near the Village of Warton. Exiting the main gates of Twin Lakes one can walk or drive towards the village of Warton, first mentioned in the Domesday book in 1086. A sidewalk across the round-about towards country lane hedges of Borwick Lane. The village boasts 3 pubs, a craft brewery, and access to the Warton Craig with sweeping views over Morecambe bay. Remember perhaps visits to Longdales, or nearby 3000 year old Glenriddig, Graythwaite Hall, the Holker Hall gardens, UNESCO Heritage site Rydal Hall and other destinations within 30 minute and an hours drive from Twin Lakes.

NEARBY

Manchester Airport	66 miles
Leeds Bradford Airport	59 miles
Teeside Airport	83 miles
Carnforth Rail Station	2.4 miles
Arnside Rail Station	6.8 miles
Supermarket	1.9 miles
Restaurants	0.5 miles

EATING & DRINKING

Greenlands Bistro & Kitchen	1800ft
Greenlands Farm & Wine shop	1800ft
Longlands Pub	1500ft
Washington Pub	1.5 miles
Schoolhouse Local Brewery & Pub/Bistro	1.5 miles

PLACES OF INTEREST

Beaches	5 miles
Wildlife Park	3.4 miles
Marina	½ miles
Lake Windermere	2.4 miles
Morecambe	7.5 miles
Kendal	17 miles