

in weight was seen chasing young squawfish under the wharf at Horstman's Hotel. This was the only direct evidence of the past planting work. All the planting, except of redbfish, has been in relatively small amounts considering the size of the water to be stocked and the lack of positive evidence is not surprising.

No observations were made at Stanley Lake concerning the results from past plantings.



(upper) Little redbfish from Alturas Lake (Sawtooth mountains). The fish is a landlocked type of sockeye salmon found in Payette, Alturas and Redfish lakes. (lower) ouananiche and brook trout from Toxaway lake.

At the Lower Champion Lake the blackspotted trout from eggs sent from the Yellowstone National Park have thrived and the lake is well stocked. These fish average somewhat better than a pound each and are in excellent condition. They have a habit here of circling the lake shore in schools, as many as 70 fish being counted in one school. These fish evidently will not spawn until next year. A few landlocked salmon were seen and one, weighing one and one-quarter pounds, was taken by Mr. Keil. This lake is unsuited to the salmon since it is not over 20 acres in area and 25 feet in depth and has no inlet except small springs. About 500 of the salmon and 1500 Yellowstone trout were planted in 1922. An attempt has been made to establish silverside shiners here, but owing to the present stock of salmon and trout, the small size of the lake, and the lack of cover such as logs and debris for minnows, it is very doubtful if they can be established.

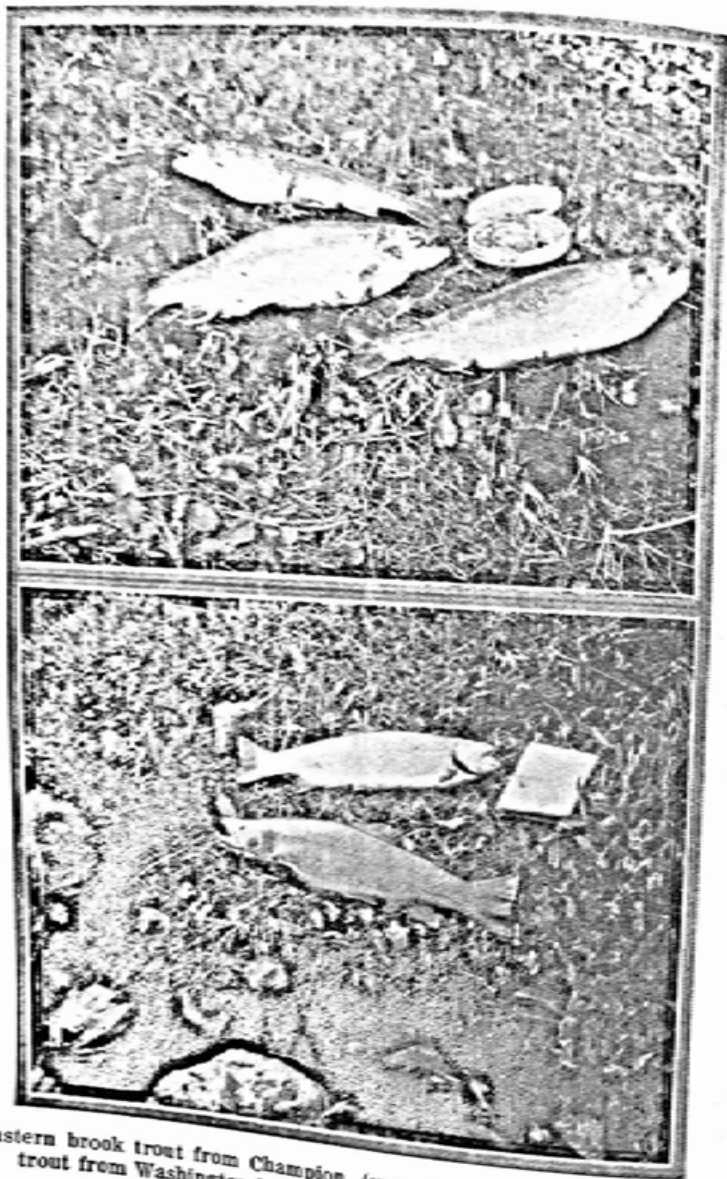
The Upper Champion Lake, which is considerably larger and deeper than the lower, is quite well stocked with eastern brook trout. There are also some Yellowstone trout there, slightly larger than those from the lower lake, and some rainbow trout about 4 to 5 pounds in weight. The eastern brook trout now weigh from two to two and three-fourths pounds and were planted in 1922. It is probable that the rainbow trout were planted in 1920. Both of these lakes contain an abundance of feed and the upper one has an excellent growth of vegetation over the greater proportion of the bottom. The eastern brook are excessively fat and the size of the body seems out of proportion to the fins on account of the rapid growth. These lakes are at 8,300 feet elevation. It was expected that the native fish at Washington Lake would be spawning and plans had been made to take spawn for planting in gravel. Owing to the early spring, the native trout had finished spawning and were back in the lake. It was a surprise to find that the rainbow trout were still spawning although they did not come into the outlet where they could be captured as do the native trout. About eight or ten spawning beds occupied by rainbow trout between two-thirds pounds in weight were seen along the shore and under some logs near the outlet. These fish very likely are from mixed stock since in general they resembled the steelhead but had a distinct red dentary marking typical of the cut-throat trout. They probably came from eggs taken at Fishlake and shipped to the Hayspur hatchery in 1920. Both the rainbow and native trout from Washington Lake were in excellent condition. This lake is about 9,300 feet elevation.

In general, satisfactory results from the past work are indicated, particularly in the high lakes. The lower waters are large in proportion to the plantings made and in view of the small amount of fishing done on the lakes it is not to be expected that more than a few of the planted fish would be taken already by anglers.

#### Future Planting

There are a few of the higher lakes which need additional stocking and these are listed as follows:

Alice Lake has had two plantings of rainbow trout and silverside shiners. It is large enough to justify continued planting of at least one or two packhorse loads per year. The upper of the Twin Lakes contains a few landlocked salmon but there is slight opportunity for them to increase and both of these Twin Lakes could almost be considered as vacant waters to be planted, perhaps



Eastern brook trout from Champion (upper) rainbow and cut-throat trout from Washington lake (lower) two years after planting.

the lower with eastern brook and the other with steelhead trout.

In the Yellowbelly drainage Hubert and May Lakes are still vacant and might be left for a possible planting of California golden trout at some future time. Since there seems to be a drift down from the vicinity of Farley Lake, these waters offer an excellent opportunity for the release of small fish which will eventually overtake waters lower down. Toxaway Lake is not fully stocked but spawning is taking place under fairly favorable conditions so continued stocking is not necessary. It is particularly desirable, however, to establish the silverside shiners there. Although large trout are already present there is excellent shelter for the shiners and continued plantings should be made in order to establish them if it is possible. There are two small lakes on the main inlet about a mile above the lake and it is possible that since these are vacant of fish life the minnows might become established there and the natural drift would eventually stock the main lake.

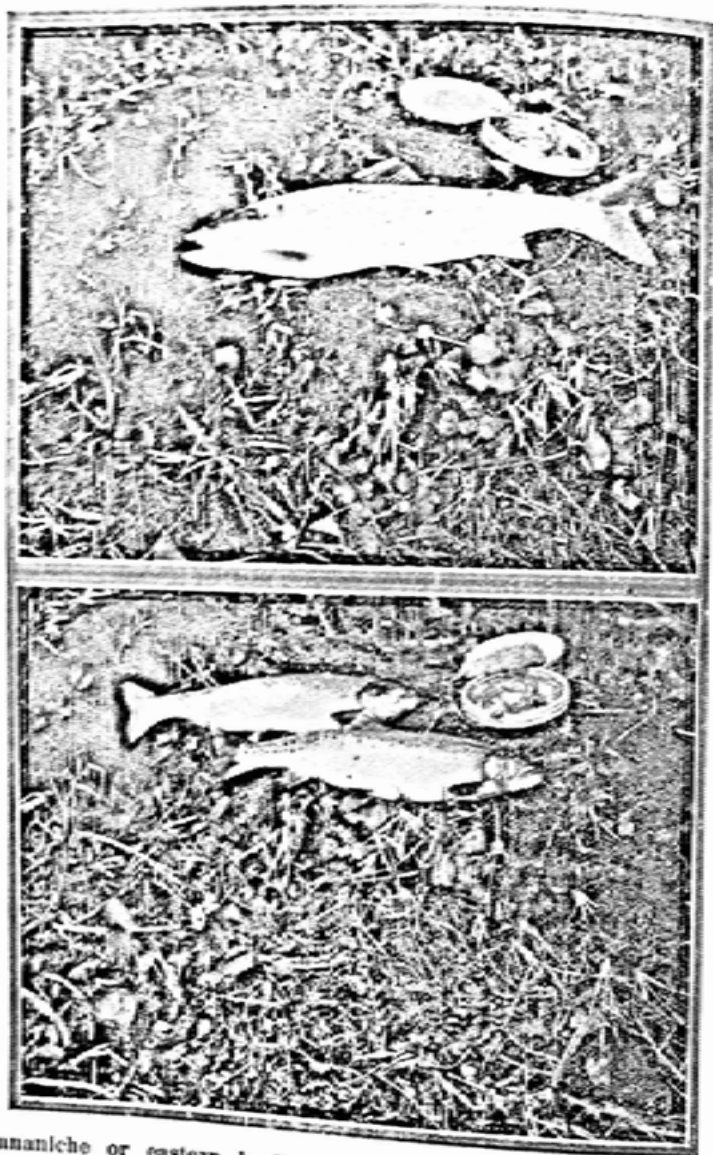
During this trip four lakes were found above Imogene Lake. These are from 15 to 20 acres each, although the upper one which was not visited may be larger, and as far as could be determined should be suitable for fish life. On account of the desirability of holding the Roaring Creek Lake and the others above for the steelhead native to the drainage and the landlocked salmon, other species should not be introduced. The upper lakes would be excellent planting waters for silverside shiners. With the establishment of the silverside shiners feed conditions and the spawning opportunities will be better here for landlocked salmon than in any of the other high lakes and if any of these fish were available another season a pack load could well be placed here. It was impossible to transfer additional steelhead trout from Roaring Lake this year but such action is very desirable since only 50 were transferred last year to Imogene Lake.

There are a number of high lakes above Redfish Lake yet unstocked which are suitable for fish. Those on the bench north of the lake are easily accessible by pack horse and offer an opportunity for the planting of eastern brook, rainbow and cut-throat trout in different lakes. It is quite possible that local people would cooperate in this work. The lakes on the upper inlet present a more difficult problem since it will probably be necessary to carry the fish several miles. This could very probably be done by placing a small can in a pack sack having shoulder straps. These are excellent lakes and it seems that for a small initial planting the effort would be worth while.

All of the lakes on the east side of the valley may now be considered amply stocked except for those under Castle Peak which should be left as possible planting water for the California golden trout, as should also be the basin of lakes on Alpine Creek above Alturas Lakes.

There are some excellent lakes on the head of the South Fork of the Payette River which should be stocked and fish once established there would stock a number of miles of excellent water below now vacant of fish life. It would not be difficult to reach these in a day's pack trip from Pettit Lake via Farley Lake and Edith Lake.

Following is a suggested program for continued planting in



Ouananiche or eastern landlocked salmon from Lower Champion Lake (upper). Yellowstone type black spotted trout from upper Champion, (lower.)

the high lakes. This would require a 7-day packing from Pettit Lake and one day from Redfish Lake with horses and two days back packing from Redfish Lake.

Above Pettit Lake, one trip, 4 pack horses.

Alice Lake, One Pack load rainbow trout.

One pack load silverside shiners.

Upper Twin Lake, One pack load steelhead trout.

One-Half pack load silverside shiners.

Lower Twin Lake, One-half pack load cut-throat trout.

Yellowbelly drainage, one trip, four packhorses.

Toxaway Lake, One pack silverside shiners.

Farley Lake, Two packs rainbow trout.

One pack eastern brook trout.

Imogene Lake, two pack horses.

Go from Pettit Lake via Farley and Imogene Lakes to Roaring Lake. Catch steelhead one day at Roaring Lake, return on third day planting steelhead in Imogene Lake on way back.

Lakes above Imogene Lake, one pack landlocked salmon or silverside shiners. One pack silverside shiners. Transfer as many steelhead as can be caught by log jam at lower end and in outlet of Roaring Lake.

South Fork Payette Lakes, Three packs fish, two days.

Two packs rainbow trout,

One pack silverside shiners.

Lakes north of Redfish Lake, one day, 3 packs.

One pack load eastern brook trout,

One pack load rainbow trout,

One pack load cut-throat trout.

Lakes at Upper inlet, two trips, 3 men.

South Fork Lakes, One can rainbow,

One can eastern brook,

One can cut-throat.

Main head lakes, One can rainbow,

One can eastern brook,

One can cut-throat.

The planting outlined above would require a total of 24 cans rainbow trout, 8 cans cut-throat trout, 10 cans eastern brook trout, 4 cans steelhead trout, and 4 cans landlocked salmon, not including the silverside shiners and native steelhead trout to be transferred.

A review of the number of fish planted in streams tributary to the main lakes indicates that an insufficient amount has been done to be considered anywhere near a full stocking and as part of a general program to build up the fishing in this section as well as to develop a possible spawn taking source, planting here should be continued. As a general statement, two truck loads for the inlets of Alturas, Pettit, Big Redfish, and Stanley Lakes would meet the requirements. Two truckloads divided between the head of March Creek and feeder streams to the Salmon River would be desirable in addition to the above.

A considerable number of these could be eastern brook and rainbow trout. By 1925 there would be available a local spawn supply of landlocked salmon but if any are available this next year it will certainly be desirable to continue the planting, particularly at Alturas, Redfish, and Imogene Lakes. Since indications seem favorable for this fish becoming established at Alturas Lake where there are very favorable spawning opportunities and an excellent place for spawn taking, it might be desirable to place a considerable portion of the supply available next year in this water. The same plan could well be followed whenever a local spawn supply is available. The screening of Pettit Lake and the removal of the squawfish and suckers would, however, increase the possibilities of successful planting there.

Perhaps the most essential feature of the program of fish planting in this section is the placing in effect of the recommendation of Mr. Keil to the State Game Warden for the closing of the inlets to the lakes to fishing. These are constantly being stocked, are the main spawning grounds for this section and, being generally accessible, if fishing is allowed the planted stock is caught before it has an opportunity to spawn. Since there are many other streams available for fishing as well as the main river, the highest value of the lake inlets is as nursery streams and feeders to waters lower down. The redfish may be protected by allowing grappling for them for only a portion of the waters occupied for spawning purposes, the closed areas to be marked by posters. In the Alturas inlet the redfish should be protected above the ford near the forks of Alpine Creek and at Stanley Lake at the head of the meadows. There is as yet an insufficient run of these fish in the other lakes to permit their being taken. The closing of the inlets to Alturas Lake, Pettit Lake below Alice Lake, Yellowbelly Lake below Farley Lake, Redfish Lake and Stanley Lake will provide protection to spawning fish both in spring and fall. Unless these were closed, spawning landlocked salmon and eastern brook trout could be caught. There will still remain a problem of protecting the fall spawning fish such as the landlocked salmon and eastern brook at the Champion Lakes, Toxaway Lake and lakes on the Roaring Creek drainage. These should no doubt be closed to fishing on October 1. These high basins are visited by hunters in the fall and considerable damage could be done by them to spawning fish.

Owing to the necessity of curtailing expenditures during June it was impossible to obtain weed shipments from Fish Lake as contemplated. An examination of the area planted showed two bunches of vegetation which were the result of some of the past plantings. It is hoped that this work may be undertaken next year and a test made to determine if the plants are destroyed by suckers.

Particular mention is necessary of the co-operation furnished by interested individuals. On account of the shortage of funds during late June it would have been impossible to have carried out the work except for this assistance. Mr. James McDonald, who has a lodge at Pettit Lake, furnished practically all the subsistence for the entire party, offered his lodge as a headquarters, donated his truck for the transportation of the fish, furnished a boat and gave liberally of his own time and labor in the actual distribution of the fish. Mr. B. D. Horstman, who has a hotel at Redfish Lake, furnished shelter, boat transportation and labor in the distribution of

the fish. Several other individuals assisted in caring for and transporting fish.

The interest of the State Fish Commissioner in the work and his assistance is appreciated and it is hoped that in co-operation with the Idaho State Game Department, the fish resources of this section may be developed so that not only will the local fishing be greatly improved but information obtained which will be of great benefit in developing similar resources on other National Forests.

S. B. Locke,  
Forest Examiner.

### Cooperation with Bureau of Fisheries

Arrangements have been made to detail two experienced men from the state fishery force to assist the Federal Bureau of Fisheries in their work of collecting black-spotted trout eggs in Yellowstone Park the coming summer. In return for this assistance, the Bureau agrees to consign to the state hatcheries a proportionate share of the eggs collected. It has also been suggested by Mr. Glen C. Leach, Chief of the Division of Fish Culture of the Bureau, that by a closer co-operation between the Bureau, and State in the development of new fields, and a better understanding regarding the distribution by the two agencies over the same territory, much duplication of effort will be avoided with a saving in transportation. The Department is indebted to the Bureau for the following fish eggs received the past season. 20,000 landlocked salmon eggs which were hatched at Hayspur and distributed in the Sawtooth and Payette Lakes. 150,000 black-spotted trout eggs were received at the Sand Point station and 25,000 at Hayspur from which Federal applications were filled.

### Propagation

The work accomplished at the several hatcheries operated by the Department during the season of 1924 has been highly satisfactory. While some few changes have been made in the personnel, most of the older employees have been retained, and their work both at the hatcheries and in the field has been characterized by faithfulness, enthusiasm, and a duty well performed. With the establishing of a number of new hatcheries and field stations the coming year, the problem of securing reliable, trained men for this purpose becomes a perplexing one. It is physically impossible for the Fish Commissioner to be everywhere at the same time, and for this reason he must have absolutely dependable as-

sistants in the various fields to carry out the work successfully. Following is given a report of the conditions existing at the various hatcheries, together with the improvements and propagation work that has been accomplished at each.

#### *Sand Point Hatchery*

Located as it is geographically, and supplying much of the lake country of the north, this station is one of the most important in the state. While the output for the season was well up to normal in numbers turned out, the low temperature of the water supply did not allow these to be grown to the sizes that are distributed from some of the other hatcheries. The state owns an additional spring near this station that has never been utilized, and it is the intention the coming summer to convey this water through a thousand feet of 12 inch pipe to a reservoir pond from which it may be led into numerous nursery rearing ponds on the hatchery grounds. It is hoped that by this means of exposing the water in a shallow pond before using, the temperature may be raised to a more favorable degree for rearing large fingerlings. The condition of the hatchery building and equipment is excellent, and considerable work was accomplished during the summer in repairing and putting into better shape the rearing and brood stock ponds that have not been used to any great extent the past few seasons. It is the intention also to hold a stock of cut-throat trout for breeders at this station as soon as these may be collected and transferred.

#### *Coeur D'Alene Hatchery*

The past season was a banner year at this station and over two and a half millions of eastern brook and native cut-throat trout were distributed. This hatchery is also handicapped with a water supply of too low temperature, and many other conditions that are not the most desirable for fish propagation. With a maximum temperature of about 42 degrees, the fish are best removed from this water and distributed when they have reached the one and one-half inch fingerling stage, for they do much better out in the streams and lakes than by being held in water of this temperature. The Superintendent of this station is to be congratulated on the success he has had in incubating and hatching eggs

in this water that drops almost to the freezing point and remains so throughout the hatching and much of the earlier feeding periods. Minor repairs have been made during the season on the water supply and outlet pipes and foundation walls of the building. Were it possible to find a location somewhere in this vicinity with a more desirable water supply, and where rearing ponds could be operated in connection with the station, it would be a decided advantage to everyone concerned to move this establishment, lock, stock and barrel, even though the cost be considerable and a part of a year's operations lost.

#### *Ashton Hatchery*

The output of this station was considerably below normal on account of the breaking of the reservoir dam late last winter at a time when the troughs were filled with newly hatched fry and eggs at a delicate stage of development. The new hatching building completed the fall of 1923 and located on higher ground than that occupied by the old hatchery which it replaced, necessitated the raising of the reservoir dam to create a greater head of water. This new dam was constructed on top of the old one and at a time of the year when more or less frost was in the ground. During the abnormally early thaw the first of February last year an unexpected break came in the night near the spillway between the old and new portions of the dam, and carrying everything before it drained the reservoir pond to the bottom shutting off all water from the hatching house and rearing ponds. The troughs contained 300,000 eastern brook trout fry, and approximately 1,100,000 rainbow eggs in all stages of development from freshly taken ones to those of the earlier eyed period. The rearing ponds were being used to hold the rainbow brood stock that had not yet been stripped. The troughs containing the brook trout fry had to be emptied immediately, as the water drained rapidly out of them leaving the little fish stranded on the bottom. These were turned out into the stream below the hatchery and in all probability most of them perished. The unstripped breeding fish were hurriedly turned out into the stock ponds among the ones from which the eggs had been taken. Many of the eggs in the troughs were left dry as the water drained under the flash-boards, and the packing and shipping of these had to go on throughout the night by lamp and lantern light. 230,000 were shipped

to the Federal hatchery at Salmon City, and 900,000 to the Hayspur State Hatchery. As many of these eggs were at a stage when the least shock destroys them, this handling, packing and shipping occasioned a tremendous loss, and more than 60 per cent were later picked out dead at Hayspur. A large majority of the brood fish that were turned back into the stock ponds, was just at the point of ripening, but there was no way of handling them or taking care of the eggs that might be taken until the dam was repaired and the entire lot of fish re-sorted. Several hundred thousand eggs were undoubtedly lost through over-retention. The work of repairing the dam began immediately under the direction of an engineer from the Highway Department, and with the assistance of several of the Deputy Game Wardens from that section of the state; the State Game Warden, Fish Commissioner and station force, the dam was filled in with rock and soil dug from beneath the snow. In less than a week from the time of the break, the reservoir was again raised, and the water turned back into the building and pools. The brood fish both stripped and unstripped were all mixed with thousands of yearling rainbows that were being held in the supply pond for future breeders, and these had to be seined and sorted out before spawning operations could be resumed. About 500,000 rainbow eggs were taken later from these brood fish, but with the loss of the eastern brook fry and the transferring of the bulk of the rainbow eggs to other stations, the fish that were available for distribution from this hatchery were principally native cut-throat from the Henry's Lake and Blackfoot collections. The employees of the Ashton Hatchery deserve much credit for the manner in which they handled this serious situation and for their long hours of labor under most unpleasant conditions.

Considerable repair and improvement work has been carried out at this station during the past year. The old, unsightly sheds, stables, hatchery building and other shacks, have been torn down and replaced with new ones. The grounds have been graded and cleaned up and the road from the hatchery to the highway graded and made passable during wet weather. It is hoped that the brood stock ponds can be reconstructed in such a manner that they will be under better control, and the fish handled without having to seine them from several feet of muck that now covers the bottom of these ponds.

### *Hayspur Hatchery*

This station with its ideal water supply whose temperature remains uniform throughout the year at 52 degrees, is probably the most valuable from the standpoint of rapid growth of the fish of any in the state. A small brood stock of rainbows is maintained at this hatchery, but these are held in cement rearing tanks rather than in large brood ponds, and do not furnish the quality of eggs that would be expected under other conditions. There is every opportunity at this station to develop a series of nursery rearing races in which fingerlings may be grown to a length of four or five inches before being distributed, and also for the construction of large, natural brood ponds where a sufficient number of breeding rainbow and cut-throat trout can be held to supply eggs for those stations less fortunately situated. The troughs of this hatchery during the past season were rather over-crowded with fish due to the transferring of eggs from the Ashton hatchery, and many of the eastern brook fingerlings had to be distributed at a much smaller size than desired to make room for the rainbow and Silver Creek natives. 60,000 large fingerling, chinook salmon and 20,000 ouananiche or eastern landlocked salmon were hatched, reared and distributed from this station.

### *Henry's Lake Field Station and Hatchery*

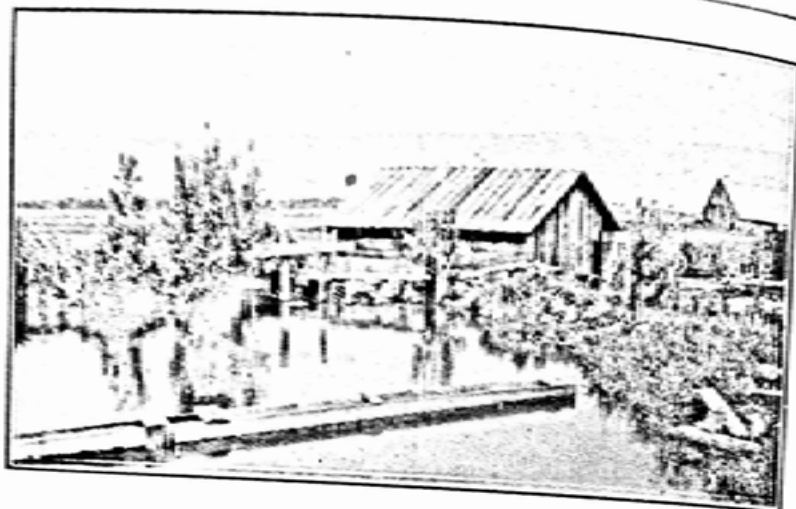
This valuable field station which is located in the extreme northeastern part of the state adjoining Yellowstone Park, was established at the beginning of 1924 season much in the nature of an experiment. While it was known that the lake and its tributaries contained great numbers of large cut-throat trout, it was more or less problematical as to the effect the raising of the water by the newly constructed dam might have on the spawning habits of these fish. In order that the equipment for handling the fish and eggs be in readiness prior to the time of operating, it became necessary to go into this section at the beginning of April. Ordinarily, railroad transportation over the Yellowstone Branch is not resumed until much later in the season, but on account of the abnormally light snow-fall during the winter of 1923-24, weekly train service to the logging camps had been established at this time. The trip from Trude station to Henry's Lake (a distance of 25 miles) was



Spawning operations at Henry's Lake, where new field station was established in 1924.

made with dog teams, and much of the work of establishing the eyeing station, placing of racks and traps in position was accomplished only through the use of dogs, skis and toboggans. Henry's Lake lies at an elevation of almost 7,000 feet, and although the weather was unusually mild for this season of the year, the improvised hatchery with its leaky flume and troughs became covered with such a sheet of ice that the best work was not possible. On account of warm springs influencing the water at the head of the lake, the fish had already congregated in great numbers at this point, and with one haul of the seine (see illustration) over two tons of cut-throat and hybrid rainbow trout were collected and impounded in retaining pond made by racking off a portion of the lake. These fish were in splendid condition, averaging almost 5 pounds, with many running up to 10 pounds. The hybrids averaged heavier in weight than either the rainbow or cut-throats of the pure type. Had we been prepared with facilities for eyeing all the eggs that could have been collected, several million could easily have been taken at this one point. The troughs and trays that were available for the purpose, could only accommodate 300,000, and these were held for a time and then transported to Ashton. With the breaking up of the ice on the lake, operations were transferred to the fish ladder at the dam where quantities of fish were descending to their old spawning grounds in the river below. Several hundred thousand additional eggs were secured at this point and taken green to Ashton, and the troughs of the field hatchery refilled to capacity for hatching and distributing locally. Four additional hatching troughs have been installed at this station; a new flume constructed to bring the water from the spring, and new racks, traps and live boxes built and stored for next season's work. The capacity of this plant will be 500,000 eyed eggs at one time, and from 300,000 to 400,000 fish hatched and reared to No. 1 fingerlings for local distribution.

The Department is much indebted to Messrs Nixon, Garner, Gaston and Endicott for their valuable assistance in carrying out last season's pioneer work, and to Mrs. Sherwood and family for permission to establish the eyeing station on their property.



Cascade field hatchery

### *Cascade Hatchery*

The establishment of a small summer field hatchery on the North Fork of the Payette near Cascade, has filled a long felt need for this part of the state. Formerly it was necessary to supply fish for this section from the Hayspur hatchery, 30 hours distant by rail. While the Department very much desired to locate a large year-round hatchery somewhere in either the Payette or Weiser River valleys, investigation disclosed no suitable springs of sufficient volume to warrant such construction, and it will be necessary to operate two smaller summer hatcheries to supply these needs. The spring on the Martin Ranch, four miles above Cascade, supplies just about sufficient water to operate the 12 hatching troughs with which the hatchery is equipped, but by hatching and rearing to No. 1½ fingerling size an early take of rainbow eggs, and then later re-filling the troughs with a late collection of cut-throat eggs, the output of this hatchery can be doubled and should furnish for distribution half a million good-sized fingerlings of the two species. The water rights and lease of necessary grounds for this station were acquired by the West Mountain Rod and Gun Club of Cascade, whose members also materially assisted in its construction. It was placed in operation too late last summer to allow of rainbows being handled, but 230,000 cut-throat eggs

were transferred from Ashton and approximately 200,000 splendid fingerlings distributed. The first of September this station was closed for the season, and the man in charge transferred to game warden duties.

### *Grangeville Hatchery*

After investigating numerous springs and spring creeks throughout Idaho, Clearwater and Nez Perce Counties, a location on John's Creek, 4½ miles south of Grangeville was selected as the only available site where conditions were suitable for establishing a hatchery in this section of the state. The Commercial Club of Grangeville having arranged for a perpetual lease of the property and water rights, construction began on the building and nursery ponds the first of October, 1924. The building is 20 by 61 feet, single story over the hatchery part, and two stories for work rooms and living quarters for the man in charge. Six 20 foot cement rearing pounds supplied with water independent of the hatching troughs, will allow the fish to be carried to a large fingerling size before being planted. This hatchery cannot be operated during the winter months, and for this reason eastern brook will not be handled. The capacity of this station will be approximately half a million with the present rearing ponds, but it is the intention to construct additional ones later. The eggs for this hatchery will be collected in the Clearwater and Lochsa sections, where eyeing stations are to be established at suitable points next spring. This station in its setting of pine trees should be one of the most attractive in the state when the grounds have been graded and cleaned up and the rearing ponds are in operation.

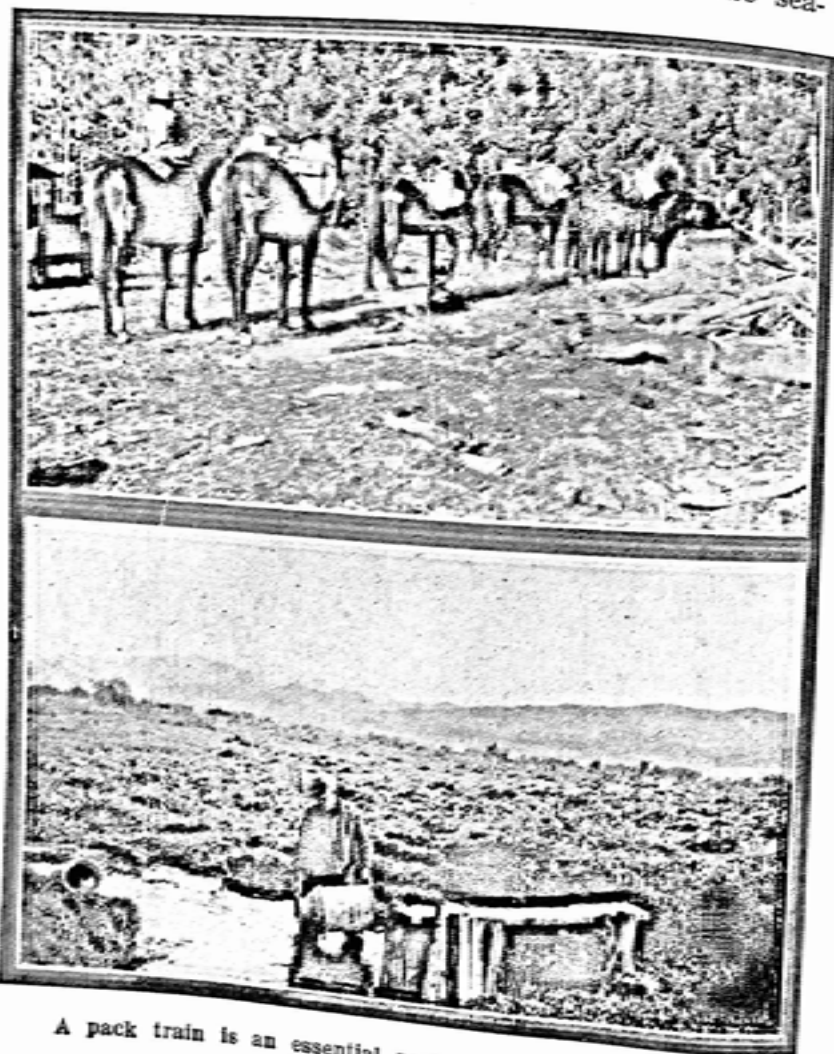
### *Mackay Field Station and Hatchery*

This station is being finished at the present time, and should be completed and in operation before this report is off the press. It will be used principally as an eyeing station for eastern brook eggs during the fall months and for rainbow eggs in the late winter and spring. Half a million rainbow eggs will be retained in the troughs for hatching, rearing and planting in local waters. This field should be developed into the most productive rainbow collecting points in the entire state.



*Distribution for Year 1924*

In the distribution of the fishes propagated at the various hatcheries, the Department tries at all times to apportion these over the immense territory in the fairest manner possible. With the limited output that has been available in the past none of the sections of the state have received the number of fish that the waters required. Instructions were given the men in charge of the distribution work at the beginning of the sea-



A pack train is an essential part of the fish distribution.

son, that under no circumstances when sending out a consignment of fish were the numbers to be padded. They were told that if there were only 500 fish in a can, to so report on the application blank. It is results that count, and not the number of fish that a report may indicate as having been turned out. Owing to low water conditions at Deer Flat reservoir, the number of yellow perch available for distribution from that point was limited to a few shipments. In the distribution work, the Department wishes to acknowledge the many courtesies extended by the railway and steamship transportation companies whose officials and employees stand ready at all time to expedite the delivery of the fish to their destinations. Below is given a list of the number and varieties of fishes distributed from the various hatcheries.

*Sand Point Hatchery*

Species	Fingerlings	Yearlings
Rainbow	1,000,000	300,000
Eastern brook	300,000	
Native cut-throat	500,000	
Yellowstone blackspotted	120,000	
Chinook salmon	60,000	
Totals	1,980,000	300,000

*Coeur d'Alene Hatchery*

Species	Fingerlings
Eastern brook (Elk River)	1,363,700
Native cut-throat (Wolf Lodge)	1,300,000
Totals	2,663,700

*Hayspur Hatchery*

Species	Fingerlings
Eastern brook	303,800
Rainbow	558,000
Native (Silver Creek)	185,000
Native (Yellowstone)	10,000
Chinook salmon	92,000
Ouananiche (landlocked salmon)	16,800
Totals	1,165,600

*Ashton Hatchery*

Species	Eggs	Fry	Fingerlings
Eastern brook		300,000	
Rainbow	230,000		440,000
Native cut-throat			369,100
Totals	230,000	300,000	809,100

*Cascade Hatchery*

Species	Fingerlings
Native cut-throat	182,000

*Henry's Lake Hatchery*

Species	Fingerlings
Native cut-throat	118,000

*Fish Salvaged from Canals, Creeks and Sloughs*

Species	Fingerlings	Yearlings	Adults
Yellow perch (Deer Flat)	91,400		
Brook trout (Bonner County)		175,000	
Rainbow (Bonner County)		125,000	
Cut-throat (Bonner County)		150,000	
Black bass (Bonner County)		150,000	
Bullheads (Grand View Canal)		2,100	
Native cut-throat (Camas res.)			515
	91,400	602,100	515

*Total Distribution of All Species for 1924*

Species	
Eastern brook trout	2,266,800
Rainbow trout	2,528,000
Native cut-throat	2,784,100
Chinook salmon	152,000
Ouananiche or landlocked salmon	16,800
Yellow perch	91,400
	7,839,100

*Investigation and Construction Work Planned for Coming Year*

Experience has shown that at the larger lake resorts where fishermen congregate in great numbers, good angling cannot be maintained under the usual methods of stocking. Payette Lake for instance, is one of the most wonderful trout and salmon waters in the state, and in spite of the fact that perch and bass have been introduced from time to time, by a readjustment of the food conditions and a judicious selection of varieties suitable for this water, angling may be built up and maintained that will make this resort famous throughout the west. Plans are being worked out for the construction of retaining ponds near this water, where landlocked salmon and steelhead trout may be held and grown to the yearling sizes before being planted in the lake. At Priest lake in the northern part of the state, similar work is contemplated. A consignment of 100,000 Mackinaw trout eggs are to be shipped from Lake Superior this spring, and will be hatched and reared to five and six inch fingerlings before planting in Coeur d'Alene and Pend d'Oreille lakes. An exchange has been made with the New Hampshire Fish and Game Commission whereby the Idaho Department is to receive eggs of the far famed Sunapee saibling or golden trout. It is believed that this dainty charr will take kindly to some of the Alpine-like lakes of the Sawtooth country that are vacant of fish life at present. While the ouananche (wan'-an-ish) or eastern landlocked salmon has become fairly well established in several of the Sawtooth lakes, and investigation has shown that these fish will reproduce in these waters, collections of the eggs in this region is almost out of the question on account of heavy snow-fall closing off transportation at the time these salmon are spawning. The Bureau of Fisheries has promised that if the collections in Maine so warrant, a consignment of 25,000 of these eggs will be supplied the Department, from which it is hoped a brood stock may be reared. Investigation is being made this winter of several places where it is proposed to collect the eggs of the steelhead trout for stocking landlocked lakes throughout the state. Plans are also being worked out for the utilization of sloughs along the Snake River in the cultivation of large-mouth black bass. Unfavorable weather and water conditions so frequently interfere with the collection of eggs from wild fish, that it



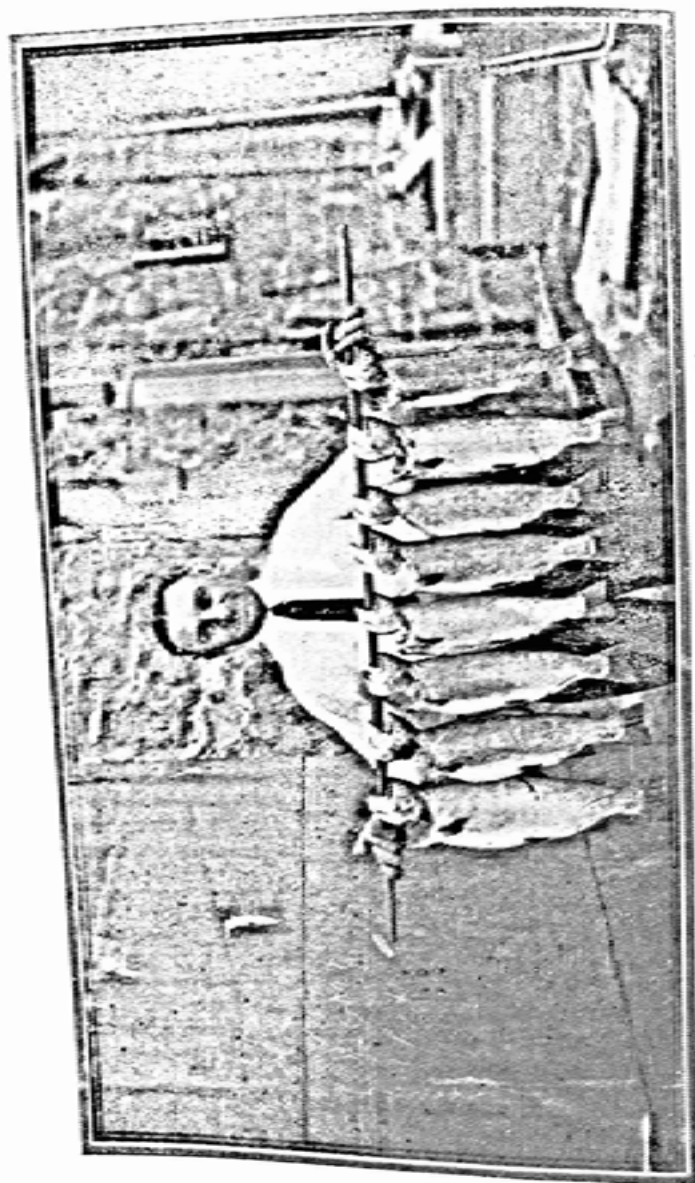
A few cut-throat trout from the Middle Fork of the Salmon.

becomes almost a necessity that a large brood stock station be established somewhere for supplying eggs of the eastern brook, rainbow and cut-throat trout, to any or all of the hatcheries when a shortage occurs. It is believed that at the Springfield lakes or near American Falls or Burley such a station may be developed in the near future. Such an establishment requires spring water of suitable temperature and tremendous volume, and the topography of the location must be such that numbers of controllable ponds of various sizes and depths may be constructed.

Idaho is rich in the number and varieties of her fishes, and especially so, in the numerous intermediate forms of the rainbow and cut-throat series. There is so much confusion among anglers regarding the proper classification of these trout, that the Department is preparing a bulletin descriptive of all the fishes of the state, which will be illustrated with photographs and cuts showing the various colorations and markings under different environments.

#### *General Comments, Suggestions and Recommendations*

From both the sportsmen's and fish culturist's standpoint, the past season has been an unusually disastrous one as regards the fish life of Idaho. Hundreds of streams throughout the state either became entirely dry, or so nearly so, that a serious loss of fish occurred. In many instances, these were the smaller brooks or creeks tributary to the popular fishing streams, and are in reality the life blood or nursery feeders upon which these waters depend for their supply of fish. The demands of irrigation drew so heavily on most of the half-filled reservoirs, that in several of these nothing much remained except the accumulated silt of the bottom in which thousands of fish smothered with no possibility of rescue. The effects of this serious drouth on the fishing, will be noticeable for a number of years to come, even though the Department put forth herculean efforts to repair the damage; but it is hoped that by materially increasing the numbers of fish planted, and by giving them the protection afforded by closing the headwaters and smaller tributaries, this condition may be overcome more quickly. Deforestation; pollution from mines and lumbering industries; loss of thousands of young and adult fish in the larger irrigation canals, together with the inroads made by an ever increasing number of angl-



A few hours catch of native cut-throats in the Big Springs section—Upper Snake River.

ers who not infrequently exceed the limit, all are contributing factors towards the rapid depletion of fish life. If not only the sportsmen, but the people generally throughout the state could be made to see more clearly the priceless asset they have in the forests, fish and game, it would hasten the day when every man, woman and child who love the great outdoors will be in themselves zealous guardians of these wild life treasures. While altogether too many of our lakes and streams have been rendered unfit for fish life through deforestation, pollution, etc., there are still many thousands remaining in good condition and which can be made to furnish splendid angling for double the number of fishermen we have to-day. The majority of those waters that are now depleted of organic life through industrial wastes and other ravages of civilization, may be resuscitated and eventually built up to a high state of productiveness.

Not only in Idaho, but in every state in the Union, the failure of the fish and game departments in not securing better results from their fishery work, has not been due to a lack of propagation or distribution of fish from the hatcheries, but through the absolutely idiotic methods of planting that the lack of funds has made necessary. All intelligent students of fishery work agree, that the proper planting of the fish after they have been reared is one of the most important parts of the entire undertaking; yet under the past and present methods of distribution, the Department must consider their part of the work finished when they have safely delivered the fish to the nearest railroad station. Men with years of training and infinite patience have selected the breeding fish; collected the eggs and watched over them with a mother's care through long weeks of incubation and hatching period; taught them to feed, and spent many anxious days and nights guarding them against the innumerable dangers that none but fish culturists can realize. When they have reached the proper age or size for distribution, other equally well-trained men take them in hand and through long hours of constant attention deliver them to the applicant for planting. Fish that have been handled at considerable expense through every stage of their development by men trained to their every requirement, are usually turned over to persons absolutely lacking in essential knowledge to carry out one of the most vital parts of the work. However enthusiastic the applicant may have been at the time he applied

for the fish, he usually becomes indifferent by the time the consignment arrives, and in many instances has delegated some friend to meet the train and put out the fish. This friend, if he is on time at all, hurries the fish to the most convenient spot on the water to be stocked and dumps them in. Hundreds of millions of public fish have been planted under just such conditions and the wonder is that there is any fishing left at all. What would you think of a farmer who expected to raise a good crop of potatoes, if he took a load of selected seed, drove to one corner of his field and dumped them all in one pile on top of the ground? Would he be expected to get results, even if he planted his seeds intelligently, did he not use a little common sense in selecting and preparing his soil beforehand? Just as the agriculturist must know that his soil and his seed and his methods of planting are suited one to another, so must he who expects results from the planting of fish, understand the great fundamental principles governing this branch of work and of its proper application to the waters in question. Because a certain kind or size of fish, planted in a certain place has done well in that water, is no reason why good results may be expected in another or even in the same water from subsequent stockings.

Every lake and stream is entirely different in its characteristics, and each must be treated in an individual manner. Limnological studies have shown conclusively, that even in the same waters conditions are seldom constant from season to season, and that methods that have proven successful this year may have to be readjusted to meet these changes the following year. Your Commissioner has long advocated the advisability of every state having a thorough biological and fish cultural survey made of their entire inland water systems. Every lake, pond and stream within the state should be so investigated, classified and charted, that when an application comes in to the Department's office, they would be able to instantly look up the exact existing conditions of that particular water, and then feel reasonably certain that no mistake was being made in either granting or refusing to fill the application. If the waters were unsuitable for the species desired, then data would be available showing just what other varieties might be advantageously introduced.

This will take time, but it is hoped that a start may be made along these lines the coming season. It is also proposed that retaining stations be established in vari-

ous parts of the state. A retaining station is a number of concrete or wooden pools supplied with cold, running water, and located accessible to the routes of transportation. Into these pools the shipments of fish that have been consigned to that district are transferred immediately upon their arrival by rail or motor truck from the hatcheries. Instead of having to hurry with these fish to the waters to be stocked, and putting them out regardless of whether the waters are in condition to receive them, the entire shipment or several shipments may be held temporarily in these retaining pools, and a few taken at a time and carefully planted in such places as has previously been selected as being the most suitable for their introduction. At certain places where it has been found that better results will be secured by planting only the largest fingerlings, a shipment of these may be held and fed for several months at these stations and distributed when a length of six to eight inches. This work is best carried out in co-operation with the various fish and game associations, and the man who is placed in actual charge of the feeding and distributing, should be selected for his interest in this work and for his familiarity with the various lakes and streams of his section. Idaho has one of the greatest fields for the development of fish cultural work in the United States, and it is the intention of the present Department of Fish and Game to do everything within their power to build up this branch of the work to the highest possible state of efficiency.

In conclusion, your Commissioner wishes to say that in his extended travels over the state, he has met with none but the most cordial spirit of co-operation; not only from individuals sportsmen and fish and game associations, but from town, county and state officials, corporations and transportation companies whose interests are in a way correlated. To these, and to his fellow workers in the Department of Fish and Game, he wishes to express his sincere thanks for the wholehearted assistance they have given him in the performance of his duty.

Respectfully submitted,

W. M. Keil

### Fish Screens and Fishways

During the past two years five fishways have been finished, one of which was a concrete structure. An agreement was also entered into with the owners of the flood waters of Payette Lake whereby they are to build a satisfactory fishway each season when putting in the flash boards to hold back the flood waters and to keep this fishway in repair until the flashboards are removed at the end of the irrigation season.

In connection with this case it was noticed that while considerable numbers of whitefish went over the fishway by far the greater number were suckers and squaw fish. It was also noted that the first fish to go over the ladder were the whitefish and it is here suggested that during the coming season the ladder be closed as soon as the whitefish have entered the lake and the suckers and squaw fish held below the dam be destroyed.

A detailed report on conditions existing at Goose Lake has been submitted and will not be discussed here.

A number of ditches and canals were screened or raked. A rack was also installed in Dempsey Creek to prevent native trout from ascending the creek during the spawning season and getting stranded before they could return to the Portneuf River.

Only in the canals and ditches causing the heaviest loss were the owners compelled to provide screens, but a survey of nearly all ditches in the state south of Salmon River was made to determine which ones were causing the heaviest loss. In some instances losses were reported which upon investigation could not be verified and, of course, in cases of this kind, no action was taken to compel the owners to screen the ditches at this time.

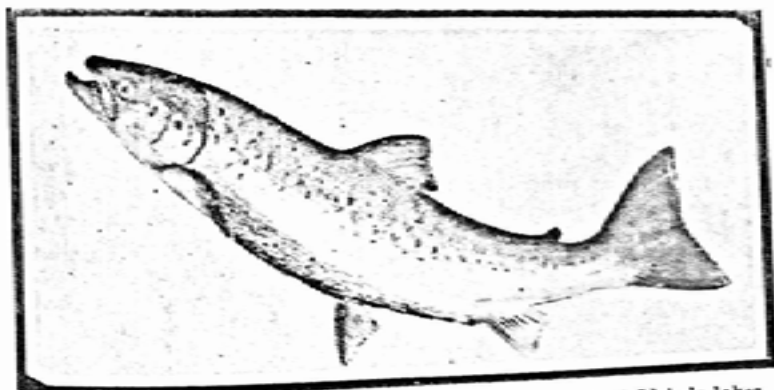
Much valuable data has been secured during the past two years regarding the habits of fish in the various streams and also as to the need of screens and fishways all of which will be of great assistance in future work.

The greatest difficulty in enforcing the screen law is the fact that there is no screen, so far invented, that will clear itself of trash, that is, it will require attention every once in a while, and that in nearly all cases where a small or individual ditch is concerned there is no ditch rider or water master to make daily trips to the head of the ditch and thus see that the screen is kept clear. The small owner cannot afford to take the time neces-

sary to make a trip, which is often for several miles, for the sole purpose of cleaning a screen which has cost him considerable money to install and which as far as he can see is of no special benefit to him. The consequence is that after having his water shut off a time or two, he will pull the screen and take a chance that no evil effects will follow such action.

It is suggested that Section 2755 be amended so that the Game Department can bear at least the expense of installing the screen in the ditch in a workmanlike manner and that the only expense to the owner would be the cost of the material and the maintenance of the screen.

John A. Pearson



The leaping ouananiche—now established in several of Idaho's lakes.

### FINANCIAL

Coincident with the end of a biennium, there are always numerous changes in the statutes suggested, some constructive, others decidedly the reverse. Unless immediately connected, no one could possibly appreciate the many and diversified views of our constituents as to the proper method of operating the Department. For various reasons, there are a few who would seek its abolishment. Some recommend that the revenue revert to the Road and School Funds in each county and that law enforcement be vested in the hands of the various sheriffs. There are those who desire a change in government only—that of a commission of five, to be appointed by the Governor. Then, again, the county game commission is suggested, with not less than three commissioners in each and every county in the state. Others are opposed to a commission but suggest that the Department be turned over to a non-political organization and, finally, come those who would place the Game Department on an appropriation basis, all revenue to revert to the General Fund. It is hoped this last backward step will never be taken.

#### *Dissimilarity of Views*

Regardless of how sportsmen may differ individually as to the form of government, they are practically united in feeling that their money is contributed for a certain specific purpose, and no other, and they realize, also, that no legislature would appropriate sufficient for our needs. Forgetting the revenue to be derived from the sale of licenses and through other sources, legislatures would have in mind only the direct tax on the people and limit appropriations and expenditures accordingly. Our main stock in trade at present is that the Department costs the taxpayer exactly nothing.

#### *Legislation and Its Effect*

As a further illustration of the dissimilarity of views, take the much-abused Chinese pheasant. According to some local authorities, the open season in Ada, Canyon and adjoining counties should be limited to fifteen days, with a larger bag limit than at present. Another idea advanced is that the shooting of these birds be confined to twice a week, say Wednesdays and Sundays only. Still from another source comes the

suggestion that there be a thirty-day season, as follows: One week of open season, one week closed and then two weeks open season to cover the thirty-day period. Another prominent man recommends that cocks only be killed and, last but not least, comes the man who states (if he has been correctly quoted in the papers) that, instead of having a fifteen-day open season in Ada and Canyon Counties, there should be an open season of 365 days. These are a few ideas that have been broached on two subjects only. Admitting the sincerity of these men, it will serve to show just what a conglomerated mess you would have if their views were all embodied in the statutes, and should indicate, also, how seriously the revenue of the Department can be affected by ill-advised or adverse legislation.

#### *Revenue*

Dependent upon license sales and receipts from other sources, our revenue naturally fluctuates. The biennium of 1919-20 produced a revenue of \$270,722.51. The receipts of 1921-22 were \$322,385.20, this gain being occasioned, to a large extent, by an increase in resident and other license fees. Although the revenue of 1924 exceeded that of the year 1923 by \$4,856.78, the total receipts for the biennium were \$7,664.16 less than the years 1921-22. Here is a concrete illustration of just what ill-advised legislation can do. Handicapped to a certain extent by adverse legislation, it was conceded at the beginning of the biennium that the revenue of the Department would be more or less affected. The requirement that women procure licenses for fishing was abrogated. The age at which children must take out a license was raised from twelve to fourteen years. The open season on fur-bearing animals, marten, fox and fisher, was (inadvertently or otherwise) omitted from the last Fish and Game Bill. The taking of mink, raccoon and otter was confined entirely to the extreme northern counties. Certain other ambiguities or errors in connection with this bill (particularly in omitting to provide for an open season on Hungarian partridges, the principal North Idaho game bird) were bound to result in a deficiency in revenue. To make a long story short, however, the difference in the number of trapper's licenses sold of the series of 1923-24 would practically absorb the difference in the revenue, without taking into account the revenue from licenses which ordinarily

would be purchased by women, or the other matters referred to.

Other revenue of the Department consisted of receipts from confiscations, fines, etc. There were 594 arrests made during the biennium, resulting in the collection of 446 fines or \$12,322.00 in revenue. As a matter of information, we are including a tabulation of all arrests made by the Department, showing the name of the violator, nature of the violation, court decision and the amount of fine imposed.

#### *Comparison with Other Years*

There has not been a wide dissimilarity in the total number of licenses sold during the past four years. In 1921, there were 76,955 licenses of all classes reported sold. 1922 showed a total of 77,065. In 1923, there were 73,424 and during the twelve calendar months of 1924 there were reported sold 76,868 licenses, or a total of 150,292 for the biennium of 1923-24 as against 154,020 for the previous biennium. Were it not for the reasons outlined above, we would have shown an increase over 1921-22 instead of a slight deficit.

An itemized statement of the receipts of the Department from all sources is found elsewhere in this report.

#### *Licenses Charged to Department*

While involving a large amount of labor and time, it does not appear that our accounting system or the manner in which licenses are handled and sold can be very much improved upon. During the past six years, the Game Department has been charged with and held responsible for \$2,361,798.65 in fish and game licenses and permits, which we are obliged by law to distribute in every village and hamlet throughout the entire state. It is required that, annually, not later than the 31st day of March in each year, we shall settle such license account in full, either by money representing the actual sale of these licenses or the return of the unsold licenses to the State Auditor. The placing of these licenses in the field is safeguarded so far as it is possible. There have been, however, a few instances—unavoidable—where certain licenses have been lost or destroyed by fire. During the bienniums of 1919-20 and 1921-22, these small items were taken care of by presentation of claims, accompanied by

affidavits of fact, which were subsequently presented to the legislature in the form of relief bills, and favorably acted upon. Thus, the license accounts of 1919, 1920 and 1921 were settled in full. Similar small losses have been occasioned in 1922-23, which do not involve any large amount of money, are protected by bonds, and will probably be taken care of in a similar manner. It should be noted that these licenses are taken from under the control of the State Fish and Game Warden, who, at the same time, is held personally responsible for their return. The license year expires on the 31st day of March of each year, yet, under the present law, the State Game Warden's term of office expires on the 1st day of January. Should a change of administration occur on the 1st day of January of this or any other biennium, the outgoing Game Warden could be held responsible for licenses involving from a hundred to a hundred and fifty thousand dollars, which are all properly accounted for and represented by ledger balances of his field force, but impossible to collect, owing to inaccessibility of the territory wherein they are placed, until the breaking up of winter or on or about the 31st day of March. It is suggested that the State Game Warden's term be changed to expire on the 31st day of March, the end of the license year, instead of the 1st day of January, and, also, that provision be made to relieve the Warden from responsibility for licenses lost or destroyed by vendors in whose care they have here been placed for sale, when proper affidavits of such loss are forthcoming.

A transcript of our license accounts for various years is included under exhibits A, B, etc.

#### *Disbursements*

Effort has been made to conduct the financial affairs of the Department strictly along business lines. While maintaining practically the same field force and being called upon, also, to expend large sums of money in extraordinary improvements, we have, by careful inspection of claims and the practice of rigid economy, been successful in reducing the expenditures for the biennium by \$18,031.43. Embodied in this report is shown the total warrant issue for the years 1923-24 by months, together with a complete classification of such disbursements, under various headings. The largest item of expenditure is, of course, for personal service, which item includes salaries of all employes, field and otherwise,



and extra labor. The maintenance of our fish hatcheries, which amounted to \$44,204.41, is another large item, this being the entire operating expense for the biennium. Permanent improvements, including the building of field stations and additional hatcheries, amounted to \$20,026.86. Game birds were purchased at a cost of \$3,514.25. The outgo for spawn taking and fish distribution was approximately \$9,700.00. This, however, would not represent the actual expense incurred for these purposes by reason of the fact that, at times, almost all of our entire field force devote a part of their services to this line of work, consequently a certain percentage of their salaries could properly be charged to fish distribution and spawn taking. The same would apply to our predatory animal campaign, which has cost the Department approximately \$21,000.00. Several of our regular men, who, while performing other duties, are retained as members of the field force for this particular purpose, are paid out of the Predatory Animal Fund. Others are employed temporarily, either on a full or part time basis, for predatory animal work only. These salaries, also, are chargeable to the Predatory Animal Fund. Office supplies and printing is also quite an item, amounting to \$6,237.61. The mileage of assistant chief and deputy game wardens is a considerable amount, during the biennium this being \$35,974.85. At the close of the year 1922, the Department was more or less criticised on account of what appeared to be instances of excessive mileage and expense accounts of deputy game wardens. All claims of this nature have been carefully inspected and kept to the minimum. A considerable reduction in the item referred to has resulted. As heretofore stated, all expenditures are fully itemized and classified for the information of our constituents.

## STATEMENT OF OPERATIONS IN GAME FUND, 1923

Balance on hand, January 1, 1923 .....	\$ 52,340.63	Total warrant issue in 1923 .....	\$154,413.76
Reserve for 1922 accounts payable \$13,602.75		1922 accounts paid .....	\$ 13,602.75
Unencumbered balance, January 1, 1923 .....	38,737.88	1923 accounts paid .....	140,811.01
Total revenue apportionment for year ending December 31, 1923 .....	143,672.13	Balance on hand, December 31, 1923 .....	41,599.00
			\$196,012.76

## STATEMENT OF OPERATIONS IN GAME PREDATORY FUND, 1923

Total revenue apportionment for year ending December 31, 1923 .....	\$ 16,260.00	Total warrant issue in 1923 .....	\$ 2,283.30
	\$ 16,260.00	Balance on hand, December 31, 1923 .....	12,976.70
			\$ 16,260.00

## FISH AND GAME WARDEN

137

## GAME DEPARTMENT

January 1, 1923 to December 31, 1923

Receipts		
By balance in fund Jan. 1 1923.....		
By sale of resident fish and game licenses .....	\$116,924.40	\$52,340.63
By sale of non-resident fish and game licenses .....	2,327.50	
By sale of non-resident bird licenses .....	3,923.50	
By sale of non-resident fish licenses .....	13,489.30	
By sale of alien game licenses .....	95.00	
By sale of alien fish licenses .....	579.50	
By sale of alien gun licenses .....	351.50	
By sale of resident trappers licenses .....	7,348.25	
By sale of non-resident trappers licenses .....	118.75	
By sale of re-shipping permits .....	321.60	
By sale of selling and shipping permits .....	200.00	
By sale of private pond permits .....	60.00	
By sale of taxidermist licenses .....	270.00	
		\$146,009.20
By 217 fines .....	\$6,199.75	
By 93 confiscations .....	871.70	
By sale of beaver hides .....	4,363.56	
By sale of fish .....	750.15	
By sale of property .....	253.60	
By sale of pelts .....	25.00	
By court costs .....	21.35	
By refunds .....	2.70	
By commission saved .....	87.55	
By court judgment .....	1,290.50	
By interest .....	57.17	\$ 13,922.93
		169,932.13
		\$212,272.76

## WARRANT ISSUE 1923

To January warrants for December claims.....	\$ 13,602.75
To February warrants for January claims.....	16,061.80
To March warrants for February claims .....	17,463.00
To April warrants for March claims.....	11,247.84
To May warrants for April claims.....	8,449.87
To June warrants for May claims.....	11,992.33
To July warrants for June claims.....	10,821.62
To August warrants for July claims.....	11,588.15
To September warrants for August claims.....	11,741.56
To October warrants for September claims.....	17,558.41
To November warrants for October claims.....	13,242.62
To December warrants for November claims.....	13,927.11

\$157,697.06

## RECONCILIATION

Total receipts plus balance	\$212,572.76
Total disbursements	157,657.46
By balance in all funds January 1, 1924	\$54,915.26

## CLASSIFICATION OF DISBURSEMENTS

## A. PERSONAL SERVICES

## General

## Fish and Game

## Year 1922

A1	Salaries of regular officers and employees	\$79,521.34
A2	Salaries of extra help	542.96
A3	Taxidermist services	4.00
	Total of personal services	\$79,568.30

## B. SERVICES OTHER THAN PERSONAL

B1	Transportation of persons	\$14,422.49
	1. By railway	1,147.49
	(a) Fare	
	2. By highway	17,254.25
	(a) Fare	251.24
	(b) Allowance	16,999.91
	3. By water	24.25
	(a) Fare	24.25
	4. Local transportation (hike)	2.00
	5. Incidental (hike)	12.50
B2	Transportation of things	2,241.29
	1. Express	46.00
	2. Freight	724.15
	3. Freight	141.00
	4. Freight on packages	420.00
B3	Board and lodging	2,094.62
B4	Maintenance of animals and care of same	200.00
	1. Feeding game birds, etc.	201.34
	2. Storage of same	218.20
B5	Communication services	2,804.20
	1. Telegram	252.00
	2. Telephone	224.00
	(a) Rental	92.50
	(b) Toll	131.50
	3. Postage	454.20
	4. Messenger	5.00
B6	Printing, binding, engraving and	
	binding	5.00

\$2,302.20

## FISH AND GAME WARDEN

139

1.	Printing	
2.	Typing	1,295.20
3.	Photographs and maps	142.50
4.	Advertising	27.52
5.	Proclamations and announcements	214.32
6.	Special and misc. services other than personal	1,147.20
	1. Repairing equipment	1,054.12
	2. Storage on birds	1.25
	3. Court and public fees	3.75
	4. Bounty on Magpie heads and eggs	122.00
	Total for services other than personal	124,297.14

## C. MATERIALS

C2	Metals and metal produce	5.77
C3	Lumber	24.00
C4	Fiber products	14.11
C5	Fabrics and painters' materials	2.42
	Total for materials	\$ 46.30

## D. SUPPLIES

D1	Stationery, educational and scientific supplies	263.62
	1. Office	179.87
	2. Scientific supplies	127.00
	3. Educational supplies	4.00
	4. Newspapers	12.75
D2	Fuel	1,040.35
	1. Solid fuel	1.00
	2. Liquid fuel (gasoline)	1,039.35
D3	Mechanics', engineers', and electricians' supplies	1,254.73
	1. Oil	1.00
	2. Polishing and abrading supplies	67.74
	3. Electricians' supplies	1,084.20
	4. Mechanics' supplies	1.20
D4	Brooms and brushes	100.25
D5	Forage and supplies for animals	124.25
	1. Hay	
D6	Household supplies	12.05
	1. Water and tea	1.00
	2. Other household supplies	20.00
	3. Empty game warden balgon	1.00
	4. Packing mosquito netting	100.25
	5. Miscellaneous food for deer	
	Total for supplies	\$ 1,120.47

## E. EQUIPMENT

Reg. No.	Date	Item		
E21		Production and construction equipment.....	\$	22.34
	1252	9- 7-23 ½ doz traps .....	22.34	
E25		Food preparing equipment .....		13.10
	144	9- 7-23 22 joints stove pipe.....	4.40	
	1450	10-13-23 1 camp stove .....	3.60	
		1 camp stove and pipe .....	5.10	
E32		Road Vehicle .....		850.00
	1610	5-14-23 1 23-6-45 Buick touring car Frame No. 1017147, motor number 1039591 .....	\$1,418.00	
		Allowance on K-6-45 Buick touring car, frame No. 639012 .....	568.00	
E35		Transporting and conveying equipment .....		5.50
	1465	10-27-23 Milk can .....		5.50
E45		Kitchen, dining room and household utensils .....		.65
	1628	12- 2-23 Pans .....		.65
E48		Office equipment .....		21.75
	107	12-20-23 3 steel transfer cases.....		21.75
E49		Equipment for conveniences and comfort:		
	144	9- 7-22 18x10 Wall tent .....		15.55
E52		Produce-yielding animals:		2,984.50
	139	12-24-22 11 Chinese pheasants at \$1 .....		11.00
	140	12-24-22 4 Chinese pheasants at \$1 .....		4.00
	141	12-12-22 8 Pr. Chinese pheasants at \$4 .....		32.00
	142	1- 2-23 16 Chinese pheasants at \$2 .....		32.00
	224	9-23-23 115½ Pr. Hungarian Partridges at \$7.50 per pair .....		866.25
	246	1 - 1-23 1 Pr. Chinese pheasants .....		2.00
	299	1-12-23 36 Pr. Hungarian partridges at \$7.50 per pr. ....		270.00

## FISH AND GAME WARDEN

141

430	2-16-23	17½ Pair Hungarian partridges at \$7.50 per pair .....	131.25
431	2- 8-23	200 Pr. Hungarian partridges at \$7.50 per pr. ....	1,500.00
779	5-15-23	9 Chinese pheasants at \$2 .....	18.00
1021	8- 9-23	5 Chinese pheasants at \$ .75 .....	3.75
1022	8- 9-23	7 Chinese pheasants at \$ .75 .....	5.25
1023	7-25-23	17 Chinese pheasants at \$ .75 .....	12.75
1024	7-25-23	11 Chinese Pheasants at \$ .75 .....	8.25
1023	8-16-23	1 Chinese pheasant \$1 .....	1.00
1156	8- 9-23	1 Pr. Chinese pheasants at \$1.50 .....	1.50
1164	9- 6-23	5 Chinese pheasants at \$ .75 .....	3.75
1165	8-25-23	5 Chinese pheasants at \$ .75 .....	3.75
1305	9-24-23	6 Pr. Chinese pheasants at \$4 .....	24.00
1445	10- 6-23	8 Pr. Chinese pheasants at \$4.00 .....	32.00
1622	12- 5-23	16 Chinese Pheasants.....	22.00
E974		Hatchery equipment: .....	3.30
	818	6-17-23 1 Thermometer .....	.85
	812	6- 2-23 1 Ice pick .....	.25
	913	7-21-23 4 Bulbs and glass tubing .....	2.20
		Total for Equipment .....	\$ 3,915.69
		<b>H. FUNDS</b> .....	736.64
H5		Refunds .....	736.64
		2. Refund or licenses .....	
		Total for refunds .....	\$ 736.64
		<b>J. FIXED CHARGES</b> .....	139.45
J1		Rents .....	111.70
		2. Rent on garage .....	21.75
		3. Rent on equipment .....	
		Total for Rents .....	\$ 636.28
J5		Insurance .....	84.60
		1. Fire Insurance .....	514.18
		3. Premium on bonds .....	21.50
		6. Insurance on car .....	
J64		Membership in the Western A. Game Commission .....	25.00
		Total for fixed charges .....	790.73

## RECAPITULATION

A	Personal services	
B	Services other than personal	\$ 79,509.94
C	Material	30,307.16
D	Supplies	46.39
E	Equipment	3,230.07
H	Refunds	3,916.69
J	Fixed charges	736.64
		790.73
Total Expenditures for the year 1923		\$118,537.62

## CLASSIFICATION OF DISBURSEMENTS

Ashton Hatchery  
Year 1923

## A. PERSONAL SERVICES

A1	Salaries of regular officers and employes	\$ 3,376.67
A3	Services of extra help	271.65
A6	Special services	17.00
Total for Personal Services		\$ 3,665.32

## B. SERVICES OTHER THAN PERSONAL

B1	Transportation of persons	\$ 32.38
	1. By railway	\$ 26.11
	(a) Fares	\$ 26.11
	2. By highways	6.27
	(a) Fares	6.27
B2	Transportation of things	267.76
	1. Freight	26.38
	2. Express	238.88
	3. Drayage	2.50
B3	Board and lodging	48.55
B5	Communication services	81.81
	1. Telegraph	
	4. Telephone	\$ 7.39
	(a) Rental	64.00
	(b) Tolls	\$ 27.00
	6. Postage	37.00
B9	Special and miscellaneous services other than personal	10.42
	1. Repairing equipment	
Total for Services other than Personal		\$ 77.35

## C. MATERIALS

C2	Metals and metal products	\$ 507.85
C4	Lumber	
C5	Fiber products	\$ 92.33
		21.10
		2.39

## FISH AND GAME WARDEN

143

C6	Paints and painters materials	46.32
Total for Materials		\$ 162.14

## D. SUPPLIES

D1	Stationery, educational and scientific supplies	\$ 2.75
	1. Office	\$ 1.00
D2	Fuel	249.20
	3. Scientific supplies	1.75
	1. Coal and wood	\$ 115.18
	2. Gasoline	134.02
D3	Mechanics', engineers', and electricians' supplies	35.55
	1. Oil	\$ 16.90
	5. Electricians' supplies	11.60
	9. Mechanics' supplies	7.05
D48	Brooms and brushes	6.50
D6	Forage and supplies for animals	1,561.38
	1. Hay	96.00
	9. Fish food	1,465.38
D8	Explosives	26.05
D9	Miscellaneous supplies	12.70
	2. Water and ice	\$ 2.25
	3. Other household supplies	1.70
	8. Packing receptacles (sacks)	8.00
	9. Miscellaneous	.75
Total for Supplies		\$ 1,894.13

## E. EQUIPMENT

E21	Production and construction equipment	\$ 9.05
	Reg. No. Date Item	
	1130 8-13-23 1 Shovel	\$ 2.00
	1270 9- 1-23 1 Scoop shovel	2.40
	1568 11-20-23 1 Axe	2.40
	1568 11-20-23 1 Fork	1.50
	1571 11- 7-23 1 Pick handle	.75
E24	Timber working equipment	2.90
	Reg. No. Date Item	
	637 4-26-23 1 Steel square	\$ 2.75
	749 5-24-23 1 Hatchet handle	.15
E25	Food preparing equipment	3.40
	Reg. No. Date Item	
	403 2-10-23 9 Jts. stove pipe, 2-6-in. elbows	\$ 3.40
E38	Transporting and conveying equipment	65.00
	Reg. No. Date Item	
	1274 4-15-23 1 Set work harness	\$ 65.00

E45	Kitchen, dining room and household utensils			\$	-30
	Reg. No.	Date	Item		
	604	4-12-23	1 Egg beater	\$	.30
E49	Equipment for convenience and comfort				6.00
	Reg. No.	Date	Item		
	120	6-21-23	1-12x12 Tarp	\$	6.00
E81	Live Stock				60.00
	Reg. No.	Date	Item		
	1274	4-15-23	2 Horses	\$	60.00
E974	Hatchery equipment				72.60
	Reg. No.	Date	Item		
	639	3-29-23	5 Gallon pails	\$	5.00
	1568	10-31-23	Parts for food chopper		7.60
	Total for Equipment			\$	159.25

## F. STRUCTURES

F9	Miscellaneous			\$	5,657.62
	Last payment on hatchery			\$	1,250.00
	80% of payment on hatchery building				4,000.00
	Flooring for hatchery				407.62
F2	Excavations, embankments and surfacing				757.80
	I. Sewers, water mains, subways, etc.				757.80
F41	Building dam				1,323.35
F75	Fences				310.50
	Total for Structures			\$	8,049.27

## RECAPITULATION

A	Personal services	
B	Services other than personal	\$ 3,665.32
C	Materials	507.85
D	Supplies	162.14
E	Equipment	1,894.13
F	Structures	159.25
	Total Expenditures for the Year 1923	\$ 14,437.96

## CLASSIFICATION OF DISBURSEMENTS

Hay Spur Hatchery  
Year 1923

## A. PERSONAL SERVICES

A1	Salaries of regular officers and employes	\$ 2,314.15
A3	Services of extra help	29.50
	Total for Personal services	\$ 2,343.65

## B. SERVICES OTHER THAN PERSONAL

B2	Transportation of things	\$	589.30
	1. Freight	\$	442.83
	2. Express		128.47
	3. Drayage		18.00
B3	Board and lodging		39.30
B4	Subsistence of animals and care of autos		2.30
	1. Hay and grain		2.30
B5	Communication services		72.48
	4. Telephone		71.60
	(a) Rentals	\$24.00	
	(b) Tolls	47.60	
	6. Postage		.88
B7	Advertising		9.45
	5. Proclamations and announcements		9.45
B9	Special and miscellaneous services other than personal		49.60
	1. Repairing equipment		49.60
	Total for services other than personal	\$	762.33

## C. MATERIALS

C2	Metals and metal products	\$	189.50
C4	Lumber		237.14
C6	Paints and painters' materials		43.15
	Total for materials	\$	469.79

## D. SUPPLIES

D13	Scientific supplies	\$	2.75
D2	Fuel		279.91
	1. Wood and coal	\$	140.33
	2. Gasoline		139.58
D3	Mechanics', engineers', and electricians' supplies	\$	102.05
	1. Oil		36.85
	5. Electricians' supplies		13.00
	9. Mechanics' supplies		52.20
D48	Brooms and brushes		3.65
D5	Wearing apparel		33.70
	1. Outing garments (wading pants)		974.19
D69	Fish food		2.90
D8	Explosives		79.05
D9	Miscellaneous supplies		77.80
	2. Water and ice		1.25
	8. Packing receptacles (sacks)		
	Total for supplies	\$	1,478.20

## E. EQUIPMENT

E12	Lighting equipment			\$	2.00
	Reg. No.	Date	Item		
	125	6-21-22	1 Gasoline lantern		2.00
E21	Production and construction equipment				1.75
	Reg. No.	Date	Item		
	1281	8-25-23	1 Axe handle		.65
	1584	9-1-23	1 Screw driver		.40
	1584	9-7-23	2 Files		.70
E45	Kitchen, dining room and household utensils				.50
	Reg. No.	Date	Item		
	1281	4-11-23	1 Wash basin		.50
E49	Equipment for covering and comfort				6.00
	Reg. No.	Date	Item		
	125	6-21-23	1-12x12 Tarp		6.00
E973	Fish seines				6.30
	Reg. No.	Date	Item		
	497	1-16-23	1 Minnow seine 10-4 mesh		6.30
E974	Hatchery equipment				59.90
	Reg. No.	Date	Item		
	173	12-24-22	4 doz 1 1/4 in. Molasses Gates @ \$14.75		59.00
	1281	3-12-23	2 Feed mixers @ 45c.		.90
	Total for equipment			\$	3,032.17
F9	Miscellaneous Building			\$	570.07
F21	Pipe line at hatchery				2,462.10
	Total for structures			\$	3,032.17
<b>RECAPITULATION</b>					
A	Personal services			\$	2,343.65
B	Services other than personal				762.33
C	Materials				469.79
D	Supplies				1,478.20
E	Equipment				76.45
F	Structures				3,032.17
	Total expenditures for the year 1923			\$	8,162.59

## CLASSIFICATION OF DISBURSEMENTS

Sandpoint Hatchery  
Year 1923

<b>A. PERSONAL SERVICES</b>		
A1	Salaries of regular officers and employes	\$ 1,685.00
A3	Services of extra help	578.50
	Total	\$ 2,263.50

## B. SERVICES OTHER THAN PERSONAL

B2	Transportation of things		\$	255.74	
	2. Express		235.74		
	3. Drayage		20.00		
B4	Subsistence of animals and care of autos			1.50	
B5	Communication services			55.19	
	1. Telegraph		4.98		
	4. Telephone		50.15		
	(a) Rentals	\$	33.50		
	(b) Tolls		11.65		
	6. Postage			.96	
B9	Special and miscellaneous services other than personal			103.45	
	1. Repairing equipment		57.50		
	9. Miscellaneous		45.95		
	Total for services other than personal			\$	415.88

## C. MATERIALS

C2	Metals and metal products	\$	34.10		
C4	Lumber		35.64		
C5	Fiber products		.50		
C6	Paints and painters' materials		10.45		
	Total for materials			\$	80.69

## D. SUPPLIES

D13	Scientific supplies	\$	.40		
D22	Gasoline		92.79		
D3	Mechanics', engineers', and electricians supplies		83.09		
	1. Oil	\$	31.05		
	5. Electricians' supplies		5.65		
	9. Mechanics' supplies		46.39		
D48	Brooms and brushes		5.80		
D6	Forage and supplies for animals		441.16		
	1. Hay	\$	67.00		
	9. Fish food		374.16		
D8	Explosives		1.10		
D9	Miscellaneous supplies		2,516.00		
	4. Fish eggs	\$	2,500.00		
	9. Miscellaneous		16.00		
	Total for supplies			\$	3,140.25

## E. EQUIPMENT

E11	Heating equipment		\$	17.25
	Reg. No.	Date	Item	
	1588	11-22-23	1 Box heater	\$ 15.00
			6 Joints stove pipe	2.25





D5	Wearing apparel			
	1. Footwear (rubber boots)		7.50	\$ 7.50
D69	Fish food			238.18
D9	Miscellaneous supplies			48.95
	2. Water and ice	\$	40.95	
	3. Other household supplies		4.25	
	5. Packing receptacles (sacks)		3.75	
	Total for Supplies			\$ 474.43

**E. EQUIPMENT**

E11	Heating equipment			\$ 21.10
	Reg. No. Date Item			
	1597 11-23-23 1 Heater	\$	21.10	
E21	Production and construction equipment			2.40
	Reg. No. Date Item			
	1142 3- 1-23 1 Post mail	\$	2.40	
E25	Food preparing equipment			8.85
	Reg. No. Date Item			
	1296 9- 1-23 1 Tent stove and pipe		8.85	
E974	Hatchery equipment			13.68
	Reg. No. Date Item			
	287 9-12-23 4 Spawning pans	\$	3.60	
	546 3-29-23 6 Rubber bulbs at 50c		3.00	
	846 5-22-23 Netting for hatchery use		.58	
	1142 6- 3-23 30 ft. rubber hose		6.50	
	Total for equipment			\$ 46.03

**RECAPITULATION**

A	Personal service			\$ 2,331.90
B	Services other than personal			519.07
C	Materials			56.21
D	Supplies			474.43
E	Equipment			46.03
	Total Expenditures for the year 1923			\$ 3,427.64

**CLASSIFICATION OF DISBURSEMENTS**

<b>Spawn-Taking</b>				
<b>A. PERSONAL SERVICES</b>				
A3	Services of extra help			
	Total for personal service			731.20
<b>B. SERVICES OTHER THAN PERSONAL</b>				
B1	Transportation of persons			69.94
	1. By railways			
	(a) Fares	\$	15.65	\$ 15.65
	2. By highways			
				54.28

**FISH AND GAME WARDEN**

	(a) Fares	\$	17.38	
	(b) Allowances		36.90	\$
B2	Transportation of things			
	2. Express			35.73
	3. Drayage	\$	2.98	
			32.75	
B3	Board and lodging			
B5	Communication services			202.30
	1. Telegraph			3.10
	4. Telephone (tolls)	\$	1.50	
			1.60	
B9	Special and miscellaneous services other than personal			1.50
	1. Repairing equipment	\$	1.50	
	Total for Services other than personal			\$ 312.57

**C. MATERIALS**

C2	Metals and metal products	\$	2.85
C3	Non-metallic products		1.70
C4	Lumber		25.65
	Total for materials	\$	30.20

**D. SUPPLIES**

D2	Fuel	\$	.50
	1. Solid fuel	\$	.35
	2. Liquid fuel (gasoline)		.25
D3	Mechanics', engineers' and electricians' supplies	\$	1.70
	1. Oil	\$	.70
	5. Electricians' supplies		1.00
D48	Brooms and brushes		1.00
D98	Packing receptacles (sacks)		12.80
	Total for supplies	\$	16.10

**E. EQUIPMENT**

E21	Production and construction equipment	\$	2.00
	Reg. No. Date Item		
	1631 1 Buck-saw	\$	2.00
E45	Kitchen, dining room and household utensils		2.80
	Reg. No. Date Item		
	1631 1 Kettle	\$	.90
	1 Dish pan		1.25
	1 Can opener		.25
	4 Saucers		.40
	Total for equipment	\$	4.80

## RECAPITULATION

A	Personal services		
B	Services other than personal	\$	731.20
C	Materials		312.57
D	Supplies		30.20
E	Equipment		16.10
			4.50
Total Expenditures for the year 1923		\$	1,094.87

## CLASSIFICATION OF DISBURSEMENTS

Fish Distribution  
Year 1923

## A PERSONAL SERVICES

A1	Salaries of regular officers and employes	\$	1,237.63
A3	Services of extra help		94.75
A9	Miscellaneous		4.50
Total for personal services		\$	1,336.88

## B. SERVICES OTHER THAN PERSONAL

B1	Transportation of persons	\$	422.13
	1. By railways	\$	142.15
	(a) Fares		142.15
	2. By highways		279.98
	(a) Fares		190.70
	(b) Allowances		89.28
B2	Transportation of things		248.13
	2. Express	\$	14.33
	3. Drayage		233.30
B3	Board and lodging		435.60
B4	Subsistence of animals and care of autos		19.00
	1. Feed for horses	\$	19.00
B5	Communication services		34.48
	1. Telegraph	\$	13.09
	4. Telephone (tolls)		21.39
B9	Special and miscellaneous services other than personal		12.85
	1. Repairing equipment	\$	12.85
Total for services other than personal		\$	1,172.19

## C. MATERIALS

C2	Metals and metal products	\$	7.69
C4	Lumber		4.60
C5	Fiber products		2.90
C9	Miscellaneous		6.16
Total for materials		\$	21.35

## FISH AND GAME WARDEN

153

## D. SUPPLIES

D1	Stationary, educational and scientific supplies		
	1. Office	\$	1.00
	3. Scientific supplies		.50
D22	Gasoline		.50
D3	Mechanics', engineers', and electricians' supplies		44.93
	1. Oil		21.64
	5. Electrician's supplies		15.11
	9. Mechanic's supplies		3.25
			3.30
D48	Brooms and brushes		1.60
D9	Miscellaneous supplies		126.05
	2. Water and ice		122.35
	3. Other household supplies		.70
	8. Packing receptacles		1.25
	9. Miscellaneous		1.75
Total for supplies		\$	195.24

## E. EQUIPMENT

E12	Lighting equipment		4.35
	Reg. No. Date Item		
	851 5-28-23 1 Flash light		2.35
	1436 10-12-23 1 Lantern		2.00
E21	Production and construction equipment		.55
	Reg. No. Date Item		
	1300 9 - 7-23 1 Wrench		.55
E971	Fish screens and ladders		1.75
	Reg. No. Date Item		
	983 7 - 13-23 1 Wire screen		1.75
E973	Fish seines		40.00
	Reg. No. Date Item		
	137 10-30-23 1 Bag seine		40.00
E974	Hatchery equipment		.65
	Reg. No. Date Item		
	1245 9 - 20-23 1 Bulb for egg picker		.65
Total for equipment		\$	47.30

## RECAPITULATION

A	Personal services	\$1,336.88
B	Services other than personal	1,172.19
C	Materials	21.35
D	Supplies	195.24
E	Equipment	47.30
Total expenditures for the year 1923		\$2,772.96

ANNUAL REPORT  
**CLASSIFICATION OF DISBURSEMENTS**

**Predatory Animal Fund**

**A. PERSONAL SERVICES**

A1 Salaries of regular officers and employes .....		\$ 2,789.50
Total for personal services .....		\$ 2,789.50

**B. SERVICES OTHER THAN PERSONAL**

B1 Transportation of persons .....		\$ 359.55	\$ 359.55
2. By highways .....			
(a) Fares .....	24.85		
(b) Allowances .....	334.70		
B2 Transportation of things .....		13.00	13.00
3. Drayage .....			
B3 Board and lodging .....			55.60
E4 Subsistence of animals and care of autos.			1.00
1. Feed for horses .....		1.00	
E9 Special and miscellaneous service other than personal .....			30.00
9. Miscellaneous .....		30.00	
Total for services other than personal .....		\$ 459.15	

**D. SUPPLIES**

D9 Miscellaneous supplies .....		\$ 34.65
9. Miscellaneous (horses for coyote bait) .....		34.65
Total for supplies .....		\$ 34.65

**RECAPITULATION**

A Personal services .....	\$ 2,789.50
B Services other than personal .....	459.15
D Supplies .....	34.65
Total expenditures for the year 1923 .....	\$ 3,283.30

**RECAPITULATION**

A Personal services .....	\$ 94,971.89
B Services other than personal .....	34,456.20
C Materials .....	866.77
D Supplies .....	10,463.07
E Equipment .....	4,298.32
F Structures .....	11,081.44
H Refunds .....	736.64
J Fixed charges .....	822.73
Total of all expenditures for the year 1923 .....	\$157,697.06

**STATEMENT OF OPERATIONS IN GAME FUND, 1924.**

Balance on hand, January 1, 1924 .....	\$ 41,599.00	Total warrant issue in 1924 .....	\$137,921.79
Reserve for 1923 accounts payable \$ 9,022.62 .....		1923 accounts paid .....	\$ 9,022.62
Unencumbered balance, Jan. 1, 1924 .....	32,576.38	1924 accounts paid .....	128,899.17
Total revenue apportionment for year ending December 31, 1924 .....	\$145,484.66	Balance on hand, December 31, 1924 .....	\$ 49,161.87
Total .....	\$187,083.66	Total .....	\$187,083.66

## STATEMENT OF OPERATIONS IN GAME PREDATORY FUND, 1924.

Balance on hand, January 1, 1924 .....	\$ 12,976.70	Total warrant issue in 1924 .....	\$ 18,267.97
Reserve for 1923 accounts payable \$ 1,715.46		1923 accounts paid .....	\$ 1,715.46
Unencumbered balance .....	\$ 11,081.24	1924 accounts paid .....	\$ 16,552.51
Total revenue apportionment for year		Balance on hand, December 31, 1924 .....	\$ 14,012.98
ending December 31, 1924 .....	\$ 19,304.25		\$ 32,280.95
	\$ 32,280.95		

## GAME DEPARTMENT

January 1, 1924 to December 31, 1924

<b>Receipts, 1924</b>	
By balances in funds Jan 1, 1924 .....	\$ 54,575.70
By sale of resident fish and game licenses .....	\$ 121,156.20
By sale of non-resident fish and game licenses .....	2,755.00
By sale of non-resident bird licenses .....	4,446.00
By sale of non-resident fish licenses .....	15,751.80
By sale of alien fish licenses .....	845.50
By sale of alien gun licenses .....	175.75
By sale of resident trappers licenses .....	6,322.25
By sale of non-resident trappers licenses .....	23.75
By sale of re-shipping permits .....	464.80
By sale of selling and shipping permits .....	250.00
By sale of private pond permits .....	80.00
By sale of taxidermist licenses .....	200.00
	\$ 152,471.06
By 229 fines .....	\$ 5,122.25
By 74 confiscations .....	582.95
By sale of beaver hides .....	4,580.91
By sale of fish .....	152.17
By sale of pelts .....	103.50
By sale of venison .....	1.00
By sale of motor boat .....	20.00
By sale of coyote pelts .....	101.00
By rent of Warm River Hatchery .....	60.00
By court costs .....	33.50
By miscellaneous .....	4.85
By commission saved .....	92.80
By cancellation of warrants .....	463.83
	\$ 12,317.36
	\$ 164,788.91
	\$ 219,344.61

## WARRANT ISSUE, 1924

To January warrants for December claims .....	\$ 10,735.68
To February warrants for January claims .....	10,302.86
To March warrants for February claims .....	9,599.36
To April warrants for March claims .....	12,892.88
To May warrants for April claims .....	12,292.02
To June warrants for May claims .....	13,624.66
To July warrants for June claims .....	11,888.67
To August warrants for July claims .....	12,540.91
To September warrants for August claims .....	14,281.39
To October warrants for September claims .....	13,468.47

To November warrants for October claims	18,042.91
To December warrants for November claims	15,097.88
	156,189.76

## RECONCILIATION

Total receipts plus balance	\$219,364.61
Total disbursements	156,189.76

By balance in funds January 1, 1925 \$ 63,174.85

## CLASSIFICATION OF DISBURSEMENTS

Fish and Game  
General Year 1924

## A. PERSONAL SERVICES

A1 Salaries of regular officers and employes	\$ 67,067.54
A3 Services of extra help	286.35
A69 Taxidermist services	6.00
A9 Miscellaneous	25.00
Total for personal services	\$ 67,393.89

## B. SERVICES OTHER THAN PERSONAL

B1 Transportation of persons	979.54	\$ 19,881.51
1 By railways		
(a) Fares	979.54	
2 By highways		
(a) Fares	162.77	18,837.37
(b) Allowances	18,724.60	
3 By water		
(a) Fares	9.10	9.10
5 Local transportation (taxi)		
9 Incidentals (tolls)		3.50
B2 Transportation of things		303.62
1 Freight		2.00
2 Express		15.39
3 Drayage		139.38
5 Money orders and bank drafts		90.50
9 Duty on Partridges		1.35
B3 Board and lodging		57.00
B4 Subsistence of animals and care of autos		3,148.05
1 Feeding game birds, etc.		
7 Storage of autos		353.27
B5 Communication service		235.92
1 Telegraph		117.35
4 Telephone		
		168.37
		1,238.96
		700.57

## FISH AND GAME WARDEN

159

(a) Rentals	34.00
(b) Tolls	616.57
6 Postage	370.02
B6 Printing, typing, engraving and binding	\$ 2,246.65
1 Printing	2,032.35
6 Typing	212.00
8 Photographs and maps	200.00
B7 Advertising	325.57
5 Proclamations and announcements	
B9 Special and miscellaneous services other than personal	903.77
1 Repairing equipment	851.90
2 Storage on birds	1.25
9 Miscellaneous	50.62
Total for services other than personal.	\$ 23,401.40
C. MATERIALS	
C2 Metals and metal products	\$ 83.74
C3 Non-metallic mineral products	1.00
C4 Lumber	92.25
C6 Paints and painters' materials	9.29
Total for materials	\$ 186.28
D. SUPPLIES	
D1 Stationery, education and scientific supplies	\$ 345.33
1 Office supplies	334.73
3 Scientific supplies	6.60
5 Ore. State Game Commission reports	14.50
D2 Fuel	898.19
1 Solid fuel	.59
2 Liquid fuel (gasoline)	897.60
D3 Mechanics', engineers', and electricians' supplies	903.97
1 Oil	190.79
3 Polishing supplies	.70
5 Electricians' supplies	50.85
9 Mechanics' supplies	661.63
D4 Cleaning and toilet supplies	7.89
5 Disinfectant	.50
8 Brooms and brushes	7.39
D5 Wearing apparel	6.00
3 Outer footwear (rubber boots)	
D6 Forage and supplies for animals	398.48
1 Hay	302.66
9 Miscellaneous (salt)	95.80

D9	Miscellaneous supplies .....			
	2. Water and ice .....	\$	26.85	126.20
	4. Pheasant eggs .....		75.00	
	5. Deputy Game Warden badges .....		20.00	
	8. Packing receptacles (sacks) .....		4.35	
	Total for supplies .....			

\$ 2,636.54

### E. EQUIPMENT

E12	Lighting equipment .....			\$	1.00
	Reg. No. Date Item				
	1300 6-5-24 1 R. R. lantern .....	\$	1.00		
E21	Production and construction equipment .....				6.65
	Reg. No. Date Item				
	736 6-7-24 1 Hay rake .....	\$	.50		
			1 Grass scythe .....	4.50	
	1330 6-5-24 1 Axe .....		1.00		
	1702 12-6-24 1 4-in fork handle .....		.65		
E24	Timber working equipment .....				12.25
	Reg. No. Date Item				
	736 7-7-24 1 5-ft. cross cut saw .....	\$	8.50		
			1 Axe .....	3.75	
E26	Printing equipment .....				2.45
	Reg. No. Date Item				
	736 6-7-24 1 Set 2-in. stencils .....	\$	2.45		
E35	Transporting and conveying equipment .....				5.25
	Reg. No. Date Item				
	738 3-24-24 1 Pack bag .....	\$	5.25		
E38	Harness, saddlery and other stable equip- ment .....			\$	15.19
	Reg. No. Date Item				
	491 3-24-24 1 Pack saddle .....	\$	2.00		
	1648 10-14-24 1 Pack saddle & bridle .....		13.19		
E45	Kitchen, dining room and household uten- sils .....			\$	.95
	Reg. No. Date Item				
	765 6-2-24 1 Colander .....	\$	.50		
			1 Spoon .....	.45	
E48	Office equipment .....				75.53
	Reg. No. Date Item				
	189 2-7-24 1 Underwood typewriter				
			No. 5/1766499 \$102.50		
			less 10 & 10% 19.47		
			\$ 83.03		
			Allowance on		
			No. 5/14220116		
			Underwood		
			40.00 \$	43.03	

### FISH AND GAME WARDEN

1165	9-4-24	1 5-section book case		32.50
E53	Cleaning equipment .....			\$ 1.00
	Reg. No. Date Item			
	765 6-2-24 1 Galv. tub .....	\$	1.00	
E59	Miscellaneous care taking equipment .....			2.10
	Reg. No. Date Item			
	644 4-26-24 Pans for pheasants .....	\$	1.75	
	781 6-20-24 2 drinking fountains .....		.35	
E82	Produce-yielding animals .....			529.75
	Reg. No. Date Item			
	79 12-27-24 50 pair Hungarian partridges at \$7.50 pr. \$		375.00	
	107 1 7-24 5 Chinese pheasants at \$1.50 each .....		7.50	
			15 Chinese pheasants at \$2.50 each .....	37.50
	108 1-7-14 8 Chinese pheasants at \$1.50 each .....		12.00	
			8 Chinese pheasants .....	20.00
	109 12-18-23 3 Chinese pheasants .....		3.00	
	139 12-31-23 1 Chinese pheasant .....		.75	
	238 12-20-23 1 Chinese pheasant .....		.75	
	511 4-24-24 15 Setting hens at \$1 ea.		15.00	
	644 5-14-24 1 Hen .....		1.00	
			4-27-24 2 Hens .....	2.00
	763 6-13-24 13 Week old pheasants at 25c each .....		4.25	
	878 7-2-24 29 Chinese pheasants at 50c each .....		14.50	
	879 6-30-24 7 Chinese pheasants at 50c each .....		3.50	
	1040 7-30-24 6 Chinese pheasants at 50c each .....		3.00	
	1041 7-21-24 10 Chinese pheasants at 50c each .....		5.00	
	1042 7-13-24 5 Chinese pheasants at 50c each .....		2.50	
	1043 7-24 6 Chinese pheasants at 50c each .....		3.00	
	1044 7-24 14 Chinese pheasants at 50c each .....		7.00	
	1045 7-21-24 7 Chinese pheasants at 50c each .....		3.50	
	1046 7-24 7 Chinese pheasants at 50c each .....		3.50	
	1223 8-20-24 4 Chinese pheasants at 50c each .....		2.00	
	1224 8-12-24 6 Chinese pheasants at 50c each .....		3.00	

1263	9-30-24	1 Chinese pheasant at 50c	.50	
E971 Fish screens				\$ 1.59
Reg. No.	Date	Item		
765	5-28-24	8 Sq. ft. netting	.24	
	6-2-24	4½ ft. copper screen	1.35	
E973 Fish seines				25.90
Reg. No.	Date	Item		
52	11-26-23	Seine twine	.75	
876	7-17-24	1 10-ft. minnow seine	1.75	
1034	7-30-24	1 1/12 doz. dip nets	16.90	
1229	8-4-24	2 minnow seines	3.50	
1230	8-20-24	1 minnow seine	3.90	
E974 Hatchery equipment				14.75
Reg. No.	Date	Item		
765	6-2-24	1 food chopper	3.50	
		5/6 doz. molasses gates	11.25	
Total for equipment				\$ 694.36

**F. STRUCTURE**

F1 Building				
9. Game cabin, etc.		\$ 115.56		115.56
Total for structures				\$ 115.56

**J. FIXED CHARGES**

J1 Rents				
2. Rent on structures		\$ 2.25		4.50
3. Rent on equipment		2.25		
J5 Insurance				333.87
1. Fire insurance		\$ 33.09		
2. Compensation insurance		136.78		
3. Premium on bonds		164.00		
Total for structures				\$ 363.37

**RECAPITULATION**

A Personal services	\$ 67,393.89
B Services other than personal	28,401.40
C Materials	186.28
D Supplies	2,686.54
E Equipment	694.36
F Structures	115.56
J Fixed charges	363.37
Total expenditures for the year 1924	
	\$ 99,841.40

**CLASSIFICATION OF DISBURSEMENTS****A. PERSONAL SERVICES**

## Ashton Hatchery

Year 1924

A1 Salaries of regular officers and employes	\$ 3,590.00
A3 Services of extra help	126.40
A9 Miscellaneous services	14.15
Total for personal services	
	\$ 3,730.56

**B. SERVICES OTHER THAN PERSONAL**

B1 Transportation of persons	\$ 10.00
1. By railway	10.00
(a) Fares	10.00
B2 Transportation of things	549.81
1. Freight	8.33
2. Express	495.37
3. Drayage	45.61
B3 Board and lodging	39.35
B5 Communication services	65.20
1. Telegraph	6.09
4. Telephone	47.41
(a) Rentals	24.15
(b) Tolls	23.26
6. Postage	11.70
B6 Printing	1.08
8. Photographs and maps	1.08
B9 Special and miscellaneous services other than personal	145.95
1. Repairing equipment	25.95
9. Miscellaneous services (Men and teams)	120.00

Total for services other than personal

\$ 361.89

**C. MATERIALS**

C2 Metals and metal products	\$ 117.73
C3 Non-metallic mineral products	24.20
C4 Lumber	17.80
C6 Paints and painters' materials	30.55
Total for materials	
	\$ 180.28

**D. SUPPLIES**

D13 Scientific supplies	\$ 7.15
D2 Fuel	294.74
1. Solid fuel (coal and wood)	139.05
2. Liquid fuel (gasoline)	163.94
3. Mantles	1.75

D3	Mechanics', engineers', and electricians' supplies		
	1. Oil	13.90	\$ 93.92
	5. Electricians' supplies	6.85	
	9. Mechanics' supplies	73.17	
D48	Brooms and brushes		3.70
D5	Wearing apparel		62.55
	3. Outer footwear (rubber boots)	50.65	
	7. Material by the yard	2.00	
D6	Forage and supplies for animals		1,354.85
	1. Hay	100.90	
	7. Horse shoes	2.00	
	9. Fish food	1,251.75	
D8	Explosives		7.70
D9	Miscellaneous supplies		81.45
	2. Water and ice	68.95	
	8. Packing receptacles (sacks)	12.50	
	Total for supplies		\$ 1,835.86

## E. EQUIPMENT

E45	Kitchen, dining room and household utensils		\$ 5.65
	Reg. No. Date Item		
	265 12-29-23 4 Pans	\$ 2.60	
	708 5-10-24 2 Pans	1.00	
	576 4-15-24 2 Pins	1.05	
	509 4-8-24 1 Egg beater	.55	
		.45	
	1 Butcher knife		
E973	Fish seines		10.00
	Reg. No. Date Item		
	1337 9-30-24 1 4-ft. x 15-ft 1-in., 12 thd. seine	\$ 10.00	
E11	Heating equipment		31.00
	Reg. No. Date Item		
	96 12-8-23 1 Round oak heater and pipe	29.35	
	11672 10-31-24 1 grate for heater	1.65	
E21	Production and construction equipment		14.85
	Reg. No. Date Item		
	204 1-10-24 1 Pr. ice tongs	2.75	
	305 12-23-23 1 doz. traps	3.00	
	576 4-5-24 2 Flakes	2.00	
		1.20	
	999 7-31-24 1 Hoe	4.00	
	1709 10-2-24 2 Shovels	1.20	
		4.00	
	1 Hammer	.90	
E974	Hatchery equipment		54.36
	Reg. No. Date Item		
	207 5 doz. Molasses gates @ \$10.75 per doz	53.75	

## FISH AND GAME WARDEN

1709	9-18-24	2 Feed spoons	.60
	Total for equipment		\$ 115.85
<b>F. STRUCTURES</b>			
F19	Payment on Ashton hatchery		\$ 3,925.31
F16	Stable, sheds and shelters		327.19
F4	Retaining and restraining walls and dams		62.50
	1. Flume and dam (material)	\$ 62.50	
	Total for structures		\$ 4,315.00
<b>J. FIXED CHARGES</b>			
J5	Insurance		\$ 210.00
	1. Fire insurance (hatchery building)	\$ 210.00	
	Total for fixed charges		\$ 210.00
<b>RECAPITULATION</b>			
A	Personal services		\$ 3,770.55
B	Services other than personal		861.89
C	Materials		180.23
D	Supplies		1,895.86
E	Equipment		115.85
F	Structures		4,315.00
J	Fixed charges		210.00
	Total expenditures for the year 1924		\$ 11,339.43

## CLASSIFICATIONS OF DISBURSEMENTS

Hay Spur Hatchery  
Year 1924

<b>A. PERSONAL SERVICES</b>		
A1	Salaries of regular officers and employes	\$ 2,519.55
A3	Services of extra help	196.95
	Total for personal services	\$ 2,716.50
<b>B. SERVICES OTHER THAN PERSONAL</b>		
B1	Transportation of persons	\$ 4.99
	1. By railway	
	(a) Fares	\$ 4.99
B2	Transportation of things	422.11
	1. Freight	\$ 101.64
	2. Express	302.97
	3. Drayage	17.50
B3	Board and lodging	169.35
B5	Communication services	83.22
	1. Telegraph	\$ 5.61
	4. Telephone	79.17
	(a) Rentals	\$ 24.00
	(b) Tolls	55.17
	6. Postage	3.44



B9	Special and miscellaneous services other than personal		
	1. Repairing equipment	\$ 190.55	\$ 190.55
	Total for services other than personal		\$ 875.12

**C. MATERIALS**

C2	Metal and metal products		\$ 9.70
C3	Non-metallic mineral products		2.20
C4	Lumber		5.76
C5	Fiber products		10.85
C6	Paints and painters' materials		55.68
	Total for materials		\$ 84.19

**D. SUPPLIES**

D13	Scientific supplies		\$ 4.30
D2	Fuel		329.17
	1. Wood and coal	163.25	
	2. Liquid fuel (gasoline)	1659.92	
D8	Mechanic's, engineers', and electricians' supplies		200.48
	1. Oil	35.60	
	5. Electricians' supplies	16.75	
	9. Mechanics' supplies	148.13	
D48	Brooms and brushes		8.20
D5	Wearing apparel		45.70
	3. Outer footwear (rubber boots)	43.70	
	7. Material by the yard	2.00	
D6	Forage and other supplies for animals		716.77
	1. Hay	31.17	
	9. Fish food	685.60	
D9	Miscellaneous supplies		80.10
	2. Water and ice	76.50	
	8. Packing receptacles (sacks)	.30	
	9. Miscellaneous	3.30	
	Total for supplies		\$ 1,384.72

**E. EQUIPMENT**

E11	Heating equipment		\$ .70
	Reg. No. Date Item		
	461 12-1-23 Stove pipe		.70
E21	Production and construction equipment		4.50
	Reg. No. Date Item		
	210 1-21-24 1 pr. Ice tongs		4.50
E22	Metal working equipment		.65
	Reg. No. Date Item		
	1010 2-28-24 1 Soldering iron		.65
E24	Timber working equipment		1.10

	Reg. No. Date Item		
	210 10-20-24 1 doz. 12 in. saw blades	1.10	
E44	Portiers, draperies and window shades		4.20
	Reg. No. Date Item		
	1342 7-12-24 2 window shades @ 85c	1.70	
	1 Window shade	2.50	
E47	Bedding		14.50
	Reg. No. Date Item		
	1342 7-23-24 2 Quilts	\$ 10.00	
	1 Pr. pillows	4.50	
E971	Fish screens		10.10
	Reg. No. Date Item		
	1010 6-24 Wire screen	\$ 10.10	
E974	Hatchery equipment		51.20
	Reg. No. Date Item		
	611 3-17-24 1 Meat chopper	\$ 51.20	
	Total for equipment		\$ 86.95
	<b>J. FIXED CHARGES</b>		\$ 90.00
J5	Insurance		\$ 90.00
	1. Insurance on hatchery building	\$ 90.00	
	Total for fixed charges		\$ 90.00
	<b>RECAPITULATION</b>		\$ 2,716.50
A	Personal services		878.12
B	Services other than personal		84.19
C	Materials		1,384.72
D	Supplies		86.95
E	Equipment		90.00
J	Fixed charges		
	Total expenditures for the year 1924		\$ 5,237.48

**CLASSIFICATION OF DISBURSEMENTS**

Sandpoint Hatchery		
Year 1924		
<b>A. PERSONAL SERVICES</b>		\$ 2,720.00
A1	Salaries of regular officers and employees	131.00
A3	Services of extra help	\$ 2,851.00
	Total for personal services	
<b>B. SERVICES OTHER THAN PERSONAL</b>		\$ 24.10
B1	Transportation of persons	\$ 21.70
	1. By railways	
	(a) Fares	\$ 21.70

2. By highways		2.40	
(a) Fares	2.40		
B2 Transportation of things			348.96
2. Express		\$ 144.71	
3. Drayage		204.26	
B3 Board and lodging			2.45
B5 Communication services			49.57
1. Telegraph		\$ 2.32	
4. Telephone		47.25	
(a) Rentals	\$ 38.50		
(b) Tolls	8.75		
B9 Special and miscellaneous services other than personal			76.82
1. Repairing equipment	\$ 66.80		
9. Miscellaneous services	10.02		
Total for services other than personal		\$ 561.90	

**C. MATERIALS**

C2 Metals and metal products	\$ 14.47	
C3 Non-metallic mineral products	24.50	
C4 Lumber	51.30	
C5 Fiber products	3.10	
Total for materials	\$ 93.37	

**D. SUPPLIES**

D13 Scientific supplies	\$ 1.50	
D22 Liquid fuel (gasoline)	168.46	
D3 Mechanics', engineers', and electricians' supplies		91.79
1. Oil	\$ 43.58	
5. Electricians' supplies	4.00	
9. Mechanics' supplies	44.21	
D48 Brooms and brushes		3.75
D5 Wearing apparel		25.85
3. Outer footwear (rubber boots)	\$ 15.00	
7. Material by the yard	10.85	
D6 Forage and other supplies for animals		253.99
9. Fish food	\$ 253.99	
D9 Miscellaneous supplies		1,835.14
4. Fish eggs	\$ 1,828.64	
8. Packing receptacles (sacks)	5.00	
9. Miscellaneous	1.50	
Total for supplies	\$ 2,380.48	

**E. EQUIPMENT**

E21 Production and construction equipment		\$ 4.95
Reg. No. Date Item		
488 2- 1-24 2 Shovels	\$ 3.95	
1350 8-25-24 1 Wrench	1.00	
E45 Kitchen, dining room and household utensils		5.35
Reg. No. Date Item		
568 4-11-24 2 Wash boilers at \$2.50	\$ 5.00	
1 Pan	.35	
E974 Hatchery equipment		210.50
Reg. No. Date Item		
750 5-31-24 40 "Cleveland Brand" 10-gal. cans at \$5 each	200.00	
867 6-15-24 1 Meat chopper	10.50	
Total for equipment	\$ 220.80	

**J. FIXED CHARGES**

J5 Insurance	\$ 96.00
1. Insurance on hatchery building	\$ 96.00
Total for fixed charges	\$ 96.00

**RECAPITULATION**

A Personal services	\$ 2,351.00
B Services other than personal	501.90
C Materials	93.37
D Supplies	2,380.48
E Equipment	220.80
J Fixed charges	96.00

Total expenditures for the year 1924 \$ 6,143.55

**CLASSIFICATION OF DISBURSEMENTS****Coeur d'Alene Hatchery  
Year 1924****A. PERSONAL SERVICES**

A1 Salaries of regular officers and employes.	\$ 2,350.00
A9 Miscellaneous services	32.00
Total for personal services	\$ 2,382.00

**B. SERVICES OTHER THAN PERSONAL**

B1 Transportation of persons	\$ 37.79
1. By railways	\$ 36.79
(a) Fares	\$ 1.00
2. By highways	\$ 1.00
(a) Fares	\$ 1.00

B2	Transportation of things .....			
	2. Express .....	\$ .78		161.58
	3. Drayage .....	161.20		
B3	Board and lodging .....			
B5	Communication services .....			69.40
	1. Telegraph .....	\$ 3.04		69.01
	4. Telephone .....	62.30		
	(a) Rentals .....	\$ 57.00		
	(b) Tolls .....	5.30		
	6. Postage .....		3.67	
B8	Furnishing of heat, light and electricity .....			
	4. Electricity .....	\$ 27.86		341.86
	5. Water (other than domestic) .....		314.00	
B9	Special and miscellaneous services other than personal .....			
	1. Repairing equipment .....	\$ 3.00		3.00
	Total for services other than personal .....			\$ 683.04

## C. MATERIAL

C2	Metals and metal products .....	\$ 11.77		
C3	Non-metallic mineral products .....	2.75		
C4	Lumber .....	7.05		
C5	Fiber products .....	1.64		
C6	Paints and Painter's materials .....	33.00		
	Total for materials .....			\$ 56.21

## D. SUPPLIES

D1	Stationery and educational supplies .....	\$ 2.00		
	1. Office .....	.50		
	3. Scientific supplies .....	1.50		
D2	Fuel .....			101.00
	1. Wood and coal .....	\$ 91.00		
	2. Liquid fuel (gasoline) .....	10.00		
D3	Mechanics', engineers', and electricians' supplies .....			13.60
	1. Oil .....	\$ 3.00		
	5. Electricians' supplies .....	7.70		
	9. Mechanics' supplies .....	2.90		
D48	Brooms and brushes .....			3.80
D5	Wearing apparel .....			44.40
	3. Footwear (rubber boots) .....	\$ 44.40		
D69	Fish food .....			
				166.45

D9	Miscellaneous supplies .....			84.88
	2. Water and ice .....	\$ 60.27		
	3. Packing receptacles (sacks) .....	13.16		
	9. Miscellaneous supplies .....	11.45		
	Total for supplies .....			\$ 416.13

## E. EQUIPMENT

E11	Heating equipment .....			\$ 8.25
	Reg. No. Date Item			
	1203 8-16-24 1 Camp stove .....	\$ 8.25		
E21	Production and construction equipment .....			1.10
	Reg. No. Date Item			
	1018 10- -23 1 File .....	\$ .35		
	1203 8-16-24 1 Axe handle .....	.75		
E974	Hatchery equipment .....			\$ 14.90
	Reg. No. Date Item			
	181 12-20-23 6 Rubber bulbs for hatchery use .....	\$ 3.15		
	1018 6-20-24 30 Ft. rubber hose .....	6.85		
	7-29-24 1 Molasses gate .....	1.50		
	1203 8-16-24 4 Spawning pans .....	3.40		
	Total for equipment .....			\$ 24.25

## RECAPITULATION

A	Personal services .....	\$ 2,382.00
B	Services other than personal .....	683.04
C	Materials .....	56.21
D	Supplies .....	416.13
E	Equipment .....	24.25
	Total expenditures for the year 1924 .....	\$ 3,561.63

## CLASSIFICATION OF DISBURSEMENTS

Grangeville Hatchery  
Year 1924

A69	Miscellaneous services .....	\$ 25.00
	Total for personal services .....	\$ 25.00
B1	Transportation of persons .....	\$ 44.70
	1. By railways .....	\$ 32.70
	(a) Fares .....	11.00
	2. By highways .....	11.00
	(b) Allowances .....	1.00
	5. Local transportation (taxi) .....	

B2	Transportation of things .....		114.36
	1. Freight .....	\$ 9.36	
	2. Express .....	105.00	
B3	Board and lodging .....		11.45
B7	Advertising and publication of notices .....		21.95
	1. Advertisements for bids .....	\$ 21.95	
	Total for services other than personal .....		\$ 192.66

**D. SUPPLIES**

D22	Liquid fuel (gasoline) .....	\$	4.84
D31	Oil .....		.60
	Total for supplies .....	\$	5.55

**E. EQUIPMENT**

E974	Hatchery equipment .....	\$	10.93
	Reg. No. Date Item		
	1685 12-2-24 2-3 doz. molasses gates at \$4.50 per doz. ....	\$	4.33
	1726 12-16-24 1-2 doz. molasses gates .....		6.60
	Total for equipment .....	\$	10.93

**F. STRUCTURES**

F1	Structures .....	\$	4,630.42
	2. Grangeville hatchery .....	\$	4,630.42
	Total for structures .....	\$	4,630.42

**J. FIXED CHARGES**

J5	Insurance .....	\$	144.00
	1. Insurance on hatchery .....	\$	144.00
	Total for fixed charges .....	\$	144.00

**RECAPITULATION**

A	Personal services .....	\$	25.00
B	Services other than personal .....		192.66
D	Supplies .....		5.55
E	Equipment .....		10.93
F	Structures .....		4,630.42
J	Fixed Charges .....		144.00
	Total expenditures for the year 1924 .....	\$	5,008.56

**CLASSIFICATION OF DISBURSEMENTS**Field Stations  
Year 1924**A. PERSONAL SERVICES**

A1	Salaries of regular officers and employees .....	\$	370.15
A3	Services of extra help .....		47.65
	Total for personal services .....	\$	419.80

**B. SERVICES OTHER THAN PERSONAL**

B1	Transportation of persons .....	\$	61.60
	1. By railways .....	\$	25.30
	(a) Fares .....	\$	25.30
	2. By highways .....		36.30
	(b) Allowances .....	\$	36.30
B2	Transportation of things .....		43.43
	1. Freight .....	\$	9.99
	2. Express .....		6.19
	3. Drayage .....		27.25
B3	Board and lodging .....		102.65
B9	Special and miscellaneous services other than personal .....		10.00
	1. Repairing equipment .....	\$	7.50
	9. Miscellaneous services (man and team) .....		2.50
	Total for services other than personal .....	\$	217.68

**C. MATERIALS**

C2	Metals and metal products .....	\$	5.51
C4	Lumber .....		247.66
C5	Fiber products .....		.20
C6	Paints and painters' materials .....		10.35
	Total for materials .....	\$	263.72

**D. SUPPLIES**

D69	Fish food .....	\$	29.16
D9	Miscellaneous supplies .....		.90
	2. Water and ice .....	\$	.50
	9. Miscellaneous .....		.40
	Total for supplies .....	\$	30.06

**E. EQUIPMENT**

E971	Fish screens .....	\$	.25
	Reg. No. Date Item		
	1150 7-28-24 Screen .....	\$	.25

E374 Hatchery equipment					.70
Reg. No.	Date	Item			
955	7- 7-24	2 Pans	\$	.70	
Total for equipment			\$		.95

**J. FIXED CHARGES**

J1 Rents					
2. Structures		\$	30.00	\$	30.00
Total for fixed charges			\$		30.00

**RECAPITULATION**

A Personal services		\$	419.80
B Services other than personal			217.63
C Materials			263.72
D Supplies			30.06
E Equipment			.95
J Fixed charges			30.00
Total expenditures for the year 1924			\$ 962.21

**CLASSIFICATION OF DISBURSEMENTS**Spawn-Taking  
Year 1924**A. PERSONAL SERVICES**

A1 Salaries of regular officers and employes		\$	400.00
A3 Services of extra help			957.83
A9 Miscellaneous			2.15
Total for personal services			\$ 1,359.98

**B. SERVICES OTHER THAN PERSONAL**

B1 Transportation of persons		\$	174.26
1. By railways		\$	21.96
(a) Fares		\$	21.96
2. By highways		\$	152.30
(a) Fares		\$	5.00
(b) Allowances		\$	147.30
B2 Transportation of things		\$	116.00
3. Drayage			
B3 Board and lodging		\$	116.00
B5 Communication services			378.77
1. Telegraph			3.60
4. Telephone (tolls)		\$	.30
6. Postage			2.80
			.50
B9 Special and miscellaneous services other than personal			36.00

**FISH AND GAME WARDEN**

175

9. Miscellaneous services		\$	35.00
Total for services other than personal			\$ 707.63

**C. MATERIAL**

C2 Metals and metal products		\$	5.85
C4 Lumber			35.50
C5 Fiber products			1.94
Total for materials			\$ 43.29

**D. SUPPLIES**

D11 Office supplies		\$	.20
D2 Fuel			11.25
1. Wood and coal		7.85	
2. Liquid fuel (gasoline)		3.40	
D35 Electricians' supplies			2.00
D48 Brooms and brushes			1.35
D5 Wearing apparel			37.65
3. Outer footwear (rubber boots)		\$	37.65
D9 Miscellaneous supplies			8.10
8. Packing receptacles (sacks)		\$	1.50
9. Miscellaneous			.60
Total for supplies			\$ 60.55

**E. EQUIPMENT**

E11 Heating equipment		\$	11.75
Reg. No.	Date	Item	
1450	9-27-24	1 Stove	\$ 10.00
1689	9- 4-24	4 stove pipes	1.20
		1 Elbow	.30
		1 Damper	.25
E41 Furniture and furnishings			4.50
Reg. No.	Date	Item	
1450	9-27-24	1 Bed	\$ 4.50
E45 Kitchen, dining room and household utensils			2.90
Reg. No.	Date	Item	
620	4-23-24	1 Can opener	\$ .15
1689	9- 5-24	2 Lids	.20
		1 Coffee pot	.90
		1 Can opener	.15
		1 Dish pan	1.50
E53 Cleaning equipment			\$ 3.50
Reg. No.	Date	Item	
1617	4-12-24	2 Wash tubs	\$ 3.50

E974 Hatchery equipment .....		2.40
Reg. No. Date Item		
687 4-23-24 Spawning pans .....	\$	2.40
Total for equipment .....	\$	25.05
<b>F. STRUCTURES</b>		
F4 Building fish trap .....	\$	67.20
Total for structures .....	\$	67.20
<b>RECAPITULATION</b>		
A Personal services .....	\$	1,359.98
B Services other than personal .....		707.53
C Materials .....		43.29
D Supplies .....		60.55
E Equipment .....		25.05
F Structures .....		67.20
Total expenditures for the year 1924 .....	\$	2,263.70

#### CLASSIFICATION OF DISBURSEMENTS

##### Fish Distribution Year 1924

<b>A. PERSONAL SERVICES</b>		
A1 Personal services .....	\$	1,550.14
A3 Services of extra help .....		212.33
Total for personal services .....	\$	1,762.47
<b>B. SERVICES OTHER THAN PERSONAL</b>		
B1 Transportation of persons .....	\$	369.09
1. By railways .....	\$	107.14
(a) Fares .....	\$	107.14
2. By highways .....		260.95
(a) Allowances .....		260.95
B2 Transportation of things .....		345.60
2 Express .....		7.25
3 Drayage .....		338.35
B3 Board and lodging .....		460.55
B5 Communication services .....		32.19
1. Telegraph .....		6.04
4. Telephone (tolls) .....		23.20
6. Postage .....		2.95
B9 Special and miscellaneous services other than personal .....		543.75
9. Miscellaneous (use of men and trucks) .....		543.75
Total for services other than personal .....	\$	1,750.18

<b>C. MATERIALS</b>		
C5 Fiber products .....	\$	1.20
Total for materials .....	\$	1.20
<b>D. SUPPLIES</b>		
D22 Liquid fuel (gasoline) .....	\$	19.40
D3 Mechanics', engineers', and electricians' supplies .....		8.43
1. Oil .....	5.88	
2. Electricians' supplies .....	2.55	
D92 Water and ice .....		32.75
Total for supplies .....	\$	60.58
<b>E. EQUIPMENT</b>		
E972 Miscellaneous equipment .....	\$	13.65
Reg. No. Date Item		
480 2 - 1-24 1 Fish pail with tray .....	7.50	
1 Fish pail without tray .....	6.15	
E973 Fish seines .....		5.75
Reg. No. Date Item		
721 5 -28-24 1 Minnow seine .....	1.75	
1029 7 - 2-24 1 Dip net .....	1.50	
1031 7 -25-24 1 Minnow seine .....	2.50	
Total for equipment .....	\$	19.40

<b>RECAPITULATION</b>		
A Personal services .....	\$	1,762.47
B Services other than personal .....		1,750.18
C Materials .....		1.20
D Supplies .....		60.58
E Equipment .....		19.40
Total expenditures for the year 1924 .....	\$	3,593.83

#### CLASSIFICATION OF DISBURSEMENTS

##### Predatory Animal Fund Year 1924

<b>A. PERSONAL SERVICES</b>		
A1 Salaries of regular officers and employees .....	\$	14,853.62
A3 Services of extra help .....		3.00
Total for personal services .....	\$	14,853.62
<b>B. SERVICES OTHER THAN PERSONAL</b>		
B1 Transportation of persons .....		171.01
1. By railway .....		171.01
(a) Fares .....		171.01
2. By highways .....		2,396.82



526	Class 2-B Non-Res. Bird Licenses @	4.75	3,923.50
4,996	Class 2-C Non-Res. Fish Licenses @	2.70	13,489.20
2	Class 3-A Alien F. & G. Licenses @	47.50	95.00
61	Class 3-B Alien Fish Licenses @	9.50	579.50
74	Class 3-C Alien Gun Licenses @	4.75	351.50
1,547	Class 1-D Res. Trappers Licenses @	4.75	7,348.25
5	Class 2-D Non-Res. Trappers Licenses @	23.75	118.75
804	Re-shipping Permits @	.40	321.60
20	Selling and Shipping Permits @	10.00	200.00
27	Taxidermist Licenses @	10.00	270.00
6	Private Pond Permits @	10.00	60.00
73,424			\$146,009.20

## EXHIBIT "B"

Tabulation of fish and game licenses of the years 1922, 1923 and 1924, revenue for which was received and reported during the calendar year of 1924.

No. sold	Class	Amount
67,309	Class 1 Res. F & G. Licenses @	1.80 \$121,156.20
116	Class 2-A Non-Res. F. & G. Licenses @	23.75 2,755.00
5,834	Class 2-B Non-Res. Bird Licenses @	4.75 4,446.00
5,834	Class 2-C Non-Res. Fish Licenses @	2.70 15,751.80
89	Class 3-B Alien Fish Licenses @	9.50 845.50
37	Class 2-C Alien Gun Licenses @	4.75 175.75
1,331	Class 1-D Res. Trappers Licenses @	4.75 6,322.25
1	Class 2-D Non-Res. Trappers Licenses @	23.75 23.75
1,162	Re-shipping Permits @	.40 464.80
25	Selling & Shipping Permits @	10.00 250.00
8	Private Pond Permits @	10.00 80.00
20	Taxidermist Licenses @	10.00 200.00
76,868		\$152,471.05

## EXHIBIT "C"

Tabulation of 1923 fish and game licenses revenue for which was received and reported during the calendar year of 1923.

No. Sold	Class	Amount
58,893	Class 1 Res. F. & G. Licenses @	1.80 \$105,647.00
58	Class 2-A Non-Res. F. & G. Licenses @	23.75 1,377.50
647	Class 2-B Non-Res. Bird Licenses @	4.75 3,073.25
4,422	Class 2-C Non-Res. Fish Licenses @	2.70 11,939.40
2	Class 3-A Alien F. & G. Licenses @	47.50 95.00

47	Class 3-B Alien Fish Licenses @	9.50	446.50
57	Class 3-C Alien Gun Licenses @	4.75	270.75
655	Class 1D Res. Trappers Licenses @	4.75	2,111.25
1	Class 2-D Non-Res. Trappers Licenses @	23.75	23.75
411	Re-shipping Permits @	.40	164.40
15	Selling & Shipping Permits @	10.00	150.00
26	Taxidermist Licenses @	10.00	260.00
6	Private Pond Permits @	10.00	60.00
64,040			\$126,619.20

## EXHIBIT "D"

Fish and game licenses of the year 1922 charged to the department, together with actual number reported sold, revenue for which was received in 1922, 1923 and 1924, total licenses returned for credit and amount outstanding as shown by ledger accounts to balance.

	Number	Amount
Licenses charged to department	122,692	\$451,710.60
Licenses reported sold	75,855	\$152,040.95
Licenses returned to Auditor for credit	44,944	296,230.50
Licenses outstanding (ledger balances)	1,893	3,439.15
	122,692	\$451,710.60

## EXHIBIT "E"

Fish and game licenses of the year 1923 charged to department, together with actual number reported sold, revenue for which was received in 1923 and 1924, total licenses returned for credit and amount outstanding as shown by ledger balances.

	Number	Amount
Licenses charged to department	117,691	\$356,383.80
Licenses reported sold	72,479	\$142,290.45
Licenses returned to Auditor for credit	44,809	213,315.80
Licenses outstanding (ledger balances)	403	776.55
	117,691	\$356,383.80

## EXHIBIT "F"

Total fish and game licenses of the year 1924 charged to department, together with actual number sold to December 31, 1924, total licenses returned for credit and the total licenses in field and vault to balance account.

1924 Licenses Charged to Department		
Number	Class	Amount
89,995	Class 1 Res. F. & G. Licenses @	1.80 \$161,991.00
1,500	Class 2-A Non-Res. F. & G. Licenses @	23.75 35,625.00
2,500	Class 2-B Non-Res. Bird Licenses @	4.75 11,875.00
11,000	Class 2-C Non-Res. Fish Licenses @	2.70 29,700.00



500	Class 3-A Alien F. & G. Licenses @	47.50	23,750.00
1,000	Class 3-B Alien Fish Licenses @	9.50	9,500.00
1,000	Class 3-C Alien Gun Licenses @	4.75	4,750.00
4,999	Class 1-D Res. Trappers Licenses @	4.75	23,745.25
500	Class 2-D Non-Res. Trappers Licenses @	23.75	11,875.00
500	Class 3-D Alien Trappers Licenses @	47.50	23,750.00
3,000	Re-shipping Permits @	.40	1,200.00
50	Selling & Shipping Permits @	10.00	500.00
50	Private Pond Permits @	10.00	500.00
50	Taxidermist Licenses @	10.00	500.00
116,644			\$339,361.25

## 1924 Licenses Sold

Number	Class	Amount	
61,624	Class 1 Res. F. & G. Licenses @	1.80	\$110,923.20
95	Class 2-A Non-Res. F. & G. Licenses @	23.75	2,256.25
793	Class 2-B Non-Res. Bird Licenses @	4.75	3,766.75
5,343	Class 2-C Non-Res. Fish Licenses @	2.70	14,426.10
82	Class 3-B Alien Bird Licenses @	9.50	779.00
33	Class 3-C Alien Gun Licenses @	4.75	156.75
767	Class 1-D Res. Trappers Licenses @	4.75	3,643.25
1	Class 2-D Non-Res. Trappers Licenses @	23.75	23.75
589	Re-shipping Permits @	.40	235.60
29	Selling & Shipping Permits @	10.00	200.00
19	Taxidermist Licenses @	10.00	190.00
8	Private Pond Permits @	10.00	80.00
69,374			\$136,630.65

## 1924 LICENSES RETURNED FOR CREDIT

Number	Class	Amount
981	Class 1 Res. F. & G. Licenses @	1.80 \$ 1,765.80
77	Class 2-A Non-Res. F. & G. Licenses @	23.75 1,828.75
110	Class 2-B Non-Res. Bird Licenses @	4.75 522.50
309	Class 2-C Non-Res. Fish Licenses @	2.70 834.30
60	Class 3-A Alien F. & G. Licenses @	47.50 2,850.00
20	Class 3-B Alien Fish Licenses @	9.50 285.00
205	Class 3-C Alien Gun Licenses @	4.75 973.75
160	Class 1-D Res. Trappers Licenses @	4.75 760.00

20	Class 2-D Non-Res. Trappers Licenses @	23.75	475.00
20	Class 3-D Alien Trappers Licenses @	47.50	950.00
67	Re-shipping Permits @	.40	26.80
2,039			\$ 11,271.90

## 1924 Licenses in Field (Ledger Balances)

Number	Class	Amount
22,660	Class 1 Res. F. & G. Licenses @	1.80 \$ 40,788.00
778	Class 2-A Non-Res. F. & G. Licenses @	23.75 18,477.50
1,567	Class 2-B Non-Res. Bird Licenses @	4.75 7,443.25
4,208	Class 2-C Non-Res. Fish Licenses @	2.70 11,361.60
150	Class 3-A Alien F. & G. Licenses @	47.50 7,125.00
508	Class 3-B Alien Fish Licenses @	9.50 4,826.00
422	Class 3-C Alien Gun Licenses @	4.75 2,004.50
2,352	Class 1-D Res. Trappers Licenses @	4.75 11,172.00
229	Class 2-D Non-Res. Trappers Licenses @	23.75 5,438.75
70	Class 3-D Alien Trappers Licenses @	47.50 3,325.00
1,744	Re-shipping Permits @	.40 697.60
34,638		\$112,659.20

## 1924 Licenses in Vault

Number	Class	Amount
4,730	Class 1 Res. F. & G. Licenses @	1.80 \$ 8,514.00
550	Class 2-A Non-Res. F. & G. Licenses @	23.75 13,062.50
30	Class 2-B Non-Res. Bird Licenses @	4.75 142.50
1,140	Class 2-C Non-Res. Fish Licenses @	2.70 3,078.00
290	Class 3-A Alien F. & G. Licenses @	47.50 13,775.00
380	Class 3-B Alien Fish Licenses @	9.50 3,610.00
340	Class 3-C Alien Gun Licenses @	4.75 1,615.00
1,720	Class 1-D Res. Trappers Licenses @	4.75 8,170.00
250	Class 2-D Non-Res. Trappers Licenses @	23.75 5,937.50
410	Class 3-D Alien Trappers Licenses @	47.50 19,475.00
600	Re-shipping Permits @	.40 240.00
30	Selling & Shipping Permits @	10.00 300.00
31	Taxidermist Licenses @	10.00 310.00
42	Private Pond Permits @	10.00 420.00
10,543		\$ 78,649.50

## RECONCILIATION

Fish and Game Licenses of Year 1924 charged to Department (all classes)	Number	Amount
Total 1924 Licenses sold to December 31st	116,644	\$339,261.25
Total 1924 Licenses returned for credit	69,374	\$136,680.65
Total 1924 licenses in field (ledger balances)	2,039	11,271.90
Total 1924 licenses in vault	34,688	112,659.20
	10,543	78,649.50
	116,644	\$339,261.25

**REPORTS OF ARRESTS, CONVICTIONS, AND FINES FOR VIOLATIONS OF THE FISH AND GAME LAWS, 1923.**

Name	Offense	Court Decision	Fine
August Donner	Possession of muskrats out of season	.....	25.00
George A. Jones	Shooting pheasants out of season	.....	25.00
Kenneth Jennings	Trapping muskrats without license	.....	25.00
Clair Jennings	Trapping muskrats without license	.....	12.50
John Walters	Shooting Pheasants out of season	.....	25.00
George Mattesen	Unlawful possession of muskrat hides	.....	25.00
R. I. Gardner	Removing traps of license trapper	.....	25.00
Lawrence Christensen	Fishing without a license	.....	25.00
H. R. Price	Fishing without license	.....	25.00
O. W. Blackman	Deer meat in possession unlawfully	.....	25.00
George Parker	Destroying rat houses	.....	25.00
C. B. Harrington	Trapping out of season	.....	25.00
F. F. Bower	Carrying uncased shot gun in field	.....	25.00
S. C. Holloway	Hunting without license	.....	25.00
C. C. Westfall	Trapping beaver unlawfully	.....	25.00
C. M. Perry	Attempting to shoot migratory birds after sundown	.....	25.00
R. W. Hamilton	Attempting to shoot migratory birds after sundown	.....	25.00
H. B. McMillan	Attempting to shoot migratory birds after sundown	.....	25.00
J. D. Gearhart	Hunting without a license	.....	25.00
Chas. Eggleston	Carrying uncased shot gun without a license	.....	25.00
Ralph Keeney	Shooting ducks after sundown	.....	25.00
E. E. Montague	Destroying muskrat houses	.....	25.00
W. C. Lienbee	Beaver hides in possession unlawfully	.....	25.00
J. W. Kelly	Trapping muskrats out of season	.....	30.00
John Kelly, Jr.	Beaver hides in possession without a permit	.....	75.00
Oliver Blume	Killing deer out of season	.....	50.00
Dan Lyman	Snagging trout	.....	25.00
Leo Gwinn	Killing deer out of season	.....	25.00

Name	Offense	Court Decision	Fine
James Bonkhand	Pheasant in possession out of season	.....	28.00
Harley Laudalo	Killing deer in closed territory	.....Convicted	25.00
George Haynes	Fishing without a license	.....Convicted	25.00
Fritz Schearly	Illegal shipment of beaver hides	.....Convicted	25.00
Louis Des Rufeseaux	Unlawful possession of beaver hides	.....Convicted	150.00
Wm. Miller	Trapping muskrats out of season	.....Convicted	25.00
Willie Raumnusen	Hunting without a license	.....Convicted	25.00
C. L. Miller	Killing deer out of season	.....Convicted	25.00
C. W. Sougrava	Fishing within 300 ft. of dam	.....Convicted	100.00
Harry Angstadt	Fishing within 300 ft. of dam	.....Convicted	25.00
John M. Anchor	Having deer in possession	.....Convicted	25.00
E. J. Goodrich	Destruction of fish	.....Convicted	100.00
Tony Losada	Shooting at pheasants without a license	.....Convicted	25.00
W. E. McIntyre	Shooting wild ducks out of season without a license	.....Convicted	25.00
A. G. Shoemaker	Unlawful possession of wild ducks	.....Convicted	50.00
Albert Shoemaker	Practicing taxidermy without a license	.....Convicted	25.00
Earl Hudson	Trapping without a license	.....Convicted	25.00
Eugene Hudson	Fishing in closed season	.....Convicted	25.00
Ed Pierce	Fishing in closed season	.....Case dismissed.	
Olof Edin	Damaging muskrat houses	.....Case dismissed.	
M. O. Winkle	Trapping muskrats in closed season	.....Paroled.	
Leo Hudson	Having beaver hides in his possession	.....Fine suspended.	
F. W. Snow	Hunting in closed season	.....Case dismissed.	
Leo Zimmerman	Having deer meat in possession	.....Convicted	25.00
Frank Hewitt	Killing deer out of season	.....Convicted	25.00
And Hood	Having deer out of season	.....Convicted	30.00
C. Floyd	Fishing in closed season	.....Convicted	50.00
Leonard Floyd	Seining fish	.....Convicted	100.00
W. Floyd	Seining fish	.....Case dismissed.	
Cal Wolfe	Seining fish	.....Case dismissed.	
H. R. Ackley	Fishing in closed stream	.....Case dismissed.	
	Fishing within 300 ft. of dam	.....Case dismissed.	

## Name

Name	Offense	Court Decision	Fine
Simon Smith	Fishing within 300 ft. of dam	.....Committed to jail.	
C. C. Rouse	Fishing within 300 ft. of dam	.....Case dismissed.	
Jake Hollman	Spearing fish	.....Convicted	25.00
Elmer Hollman	Spearing fish	.....Convicted	25.00
Walter and Mrs. Harrick	Fishing in closed season	.....Convicted	25.00
Leslie Herrick	Fishing in closed season	.....Convicted	25.00
R. P. and Mrs. Saddler	Fishing in closed season	.....Convicted	25.00
J. Chilcott	Shooting ducks out of season	.....Convicted	25.00
Dennis Covert	Unlawful possession of beaver hides	.....Fine suspended.	
John Bird	Fishing without a license	.....Committed to jail.	
Sam Carpenter	Trapping without a license	.....Fine suspended.	
A. R. and Arnold Kofoed	Trapping without a license	.....Fine remitted.	
Bud Davis	Trapping without a license	.....Fine remitted.	
Albert Johnson	Unlawful possession of beaver hides	.....Case dismissed.	
Fennan Olson	Fishing without a license	.....Convicted	25.00
James Hanson	Fishing without a license	.....Convicted	25.00
Joe Ellenwood	Letting sawdust in Weiser River	.....Convicted	25.00
E. M. Kennedy	Fishing within 300 ft. of dam	.....Convicted	25.00
Harold Crawford	Fishing below Stanton crossing	.....Convicted	25.00
John Soumer	Violation fish and game law	.....Convicted	5.00
F. M. Beckett	Unlawful possession of beaver hides	.....Convicted	25.00
W. J. Scott	Fishing without a license	.....Convicted	25.00
Carson Taylor	Fishing without a license	.....Convicted	25.00
Eston Hector	Fishing without a license	.....Convicted	25.00
Alvin Lorenzli	Fishing in closed waters	.....Convicted	25.00
Isaac Glen	Fishing without license	.....Convicted	25.00
Leo H. Simons	Dynamiting fish	.....Convicted	25.00
A. B. Carter	Fishing unlawfully	.....Found not guilty.	
Howard Stevens	Fishing in closed stream	.....Convicted	5.00
O. J. Hansen	Shooting grouse out of season	.....Convicted	25.00
Glove Saults	Fishing without a license	.....Convicted	25.00
A. H. Quintian	Fishing without a license	.....Convicted	25.00
Roland Ellsworth	Fishing without a license	.....Convicted	25.00

Name	Offense	Court Decision	Fine
Sterlo Keogard	Seining fish in Payette Lakes	Convicted	25.00
Augustin Arnaga	Killing grouse unlawfully	Convicted	5.00
R. A. Johnson	Fishing without a license	Convicted	25.00
F. A. Springstead	Seining fish in Payette Lakes	Convicted	25.00
Pete Huff	Shooting grouse out of season	Convicted	25.00
J. G. O'Neil	Having fish under 6 inches in possession	Fine remitted.	
A. J. Hall	Fishing without a license	Case dismissed.	
George Aoki	Fishing without a license	Case dismissed.	
Leonard Beckstrand	Fishing without a license	Case dismissed.	
Cliffe Cutler	Hunting without a license	Convicted	25.00
Ray Chugg	Hunting without a license	Convicted	25.00
Sidney Call	Hunting without a license	Convicted	25.00
Ensign Call	Hunting without a license	Convicted	25.00
A. R. Roberts	Fishing without a license	Convicted	50.00
Ivan Reese	Fishing without a license	Convicted	25.00
Edwin McCaughy	Fishing without a license	Convicted	25.00
R. Butler	Fishing without a license	Convicted	25.00
Howard Humphreys	Fishing with non-resident license and having fish under 6 inches in his possession	Convicted	25.00
Byron Nelson	Shooting grouse out of season.	Convicted	25.00
John Gillum	Having fish under 6 inches in his possession.	Convicted	25.00
Montaine Jordan	Fishing within 300 ft. of dam	Convicted	25.00
G. W. Bodge	Hunting without a license	Convicted	25.00
James Briggs	Unlawful possession of fish	Convicted	25.00
Geo. Latham	Unlawful possession of fish	Convicted	25.00
U. S. Shebia	Seining fish	Convicted	10.00
A. A. Decker	Fishing from horseback	Convicted	25.00
Ignacio Valds	Fishing without a license	Convicted	50.00
Fornaturo Quinteno	Fishing without a license	Convicted	5.00
James M. Rogers	Killing ducks out of season	Convicted	25.00
Pat Young	Having sage hens in his possession during closed season	Convicted	25.00
Marlon Skinner	Trapping rats out of season without a license	Convicted	25.00

Defendant left country.  
Fine suspended.

Name	Offense	Court Decision	Fine
Leroy Harris	Killing Moose	Case dismissed.	
C. W. Secord	Hunting without a license	Fine remitted.	
F. A. Webb	Hunting Pheasants in closed season	Case dismissed.	
Louis Graves	Shooting after sunset	Case dismissed.	
A. T. Kimes	Fishing in closed waters	Fine suspended.	
E. A. Griffin	Killing Pheasants in closed season	Case dismissed.	
Guy Utley	Fishing without a license	Case dismissed.	
Ed Mayne	Attempting to kill Moose	Case dismissed.	
Nuel Clark	Disturbing traps of license trappers	Fine remitted.	
M. Vanderstuy	Fishing without a license	Jail sentence.	
James Nalley	Fishing in closed season without a license	Jail sentence.	
Charles Duper	Hunting in closed season without a license	Case dismissed.	
Alexh're Dupre	Hunting after sunset	Fine suspended.	
E. E. Brooks	Hunting after sunset	Case dismissed.	
Fred Lavasey	Hunting after sunset	Case dismissed.	
Willis Blunding	Fishing without a license	Fine remitted.	
Clyde Fowler	Hunting after sunset	Case dismissed.	
Francis Patent	Fishing without a license	Committed to jail.	
R. S. Galbraith	Shooting ducks after sunset	Convicted	25.00
Quinter Harris	Shooting ducks after sunset	Convicted	10.00
Blanche Harris	Shooting ducks after sunset	Convicted	5.00
Ed Crossland	Hunting without a license	Convicted	25.00
F. G. Waldrapt	Shooting ducks after sunset	Convicted	25.00
Wendell Pope	Hunting without a license	Convicted	25.00
Paul A. Roberts	Hunting ducks after sundown	Convicted	25.00
W. N. Brooks	Shooting ducks after sundown	Convicted	25.00
James Jones	Unlawful possession of fish	Convicted	25.00
Chet Caskill	Possession of wood ducks	Convicted	30.00
Cyril Veno	Shooting after sunset	Convicted	25.00
J. H. Nell	Killing of one Bittern	Convicted	25.00
H. Leivnitz	Hunting without a license	Convicted	25.00
James Crockett	Hunting without a license	Convicted	25.00
John Jackson	Shooting at ducks after sundown	Convicted	25.00

Name	Offense	Court Decision	Fine
Ell Huffman	Shooting at ducks after sundown	Convicted	25.00
Ray Jones	Hunting ducks after sundown	Convicted	25.00
C. J. Peters	Hunting without a license	Convicted	25.00
R. G. Cole	Shooting Quail in closed season	Fine remitted.	
James Newman	Attempting to shoot ducks after sundown	Case dismissed.	
J. S. Cooper	Shooting ducks after sundown	Defendant died.	
Fred Acosta	Hunting without a license	Convicted	25.00
Dan Cowling	Killing grouse unlawfully	Convicted	25.00
Ernest Burrie	Possession of game bird skins without a permit	Convicted	20.00
M. G. Ramsay	Killing sage hens during closed season	Convicted	25.00
J. L. Keener	Hunting without a license	Convicted	25.00
C. R. Herrington	Trapping out of season	Convicted	25.00
D. E. Shumway	Shooting at Pheasants in closed season	Convicted	12.50
Lester Smith	Hunting game birds in Game Preserve	Convicted	30.00
V. E. Nordberg	Hunting without a license	Convicted	25.00
Frank Thatcher	Unlawful possession of Pheasants	Convicted	25.00
Powell Salmon	Hunting without a license	Convicted	25.00
W. H. Bevercomb	Shooting grouse out of season	Convicted	25.00
Earnest Haltiner	Killing Chinese pheasants out of season	Convicted	25.00
Reiph Perkins	Killing Chinese pheasants out of season	Convicted	25.00
J. A. Davenport	Having fish under 6 inches in his possession	Convicted	25.00
Martin Platts	Having fish under 6 inches in his possession	Convicted	25.00
T. E. and E. E. Jones	Having fish under 6 inches in his possession	Convicted	25.00
Ole Hansen	Unlawful possession of fish	Convicted	50.00
Leo Townsend	Killing Pheasants out of season	Convicted	25.00
H. R. Price	Killing Pheasants out of season	Convicted	25.00
Dall Hutchinson	Having fish under 6 inches in his possession	Convicted	40.00
Fred F. Snyder	Shooting grouse out of season	Convicted	25.00
P. E. Clay	Shooting grouse out of season	Convicted	25.00
J. E. Pettet	Shooting grouse out of season	Convicted	25.00
H. Miller	Shooting grouse out of season	Convicted	25.00
H. L. Taylor	Shooting grouse out of season	Convicted	25.00
W. J. Gooding	Having trout under 6 inches in possession	Convicted	25.00
	Having Sage Hens in his possession unlawfully	Convicted	100.00

Name	Offense	Court Decision	Fine
J. L. Driscoll	Having Sage Hens in his possession unlawfully	Convicted	100.00
Ray Copenhagen	Unlawful possession of fish	Convicted	25.00
A. H. Woody	Shooting grouse out of season	Convicted	25.00
H. I. Chestnut	Fishing in closed stream	Convicted	25.00
Edward Pinter	Fishing out of season	Convicted	25.00
R. G. Spaeth	Fishing within 300 ft. of dam	Convicted	25.00
C. A. Pitman	Fishing within 300 ft. of dam	Convicted	25.00
Nathaniel Todd	Fishing within 300 ft. of dam	Convicted	25.00
John Doe	Unlawful fishing	Convicted	25.00
Sam Reid	Fishing within 300 ft. of dam	Convicted	25.00
Hugh Ackley	Having fish as part of hotel menu	Convicted	25.00
J. C. Scott	Fishing within 300 ft. of dam	Convicted	25.00
K. L. Hela Kell	Fishing without license	Convicted	25.00
G. P. Hensley	Fishing without license	Convicted	25.00
Owen Younkln	Fishing in closed waters	Convicted	25.00
Mrs. Owen Younkln	Fishing in closed waters	Convicted	25.00
Emma Kunkel	Having grouse in possession out of season	Case dismissed.	
H. J. Pierpont	Fishing without license	Fine suspended	
Otto P. Schlotchor	Fishing without license	Fine suspended	
Burden A. Wasm	Fishing within 300 ft. of dam	Case dismissed.	
Geo. Freedman	Fishing within 300 ft. of dam	Case dismissed.	
Hugh Rowland	Fishing within 300 ft. of dam	Case dismissed.	
Geo. Rupp	Shooting ducks before daylight	Case dismissed.	
F. Sharley	Shooting ducks before daylight	Case dismissed.	
J. D. Dupp	Shooting ducks before daylight	Case dismissed.	
John Dupp	Shooting ducks before daylight	Case dismissed.	
J. Rumbidowx	Shooting ducks before daylight	Case dismissed.	
Arthur A. Stephens	Killing grouse out of season	Convicted	25.00
W. L. Short	Killing grouse out of season	Convicted	25.00
P. J. Pringol	Shooting sage hens out of season	Convicted	25.00
William Richards	Fishing within 300 ft. of dam	Convicted	25.00
James Patterson	Fishing in closed stream	Convicted	25.00
John Baldr	Fishing in closed stream	Convicted	25.00

Name	Offense	Court Decision	Fine
Lawrence Bennett	Fishing in closed stream	Convicted	25.00
Oscar Whitbey	Fishing in closed stream	Convicted	25.00
M. H. Admanson	Fishing without license	Convicted	25.00
Reno Cahoon	Fishing without license	Convicted	25.00
Joe Hartman	Fishing without license	Convicted	25.00
O. A. Koshick	Hunting without license	Convicted	25.00
Lenoard Hall	Shooting game birds out of season	Convicted	25.00
Paul Heitstuman	Fishing without license	Convicted	100.00
H. L. Thomson	Having fish under 6 inches in his possession	Convicted	25.00
Mrs. H. L. Thomason	Having fish under 6 inches in his possession	Convicted	25.00
L. W. Peterson	Having fish under 6 inches in his possession	Convicted	25.00
Mrs. L. W. Peterson	Having fish under 6 inches in her possession	Convicted	25.00
P. G. Feick	Shagging fish	Convicted	25.00
Lawrence Lashbrook	Killing sage hens out of season	Convicted	25.00
G. E. Smith	Unlawful possession of grouse	Convicted	25.00
S. J. Norrington	Having fish under 6 inches in his possession	Convicted	25.00
J. G. Matthews	Unlawful possession of beaver hides	Convicted	25.00
J. R. McConnell	Killing Pheasants out of season	Convicted	25.00
Dr. Getzloff	Destruction of game	Convicted	25.00
G. T. Hawley	Carrying uncase rifle in the field	Convicted	25.00
K. R. Lavins	Carrying uncase gun without a license	Convicted	15.00
S. W. Raly	Hunting deer without a license	Convicted	15.00
A. P. Heege	Hunting deer with dogs	Convicted	25.00
F. W. Davis	Fishing in closed waters	Convicted	200.00
Ed Morris	Having deer in possession without license coupon	Convicted	25.00
Virgil Minear	Having deer in possession without license coupon	Convicted	25.00
H. M. Repass	Hunting without a license	Convicted	25.00
H. A. Ohlenschien	Hunting Pheasants in closed season	Convicted	25.00
Francisco Galvan	Fishing without a license	Convicted	25.00
Victor Gabica	Unlawful shipment of Pheasants	Convicted	10.00
Percy A. Kelly	Hunting without a license	Convicted	25.00
Fidel Ramirez	Fishing without a license	Convicted	25.00
Norval Donoho	Shagging whitefish	Convicted	25.00
		Case dismissed.	

Name	Offense	Court Decision	Fine
Vern Land	Snagging whitefish	Case dismissed.	35.00
Charles Vance	Shooting ducks after dark	Fine remitted.	35.00
William Moran	Trapping without a license	Case dismissed.	25.00
Leo Nancolas	Shooting ducks after sunset	Case dismissed.	25.00
Ralph Smith	Shooting ducks after sunset	Case dismissed.	25.00
Joseph Moses	Killing deer without a license	Committed to jail.	25.00
Simon Francis	Killing deer without a license	Committed to jail.	25.00
Wilford Thorpe	Hunting without a license	Fine remitted by court.	25.00
E. Sponsler	Having untagged deer in his possession	Defendant was a minor.	25.00
		Case dismissed.	
E. C. Dethlefs	Killing Chinese Pheasants out of season.	Convicted	35.00
T. J. Peterson	Killing Chinese Pheasants out of season.	Convicted	35.00
H. L. Hammond	Shooting ducks after sunset	Convicted	25.00
Glen Brown	Shooting ducks after sunset	Convicted	25.00
Ivan Rlie	Shooting ducks after sunset	Convicted	25.00
H. C. Malberg	Shooting ducks after sunset	Convicted	25.00
William Nancolas	Shooting ducks after sunset	Convicted	25.00
C. H. Wright	Unlawful killing of one Mink	Convicted	25.00
James McCamish	Unlawful trapping of fur bearing animals	Convicted	25.00
Fred Kaster	Fishing without a license	Convicted	25.00
J. W. Treese	Possession of untagged deer	Convicted	25.00
Woodson Parker	Killing sage hens out of season	Convicted	25.00
James Whitmore	Killing sage hens out of season	Convicted	25.00
Tom George	Fishing without a license	Convicted	25.00
Frank Baba	Offering wild ducks for sale	Convicted	25.00
Oscar Cartis	Having grouse in his possession unlawfully	Convicted	25.00
Dick Hammond	Unlawful possession of beaver hides	Convicted	25.00
F. H. Skeels	Shooting ducks after sundown	Convicted	25.00
J. L. Ennis	Shooting ducks after sundown	Convicted	25.00
Paul Swaune	Unlawful possession of fish	Convicted	7.00
Milton H. Sears	Having ducks in his possession without a non-residence license	Convicted	25.00
Curtis B Hill	Killing ducks after sundown	Convicted	25.00

Name	Offense	Court Decision	Fine
J. E. Garfield	Shooting Pheasants out of season	Convicted	25.00
V. C. Frazier	Shooting Pheasants out of season	Convicted	25.00
Albert Wilson	Shooting Pheasants out of season	Convicted	14.75
Frank Melcher	Attempting to sell deer hides	Convicted	25.00
James Pardoe	Hunting without a license	Convicted	15.00
Frank Harges	Trapping without a license	Convicted	25.00
<b>TOTAL</b>			<b>\$6,199.75</b>
Total number of arrests			291
Total number of fines			217
Total revenue therefrom			<b>\$6,199.75</b>

### REPORTS OF ARRESTS, CONVICTIONS, AND FINES FOR VIOLATIONS OF THE FISH AND GAME LAWS, 1924.

Name	Offense	Court Decision	Fine
Sidney Knight	Shooting ducks after sunset	Sentence suspended	
Harold Skeeh	Shooting ducks after sunset	Sentence suspended	
C. N. Felix	Killing ducks in closed season	Not guilty	
Doris Jensen	Having freshly killed deer head in possession out of season	Not guilty	
R. H. Cronn	Hunting without a non-resident license	Not guilty	
A. M. Frazier	Shooting ducks out of season	Sentence suspended	
John L. Browner	Shooting ducks after sundown	Convicted	25.00
Frank Grievie	Shooting ducks after dark	Convicted	25.00
Julius Hagman	Possession of muskrat hides without a trappers licenses	Not guilty	
V. H. Buster	Fishing in closed stream	Committed to jail	
James Hitchie	Selling whitefish without a permit	Sentence suspended	10.00
John Reeves	Failed to report fur bearing animals caught	Convicted	25.00
R. Ato	Fishing without a license	Convicted	
Jay Carlin	Possession of muskrat without a trappers license	Convicted	25.00
F. R. Peart	Killing pheasants in closed county	Convicted	25.00
Walter Bean	Hunting without a license	Convicted	25.00
Chester Cushing	Shooting grouse out of season	Convicted	25.00
Howard Itawle	Trapping without a license	Case dismissed	
Dwelin Lightner	Fishing through the ice	Not guilty	
James Elsser	Trapping without a license	Case dismissed	
C. A. Green	Trapping without a license	Case dismissed	
G. W. Gresham	Trapping without a license	Case dismissed	
John Leslie	Trapping in closed season and fishing in closed stream	Case dismissed on account of age	25.00
B. M. Campbell	Possession of beaver hides	Convicted	25.00
Charles Mandy	Illegal possession of mink	Convicted	25.00
J. A. McDowall	Shooting pheasants out of season	Convicted	25.00

Name	Offense	Court Decision	Fine
Harris M. Moss	Shooting ducks after sundown	Convicted	24.75
F. A. Edwards	Fishing through the ice	Convicted	25.00
E. M. Cole	Possession of wild geese unlawfully	Convicted	25.00
Frank Pollock	Hunting ducks without a license	Convicted	50.00
Ben Howland	Fishing without a license	Convicted	50.00
Jack Saarl	Possession of fur bearing animals without a permit	Convicted	25.00
A. I. Myers	Possession and shipment of beaver hides	Convicted	35.00
Nick Ihly	Unlawful possession of wild geese	Convicted	15.00
E. S. See	Illegal possession of native pheasants and quail	Convicted	25.00
Thomas Watson	Fishing without a license	Convicted	25.00
Ghas. Stine	Fishing without a license	Convicted	25.00
Pocatello Cold Storage	Fishing in closed waters	Fine remitted	25.00
Harvey Anderson	Having migratory birds in cold storage during closed season	Convicted	25.00
Glenn Hill	Fishing without a license	Convicted	50.00
A. L. Bell	Trapping without a license	Convicted	25.00
Mr. Taylor	Possession of beaver hides	Convicted	25.00
Heber Turner	Unlawful possession of fish	Convicted	25.00
O. R. Garrett	Attempting to trap beaver	Convicted	25.00
H. L. McHann	Unlawful possession of fish	Convicted	25.00
H. Wilford Chandler	Unlawful possession of fish	Convicted	21.00
Lennis Engle	Unlawful possession of fish	Convicted	25.00
Edgar Pratt	Fishing through the ice	Convicted	25.00
Shelley Howard	Killing grouse out of season	Convicted	25.00
Layton Piercy	Dynamiting fish	Convicted	25.00
Virgil Eller	Dynamiting fish	Sentence suspended.	25.00
Eldin Nelson	Fishing in closed season	Sentence suspended.	
Merlin Nelson	Fishing during closed season	Sentence suspended.	
Elmo Jones	Fishing during closed season	No fine because of age.	
Henry Wade	Fishing during closed season	No fine because of age.	
	Fishing out of season	Convicted	25.00
		Convicted	25.00

Name	Offense	Court Decision	Fine
Wallace Faulkner	Killing wild geese out of season	Convicted	40.00
Ino Kubota (Jip)	Fishing without a license	Convicted	25.00
E. F. Langren	Fishing in closed stream	Convicted	25.00
Louis Reidhaar	Unlawfully killing sea gull	Convicted	25.00
Claud Parr	Trapping without a license	Convicted	25.00
L. N. Hoss	Violation of game law	Convicted	25.00
B. J. Anderson	Fishing in closed stream	Convicted	25.00
C. I. Fox	Fishing in closed stream	Convicted	25.00
E. A. Miller	Fishing in closed stream	Convicted	5.00
Milo Rhodes	Trapping without a license	Convicted	15.00
Lawrence Hooper	Attempting to spear fish	Convicted	15.00
Verney Perry	Attempting to spear fish	Convicted	25.00
Geo. A. Anderson	Shooting ducks out of season	Convicted	25.00
John Armstrong	Shooting ducks out of season	Convicted	25.00
Albert Lockhart	Shooting ducks out of season	Convicted	25.00
V. S. Martin	Letting sawdust in stream	Convicted	50.00
Monroe Shenkle	Possession of wild ducks in closed season	Fine suspended by court.	
Lamoine Orchar	Shooting trout	Dismissed because of age.	
Earl Atkinson	Catching trout under 6"	Not guilty	
Ed Wilson	Fishing without a license	Convicted	25.00
Wm. Hines	Fishing without a license	Convicted	25.00
Ed Hanks	Fishing without a license	Convicted	25.00
Jeddie Gillespie	Fishing in closed stream	Convicted	25.00
D. C. Clark	Fishing without a license	Convicted	25.00
Tony Valentine	Hunting without a license	Convicted	25.00
T. E. Bonett	Fishing without a license	Convicted	25.00
Wesley Walker	Fishing without a license	Convicted	25.00
A. T. Hildred	Fishing in closed stream	Convicted	25.00
L. C. Hunter	Fishing without a license	Convicted	25.00
John Gaver	Fishing without a license	Convicted	17.00
L. P. Tonhor	Having fish under 6" in his possession	Convicted	12.50
Charles Lee	Possession of fish under 6"	Convicted	12.50
Luther Johnson	Having fish under 6" in his possession	Convicted	12.50



Name	Offense	Court Decision	Fine
H. I. Slusher	Fishing without a license	Convicted	25.00
Leonard Larsen	Fishing without a license	Convicted	10.00
Dwain Anderson	Fishing without a license	Convicted	25.00
E. S. Moore	Snagging whitefish	Convicted	10.00
Dell L. Cutler	Fishing without a license	Convicted	25.00
A. Palson	Fishing in closed waters	Convicted	5.00
Theo. Mavros	Fishing in closed waters	Convicted	5.00
W. C. Robertson	Spearing trout	Convicted	50.00
Frank Kyle	Possession of trout under 6"	Convicted	25.00
Collis Piper	Hunting without a license	Convicted	25.00
Roy Wade	Possession of trout under 6"	Fine remitted	
London J. Brown	Fishing without a license	Fine remitted	
H. V. Logan	Fishing without a license	Convicted	25.00
W. B. Davis	Fishing without a license	Convicted	12.50
D. C. Brett	Possession of fish under 6"	Convicted	25.00
Wm. Roche	Fishing without a license	Convicted	25.00
Robert Watson	Fishing without a license	Convicted	25.00
Z. D. Barker	Fishing within 300 ft. of dam	Convicted	25.00
Bert Badley	Fishing within 300 ft. of dam	Convicted	25.00
Edward Hengen	Fishing in closed waters	Convicted	25.00
Alfred Quincey	Trapping without a license	Convicted	25.00
J. W. Dresser	Fishing without a license	Convicted	25.00
F. N. Buffington	Fishing without a license	Convicted	25.00
E. A. Day	Possession of fish under 6"	Convicted	25.00
Koichi Kikuchi	Possession of fish under 6"	Convicted	25.00
Ray Fleming	Fishing without a license	Convicted	25.00
Geo. Geoghagan	Fishing without a license	Convicted	25.00
A. W. Paulsen	Fishing without a license	Convicted	25.00
James McCamlish	Possession of trout under 6"	Convicted	25.00
Jerry Murphy	Fishing through the ice	Convicted	25.00
Clerence Wilson	Fishing through the ice	Convicted	25.00
M. Leonard	Fishing without a license	Convicted	25.00

Name	Offense	Court Decision	Fine
James Contos	Fishing within 300 ft. of dam	Convicted	25.00
Jesus Fosseo	Fishing without a license	Convicted	25.00
A. F. Grace	Trapping muskrats out of season	Convicted	25.00
Roland Meltzke	Unlawful possession of fire arms	Fine suspended	
Louis Payne	Carrying gun under age	Fine suspended	
Ben Adolf	Hunting sage hens in closed season	Fine suspended	
Harley Willett	Fishing without a license	Committed to jail.	
Albert Grasser	Killing pheasants out of season	Defendant was a minor fine was paid into the school fund.	
Ben Brown	Possession of venison out of season	Committed to jail.	
Chet Brown	Possession of venison out of season	Committed to jail.	
Louis Peppinger	Possession of venison out of season	Committed to jail.	
Ernest Parker	Exploding dynamite in stream	No fine imposed because of juvenile.	
Edwin Parker	Exploding dynamite in stream	No fine imposed because of juvenile.	
Theodore Gnetting	Fishing in closed waters	Fine remitted by judge.	
William Barker	Unlawful possession of elk meat	Not guilty.	
Abe Gnetting	Fishing in closed waters	Case dismissed.	
Odis Talbot	Killing game birds in closed season	Fine remitted by judge.	25.00
Clifford S. Code	Possession of fish under 6"	Convicted	25.00
Harry Musgrave	Fishing in closed stream	Convicted	25.00
C. B. Chamberlain	Fishing without a license	Convicted	25.00
R. A. Dean	Fishing without a license	Convicted	25.00
Ralph Smalley	Unlawful killing of sage hens	Convicted	25.00
Alex Seefird	Fishing without a license	Convicted	25.00
Christ Oswald	Unlawful possession of fire arms	Convicted	25.00
A. H. Penbody	Unlawful possession of blue grouse	Convicted	25.00
H. A. Bishop	Unlawful possession of blue grouse	Convicted	25.00
T. J. Ashby	Possession of game without a license	Convicted	50.00
J. G. Sampson	Possession of game without a license	Convicted	50.00
E. R. Fontz	Possession of game without a license	Convicted	50.00

Name	Offense	Court Decis'on.	Fine.
John Brown	Hunting without a license	Convicted	25.00
Howard Moore	Killing grouse out of season	Convicted	25.00
John Brown	Possession of sage hens out of season	Convicted	25.00
W. C. Cato	Killing grouse out of season	Convicted	25.00
T. H. Nielson	Killing grouse out of season	Convicted	25.00
R. E. Earley	Killing grouse out of season	Convicted	25.00
Geo. Slingerling	Unlawful possession of grouse	Convicted	25.00
E. C. Head	Unlawful possession of grouse	Convicted	25.00
W. H. Jackson	Unlawful possession of grouse	Convicted	25.00
P. E. Dillon	Unlawful possession of grouse	Convicted	25.00
Leo, Schoolcraft	Unlawful possession of grouse	Convicted	25.00
L. L. Dunham	Unlawful possession of grouse	Convicted	25.00
J. A. Hamner	Unlawful possession of grouse	Convicted	25.00
J. M. McDonald	Unlawful possession of grouse	Convicted	25.00
S. D. Sprittling	Unlawful possession of grouse	Convicted	25.00
Pasco Pacora	Shooting sage hens without a license	Convicted	25.00
August Rupp	Unlawful possession of game birds	Convicted	25.00
Daune Johnson	Fishing without a license	Convicted	25.00
Roy Van Deventer	Fishing near U. S. fish trap	Convicted	25.00
Arthur Johnson	Fishing near U. S. fish trap	Convicted	5.00
Eugene Mathews	Fishing near U. S. fish trap	Convicted	5.00
Albert Collings	Fishing near U. S. fish trap	Convicted	25.00
John Miller	Fishing near U. S. fish trap	Convicted	25.00
Alex Hayes	Killing deer out of season	Case dismissed	25.00
John Anderson	Killing deer out of season	Convicted	25.00
L. P. Carper	Killing deer out of season	Case dismissed	100.00
F. L. Olson	Killing grouse out of season	Case dismissed	100.00
Elliott Doan	Fishing without a license	Convicted	25.00
Geo. Jennings	Shooting sage hens out of season	Convicted	25.00
Frank Jones	Possession of deer in closed season	Convicted	25.00
James Campbell	Fishing without a license	Convicted	25.00
Wm. Munsee	Shooting grouse out of season	Convicted	100.00
J. T. Shea	Shooting ducks out of season	Convicted	5.00
	Unlawful killing of grouse	Convicted	25.00
		Convicted	25.00

Name	Offense	Court Decis'on	Fine
Clarence Mongum	Fishing near U. S. Fish trap	Convicted	25.00
Wm. A. Shipman	Fishing without a license	Fine suspended.	
Chas. M. Bell, Jr.	Permitting sawdust to enter stream	Fine suspended.	
B. D. Slyter	Fishing without a license	30 days in jail and sentence suspended	
John Worneck	Possession of sage hens in closed county	Not guilty	
A. Shinderling	Possession of sage hens in closed county	Not guilty	
Mr. McLain	Possession of sage hens in closed county	Not guilty.	
Fete Marker	Snagging whitefish	Sentence suspended	
Jesse Schaffer	Snagging whitefish within 300 ft. of dam	Sentence suspended	
C. V. Richardson	Snagging whitefish within 300 ft. of dam	Sentence suspended	
F. A. Sanger	Possession of beaver hides	Convicted	100.00
Herbert Austin	Possession of ducks out of season	Convicted	25.00
Howard Powell	Shooting pheasants out of season	Convicted	25.00
John Thibbets	Killing deer out of season	Convicted	100.00
Joe Idoeta	Carrying gun in forest without a license	Convicted	25.00
E. Cammack	Killing pheasants out of season	Convicted	25.00
H. A. Shafer	Killing grouse out of season	Convicted	25.00
E. R. Pierce	Illegal possession of grouse	Convicted	25.00
Glenn Stocks	Shooting grouse out of season	Convicted	25.00
K. S. Take (Jap)	Hunting without a license	Convicted	25.00
G. Uckl (Jap)	Hunting without a license	Convicted	25.00
S. C. Preston	Killing wild ducks out of season	Convicted	25.00
Arthur Anthon	Killing wild ducks out of season	Convicted	25.00
J. D. Adams	Killing wild ducks out of season	Convicted	25.00
Leopold Loughl	Hunting without a license	Convicted	35.00
Charles Miller	Carrying uncased shot gun without a license	Convicted	25.00
C. W. Parke	Fishing without a license	Convicted	5.00
M. H. Landon	Fishing without a license	Convicted	10.00
Louis J. Grath	Fishing without a license	Convicted	10.00
Ray R. Bates	Fishing without a license	Convicted	25.00
James Armstrong	Killing game birds out of season	Convicted	25.00
S. O. Tannahill	Killing game birds out of season	Convicted	25.00

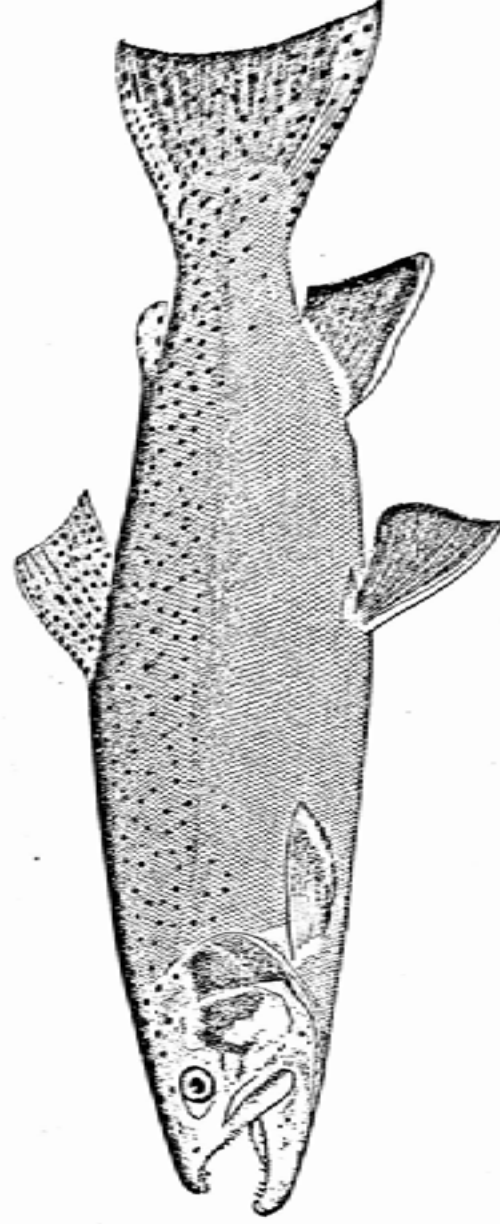
## TENTH BIENNIAL REPORT

Name	Offense	Court Decision	Fine
Elmer Cook	Shooting sage hens out of season	Convicted	25.00
Charles Muns	Shooting fish	Convicted	25.00
H. H. Patchart	Catching fish under 6"	Convicted	25.00
W. Burns	Having fish under 6" in his possession	Convicted	25.00
Clarence Trout	Fishing without a license	Convicted	25.00
V. G. Wits	Killing grouse out of season	Convicted	1.00
B. Neilson	Fishing without a license	Convicted	25.00
Kenneth Dement	Unlawful killing of ducks	Convicted	25.00
Cash Nicks	Unlawful killing of ducks	Convicted	25.00
Geo. Jasper	Killing deer out of season	Convicted	25.00
Sam Keigel	Fishing in closed stream	Convicted	25.00
John Doe Reigiel	Fishing in closed stream	Convicted	25.00
John Soma	Shooting pheasants out of season	Convicted	100.00
A. V. Turk	Shooting pheasants out of season	Convicted	25.00
A. L. Clausing	Having 5 sage hens in his possession	Convicted	25.00
Alfred Ketchum	Trapping muskrats out of season	Committed to jail.	25.00
Kenneth Carey	Shooting pheasants in closed season	Committed to jail.	25.00
Chas. C. Green	Illegal killing of blue grouse	Case dismissed because of age.	25.00
C. W. Lynch	Illegal killing of blue grouse	Convicted	17.00
Brandon Wilcox	Hunting without a license	Convicted	25.00
Jesse F. Samson	Shooting ducks before sunrise	Convicted	25.00
E. G. Nydegger	Unlawful possession of venison	Convicted	25.00
Thomas Bullick	Shooting ducks after sunset	Convicted	50.00
W. Wilferth	Fishing without a license	Convicted	25.00
Earl Seiwright	Hunting and shooting ducks after sunset	Convicted	25.00
Allen Johansen	Killing pheasants out of season	Convicted	1.00
Wendell P. Brown	Killing deer out of season	Convicted	25.00
Geo. Nelson	Fishing without a license	Convicted	25.00
Ralph Bates	Hunting in St. Maries Game Preserve	Convicted	52.00
Ernie McLaughlin	Shooting Hungarian partridges out of season	Convicted	25.00
Ray Congle	Killing game birds out of season without a license	Convicted	25.00
Bud Shaw	.....	Convicted	25.00

## FISH AND GAME WARDEN

Name	Offense	Court Decision	Fine
Albert Fringle	Fishing without a license	Convicted	2.00
Frank Bureh, Jr.	Killing pheasants out of season without a license	Convicted	25.00
Art Hulquist	Hunting without a license	Convicted	10.00
Sam Kunz	Unlawful possession of beaver hides	Convicted	25.00
H. C. Green	Unlawful possession of beaver hides	Convicted	25.00
John Bowers	Shooting Hungarian partridges out of season	Convicted	25.00
Oscar Proffit	Shooting pheasants out of season	Convicted	25.00
Roy Smith	Killing mink in closed county	Dismissed on account of age.	25.00
Earl Marlow	Shooting at Pheasants from auto	Fine suspended.	25.00
Wm. Bothwell	Shagging redfish	Found not guilty by jury	25.00
Eno Hill	Shagging redfish	Found not guilty by jury	25.00
Sam Hamrick	Shagging redfish	Case dismissed.	25.00
Boyd Brammer	Killing grouse out of season	Case dismissed.	25.00
Tom Holloway	Fishing without a license	Not guilty.	25.00
G. P. Trimer	Hunting ducks after sundown	Not guilty.	25.00
W. W. Eby	Hunting ducks after sundown	Committed to jail.	25.00
L. Newbold	Hunting without a license	Committed to jail.	25.00
C. Harshman	Unlawful possession of deer	Convicted	25.00
Joe Strong	Unlawful possession of beaver hides	Convicted	25.00
Jack Cool	Trapping muskrats out of season	Convicted	30.00
Oscar Walker	Shagging redfish	No fine imposed.	50.00
C. T. Slidder	Shagging redfish	Convicted	50.00
N. V. Nye	Shagging redfish	Convicted	25.00
R. Marquardt	Shooting at ducks after sundown	Convicted	25.00
R. T. Slingerly	Shooting at ducks after sundown	Convicted	25.00
A. W. Getty	Killing a swan	Convicted	25.00
Claudio Donno	Shooting pheasants in closed territory	Convicted	35.00
Ted Maytum	Deer hide unlawfully in possession	Convicted	25.00
Frank DeKoltz	Killing pheasants in closed season	Convicted	10.00
Mrs. M. C. McLelland	Hunting pheasants without a license	Convicted	25.00
Harry L. Warner	Shooting Hungarian partridges	Convicted	25.00
Avery Wheeler	Shooting Hungarian partridges	Convicted	25.00
A. E. Berg	Hunting without a license	Convicted	30.00

Name	Offense	Court Decision	Fine
John Doe	Shooting in closed season	Convicted	25.00
Wm. W. Palmer	Killing pheasants in closed county	Convicted	25.00
Joe Weech	Trapping beaver without permit	Fine suspended.	
Mark Lewis	Hunting without a license	Fine suspended.	
Clinton Baker	Killing ducks after sundown	Dismissed because of age.	
Francis Portfors	Killing insectivorous birds	Dismissed because of age.	
Buzz Oud	Killing insectivorous birds	Dismissed because of age.	
Ted Madnard	Hunting without license	Dismissed because of age.	
James Demers	Shooting ducks after sundown	Convicted	10.00
Henry Thue	Shooting ducks after sundown	Convicted	1.00
Ross Frances	Shooting ducks after sundown	Convicted	1.00
Delbert Heaps	Wasteful destruction of game	Convicted	84.00
Charley Gruver	Fishing without license	Convicted	25.00
C. M. Gates	Unlawful possession of muskrat	Convicted	25.00
A. D. Sherlock	Hunting deer in closed area	Convicted	30.00
J. V. Sweet	Hunting sagehen in closed area	Convicted	100.00
Norman Brown	Unlawful possession of Chinese pheasants	Convicted	100.00
Alma Yergensen	Unlawful possession of beaver hides	Convicted	25.00
James Marsh	Unlawful possession of beaver hides	Convicted	25.00
James Marsh	Trapping without a license	Convicted	25.00
Floyd Anderson	Unlawful possession of beaver hides	Convicted	35.00
M. K. Ward	Shooting at ducks after sundown	Convicted	10.00
		Convicted	7.00
<b>TOTAL</b>			
Total number of arrests			\$6,122.25
Total number of fines			303
Total revenue therefrom			229
<b>SUMMARY</b>			
Total number of arrests in 1923 & 1924			\$6,122.25
Total revenue of fines in 1923 & 1924			594
			446
			\$12,322.00



Rainbow trout.