

5H
11
I2
A2

B 436612

Fourteenth Biennial Report
OF THE
FISH and GAME
WARDEN
OF THE
STATE OF IDAHO
1931-1932



AMOS H. ECKERT
State Game Warden

TRIBUNE PUBLISHING CO. PUB. CO.

Fourteenth Biennial Report

OF THE

**FISH and GAME
WARDEN**

OF THE

STATE OF IDAHO

1931-1932



AMOS H. ECKERT
State Game Warden



HONORABLE C. BEN ROSS
Governor of Idaho
Idaho's Typical Sportsman

isjt
Idaho Fish
and game dept
4/26/32

TO HIS EXCELLENCY, C. BEN ROSS,
Governor, and the members of the
Twenty-second session of the Legis-
lature of the State of Idaho:

GENTLEMEN:

In accordance with the provisions of law,
I have the honor and pleasure to submit
herewith the Biennial Report of the Depart-
ment of Fish and Game for the years 1931
and 1932.

This report contains a resume of the ac-
tivities of the department during the biennium
ending December 31, 1932, and presents in
detail the accomplishments of the various
officials, new construction work and costs,
tabulation of fish and game licenses issued
during the biennium and a tabulated state-
ment of the receipts of the department with
classification of disbursements.

Respectfully submitted,

AMOS H. ECKERT,
State Game Warden.



AMOS H. ECKERT
State Game Warden

REPORT OF THE WARDEN

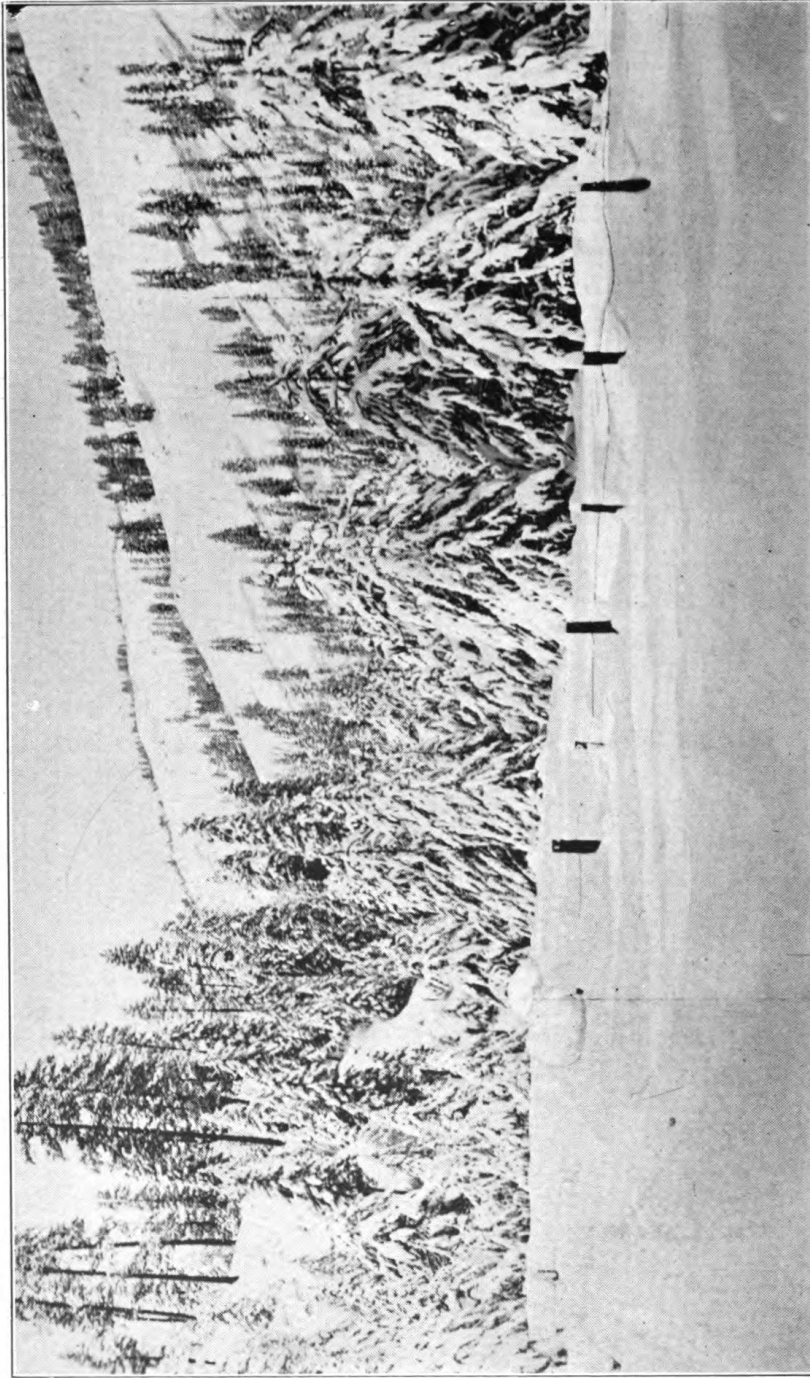
FOREWORD

Stretching from the Utah line to the borders of our Canadian neighbors, Idaho, the land of contradictions, at this season of the year lies under a blanket of snow from which she will arise after winter hibernation refreshed, lucent of field and forest, and, under sapphire skies, the wild life of the state will again seek the mountain crags, the high plateaus, the sylvan retreat, as in the days of old when only the Indian tribes contested their ownership of all this vast domain.

From the far northern section where the contrariety of the spruce and pine clad elevations and valleys contrasts with the vast plains of the south and west, the bear, deer, moose, elk, antelope, mountain goat and sheep, seeks each its natural habitat, there to browse, cavort and propagate. In central and southeastern sections, where, at this season of the year upland game birds seek shelter, the dark line of sage brush against the dazzle of snow; the white-capped peaks tower into ephemeral blue skies or veil themselves from the sight of mortal in grey mist, sharp outlines stand forth like a steel engraving, one of God's masterpieces. With the coming of spring they will spread their wings for short flights, seeking new nesting places. The grouse, the sage hen, the pheasant and the quail, according to their natures, will seek isolation or strut in unconcerned proximity to the haunts of man.

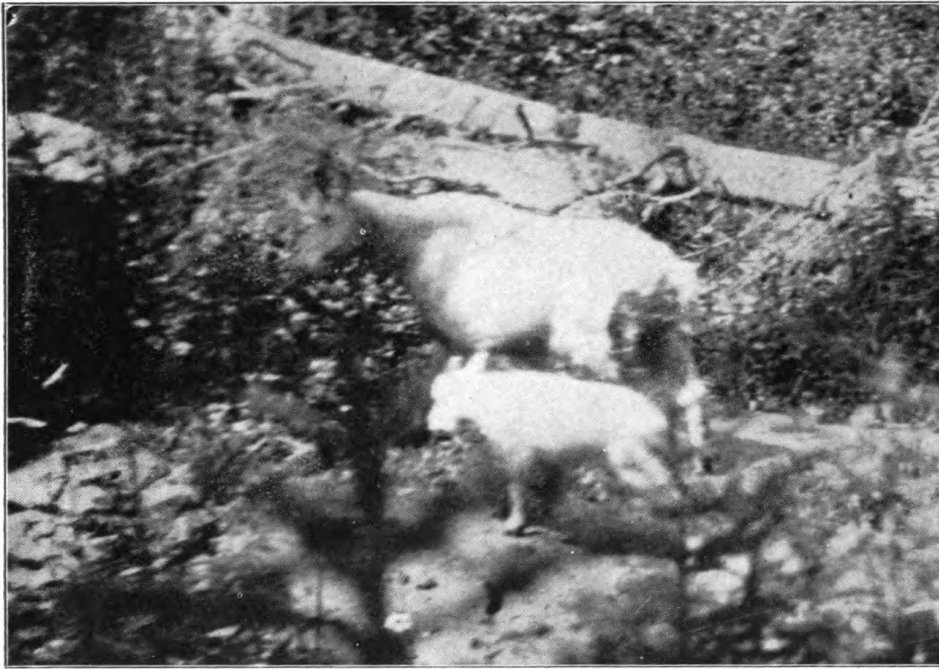
Nowhere else in the nation is there a greater diversity of scenic charm and beauty than in this land of "Edaho", so named by the Indians who roamed this vast western area before the conquest of the white man, and which, literally translated, means "Gem of the Mountains." Its sun-kissed peaks, fertile valleys, beautiful wooded lakes, wide rivers teeming with fish, and cascading streams, from which a great power development is transmuting the desert into gold, still offers incomparable opportunity for protection of game and propagation of the finny tribe despite the vast inroads made by sportsmen who are attracted from far and near by the sport offered.

The present program of conservation of wild life invites the attention of sportsmen without whose cooperation little can be accomplished. Let us show our appreciation of the gifts of the great Creator by preserving and protecting game life which because of natural enemies, disease, lack of forage resultant of an advancing civilization, bringing a greater influx of hunters each year, is fast decreasing.



WINTER SCENE

Natural Christmas tree park, a winter scene in the Lowman district, Boise county. The deep snows present a problem in patrol work for the deputy game wardens who brave heavy weather in the interest of Idaho's game.



Mother Goat and Kid

We of the game department realize the importance of this preservation work and the necessity of constantly restocking the streams with those game fish which are indigenous to this rugged country. To the sportsmen who have cooperated with the department and outlined many of its successful undertakings, as well as to those whose interest is in hunting and fishing only, we express our appreciation and again remind you this is your state. We need your support.

“If with pleasure you are viewing any work that I am doing,
 If you like me or you love me, tell me now;
 Don't withhold your approbation till the preacher makes oration,
 And I lie with snowy lilies o'er my brow;
 For no matter how you shout it, I won't care a bit about it,
 I won't know how many tear drops you have shed;
 If you think some praise is due me, now's the time to slip it to me,
 For I cannot read my tombstone when I'm dead.

“More than fame and more than money is the comment, kind and sunny,
 And the hearty warm approval of a friend;
 For it lends to life a savor and it makes me stronger, braver,
 And it gives me heart and spirit to the end;
 If I earn your praise, bestow it; if you like me, let me know it,
 Let the words of true encouragement be said;
 Do not wait till life is over, and I'm underneath the clover,
 For I cannot read my tombstone when I'm dead.”



Hazards to big game during a hard winter is shown in this scene of elk struggling through heavy drifts in mountain canyons.

FISH AND GAME DEPARTMENT

Game Warden.....Amos H. Eckert
 Fish Commissioner.....Claud C. Drake
 Chief Clerk.....Lucile V. Bailey
 Asst. Clerk.....Pearl Thompson
 Stenographer.....M. Ethel Stauber

The State Fish and Game Department has general supervision over the protection of all fish and game, and the Warden is required by law to devote his entire time to such supervision as an active executive officer, and shall at all times take the field in person in the performance of his duties, when possible.

For administrative purposes the state is at present divided into eight districts, each under the supervision of a chief deputy game warden, with the exception of the southwestern district, which is in charge of the head of the department. During the open season each of the forty-four counties of the state is under the jurisdiction of deputy game wardens, whose duty it is to patrol all streams and the field to prevent violations of the fish and game laws.

During the big game season of 1932, for the first time in the history of the department, a special checking patrol was stationed in the various big game sections to prevent undue violations, and proved most successful, the Forestry Service cooperating with the warden's force.

The Fish Commissioner, who supervises the work of the state fish hatcheries, planting of fish and taking of spawn, reports that in 1931 more than 12,000,000 fingerlings, trout and white fish, were distributed in streams throughout the state, while in 1932 this number was increased to a total of 15,808,419.

In 1931 and 1932 expenditures for permanent structures, including hatcheries, rearing ponds and holding pens for game birds, totaled \$18,103.43 as compared with \$18,723.44 spent in the preceding two years. Total purchase price of lands for permanent improvements in 1931-32 totaled \$8,014.00, as compared with \$419.94 in the two previous years. These permanent improvements include the Jerome bird pens built in 1932 at an approximate cost of \$700.00, and the Eagle pens, near Boise, the approximate cost of which was \$1500.00. The new station constructed at American Falls on the Snake River in 1932, at an approximate cost of \$4,700.00, exclusive of land purchased, is the best site in the state and will serve a large territory.



Top—Deer on the deep trail in the vicinity of Fairfield.
Center and bottom—Groups of deer taken on the winter range above Arrow-rock dam in Ada county.

Eleven hatcheries in the state are at the following points: Sandpoint, Bonner County; Coeur d'Alene, Kootenai County; Grangeville, Idaho County; Evergreen, Adams County; Cascade, Valley County; Twin Falls, Twin Falls County; Hay Spur, Blaine County; Mackay, Custer County; American Falls, Power County; Ashton, Fremont County, the latter being a spawning station.

There were 167 rearing ponds being used during the seasons of 1931-32, the present administration having added 67 to the former total of 100. Seventy-three of these are outside of the hatcheries. Total trout production in 1931 in the hatcheries was 11,459,842. Of this number 3,815,015 wintered in the hatcheries and an additional 1,200,000 were received from the Federal Bureau of Fisheries, 8,405,747 being planted. Four million white fish were planted in 1931.

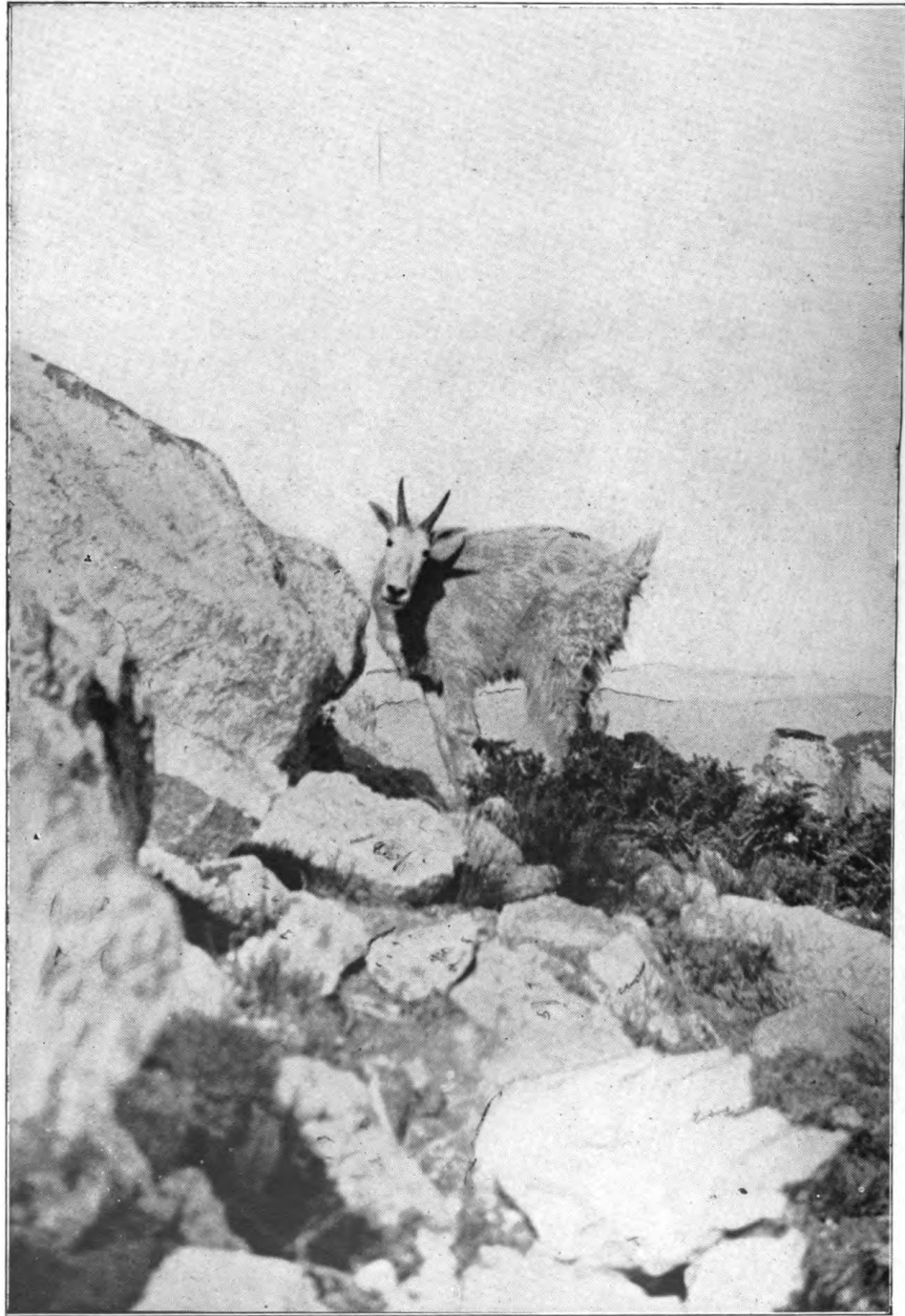
A total of 4,800 game birds hatched at the state game farm at Lapwai under the supervision of James Marshall were liberated this year. Seven hundred birds from six to eight weeks old were transferred to the Jerome farm and 1200 to the Eagle pens near Boise for rearing.

Another accomplishment of the game farm for the first time in its history was the liberating of approximately 100 Chukar partridges, planted in two altitudes for the purpose of studying results, the only known instance in the United States of the planting of these birds, natives of India. The results were very successful. One hundred eighty-six Hungarian partridges were trapped by the department and transferred from southwestern Idaho to the southeastern part of the state as an experiment, and this year some 500 will be trapped and distributed over the entire state.

Cost of fish distribution during the two-year period has been \$17,047.26. Expense of upkeep at the Lapwai game farm was \$29,408.75.

All plantings of fish and liberation of birds in the various sections of the state have been at the instance and with the approval of the sportsmen, many local associations assisting with this part of the program.

The Game Department has carried on a program designed to educate the big game of the state to hunt its salt on the summer range on the higher mountains. This salting plan has a tendency to hold the game on the summer range until fall, thereby preserving the winter range, on the lower plateaus, until there is need of the additional food.



Rocky Mountain goat in its natural habitat in the Clearwater forest area,
monarch for the moment of all he surveys.



Orphan fawns raised by game warden in Northern Idaho.

Especially appreciated by department officials is the cooperation of the Forest Service and sportsmen throughout the state who have assisted in distributing sixty-one tons of sulfurized block salt on the summer range.

The game is one-hundred per cent conditioned to survive sixty days of hard winter weather.

Your game warden, during the summer and fall months, made an intensive study of game conditions in the Selway, Lochsa, Minidoka, Payette and other national forests of the state, accompanied by forestry officials. Especially interesting were the warden's visits to the primitive areas where few white men have penetrated and where nature in all its wild beauty is still undisturbed by the inroads of the human race.

A conservative estimate of the big game in the state as observed by forest officials and the game warden, sets the number of deer to well over the 60,000 mark; some 10,000 elk; 3,000 mountain goat; 1,800 mountain sheep, 500 moose, over four thousand bear of various species and approximately 4,000 antelope.

There were 395 completed cases following arrests for law violation during the two-year period with total collected for fines and confiscations of \$10,619.60. During 1932, on account of economic conditions, only the minimum fine was assessed by the courts in all cases where defendants have pleaded guilty to a misdemeanor.



Sportsmen cooperating with the Game Department, hunting cougar with permit from the warden, as a part of the voluntary work in the battle for elimination of predatory animals. A fair estimate of the deer killed each year by one cougar is 52, or one a week.

STATE GAME FARM**Lapwai**

Report by J. M. Marshall, Supt.

1931

Ringneck Pheasants raised	4102
Melanistic Mutants raised	69
Total	4171
California Valley Quail	82
Chukar Partridges	36

Experiments were made in the raising of the Chukar Partridge (a native of India) and a great deal of information gained for future use in the propagation of this new game bird.

A new pheasant, the "Melanistic Mutant" was introduced to the game farm. A few of these birds were purchased in the East in the fall of 1930, and six hens were used for breeders for the season of 1931. Of the 69 young birds raised from this stock, 30 hens and 10 male birds were kept for breeders for 1932, the remainder planted.

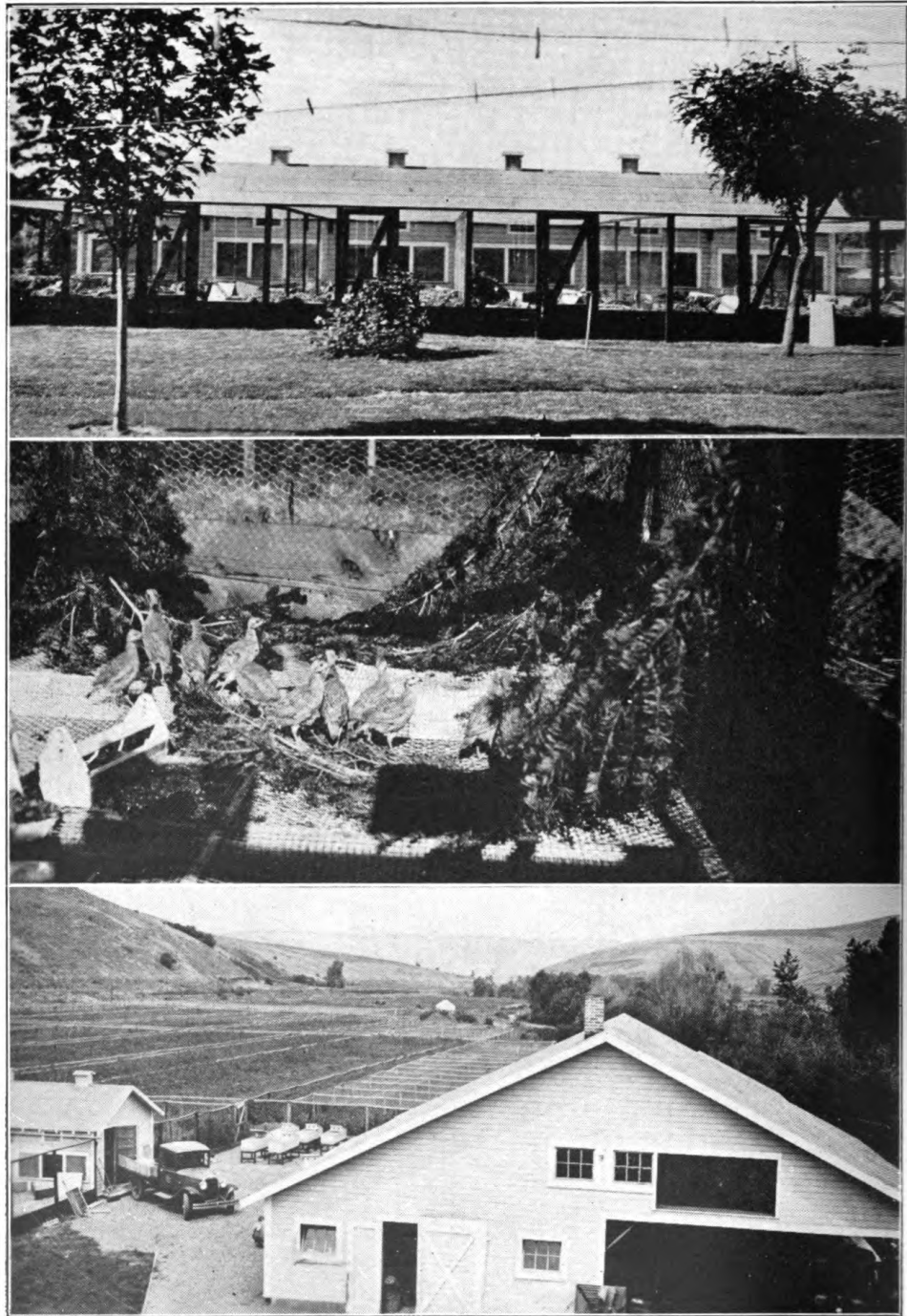
A fire in the month of August destroyed the main buildings, and practically all equipment. Buildings destroyed included feed house, office, toolhouse, hatching yard, incubator house and storage. As most of the field equipment was in storage, it was nearly all destroyed, as well as a 4000 capacity incubator just installed the first of the year.

1932

Ringnecks shipped	4087
Ringnecks to be shipped	150
Ringnecks—1932 hens held for breeders	75
Total raised	4312
Melanistic Mutants shipped	473
Melanistic Mutants—1932 hens held for breeders	75
Melanistic Mutants—1932 males held for exchange	45
Total raised	593
Total Game Pheasants	4905

In addition to the foregoing, several varieties of fancy pheasants were raised.

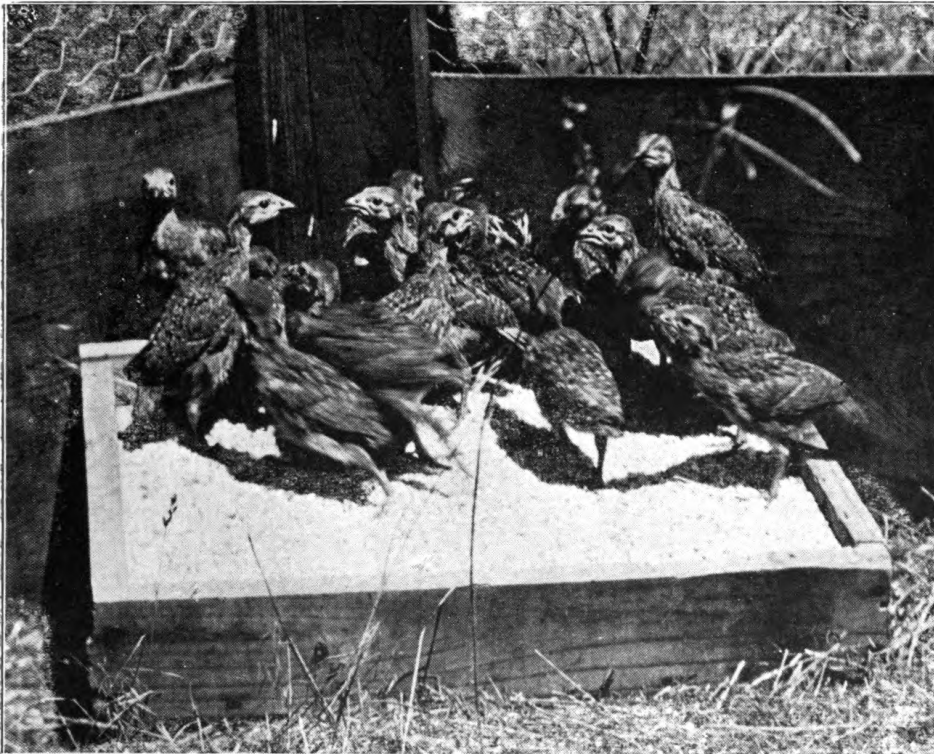
Ringneck, Mongolian and Mutant eggs shipped	8738
Chukar Partridges raised	164



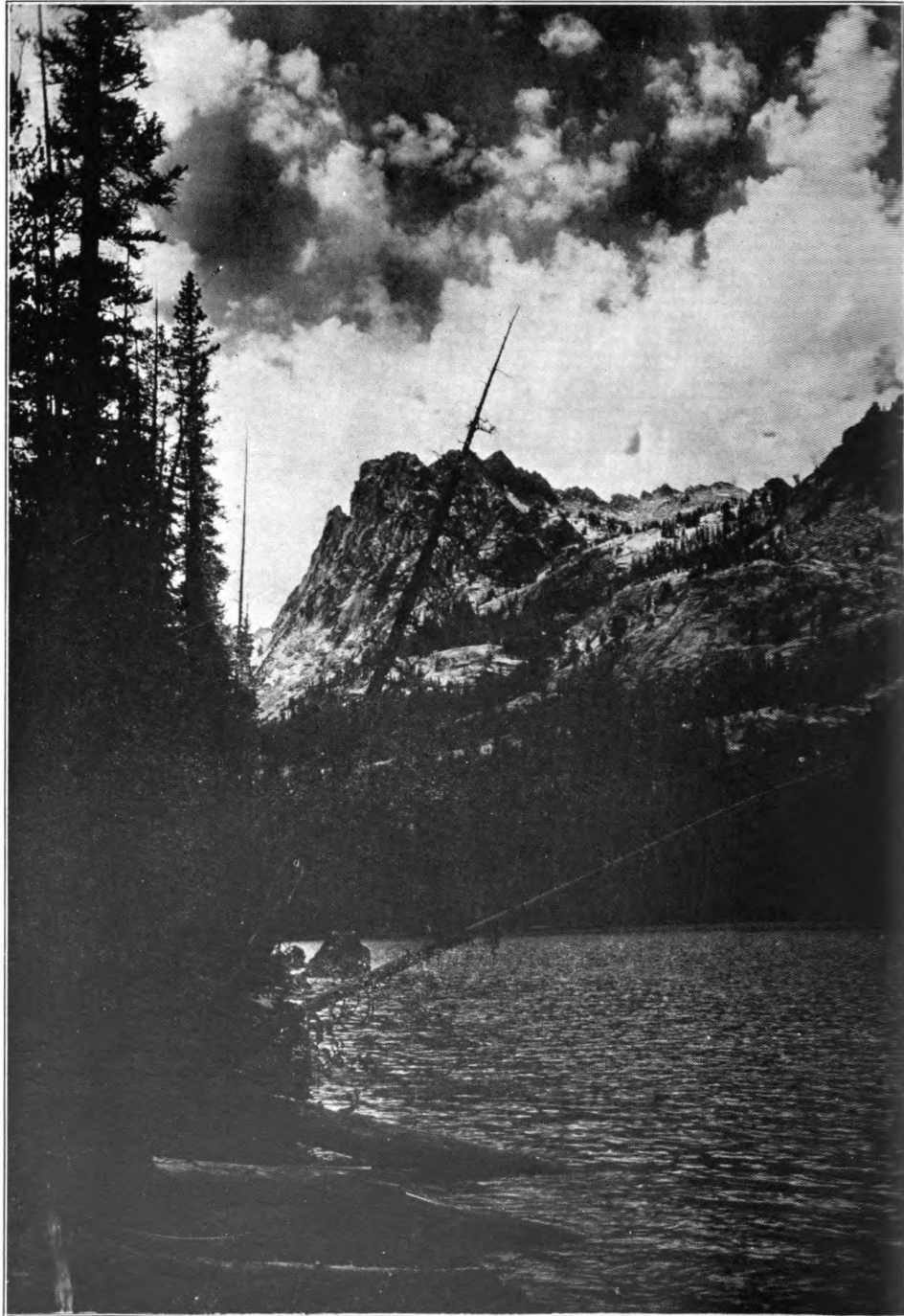
Top—New brooder house and pens combined at the State Game Farm, Lapwai, Idaho. Center—A brood of new chukar partridge being developed by the superintendent at the game farm. Lower—Bird's eye view of the farm showing the feeder house in the foreground and the rearing field and holding pens in the background. From this farm thousands of game birds are shipped to various parts of the state to sportsmen's organizations for liberation each year.

As a result of the total destruction by fire of the main buildings and equipment, new buildings and equipment were built. These were constructed on a different plan with the result that we have a much more modern plant than formerly.

Further experiments were carried out with the Chukar partridge. New equipment was developed and constructed in the spring and a practical method of raising these birds artificially was devised.



Hungarian partridge being distributed and liberated in various parts of the state. These partridge were raised at the state game farm or trapped for distribution in sections where they are becoming scarce.



—Photo by Johnson.

Hell Roaring Lake in the Sawtooth Mountain Range. This is one of the many formerly barren streams of the state which have recently been stocked by the game department with the aid of sportsmen and forest officials.

BIENNIAL REPORT OF THE FISH COMMISSIONER

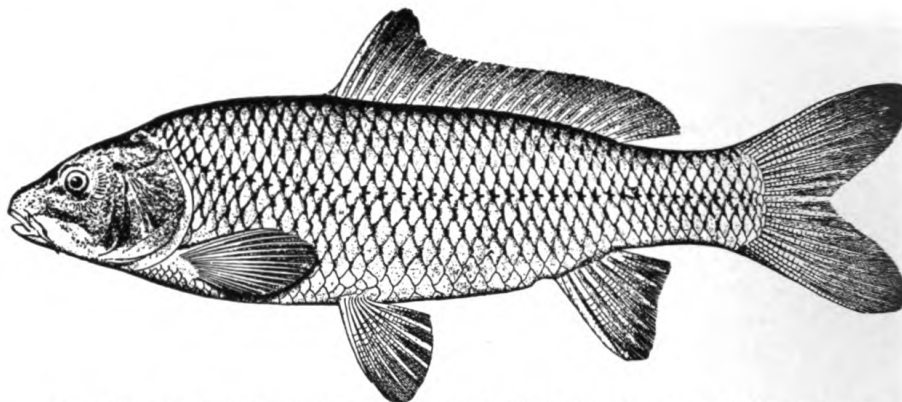
In 1931 a study was made of the various fish hatcheries of Idaho and those of adjoining states, including federal, state and private hatcheries, with the idea that this department might profit by the experience of others in the matters of construction, system of operation, and feeding fish.

We have received valuable cooperation during the past two years from the Federal Bureau of Fisheries. This Bureau has been continually urged by our department to build hatcheries in Idaho so we might receive more benefit from its operations, and at this time the Federal Department is constructing one of the largest trout hatcheries in the United States near Hagerman and it is our belief that other hatcheries and rearing ponds will be built in Idaho by the U. S. Government.

At different times during the biennium we have received valuable advice and helpful cooperation from Mr. Fred Foster, District Supervisor of the Federal Bureau of Fisheries, which has undoubtedly saved this department several thousands of dollars. We have also had a cooperative agreement with Mr. J. R. Russell, Field Superintendent of the Federal Bureau of Fisheries, to the effect that Mr. Heffner, Foreman of the federal hatchery at Salmon City, Idaho, would supervise the taking of rainbow spawn at Williams Lake and hatch all the eggs, the Government to furnish one man and our department one for this work. All eggs hatched are divided. One-third of the fish are planted in Williams Lake to aid in building up that spawning station; one-third at the Federal Hatchery near Salmon City are planted in Idaho waters in that district; the other one-third delivered to the State Fish and Game Department to be planted where needed.

Everyone familiar with fish culture knows that fish should be grown to a fair size before planting in streams, if good results are to be obtained. In order that they attain this necessary growth, rearing ponds are essential, and their construction was deemed the most necessary feature in the program of permanent improvements decided upon for the past biennium. During this two-year period sixty-seven additional rearing ponds have been constructed in various parts of the state, some having been built by sportsmen's organizations, but the majority by this department.

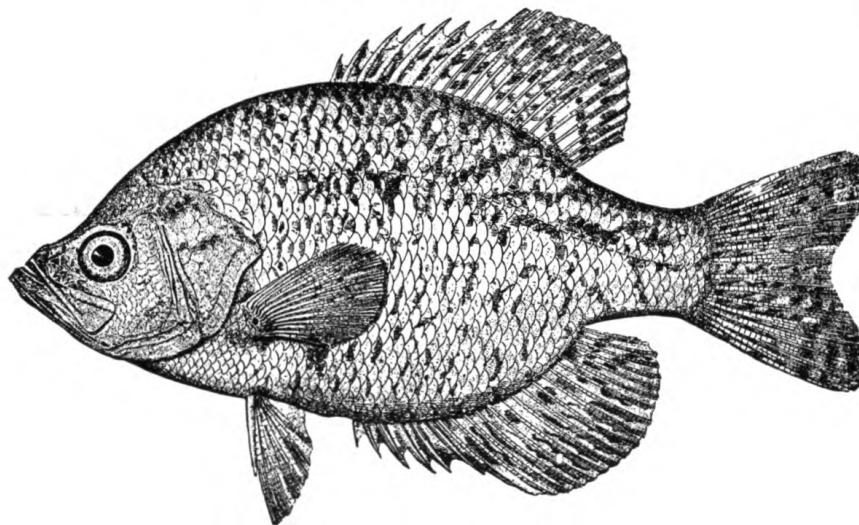
To any individual or organization engaged in the propagation of fish, food has always been a problem. Federal and state departments, as well as owners of private fish hatcheries, have long experimented with various preparations and



German carp being seined and canned for trout food at rearing ponds.

foods, in an endeavor to find a diet that will promote health and growth at a minimum cost. It has been the policy of this department to take advantage of such experiments as have proven successful, rather than to experiment on our own fish. On April 15, 1931, beef livers and some beef hearts were the only foods being used at the state hatcheries, and the price was almost prohibitive, the cost of beef livers being from 11c to 16c per pound and the hearts, 10c per pound. We have practically eliminated the use of beef liver, since the combination of sheep liver and beef hearts is a satisfactory food for small fish. After they have grown a little larger, the young trout are fed a mush once a day, consisting of a cheap grade of flour, blood and canned carp, and once each day they are fed ground horse meat. This is the system of feeding used by successful owners of private hatcheries and has reduced the cost of fish food to approximately one-third of the price being paid on April 15, 1931. This reduction in the cost of feeding has enabled the department to grow the trout to a much larger size before liberation at practically the same cost as before, and makes it possible to hold over winter a large number of trout hatched late in the summer and too small to be liberated before spring. The location of the hatcheries determines to a great extent the kind of fish food used. In the northern section of the state we are feeding sheep livers, beef hearts and beef spleen; in the southern section, where horse meat is plentiful, we are feeding a great deal of mush and ground horse meat, and at the outlying rearing pond station where it is almost impossible to get fresh hearts and livers, we have been using a canned fish preparation, which is very satisfactory and is reasonable in price.

One of the difficulties of artificial propagation is the susceptibility to disease, caused by improper feeding, careless



Calico Bass or Crappie.

handling and unsanitary conditions. It was impressed upon the superintendents of the state hatcheries that they should guard against an outbreak of disease, and in practically every instance these men have been successful in doing this. At the Hay Spur Hatchery, where for years past there has been an annual outbreak of "Furunculosis", and where the trout were seriously affected by this disease, we have been successful in our efforts to bring this condition under control. During the past year the fish have not been affected by this trouble, and it is our belief that we can prevent its recurrence.

FISH SALVAGING

In the summer of 1931, when it became apparent that a considerable number of springs, creeks and irrigating ditches would be dry, due to the drouth that was general that year over the State of Idaho, and that the fish in these streams would be left to die if they were not transplanted, letters were immediately circulated to employees of the Fish and Game Department, asking them to keep a close watch on all streams in their district and if necessary to transplant the fish to other waters. In some districts, fortunately, no salvaging was necessary, but in other sections it became quite a problem. There were only a few instances where fish were in inaccessible places, making it impossible to move them. Reports from game wardens in various sections of the state show that, with the assistance of sportsmen, they were able to salvage a total of 343,850 trout from three to ten inches long, and to transplant them in streams where they could survive.



Above: Steelhead caught below Lewiston Dam.
Below: Rainbow trout caught in Silver Creek near Hailey.

A different method of salvaging the fish at the Deer Flat Reservoir was applied during the past two years to that used previously. The water was turned in and out of the ditches, making it impossible to have a fish distributing truck there whenever it was needed. The situation was explained to the sportsmen of Nampa and Caldwell, and they were asked to assist the department at times when our fish trucks were in other parts of the state, and our thanks are extended to members of these sportsmen's organizations for their assistance.

In 1931 it was estimated that there were approximately three million bass, perch and crappie salvaged from the irrigating ditches and transferred to upper and lower Lake Lowell. In 1932 the men doing this work were instructed to keep an accurate check in numbers of fish taken from the ditches and returned to the lake. They found the number of pounds of fish per load and the average number per pound. Each load had approximately 500 pounds of bass, perch and crappie. They also kept an accurate record of the number of loads hauled. Their figures show that there were approximately fifteen million fish salvaged this year. It necessarily took a much longer time to perform this work of transplanting fish in 1932 than it did the year before, since such an enormous number of fish were salvaged.

The presence of trash fish, such as suckers, carp, squawfish and mountain whitefish brought considerable complaint from the sportsmen in the southern part of the state. The whitefish in the southeastern section are becoming so numerous that they are crowding the trout from their natural habitat. We have seined and trapped a large number. Our purpose in removing these fish from the streams was two-fold: First, to benefit the trout streams, and second, to utilize for trout food the fish taken from the streams. Several thousand pounds of trash fish were ground and fed fresh to the young trout in various hatcheries and thousands of pounds of carp and suckers were canned at a reasonable cost and used for trout food during the summer. We also distributed 30,000 or 40,000 pounds of seined fish to needy persons.

FISH DISTRIBUTION

Fish distribution is similar to harvesting a wheat crop. It takes several months to rear fish to a size large enough to plant, and suddenly there are thousands of them ready to be hauled to streams and lakes and planted while the roads are in such condition that trucks can travel them. This department previously had two fish distributing trucks equipped

with oxygen tanks, which were efficient equipment, but expensive to operate as it was necessary to use tubes of oxygen to force air thru the water while the fish were in the tank. A distributing truck with a new type of tank was bought by the department in 1931. It has a water circulating system instead of an oxygen system, and there is practically no cost of operation. The new truck has a half-horse power gasoline motor at the side of the fish tank which drives a circulating pump, forcing water through pipes which are installed on the inside of the tank. There are several outlets to which nozzles are attached. Water coming thru the pipes sprays back into the tank in such a way that it forces air through the tanks.

On March 22, 1932 an experiment was made by tagging, in their outer gill cover, 1,000 six inch Rainbow trout and liberating them in the Snake River near Salmon Falls. This was done in an effort to determine how far a trout would move in either direction from the place where it was planted, and also to learn how fast it would grow under favorable conditions. An accurate check was made by sportsmen from Buhl and Twin Falls as to the number of tagged fish caught, the distance from where they were planted and their growth in length and weight. The records show that these fish wander at will up or down stream, some having been caught as far as five miles and more from where they were planted. Their growth was most surprising. Six months after these fish were planted they had attained a length of from eleven to fourteen and a half inches, and weighed from three-quarters of a pound to a pound and a half. It is the intention of this department to make other experiments of like nature during the next two years.

In 1931 we received approximately 1,200,000 trout from the Federal Bureau of Fisheries and in 1932 approximately 1,900,000. A few of these were large enough to be planted when received, but most of them were kept in rearing ponds until they became large enough to be liberated.

Thru the cooperation of the Forest Service and individuals who own pack outfits, we have been able to transfer thousands of fish by pack train to forest lakes and streams in sections inaccessible to our trucks. During the past two years twenty-five barren lakes have been planted with trout in the Sawtooth section and in various districts adjacent to McCall.

SPAWN-TAKING OPERATIONS

Spawn-taking is an expensive operation when conducted at small stations on streams that are a long distance from the hatcheries. The most satisfactory way to procure trout spawn is by increasing the number of fish at lakes and reservoirs

suitable for this purpose so that large numbers of eggs can be taken at one place. The more eggs taken at a station, the greater the reduction in cost per thousand for collecting them. It is our intention to centralize spawn-taking as much as possible and build successful, permanent traps at these stations; also to increase the number of fish at these stations to such an extent that it will not be necessary to feed brood stock the year around in order to take the eggs needed for our hatcheries. At a number of spawning stations permanent forms for fish racks that are easy to operate and that will not be destroyed by high water have been constructed. Due to high water following the excessive drouth of 1931, in the spring of



Above: Rearing ponds built in Idaho Falls city park by Bonneville Sportsmen's Association. Below: Improved fish trap in Silver Creek, one of several permanently constructed this year.

1932, trout at the various stations changed to different spawning beds. There was a shortage of mature trout at these stations and at the hatcheries. In 1931 arrangements were made to increase the number of mature brood stock, which program will be carried out as fast as possible. Cutthroat and Rainbow trout are usually from two to four years old before they produce eggs, therefore trout selected for brood stock the past two years will not produce many eggs until the spring of 1934, at which time they will be three years old. If nothing unforeseen happens to our brood stock before they reach maturity, we should be able to double our present egg take.



State Game Warden with a few minute's catch of Rainbow trout from the North Fork of Snake River.

TOTAL DISTRIBUTION OF FISH FOR BIENNIUM

HATCHERY	VARIETY	1931	1932
American Falls	Trout		335,450
Ashton	"	1,506,895	1,594,224
Cascade	"	587,800	475,540
Coeur d'Alene	"	1,609,300	1,326,000
Evergreen	"	706,940	796,860
Grangeville	"	450,000	692,000
Hay Spur	"	1,024,479	1,233,060
Henry's Lake	"	455,000	310,000
Mackay	"	437,586	1,216,800
Pocatello	"	467,727	
Sandpoint	Trout and Whitefish	4,308,700	4,692,000
Twin Falls	Trout	230,000	1,162,685
Trout purchased from private hatcheries		130,920	73,800
Trout received from Federal Bureau of Fisheries		1,200,000	1,900,000
Totals		13,115,347	15,808,419
Total for the years 1931 and 1932			28,923,766

In addition to the above there are on hand at the various hatcheries 2,270,440.

AMERICAN FALLS HATCHERY

Charles Foster, Supt.

When it was decided that the station near Pocatello on the Fort Hall Indian reservation would have to be abandoned, our next problem was to find a spring with a good flow of water in such a location that fish could be distributed to this district at the least cost.

In deciding upon a site for a fish hatchery, several things must be taken into consideration. Springs for fish cultural purposes should flow a considerable amount of water, be of the right temperature and steady in flow the year round; the water must be pure and the ground from which the spring flows should have several feet of fall and must be so located in the district to be served that the distribution may be made at a minimum of cost. We were very fortunate in securing the American Falls hatchery site, since the spring at this location is one of the best in Idaho for the purpose of fish propagation.

This place was purchased for \$6,500.00, which may seem costly for a spring and a location on which to erect a fish hatchery, but to anyone familiar with the requirements es-

sential to the building up of station for fish propagation, an inspection of this site would satisfactorily prove that more money had been spent for building retaining walls, spillways, dams and drain ditches than our entire purchase price totalled.

The temperature of the water at this spring is 56°, it has a fifteen to twenty second-foot of water flow, is steady the year round and has a fall of about twenty feet within one-half mile. The state chemist reports that he has tested this spring fifteen times and that it is one of the purest to come under his observation.

We have just begun to improve this station, altho much has been accomplished. A temporary hatchery building and feed room combined has been erected, nineteen hatching troughs placed, pipe connected with the city main which carries water from large springs that are boxed within the Reuger Spring reservoir. One dam has been constructed to form a large pond in the creek bed. Eight hundred feet of roadway has been graded up to and over a newly constructed culvert which also forms a dam, backing water a considerable distance in the creek bed and forming an ideal rearing pond. At this time we have 21,000 one-year old brood stock there. Six large cement rearing ponds have been constructed and a supply pipe line has been connected to these ponds from the intake reservoir to supply them with a sufficient amount of water. These ponds have a frame work covered with wire netting to guard against loss from predatory fish birds or ducks.

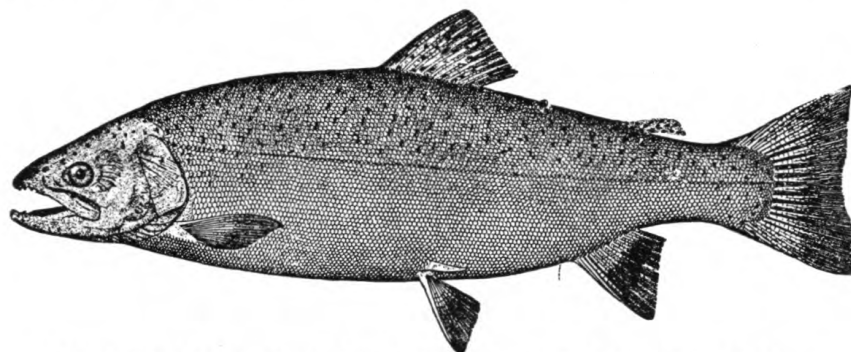
A three-room cabin was constructed for the superintendent's living quarters and about four acres of ground levelled in preparation for landscaping.

This station has plenty of water and space to take care of all improvements the department may make within the next ten years. It is centrally located in a large and important district, with a sufficient capacity, when completed, to produce and handle at least ten million fish of planting size each year. The location is readily accessible at all seasons, adjoins the Snake River where trash fish are plentiful, therefore the cost of feeding will be materially reduced. This hatchery is destined to become a very important one in future rearing and distribution of trout in Idaho.

The following table gives the number and varieties of fish distributed from this hatchery during the biennium:

VARIETY	SIZE	1931	1932
Rainbow.....	3" to 6" fingerlings		263,250
Native.....	4" to 6" fingerlings		72,200
Total			<u>335,450</u>

In addition to the above we still have on hand approximately 150,000 3-inch Rainbow fingerlings, 125,000 2½-inch Steelhead fingerlings, 40,000 2-inch Native fingerlings, 21,000 8-inch Rainbow which we are holding for brood stock, a total of 336,000 of all varieties.



Steelhead, sea-run trout that migrates into Idaho waters to spawn.

ASHTON HATCHERY

J. E. Clark, Supt.

Lyle Ferney, Asst.

Buildings at this hatchery are the most modern of all the stations operated by the department. They consist of a six-room house for the superintendent, a four-room cottage for the assistant, a coal house, ice house and garage.

The hatchery building proper is twenty-two feet wide and 154 feet long. It contains fifty-four hatching troughs. At one end of the building is a work, store and cooking room. There are ten cement rearing ponds and a slough that is used for the brood stock. An embankment has been built around a spring, forming a small reservoir. The water supply for the hatchery and rearing ponds is taken from this reservoir. Under this present arrangement there is not sufficient water to supply the rearing ponds and the hatchery at the same time. More rearing ponds are needed at this station, but at present the water supply is inadequate.

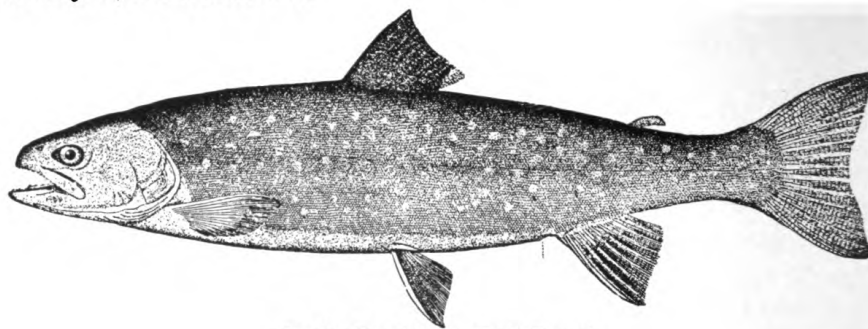
We have not made extensive improvements at this station during the past biennium, tho a great deal has been done in the way of minor repairs and renovations, such as drain pipes for the hatching troughs, covers for the troughs, plastering and painting of rearing ponds, screens built, spillway repaired, new rack built across the slough to hold trash fish for fish food purposes, fish troughs painted inside and out, assistant's cottage painted inside, drain pipe from assistant's house completely rebuilt. A seventy-five gallon capacity food cooker was bought and placed in the store and cookroom of the hatchery for the purpose of reducing the cost of fish food.

Just recently we have placed fourteen new troughs in the hatchery, constructed one new dam in the creek bed to give more room for the brood stock, and rebuilt a dam at the large holding pond which will be used for brood stock.

The following table gives the number and varieties of fish distributed from this hatchery for the biennium:

VARIETY	SIZE	1931	1932
Rainbow.....	2" to 5" fingerlings	719,245	886,100
Native.....	2" to 3½" fingerlings	787,650	637,400
Steelhead.....	1½" to 2" fingerlings		70,724
Totals		1,506,895	1,594,224
Total for 1931 and 1932			3,101,119

The number of brood stock has been increased to approximately 8,000 Rainbow.



Dolly Varden or Bull Trout.

CASCADE HATCHERY

Al Laws, Supt.

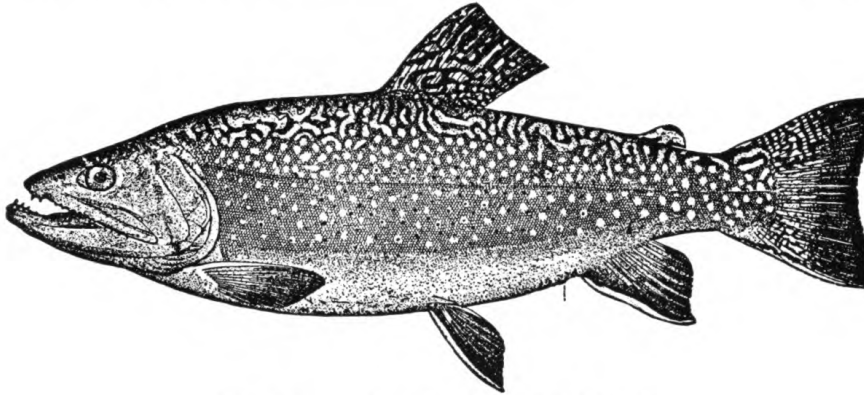
This station was located a few years ago on property leased from an individual by this department. Improvements consist of a two-room cottage, garage, ice house and a twelve-trough fish hatchery with a small lean-to for a work room. There are also two very small rearing ponds.

The spring which supplies this hatchery is ideal in temperature and steady in flow, but the water flow in the past has only been approximately ten miner inches. The inadequacy of the water supply made it necessary to liberate the trout while they were of a fry size; however, in 1931 we had twelve holes drilled at the base of the supply spring, which increased the flow of water. This will enable us to build larger rearing ponds which will produce fish of a size more suitable for planting.

Other improvements made during the biennium include a new wall around the ice house, wire fence around hatchery grounds, one rearing pond relined, new supply pipe placed from spring to hatchery and floor in hatchery building repaired.

The following table shows the number and varieties of fish distributed from this hatchery during the biennium:

VARIETY	SIZE	1931	1932
Rainbow.....	2 ½" to 3" fingerlings	136,800	375,540
Native.....	1 ½" to 3 ½" fingerlings ..	451,000	100,000
Totals		587,800	475,540
Total for 1931 and 1932			1,063,340



The Eastern Brook or Speckled Trout.

COEUR D'ALENE HATCHERY

Joseph Clark, Supt.

Alan J. Clark, Asst. Calmar Clark, Asst.

This station, which consists of a hatchery building with apartment for the superintendent, was originally operated by the sportsmen of this district, but later turned over to the Fish and Game Department.

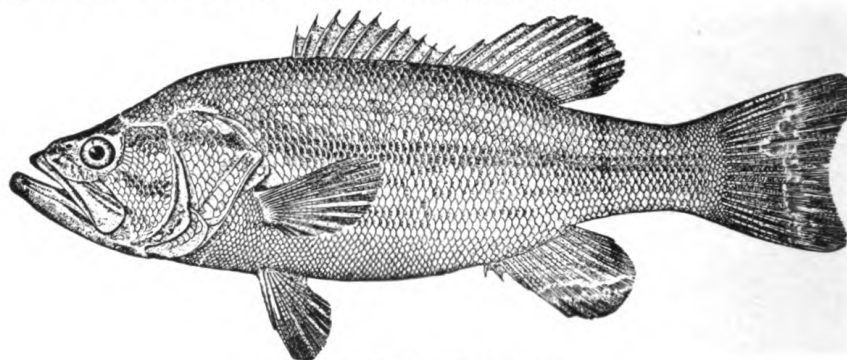
The water is pumped from Coeur d'Alene lake thru intake pipes. In order to secure water as near the proper temperature as possible, an arrangement was made whereby one pipe takes water from the bottom of the lake and the other from a few feet under the surface, a very complicated and expensive method, as the electric bill for operating the pumps amounts to about \$40.00 per month. Owing to its location and the complicated arrangement for obtaining water, no improvements are contemplated at this time.

A few minor improvements have been made, however, including a concrete walk from the hatchery door to the apartment stairway, relining the lower inside hatchery wall with one-inch lumber, replacing old hatchery troughs with new and painting walls and troughs. During the past year the intake pipe was raised and repaired and universal joints added at a cost of approximately \$250.00.

The following table shows the number and varieties of fish distributed from this hatchery during the biennium:

VARIETY	SIZE	1931	1932
Rainbow.....	2" to 3" fingerlings	40,000	40,000
Native.....	2" to 3½" fingerlings.....	871,000	770,000
Eastern Brook.....	3" to 5" fingerlings	698,300	516,000
Totals		1,609,300	1,326,000
Total for 1931 and 1932			2,935,300

In addition to the above we still have on hand approximately 600,000 Eastern Brook fry at the hatchery.



Large-Mouth Black Bass.

EVERGREEN HATCHERY

C. E. Miller, Supt.

This station is the most attractively arranged of any belonging to the department. The grounds have been landscaped, walks and a small pool constructed, which, added to the natural beauty of its surroundings, makes this a very picturesque location.

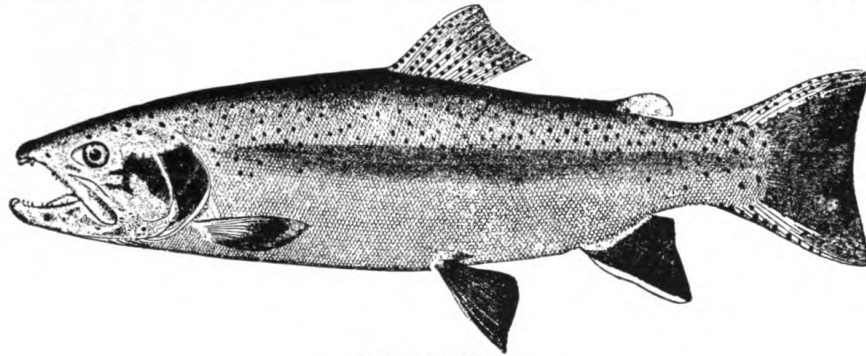
On April 15, 1931, the plant consisted of a hatchery building 20'x40'; twelve standard troughs of 25,000 egg capacity; a set of ten rearing ponds 2'x4'x20'; two ponds 2'x6'x15'; a three-room dwelling for the superintendent; a supply of 425,000 Eastern Brook trout fry (1600 to the pound), and 127,000 Rainbow eggs received by the superintendent on April 12.

During the summer of 1931 a battery of three new standard rearing ponds 4'x6'x60' were built, together with a concrete outlet and 140 feet of ten-inch galvanized iron pipe inlet at an approximate cost of \$1,575.00. A settling pond was constructed at an approximate cost of \$125.00 to avoid a recurrence of the disaster of 1930 when a cloud-burst caused a loss of a half million fish. A feed storage and work room was added and the superintendent's dwelling enlarged and improved at an approximate cost of \$150.00.

Enlarging of the buildings and construction of rearing ponds has materially increased the output of trout here, our records showing that the increase during the past two years has practically doubled the output of any preceding two years.

Following is a table showing the number and varieties of fish that were distributed from this hatchery during the biennium:

VARIETY	SIZE	1931	1932
Rainbow.....	1 1/2" to 3" fingerlings	257,000	253,800
Native.....	2" to 6" fingerlings	26,260	370,310
Eastern Brook.....	2" to 6" fingerlings.....	423,680	172,750
Totals		706,940	796,860
Total for 1931 and 1932			1,503,800



Rainbow Trout

GRANGEVILLE HATCHERY

Lester Gaver, Supt.

Combined with the superintendent's dwelling in one building, this hatchery is modern, well built and equipped, several thousand dollars having been expended for its construction. The water supply, however, is inadequate, having as its source a small spring creek which flows past the hatchery. At no time of year is there sufficient water. It varies in temperature over a twenty-four hour period and carries so much silt to the hatchery troughs that fish propagation is very difficult. The only way this station can be operated without too great an expenditure is by placing a culturist there from three to six months each year when the water is at its best.

The following table shows the number and varieties of fish distributed from this hatchery during the biennium:

VARIETY	SIZE	1931	1932
Rainbow	2" fingerlings		292,000
Native.....	1 1/2" to 3" fingerlings	450,000	400,000
Totals		450,000	692,000
Total for 1931 and 1932			1,142,000

HAY SPUR HATCHERY

O. A. Henderson, Supt. John Gillihan, Asst.

Large and well equipped, the Hay Spur hatchery consists of a house for the superintendent, cottage for the assistant, garage and ice house, ten small wooden and three large cement rearing ponds.

The spring which supplies water is located about one-half mile from the hatchery, temperature 52°, and an embankment has been erected to back the water high enough for a flow thru the hatchery troughs. Steady in flow, it supplies enough water for the hatchery and the rearing ponds already constructed. To use the three cement rearing ponds it is necessary to divert the water which flows thru the hatchery troughs.

A few improvements have been made. Four wooden rearing ponds, previously discarded, were moved to a new location; the concrete ponds have been repaired, the water distribution system changed, a well dug, a cellar built, all the hatchery troughs and concrete ponds painted and a lighting system installed. These improvements were all made by the superintendent and his assistant.

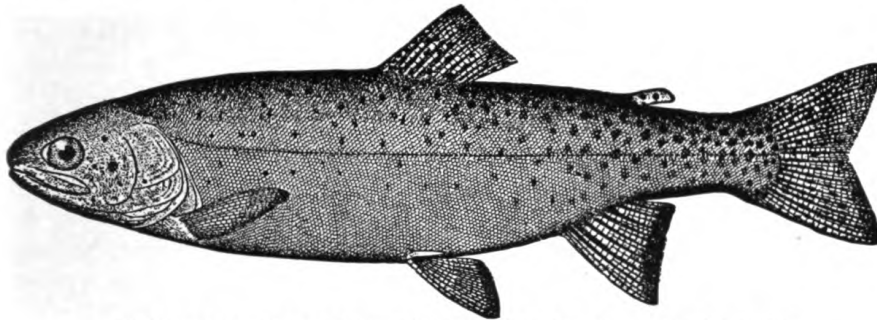
A new rearing pond system, which will take care of all the fish hatched at this station is planned and the survey completed. This arrangement will enable the department to rear a sufficient number of fish for planting in this district every year.

A recently constructed permanent rack across Loving Creek will hold trout for spawn taking purposes under natural conditions. This creek should furnish sufficient food to mature trout producing ten million eggs per year. Three permanent forms for fish racks which will eliminate difficulty in holding the traps and a great deal of disagreeable work in bad weather, are additional improvements.

Following is a table showing the number and varieties of fish distributed from this hatchery during the biennium:

VARIETY	SIZE	1931	1932
Rainbow.....	2" to 5" fingerlings	643,262	1,204,000
Native.....	3" to 6" fingerlings	307,175	5,000
Eastern Brook.....	2" to 3 ½" fingerlings	73,250	
California Golden.....	4" to 5" fingerlings	792	
Little Red Salmon.....	5" fingerlings		24,060
Totals		1,024,479	1,233,060
Total for 1931 and 1932			2,257,539

In addition to the above we still have on hand approximately 50,000 Little Red Salmon, 15,000 Native and 20,000 Rainbow of different sizes and ages for brood stock.



Cutthroat trout are found in most of the streams of Idaho.

HENRY'S LAKE HATCHERY

B. D. Ainsworth, Supt.

Built originally for an eyeing station only, this hatchery is located on the bank of Henry's Lake in Fremont County and consists of a small two-room cottage and hatchery built of rough, native lumber. The hatchery is not large, but modern and serves the purpose for which it was built.

This property was greatly improved by leveling the yard and planting grass and flowers. A new floor laid in the cottage and a screened-in porch built, all work having been done by the superintendent. The old truck was traded in on a new one for the Ashton Station and the truck formerly used at the Ashton Station placed here.

A small spring two or three hundred yards east of the hatchery supplies enough water for the hatchery troughs, then flows into a dirt rearing pond. The low temperatures of the spring, 45 degrees, interferes with the rapid growth of the fish.

Each year there are from 1,000,000 to 5,000,000 Native Cutthroat trout eggs taken here and distributed to other fish hatcheries. No other spawn-taking station having been built up in the past, the department is too dependent on this station for enough trout eggs to fill our hatcheries.

The following table shows the number and varieties of fish distributed from this hatchery during the biennium:

VARIETY	SIZE	1931	1932
Native.....	2" to 3 1/2" fingerlings	455,000	310,000
Total for 1931 and 1932			765,000

MACKAY HATCHERY

John Coleman, Supt.

The sportsmen of Mackay deserve a great deal of credit for their efforts in securing this property and assisting Mr. Coleman to erect buildings and rearing ponds. The buildings are neither attractive nor convenient, and it is hoped that the department will be able, in the near future, to make such improvements as this station deserves. A small two-room house, which has been lined with beaver board, an ice-house and garage combined, hatchery building, four small rearing ponds and some little equipment, constitute the state's property here. The station has been improved by levelling the grounds around the buildings and by building a battery of six concrete fish ponds, 4'x7'x60', together with one concrete flume from the water supply to the new ponds and hatchery. This enables us to hold over winter approximately 500,000 trout to be grown and liberated in the spring.

The old truck was traded in on a new one.

Prior to 1931 the Mackay hatchery had the best site for fish propagation of any in the state, having a much larger water flow than the Twin Falls station. The water supply is diverted from a spring, which has a large and steady flow the year round and is ideal in temperature for fish propagation.

The following table shows the number and varieties of fish distributed from this station during the biennium:

VARIETY	SIZE	1931	1932
Rainbow (transferred to rearing ponds)	1" to 2" fingerlings	437,586	
Rainbow (planted from hatchery) 2" to 6" fingerlings		1,216,800
Total for 1931 and 1932			1,654,386

POCATELLO HATCHERY

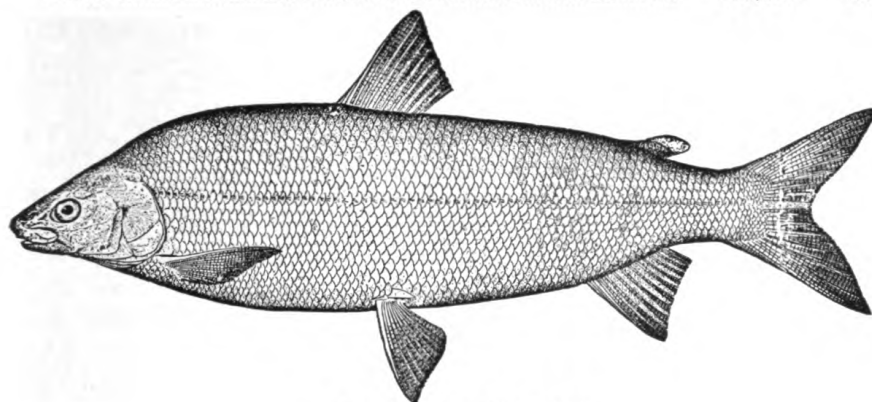
Lester Garver, Supt.

Sportsmen in the Pocatello district have known for some time that it would be impossible to continue to operate the Pocatello station at Jimmy Drink Spring on the Indian Reservation, as the Indians accustomed to fishing near this spring never became reconciled to the trapping of fish during the spawning season. The improvements, which were only temporary, consisted of a little one-room shack, a small work shack and a hull of a building to cover eight fish egg hatching troughs. Very little equipment being on hand, nothing was added in the way of improvements except a few necessities. For preparing a mash to be fed to the fish a fifty-gallon food cooker was installed. Fish troughs at this station had a capacity of 200,000 fish eggs.

The small amount of equipment at this station was moved to the new location at American Falls.

The following table shows the number and varieties of fish distributed from this hatchery during the biennium:

VARIETY	SIZE	1931	1932
Rainbow.....	2" to 4" fingerlings	200,727	
Native.....	2" to 4" fingerlings	247,000	
Steelhead.....	2" to 3 ½" fingerlings	20,000	
Total		467,727	None



Great Lakes Whitefish

SANDPOINT HATCHERY

R. W. Brown, Supt. Dale Stillinger, Asst.

Improvements here consist of a forty-eight trough hatchery building, two-room cottage for the superintendent, ice house, lean-to garage and one large dirt rearing pond, the property being fenced.

During the summer of 1931 a number of minor improvements were made. Brush and 120 stumps were cleared from one-acre grove; three acres of ground plowed and levelled and prepared for seeding grass. We hauled thirty-five loads of gravel for the bottom of the rearing ponds; built twenty rods of fence, platform and door for the ice house; made twenty new hatching trays and thirty new covers for hatching troughs, painted troughs, covers, trays, ice house and garage.

The water supply for this hatchery comes from a spring some distance from the building, which furnishes enough for the hatchery troughs only. It is then diverted thru the large dirt rearing pond. This spring flows steadily the year around and holds a temperature of only 40°, which is too cold for successful fish propagation.

In 1932 we made a few additional improvements in the equipment used in handling the white fish eggs, and it is our

intention to double this outfit as soon as possible. Seventy-five yards of dirt was hauled to fill in and level the grounds around the hatchery. Fifteen yards of gravel and sand were hauled for the driveway. Rock was riprapped one-third of the rearing ponds 150 feet long and 20 feet wide, and 25 yards of gravel added to the bottoms of the ponds. Grass seed and shrubbery were planted around the hatchery and cottage and seven native trees on the lawn.

Ruby Creek Rearing Station is operated in connection with the Sandpoint Hatchery, the improvements consisting of a cottage, small building or storage and work room, diversion dam in creek and seventeen rearing ponds. In the summer of 1931 we disinfected and whitewashed the rearing ponds, made six new screens for pond outlets, constructed a concrete wall eight inches thick and three feet high and 150 feet around the new rearing pond; erected another concrete wall eight inches thick and three feet high and 150 feet around the new rearing pond; erected another concrete wall eight inches thick, three feet high and three and one-half feet long from old ponds to new rearing pond, and covered bottom of pond with nine yards of gravel. In the spring of 1932 it was necessary to repair dams and concrete work at this station. One new concrete wing of the dam, 17 feet long and five feet high was built, and a new spillway of concrete six feet long and three feet wide at the end of the rearing pond completed. Other improvements included repairing and gravelling two hundred yards of road from the highway, grading and levelling of lawn for seeding grass, cottage and storage buildings painted and a cooker installed.

During the early summer when the water at Ruby Creek is warm enough to speed the growth of fish, they are moved from Sandpoint to this rearing station where they thrive exceedingly before being planted in the fall.

The following table shows the number and varieties of fish distributed from this hatchery during the biennium:

VARIETY	SIZE	1931	1932
Rainbow.....	2" to 4" fingerlings	225,200	446,000
Native.....	2" to 4" fingerlings	293,500	302,000
Eastern Brook.....	4" to 5" fingerlings	290,000	444,000
White Fish.....	Fry	3,500,000	3,500,000
Totals		4,308,700	4,692,000
Total for 1931 and 1932			9,000,700

In addition to the above we still have on hand approximately 553,000 Eastern Brook Fry.

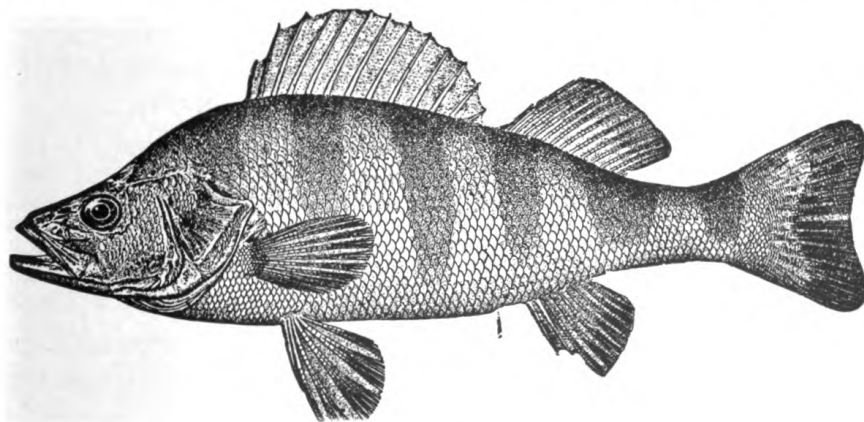
TWIN FALLS HATCHERY

O. H. Dahlquist, Supt.

This hatchery, the ground for which was originally bought by the Southern Idaho Sportsmen's association, is improved with a two-room house, a sixteen trough hatchery, six cement rearing ponds and four dirt ponds. Prior to April 15, 1931, this plant was operated just as it was turned over to the department. We procured a lease for twenty years at one dollar per year from this association in order that the department might operate this station as it thought best.

The water supply comes from a tunnel within a few yards of the hatchery building and maintains an even temperature and steady flow the year round. This station could never be enlarged to any extent, but could be built into a hatchery with rearing ponds having a capacity great enough to care for the district it was intended for.

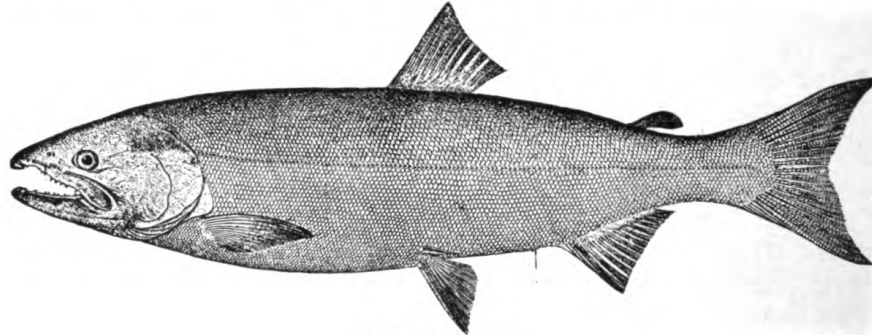
Since it seemed desirable to raise larger fish for this district and liberate them in greater quantities, extensive improvements were planned here. In the summer of 1931 a three-room addition to the small house already on the property was built, as well as an addition to the hatchery building for work house, cooking and store-room. This addition made it possible for us to place two more hatching troughs in line with the sixteen already there. In an effort to reduce the cost of feeding fish, we bought a number of food cookers, one being placed in the workroom of the hatchery building. An electric Hobart meat grinder was added to the equipment, a necessary addition owing to the increase in fish fed at the hatchery. A platform 5'x20' was built at the entrance; six concrete rearing ponds, 4'x7'x60'; a concrete spillway from ponds, 3'x4'x90'; one supply trough leading from the old to the new ponds, 16"x24"



Yellow Perch.

x16'; an additional supply pipe for the lower section south of the new ponds 6"x 60'; an additional supply trough 12"x 24"x 16', and one pool for large fish built of concrete and stone 2'x16'x20'.

The plot of ground surrounding the house and hatchery was in such condition that it required a considerable amount of



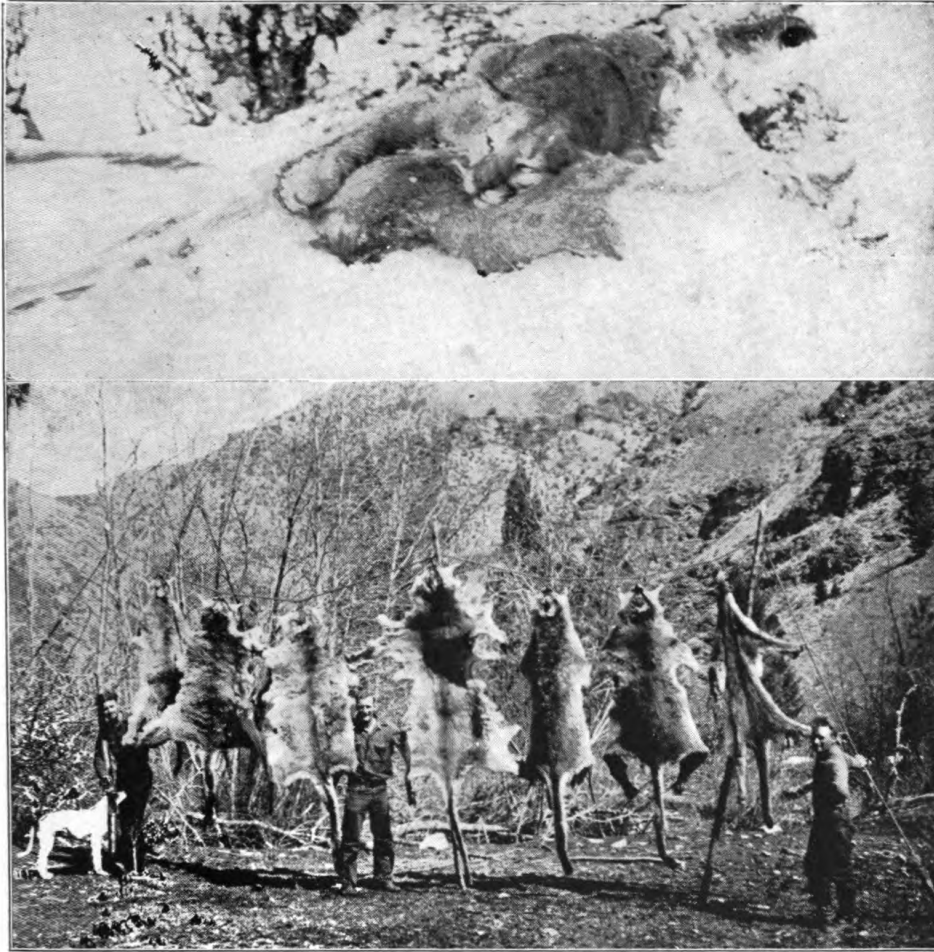
Chinook Salmon

work to improve the landscape. The lawn was levelled, terraced and seeded. Six evergreen trees were planted and 100 feet of stepping stone walks laid to the residence and fish pool, 430 feet of water pipe was laid to the residence and fish pool on the lawn for sprinkling and domestic use. A gravel walk between the old and new rearing ponds, five feet wide and 125 feet long was built so that visitors might walk between the ponds and inspect the fish. 1920 sq. yds. of driveway and parking space was surfaced with gravel, 250 feet of rock guard railing was placed between the driveway and lawn. House, hatchery and troughs were all freshly painted. With the added equipment this station will make a better showing in this district in the future. In 1932 no extensive improvements were made, but a number of minor changes benefitted the operation of this station.

The following table shows the number and varieties of fish distributed from this hatchery during the biennium:

VARIETY	SIZE	1931	1932
Rainbow.....	3" to 7" fingerlings	50,000	759,030
Native.....	3" to 6" fingerlings		232,075
Eastern Brook.....	2" to 4" fingerlings	180,000	171,580
Totals		230,000	1,162,685
Total for 1931 and 1932			1,392,685

In addition to the above we still have on hand approximately 688,440 Rainbow, Native and Eastern Brook fingerlings from 1 to 4 inches long.



Above—Big cat dropped by one of the department's predatory animal hunters on the Middle Fork of the Salmon River. Below—These hides of cougar taken in the Salmon country represent the lives of many deer saved through the winter season.

Exhibit "A"**OPERATION IN FUNDS****For the Biennium Beginning Dec. 15, 1930, and Ending Dec. 15, 1932****GAME FUND****Receipts**

Balance on hand Dec. 15, 1930		\$ 98,983.16
From sale of Licenses and Permits, 1931..	\$206,001.80	
From sale of Licenses and Permits, 1932..	149,365.70	
	<hr/>	
		\$355,367.50
Other Cash Receipts, 1931	13,063.19	
Other Cash Receipts, 1932	4,808.64	
Cancellation of Warrants	148.14	
Transfer from Suspense Fund	3,467.40	
Transfer from Revolving Fund, 1931.....	4,000.00	
Transfer from Revolving Fund, 1932.....	1,000.00	
	<hr/>	
		26,487.37
		<hr/>
		381,854.87
		<hr/>
		\$480,838.03

Disbursements

Warrants Issued in 1931	\$249,928.34	
Warrants Issued in 1932	191,088.85	
Transfer to Game Fund (Canc. War- rants)	32.48	
	<hr/>	
Transfer to Game Fund from Suspense Fund (T. C. Young, License Acct.)....	1,007.80	\$441,049.67
Transfer to Pred. A. Fund, 1931.....	6,000.00	
Transfer to Pred. A. Fund, 1932.....	88.00	
Transfer to Revolving Fund	5,000.00	
Balance Dec. 15, 1932	27,692.56	
	<hr/>	
		39,788.36
		<hr/>
		\$480,838.03

GAME WARDEN'S PREDATORY ANIMAL FUND**Receipts**

Balance in Fund Dec. 15, 1930		\$ 9,136.52
Sale of Pred. A. Pelts, 1931.....	\$172.25	
Sale of Pred. A. Pelts, 1932.....	169.48	
	<hr/>	
		\$ 341.73
Transfer from Game Fund		6,088.00
		<hr/>
		6,429.73
		<hr/>
		\$ 15,566.25

Disbursements

Warrants Issued, 1931	\$3,647.14	
Warrants Issued, 1932	7,653.53	
	<hr/>	
		\$11,300.67
Balance in Fund Dec. 15, 1932		4,265.58
		<hr/>
		\$ 15,566.25

GAME WARDEN'S SUSPENSE FUND

Receipts		
Received from W. W. Perrott (1931)	\$2,439.60	
Received from C. R. Tooker (Fur Farm Deposit)	100.00	
Received from J. L. Larsen (Fur Farm Deposit)	100.00	
Received from Geo. A. Miller (Fur Farm Deposit)	100.00	
Received from T. C. Young (License Account)	1,007.80	
		\$3,747.40
Disbursements		
Transfer to Game Fund, 1931	\$2,439.60	
Transfer to Game Fund, 1932	1,007.80	
Transfer to Game Fund (Fur Farm Deposits 1932)	20.00	
Warrants Issued 1932	280.00	
		\$3,747.40

Exhibit "B"

OPERATION IN FUNDS FOR THE YEAR 1931

GAME FUND

Receipts		
Balance in Fund December 15, 1930		\$ 98,983.16
From Sale of Licenses and Permits	\$206,001.80	
Other Cash Receipts	13,063.19	
Jan. 27, Transferred from Revolving Fund	1,000.00	
Transferred from Suspense Fund (W. W. Perrott)	2,439.60	
Warrants cancelled	27.50	
July 21, Transferred from Revolving Fund	1,000.00	
		223,532.09
		\$322,515.25
Disbursements		
Warrants Issued	\$249,928.34	
Transferred to Game Warden's Pred. A. Fund	6,000.00	
Feb. 4, Transferred to Revolving Fund	1,000.00	
July 2, Transferred to Revolving Fund	2,000.00	
Balance in Fund December 15, 1931	63,586.91	
		\$322,515.25

GAME WARDEN'S PREDATORY ANIMAL FUND

Receipts		
Balance in Fund December 15, 1930		\$ 9,136.52
Transferred from Game Fund	\$ 6,000.00	
From Sale of Pelts	172.25	
		6,172.25
		\$15,308.77
Disbursements		
Warrants Issued	\$ 3,647.14	
Balance in Fund December 15, 1931	11,661.63	
		\$15,308.77

GAME WARDEN'S SUSPENSE FUND

Receipts		
Received from W. W. Perrott	\$2,439.60	
C. R. Tooker Fur Farm Deposit	100.00	
		\$ 2,539.60
Disbursements		
Transferred to Game Fund	\$2,439.60	
Balance December 15, 1931	100.00	
		\$ 2,539.60

Exhibit "C"

Statement covering cash receipts of the Department of Fish and Game for the period beginning December 16, 1930, and ending December 15, 1931, including all moneys received from the sale of licenses of the series of 1931 and prior years, also miscellaneous revenues:

Receipts—License Sales		
No.	Class	Amount
88,275	Resident Fish and Game Licenses	\$167,722.50
55	Non-Resident Game Licenses	2,612.50
449	Non-Resident Bird Licenses	4,255.50
4,829	Non-Resident Fish Licenses	23,412.75
1	Alien Game License	71.25
33	Alien Fish Licenses	313.50
7	Alien Gun Licenses	33.25
1,112	Resident Trappers Licenses	5,232.00
7	Non-Resident Trappers' Licenses	166.25
8	Resident Sheep Licenses	190.00
1	Non-Resident Sheep License	47.50
3,412	Re-shipping Permits	1,364.80
22	Taxidermist Licenses	220.00
8	Selling and Shipping Permits	80.00
22	Private Pond Permits	220.00
98,241	Total Received from License Sales	\$206,001.80
Receipts—Other than from License Sales		
248	Fines	\$6,690.70
135	Confiscations	519.15
	Sale of Beaver Pelts	1,758.00
	Sale of Hens and Eggs	397.32
	Sale of Non-Game Fish	165.95
	Sale of Pelts	114.05
	Recovery on Lapwai Fire Loss	3,155.45
	Reimbursement, overpayment to Geo. E. Russell	5.50
	Reimbursement, overpayment to Carston Pkg. Co.	8.40
	Interest on License Acct. (Geo. Carter)78
	To adjust error in Revolving Fund	16.71
	Sale of Sacks	14.30
	Sale of Game (other than confiscations)	58.05
	Sale of Supplies	5.00
	Refund on Phone Calls	3.70
	Beaver Castorium	10.00
4	Class 1 Licenses Sold for 2-C	11.40
	Sale of Traps	4.38
	Building Show Pens	34.00
	Commission Saved	90.35
		\$ 13,063.19
	Total Cash Receipts of Game Fund	\$219,064.99

GAME WARDEN'S PREDATORY ANIMAL FUND

Sale of Predatory Animal Pelts	\$ 172.25	
		\$ 172.25

GAME WARDEN'S SUSPENSE FUND

From W. W. Perrott	\$2,439.60	
C. R. Tooker Fur Farm Deposit	100.00	
		2,539.60

Total Cash Receipts from All Sources **\$221,776.84**

Exhibit "D"

WARRANT ISSUE BY MONTH AND BY FUND

For the Year 1931

Month	Game Fund	Predatory	Total
Dec. 16, 1930, to Jan. 31, 1931	\$26,673.69	\$643.75	\$27,317.44
February	14,718.72	504.40	15,223.12
March	17,768.94	708.35	18,477.29
April	10,795.10	596.38	11,391.48
May	16,114.08	500.00	16,614.08
June	22,880.32	137.18	23,017.50
July	27,888.14		27,888.14
August	20,200.78	52.10	20,252.88
September	30,484.13		30,484.13
October	25,751.09		25,751.09
November	25,811.73	293.64	26,105.37
December 15, inc.	10,841.62	211.34	11,052.96
Total Warrant Issue	\$249,928.34	\$3,647.14	\$253,575.48

Exhibit "E"

TABULATION OF RECEIPTS FROM THE SALE OF LICENSES OF THE SERIES OF 1930-1931 RECEIVED BY THE DEPARTMENT DURING THE YEAR 1931

Series of 1930

No.	Class	Kind	Amount	Total
17,724	1-A	Resident Fish and Game License	@ 1.90	\$33,675.60
22	2-A	Non-resident Fish & Game Licenses	@ 23.75	1,045.00
229	2-B	Non-resident Bird Licenses	@ 9.50	2,175.50
702	2-C	Non-resident Fish Licenses	@ 4.75	3,809.50
14	3-B	Alien Fish Licenses	@ 9.50	133.00
7	3-C	Alien Gun Licenses	@ 4.75	33.25
874	1-D	Resident Trapping Licenses	@ 4.75	4,151.50
7	2-D	Non-resident Trappers Licenses	@ 23.75	166.25
6	4-A	Resident Sheep Licenses	@ 23.75	142.50
1	5-A	Non-resident Sheep Licenses	@ 47.50	47.50
1,774		Re-shipping Permits	@ .40	709.60
2		Taxidermist Licenses	@ 10.00	20.00
1		Selling and Shipping Permit	@ 10.00	10.00
3		Private Pond Permits	@ 10.00	30.00
21,366		Total for Series of 1930		\$46,149.20

Series of 1931		
70,551	1-A Resident Fish and Game Licenses	@ 1.90 134,046.90
33	2-A Non-resident Fish and Game Licenses @	23.75 1,567.50
220	2-B Non-resident Bird Licenses	@ 9.50 2,090.00
4,127	2-C Non-resident Fish Licenses	@ 4.75 19,603.25
1	3-A Alien Game License	@ 71.25 71.25
19	3-B Alien Fish Licenses	@ 9.50 180.50
238	1-D Resident Trappers Licenses	@ 4.75 1,130.50
2	4-A Resident Sheep Licenses	@ 23.75 47.50
1,638	Re-shipping Permits	@ .40 655.20
20	Taxidermist Licenses	@ 10.00 200.00
7	Selling and Shipping Permits	@ 10.00 70.00
19	Private Pond Permits	@ 10.00 190.00
<hr/>		
76,875	Total for Series of 1931	\$159,852.60
<hr/>		
98,241	Total for Series of 1930 and 1931.....	\$206,001.80

Exhibit "F"

OPERATION IN FUNDS FOR YEAR 1932

GAME FUND

Receipts

Balance in Fund December 15, 1931		\$ 63,586.91
From Sale of Licenses and Permits	\$149,365.70	
Other Cash Receipts	4,808.64	
Transferred from Revolving Fund	2,000.00	
Transferred from Suspense Fund (T. C. Young).....	1,007.80	
Transferred from Suspense Fund (Fur Farm Deposits)	20.00	
Warrants Cancelled	120.64	
		<hr/>
		157,322.78
		<hr/>
		\$220,909.69

Disbursements

Warrants Issued	\$191,088.85	
Transferred to Revolving Fund	1,000.00	
Transferred to Game Warden's Pred. A. Fund	88.00	
Transferred to Suspense Fund	1,007.80	
Transferred to Game Fund	32.48	
Balance December 15, 1932	27,692.56	
		<hr/>
		\$220,909.69

GAME WARDEN'S PREDATORY ANIMAL FUND

Receipts

Balance in Fund December 15, 1931		\$ 11,661.63
From Sale of Pred. A. Pelts	\$ 169.48	
Transferred from Game Fund	88.00	
		<hr/>
		257.48
		<hr/>
		\$ 11,919.11

Disbursements

Warrants Issued	\$ 7,653.53	
Balance in Fund December 15, 1932	4,265.58	
		<hr/>
		\$ 11,919.11

GAME WARDEN'S SUSPENSE FUND

Receipts			
Balance in Fund December 15, 1931		\$	100.00
Received from J. L. Larsen (Dep. on Fur Farm)	\$	100.00	
Received from Geo. A. Miller (Dep. on Fur Farm)....		100.00	
Received from T. C. Young (License Account)		1,007.80	
			<u>1,207.80</u>
		\$	1,307.80
Disbursements			
Transfer to Game Fund (T. C. Young Account)	\$	1,007.80	
Transfer to Game Fund (Fur Farm Deposits)		20.00	
Warrants Issued		280.00	
			<u>1,307.80</u>
		\$	1,307.80

Exhibit "G"

STATEMENT COVERING CASH RECEIPTS OF THE DEPARTMENT OF
FISH AND GAME FOR THE PERIOD BEGINNING DECEMBER
16, 1931, AND ENDING DECEMBER 15, 1932Including All Moneys Received from the Sale of
Licenses, Permits and Miscellaneous Receipts

Receipts—License Sales			
No.	Class or Kind	Amount	Total
65,368	Resident Fish and Game Licenses	\$124,199.20	
36	Non-resident Fish and Game Licenses	1,710.00	
275	Non-resident Bird Licenses	2,612.50	
3,195	Non-resident Fish Licenses	15,176.25	
2	Alien Fish and Game Licenses	142.50	
12	Alien Fish Licenses	114.00	
3	Alien Gun Licenses	14.25	
889	Resident Trappers' Licenses	4,222.75	
3	Non-resident Trappers' Licenses	71.25	
4	Resident Sheep Licenses	95.00	
3	Non-resident Sheep Licenses	142.50	
1,120	Re-shipping permits	448.00	
7	Taxidermist Licenses	70.00	
3	Selling and Shipping Permits	30.00	
26	Fur Farm Permits	137.50	
18	Private Pond Permits	180.00	
<u>70,964</u>	Total License and Permit Sales		\$149,365.70

Receipts—Other than from Licenses		
120	Fines	\$3,158.00
86	Confiscations	261.75
	Sale of Beaver Pelts	727.30
	Sale of Hens and Eggs	83.64
	Sale of Non-Game Fish	70.43
	Sale of Pelts (other than Predatory)	20.19
	Sale of Game (other than Confiscated)	49.50
	Refund on Phone Calls	1.95
	Sale of Traps	1.70
	Miscellaneous	8.00
	Class 1 Licenses Sold for 2-C	11.40
	Special—Fine in Lieu of License	15.00
	Reimbursement on Returned Lumber (Ed Rutledge)	2.32
	Refund—Amount paid Zornes on Forest Fire Work	107.60
	Refund—Overpaid on Invoice64
	Refund—Stopped payment on Check	33.64
	Refund—On Insurance	130.29
	Refund—Gasoline Tax59
	Sale of Hay	31.85
	Commission Saved	92.85
	Total Miscellaneous	\$ 4,808.64
	TOTAL RECEIPTS FOR GAME FUND	\$154,174.34
	GAME WARDEN'S PREDATORY ANIMAL FUND	
	Sale of Predatory Animal Pelts	\$ 257.48
	Total Game Warden's Pred. A. Fund	\$ 257.48
	SUSPENSE FUND	
	Deposit on Fur Farms	\$ 300.00
	T. C. Young—to apply on License Account	1,007.80
	Total Suspense Fund	1,307.80
		\$155,739.62
	Less Transfer out of Suspense Fund	1,027.80
	TOTAL CASH RECEIPTS	\$154,711.82

Exhibit "H"**WARRANTS ISSUED BY MONTHS AND BY FUNDS**

For the Year 1932

Month	Game Fund	Predatory	Suspense	Total
Dec. 16, 1931, to Jan. 30, 1932....	\$ 22,301.42	\$1,862.36	\$ 95.00	\$ 24,258.78
February	10,750.32	1,240.00	90.00	12,080.32
March	13,219.92	1,430.92	95.00	14,745.84
April	15,123.58	534.75		15,658.33
May	12,350.01	559.21		12,909.22
June	11,351.50	176.19		11,527.69
July	18,305.19	633.46		18,938.65
August	23,441.03	611.79		24,052.82
September	17,962.61	95.10		18,057.71
October	20,019.53	318.90		20,338.43
November	16,631.28	180.72		16,812.00
December 1 to 15	9,632.46	10.13		9,642.59
TOTAL WARRANT ISSUE	\$191,088.85	\$7,653.53	\$280.00	\$199,022.38

Exhibit "I"

TABULATION OF RECEIPTS FROM THE SALE OF LICENSES OF THE SERIES OF 1931 AND 1932, RECEIVED BY THE DEPARTMENT DURING THE YEAR OF 1932

Series of 1931		Each	Amount	Total
No.	Class			
8,944	1-A Resident Fish and Game	1.90	\$16,993.60	
11	2-A Non-resident Fish and Game	47.50	522.50	
113	2-B Non-resident Bird	9.50	1,073.50	
428	2-C Non-resident Fish	4.75	2,033.00	
4	3-B Alien Fish	9.50	38.00	
3	3-C Alien Gun	4.75	14.25	
758	1-D Resident Trapper	4.75	3,600.50	
3	2-D Non-resident Trapper	23.75	71.25	
4	4-A Resident Sheep	23.75	95.00	
762	Reshipping Permits40	304.80	
9	Fur Farm Permits		45.00	
11,039	Total for Series of 1931			\$ 24,791.40
Series of 1932				
56,424	1-A Resident Fish and Game	1.90	107,205.60	
25	2-A Non-resident Fish and Game	47.50	1,187.50	
162	2-B Non-resident Bird	9.50	1,539.00	
2,767	2-C Non-resident Fish	4.75	13,143.25	
2	3-A Alien Fish and Game	71.25	142.50	
8	3-B Alien Fish	9.50	76.00	
131	1-D Resident Trapper	4.75	622.25	
3	5-A Non-resident Sheep	47.50	142.50	
358	Reshipping Permits40	143.20	
3	Selling and Shipping Permits ..	10.00	30.00	
18	Private Pond Permits	10.00	180.00	
7	Taxidermist Licenses	10.00	70.00	
17	Fur Farm Permits		92.50	
59,925	Total for Series 1932			124,574.30
70,964	Total Receipts from License Sales			\$149,365.70

Exhibit "J"

COMPARATIVE STATEMENT OF ARRESTS
Showing Disposition of Cases Completed Within the Years Designated

	Year	Year	Year	Year
	1929	1930	1931	1932
Violations of Game Laws				
Fines paid	286	301	245	115
Jail sentences	13	21	42	47
Cases dismissed	7	4	29	22
Sentences suspended	9	7	17	22
Fines remitted by court	8	6	21	4
Acquittals	6		14	3
Otherwise disposed of	57	62	7	5
Total arrests for year	386	401	375	218
Total revenues from fines	\$8,677.75	\$9,179.00	\$6,690.70	\$3,138.00

Exhibit "K"**COMPARING THE NUMBER OF CONFISCATIONS BY YEARS AND REVENUE DERIVED FROM THE SALE OF CONFISCATED ARTICLES**

Year	No. of Confiscations	Amount
1927	65	427.45
1928	81	411.60
1929	120	726.35
1930	107	391.30
1931	135	519.15
1932	86	261.75

Exhibit "L"**COMPARATIVE STATEMENT SHOWING THE NUMBER OF VARIOUS KINDS AND CLASSES OF LICENSES SOLD FOR WHICH RE-MITTANCE THEREFOR WAS RECEIVED BY THE DEPARTMENT DURING THE YEAR INDICATED**

Kind	Year 1929	Year 1930	Year 1931	Year 1932
Resident Fish and Game	83,236	86,001	88,275	65,368
Non-resident Fish and Game	70	75	55	36
Non-resident Bird	365	416	449	275
Non-resident Fish	5,325	5,628	4,829	3,195
Tourist Fish	899			
Alien Fish and Game	2	2	1	2
Alien Fish	88	89	33	12
Alien Gun	8	12	7	3
Resident Trappers	1,663	1,594	1,112	889
Non-resident Trappers	6	8	7	3
Resident Mountain Sheep	7	3	8	4
Non-resident Mountain Sheep	2	13	1	3
Reshipping Permits	1,833	1,985	3,412	1,120
Taxidermist	17	20	22	7
Selling and Shipping	10	3	8	3
Fur Farm Permits				26
Private Pond Permits	13	19	22	18
Total by years	93,547	95,869	98,241	70,964

Exhibit "M"**COMPARATIVE STATEMENT OF REVENUE RECEIVED BY YEARS**

Year	Receipts from License Sales	Other Receipts	Total Receipts by Year
1928	\$178,486.00	\$19,108.15	\$197,594.15
1929	202,311.00	21,411.63	223,722.63
1930	208,383.65	13,908.25	222,291.90
1931	206,001.80	15,775.04	221,776.84
1932	149,365.70	5,346.12	154,711.82

Exhibit "N"**COMPARATIVE STATEMENT OF WARRANTS ISSUED BY YEARS AND BY FUNDS**

Year	Game Fund	Predatory Animal Fund	Total Warrants Issued by Years
1928	\$178,393.19	\$5,463.93	\$183,857.12
1929	209,526.78	5,854.60	215,381.38
1930	216,290.89	3,650.49	219,941.38
1931	249,928.34	3,647.14	253,575.48
1932	191,088.85	7,653.55	198,742.40

Exhibit "O"**COMPARATIVE STATEMENT OF COST OF OPERATION**

For Years 1929, 1930, 1931 and 1932 for the Particular Activities Shown

Purpose	Year 1929	Year 1930	Year 1931	Year 1932
General Administration	\$126,655.68	\$122,364.04	\$143,615.18	\$113,994.33
Ashton Hatchery	12,982.30	12,225.60	10,209.44	6,933.86
American Falls Hatchery			6,798.64	7,850.10
Cascade Hatchery	3,233.76	2,452.85	2,539.28	2,213.74
Coeur d'Alene Hatchery	4,173.48	6,808.97	5,863.69	4,926.53
Evergreen Hatchery	2,542.96	2,360.31	5,028.07	3,624.65
Grangeville Hatchery	2,985.64	2,128.32	1,797.25	951.37
Hay Spur Hatchery	13,403.58	12,163.05	9,223.47	7,389.04
Henry's Lake Hatchery	2,370.93	1,427.62	1,695.51	875.75
Mackay Hatchery	2,347.41	2,387.94	5,386.26	2,121.30
Pocatello Hatchery	1,963.43	4,850.45	3,955.77	353.82
Sandpoint Hatchery	9,696.89	7,162.34	6,661.75	4,254.07
Twin Falls Hatchery	1,614.48	3,171.77	7,692.53	4,962.04
Lapwai Game Farm	10,255.33	16,322.06	16,795.13	12,582.23
Fish Distribution	7,455.65	9,425.29	10,825.67	6,669.71
Spawn-taking	4,215.46	4,723.63	4,878.83	2,941.76
Eagle Rearing Pens			2,493.89	1,698.90
Jerome Rearing Pens				2,511.72
Rearing Ponds	3,629.80	6,316.65	4,467.98	4,233.93
Predatory Animal Control ..	5,854.60	3,650.49	3,647.14	7,653.53
Game Warden's Suspense Fund				280.00
Total Expenditures for Year	\$215,381.38	\$219,941.38	\$253,575.48	\$199,022.38

CLASSIFICATION OF DISBURSEMENTS

Fish and Game—General
Year 1931

A. PERSONAL SERVICES		
A1	Salaries of regular officers and employees	\$ 85,152.64
A2	Extra help	2,002.52
A4	Special services	683.30
	Total for Personal Services	\$ 87,838.46
B. SERVICES OTHER THAN PERSONAL		
B1	Transportation of persons	\$ 27,906.82
B2	Transportation of things	796.08
B3	Board and lodging	3,114.71
B4	Repairs to equipment and structures	1,267.54
B5	Communication service	2,136.54
B6	Printing	4,655.76
B7	Publication of notices	410.68
B9	Special and miscellaneous services	379.25
	Total for Services Other Than Personal	\$ 40,667.38
D. SUPPLIES		
D1	Office, educational and scientific supplies	\$ 850.30
D2	Fuels and illuminants	1,303.67
D3	Mechanics, engineers and electricians supplies	513.76
D4	Household supplies	4.93
D5	Wearing apparel	17.99
D6	Forage and other supplies for animals, fish, birds, etc.	3,788.82
D8	Explosives	8.74
D9	Agriculturists and florists supplies, etc.	10.00
	Total for Supplies	\$ 6,498.21
E. EQUIPMENT		
	Total for Equipment	\$ 5,718.17
F. STRUCTURES		
	Total for Structures	\$ 86.88
H. REFUNDING		
	Total for Refunds	\$ 643.13
J. FIXED CHARGES		
	Total for Fixed Charges	\$ 2,162.95
RECAPITULATION		
A	Personal Services	\$ 87,838.46
B	Services Other Than Personal	40,667.38
D	Supplies	6,498.21
E	Equipment	5,718.17
F	Structures	86.88
H	Refunds	643.13
J	Fixed Charges	2,162.95
	Total Expenditures for the year 1931	\$143,615.18

CLASSIFICATION OF DISBURSEMENTS

Ashton Hatchery
Year 1931

A. PERSONAL SERVICES

A1	Salaries of regular officers and employees	\$ 2,567.10
A2	Extra help	159.61
A4	Special services	12.00
Total for Personal Services		\$ 2,738.71

B. SERVICES OTHER THAN PERSONAL

B1	Transportation of persons	\$ 2.79
B2	Transportation of things	82.88
B3	Board and lodging	23.25
B4	Repairs to structures and equipment	220.79
B5	Communication services	71.68
B8	Furnishing of heat, light, power and electricity	66.40
B9	Special and miscellaneous services other than personal	82.00
Total for Services Other Than Personal		\$ 549.79

D. SUPPLIES

D1	Office, educational and scientific supplies	\$ 16.40
D2	Fuels and illuminants	195.20
D3	Mechanics, engineers and electricians supplies	40.66
D4	Household supplies	21.04
D6	Fish food	5,014.19
D8	Explosives	53.80
Total for Supplies		\$ 5,341.29

E. EQUIPMENT

	Total for Equipment	\$ 1,069.35
--	---------------------------	-------------

F. STRUCTURES

	Total for Structures	\$ 510.30
--	----------------------------	-----------

RECAPITULATION

A	Personal Services	\$ 2,738.71
B	Services Other Than Personal	549.79
D	Supplies	5,341.29
E	Equipment	1,069.35
F	Structures	510.30
Total Expenditures for the Year 1931		\$ 10,209.44

CLASSIFICATION OF DISBURSEMENTS**American Falls Hatchery
Year 1931****A. PERSONAL SERVICES**

A1	Salaries of regular officers and employees	\$	250.00
	Total for Personal Services	\$	250.00

B. SERVICES OTHER THAN PERSONAL

B5	Communication services	\$	7.30
	Total for Services Other Than Personal	\$	7.30

D. SUPPLIES

D1	Office supplies	\$.75
D2	Fuels and illuminants		1.20
D3	Mechanics, engineers and electricians supplies		3.70
D5	Wearing apparel		14.94
	Total for Supplies	\$	20.59

F. STRUCTURES

	Total for building material and labor	\$	20.75
--	---	----	-------

G. LANDS

	Total for land	\$	6,500.00
--	----------------------	----	----------

RECAPITULATION

A	Personal Services	\$	250.00
B	Services Other Than Personal		7.30
D	Supplies		20.59
F	Structures		20.75
G	Lands		6,500.00
	Total Expenditures for Year 1931	\$	6,798.64

CLASSIFICATION OF DISBURSEMENTS

Cascade Hatchery
Year 1931

A. PERSONAL SERVICES

A1	Salaries of regular officers and employees	\$ 1,500.00
A2	Extra help	6.50
	Total for Personal Services	\$ 1,506.50

B. SERVICES OTHER THAN PERSONAL

B1	Transportation persons	\$ 6.46
B2	Transportation things	90.95
B3	Board and lodging	2.50
B4	Repairs to structures and equipment	94.42
B5	Communication services	68.95
	Total for Services Other Than Personal	\$ 263.28

D. SUPPLIES

D1	Scientific supplies	\$ 24.40
D2	Fuels and illuminants	145.42
D3	Mechanics, engineers and electricians supplies	30.52
D4	Household and cleaning supplies	5.52
D6	Fish food	204.31
D8	Explosives	25.64
	Total for Supplies	\$ 435.81

E. EQUIPMENT

	Total for Equipment	\$ 25.00
--	----------------------------------	-----------------

F. STRUCTURES

	Total for Structures	\$ 261.69
--	-----------------------------------	------------------

J. FIXED CHARGES

	Total for Fixed Charges	\$ 47.00
--	--------------------------------------	-----------------

RECAPITULATION

A	Personal Services	\$ 1,506.50
B	Services Other Than Personal	263.28
D	Supplies	435.81
E	Equipment	25.00
F	Structures	261.69
J	Fixed Charges	47.00
	Total Expenditures for the Year 1931	\$ 2,539.28

CLASSIFICATION OF DISBURSEMENTS

Coeur d'Alene Hatchery
Year 1931

A. PERSONAL SERVICES

A1	Salaries of regular officers and employees	\$ 2,315.00
A2	Extra help	200.80
	Total for Personal Services	\$ 2,515.80

B. SERVICES OTHER THAN PERSONAL

B2	Transportation of things	\$ 71.47
B3	Board and lodging	1.15
B4	Repairs to structures and equipment	298.94
B5	Communication services	89.42
B8	Furnishing heat, light, power and electricity	500.23
B9	Special and miscellaneous services other than personal	30.95
	Total for Services Other Than Personal	\$ 992.16

D. SUPPLIES

D1	Office and scientific supplies	\$ 5.90
D2	Fuels and illuminants	54.45
D3	Mechanics, engineers and electricians supplies	55.23
D4	Household and cleaning supplies	8.10
D5	Wearing apparel	23.01
D6	Fish food	2,096.70
D8	Explosives	26.06
	Total for Supplies	\$ 2,269.45

F. STRUCTURES

	Total for Material and Labor	\$ 86.28
--	---	-----------------

RECAPITULATION

A	Personal Services	\$ 2,515.80
B	Services Other Than Personal	992.16
D	Supplies	2,269.45
F	Structures	86.28
	Total Expenditures for the Year 1931	\$ 5,863.69

CLASSIFICATION OF DISBURSEMENTS

**Evergreen Hatchery
Year 1931**

A. PERSONAL SERVICES

A1	Salary of Regular officers and employees	\$ 1,500.00
A2	Extra help	12.10
A4	Special services	5.00
	Total for Personal Services	\$ 1,517.10

B. SERVICES OTHER THAN PERSONAL

B1	Transportation of persons	\$ 5.36
B2	Transportation of things	82.04
B4	Repairs to structures and equipment	129.61
B5	Communication services	71.04
B9	Special and miscellaneous services other than personal	34.70
	Total for Services Other Than Personal	\$ 322.75

D. SUPPLIES

D1	Scientific supplies	\$ 5.30
D2	Fuels and illuminants	99.57
D3	Mechanics, engineers and electricians supplies	23.28
D4	Household and cleaning supplies	6.00
D6	Fish food	989.61
D8	Explosives	26.64
	Total for Supplies	\$ 1,150.40

E. EQUIPMENT

	Total for Equipment	\$ 30.72
--	----------------------------------	-----------------

F. STRUCTURES

	Total for building material and labor	\$ 2,007.10
--	--	--------------------

RECAPITULATION

A	Personal Services	\$ 1,517.10
B	Services Other Than Personal	322.75
D	Supplies	1,150.40
E	Equipment	30.72
F	Structures	2,007.10
	Total Expenditures for the Year 1931	\$ 5,028.07

CLASSIFICATION OF DISBURSEMENTS

Grangeville Hatchery
Year 1931

A. PERSONAL SERVICES

A1	Salaries of regular officers and employees	\$ 1,036.29
A2	Extra help	5.00
	Total for Personal Services	\$ 1,041.29

B. SERVICES OTHER THAN PERSONAL

B1	Transportation of persons	\$ 6.21
B2	Transportation of things	48.88
B3	Board and lodging	7.00
B4	Repairs to structures and equipment	262.73
B5	Communication services	9.35
B9	Special and miscellaneous services other than personal45
	Total for Services Other Than Personal	\$ 334.62

D. SUPPLIES

D1	Scientific supplies	\$ 2.50
D2	Fuels and illuminants	267.02
D3	Mechanics, engineers and electricians supplies	19.87
D4	Household and cleaning supplies	5.45
D6	Fish food	78.50
	Total for Supplies	\$ 373.34

F. STRUCTURES

Total for building material and labor	\$ 48.00
---	----------

RECAPITULATION

A	Personal Services	\$ 1,041.29
B	Services Other Than Personal	334.62
D	Supplies	373.34
F	Structures	48.00
	Total Expenditures for the Year 1931	\$ 1,797.25

CLASSIFICATION OF DISBURSEMENTS

Hay Spur Hatchery
Year 1931

A. PERSONAL SERVICES

A1	Salaries of regular officers and employees	\$ 2,703.23
A2	Extra help	29.50
A4	Special services	2.50
Total for Personal Services		\$ 2,735.23

B. SERVICES OTHER THAN PERSONAL

B2	Transportation of things	\$ 32.31
B3	Board and lodging	2.00
B4	Repairs to structures and equipment	213.75
B5	Communication services	101.65
B8	Furnishing of heat, light, power and electricity	62.49
B9	Special and miscellaneous services other than personal	143.00
Total for Services Other Than Personal		\$ 555.20

D. SUPPLIES

D1	Office and scientific supplies	\$ 40.55
D2	Fuels and illuminants	714.23
D3	Mechanics, engineers and electricians supplies	69.95
D4	Household and cleaning supplies	37.12
D6	Fish food	4,924.13
D8	Explosives	52.20
Total for Supplies		\$ 5,838.18

E. EQUIPMENT

	Total for Equipment	\$ 81.36
--	---------------------------	----------

J. FIXED CHARGES

	Total for Fixed Charges	\$ 13.50
--	-------------------------------	----------

RECAPITULATION

A	Personal Services	\$ 2,735.25
B	Services Other Than Personal	555.20
D	Supplies	5,838.18
E	Equipment	81.36
J	Fixed Charges	13.50
Total for Expenditures, Year 1931		\$ 9,223.47

CLASSIFICATION OF DISBURSEMENTS

Henry's Lake Hatchery
Year 1931

A. PERSONAL SERVICES

A1	Salaries of regular officers and employees	\$ 1,125.00
	Total for Personal Services	\$ 1,125.00

B. SERVICES OTHER THAN PERSONAL

B2	Transportation of things	\$ 26.95
B4	Repairs to structures and equipment	43.75
B5	Communication services	1.00
B9	Special and miscellaneous services other than personal	8.00
	Total for Services Other Than Personal	\$ 79.70

D. SUPPLIES

D1	Scientific supplies	\$ 2.70
D2	Fuels and illuminants	68.68
D3	Mechanics, engineers and electricians supplies	15.73
D5	Wearing apparel	22.00
D6	Fish food	251.83
	Total for Supplies	\$ 360.94

E. EQUIPMENT

	Total for Equipment	\$ 38.81
--	---------------------------	----------

F. STRUCTURES

	Total for material and labor	\$ 69.06
--	------------------------------------	----------

J. FIXED CHARGES

	Total for Fixed Charges	\$ 22.00
--	-------------------------------	----------

RECAPITULATION

A	Personal Services	\$ 1,125.00
B	Services Other Than Personal	79.70
D	Supplies	360.94
E	Equipment	38.81
F	Structures	69.06
J	Fixed Charges	22.00
	Total Expenditures for the Year 1931	\$ 1,695.51

CLASSIFICATION OF DISBURSEMENTS

Mackay Hatchery
Year 1931

A. PERSONAL SERVICES

A1	Salaries of regular officers and employees	\$ 1,500.00
A2	Extra help	205.00
	Total for Personal Services	\$ 1,705.00

B. SERVICES OTHER THAN PERSONAL

B2	Transportation of things	\$ 55.84
B4	Repairs to structures and equipment	120.50
B5	Communication services	8.97
B6	Signs and lettering	2.25
	Total for Services Other Than Personal	\$ 187.56

D. SUPPLIES

D2	Fuels and illuminants	\$ 118.77
D3	Mechanics, engineers and electricians supplies	15.72
D4	Household and cleaning supplies	1.75
D5	Wearing apparel	6.95
D6	Fish food	772.67
D8	Explosives	25.95
	Total for Supplies	\$ 941.81

E. EQUIPMENT

	Total for Equipment	\$ 609.46
--	----------------------------------	------------------

F. STRUCTURES

	Total for labor and material	\$ 1,942.43
--	---	--------------------

RECAPITULATION

A	Personal Services	\$ 1,705.00
B	Services Other Than Personal	187.56
D	Supplies	941.81
E	Equipment	609.46
F	Structures	1,942.45
	Total Expenditures for the Year 1931	\$ 5,386.26

CLASSIFICATION OF DISBURSEMENTS**Pocatello Hatchery
Year 1931****A. PERSONAL SERVICES**

A1	Salaries of regular officers and employees	\$ 1,500.00
	Total for Personal Services	\$ 1,500.00

B. SERVICES OTHER THAN PERSONAL

B1	Transportation of persons	\$ 133.60
B2	Transportation of things	34.33
B4	Repairs to structures and equipment	21.15
B5	Communication services	3.05
B9	Special and miscellaneous services other than personal	3.75
	Total for Services Other Than Personal	\$ 195.88

D. SUPPLIES

D1	Scientific supplies	\$ 5.55
D2	Fuels and illuminants	101.52
D3	Mechanics, engineers and electricians supplies	23.78
D4	Household and cleaning supplies	15.97
D5	Wearing apparel	6.87
D6	Fish food	2,026.95
D8	Explosives	9.75
	Total for Supplies	\$ 2,190.39

E. EQUIPMENT

	Total for Equipment	\$ 69.50
--	---------------------------	----------

RECAPITULATION

A	Personal Services	\$ 1,500.00
B	Services Other Than Personal	195.88
D	Supplies	2,190.39
E	Equipment	69.50
	Total Expenditures for the year 1931	\$ 3,955.77

CLASSIFICATION OF DISBURSEMENTS

**Sandpoint Hatchery and
Ruby Creek Rearing Pond
Year 1931**

A. PERSONAL SERVICES

A1	Salaries of regular officers and employees	\$ 2,450.76
A2	Extra help	151.93
	Total for Personal Services	\$ 2,602.69

B. SERVICES OTHER THAN PERSONAL

B1	Transportation of persons	\$ 22.29
B2	Transportation of things	68.58
B3	Board and lodging	1.00
B4	Repairs to structures and equipment	701.54
B5	Communication services	48.12
B9	Special and miscellaneous services other than personal	31.50
	Total for Services Other Than Personal	\$ 873.03

D. SUPPLIES

D1	Scientific supplies	\$ 2.70
D2	Fuels and illuminants	370.97
D3	Mechanics, engineers and electricians supplies	113.20
D4	Household and cleaning supplies	16.05
D5	Wearing apparel	39.12
D6	Fish food	1,718.00
D8	Explosives	50.00
	Total for Supplies	\$ 2,310.04

E. EQUIPMENT

	Total for Equipment	\$ 633.27
--	----------------------------------	------------------

F. STRUCTURES

	Total for building material and labor	\$ 228.32
--	--	------------------

J. FIXED CHARGES

	Total for Fixed Charges	\$ 14.40
--	--------------------------------------	-----------------

RECAPITULATION

A	Personal Services	\$ 2,602.69
B	Services Other Than Personal	873.03
D	Supplies	2,310.04
E	Equipment	633.27
F	Structures	228.32
J	Fixed Charges	14.40
	Total Expenditures for the year 1931	\$ 6,661.75

CLASSIFICATION OF DISBURSEMENTS

**Twin Falls Hatchery
Year 1931**

A. PERSONAL SERVICES

A1	Salaries of regular officers and employees	\$ 1,675.00
A2	Extra help	9.90
	Total for Personal Services	\$ 1,684.90

B. SERVICES OTHER THAN PERSONAL

B1	Transportation of persons	\$ 24.95
B2	Transportation of things	94.64
B3	Board and lodging	11.80
B4	Repairs of structures and equipment	11.20
B5	Communication services	22.49
B8	Furnishing of heat, light, power and electricity	39.95
B9	Special and miscellaneous services other than personal	18.90
	Total for Services Other Than Personal	\$ 223.93

D. SUPPLIES

D1	Scientific supplies	\$ 7.00
D2	Fuels and illuminants	20.00
D3	Mechanics, engineers and electricians supplies	11.84
D4	Household and cleaning supplies	2.84
D6	Fish food	1,804.25
D9	Agriculturists and florists supplies, etc.	6.50
	Total for Supplies	\$ 1,852.43

E. EQUIPMENT

Total for Equipment	\$ 242.20
---------------------------	-----------

F. STRUCTURES

Total for material and labor	\$ 3,689.07
------------------------------------	-------------

RECAPITULATION

A	Personal Services	\$ 1,684.90
B	Services Other Than Personal	223.93
D	Supplies	1,852.43
E	Equipment	242.20
F	Structures	3,689.07
	Total Expenditures for the year 1931	\$ 7,692.53

CLASSIFICATION OF DISBURSEMENTS

Lapwai Game Farm
Year 1931

A. PERSONAL SERVICES

A1	Salaries of regular officers and employees	\$ 4,827.74
A2	Extra and special services	2,102.42
	Total for Personal Services	\$ 6,930.16

B. SERVICES OTHER THAN PERSONAL

B1	Transportation of persons	\$ 151.44
B2	Transportation of things.....	407.70
B3	Board and lodging	20.25
B4	Repairs to structures and equipment	156.81
B5	Communication services	96.89
B6	Printing	8.60
B7	Publication of notices	5.25
	Total for Services Other Than Personal	\$ 846.94

D. SUPPLIES

D1	Office and scientific supplies	\$ 142.07
D2	Fuels and illuminants	592.46
D3	Mechanics, engineers and electricians supplies	145.55
D4	Household and cleaning supplies	54.92
D6	Food for birds	2,029.81
D8	Explosives	12.37
D9	Agriculturists and florists supplies	8.17
	Total for Supplies	\$ 2,985.35

E. EQUIPMENT

	Total for Equipment	\$ 3,282.85
--	----------------------------------	--------------------

F. STRUCTURES

	Total for building material and labor	\$ 2,530.43
--	--	--------------------

J. FIXED CHARGES

	Total for Fixed Charges	\$ 219.40
--	--------------------------------------	------------------

RECAPITULATION

A	Personal Services	\$ 6,930.16
B	Services Other Than Personal	846.94
D	Supplies	2,985.35
E	Equipment	3,282.85
F	Structures	2,530.43
J	Fixed Charges	219.40
	Total Expenditures for the year 1931	\$ 15,795.13

CLASSIFICATION OF DISBURSEMENTS

**Spawn-taking
Year 1931**

A. PERSONAL SERVICES

A1	Salaries of regular officers and employees	\$	3,055.00
A2	Extra help		1,366.77
	Total for Personal Services	\$	4,421.77

B. SERVICES OTHER THAN PERSONAL

B1	Transportation of persons	\$	70.98
B2	Transportation of things		16.75
B3	Board and lodging		76.38
B4	Repairs to structures and equipment		12.96
B5	Communication services39
B9	Special and miscellaneous services other than personal		6.50
	Total for Services Other Than Personal	\$	183.96

D. SUPPLIES

D2	Fuels and illuminants	\$	91.63
D3	Mechanics, engineers and electricians supplies		45.77
D4	Household and cleaning supplies		13.24
	Total for Supplies	\$	150.64

E. EQUIPMENT

	Total for Equipment	\$	57.83
--	---------------------------	----	-------

F. STRUCTURES

	Total for building material and labor	\$	24.13
--	---	----	-------

J. FIXED CHARGES

	Total for Fixed Charges	\$	40.50
--	-------------------------------	----	-------

RECAPITULATION

A	Personal Services	\$	4,421.77
B	Services Other Than Personal		183.96
D	Supplies		150.64
E	Equipment		57.83
F	Structures		24.13
J	Fixed Charges		40.50
	Total Expenditures for the year 1931	\$	4,878.83

CLASSIFICATION OF DISBURSEMENTS

**Rearing Ponds
Year 1931**

A. PERSONAL SERVICES

A1	Salaries of regular officers and employees	\$ 1,763.94
A2	Extra help	28.46
A4	Special services	4.50
	Total for Personal Services	\$ 1,796.90

B. SERVICES OTHER THAN PERSONAL

B1	Transportation of persons	\$ 48.68
B2	Transportation of things	140.50
B3	Board and lodging	29.50
B4	Repairs to structures and equipment	140.75
B5	Communication services90
B9	Special and miscellaneous services other than personal	36.75
	Total for Services Other Than Personal	\$ 397.08

D. SUPPLIES

D1	Office and scientific supplies	\$ 35.05
D2	Fuels and illuminants	31.94
D3	Mechanics, engineers and electricians supplies	29.63
D4	Household and cleaning supplies	19.67
D6	Fish food	1,791.77
D8	Explosives90
	Total for Supplies	\$ 1,908.96

E. EQUIPMENT

	Total for Equipment	\$ 86.34
--	---------------------------	----------

F. STRUCTURES

	Total for building material and labor	\$ 264.10
--	---	-----------

J. FIXED CHARGES

	Total for Fixed Charges	\$ 14.60
--	-------------------------------	----------

RECAPITULATION

A	Personal Services	\$ 1,796.90
B	Services Other Than Personal	397.08
D	Supplies	1,908.96
E	Equipment	86.34
F	Structures	264.10
J	Fixed Charges	14.60
	Total Expenditures for the year 1931	\$ 4,467.98

CLASSIFICATION OF DISBURSEMENTS

**Eagle Rearing Pens
Year 1931**

A. PERSONAL SERVICES

A1	Salaries of regular officers and employees	\$	631.00
A2	Extra help		8.00
	Total for Personal Services	\$	639.00

B. SERVICES OTHER THAN PERSONAL

B1	Transportation of persons	\$	50.86
B2	Transportation of things		148.41
B3	Board and lodging		1.00
	Total for Services Other Than Personal	\$	200.27

D. SUPPLIES

D1	Scientific supplies	\$.75
D2	Fuels and illuminants		5.00
D3	Mechanics, engineers and electricians supplies		15.21
D4	Household and cleaning supplies		6.65
D6	Feed for birds		176.92
	Total for Supplies	\$	204.53

E. EQUIPMENT

	Total for Equipment	\$	35.82
--	---------------------------	----	-------

F. STRUCTURES

	Total for material and labor	\$	1,414.27
--	------------------------------------	----	----------

RECAPITULATION

A	Personal Services	\$	639.00
B	Services Other Than Personal		200.27
D	Supplies		204.53
E	Equipment		35.82
F	Structures		1,414.27
	Total Expenditures for the year 1931	\$	2,493.89

CLASSIFICATION OF DISBURSEMENTS

Fish Distribution
Year 1931

A. PERSONAL SERVICES

A1	Salaries of regular officers and employees	\$ 3,871.03
A2	Extra and special services	39.50
	Total for Personal Services	\$ 3,910.53

B. SERVICES OTHER THAN PERSONAL

B1	Transportation of persons	\$ 14.60
B2	Transportation of things	78.04
B3	Board and lodging	1,495.12
B4	Repairs to equipment	1,391.87
B5	Communication services	48.00
B9	Special and miscellaneous services other than personal	265.06
	Total for Services Other Than Personal	\$ 3,292.69

D. SUPPLIES

D1	Scientific supplies	\$ 24.10
D2	Fuels and illuminants	1,266.44
D3	Mechanics, engineers and electricians supplies	320.86
D4	Household and cleaning supplies	1.00
	Total for Supplies	\$ 1,612.40

E. EQUIPMENT

	Total for Equipment	\$ 1,855.32
--	----------------------------------	--------------------

J. FIXED CHARGES

	Total for Fixed Charges	\$ 154.73
--	--------------------------------------	------------------

RECAPITULATION

A	Personal Services	\$ 3,910.53
B	Services Other Than Personal	3,292.69
D	Supplies	1,612.40
E	Equipment	1,855.32
J	Fixed Charges	154.73
	Total Expenditures for the year 1931	\$ 10,825.67

CLASSIFICATION OF DISBURSEMENTS**Predatory Animal Fund
Year 1931****A. PERSONAL SERVICES**

A1	Salaries of regular officers and employees	\$ 3,297.57
	Total for Personal Services	\$ 3,297.57

B. SERVICES OTHER THAN PERSONAL

B1	Transportation of persons	\$ 16.00
B2	Transportation of things	34.84
B3	Board and lodging	3.40
B5	Communication services	1.45
B9	Special and miscellaneous services other than personal	283.68
	Total for Services Other Than Personal	\$ 339.37

D. SUPPLIES

D1	Scientific supplies	\$ 7.70
	Total for Supplies	\$ 7.70

J. FIXED CHARGES

	Total for Fixed Charges	\$ 2.50
--	--------------------------------------	----------------

RECAPITULATION

A	Personal Services	\$ 3,297.57
B	Services Other Than Personal	339.37
D	Supplies	7.70
J	Fixed Charges	2.50
	Total Expenditures for the year 1931	\$ 3,647.14

RECAPITULATION

A	Personal Services	\$129,756.61
B	Services Other Than Personal	50,512.89
D	Supplies	36,452.46
E	Equipment	13,963.50
F	Structures	13,068.81
G	Lands	6,500.00
H	Refunds	643.13
J	Fixed Charges	2,678.08
	TOTAL OF ALL EXPENDITURES FOR 1931	\$253,575.48

CLASSIFICATION OF DISBURSEMENTS

Fish and Game—General
Year 1932

A. PERSONAL SERVICES

A1	Salaries of regular officers and employees	\$ 70,955.26
A2	Extra help	1,177.88
A4	Special services	149.42
	Total for Personal Services	\$ 72,282.56

B. SERVICES OTHER THAN PERSONAL

B1	Transportation of persons	\$ 21,239.81
B2	Transportation of things	779.31
B3	Board and lodging	3,120.95
B4	Repairs to equipment and structures	1,347.14
B5	Communication services	1,664.63
B6	Printing, typewriting, engraving and binding	2,018.10
B7	Publication of notices	141.80
B9	Special and miscellaneous services other than personal	81.93
	Total for Services Other Than Personal	\$ 30,393.67

D. SUPPLIES

D1	Office, educational and scientific supplies	\$ 533.56
D2	Fuels and illuminants	1,682.35
D3	Mechanics, engineers and electricians supplies	567.32
D4	Household supplies	34.31
D5	Wearing apparel	12.50
D6	Forage and other supplies for animals, fish, birds, etc.	3,527.37
D7	Provisions	11.73
D8	Explosives	6.30
	Total for Supplies	\$ 6,375.44

E. EQUIPMENT

	Total for Equipment	\$ 2,060.45
--	----------------------------------	--------------------

F. STRUCTURES

	Total for Structures	\$ 181.09
--	-----------------------------------	------------------

H. REFUNDS

	Total for Refunds	\$ 424.93
--	--------------------------------	------------------

J. FIXED CHARGES

	Total for Fixed Charges	\$ 2,276.19
--	--------------------------------------	--------------------

RECAPITULATION

A	Personal Services	\$ 72,282.56
B	Services Other Than Personal	30,393.67
D	Supplies	6,375.44
E	Equipment	2,060.45
F	Structures	181.09
H	Refunds	424.93
J	Fixed Charges	2,276.19
	Total Expenditures for the year 1932	\$113,994.33

CLASSIFICATION OF DISBURSEMENTS

Ashton Hatchery
Year 1932

A. PERSONAL SERVICES

A1	Salaries of regular officers and employees	\$ 2,570.83
	Total for Personal Services	\$ 2,570.83

B. SERVICES OTHER THAN PERSONAL

B2	Transportation of things	\$ 186.04
B3	Board and lodging	71.07
B4	Repairs to structures and equipment	127.90
B5	Communication services	48.16
B6	Printing	4.65
B8	Furnishing of heat, light, power and electricity	70.20
	Total for Services Other Than Personal	508.02

D. SUPPLIES

D1	Office, educational and scientific supplies	\$ 27.60
D2	Fuels and illuminants	380.10
D3	Mechanics, engineers and electricians supplies	51.97
D4	Household supplies	76.38
D5	Wearing apparel	9.50
D6	Fish food	3,094.34
D8	Explosives	9.10
	Total for Supplies	\$ 3,648.99

E. EQUIPMENT

Total for Equipment	\$ 79.82
---------------------------	----------

F. STRUCTURES

Total for Structures	\$ 99.20
----------------------------	----------

J. FIXED CHARGES

Total for Fixed Charges	\$ 27.00
-------------------------------	----------

RECAPITULATION

A	Personal Services	\$ 2,570.83
B	Services Other Than Personal	508.02
D	Supplies	3,648.99
E	Equipment	79.82
F	Structures	99.20
J	Fixed Charges	27.00
	Total Expenditures for the year 1932	\$ 6,933.86

CLASSIFICATION OF DISBURSEMENTS

American Falls Hatchery
Year 1932

A. PERSONAL SERVICES

A1	Salary of regular officers and employees	\$ 1,387.50
A4	Special services	54.00
	Total for Personal Services	\$ 1,441.50

B. SERVICES OTHER THAN PERSONAL

B1	Transportation of persons	\$ 74.77
B2	Transportation of things	67.21
B3	Board and lodging	8.00
B4	Repairs to equipment and structures	72.85
B5	Communication services	8.20
B6	Printing	6.90
B7	Publication of notices	9.38
B9	Special and miscellaneous services other than personal	16.35
	Total for Services Other Than Personal	\$ 263.66

D. SUPPLIES

D1	Office supplies	\$ 7.48
D2	Fuels and illuminants	178.28
D3	Mechanics, engineers and electricians supplies	71.59
D4	Household supplies	27.35
D5	Wearing apparel	12.84
D6	Fish food	875.56
D8	Explosives	9.45
	Total for Supplies	\$ 1,182.55

F. STRUCTURES

	Total for Structures	\$ 4,911.39
--	-----------------------------------	--------------------

J. FIXED CHARGES

	Total for Fixed Charges	\$ 51.00
--	--------------------------------------	-----------------

RECAPITULATION

A	Personal Services	\$ 1,441.50
B	Services Other Than Personal	263.66
D	Supplies	1,182.55
F	Structures	4,911.39
J	Fixed Charges	51.00
	Total Expenditures for the year 1932	\$ 7,850.10

CLASSIFICATION OF DISBURSEMENTS

Cascade Hatchery
Year 1932

A. PERSONAL SERVICES

A1	Salary of regular officers and employees	\$ 1,387.50
A2	Extra help	12.00
	Total for Personal Services	\$ 1,399.50

B. SERVICES OTHER THAN PERSONAL

B2	Transportation of things	\$ 35.93
B4	Repairs to structures and equipment	38.64
B5	Communication services	54.35
	Total Services Other Than Personal	\$ 128.92

D. SUPPLIES

D1	Scientific supplies	\$ 21.65
D2	Fuels and illuminants	52.60
D3	Mechanics, engineers and electricians supplies	45.42
D4	Household supplies	3.30
D5	Wearing apparel	3.65
D6	Fish food	517.79
	Total for Supplies	\$ 644.41

F. STRUCTURES

	Total for Structures	\$ 34.91
--	----------------------------	----------

J. FIXED CHARGES

	Total for Fixed Charges	\$ 6.00
--	-------------------------------	---------

RECAPITULATION

A	Personal Services	\$ 1,399.50
B	Services Other Than Personal	128.92
D	Supplies	644.41
F	Structures	34.91
J	Fixed Charges	6.00
	Total Expenditures for the year 1932	\$ 2,213.74

CLASSIFICATION OF DISBURSEMENTS

Coeur d'Alene Hatchery
Year 1932

A. PERSONAL SERVICES

A1	Salaries of regular officers and employees	\$ 2,096.37
A2	Extra help	21.00
	Total for Personal Services	\$ 2,117.37

B. SERVICES OTHER THAN PERSONAL

B2	Transportation of things	\$ 99.73
B3	Board and lodging	1.70
B4	Repairs to structures and equipment	265.92
B5	Communication services	88.38
B8	Furnishing heat, light, power and electricity	490.47
B9	Special and miscellaneous services other than personal	51.09
	Total for Services Other Than Personal	\$ 997.29

D. SUPPLIES

D1	Office and scientific supplies	\$ 6.85
D2	Fuels and illuminants	319.56
D3	Mechanics, engineers and electricians supplies	65.10
D4	Household supplies	36.85
D5	Wearing apparel	30.62
D6	Fish food	1,352.89
	Total for Supplies	\$ 1,811.87

RECAPITULATION

A	Personal Services	\$ 2,117.37
B	Services Other Than Personal	997.29
D	Supplies	1,811.87
	Total Expenditures for the year 1932	\$ 4,926.53

CLASSIFICATION OF DISBURSEMENTS

Evergreen Hatchery
Year 1932

A. PERSONAL SERVICES

A	Salaries of regular officers and employees	\$ 1,387.50
A2	Extra help	30.53
	Total for Personal Services	\$ 1,418.03

B. SERVICES OTHER THAN PERSONAL

B1	Transportation of persons	\$ 14.21
B2	Transportation of things	26.27
B4	Repairs to structures and equipment	155.22
B5	Communication services	69.89
B9	Special and miscellaneous services other than personal	5.00
	Total for Services Other Than Personal	\$ 270.59

D. SUPPLIES

D1	Office, educational and scientific supplies	\$ 68.45
D2	Fuels and illuminants	78.26
D3	Mechanics, engineers and electricians supplies	71.77
D4	Household supplies	57.04
D5	Wearing apparel	12.00
D6	Fish food	1,367.64
D8	Explosives	1.75
D9	Agriculturists and florists supplies, etc.	19.46
	Total for Supplies	\$ 1,676.37

F. STRUCTURES

	Total for Structures	\$ 160.16
--	-----------------------------------	------------------

J. FIXED CHARGES

	Total for Fixed Charges	\$ 99.50
--	--------------------------------------	-----------------

RECAPITULATION

A	Personal Services	\$ 1,418.03
B	Services Other Than Personal	270.59
D	Supplies	1,676.37
F	Structures	160.16
J	Fixed Charges	99.50
	Total Expenditures for the year 1932	\$ 3,624.65

CLASSIFICATION OF DISBURSEMENTS

Grangeville Hatchery
Year 1932

A. PERSONAL SERVICES

A1	Salaries of regular officers and employees	\$	618.75
	Total for Personal Services	\$	618.75

B. SERVICES OTHER THAN PERSONAL

B1	Transportation of persons	\$	62.16
B2	Transportation of things		32.34
B4	Repairs to equipment and structures		36.14
B5	Communication services		4.10
B9	Special and miscellaneous services other than personal		2.00
	Total for Services Other Than Personal	\$	136.74

D. SUPPLIES

D1	Office, educational and scientific supplies	\$	2.30
D2	Fuels and illuminants		33.12
D3	Mechanics, engineers and electricians supplies		8.85
D4	Household supplies70
D6	Fish food		111.39
D8	Explosives		5.40
	Total for Supplies	\$	159.76

E. EQUIPMENT

	Total for Equipment	\$	30.00
--	----------------------------------	-----------	--------------

F. STRUCTURES

	Total for Structures (material)	\$	1.12
--	--	-----------	-------------

J. FIXED CHARGES

	Total for Fixed Charges	\$	5.00
--	--------------------------------------	-----------	-------------

RECAPITULATION

A	Personal Services	\$	618.75
B	Services Other Than Personal		136.74
D	Supplies		159.76
E	Equipment		30.00
F	Structures		1.12
J	Fixed Charges		5.00
	Total Expenditures for the year 1932	\$	951.37

CLASSIFICATION OF DISBURSEMENTS

Hay Spur Hatchery
Year 1932

A. PERSONAL SERVICES

A1	Salaries of regular officers and employees	\$ 2,368.50
A2	Extra help	167.00
A4	Special services	15.00
	Total for Personal Services	\$ 2,550.50

B. SERVICES OTHER THAN PERSONAL

B1	Transportation of persons	\$ 1.20
B2	Transportation of things	67.74
B3	Board and lodging	1.50
B4	Repairs to equipment and structures	326.77
B5	Communication services	134.97
B8	Furnishing of heat, light, power and electricity	98.27
B9	Special and miscellaneous services other than personal	90.00
	Total for Services Other Than Personal	\$ 720.45

D. SUPPLIES

D1	Office, educational and scientific supplies	\$ 48.85
D2	Fuels and illuminants	271.86
D3	Mechanics, engineers and electricians supplies	57.32
D4	Household supplies	9.37
D5	Wearing apparel	20.82
D6	Fish food	3,559.01
D8	Explosives	4.60
	Total for Supplies	\$ 3,971.83

E. EQUIPMENT

Total for Equipment	\$ 7.35
----------------------------------	----------------

F. STRUCTURES

Total for Structures (building material and labor)	\$ 37.51
---	-----------------

J. FIXED CHARGES

Total for Fixed Charges	\$ 101.40
--------------------------------------	------------------

RECAPITULATION

A	Personal Services	\$ 2,550.50
B	Services Other Than Personal	720.45
D	Supplies	3,971.83
E	Equipment	7.35
F	Structures	37.51
J	Fixed Charges	101.40
	Total Expenditures for the year 1932	\$ 7,389.04

CLASSIFICATION OF DISBURSEMENTS

Henry's Lake Hatchery
Year 1932

A. PERSONAL SERVICES

A1	Salaries of regular officers and employees	\$	562.50
A2	Extra help		32.26
	Total for Personal Services	\$	594.76

B. SERVICES OTHER THAN PERSONAL

B1	Transportation of persons	\$	21.60
B3	Board and lodging		14.65
B4	Repairs to structures and equipment		38.25
	Total for Services Other Than Personal	\$	74.50

D. SUPPLIES

D2	Fuels and illuminants	\$	65.26
D3	Mechanics, engineers and electricians supplies		26.63
D6	Fish food		37.48
	Total for Supplies	\$	129.37

F. STRUCTURES

	Total for Structures (building material and labor)	\$	15.12
--	--	----	-------

J. FIXED CHARGES

	Total for Fixed Charges	\$	62.00
--	-------------------------------	----	-------

RECAPITULATION

A	Personal Services	\$	594.76
B	Services Other Than Personal		74.50
D	Supplies		129.37
F	Structures		15.12
J	Fixed Charges		62.00
	Total Expenditures for the year 1932	\$	875.75

CLASSIFICATION OF DISBURSEMENTS**Mackay Hatchery
Year 1932****A. PERSONAL SERVICES**

A1	Salaries of regular officers and employees	\$ 1,368.75
	Total for Personal Services	\$ 1,368.75

B. SERVICES OTHER THAN PERSONAL

B2	Transportation of things	\$ 73.58
B4	Repairs to structures and equipment	14.20
B5	Communication services	5.42
	Total for Services Other Than Personal	\$ 93.20

D. SUPPLIES

D1	Scientific supplies	\$ 5.00
D2	Fuels and illuminants	190.85
D3	Mechanics, engineers and electricians supplies	13.50
D4	Household supplies	2.50
D5	Wearing apparel	5.49
D6	Fish food	442.01
	Total for Supplies	\$ 659.35

RECAPITULATION

A	Personal Services	\$ 1,368.75
B	Services Other Than Personal	93.20
D	Supplies	659.35
	Total Expenditures for the year 1932	\$ 2,121.30

CLASSIFICATION OF DISBURSEMENTS**Pocatello Hatchery
Year 1932****A. PERSONAL SERVICES**

A1	Salaries of regular officers and employees	\$ 165.32
	Total for Personal Services	\$ 165.32

D. SUPPLIES

D1	Scientific supplies	\$ 6.65
D2	Fuels and illuminants	4.19
D3	Mechanics, engineers and electricians supplies	10.25
D4	Household supplies	6.40
D6	Fish food	158.51
D8	Explosives	2.50
	Total for Supplies	\$ 188.50

RECAPITULATION

A	Personal Services	\$ 165.32
D	Supplies	188.50
	Total Expenditures for the year 1932	\$ 353.82

CLASSIFICATION OF DISBURSEMENTS

Sandpoint Hatchery and
Ruby Creek Rearing Pond
Year 1932

A. PERSONAL SERVICES

A1	Salaries of regular officers and employees	\$ 1,966.21
A2	Extra help	37.00
	Total for Personal Services	\$ 2,003.21

B. SERVICES OTHER THAN PERSONAL

B2	Transportation of things	\$ 95.78
B4	Repairs to structures and equipment	316.11
B5	Communication services	60.20
B7	Publication of notices	9.75
B9	Special and miscellaneous services other than personal	5.75
	Total for Services Other Than Personal	\$ 487.59

D. SUPPLIES

D1	Office, educational and scientific supplies	\$ 11.00
D2	Fuels and illuminants	373.14
D3	Mechanics, engineers and electricians supplies	58.24
D4	Household supplies	6.30
D6	Fish food	919.04
D9	Agriculturists and florists supplies, etc.	59.17
	Total for Supplies	\$ 1,426.89

E. EQUIPMENT

	Total for Equipment	\$ 227.25
--	----------------------------------	------------------

F. STRUCTURES

	Total for Structures (building material and labor)	\$ 70.83
--	---	-----------------

G. LAND

	Total for Land (payment on land at Ruby Creek)	\$ 28.80
--	---	-----------------

J. FIXED CHARGES

	Total for Fixed Charges	\$ 9.50
--	--------------------------------------	----------------

RECAPITULATION

A	Personal Services	\$ 2,003.21
B	Services Other Than Personal	487.59
D	Supplies	1,426.89
E	Equipment	227.25
F	Structures	70.83
G	Lands	28.80
J	Fixed Charges	9.50
	Total Expenditures for the year 1932	\$ 4,254.07

CLASSIFICATION OF DISBURSEMENTS

Twin Falls Hatchery
Year 1932

A. PERSONAL SERVICES

A1	Salaries of regular officers and employees	\$ 1,530.25
	Total for Personal Services	\$ 1,530.25

B. SERVICES OTHER THAN PERSONAL

B2	Transportation of things	\$ 66.83
B4	Repairs to structures and equipment	78.00
B5	Communication services	65.31
B8	Furnishing heat, light, power, electricity, etc.	57.85
B9	Special and miscellaneous services other than personal	41.30
	Total for Services Other Than Personal	\$ 309.29

D. SUPPLIES

D1	Office, educational and scientific supplies	\$ 18.30
D2	Fuels and illuminants	108.50
D3	Mechanics, engineers and electricians supplies	16.76
D4	Household supplies	5.18
D5	Wearing apparel	5.21
D6	Fish food	2,824.83
D9	Agriculturists and florists supplies	20.00
	Total for Supplies	\$ 2,998.78

E. EQUIPMENT

	Total for Equipment	\$ 79.37
--	---------------------------	----------

F. STRUCTURES

	Total for Structures (building material and labor)	\$ 42.48
--	--	----------

J. FIXED CHARGES

	Total for Fixed Charges	\$ 1.87
--	-------------------------------	---------

RECAPITULATION

A	Personal Services	\$ 1,530.25
B	Services Other Than Personal	309.29
D	Supplies	2,998.78
E	Equipment	79.37
F	Structures	42.48
J	Fixed Charges	1.87
	Total Expenditures for the year 1932	\$ 4,962.04

CLASSIFICATION OF DISBURSEMENTS

Lapwai Game Farm
Year 1932

A. PERSONAL SERVICES

A1	Salaries of regular officers and employees	\$	4,496.51
A2	Extra services		925.71
	Total for Personal Services	\$	5,422.22

B. SERVICES OTHER THAN PERSONAL

B1	Transportation of persons	\$	114.66
B2	Transportation of things		94.42
B3	Board and lodging		24.73
B4	Repairs to structures and equipment		63.43
B5	Communication services		105.11
B6	Printing		30.50
B9	Special and miscellaneous services other than personal		1.00
	Total for Services Other Than Personal	\$	433.85

D. SUPPLIES

D1	Office, educational and scientific supplies	\$	189.79
D2	Fuel and illuminants		822.73
D3	Mechanics, engineers and electricians supplies		234.44
D4	Household supplies		7.22
D6	Forage and other supplies for animals, fish, birds, etc.		1,676.52
D8	Explosives		4.43
D9	Agriculturists and florists supplies, etc.		33.55
	Total for Supplies	\$	2,968.68

E. EQUIPMENT

Total for Equipment	\$	1,090.08
---------------------------	----	----------

F. STRUCTURES

Total for Structures	\$	2,571.95
----------------------------	----	----------

J. FIXED CHARGES

Total for Fixed Charges	\$	95.45
-------------------------------	----	-------

RECAPITULATION

A	Personal Services	\$	5,422.22
B	Services Other Than Personal		433.85
D	Supplies		2,968.68
E	Equipment		1,090.08
F	Structures		2,571.95
J	Fixed Charges		95.45
	Total Expenditures for the year 1932	\$	12,582.23

CLASSIFICATION OF DISBURSEMENTS

Fish Distribution Year 1932

A. PERSONAL SERVICES

A1	Salaries of regular officers and employees	\$ 2,108.33
A2	Extra help	15.00
	Total for Personal Services	\$ 2,123.33

B. SERVICES OTHER THAN PERSONAL

B1	Transportation of persons	\$ 62.70
B2	Transportation of things	69.78
B3	Board and lodging	1,095.08
B4	Repairs to equipment and structures	811.85
B5	Communication services	24.69
B6	Printing	5.30
B9	Special and miscellaneous services other than personal	261.38
	Total for Services Other Than Personal	\$ 2,330.78

D. SUPPLIES

D1	Office, educational and scientific supplies	\$ 11.55
D2	Fuels and illuminants	1,566.25
D3	Mechanics, engineers and electricians supplies	516.01
D7	Provisions	1.50
D8	Explosives24
	Total for Supplies	\$ 2,095.55

E. EQUIPMENT

Total for Equipment		\$ 15.45
---------------------------	--	----------

J. FIXED CHARGES

Total for Fixed Charges		\$ 104.60
-------------------------------	--	-----------

RECAPITULATION

A	Personal Services	\$ 2,123.33
B	Services Other Than Personal	2,330.78
D	Supplies	2,095.55
E	Equipment	15.45
J	Fixed Charges	104.60
	Total Expenditures for the year 1932	\$ 6,669.71

CLASSIFICATION OF DISBURSEMENTS

Spawn-taking
Year 1932

A. PERSONAL SERVICES

A1	Salaries of regular officers and employees	\$	1,603.62
A2	Extra help		1,076.62
	Total for Personal Services	\$	2,680.24

B. SERVICES OTHER THAN PERSONAL

B1	Transportation of persons	\$.84
B2	Transportation of things		21.98
B5	Communication services		25.35
	Total for Services Other Than Personal	\$	48.17

D. SUPPLIES

D2	Fuels and illuminants	\$	11.45
D3	Mechanics, engineers and electricians supplies		42.19
D4	Household supplies		3.75
D6	Fish food		44.65
	Total for Supplies	\$	102.04

E. EQUIPMENT

	Total for Equipment		1.00
--	----------------------------------	--	-------------

F. STRUCTURES

	Total for Structures	\$	23.11
--	-----------------------------------	-----------	--------------

J. FIXED CHARGES

	Total for Fixed Charges	\$	87.20
--	--------------------------------------	-----------	--------------

RECAPITULATION

A	Personal Services	\$	2,680.24
B	Services Other Than Personal		48.17
D	Supplies		102.04
E	Equipment		1.00
F	Structures		23.11
J	Fixed Charges		87.20
	Total Expenditures for the year 1932	\$	2,941.76

CLASSIFICATION OF DISBURSEMENTS**Bearing Ponds
Year 1932****A. PERSONAL SERVICES**

A1	Salaries of regular officers and employees	\$	1,214.16
A2	Extra help		54.50
	Total for Personal Services	\$	1,268.66

B. SERVICES OTHER THAN PERSONAL

B1	Transportation of persons	\$	1.69
B2	Transportation of things		52.79
B3	Board and lodging		5.15
B4	Repairs to equipment and structures		33.14
B5	Communication services22
	Total for Services Other Than Personal	\$	92.99

D. SUPPLIES

D1	Office, educational and scientific supplies	\$	13.03
D2	Fuels and illuminants		26.00
D3	Mechanics, engineers and electricians supplies		62.70
D4	Household supplies		9.48
D5	Wearing apparel		3.80
D6	Fish food		2,060.60
D8	Explosives		3.40
	Total for Supplies	\$	2,179.01

E. EQUIPMENT

	Total for Equipment	\$	7.85
--	----------------------------------	-----------	-------------

F. STRUCTURES

	Total for Structures	\$	623.42
--	-----------------------------------	-----------	---------------

J. FIXED CHARGES

	Total for Fixed Charges		62.00
--	--------------------------------------	--	--------------

RECAPITULATION

A	Personal Services	\$	1,268.66
B	Services Other Than Personal		92.99
D	Supplies		2,179.01
E	Equipment		7.85
F	Structures		623.42
J	Fixed Charges		62.00
	Total Expenditures for the year 1932	\$	4,233.93

CLASSIFICATION OF DISBURSEMENTS

Eagle Rearing Pens
Year 1932

A. PERSONAL SERVICES

A1	Salaries of regular officers and employees	\$	637.50
	Total for Personal Services	\$	637.50

B. SERVICES OTHER THAN PERSONAL

B2	Transportation of things	\$	24.50
B4	Repairs to equipment and structures		2.40
	Total for Services Other Than Personal	\$	26.90

D. SUPPLIES

D3	Scientific supplies	\$	21.75
D2	Fuels and illuminants		55.60
D3	Mechanics, engineers and electricians supplies		46.57
D6	Forage and other supplies for birds		450.73
D9	Agriculturists supplies		4.80
	Total for Supplies	\$	579.45

F. STRUCTURES

	Total for Structures	\$	55.05
--	----------------------------	----	-------

J. FIXED CHARGES

	Total for Fixed Charges	\$	400.00
--	-------------------------------	----	--------

RECAPITULATION

A	Personal Services	\$	637.50
B	Services Other Than Personal		26.90
D	Supplies		579.45
F	Structures		55.05
J	Fixed Charges		400.00
	Total Expenditures for the year 1932	\$	1,698.90

CLASSIFICATION OF DISBURSEMENTS

**Jerome Rearing Pens
Year 1932**

A. PERSONAL SERVICES

A2	Extra help	\$	47.00
	Total for Personal Services	\$	47.00

B. SERVICES OTHER THAN PERSONAL

B1	Transportation of persons	\$	9.10
B2	Transportation of things		4.19
	Total for Services Other Than Personal	\$	13.29

D. SUPPLIES

D3	Mechanics, engineers and electricians supplies	\$	3.00
D4	Household supplies		2.00
D6	Forage and other supplies for birds		100.95
	Total for Supplies	\$	105.95

E. EQUIPMENT

	Total for Equipment	\$	1.75
--	---------------------------	----	------

F. STRUCTURES

	Total for Structures	\$	843.73
--	----------------------------	----	--------

G. LANDS

	Total for Lands	\$	1,500.00
--	-----------------------	----	----------

RECAPITULATION

A	Personal Services	\$	47.00
B	Services Other Than Personal		13.29
D	Supplies		105.95
E	Equipment		1.75
F	Structures		843.73
G	Lands		1,500.00
	Total Expenditures for the year 1932	\$	2,511.72

CLASSIFICATION OF DISBURSEMENTS

Game Warden's Predatory Animal Fund
Year 1932

A. PERSONAL SERVICES

A1	Salaries of regular officers and employees	\$ 6,472.33
A2	Extra help	81.15
	Total for Personal Services	\$ 6,553.48

B. SERVICES OTHER THAN PERSONAL

B1	Transportation of persons	\$ 114.74
B2	Transportation of things	14.22
B3	Board and lodging	214.20
B4	Repairs to equipment and structures35
B5	Communication services	1.15
B9	Special and miscellaneous services other than personal	590.07
	Total for Services Other Than Personal	\$ 934.73

D. SUPPLIES

D1	Scientific supplies	\$ 9.54
D2	Fuels and illuminants	11.90
D3	Mechanics, engineers and electricians supplies	2.27
D8	Explosives	109.26
	Total for Supplies	\$ 132.97

E. EQUIPMENT

	Total for Equipment	\$ 1.75
--	----------------------------------	----------------

J. FIXED CHARGES

	Total for Fixed Charges	\$ 30.60
--	--------------------------------------	-----------------

RECAPITULATION

A	Personal Services	\$ 6,553.48
B	Services Other Than Personal	934.73
D	Supplies	132.97
E	Equipment	1.75
J	Fixed Charges	30.60
	Total Expenditures for the year 1932	\$ 7,653.53

CLASSIFICATION OF DISBURSEMENTS**Game Warden's Suspense Fund
Year 1932****H. REFUNDS**

Total for Refunds	\$ 280.00
-------------------------	-----------

RECAPITULATION

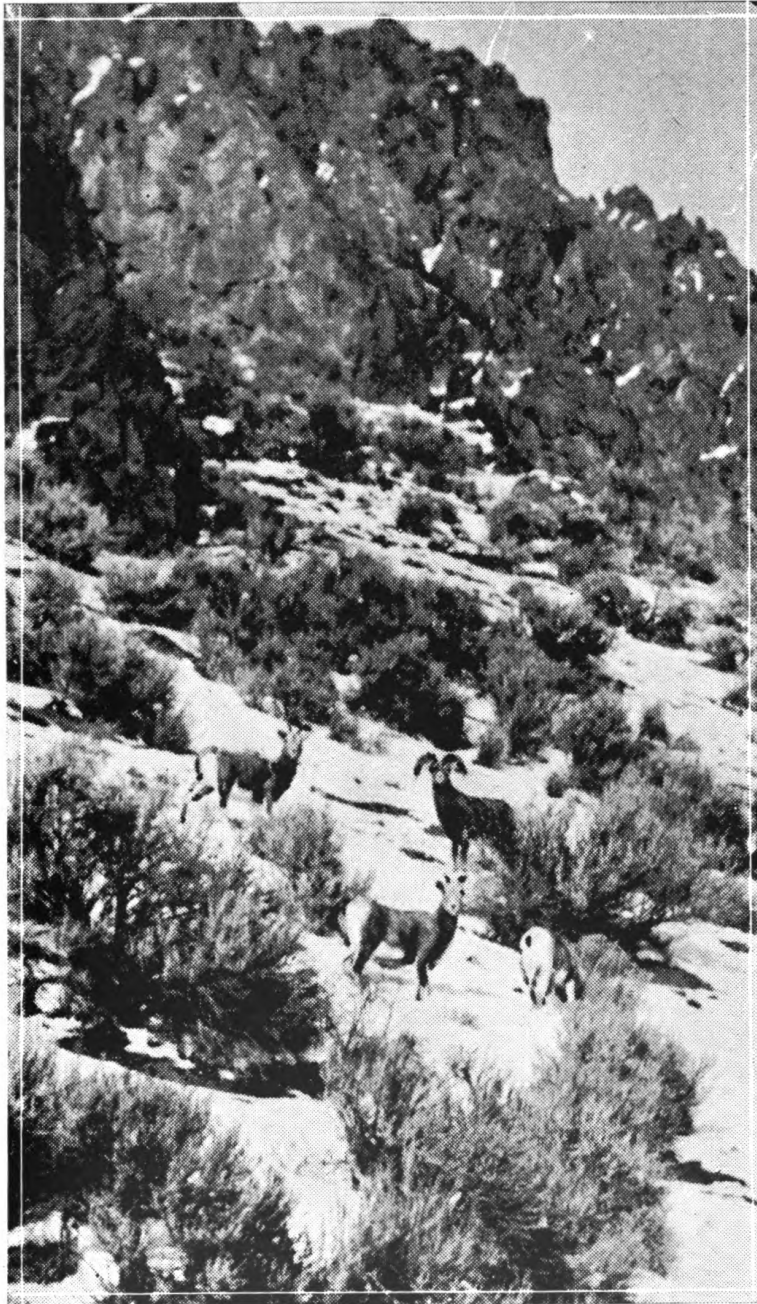
Total for Refunds	\$ 280.00
-------------------------	-----------

Total Expenditures for the year 1932	\$ 280.00
--	-----------

RECAPITULATION

A Personal Services	\$108,793.76
B Services Other Than Personal	38,264.63
D Supplies	33,037.76
E Equipment	3,602.12
F Structures	9,671.07
G Lands	1,528.80
H Refunds	704.93
J Fixed Charges	3,419.31

TOTAL OF ALL EXPENDITURES FOR THE YEAR 1932	\$199,022.38
--	---------------------



Rocky Mountain Sheep on winter range near Challis, Custer County.

UNIVERSITY OF MICHIGAN
3 9015 06526 0724

