

STATE OF WASHINGTON UNIVERSITY OF ILLINOIS LIBRARY
Department of Fish and Game

JUL 12 1913

FIRST AND SECOND ANNUAL
REPORTS

OF THE

CHIEF GAME WARDEN


TO THE

GOVERNOR OF THE STATE OF WASHINGTON

June 12, 1913, to February 28, 1915

L. H. DARWIN
CHIEF GAME WARDEN
Seattle, Washington

1913-1914

OLYMPIA, WASH.
FRANK M. LAMBOEN  PUBLIC PRINTER
1916

SEATTLE, WASHINGTON, March 1, 1915.

To His Excellency, Ernest Lister, Governor of Washington.

SIR: In accordance with the provisions of the law, I am submitting this, my First Biennial Report, covering the period between June 12, 1913, and March 1, 1915, which lacks about two and one-half months of being a full biennial period.

Respectfully submitted,

L. H. DARWIN,

Chief Game Warden.

Generated at Montana State University on 2023-04-03 22:11 GMT / <https://hdl.handle.net/2027/uiug.30112119685037>
Public Domain, Google-digitized / http://www.hathitrust.org/access_use#pd-google

639
R274
10/15-1917/19

REMOTE STORAGE

FIRST BIENNIAL GAME REPORT

The present game code of this State, which became effective June 12, 1913, provides for a biennial report to the Governor, and this first biennial period closed yesterday, February 28, 1915.

In accordance with its provisions, I am submitting this, my first biennial report, which lacks from March 1, 1913, to June 12, 1913, of being a full two year or biennial period.

In order that you might advise the legislature concerning the operation of the present game law, on or about December 1, 1914, I submitted to you a preliminary report showing the workings of the new law since it became effective on June 12, 1913, up to that date.

The present report embraces practically all the subject matter covered in the preliminary report.

FISH COMMISSIONER MADE CHIEF GAME WARDEN.

The legislature now in session has already evidenced its intention of acting in accordance with several of the suggestions made in that preliminary report. The most noteworthy action which it seems certain it will take will be the retention of the Food and Game and Game Fish Departments under a single head, and the maintenance of the State trout hatcheries out of the State game fund rather than out of the general fund. And, in again providing for a single head for both the Food and Game and Game Fish Departments, the legislature places its stamp of approval on your action in refusing to permit them to become separated, which was provided for in the becoming operative of the present game and game fish code, but which you prevented by appointing me State Game Warden, after having previously appointed me State Fish Commissioner.

The game law which was in existence up until the time the new one became effective made the Fish Commissioner Ex-Officio State Game Warden. The present law, however, changed this, and provided for a Chief Game Warden to reside in Western Washington and a Chief Deputy Game Warden to reside in Eastern Washington, each to have jurisdiction in his respective portion of the State. But the duties of the newly created Chief Game Warden and of the State Fish Commissioner overlapped so much that Your Excellency, foreseeing a probable conflict of authority, which would be disadvantageous to the great food fishing industry of the State, as well as to the game and game fish division, forestalled it by taking the action above noted.

IMPORTANT FEATURES OF PROPOSED NEW GAME CODE.

Among other things, the new game code provides for the establishment of county trout hatcheries, but the supervision of their construction and the supervision of the planting of their output are made the duties of the State Fish Commissioner.

942699

cont
19 July 19 - directed

Again, authority regarding the construction of fishways in the State is divided between the game commissions of the respective counties and the State Fish Commissioner.

Practically all the other states where there has been dual control have returned to the system of single control of fish and game. Single control also offers large possibilities of economy by letting the two departments work in conjunction, and the very best use has been made of the chances thus presented. Several of the county game wardens have very materially assisted the Fish Commissioner's portion of the office, while, in turn, the Fish Commissioner's force has been of great service to the game commissions and the game wardens of the several counties of the State, particularly in the matter of the construction of fishways, the planting of fry and the development of game fishing operations.

In the matter of fishway construction, none of the county game commissions are equipped to deal with this problem like the Fish Commissioner's office. By acting on our own initiative, and, in some cases, in conjunction with the county game commissions, we have been able to secure the installation of fishways in many streams in which they should have been placed years ago. The matter of fishway construction is one which should be left entirely with the State authorities, because of their superior equipment for dealing with this question, which, in a large way, calls for uniformity of construction, in accordance with the dictates of experience.

Again, this State has the greatest number of food fish hatcheries of any in the Union, and its food and game fish hatcheries combined number within six of those possessed by the United States Government. It would seem to be the sheerest nonsense not to make use of the food fish hatcheries for the purpose of hatching game fish, when this can be done without any interference whatsoever, and, vice versa, the game fish hatcheries can be used to hatch salmon under similar conditions. Since assuming charge of this department, I have done this whenever possible, and with most satisfactory results to both the food and game fish interests, and with a great saving of expenditure, particularly in the distribution of fry. How well the game fish interests have profited can be told from the fact that the number of trout hatched during the present fiscal year will be almost three times as great as during the last one. As a result of this, and the assurance, from the steps already taken, that each year hereafter a much larger number will be taken than during the present year, it is safe to assume that the streams of this State will in a short time contain as many fish as were to be found in them even before the advent of the white man.

IMPORTANCE OF GAME AND GAME FISH DEPARTMENT.

The feeling which resulted in the creation of the office of State Game Warden separate and apart from the Fish Commissioner, arose

very largely from the fact that no considerable attention had been paid in the past to the demand of the game and game fish interests of the State.

In the fiscal year ending March 31, 1914, there were issued of State and county resident and non-resident hunting and fishing licenses a grand total of 96,350, which by the close of the fiscal year, ending February 28, 1915, had increased to 124,901.

During the average year, there are issued some 3,600 to 3,800 food fishing licenses. The relative number of the two kinds of licenses issued gives some idea of the much larger number of people interested in our game and game fish as compared with those interested in our food fish, although, of course, the difference is not anywhere nearly so great as these figures might seem to indicate.

I am glad, indeed, to be able to advise you that the sportsmen of the State now seem entirely satisfied to have the two departments continue under one head, and at the last session of the Association of Game Commissioners and Game Wardens of Washington, held in Olympia in January, 1915, a resolution was unanimously adopted requesting that both departments again be placed under one head.

A great aid arising out of this present situation has been that the output of the State trout hatcheries has been steadily increasing during the past two years, to the great satisfaction of the game fishers of the State, and, in this connection it may be mentioned that, of those who take out hunting and fishing licenses in this State, four fish to where one hunts.

The game fund of this State is some \$3,300.00 better off by reason of the fact that, as Game Warden of this State, for the past two years, I have not drawn the salary of \$1,800.00 a year which the law provides. At the time of your appointing me, you made it a condition that I was not to do so, because I was already drawing a salary as State Fish Commissioner.

There still remains one officer called into existence by the new game code whose entire time is devoted to game matters. I refer to the Chief Deputy Game Warden.

STRONG SENTIMENT FOR GAME PROTECTION.

The strong sentiment which exists in this State for game protection has greatly increased under the operation of the present game code, which represents the longest step yet taken for the preservation of our game and game fish. The existence of this sentiment is shown by the fact that, for the first year of the biennium, of the 607 arrests, there resulted 499 convictions, while, during the second year of the biennium, of the 970 arrests made, there were 793 convictions had therefrom. In both years, the percentage of convictions obtained was eighty-two. During the first year, the larger number of arrests occurred for killing birds out of season, while, during the second, the larger number of arrests was made for fishing without a license.

Going to make a portion of this report is a tabulated statement of the number of violations of the various sections of the game code, shown by counties.

LEGISLATIVE COMMITTEE ENDORSES PROPOSED GAME CODE CHANGES.

The present game code differs so radically from its predecessor that at first it looked as though it would call forth considerable opposition. Its working out has, on the whole, however, proved fairly satisfactory.

A committee from the Game Commissioners' and Game Wardens' Association of this State is now before the legislature seeking certain changes, one of which is the opening of the fishing season all over the State on April first rather than on May first. This committee came into existence as the result of a meeting of the legislative committees of the Game Commissioners' and Game Wardens' Associations of Eastern and Western Washington, which I called to convene at my office on December 10, 1914, to advise me concerning those recommendations which they thought should be made to the legislature of the needed changes in our game code.

These and other minor changes desired by the several communities will, very likely, be granted by the legislature. Whether or not it is done, under the present law, there is a constituted game authority in each county charged with reporting to the Game Warden of the State that action which in its judgment the legislature should take as regards game affairs in the several counties. Also, they have wide latitude of action which they may take themselves in bettering game conditions in their own counties, and the law provides them with the means whereby this may be accomplished.

NEW CODE FAIRLY SATISFACTORY.

The law is a compromise between those favoring State and those favoring county control. As it was enacted in the closing days of the last legislature, its phraseology and construction are, possibly, not all that should be bestowed on so important a measure. This has resulted in a number of its provisions being fought through to the supreme court, to be upheld, however, in every instance.

This office has been forced to call most generously on the Attorney General's office to construe the act into a workable law. Because of the small legal force at his disposal, the Attorney General's office did not have the time to devote to a compilation of it, to the end that those sportsmen of the State desiring to do so might provide themselves with copies. Acting upon the Attorney General's advice, I employed private counsel to codify all the game laws as they appeared on the statute books the day after becoming effective of the present game code.

LIMITED AUTHORITY TO STATE GAME WARDENS.

In my judgment, a defect in the present law is the uncertain language used in the defining of the duties and authority of the State Game Warden and Chief Deputy Game Warden. Even in those places where authority is sought to be given them, the statute does not provide means for making that authority effective.

EXCELLENT RECORD OF TROUT FRY PLANTING.

For the first time during the history of the State, during the past two years, every county in it has been offered trout fry for planting, and, with the exception of two, Benton and Franklin, trout fry has been furnished by this Department for planting in all the counties of this State. The reason for Benton and Franklin counties declining to receive any was because of the fact that the only waters in them were those of the Columbia and Yakima rivers, and it was felt that to place any fry in these streams would have been as bad as throwing them away, because they would have been immediately devoured by the larger fish.

VALUABLE ASSISTANCE RENDERED BY COUNTY GAME COMMISSIONS.

In the planting of these fry, this office has found the county game commissions of great service. The rule which had obtained in the past had been for the Fish Commissioner to plant the fry in those streams dictated by his judgment. Of necessity, he could not be as well informed as those persons residing in the county and having the interests of the particular county at heart. The policy which was adopted was that of turning the fry over to the game commissions of the several counties, and letting them plant them in those streams which, in their judgment, would afford the greatest fishing opportunities to the public. The only restriction placed upon them was that the fry could only be placed in those waters which were accessible to the general public for fishing.

The fry were assigned to the several counties of the State, somewhat on a basis of population and number of licenses issued, when that was possible, but always with consideration of the fact that there are many counties which are sparsely populated, but which offer splendid opportunities for fishing, and are, therefore, of service to the sportsmen of the more largely populated counties.

The county game commissions should be allowed their necessary expense of travel to attend meetings and in the performance of other necessary duties, but no compensation whatever for time and service. In many of the smaller populated counties of the State, which, however, may contain large areas, the fact that they could not draw their expense of travel prevented their holding regular meetings of the game

commission and of performing properly those duties which the law imposes upon them. In the main, however, the county game commissioners have been unselfish, and have given not only of their time but of their funds. The good work which they have accomplished in the enforcement of the law, and in restocking, particularly with birds, is just now becoming apparent.

STATE GAME FUND SHOULD SUPPORT STATE'S TROUT HATCHERIES.

Up to the present time, the State trout hatcheries have been operated from the general fund of the State, which means that the general tax payer, who cannot use a hook and line in this State until he has first secured a license, is, nevertheless, forced to maintain these trout hatcheries. We have a State game fund, and it is amply sufficient for the maintenance of the State trout hatcheries. It is derived from those who have advantage of the output of these trout hatcheries. I think it is absolutely unfair to ask the general tax payer to longer continue to support the trout hatcheries, but that their maintenance should come from the State game fund.

STATE GAME WARDENS SHOULD EMPLOY SPECIAL DEPUTIES.

The first objection which is urged to the county system is that the more populous counties secure plenty of revenues for game protection, while the smaller ones which may furnish the game taking opportunities, by reason of the sparsity of their population, cannot secure sufficient funds for adequate restocking, game warden or police work. The past two years have demonstrated that this is more or less true. Several of the larger counties of the State have expended much greater sums of money in their respective counties than has been expended during the same time for the upkeep of the offices of the State Game Warden and the Chief Deputy State Game Warden. In the more densely populated counties, where the revenues are large, there is opportunity for extravagance, and the game commissions must constantly be on the alert to see that it is not indulged.

As an example, take those counties in the State in which are to be found the largest cities, and, therefore, the largest populations, notably King, Spokane, Pierce and Snohomish. Many of the residents of these counties do their hunting and fishing in other counties. To the people of these smaller counties, the thought constantly recurs that they would be far better under a system whereby all the hunting and fishing licenses were paid into a State fund, and where the replenishing of game and game fish is made from the State fund, and the game animals and game birds, as well as game fish, liberated where they would thrive the best, irrespective of county boundaries.

Another illustration of the necessity for State aid is shown along the southern boundary of this State, which is one of our sparsely set-

tled portions. On the other side of the Columbia River is the northern boundary of Oregon, the most thickly settled portion of that State. Because our small counties cannot afford to employ a sufficient number of game wardens, there are more or less violations of the law from Oregon dwellers. Other small counties of the State also suffer because of lack of ability to hire the necessary police protection.

This can be obviated in part if the present legislature grants the authority which the State Game Warden and the Chief Deputy Game Warden have requested, which will permit of their hiring special deputy game wardens for sending into those counties most in need of their services. Of course, they will be paid from the State game fund. In this way, the larger counties will help stand the expense of policing the smaller ones.

CONSTRUCTION OF COUNTY TROUT HATCHERIES.

Under the authority given them, several of the county game commissions have constructed county trout hatcheries, while some of them have established county game farms.

King, Stevens and Snohomish counties have each a game farm and a hatchery. The other counties of the State to establish or purchase hatcheries are Whatcom, Skamania, Kittitas, Yakima and Pend Oreille. Chelan county joined with the State in the construction of a combined salmon and trout hatchery. Those counties in addition to King, Stevens and Snohomish to establish game farms are Island, Thurston and Spokane.

I misdoubt the wisdom of permitting any county to construct a trout hatchery. The law provides that the Fish Commissioner must supervise the work of construction. Several of the counties finding themselves with funds on hand, have constructed trout hatcheries against my first advice, although I would not refuse co-operation when it was seen that the game commission in question very much desired it. In many instances, it has been necessary for the State afterwards to furnish the egg supply wherewith these hatcheries are operated, for, almost without exception, they were constructed without any regard as to the availability of a spawn supply. This not being forthcoming, they have turned to the State to furnish it.

I think the counties could have done much better had they devoted their attention to the propagation of game birds and game animals and left the fish propagation in the hands of the State.

GAME BIRD AND GAME ANIMAL PROPAGATION.

In the matter of game bird and game animal propagation, the counties are more on a parity with the State, for, heretofore, neither of them has engaged in it, although I am very much in favor of the establishment of one or more game farms, and thus save to the State thousands

upon thousands of dollars that are expended each year in other states to maintain our game bird supply.

We have a splendid opportunity to propagate our own supply of game birds and many kinds of game animals, and there can seem to be no reason why we should go East or to Oregon, our southerly neighbor, to purchase them.

In the matter of game fish, however, the State has had years of experience in its propagation, and, because of the great food fishing industry, it is much better equipped to look after this than are the counties, who must of necessity suffer from the lack of experienced supervision. It seems to me that the best ends would be served with the propagation of both fish and game entirely in the charge of the State.

There is now pending before the legislature a bill appropriating \$20,000 for the establishment of a game farm, the passage of which I cannot too strongly urge.

STATE GAME FUND.

Into the State game fund and into the various county game funds during the twenty and one-half months of the present fiscal biennium, there was received \$250,071.00. When it be considered that never before the present biennium was there as much as \$130,000.00 received in a full biennium into the food fisheries fund of this State, some idea of the money that is being raised for the propagation and protection of game and game fish is to be had.

Food fishing is the State's third greatest industry, and it annually amounts to millions of dollars. Never before the present biennium has this industry taxed itself for propagation and protection purposes to an extent whereby a sum of money has been raised much above one-half of the amount that is annually raised for the propagation and protection of our game and game fish. Yet, annually, there is turned into the waters of this State more than 100,000,000 food fish fry, while the custom has been to liberate some two or three millions of game fish fry. This comparison again emphasizes the economic possibilities which might result from placing all the game and game fish revenues in one State fund rather than in separate county funds.

ELK SHOULD BE LIBERATED FURTHER FROM CIVILIZATION.

Our laws make it unlawful to kill elk. As a result, they have increased in number very fast in the Olympic Peninsula, which is the only place in the United States where the Roosevelt variety is to be found. So great in number have they become that it has been reported to me by agents of the United States Government as far back as a year and a half ago that they were dying of starvation.

Money should be made available which would permit of the transportation of a portion of the herd further to the south, for, at the

present time, they are all to be found in that portion of the Olympic Peninsula lying north of Montesano.

The Federal Government has transported into this State a number of Wyoming or Montana elk, which, for the most part, have been liberated in the Cascade Mountains, generally in those counties bordering on the shores of Puget Sound. They have thriven to such an extent that considerable complaint has been made of the destruction of crops and orchards by them. These complaints are mostly of those which were liberated in Snohomish and King counties. The trouble seems to be that they were turned loose too near civilization. It would have been far better to have liberated them further up the mountains, for they seem to remain pretty well in the vicinity where first given their freedom.

OPEN SEASONS FOR GAME.

The State of Washington, with its diversity of climate and physical conditions, offers small opportunity for the enactment of equitable laws, if they are made applicable all over the State. The same kinds of fish will spawn in different seasons in different portions of the State. Certain species of game birds may be plentiful in one portion of the State at a certain time, and not to be found in another part not far distant.

While the present laws are the most satisfactory on the whole of any which have ever been enacted, nevertheless, an attempt is at this time being made before the legislature now in session to change the seasons in certain sections of the State, reference to which has heretofore been made.

SENTIMENT FOR SMALLER BAG LIMITS.

There is a general disposition to still further curtail the number of game animals, game birds and game fish which may be taken during the day, week and season. The present legislature has before it a recommendation asking that 75 be the limit of game fish which may be in a person's possession at one time. It also has a recommendation before it that 20 be the limit of ducks, geese or brant.

A step in the proper direction, undoubtedly, will be the change which will prohibit the killing of doe, or female deer, or at least restrict it to where not more than one doe can be killed in a year.

Many sportsmen feel that there should be a closed season on black bear, and that their capture should not be permitted by the use of traps. Washington is one of the few states that does not provide for a trapper's or taxidermist's license, both of which it could do to advantage.

The State should also take steps to secure and set aside as game preserves those islands in the Columbia River that are the breeding places for geese, and those places in Skagit and Snohomish counties that are breeding places for ducks.

RECEIPTS OF STATE GAME FUND.

During the present biennium, there was received in the State game fund \$41,094.75. The appropriations from this fund by the last legislature were only \$12,000.00, leaving a balance of \$29,094.75 on hand on March 1, 1915. The fact that this large amount of money was piling up there caused a great deal of dissatisfaction over the State among sportsmen, who at first thought that this money would revert to the general fund at the close of the biennium. This report, however, was incorrect, as the State game fund is a permanent fund, retaining all moneys in it until disposed of by legislative action. As a result of this large amount of money making its way into this fund, many of the counties are dissatisfied with that provision of the law which gives the entire amount collected for the issuance of State game licenses to the State game fund, and the present legislature is being asked to so change the law that the county issuing a State game license will get twenty per cent., or \$1.00, and this will make it more to a county's advantage to issue a State game license than a county game license.

It is fair to presume that during the ensuing biennium a considerably greater amount will be received into the State game fund than during the one just closed.

Even though the State trout hatcheries shall be operated out of this fund, and even though several special deputy game wardens be employed, there will still remain plenty of moneys in it to permit of the establishment and construction of a large game farm, should the next legislature in its wisdom see fit to do so.

IS THE GAME CODE CONSTITUTIONAL?

Of the numerous attacks which have been launched at the present game laws through the courts, the most serious one questions the constitutionality of the act, by reason of the manner of the appointment of the county game wardens. There is a case now pending which will make its way to the supreme court to determine this question. The opponents of the present law declare that the constitution provides that all county officers must be elected, and that the supreme court has so held and cite what is known as the Horticulture case, where a horticultural commissioner appointed by a board of county commissioners was declared ineligible to the office.

From the standpoint of game protection, the most important case decided by the supreme court during the year is that which permits the game commissions of the several counties to set aside game preserves not to exceed three townships, without the consent of the owners of the land. The case went up from Skagit county. This law has aroused great opposition among the farmers of the State whose lands have been thrown into game preserves without their consent,

and a determined attempt will be made to repeal it during the present session of the legislature.

Another fruitful source of trouble is the attempt of the county commissioners in some of the counties of the State to prevent the game commissioners from expending the game funds as they see fit. The county commissioners, in some instances, cannot bring themselves to understand that the legislature has created an entirely different set of commissioners, charged with the expenditure of a certain fund. The work of the county game commissions and county game wardens in some of the counties has been greatly hampered by the county commissioners refusing to audit their bills, and, according to the Attorney General, the county commissioners must do this simply as a matter of form. A case which will establish the rights of the respective commissioners is now on appeal to the supreme court.

One of the provisions of the game code which was fraught with trouble in large proportions for the food fishing industry of this State was that which prevented the use of nets in any of the fresh waters of this State. The supreme court held that this inhibition prevented the use of any nets whatsoever in any of the fresh waters of this State, no matter whether the nets were put there for the purpose of catching salmon or game fish. The application of the law as the supreme court construed it would have prevented salmon fishing in the Columbia and Snake rivers, and would have resulted in great damage to the food fishing industry of these sections. Fortunately, the final decision in the case has only just come down, and it is within the province of the legislature, now in session, to correct this mistake in the law, and it will, undoubtedly, do it.

RANK OF COUNTIES IN ISSUING LICENSES.

As was to be expected, King county has during both years of the present biennium issued the most county hunting licenses, but Snohomish county has proven a surprise by, during both years, issuing next to the largest number, far surpassing both Spokane and Pierce counties, which greatly outnumber her in population.

GAME BIRDS LIBERATED.

Of the 4,523 game birds which were purchased and liberated in the State during the year, one-half of this number (2,262) were Hungarian partridges. Bob White quail were liberated in the next largest number, the total of these being 876. Chinese pheasants came next the total of these being 682. The other game birds liberated were golden, silver, Mongolian and ringneck pheasants, California and native quail, while there were a few wild turkeys liberated.

CONTENTS OF STATISTICAL REPORT.

No attempt has heretofore been made to keep any game records in this State. Going to make a part of this report is a record in detail of all the moneys which have been received into the State and county game funds; a record of the licenses issued by each county, and the total of each county's disbursements from the game fund; the number of arrests in the several counties for the violations of the various provisions of the game law, together with the totals for the entire State; a record of the salaried and non-salaried deputy game wardens, and of the guns and fishing gear seized and confiscated; a record of the trout hatcheries constructed and game farms established during the year by the counties, and the output of both of them, and a record of where the fry was planted; of the number of game birds purchased and liberated or hatched and liberated; a record of where the fry furnished by the State trout hatcheries was planted; of the game preserves created by the several counties and their acreage; the property accumulated by the various county game commissions; a record of the number of trout eggs furnished by the State to the several county hatcheries, etc.

With this information, much better work can be done in the matter of propagation and protection. The diversified climate is responsible for the fact that certain kinds of game birds will prosper in one community and are not at all adapted to others. The several county game commissions, which have not heretofore had any data to guide them, will hereafter be in a position to profit by the experience of other counties.

Generated at Montana State University on 2023-04-03 22:11 GMT / https://hdl.handle.net/2027/uiug.30112119685037
Public Domain, Google-digitized / http://www.hathiitrust.org/access_use#pd-google

STATISTICS

FOR

1913

June 12, 1913, to February 28, 1914

NUMBER LICENSES ISSUED.

COUNTIES	Resident County Hunting and Fishing Licenses at \$1.00	Non-Resi- dent County Fishing Licenses at \$2.00	Resident State Hunting and Fishing Licenses at \$5.00	Non-Resi- dent State Hunting and Fishing Licenses at \$10.00
WESTERN WASHINGTON DISTRICT--				
Chehalis	3,377	1	50
Clallam	2,122	14	6
Clarke	2,803	75	35	18
Cowlitz	1,753	123	7	8
Island	1,229	2	3
Jefferson	1,377	4	4
King	10,656	18	252
Kitsap	1,771	23
Lewis	3,462	79	1
Mason	2,071	3
Pacific	2,108	19	9
Pierce	5,211	4	238
San Juan	1,107	1
Skagit	5,662	18	60	1
Skamania	711	122	2
Snohomish	7,784	13	61
Thurston	3,200	2	9
Wahkiakum	348	30	1
Whatcom	4,709	36	2
Totals.....	61,311	445	897	32
EASTERN WASHINGTON DISTRICT--				
Adams	519	20
Asotin	308	14	1
Benton	734	1	2
Chelan	2,333	29	14	1
Columbia	820	5	4
Douglas	214	1	3
Ferry	1,166	2
Franklin	241	21
Garfield	168	6	5
Grant	619	5
Kittitas	2,989	2	10
Klickitat	1,115	93	1
Lincoln	1,288	2	36
Okanogan	1,784	2	1
Pend Oreille	1,530
Spokane	6,486	9	62
Stevens	2,904	4	10
Walla Walla	1,322	5	24
Whitman	338	26
Yakima	5,359	1	11
Totals.....	33,232	172	258	3
Grand Totals.....	94,543	617	1,155	35

Generated at Montana State University on 2023-04-03 22:11 GMT / https://hdl.handle.net/2027/uiug.30112119685037
 Public Domain, Google-digitized / http://www.hathitrust.org/access_use#pd-google

STATE GAME FUND.

Composed of all of the resident and non-resident state license fees, and 10 per cent. of the resident and non-resident county license fees, and of the fines collected for violation of the state game laws, June 12, 1913, to February 28, 1914.

(This report is compiled from figures furnished by the auditors of the various counties.)

COUNTIES	Amount Remitted to State Treasurer to February 28, 1914	Amount Due State Treasurer March 1, 1914	Total Amount of State Game Fund
WESTERN WASHINGTON DISTRICT			
Chehalis	\$638 10	\$0 10	\$638 20
Clallam	245 79	2 96	248 75
Clarke	310 30	349 12	659 42
Cowlitz	307 80	5 00	312 80
Island	137 94	137 94
Jefferson	155 40	13 85	169 25
King	3,445 00	1,138 50	4,583 50
Kitsap	361 10	18 38	379 48
Lewis	749 06	13 00	762 06
Mason	219 60	11 50	231 10
Pacific	244 30	16 90	261 20
Pierce	1,886 85	2 00	1,888 85
San Juan	108 40	15 30	123 70
Skagit	917 00	917 00
Skamania	115 50	115 50
Snohomish	1,120 18	72 02	1,192 20
Thurston	230 00	324 56	554 56
Wahkiakum	45 80	45 80
Whateom	682 20	682 20
Totals.....	\$10,275 32	\$3,638 19	\$13,913 51
EASTERN WASHINGTON DISTRICT			
Adams	\$151 60	\$151 60
Asotin	\$33 00	7 60	40 60
Benton	86 60	1 00	87 60
Chelan	418 70	14 90	433 60
Columbia	100 00	100 00
Douglas	36 80	36 80
Ferry	126 60	6 95	133 55
Franklin	128 50	128 50
Garfield	50 90	50 90
Grant	87 00	87 00
Kittitas	318 10	14 20	332 30
Klickitat	147 00	147 00
Lincoln	303 30	12 20	315 50
Okanogan	195 50	6 50	202 00
Pend Oreille	171 95	36 20	208 15
Spokane	980 00	5 00	985 00
Stevens	353 40	353 40
Walla Walla	252 20	11 30	263 50
Whitman	164 80	25	165 05
Yakima	611 20	611 20
Totals.....	\$3,333 95	\$1,539 20	\$4,873 15
Grand Totals.....	\$13,609 27	\$5,177 39	\$18,786 66

Appropriated for salary and expenses of Chief Game Warden and Chief Deputy Game Warden..... \$12,000 00
 Total amount expended for period June 12, 1913, to February 28, 1914 4,746 38
Balance..... \$7,253 62

RECEIPTS OF THE GAME FUND, AND EXPENDITURES FOR SALARIES AND EXPENSES OF THE GAME WARDENS AND DEPUTIES.

(This report is compiled from figures furnished by the game wardens and auditors of the various counties.)

WESTERN WASHINGTON DISTRICT	Amount Received in Game Fund at time new law went into effect (June 12, 1913) by transfer from former Game Fund,		Total Receipts from June 12, 1913, to February 28, 1914.		Received from Resident County Hunting and Fishing Licenses at \$1.00 Each.		Received from Resident State Hunting and Fishing Licenses at \$5.00 Each.		Received from Non-Resident County Fishing Licenses at \$2.00 Each.		Received from Non-Resident State Hunting and Fishing Licenses at \$10.00 Each.		Total Amount of Receipts from Fines for Violation of the Game Laws.		Total Amount Received in Game Fund from Other Sources.		Total Disbursements from June 12, 1913, to February 28, 1914.		Total Salaries Paid Game Wardens.		Total Salaries Paid Deputy Game Wardens.		Total Expenses of Game Wardens and Deputies.		Balance on Hand in Game Fund March 1, 1914.			
	\$	¢	\$	¢	\$	¢	\$	¢	\$	¢	\$	¢	\$	¢	\$	¢	\$	¢	\$	¢	\$	¢	\$	¢	\$	¢		
Ohehalis	84,413	81	83,637	85	2,877	00	850	00	28	00	00	00	87	55	00	00	00	00	1,851	99	896	35	287	84	624	65	1,641	04
Challam	1,150	53	2,242	50	2,122	00	20	00	25	00	00	00	57	60	00	00	00	00	1,825	00	745	00	241	17	617	07	1,541	04
Clarke	1,653	19	3,859	20	2,893	00	175	00	160	00	00	00	51	20	00	00	00	00	1,825	23	675	00	00	00	256	60	3,497	16
Cowlitz	639	22	2,114	00	1,783	00	35	00	246	00	00	00	80	00	00	00	00	00	1,702	05	605	00	00	00	73	65	1,849	42
Island	1,214	10	1,229	40	1,229	00	15	00	4	00	00	00	8	40	00	00	00	00	1,523	87	230	00	600	00	69	05	1,816	63
Jefferson	90	50	1,512	50	1,377	00	260	00	8	00	00	00	107	00	00	00	00	00	800	83	690	00	1,768	75	1,760	15	1,643	09
King	* 265	96	11,534	88	10,656	00	1,260	00	35	00	00	00	795	00	00	00	00	00	9,625	42	1,011	65	1,768	75	1,760	15	3,446	41
Kitsap	751	77	2,014	80	1,771	00	115	00	00	00	00	00	183	80	00	00	00	00	2,279	11	840	33	1,863	07	1,932	75	1,193	07
Klaskanine	1,382	91	4,019	05	3,462	00	325	00	00	00	00	00	162	05	00	00	00	00	1,662	93	640	00	1,860	45	2,489	00	2,489	00
Mason	1,230	34	2,276	00	2,071	00	15	00	00	00	00	00	90	00	00	00	00	00	1,540	03	685	00	625	00	850	53	1,635	71
Pacific	1,686	76	2,207	00	2,108	00	45	00	38	00	00	00	16	00	00	00	00	00	1,599	05	75	00	548	50	863	10	2,395	60
Pierce	121	90	7,348	10	5,211	00	1,290	00	8	00	00	00	761	50	00	00	00	00	1,074	95	700	00	548	50	863	10	2,395	60
Sau Juan	1,218	25	2,207	00	2,107	00	5	00	00	00	00	00	80	00	00	00	00	00	1,895	05	600	00	375	00	548	50	1,010	20
Skagit	1,372	21	6,957	00	5,562	00	300	00	36	00	00	00	379	00	00	00	00	00	2,345	14	875	00	783	45	428	91	5,419	02
Skamania	444	00	9,975	00	7,111	00	00	00	20	00	00	00	20	00	00	00	00	00	507	82	224	00	00	00	62	05	911	68
Snohomish	1,604	13	9,228	20	7,784	00	305	00	20	00	00	00	1,112	00	00	00	00	00	6,933	42	960	00	2,322	50	8,388	42	4,106	41
Thurston	1,175	79	3,718	60	3,200	00	44	00	4	00	00	00	458	60	00	00	00	00	2,328	04	700	00	792	50	1,355	51	2,210	45
Wahkiakum	87	00	413	00	348	00	5	00	60	00	00	00	00	00	00	00	00	00	244	00	185	00	00	00	244	00	246	00
Whatcom	2,279	72	5,012	00	4,709	00	180	00	00	00	00	00	108	00	00	00	00	00	3,684	75	900	00	864	00	1,920	75	3,389	98
Totals	\$22,010	49	\$70,328	85	\$31,311	00	\$4,454	00	\$500	00	\$320	00	\$4,463	10	\$299	68	\$11,895	66	\$46,546	27	\$12,297	83	\$11,895	66	\$10,780	06	\$41,302	02
	* 265	96																										

* Overdraft.

**RECEIPTS OF THE GAME FUND, AND EXPENDITURES FOR SALARIES AND EXPENSES OF THE GAME WARDENS
 AND DEPUTIES—Concluded.**

EASTERN WASHINGTON DISTRICT	Amount Received in Game Fund at time new law went into effect (June 12, 1913) by transfer from former Game Fund.	Total Receipts from June 12, 1913, to February 28, 1914.	Received from Resident County Hunting and Fishing Licenses at \$1.00 Each.	Received from Resident State Hunting and Fishing Licenses at \$5.00 Each.	Received from Non-Resident Licenses at \$2.00 Each.	Received from Non-Resident State Hunting and Fishing Licenses at \$10.00 Each.	Total Amount of Receipts from Fines for Violation of the Game Laws.	Total Amount Received in Game Fund from Other Sources.	Total Disbursements from June 12, 1913, to February 28, 1914.	Total Salaries Paid Game Wardens.	Total Salaries paid Deputy Game Wardens.	Total Expenses of Game Wardens and Deputies.	Balance on Hand in Game Fund March 1, 1914.
Adams	\$21 48	\$33 00	\$79 00	\$100 00	\$8 00	\$11 00	\$11 00	\$3 00	\$21 08	\$50 00	\$10 00	\$20 30	\$22 45
Asotin	839 21	738 00	303 00	5 00	15 00	25 00	10 00	15 00	292 80	162 50	\$10 00	\$20 30	422 41
Benton	1,126 74	738 00	731 00	10 00	2 00	10 00	10 00	10 00	495 60	375 00	30 05	30 05	1,294 61
Celan	2,827 87	\$,616 00	3,883 00	70 00	58 00	\$10 00	145 00	60 00	1,719 75	887 50	125 50	1,296 75	4,353 40
Columbia	372 32	910 00	820 00	20 00	10 00	2 00	60 00	60 00	551 55	200 00	85 00	85 00	730 97
Douglas	623 80	231 00	214 00	15 00	2 00	2 00	60 00	60 00	11 00	11 00	11 00	11 00	836 10
Ferry	1,924 80	1,223 50	1,168 00	105 00	10 00	12 00	69 50	69 50	1,271 03	724 00	6 00	641 63	1,579 27
Franklin	91 25	346 00	241 00	105 00	12 00	20 00	20 00	20 00	336 95	212 00	124 95	1,579 27
Grant	77 75	223 00	163 00	25 00	4 00	130 00	20 00	3 00	282 65	650 00	44 25	126 40	302 75
Kittitas	1,068 31	644 00	619 00	25 00	50 00	186 00	130 00	3 00	1,431 00	650 00	126 40	1,304 81
Klickitat	1,061 55	3,178 00	2,980 00	50 00	4 00	10 00	59 00	59 00	1,100 91	402 56	531 91	21 35	2,897 19
Lincoln	442 86	1,370 00	1,113 00	180 00	4 00	25 00	35 00	25 00	1,100 91	650 00	50	711 31
Okanogan	1,042 39	1,497 00	1,288 00	10 00	10 00	10 00	95 00	2 00	804 87	650 00	50	1,473 90
Okanogan	1,821 62	1,842 00	1,784 00	10 00	10 00	10 00	25 00	2 00	730 11	350 00	30 00	156 11	2,483 51
Pend Oreille	590 25	1,711 00	1,530 00	6,486 00	18 00	183 00	183 00	183 00	1,122 80	410 00	34 50	297 75	1,989 71
Spokane	918 21	7,221 00	6,486 00	\$10 00	18 00	18 00	255 00	1 00	3,024 31	826 00	200 00	234 95	5,114 70
Stevens	3,824 05	3,162 00	2,904 00	50 00	8 00	200 00	200 00	200 00	3,043 89	810 00	334 88	76 00	3,587 09
Walla Walla	336 72	1,565 00	1,822 00	130 00	10 00	113 00	113 00	113 00	1,022 37	350 00	70 00	1,015 00
Whitman	1,019 15	180 50	338 00	130 00	12 50	12 50	12 50	484 65	300 00	19 85	1,015 00
Yakima	* 107 07	5,641 00	5,359 00	56 00	2 00	255 00	255 00	255 00	3,128 98	1,175 00	165 25	483 10	2,404 95
Totals.....	\$19,006 43 * 107 07	\$36,638 00	\$33,232 00	\$1,290 00	\$344 00	\$300 00	\$1,579 00	\$24 00	\$21,348 95	\$8,474 56	\$1,482 29	\$3,446 50	\$2,866 58
Grand Totals...	\$41,243 80	\$106,966 58	\$94,543 00	\$5,774 00	\$1,234 00	\$320 00	\$6,042 10	\$23 68	\$37,655 21	\$20,772 39	\$13,347 95	\$14,235 05	\$74,108 00

* Overdraft.

ARRESTS IN THE COUNTIES OF WESTERN WASHINGTON FOR THE VARIOUS FORMS OF STATE GAME LAW VIOLATIONS.

	WESTERN WASHINGTON DISTRICT.																												Total convictions obtained.									
	Killing birds out of season.	Killing deer out of season.	Hunting without license.	Fishing without license.	Catching fish under 6 inches.	Fishing out of season.	Fishing with set line.	Fishing with a net.	Fishing within 400 feet of fish ladder.	Dynamiting fish.	Selling game fish.	Killing deer in water.	Selling venison.	Killing water fowl after sunset.	Selling game birds.	Aliens carrying firearms.	Obstructing warden.	Falling to equip dams with fish ladders.	Hunting in game preserve.	Running elk or deer with dogs.	Killing goat out of season.	Killing song birds.	Violating snark boat law.	Casting sawdust and lumber waste in waters of State.	Having birds other than game birds in possession.	Having beaver in possession.	Shooting within one mile of Lake Washington.	Having more than 50 game fish in one day.		Shooting from power boat.	Shooting sea gulls.	Taking game birds out of San Juan county.	Miscellaneous offenses.	TOTAL ARRESTS.				
Chehalis	11	2	1	2	1	4	1	3	1	1	3	1	4	1	5	1	1	3	1	1	3	7	1	3	1	2	1	1	1	1	7	11	39					
Columbia	4	1	1	1	1	1	1	1	1	1	1	1	1	1	1	1	1	1	1	1	1	1	1	1	1	1	1	1	1	1	1	1	1	1	11			
Clarke	4	1	1	1	1	1	1	1	1	1	1	1	1	1	1	1	1	1	1	1	1	1	1	1	1	1	1	1	1	1	1	1	1	1	11			
Cowlitz	4	1	1	1	1	1	1	1	1	1	1	1	1	1	1	1	1	1	1	1	1	1	1	1	1	1	1	1	1	1	1	1	1	1	11			
Island	4	1	1	1	1	1	1	1	1	1	1	1	1	1	1	1	1	1	1	1	1	1	1	1	1	1	1	1	1	1	1	1	1	1	11			
Jefferson	4	1	1	1	1	1	1	1	1	1	1	1	1	1	1	1	1	1	1	1	1	1	1	1	1	1	1	1	1	1	1	1	1	1	11			
King	4	1	1	1	1	1	1	1	1	1	1	1	1	1	1	1	1	1	1	1	1	1	1	1	1	1	1	1	1	1	1	1	1	1	11			
Kitsap	1	1	1	1	1	1	1	1	1	1	1	1	1	1	1	1	1	1	1	1	1	1	1	1	1	1	1	1	1	1	1	1	1	1	1	1	1	
Lewis	7	1	1	1	1	1	1	1	1	1	1	1	1	1	1	1	1	1	1	1	1	1	1	1	1	1	1	1	1	1	1	1	1	1	1	1	1	
Mason	1	1	1	1	1	1	1	1	1	1	1	1	1	1	1	1	1	1	1	1	1	1	1	1	1	1	1	1	1	1	1	1	1	1	1	1	1	
Pacific	13	2	1	2	1	1	1	1	1	1	1	1	1	1	1	1	1	1	1	1	1	1	1	1	1	1	1	1	1	1	1	1	1	1	1	1	1	1
Pierce	13	1	1	1	1	1	1	1	1	1	1	1	1	1	1	1	1	1	1	1	1	1	1	1	1	1	1	1	1	1	1	1	1	1	1	1	1	1
San Juan	4	1	1	1	1	1	1	1	1	1	1	1	1	1	1	1	1	1	1	1	1	1	1	1	1	1	1	1	1	1	1	1	1	1	1	1	1	1
SKagit	4	1	1	1	1	1	1	1	1	1	1	1	1	1	1	1	1	1	1	1	1	1	1	1	1	1	1	1	1	1	1	1	1	1	1	1	1	1
Skamania	13	3	1	1	1	1	1	1	1	1	1	1	1	1	1	1	1	1	1	1	1	1	1	1	1	1	1	1	1	1	1	1	1	1	1	1	1	1
Snohomish	3	1	1	1	1	1	1	1	1	1	1	1	1	1	1	1	1	1	1	1	1	1	1	1	1	1	1	1	1	1	1	1	1	1	1	1	1	1
Thurston	3	1	1	1	1	1	1	1	1	1	1	1	1	1	1	1	1	1	1	1	1	1	1	1	1	1	1	1	1	1	1	1	1	1	1	1	1	1
Wahkiakum	14	1	1	1	1	1	1	1	1	1	1	1	1	1	1	1	1	1	1	1	1	1	1	1	1	1	1	1	1	1	1	1	1	1	1	1	1	1
Whatcom	14	1	1	1	1	1	1	1	1	1	1	1	1	1	1	1	1	1	1	1	1	1	1	1	1	1	1	1	1	1	1	1	1	1	1	1	1	1
Totals.....	78	10	45	92	59	11	11	13	3	3	5	1	2	11	4	13	1	4	6	12	1	2	2	18	2	1	18	1	16	3	1	8	447	302				

ARRESTS IN THE COUNTIES OF EASTERN WASHINGTON FOR THE VARIOUS FORMS OF STATE GAME LAW VIOLATIONS.

EASTERN WASHINGTON DISTRICT	Killing birds out of season.	Killing deer out of season.	Looting without license.	Fishing without license.	Catching fish under 6 inches.	Fishing out of season.	Fishing with set line.	Fishing with net.	Fishing within 100 feet of fish ladder.	Dynamiting fish.	Selling game fish.	Killing deer over hunt.	Killing deer in water.	Selling venison.	Killing water fowl after sunset.	Selling game birds.	Ammos carrying.	Obstructing warden.	Killing geese on Snake River.	Killing geese on Columbia River.	Trapping geese.	TOTAL ARRESTS.	Total convictions obtained.
Adams	4	7	7
Asotin	3	3
Benton	3	3
Chelan	1	1
Columbia	6	6
Douglas	3	3
Ferry	1	1
Franklin	3	3
Garfield	1	1
Grant	5	5
Kititas	7	7
Klickitat	2	2
Lincoln	12	12
Okanogan	14	14
Pend Oreille	11	11
Spokane	3	3
Stevens	5	5
Walla Walla	16	16
Whitman	31	31
Yakima	10	10
Totals.....	53	10	34	13	6	3	2	1	2	1	2	1	2	1	3	2	3	2	2	2	4	160	137

**TOTAL ARRESTS FOR THE VARIOUS FORMS OF GAME LAW
VIOLATIONS IN THE STATE OF WASHINGTON FROM JUNE
12, 1913, TO FEBRUARY 28, 1914.**

Killing birds out of season.....	133
Killing deer out of season.....	20
Hunting without license.....	55
Fishing without license.....	126
Catching fish under 6 inches.....	72
Fishing out of season.....	17
Fishing with set line.....	14
Fishing with a net.....	15
Fishing within 400 feet of fish ladder.....	4
Dynamiting fish.....	5
Selling game fish.....	6
Killing deer in water.....	3
Killing deer over limit.....	2
Selling venison.....	3
Killing water fowl after sunset.....	14
Selling game birds.....	6
Aliens carrying firearms.....	16
Obstructing warden.....	3
Killing geese on Columbia River.....	2
Killing geese on Snake River.....	2
Trapping geese.....	4
Failing to equip dams with fish ladders.....	4
Hunting in game preserve.....	6
Running elk or deer with dogs.....	12
Killing goat out of season.....	1
Killing song birds.....	2
Violating sneak boat law.....	2
Casting sawdust and lumber waste in the waters of the State.....	13
Having birds other than game birds in possession.....	2
Having beaver in possession.....	1
Shooting within one mile of Lake Washington.....	13
Having more than 50 game fish in one day.....	1
Shooting from power boat.....	16
Shooting sea gulls.....	3
Taking game birds out of San Juan county.....	1
Miscellaneous offenses.....	8
Total Arrests.....	607
Total convictions obtained.....	499
(Percentage of convictions obtained, .82)	

Generated at Montana State University on 2023-04-03 22:11 GMT / https://hdl.handle.net/2027/uiug.301121196685037
Public Domain, Google-digitized / http://www.hathitrust.org/access_use#pd-google

SALARIED AND NON-SALARIED DEPUTY GAME WARDENS, AND GUNS AND FISHING GEAR SEIZED AND CONFISCATED.

COUNTIES	Number Salaried Deputies Appointed	Number Non-Salaried Deputies Appointed	Guns and Fishing Gear Seized and Confiscated
WESTERN WASHINGTON DISTRICT—			
Chehalis	7	6	6 Guns 1 Net 8 fathoms long.
Clallam	1	6
Clarke	20
Cowlitz	7
Island	3
King	3	65	125 Lines and Rods.
Kitsap	1	18
Lewis	6	2 Guns 1 Pole
Mason	2
Pacific	11
Pierce	2	25
San Juan	3
Skagit	1	4
Skamania	17
Snohomish	4	50	19 Guns
Thurston	3	20	5 Guns
Wahklakum	2
Whatcom	2
Totals.....	38	251	32 Guns 127 Fishing Gear
EASTERN WASHINGTON DISTRICT—			
Adams	25
Asotin	1	4
Benton	8
Chelan	9	34
Douglas	4
Ferry	1	19
Franklin	5
Grant	1
Kittitas	3
Klickitat	5
Lincoln	12
Okanogan	1	34
Pend Oreille	1	10
Spokane	2	30
Stevens	2	9	1 Trap Net
Walla Walla	19	4 Guns 2 Throw Lines
Yakima	1	24
Totals.....	24	231	4 Guns 3 Fishing Gear
Grand Totals.....	62	482	36 Guns 130 Fishing Gear

Generated at Montana State University on 2023-04-03 22:11 GMT / https://hdl.handle.net/2027/uiug.30112119685037
 Public Domain, Google-digitized / http://www.hathitrust.org/access_use#pd-google

TROUT HATCHERIES CONSTRUCTED OR ACQUIRED.

COUNTIES	Trout Hatcheries Constructed During the Year			Trout Hatcheries Acquired During the Year	
	Number	Cost	Capacity	Number	Capacity
WESTERN WASHINGTON DISTRICT—					
King				2	500,000
Whatcom				1	1,500,000
Totals.....				3	2,300,000
EASTERN WASHINGTON DISTRICT—					
Stevens	1	\$1,200 00	500,000		
Yakima	1	901 67	1,000,000		
Totals.....	2	\$2,101 67	1,500,000		
Grand Totals.....	2	\$2,101 67	1,500,000	3	2,300,000

GAME PRESERVES CREATED, AND CONVEYANCES OWNED BY THE COUNTY GAME COMMISSIONS.

COUNTIES	Number Acres Set Aside for Game Preserves	Game Farms Owned by County Game Commission	Owned by County Game Commission		
			Launches	Auto-mobles	Motor-cycles
WESTERN WASHINGTON DISTRICT—					
Chehalis	11,520		1	1	1
Clarke	69,120				
Island			1		
King	124	10 Acres		1	
Pierce	4,000				
San Juan	480				
Skagit	8,980				
Snohomish			1	1	1
Thurston	64,000				1
Whatcom			1		
Totals.....	158,224	10 Acres	4	3	3
EASTERN WASHINGTON DISTRICT—					
Chelan	46,080				
Kittitas	8,960				1
Spokane	78,120				
Yakima	5,000				
Totals.....	138,160				1
Grand Totals.....	291,384	10 Acres	4	3	4

GAME BIRDS AND GAME ANIMALS PURCHASED BY THE GAME COMMISSIONS AND LIBERATED DURING THE YEAR.

COUNTIES	GAME BIRDS		GAME ANIMALS	
	No.	Variety	No.	Variety
WESTERN WASHINGTON DISTRICT—				
Chehalis	{ 108	Bob White Quail		
	{ 24	Hungarian Partridges		
Clallam	42	Chinese Pheasants		
King	{ 200	Chinese Pheasants		
	{ 6	Hungarian Partridges		
Pierce	{ 100	Hungarian Partridges		
	{ 334	Chinese Pheasants		
Thurston	128	Chinese Pheasants		
Wahatcom	10	Chinese Pheasants		
Total.....	952			
EASTERN WASHINGTON DISTRICT—				
Chelan	{ 300	Hungarian Partridges		
	{ 20	Chinese Pheasants		
Columbia	100	Hungarian Partridges		
Grant	250	Hungarian Partridges		
Spokane	852	Hungarian Partridges		
Stevens	2	Chinese Pheasants	27	Elk
Walla Walla	100	Hungarian Partridges		
Yakima	{ 72	Bob White Quail		
	{ 6	Wild Turkeys		
Totals.....	1,712		27	
Grand Totals.....	2,664		27	

TOTAL FRY PLANTED FROM THE STATE TROUT HATCHERIES DURING THE FISCAL YEAR ENDING FEBRUARY 28, 1914.

	Cut-throat	Rainbow	Total
Lake Chelan Trout Hatchery.....	229,534	51,913	281,447
Dumpka Lake Eycing Station.....		31,935	31,935
Lewis River Trout Hatchery.....		52,000	52,000
Little Spokane Trout Hatchery.....		329,295	329,295
Walla Walla Trout Hatchery.....	35,162	91,868	127,020
Totals.....	264,696	557,001	821,697

Generated at Montana State University on 2023-04-03 22:11 GMT / https://hdl.handle.net/2027/uiug.30112119685037
 Public Domain, Google-digitized / http://www.hathitrust.org/access_use#pd-google

**WHERE THE FRY FURNISHED BY THE STATE HATCHERIES
WERE PLANTED.**

	Out-throat	Rainbow	Steelhead	Total
WESTERN WASHINGTON DISTRICT				
CLARKE COUNTY—				
Brazeo Creek		5,000		5,000
OOWLITZ COUNTY—				
German Creek		12,000		12,000
SAN JUAN COUNTY—				
Cascade Lake			10,000	10,000
SKAMANIA COUNTY—				
Hazel Lake		35,000		35,000
Totals.....		52,000	10,000	62,000
EASTERN WASHINGTON DISTRICT				
OHELAN COUNTY—				
Lake Ohelan and Tributaries.....	229,534	51,913		
Dumpka Lake and Tributaries.....		31,935		
Icicle River		20,000		838,383
FERRY COUNTY—				
Fish Lake		50,000		
Twin Lakes		30,000		80,000
KITTITAS COUNTY—				
Coleman Creek		10,000		
Olson Creek		10,000		
Tanum Creek		10,000		30,000
LINCOLN COUNTY—				
Crab Creek		10,000		
Spokane River		20,000		30,000
OKANOGAN COUNTY—				
Okanogan River		20,000		
Mary Ann Lake.....		15,000		35,000
PEND OREILLE COUNTY—				
Lime Lake		10,000		
Moon Lake		25,000		
Niles Lake		10,000		45,000
SPOKANE COUNTY—				
Little Spokane River.....		10,000		
Spokane River		24,400		
Marshall Creek		24,895		59,295
STEVENS COUNTY—				
Keough Lake		5,000		
Waits Lake		25,000		30,000
WALLA WALLA COUNTY—				
Mill Creek	35,162			
Dry Creek		91,853		127,015
Totals.....	264,696	505,001		769,697
Grand Totals.....	264,696	557,001	10,000	831,697
Salmon fry planted in fresh water.....				10,000
Total trout fry.....				821,697

TROUT FRY, OTHER THAN THAT FURNISHED BY THE STATE HATCHERIES, PLANTED DURING THE YEAR.

COUNTIES	Cut-throat	Eastern Brook	Mackinaw	Rainbow	Silver	Total
WESTERN WASHINGTON DISTRICT—						
Clallam		50,000		30,000		80,000
Island	75,000					75,000
King	250,000			250,000		500,000
Pierce	90,000		1,600			91,500
Snohomish				20,000		20,000
Whatcom	875,000				182,000	1,057,000
Totals.....	1,290,000	50,000	1,600	300,000	182,000	1,823,500
EASTERN WASHINGTON DISTRICT—						
Adams		20,000			20,000	40,000
Asotin		25,000				25,000
Chelan		1,100,000				1,100,000
Douglas		65,000				65,000
Grant		50,000				50,000
Kittitas				15,000		15,000
Lincoln		50,000		10,000	50,000	110,000
Pend Oreille		40,000				40,000
Spokane		50,000		70,000	200,000	320,000
Stevens		60,000				60,000
Whitman		50,000			70,000	120,000
Yakima	200,000	500,000			50,000	750,000
Totals.....	200,000	2,010,000		95,000	300,000	2,605,000
Grand Totals.	1,490,000	2,060,000	1,500	395,000	572,000	4,518,500

FRY OF GAME FISH, OTHER THAN TROUT, PLANTED DURING THE YEAR.

COUNTIES	Bass	Catfish	Land-locked Salmon	Total
WESTERN WASHINGTON DISTRICT—				
King	50,000			50,000
Kitsap	60,000			60,000
Whatcom		2,880		2,880
Totals.....	110,000	2,880		112,880
EASTERN WASHINGTON DISTRICT—				
Pend Oreille	200		30,000	30,200
Grand Totals.....	110,200	2,880	30,000	143,080

**TOTAL FISH FRY PLANTED, AND GAME BIRDS AND ANIMALS
LIBERATED IN THE STATE OF WASHINGTON, DURING THE
YEAR.**

TROUT FRY PLANTED:

Cut-throat	1,754,696	
Eastern Brook	2,060,000	
Mackinaw	1,500	
Rainbow	952,001	
Silver	572,000	5,340,197

FRY OF OTHER GAME FISH PLANTED:

Bass	110,200	
Catfish	2,880	
Land-locked Salmon	30,000	
Steelhead	10,000	153,080

Total..... 5,493 277

GAME BIRDS LIBERATED:

Chinese Pheasants	746	
Hungarian Partridges	1,732	
Bob White Quail.....	180	
Wild Turkeys	6	

Total..... 2,664

GAME ANIMALS LIBERATED:

Elk		27
-----------	--	----

STATISTICS

FOR

1914

March 1, 1914, to February 28, 1915

NUMBER LICENSES ISSUED.

COUNTIES	Resident County Hunting and Fishing Licenses at \$1.00	Non-Resi- dent County Fishing Licenses at \$2.00	Resident State Hunting and Fishing Licenses at \$5.00	Non-Resi- dent State Hunting and Fishing Licenses at \$10.00
WESTERN WASHINGTON DISTRICT—				
Chehalis	4,413	2	32
Clallam	2,573	18	3	1
Clarke	3,470	103	15	13
Cowlitz	1,786	167	7	2
Island	1,332	1
Jefferson	1,582	2	8
King	15,764	11	733	1
Kitsap	2,225	39
Lewis	4,217	5	92
Mason	2,527	3	5
Pacific	2,377	26	4
Pierce	7,367	329	1
San Juan	1,088	6
Skagit	6,551	42
Skamania	985	191	1
Snohomish	9,701	8	54
Thurston	4,023	47
Wahkiakum	403	61	4
Whatcom	5,448	32	1
Totals.....	77,792	597	1,454	19
EASTERN WASHINGTON DISTRICT—				
Adams	756	1	27
Asotin	559	26	2
Benton	1,070	2
Chelan	3,812	21	26	1
Columbia	1,448	2	1
Douglas	258	1	6
Ferry	1,585	1	5
Franklin	199	22
Garfield	325	8	4
Grant	789	7
Kittitas	3,605	1	7
Klickitat	1,521	176	2	4
Lincoln	2,021	60
Okanogan	2,523	1
Pend Oreille	1,931	4
Spokane	8,193	9	73
Stevens	4,484	25	3
Walla Walla	2,126	4	24
Whitman	473	14	1
Yakima	6,769	1	11
Totals.....	44,457	280	296	6
Grand Totals.....	122,249	877	1,750	25

STATE GAME FUND.

COUNTIES	Received from Resident State Hunting and Fishing Licenses	Received from Non-Resident State Hunting and Fishing Licenses	10% of Resident County Hunting and Fishing Licenses	10% of Non-Resident County Hunting and Fishing Licenses	10% of All Fines Collected for Violation of State Game Laws	Received from Other Sources, Transfers, etc.	Total Receipts for Year	Amount Due State Treasurer March 1, 1914	Grand Totals	Amount Remitted from Mar. 1, 1914, to Feb. 28, 1915	Amount Due State Treasurer March 1, 1915
WESTERN WASHINGTON DISTRICT—											
Chehalis	\$160 00	\$41 30	\$0 40	\$4 60	\$56 30	\$0 10	\$56 40	\$49 50	\$6 90
Clallam	15 00	27 30	3 60	19 00	30 90	2 06	307 83	306 46	1 40
Clarke	75 00	347 00	30 60	11 70	584 30	349 12	933 42	917 32	16 10
Cowlitz	35 00	178 60	33 40	2 85	279 85	5 00	274 85	16 20	258 65
Island	5 00	133 20	1 00	139 20	137 94	277 14	137 94	139 20
Jefferson	40 00	138 20	40	2 00	200 60	13 85	214 45	137 05	77 40
King	3,685 00	1,376 40	2 20	104 44	5,418 04	1,118 90	6,536 94	6,481 54	55 40
Kitsap	135 00	222 50	14 50	432 00	18 33	450 33	431 84	19 04
Lewis	460 00	421 70	1 00	40 50	\$1 00	927 20	11 70	938 90	926 80	2 10
Mason	25 00	232 70	60	22 67	315 97	315 47	314 77	70
Pacific	20 00	237 70	5 20	2 50	10 90	282 30	282 30	282 30	10
Pierce	1,645 00	736 70	98 50	2,430 20	2,400 20	2,400 20
San Juan	30 00	108 80	2 00	140 80	15 30	156 10	143 90	12 20
Skagit	210 00	655 10	63 71	931 81	917 00	1,848 81	879 10	969 71
Skamania	5 00	93 50	33 20	136 70	136 70	136 70
Snohomish	270 00	970 10	1 00	61 35	1,303 05	8 40	1,306 45	1,075 63	230 82
Thurston	235 00	402 80	40 88	678 68	334 56	1,013 24	992 08	21 16
Wahkiakum	20 00	40 80	12 20	1 50	74 50	45 80	120 30	45 80	74 50
Whatcom	160 00	544 80	16 00	739 80	671 90	1,402 70	1,403 20
Totals	\$7,270 00	\$190 00	\$7,779 20	\$119 40	\$922 70	\$35 90	\$16,017 20	\$3,645 91	\$19,662 61	\$17,777 73	\$1,884 88

* Overpaid, \$0.50.

STATE GAME FUND—Concluded.

COUNTIES	Received from Resident State Hunting and Fishing Licenses	Received from Non-Resident State Hunting and Fishing Licenses	10% of Resident County Hunting and Fishing Licenses	10% of Non-Resident County and Fishing Licenses	10% of All Fines Collected for Violation of State Game Laws	Received from Other Sources, Transfers, etc.	Total Receipts for Year	Amount Due State Treasurer March 1, 1914	Grand Totals	Amount Remitted State Treasurer from Mar. 1, 1914, to Feb. 28, 1915	Amount Due State Treasurer March 1, 1915
EASTERN WASHINGTON DISTRICT—											
Adams	\$135 00	\$75 60	\$0 20	\$210 80	\$151 60	\$932 40	\$774 40
Asotin	10 00	53 90	5 20	\$1 85	72 95	7 60	80 55	24 00	\$55 65
Benton	10 00	107 00	117 00	1 00	118 00	117 80
Chelan	130 00	\$10 00	381 20	4 20	21 25	546 65	40	547 05	545 85	1 20
Columbia	5 00	144 80	4 00	10 20	160 40	33 50	233 90	223 40	30 50
Douglas	25 00	25 80	20	51 00	51 00	57 00
Ferry	25 00	158 50	20	12 25	195 95	6 35	202 30	182 70	19 60
Franklin	110 00	19 90	129 90	129 90	129 00
Garfield	20 00	32 50	1 60	54 10	50 00	105 00	83 00	17 00
Grant	35 00	78 90	50	114 40	14 30	114 00	114 10
Kittitas	35 00	300 50	20	67 65	463 95	14 30	477 65	475 65	2 00
Klickitat	10 00	40 00	152 10	35 20	3 85	241 15	147 00	388 15	147 00	241 15
Lincoln	300 00	202 10	1 10	503 20	12 20	515 40	12 20	503 20
Okanogan	5 00	232 80	6 60	264 30	264 30	67 80	196 50
Pend Oreille	193 10	80	63	194 53	30 20	230 73	230 73
Spokane	305 00	819 30	1 80	29 80	\$9 50	1,216 40	5 00	1,221 40	1,213 80	7 60
Stevens	15 00	448 40	5 00	47 34	515 74	340 80	856 54	859 13	367 41
Walla Walla	120 00	212 60	80	4 90	9 50	347 80	12 20	360 00	360 00
Whitman	70 00	10 00	47 80	3 87	131 67	25	131 92	121 35	10 57
Yakima	65 00	676 90	20	27 50	759 90	759 90	611 20	148 40
Totals.....	\$1,480 00	\$40 00	\$4,445 70	\$56 00	\$239 19	\$10 00	\$6,200 89	\$879 50	\$7,170 39	\$5,596 31	\$1,692 08
Grand Totals.....	\$8,750 00	\$250 00	\$12,224 70	\$175 40	\$861 89	\$45 90	\$22,308 09	\$4,624 29	\$26,833 00	\$23,374 04	\$3,458 96

Appropriation for salary and expenses of Chief Game Warden and Chief Deputy Game Warden, biennium ending February 28, 1915, \$12,000 00
 Total amount expended for period June 12, 1913, to February 28, 1914, \$4,746 28
 Total amount expended for period March 1, 1914, to February 28, 1915, 6,914 79 11,661 37
 Unexpended balance March 1, 1915, \$398 83
 † Overpaid, \$2.00.

COUNTY GAME FUNDS.
RECEIPTS.

COUNTIES	90% of Resident County Hunting and Fishing Licenses	90% of Non-Resident County Fishing Licenses	90% of All Fines Collected for Violation of the State Game Laws	Receipts from Other Sources	Total Receipts for Year	Amount on Hand March 1, 1914	Grand Totals
WESTERN WASHINGTON DISTRICT—							
Chehalis	\$3,971 70	\$3 60	\$491 88	\$4,466 68	\$3,029 43	\$7,496 11
Clallam	2,315 70	32 40	171 00	2,519 10	1,541 04	4,060 14
Clarke	3,123 00	185 40	305 30	86 30	3,699 00	3,497 16	6,917 16
Cowlitz	1,607 40	300 00	25 65	1,933 05	1,846 42	3,780 47
Island	1,198 80	9 00	22 88	1,229 18	616 62	1,846 81
Jefferson	1,423 80	3 60	18 00	1,445 40	721 07	2,167 47
King	14,187 60	19 80	1,479 96	253 94	15,923 30	1,283 50	17,208 80
Kitsap	2,092 50	139 50	2,133 00	1,128 07	3,261 07
Lewis	3,795 30	9 00	364 50	50	4,169 30	2,436 64	6,605 94
Mason	2,274 30	5 40	204 03	2,483 73	1,635 71	4,119 44
Pacific	2,189 20	46 80	22 50	45 00	2,303 60	3,406 41	5,700 01
Pierce	6,620 30	887 50	225 00	7,711 80	2,325 60	10,137 40
San Juan	979 20	18 00	997 20	1,010 50	2,007 70
Skagit	5,896 90	640 30	6,496 20	5,419 02	11,915 31
Skamania	\$41 50	343 80	385 30	911 68	1,300 98
Snohomish	8,730 50	14 40	522 15	9,267 05	4,167 83	13,434 88
Thurston	3,625 20	27 97	3,653 17	2,210 45	6,293 62
Wahkiakum	267 50	109 80	13 50	400 80	253 82	654 62
Whatcom	4,003 20	141 00	4,144 20	3,380 98	7,525 18
Totals.....	\$70,012 80	\$1,071 60	\$5,604 33	\$835 12	\$77,226 85	\$40,940 96	\$118,167 81

COUNTY GAME FUNDS—Continued.
RECEIPTS.

COUNTIES	90% of Resident County Hunting and Fishing Licenses	90% of Non-Resident County Fishing Licenses	30% of All Fines Collected for Violation of the State Game Laws	Receipts from Other Sources	Total Receipts for Year	Amount on Hand March 1, 1914	Grand Totals
EASTERN WASHINGTON DISTRICT—							
Adams	\$930 40	\$1 80	\$632 20	\$502 50	\$1,184 70
Asotin	263 10	46 80	\$10 05	\$0 40	572 36	422 41	995 30
Benton	363 00	363 00	1,234 64	2,237 64
Celanu	3,430 80	37 80	101 25	3,669 85	4,327 70	7,387 55
Columbia	1,363 20	3 60	91 80	1,366 60	696 27	2,064 87
Douglas	232 20	1 80	5 60	239 50	836 10	1,075 60
Ferry	1,426 50	1 80	110 00	1,538 30	1,579 27	3,117 57
Franklin	179 10	179 10	149 90
Garfield	222 50	14 40	306 90	263 85	570 75
Grant	710 10	4 50	714 60	1,394 86	2,109 46
Kititas	3,244 50	1 80	608 85	2 03	3,857 18	2,792 89	6,650 07
Klickitat	1,998 90	316 50	34 65	1,720 35	711 81	2,431 60
Lincoln	1,813 90	9 00	1,823 80	1,473 90	3,302 70
Okanogan	2,275 20	58 50	2,378 70	2,483 51	4,862 21
Pond Oreille	1,757 90	7 20	5 67	45 00	1,862 77	980 71	2,843 48
Spokane	7,373 70	16 20	268 20	102 00	7,771 65	5,109 70	12,881 35
Stevens	4,035 60	45 00	425 06	113 55	4,967 40	3,587 06	8,554 46
Walla Walla	1,913 40	7 20	44 10	450 74	2,414 20	899 35	3,040 55
Whitman	430 20	24 83	176 50	465 08	1,015 00	1,480 08
Yakima	6,092 10	1 80	247 50	6,341 40	2,404 95	8,746 35
Totals.....	\$40,011 30	\$504 00	\$2,122 46	\$801 72	\$43,560 48	\$32,775 98	\$70,316 26
Grand Totals.....	\$110,024 10	\$1,578 60	\$7,766 79	\$1,456 84	\$120,736 33	\$73,087 74	\$194,484 07

* Overdraft, \$29.20.

COUNTY GAME FUNDS—Continued.
DISBURSEMENTS.

COUNTIES	Salaries of Game Wardens	Salaries of Deputy Game Wardens	Salaries of Secretaries, Stenog., Captains, Caretakers, etc.	Travelling Expense of Game Wardens and Deputies	Purchase and Care of Game and Fish	Rewards	Printing, Stationery, etc.	Other Expenses	Total Disbursements March 1, 1914, to February 28, 1915.	Balance on Hand March 1, 1915.
WESTERN WASHINGTON DISTRICT—										
Chehalis	\$1,375 00	\$1,237 85	\$15 00	\$23 57	\$29 55	\$124 25	\$1,254 49	\$7,201 21	\$2,234 00
Challam	1,035 00	136 00	149 01	8 00	1,094 56	2,481 57	1,578 57
Clarke	837 50	49 70	180 00	172 07	102 30	1,493 58	2,855 05	4,082 11
Cowlitz	900 00	188 85	\$10 00	1,068 35	2,681 72
Island	822 00	245 00	219 47	122 70	90 00	1,442 28	404 33
Jefferson	1,080 00	72 00	1,206 47	940 60
King	1,500 00	2,029 25	1,755 70	546 22	6,454 02	277 50	488 75	1,176 64	14,228 08	2,780 72
Kitsap	900 00	286 95	2,500 20	760 87
Lewis	1,200 00	2,138 80	5 00	315 37	272 59	74 45	917 21	4,819 76	1,786 18
Mason	974 89	721 25	50 00	816 19	375 49	25 00	59 35	701 25	2,690 48	1,422 06
Pacific	1,250 00	69 00	105 00	484 03	52 75	81 90	2,324 23	3,375 78
Pierce	1,625 00	1,833 50	27 90	753 47	261 00	74 70	787 41	6,021 56	3,475 85
San Juan	450 00	555 00	1,382 80	82 50	163 97	3,375 78
Skagit	1,500 00	1,531 00	27 87	1,028 31	31 50	38 60	1,075 10	872 30
Skamania	480 00	48 75	102 50	1,435 00	269 60	1,700 05	7,493 85	4,253 46
Shoshone	1,900 00	2,832 00	720 00	1,873 10	94 18	465 30	1,130 43	946 55
Thurston	1,500 00	1,887 50	25 00	296 38	135 76	77 50	245 13	3,700 61	10,584 10	2,890 88
Wahkiakum	300 00	9 35	118 50	1,857 62	48 80	91 00	81 60	5,287 90	915 72
Whatcom	1,494 20	1,348 50	433 80	178 03	168 58	637 58	4,320 69	4,116 49
Totals.....	\$20,453 09	\$16,271 10	\$2,920 82	\$8,313 01	\$12,715 16	\$21 30	\$2,313 31	\$14,663 83	\$78,201 62	\$2,906 19

COUNTY GAME FUNDS—Concluded.
DISBURSEMENTS.

COUNTIES	Salaries of Game Wardens	Salaries of Deputy Game Wardens	Salaries of Secretaries, Stenographers, Caretakers, etc.	Traveling Expense of Game Wardens and Deputies	Purchase and Care of Game and Fish	Rewards	Printing, Stationery, etc.	Other Expenses	Total Disbursements March 1, 1914, to February 28, 1915	Balance on Hand March 1, 1915
EASTERN WASHINGTON DISTRICT—										
Adams	\$600 00			\$85 00			\$40 60	\$98 95	\$783 95	\$150 75
Asotin	430 50			80 50	\$76 37		15 25	200 00	627 87	367 49
Benton	600 00			146 61	30 00		160 50	2,703 87	5,694 86	1,205 78
Chelan	885 65	\$997 50		613 20	644 08	\$20 00		238 25	713 75	2,392 75
Columbia	450 00			169 25	563 50	5 50			782 81	1,351 12
Douglas				494 75	108 00		163 35	108 60	2,232 35	832 79
Ferry	1,126 65	81 00								883 22
Franklin				134 10	136 80		6 70	1 75	138 05	149 90
Garfield		126 00		641 75	641 75		77 45	45 70	954 25	482 70
Grant	1,127 50	140 00	\$17 00	283 17	\$,039 10	20 00	56 31	171 61	4,885 83	1,155 21
Kititas	177 00	580 00			12 10		73 75	6 30	1,771 71	1,764 24
Klickitat					54 75				1,416 00	659 95
Lincoln	1,275 00		12 50	31 35	1,439 19		137 68	104 00	2,945 92	1,896 70
Okanogan	631 75	324 45	167 50	468 54	268 97	36 00	63 15	772 31	2,847 02	1,811 02
Pend Oreille	1,020 00	26 05	180 00	468 54	5,138 76	97 50	322 85	1,233 50	11,069 73	2,623 54
Spokane	1,600 00	1,454 76	645 00	677 26	2,481 14	37 50	86 86	139 52	6,029 92	2,623 54
Stevens	1,080 00	1,258 76	55 00	807 15	2,946 88	5 00		346 00	1,275 16	1,765 30
Walla Walla	275 00			332 28			2 00	22 70	641 10	888 83
Whitman	600 00		268 00	16 40	3,139 73		298 15	867 73	7,006 06	1,740 29
Yakima	1,500 00	541 55		390 83						\$28,730 66
Totals	\$13,829 05	\$5,645 00	\$1,345 00	\$4,730 41	\$18,100 63	\$221 50	\$1,506 70	\$7,220 79	\$22,050 14	\$23,717 12
Grand Totals	\$24,282 14	\$21,916 16	\$4,295 82	\$13,043 42	\$60,845 79	\$742 80	\$3,820 01	\$21,884 62	\$139,800 70	\$68,083 31

* Overdraft, \$13.54.

ARRESTS IN THE COUNTIES OF WESTERN WASHINGTON FOR THE VARIOUS FORMS OF STATE GAME LAW VIOLATIONS.

WESTERN WASHINGTON DISTRICT	Fishing without license.	Fishing out of season.	Catching game fish under 6 inches.	Selling game fish.	Catching more than 50 game fish in one day.	Fishing within 400 feet of fishway or dam.	Fishing with set line or other unlawful appliance.	Using nets in fresh water above tide water.	Fishing with medicated bait, dynamite, snares, etc.	Hunting without license.	Hunting out of season.	Hunting on game preserves.	Selling game birds or song birds.	Killing game birds over limit.	Killing sea gulls.	Killing imported game birds within three years after liberation.	Killing or having in possession birds other than game birds.	Hunting water fowl after sunset.	Hunting on Lake Washington or within one mile thereof.						
Chehalis					
Clallam				
Clarke	12			
Cowlitz	5		
Island	
Jefferson	
King	47	9	63	1	
Kitsap	10
Lewis	2
Mason
Pacific	5
Pierce	6
San Juan
Skagit	11	2
Skamania
Snohomish	17	5	24
Thurston	8
Wahkiakum	1
Whatcom
Totals.....	127	30	121	3	1	10	15	10	3	36	73	49	1	1	2	8	11	64

ARRESTS IN THE COUNTIES OF WESTERN WASHINGTON FOR THE VARIOUS FORMS OF STATE GAME LAW VIOLATIONS—Concluded.

WESTERN WASHINGTON DISTRICT	Shooting from power boat or sink box.	Violating sneak boat law.	Selling game animals.	Killing game animals for hides or horns.	Hunting deer with dogs.	Killing deer while in rivers, lakes or body of salt water.	Killing deer unlawfully on islands.	Having game birds, animals or fish unlawfully in possession.	Shipping game birds, animals or fish in violation of the law.	Using trap or snare for animals or birds.	Hunting with artificial lights.	Falling to construct or maintain fishway over dams or other obstructions.	Casting sawdust, lumber waste, etc., in the waters of the State.	Aliens carrying firearms.	Obstructing wardens or game commissions in the discharge of their duties.	Impersonating game warden.	Miscellaneous offenses.	Total number arrests.	Total number convictions obtained.
	Chehalis				2	1			5					6	2				17
Clallam	1				2				1					1				17	14
Clarke														1				30	21
Cowlitz					3													10	5
Island						1												8	3
Jefferson					1				1									8	3
King					1		2	11				1		4	2		60	237	197
Kitsap					5			4			4		5					33	29
Lewis								2										21	15
Mason			2		1			2			2							12	11
Pacific								2										12	12
Pierce								5										72	72
San Juan					1			2						2				72	72
Skagit		8		1		1		1	2	2								4	4
Skamania								1										122	79
Snohomish								2										1	1
Thurston						1			1							1		79	75
Wahkiakum	1							3										33	32
Whatcom									1									2	2
																		17	14
Totals	2	8	10	3	16	3	2	24	3	2	0	1	10	11	2	1	60	750	602

ARRESTS IN THE COUNTIES OF EASTERN WASHINGTON FOR THE VARIOUS FORMS OF STATE GAME LAW VIOLATIONS.

EASTERN WASHINGTON DISTRICT	Fishing without license.	Fishing out of season.	Catching game fish under 6 inches.	Selling game fish.	Catching more than 50 game fish in one day.	Fishing within 100 feet of highway or dam.	Fishing with set line or other unlawful appliance.	Fishing with medicated bait, dynamite, snare, etc.	Fishing in closed stream.	Hunting without license.	Hunting out of season.	Hunting on game preserve.	Selling game birds or song birds.	Killing imported game birds within three years after liberation.	Killing or having in possession birds other than game birds.	Hunting water fowl after sunset.	Shooting from power boat or sink box.	Selling game animals for killing game animals for bides or horns.	Hunting deer with dogs.	Killing deer or other game animals over limit.	Killing beaver.	Having game birds, animals or fish unlawfully in possession.	Having game birds, animals or fish unlawfully in possession.	Castling sawdust, lumber waste, etc., in the waters of the State.	Aliens carrying firearms.	Obstructing wardens or game commissions in the discharge of their duties.	Total number arrests.	Total number of convictions obtained.	
	Adams																												
Asotin																													3
Benton																													9
Chelan	4				1		1								1		1												13
Columbia	4		3																										15
Douglas																													15
Ferry																													14
Franklin																													10
Garfield																													1
Grant																													1
Kittitas					1																								1
Klickitat	6	1																											90
Lincoln		1																											13
Okanogan																													3
Pend Oreille	4		1																										5
Spokane	15	4	2	1	2	5	1		2	1	1	2			6			1	1	1		1						11	
Stevens	5				2					3																			45
Walla Walla		3																											39
Whitman																2													14
Yakima																													4
Totals	40	13	20	1	4	5	6	1	3	12	33	3	2	1	8	6	1	4	1	1	2	18	4	4	18	2	20	191	

**TOTAL ARRESTS FOR THE VARIOUS FORMS OF GAME LAW
VIOLATIONS IN THE STATE OF WASHINGTON FROM MARCH
1, 1914, TO FEBRUARY 28, 1915.**

Fishing without license.....	167
Fishing out of season.....	43
Catching game fish under 6 inches.....	141
Selling game fish.....	4
Catching more than 50 game fish in one day.....	5
Fishing within 400 feet of fishway or dam.....	15
Fishing with set line or other unlawful appliance.....	21
Using nets in fresh water above tide water.....	10
Fishing with medicated bait, dynamite, snares, etc.....	4
Fishing in closed stream.....	3
Hunting without license.....	58
Hunting out of season.....	106
Hunting on game preserves.....	52
Selling game birds or song birds.....	3
Killing game birds over limit.....	1
Killing sea gulls.....	2
Killing imported game birds within three years after liberation.....	9
Killing or having in possession birds other than game birds.....	19
Hunting water fowl after sunset.....	70
Hunting on Lake Washington or within one mile thereof.....	11
Shooting from power boat or sink box.....	3
Violating sneak boat law.....	8
Selling game animals.....	14
Killing game animals for hides or horns.....	4
Hunting deer with dogs.....	17
Killing deer while in rivers, lakes or body of salt water.....	3
Killing deer or other game animals over limit.....	1
Killing deer unlawfully on islands.....	2
Killing beaver.....	2
Having game birds, animals or fish unlawfully in pos- session.....	52
Shipping game birds, animals or fish in violation of the law.....	3
Using trap or snare for the taking of game animals or birds.....	2
Hunting with artificial lights.....	6
Failing to construct or maintain fishway over dams or other obstructions.....	1
Casting sawdust or lumber waste, etc., in the waters of the State.....	14
Aliens carrying firearms.....	29
Obstructing wardens or game commissions in the dis- charge of their duties.....	4
Impersonating game warden.....	1
Miscellaneous offenses.....	60
Total Arrests.....	970
Total convictions obtained.....	793
(Percentage of convictions obtained, .82)	

SALARIED AND NON-SALARIED DEPUTY GAME WARDENS, AND GUNS AND FISHING GEAR SEIZED AND CONFISCATED.

COUNTIES	Number Salaried Deputies Appointed	Number Non-Salaried Deputies Appointed	Guns and Fishing Gear Seized and Confiscated	
WESTERN WASHINGTON DISTRICT—				
Chehalis	2	7		
Clallam	3	5	3 Guns	
Clarke		30	1 Gun	1 Drift Net
Cowlitz		11		
Island	5	3		
King	5	102	3 Guns	2 Fishing Rods
Kitsap		25	17 Guns	
Lewis	6	1	1 Gun	
Mason	1	2		
Pacific		19		
Pierce	1	32		
San Juan	2	1		
Skagit	4	5		
Skamania	1	1		
Snohomish	4	22		
Thurston	5	10		
Wahkiakum		5		
Whatecom	3			3 Set Nets
Totals.....	42	281	25 Guns	6 Fishing Gear
EASTERN WASHINGTON DISTRICT—				
Adams		20		
Asotin		4		
Benton	1			
Chelan	7	14	1 Gun	12 Set Lines 3 Nets
Columbia	1			
Douglas		9		
Ferry	1	20		
Grant	2	8		
Kittitas	1	4		
Klickitat	3	4		
Okanogan	2	30		
Pend Oreille		4		
Spokane	4	32	5 Guns	1 Spear and Jack-light.
Stevens	1	21	8 Guns	
Walla Walla		5		1 Fishing Rod 5 Chinese Lines
Yakima		12		
Totals.....	23	187	14 Guns	22 Fishing Gear
Grand Totals.....	65	468	39 Guns	28 Fishing Gear

Generated at Montana State University on 2023-04-03 22:11 GMT / https://hdl.handle.net/2027/uiug.30112119685037
Public Domain, Google-digitized / http://www.hathitrust.org/access_use#pd-google

TROUT HATCHERIES CONSTRUCTED DURING THE YEAR.

COUNTIES	Number	Cost	Capacity
WESTERN WASHINGTON DISTRICT—			
Skamania	1	* \$255 20	1,500,000
Snohomish	1	1,800 00	1,500,000
Whatcom		† 697 58	2,500,000
Totals.....	2	\$2,752 78	5,500,000
EASTERN WASHINGTON DISTRICT—			
Chelan	1	\$2,500 00	2,000,000
Kittitas	1	1,350 00	1,500,000
Pend Oreille	1	400 00	1,000,000
Totals.....	3	\$4,250 00	4,500,000
Grand Totals.....	5	\$7,002 78	10,000,000

* Construction just commenced. † Existing hatchery enlarged.

OUTPUT OF THE COUNTY HATCHERIES FOR THE YEAR.

COUNTIES	Out-Throat	Eastern Brook	Rainbow	Silver	Catfish	Chinook Salmon	Total
WESTERN WASHINGTON DISTRICT—							
King	85,000	90,000	102,000				278,000
Whatcom ...	* 507,000			* 3,000,000	1,000,000		4,507,000
Totals....	592,000	90,000	102,000	3,000,000	1,000,000		4,785,000
EASTERN WASHINGTON DISTRICT—							
Chelan						1,000,000	1,000,000
Kittitas	100,000						100,000
Pend Oreille..	168,000						168,000
Stevens	31,000	301,000	4,000				336,000
Yakima	100,000						100,000
Totals....	399,000	301,000	4,000			1,000,000	1,704,000
Grand Totals....	992,000	391,000	106,000	3,000,000	1,000,000	1,000,000	6,489,000
* Fry on hand:							
	Silvers					2,000,000	
	Out-throats					125,000	2,125,000
	Total Planted.....						4,364,000

WHERE THE FRY REARED IN THE COUNTY HATCHERIES WERE PLANTED.

WESTERN WASHINGTON DISTRICT	WATERS WHERE PLANTED	Cut-Throat	Eastern Brook	Rainbow	Silver	Cutfish	Chinook Salmon	Totals
KING COUNTY.....	Covington Creek			5,000				
	Angle Lake			7,000				
	Skykomish River			18,000				
	Small Stream at Tye			6,000				
	Squak Creek	6,000	5,000					
	Shoquahine River	20,000	17,000					
	Commonwealth Creek		10,000					
	Snow Lake		8,000					
	Brannon Slough							
	Copper's Slough				2,000			
	Tates Creek				4,000			
	Pikes Creek	4,000			2,000			
	Schook Creek	2,000						
	Brannon Creek	4,000						
	Raging River	10,000						
	Thomas Creek	10,000						
	Boise Creek		40,000					
	Tolt River				12,000			
	Tokul Creek	20,500		10,000	20,000			
	Miller River	2,000						
Jones Creek	3,000							
Issaquah Creek	4,000							
Burke Creek	50							
WHATCOM COUNTY.....	Lake Whatcom	82,000			\$75,000			
	Lake Luma				15,000			
	Lake Samish				40,000			
	Lake Padden				40,000			
	Silver Lake				30,000			
	Sumas Creek					1,000,000		
	Totals.....	408,000	90,000	102,000	1,000,000	1,000,000		2,600,000
								2,382,000

WHERE THE FRY REARED IN THE COUNTY HATCHERIES WERE PLANTED—Concluded.

	WATERS WHERE PLANTED	Cut-Throat	Eastern Brook	Rainbow	Silver	Catfish	Chinook Salmon	Totals
EASTERN WASHINGTON DISTRICT								
CHELAN COUNTY.....	Wenatchee River	100,000					1,000,000	1,000,000
KITTITAS COUNTY.....	Yakima River and Tributaries..							100,000
PEND OREILLE COUNTY.....	Sullivan Lake, Yancum Lake Anderson Lake, Sebasteen Lake	108,000						108,000
STEVENS COUNTY.....	Leon Lake, Deer Lake.....	10,000 10,000						
	Twelve Mile Creek.....	1,000						
	Chewekah Creek.....	10,000						
	Gold Creek.....		5,000					
	Spring Creek.....		5,000					
	Deep Creek.....		15,000					
	Prouly Creek.....		1,000					
	Chamokane Creek.....		20,000					
	Brown's Lake.....		2,000					
	Mill Creek.....		10,000					
	Swiss Creek.....		10,000					
	Dragon Creek.....		10,000					
	Stevens Run.....		5,000					
	Crystal Creek.....		10,000					
	Joe Creek.....		5,000					
	Squaw Creek.....		3,000					
	Big Sheep Creek.....		10,000					
	Little Sheep Creek.....		5,000					
	Onton Creek.....		20,000					
	Fifteen Mile Creek.....		10,000					
	South Fork Deep Creek.....		10,000					
	East Cedar Creek.....		5,000					
	Colville River.....		15,000	4,000				
	Thomas Lake.....		55,000					
	Twin Lake.....		15,000					
	Deep Creek Lake.....		10,000					
	Pepone Lake.....		5,000					
	Jumpoff Lake.....		5,000					
	Phelan's Lake.....		10,000					
	Moses Lake.....		5,000					
	Turtle Lake.....		5,000					
	Hunter Creek.....		2,000					
	Harvey Creek.....		5,000					
	Narcesse Creek.....		5,000					
YAKIMA COUNTY.....	Bumping River.....	100,000						
	Totals.....	309,000	301,000	4,000			1,000,000	1,704,000

**GAME FARMS OWNED BY THE COUNTY GAME COMMISSIONS,
AND OUTPUT THEREOF.**

COUNTIES	Game Farms Created During the Year		Total Game Farms Now Owned by County Game Commissions		Output of County Game Farms for the Year	
	No.	Acres	No.	Acres	No.	Varieties
WESTERN WASHINGTON DISTRICT—						
Island	1	2½	1	2½		
King			1	20	915	Chinese Pheasants
Kitsap					200	Chinese Pheasants
Snohomish	1	10	1	10		
Thurston	1	10	1	10		
Totals.....	3	22½	4	42½	1,115	
EASTERN WASHINGTON DISTRICT—						
Spokane	1	1	1	1	16	Silver Pheasants..
Stevens	1	1	1	1	12	Chinese Pheasants
Totals.....	2	2	2	2	8	
Grand Totals.....	5	24½	6	44½	1,123	

Generated at Montana State University on 2023-04-03 22:11 GMT / https://hdl.handle.net/2027/uiug.30112119685037
Public Domain, Google-digitized / http://www.hathitrust.org/access_use#pd-google

GAME BIRDS AND GAME ANIMALS PURCHASED BY THE GAME COMMISSIONS AND LIBERATED DURING THE YEAR.

COUNTIES	GAME BIRDS		GAME ANIMALS	
	No.	Variety	No.	Variety
WESTERN WASHINGTON DISTRICT—				
Ocheltis	{ 54 6 6 4	Chinese Pheasants Golden Pheasants Silver Pheasants Mongolian Pheasants		
Kitsap	25	Chinese Pheasants		
Lewis	98	Hungarian Partridges		
Pacific	100	Chinese Pheasants		
Pierce	411	Chinese Pheasants		
Skagit	600	Hungarian Partridges		
Total.....	1,302			
EASTERN WASHINGTON DISTRICT—				
Asotin	26	Hungarian Partridges		
Benton	12	Chinese Pheasants		
Obelan	250	Hungarian Partridges		
Douglas	140	Hungarian Partridges		
Ferry	50	Hungarian Partridges		
Kittitas	26	Ring Necks		
Okanogan	{ 400 8 6	Hungarian Partridges Golden Pheasants Silver Pheasants		
Spokane	417	Quail	25	Elk
Stevens				
Walla Walla	{ 100 108 600	Hungarian Partridges California Quail Hungarian Partridges		
Yakima	{ 90 80 20 12 876	Sealey Partridges Chinese Pheasants Reeves Pheasants Wild Turkeys Bob White Quail		
Totals.....	3,221		25	
Grand Totals.....	4,523		25	

TROUT FRY PLANTED FROM THE STATE HATCHERIES DURING THE FISCAL YEAR ENDING FEBRUARY 28, 1915.

HATCHERIES	Beards- lee	Black- Spotted	Cut- Throat	Eastern Brook	Rain- bow	Silver	Totals
Lake Chelan Trout Hatchery			346,205		15,287		361,492
Dumpka Lake Eyeing Station			54,855		52,642		107,497
Lake Crescent Trout Hatchery	224,000						224,000
Lewis River Trout Hatchery			70,000				70,000
Little Spokane Trout Hatchery			170,115	838,125	223,181	553,000	1,784,422
Walla Walla Trout Hatchery		325,000	154,475		48,045	141,515	669,035
Green River Salmon Hatchery			165,430				165,430
Nisqually Salmon Hatchery			38,806				38,806
Samish Salmon Hatchery			16,000				16,000
Snohomish Salmon Hatchery			271,795				271,795
Oleee State Fish Com- missioner			14,000			12,160	26,160
Totals.....	224,000	325,000	1,301,679	838,125	339,158	706,675	3,734,730

Generated at Montana State University on 2023-04-03 22:11 GMT / https://hdl.handle.net/2027/uug.30112119685037
 Public Domain, Google-digitized / http://www.hathitrust.org/access_use#pd-google

WHERE THE FRY FURNISHED BY THE STATE HATCHERIES WERE PLANTED.

WESTERN WASHINGTON DISTRICT	Beardslee	Black- Spotted	Cut- Throat	Eastern Brook	Rainbow	Silver	Steelhead Salmon	Silver Salmon	Chinook Salmon	Totals
CHEHALIS COUNTY—										
Upper Wynoche River.....		20,000								
Wishkah Creek.....		15,000								
Stevens Creek.....		15,000								
Neshkah River.....			10,000							
North Fork of Wishkah River.....			5,300							
Cook Creek.....			7,000							72,306
CLALLAM COUNTY—										
Lake Sutherland.....	16,000									
Barres Creek.....	100,500									
Lake Crescent.....	88,583									205,083
CLARKE COUNTY—										
Whipple Creek.....		10,000								
Salmon Creek.....		5,000	25,000							
Washougal River.....		10,000								
Lackamas Creek.....			15,000							
Lewis River.....			2,000							67,000
COWLITZ COUNTY—										
Second Creek.....			2,300							
Third Creek.....			2,300							
Fourth Creek.....			2,400							
Globe Creek.....			10,000							
Hemlock Creek.....			10,000							27,000
JEFFERSON COUNTY—										
Haller's Fountain at Port Townsend.....	100									
Deputy's Lake.....	9,000									
Gibbs Lake.....	9,900									19,000
KING COUNTY—										
Skykomish River.....			36,795							
Lake Washington.....							8,000	21,000	12,000	
Green Lake.....								6,000		
Cow Lake.....							20,000			103,795

WHERE THE FRY FURNISHED BY THE STATE HATCHERIES WERE PLANTED—Continued.

WESTERN WASHINGTON DISTRICT	Beardslee	Black-Spotted	Cut-Throat	Eastern Brook	Rainbow	Silver	Steelhead Salmon	Silver Salmon	Chinook Salmon	Totals
KITSAP COUNTY—										
Blackjack Creek			4,000				3,000			
Horseshoe Lake			4,000				3,000			
Panther Lake			10,000							
Gorst Creek							9,518			31,518
LEWIS COUNTY—										
Middle Fork of Newaukum River			10,000				5,000			
Stillwater Creek			10,000							
Lincoln Creek			15,000				5,000			
Chehalis River							6,000			
Dunn Creek							6,000			57,000
MASON COUNTY—										
Benson Lake			3,000							
Forbes Lake			7,000							10,000
PACIFIC COUNTY—										
Tributary of Palix River			15,430							15,430
PIERCE COUNTY—										
Murray Creek		10,000	12,500							
Upper Muck Creek		10,000	12,500							
Mashell River		10,000	12,500							
Lynch Creek		10,000								
Volight Creek		10,000								
Opoh Lake			22,500							110,000
SAN JUAN COUNTY—										
Cascade Lake			10,000							
Twin Lakes			10,000							20,000
SKAGIT COUNTY—										
Lake Camel			15,000							
Pass Lake			5,000							
Friday Creek						12,100				32,100

WHERE THE FRY FURNISHED BY THE STATE HATCHERIES WERE PLANTED—Continued.

WESTERN WASHINGTON DISTRICT	Beardslee	Black-Spotted	Cut-Throat	Eastern Brook	Rainbow	Silver	Steelhead Salmon	Silver Salmon	Chinook Salmon	Totals
SKAMANIA COUNTY—										
Rock Creek		15,000								
Windemer Creek		10,000								25,000
SNOHOMISH COUNTY—										
Boulder Creek		50,000								
Silver Lake			8,000							
Martha Lake			40,000							48,000
THURSTON COUNTY—										
Spurgeon Creek			10,000							
Percival Creek			3,500							
Ofut Lake			14,000				4,638			
Tributary of Des Chutes River.....			40,000							72,198
WAHLAKUM COUNTY—										
Elechman River			4,000							
East Fork of Skamokawa Creek.....			3,000							7,000
WHATCOM COUNTY—										
Lake Whatcom			40,000							40,000
Totals, Western Washington District..	224,093	200,000	409,031			12,160	70,216	27,000	12,000	1,014,500
Total trout fry.....										906,284
Total salmon fry planted in fresh water.....										109,216

WHERE THE FRY FURNISHED BY THE STATE HATCHERIES WERE PLANTED—Continued.

EASTERN WASHINGTON DISTRICT	Beardslee	Black-Spotted	Cut-Throat	Eastern Brook	Rainbow	Silver	Steelhead Salmon	Silver Salmon	Chinook Salmon	Totals
ADAMS COUNTY—										
Oow Creek				20,000	13,000	20,000				66,000
Harder Creek				13,000						
ASOTIN COUNTY—										
South Fork Creek				10,000						
Charley Fork Creek				5,000						
George Creek				5,000						
Main Asotin Creek				5,000						
South Fork Asotin Creek			20,000							45,000
OSHELAN COUNTY—										
Leide River				47,000		28,000				
Lake Chelan			35,516							
Dumпка Lake			54,855		32,642					
Squillechuck Creek			20,000							528,613
COLUMBIA COUNTY—										
South Touchet River			14,000							
North Fork Touchet River			14,000							
Middle Fork Touchet River			14,000							
Tucanon River						23,210				65,210
DOUGLAS COUNTY—										
Douglas Creek			20,000	65,000						85,000
FERRY COUNTY—										
San Poil Lake				25,000						
San Poil River				25,000						
Curlew Creek			5,000							
O'Brien Creek			15,000							
Sands Lake					10,000					80,000
GARFIELD COUNTY—										
Palaha Creek			38,475							
Tucanon River			18,000							
Dendman Creek			6,000							62,475
GRANT COUNTY—										
Blue Lake				12,500		25,000				
Fresh Water Lake				12,500		25,000				
Head of Crab Creek				25,000						
Crab Creek			20,000							120,000

Generated at Montana State University on 2023-04-03 22:11 GMT / https://hdl.handle.net/2027/uiug.30112119685037
 Public Domain, Google-digitized / http://www.hathitrust.org/access_use#pd-google

WHERE THE FRY FURNISHED BY THE STATE HATCHERIES WERE PLANTED—Continued.

EASTERN WASHINGTON DISTRICT	Beardslee	Black-Spotted	Cut-Throat	Eastern Brook	Rainbow	Silver	Steelhead Salmon	Silver Salmon	Chinook Salmon	Totals
KITTITAS COUNTY—										
Kachess Lake			25,000							
Cle Elum Lake			9,000							
Teanaway River			9,000							
Big Creek			15,000							
Nanum Creek			11,000							
Manastash Creek			12,000							
Tanum Creek			11,000							
Yakima River			8,000							
Lake Keechelus			7,000							107,000
KLICHTAT COUNTY—										
White Salmon River			20,000					25,000		
Trout Lake			20,000					25,000		40,000
LINCOLN COUNTY—										
Pacific Lake										
Alexander Lake										
Crab Creek				25,000						
Hawk Creek				25,000						
Indian Creek										
Spokane River					5,000					
					15,000					120,000
OKANOGAN COUNTY—										
Lost Lake				50,000						
Myers Creek				15,000						
Antwyrne Creek				30,000						
Siwash Creek				30,000						
Conconully Lake			20,080		15,287					
Crawfish Lake					34,560					
Ponaparte Lake			10,118		25,388					231,047
PEND OREILLE COUNTY—										
Little Spokane River				10,000						
Skookum Lake				10,000						
Kalispel Creek				5,000						
Yocum Lake				5,000						
Hamilton's Lake				5,000						
Lost Lake				5,000						
Sullivan Lake					10,000					
New Moon Lake					12,688					
Sachenee Lake		25,000								167,000

WHERE THE FRY FURNISHED BY THE STATE HATCHERIES WERE PLANTED—Concluded.

	Beardslee	Black-Spotted	Cut-Throat	Eastern Brook	Rainbow	Silver	Steelhead Salmon	Silver Salmon	Chinook Salmon	Totals
EASTERN WASHINGTON DISTRICT										
SPOKANE COUNTY—										
Marshall Creek		40,000	40,000	50,000		200,000				600,000
Spokane River				206,125	64,343					
STEVENS COUNTY—										
Cottonwood Creek				35,000						
Williams Lake						25,000				
Pierre's Lake						20,000				
Twin Lakes						20,000				100,000
WALLA WALLA COUNTY—										
Tributary of Mill Creek			30,000	35,000	18,045	50,085				104,030
Mill Creek		20,000	30,000			20,000				
Toucheb River										
WHITMAN COUNTY—										
North Palouse River				30,000						
South Palouse River				10,000						
Union Flat Creek				10,000						
Rock Lake						95,350				
Middle Fork Palouse River (above dam)					20,000					
Stephens Lakes						11,000				
Babcock Lakes						11,000				187,320
YAKIMA COUNTY—										
Natches River		40,000				50,000				90,000
Alney Lake										
Totals, Eastern Washington District		125,000	82,000	88,125	339,138	694,515				2,829,416
GRAND TOTALS.....	254,073	325,000	1,301,679	88,125	339,138	706,675	70,216	27,000	12,000	3,813,916
Total trout fry.....										
Total salmon fry planted in fresh water.....										
3,734,730										
109,216										

EGGS SECURED BY THE STATE HATCHERIES AND FURNISHED TO THE COUNTY HATCHERIES FOR HATCHING AND PLANTING WITHIN THEIR RESPECTIVE COUNTIES—IN LIEU OF FRY.

FURNISHED TO	TROUT EGGS				
	Out-Throat	Eastern Brook	Rainbow	Silver	Totals
King County				250,000	250,000
Snohomish County				125,000	125,000
Kittitas County		25,000		75,000	100,000
Stevens County	69,900	20,000	4,225	150,000	244,125
Yakima County		20,000		150,000	170,000
Totals.....	69,900	65,000	4,225	750,000	889,125

FURNISHED TO	SALMON EGGS		
	Silverside	Steelhead	Totals
King County		307,000	307,000
Snohomish County	500,000		500,000
Totals.....	500,000	307,000	807,000

WHERE THE TROUT FRY, OTHER THAN THAT FURNISHED BY THE COUNTY AND STATE HATCHERIES, WERE PLANTED.

	Black-Spotted	Cut-Throat	Eastern Brook	Lake	Mack-inaw	Rain-bow	Totals
WESTERN WASHINGTON DISTRICT							
CHEHALIS COUNTY							
East Hoquiam River)			100,000			100,000	200,000
Humpullips River)							
CLALLAM COUNTY —							
Salt Creek	30,000						30,000
ISLAND COUNTY —							
Carp Lake		100,000					100,000
KING COUNTY —							
Lake Dorothy			5,000				5,000
PIERCE COUNTY —							
American Lake					50,000		50,000
SNOHOMISH COUNTY —							
Silver Lake			5,000				5,000
Totals	30,000	100,000	110,000		50,000	100,000	390,000
EASTERN WASHINGTON DISTRICT							
CHELAN COUNTY —							
Icicle River			125,000				125,000
FERRY COUNTY —							
Granite Creek		16,000	22,000				
Curlaw Lake		16,000	22,000				
South Fork San Poll River		16,000	22,000				
Swan Lake		16,000	22,000				
Long Lake		16,000	22,000				
Boulder Creek	5,000						
Deadman Creek	5,000						200,000
KITTITAS COUNTY —							
Yakima River and Tributaries		50,000					50,000
STEVENS COUNTY —							
Loon Lake				12,000			
Deer Lake				12,000			
Deep Creek	35,000						
Sheep Creek	20,000						
Pepone Lake	5,000						
Black Lake						50,000	134,000
WHITMAN COUNTY —							
Rock Lake			65,000				65,000
Totals	70,000	130,000	300,000	24,000		50,000	574,000
Grand Totals	100,000	230,000	410,000	24,000	50,000	150,000	964,000

Generated at Montana State University on 2023-04-03 22:11 GMT / https://hdl.handle.net/2027/uiug.30112119685037
 Public Domain, Google-digitized / http://www.hathitrust.org/access_use#pd-google

WHERE THE FRY OF GAME FISH, OTHER THAN TROUT, WERE PLANTED.

	Black Bass	Crappies	Perch	Totals
WESTERN WASHINGTON DISTRICT				
CLALLAM COUNTY—				
Pleasant Lake	15,000			15,000
KING COUNTY—				
McDonald Lake	2,500		2,500	
Meadowbrook Lake	2,000		6,000	13,000
KITSAP COUNTY—				
Johnson Lake	70,000	65,000	65,000	
Kitsap Lake	50,000	50,000		
Wilson's Lake		150,000		450,000
PIERCE COUNTY—				
American Lake		240	150	
Stellacoom Lake		240	150	
Spanaway Lake			59	
Balch's Lake			59	
Wapato Lake		80		978
SNOHOMISH COUNTY—				
Goodwin Lake	10,000	10,000	10,000	30,000
Totals.....	149,500	275,560	83,918	508,978
EASTERN WASHINGTON DISTRICT				
GRANT COUNTY—				
Oiwell's Lake	1,500		1,500	
Moses Lake	50,000			53,000
SPOKANE COUNTY—				
Clear Lake	35,000	35,000		
Newlan Lake	35,000	35,000		
Liberty Lake	18,000	17,000		
Knight's Lake	18,000	17,000		
Horseshoe Lake	18,000	17,000		
Williams Lake	23,000	23,000		
Calvert Lake	10,000	10,000		311,000
Totals.....	208,500	154,000	1,500	364,000
Grand Totals.....	358,000	429,560	85,418	872,978

TOTAL FISH FRY PLANTED, AND GAME BIRDS AND ANIMALS LIBERATED IN THE STATE OF WASHINGTON FROM MARCH 1, 1914, TO FEBRUARY 28, 1915.

TROUT FRY PLANTED:

Beardslee	224,093	
Blackspotted	425,000	
Cut-throat	2,398,679	
Eastern Brook Lake	1,639,125	
Muckinaw	24,000	
Rainbow	50,000	
Silver	595,158	
	1,706,675	7,062,730

FRY OF OTHER GAME FISH PLANTED:

Black Bass	358,000	
Catfish	1,000,000	
Crappies	429,560	
Perch	85,418	1,872,978

SALMON FRY PLANTED IN FRESH WATER:

Chinook	1,012,000	
Silver	27,000	
Steelhead	70,216	1,109,216
Total.....		10,044,924

GAME BIRDS LIBERATED:

Chinese Pheasants	682	
Golden Pheasants	14	
Mongolian Pheasants	4	
Reeves Pheasants	20	
Silver Pheasants	12	
Hungarian Partridges	2,262	
Sealey Partridges	90	
Ring Necks	26	
Quail	417	
Bob White Quail	876	
California Quail	108	
Wild Turkeys	12	
Total.....		4,523

GAME ANIMALS LIBERATED:

Elk		25
-----------	--	----

GAME PRESERVES.

COUNTIES	Number Acres Set Aside for Game Preserves During the Year	Total Acres Now in Game Preserves in County
WESTERN WASHINGTON DISTRICT—		
Chehalis		11,520
King		180
Pierce		285,320
San Juan	3,000	3,000
Skagit		8,980
Thurston		64,000
Totals.....	3,000	373,000
EASTERN WASHINGTON DISTRICT—		
Asotin	15,000	15,000
Chelan		39,560
Columbia	16,000	16,000
Ferry	69,120	69,120
Kititlas	6,400	6,400
Okanogan	69,120	69,120
Spokane	5,880	5,880
Stevens	2,560	2,560
Yakima	9,600	9,600
Totals.....	193,680	233,240
Grand Totals.....	196,680	606,240

Generated at Montana State University on 2023-04-03 22:11 GMT / https://hdl.handle.net/2027/uug.30112119685037
Public Domain, Google-digitized / http://www.hathitrust.org/access_use#pd-goo

PROPERTY OF THE COUNTY GAME COMMISSIONS.

COUNTIES	Automobiles	Motorcycles	Launches	Horses
WESTERN WASHINGTON DISTRICT—				
Chehalis	1	1	1
Clarke	1
King	1
Kitsap	1
Lewis	2
Mason	1
Pierce	1
Snohomish	1	1	1
Thurston	1
Totals.....	6	6	2
EASTERN WASHINGTON DISTRICT—				
Benton	1
Ferry	2
Kittitas	1
Totals.....	1	1	2
Grand Totals.....	6	7	3	2

REPORTED ACCIDENTS.

KING COUNTY:

Three deaths resultant from accidental gun shot wounds.

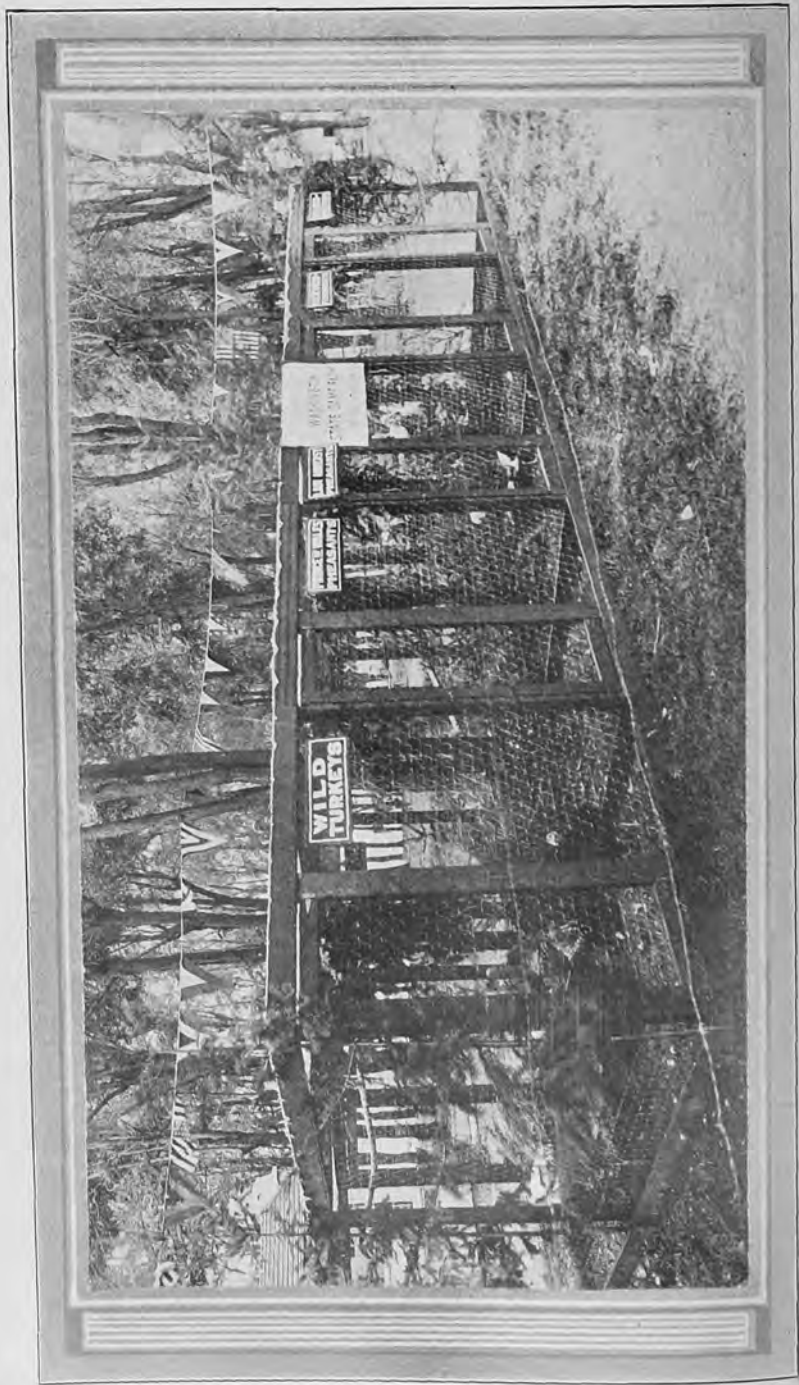
PIERCE COUNTY:

One hunter accidentally shot through the ankle and one through the hand. Both recovered.

SNOHOMISH COUNTY:

Two men drowned while out in an unsafe boat on a stormy night after game.

UNIVERSITY OF ILLINOIS AT URBANA-CHAMPAIGN



STATE GAME FAIRM EXHIBIT AT THE STATE FAIR, YAKIMA, WASHINGTON.