

5  
799  
F2br  
1966-1968

# JENNIAL REPORT


Montana Fish and Game Commission

PLEASE RETURN

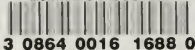
STATE DOCUMENTS COLLECTION

JUN 27 1978

MONTANA STATE LIBRARY  
930 E Lyndale Ave.  
Helena, Montana 59601



**MAY 1, 1966**  
**APRIL 30, 1968**



MONTANA  
FISH & GAME COMMISSION  
BIENNIAL  
REPORT

April 30, 1966—May 1, 1968

CONTENTS

Cover photo by Gerry Atwell

	Page
Administration .....	2
Fisheries Management .....	3
Game Management .....	9
Law Enforcement .....	13
Recreation and Parks .....	15
Information and Education .....	17
License Sales, 1957 — 1967 .....	19
Statement of Income .....	20
Detail of Expenditures .....	23
License Sales by Counties .....	30

STATE OF MONTANA

DEPARTMENT OF  
FISH AND GAME



The Honorable Tim Babcock  
Governor of Montana  
Helena, Montana

Dear Governor Babcock:

The Montana Fish and Game Commission respectfully submits its biennial report for the period of May 1, 1966 through April 30, 1968.

This report briefly summarizes major activities of the department and presents an accounting of department income and expenditures for this period.

Respectfully submitted,

Lyle H. Tauck, Chairman  
W. E. Staves, Vice Chairman  
E. G. Leipheimer, Jr., Member  
John T. Hanson, Sr., Member  
J. J. Klabunde, Member



Lyle H. Tauck

John T. Hanson Sr.



W. E. Staves



E. G. Leipheimer

J. J. Klabunde



MONTANA  
Fish & Game Commission

Lyle H. Tauck, Hammond—Chairman  
W. E. Staves, Polson—V. Chairman  
E. G. Leipheimer, Butte  
John T. Hanson Sr., Malta  
J. J. Klabunde, Havre



# PRESERVING A LIVABLE ENVIRONMENT



Frank H. Dunkle

Fifteen or 20 years ago most of us couldn't really visualize how rapidly the world was shrinking, how dramatically the environment was changing, or how the philosophies and standards of man were re-shaping. Many Montanans felt, and probably hoped, that our state was so isolated, so big and backward that it would always be a land of small towns, open range and clear streams.

Not so! The small towns have been abandoned for cities which are becoming ever larger. The open range has been fenced. The dwindling streams which yet remain clear are eyed covetously by water-hungry states hundreds of miles away. Missile silos remind us that we are part of a global society, like it or not. The appearance of "hippies" in our society speaks of new philosophies and new standards.

The course that mankind is taking, many say, is one of blundering rather than of purposeful direction. The price paid for lack of direction is the deterioration of Montana's big sky country. We have spread persistent poisons and radio-active materials widely. The components of our atmosphere are being so radically changed that some scientists fear the results will eventually spell doom for our state, our world. In this age of specialization, it is difficult for the specialist to relate his actions to total water, land and air.

We can progress. In economic and industrial evolution there is growing a demand for direction. Gradually mankind is coming to realize that survival will ultimately depend upon fitting himself into his environment rather than warping the environment to his whims. Such things as air and water pollution and the maintenance of natural features are receiving more and more concern.

Over the years there have been some gifted persons with vision to foresee the loss and destruction of our natural resources. These have been the great leaders in conservation movements. Gifford Pinchot, Olaus Murie, and Rachel Carson are but a few of the memorable ones. Over the years also, there have been agencies which by the very nature of their responsibilities have fought to salvage from progress what we now term a "livable environment". The fight to maintain a livable environment has been an uphill and often lonely battle. Yet it is certain that the inhabitant of the future will breathe clean air. He will have treasured fragments of wilderness, cool streams in which to fish, and forests in which he may hunt. He will have the leaders and agencies of conservation in the past to thank for forestalling complete deterioration of his world.

We of the Montana Fish and Game Department are proud and honored in being able to play an important role in the preservation of a "livable environment".

Frank H. Dunkle  
Director  
Montana Fish & Game Department

# DEPARTMENT ADMINISTRATION

For administrative purposes, the state is divided into seven supervisory districts with headquarters in Kalispell (District 1); Missoula (District 2); Bozeman (District 3); Great Falls (District 4); Billings (District 5); Glasgow (District 6); and Miles City (District 7).

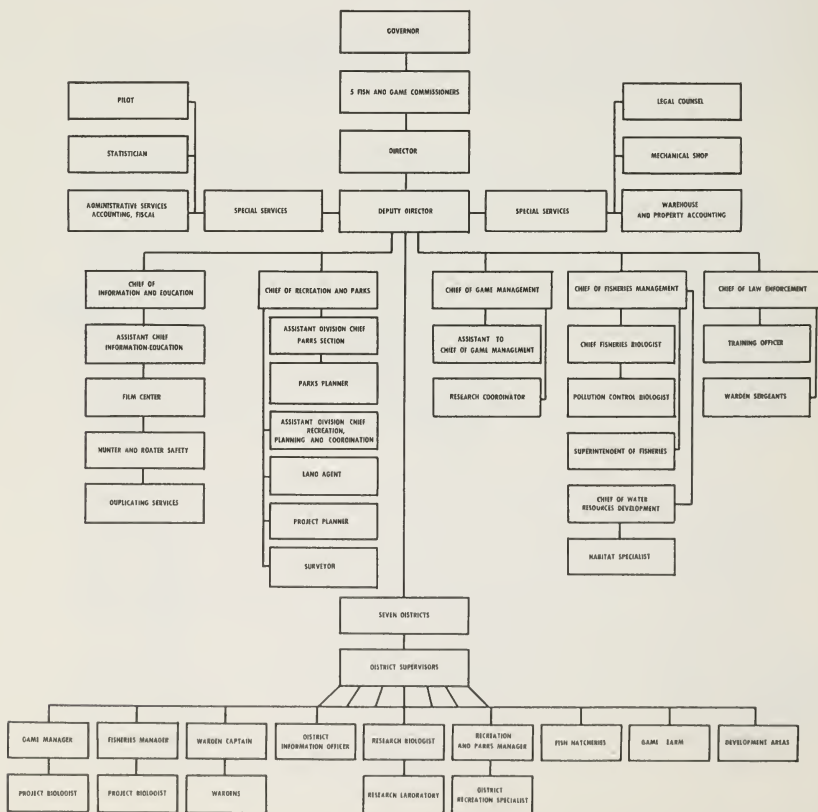
Each district supervisor has day to day supervision of all persons assigned to his district and is responsible to the department director or, in his absence, the deputy director.

Division chiefs compose the director's staff. The staff plans, coordinates, and budgets for various activities of the department under direct

supervision of the director. District supervisory personnel see that programs planned by the staff and approved by the director are carried out.

The main source of income to the Fish and Game Department is from the sale of hunting and fishing licenses. A second major source of income is from federal excise taxes on sports firearms, ammunition, and fishing equipment. These funds, known as Pittman-Robertson and Dingell-Johnson funds, are allotted to various states primarily on basis of the size of the state and license sales in the state.

The only appropriation which comes from the state general fund is for state parks.



# FISHERIES MANAGEMENT



Many sensitive instruments are used in the science of fisheries management. The tape shown in actual size above is from an echo sounder. The echo sounder shows water depths, lake bottom configuration, and general configuration of other objects in the water. The heavy line at top represents Flathead Lake surface. The irregular heavy line at the bottom represents the lake bottom. Small dots in between are fish, and the dot cluster immediately above inset of Flathead work boat shows a school of fish.

The fishery management program was characterized during the biennium by efforts to preserve, protect and restore fish habitat, resulting in improving the quality and quantity of Montana's overall fishery. Application of research, intensified co-ordination with construction agencies under the Stream Preservation Act and initiating closer co-ordination with agencies and individuals not covered by the Act were among techniques used to improve Montana's position as the number one trout fishing state in the nation.

## Bluewater & Rock Creek Study

Stream fishing in Montana is predominantly the result of production of wild trout, which require quality water for continued production. Studies of Bluewater Creek near Fromberg and Rock Creek near Red Lodge demonstrate the detrimental effects of silt and sedimentation on trout survival. It was found that a great deal of these streams' silt burden was caused from man-made reasons, and when the erosion-siltation sources were rectified to alleviate siltation there was an accompanying and proportional increase in wild trout. The studies are continuing to analyze sources and control of soil erosion and stream bank breakdown. The information obtained will greatly benefit fish habitat and the streams carrying capacity for fish, and be of value to property owners in terms of channel stability and soil retention.

## River Electrofishing Project

Big rivers, like the Madison, Missouri, Jefferson, Yellowstone and Big Hole are very popular with Montana anglers and are a major tourist attraction in Montana. Because of their size, it has been previously impossible to sample and research them as smaller streams can be handled. Research technique breakthroughs now make possible the gathering of adequate and accurate information to manage these large rivers in a manner to enhance and sustain this already tremendous fishery resource. During the past two years, surveys have been made on the East Gallatin, Madison, Beaverhead, Ruby and Shields Rivers, and O'Dell, Rocky and Prickly Pear Creeks, and started on the West Gallatin and Yellowstone Rivers. Information to date reveals large rivers have a tremendous annual turnover of game fish, just as small creeks do, little of which is due to fishing pressure. The Madison, heavily fished by Montana standards, has been discovered to lose only 12% of its annual fish mortality to anglers. From this type of information it can be readily calculated just how much fishing a large river can provide and what sort of regulations are needed, if any, to insure the potential is not exceeded.

## Flathead Lake Study

Flathead Lake, the largest fresh water lake west of the Mississippi, is among the very top fishing attractions in Montana. Fishery managers have

been getting a good look into this natural body of water by means of a special boat equipped with the gear necessary to probe all portions of the lake. The study includes all life in the water, most importantly the fish, and from the microscopic free-floating plankton through the worms and insects that live in the bottom mud. In Flathead Lake, many fish species lead complex lives. Some spend their entire lives in the lake. Others are born and spend their early lives in the more than 700 miles of streams of the upper tributaries and come down to the lake as adults, later returning to the tributaries to spawn. Determination of the fish distribution in the lake throughout the seasons is important so that all the factors necessary for perpetuation of the game species can be taken into account by fisheries managers. A very modern sounder that can detect fish as well as determine bottom contours has produced information of immediate use by anglers as well as long term scientific data. Accurate forecasts can be given of the most likely areas anglers will find cutthroat, kokanee, Dolly Varden or lake trout at various seasons. It has been discovered that Flathead has a good population of lake whitefish which anglers have seldom sought before. The information has been determined and made available to the fishing public that the kokanee is almost uniformly spread over the entire lake at depths of 50-70 feet during the summer months.

The answers which the Flathead Lake investigations will provide will be the keys to continued enhancement and utilization of the game species which must live in both the lake and the tributaries, especially in the light of dam proposals which if built would create additional barriers to spawning runs. The study may also reveal that additional game fish species might be introduced into Flathead which would be compatible with the existing life there and broaden the sport fishing base of the lake, such as the coho.

### Pollution Control

The State Department of Health administers the Montana Water Pollution Control Act. The Fish and Game Department's pollution control biologist is attached by cooperative agreement to the Department of Health to work with water pollution where fish and game resources are involved.

Considerable progress has been made in the control of water pollution by industries and municipalities. Sediment pollution from agricultural, construction and timber harvest remain a very serious problem.



A relatively new kind of pollution, thermal pollution, is growing to frightening proportions in some parts of the United States. Thermal pollution results when water is taken from a river or lake, used to cool generating plants or other industrial complexes and is then discharged much heated back to the parent water.

The Fish and Game Department's pollution control work had two major activities during the biennium. The first was working with the Water Pollution Control Council in the reclassification of Montana waters and establishment of water quality criteria to insure that the adopted criteria and standards would be adequate to preserve fish and wildlife values. Secondly, the pollution of the Clark Fork River required a major effort in monitoring water quality and associated investigations.

### Fort Peck Commercial Fisheries Investigations

A commercial fishery investigation of Fort Peck Reservoir was started during the biennium. Passage of the Commercial Fisheries and Development Act of 1964 (Public Law 88-309) allowed partial funding of this work by the U.S. Bureau of Commercial Fisheries. A 35-foot work boat, suitable for all weather operation on Montana's largest reservoir, was constructed and two permanent employees have been assigned to the investigation.

Goldeye, one of the most valuable commercial species in the reservoir, but quite undesirable to Montana anglers, had been passed up by commercial fishermen in the past because they were not able to capture these fish without also taking large numbers of game species. Thus, the first objective of the study was to find a way to take goldeye selectively. A technique was developed, using floating gill nets, fished away from shallow areas, that resulted in a catch over a six-months period that was 99.95 percent goldeye. With this technique, plus promotion by local business groups, a commercial fishery for goldeye was begun in 1967. About 50,000 pounds of Fort Peck goldeye were marketed in Winnipeg (North



Spray of fish is headed for a lake high in the mountains. Most of the areas that are difficult to reach by fisheries trucks are now stocked with fish from aircraft.

America's major goldeye market) in 1967 and a contract for 100,000 pounds is pending for 1968.

Other work of this study includes sampling for concentrations of commercially valuable species throughout the entire reservoir and marking northern pike to learn more about the migration patterns and abundance of this popular game fish. Although the northern pike cannot be taken commercially, a knowledge of his areas of concentration is important to commercial operators so they can avoid him.

### Summary

In terms of variety of game fish species, number of quality streams, rivers and lakes, and fisherman accessibility Montana has assumed the position of number one trout fishing state in the nation. This is particularly significant where wild trout are concerned. Montana has partly come into this position due to research and application preserving fisheries values, and legal means necessary to maintain the resources. Montana has also reached this position due to former excellent fish producing states falling behind in the crush of competition for land and water uses which result in massive pollution and fish habitat destruction. The pressure grows in direct proportion to population increases and the complexity of resolving more and more conflicts of interests over Montana water and watersheds. Montana Fish and Game Department programs aim at perpetuating and enhancing habitat values beneficial to fish and the wise utilization of this important resource in the face of whatever the future may have to offer.

### Fish Hatcheries

Montana fish hatcheries have continued to emphasize quality in the overall fish cultural program; at the same time maintaining sufficient production to meet all of the plants requested by fish managers throughout the state. Improvements in fish diets and fish treatments have resulted in fast growing trout with relatively low mortalities. Fish transportation has improved also. New fiberglass distribution tanks at several of the hatcheries make it possible to transport fish practically across the state with negligible losses.

At the department's oldest fish hatchery in Anaconda, new concrete tanks were constructed in the hatchery building. These tanks replace troughs which had been in use since 1908. The new tanks have greatly increased the efficiency of the Anaconda hatchery in producing fish of the proper size at the proper time for planting.

At the Bluewater Hatchery near Bridger, trout have been hatched in boxes in the large 10-by-100-foot race-ways—an inconvenient operation. A new hatchery building is being constructed at Bluewater where the eggs can be hatched under much better controlled conditions.

A great deal of assistance in disease investigations and treatments has been received from the Federal Hatchery Development Center located at Bozeman. Personnel at the center, trained in fish pathology, have been most cooperative in checking on problems at any of the state hatcheries. In addition, national fish hatcheries at Ennis, Creston, and Miles City play an important part in the stocking of fish in state waters.



Water development projects present problems to resource management agencies. This mud flat is of no value to fish, wildlife or recreation in its present condition.

### Water Resource Development

Water developments in Montana have been affecting our fish and wildlife resource in two basic ways. First, they consume land, frequently critical range areas, formerly used by a variety of wildlife. Secondly, they create an artificial aquatic environment that is not necessarily suited to Montana game fish species. Greatly increased activity in water resource planning and development in recent years necessitated creation of a water resource development section within the fisheries division.

Over the past two years this section has been participating in the development of two comprehensive river basin plans, one for the Missouri, one for the Columbia, and has worked with constructing agencies and the Fish and Wildlife Service on specific water development projects.

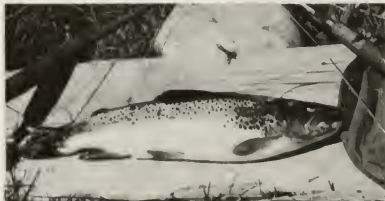
The Fish and Game Department has taken the position that since these development projects are federally financed, the financial responsibility for determining the effect on existing resources and ways to replace fish and wildlife habitat sacrificed lies with each individual project and should not be the responsibility of Montana's sportsmen. In order to accomplish the needed work, the Water Resource Development Section has prepared detailed study outlines and budgets for several projects and offered to perform the necessary work on a contract basis. These proposals are currently under study by various construction agencies. Should this concept and these proposals be accepted, it will be a first step toward constructing

multipurpose projects in fact, rather than just in name.

### Habitat Preservation and Improvement

During the biennium, the department received 93 legal notices of construction of projects affecting fishing waters. These notices to the Fish and Game Department are required by the Stream Preservation Act from most state, city and county agencies. Forty-nine of these projects were not harmful to fish habitat as planned. On the remaining 44 projects we made recommendations for certain changes to reduce or eliminate the fish habitat destruction they would have caused if constructed as originally planned. On some projects the department asked that road alignments be changed to avoid streams entirely, on others the department asked for additional bridges to preserve natural, meandering channels. On other projects where alignment changes or bridges were not feasible, the department recommended new meanders be built to replace those cut off in order that the total stream length would be the same after the project as before. Where channel changes have been unavoidable, the department has asked that new channels be excavated in the dry to minimize silt pollution. Preservation of streamside vegetation during construction has been asked and where this is not possible, that bare banks be revegetated as soon as possible. Apparently the requests for these special considerations have been reasonable for not one was denied. Thus, it has not been necessary to submit any project to the arbitration provided for in the act.

Through cooperative agreements, several federal agencies follow the intent of Montana's Stream Preservation Act. Some private individuals also seek advice on stream construction projects, although like the federal agencies, they do not come under the act. More inclusive legislation would be beneficial to Montana's stream fishery resource; however, the present act has allowed the department and the construction agencies involved to greatly reduce the stream habitat destruction that was occurring before 1963.



The goal of fisheries management is quality recreation.



## FISH PLANTED BY STATE & FEDERAL HATCHERIES

### State Fish Hatcheries

May 1, 1966—April 30, 1967

#### Rainbow Trout

1".....	515,000
2".....	424,873
3".....	1,888,034
4".....	993,084
5".....	301,605
6".....	40,107
7".....	271,957
8".....	474,780
9".....	141,400
10".....	71,184
11".....	34,560
12".....	5,500
14".....	1,526
<b>Total.....</b>	<b>5,163,610</b>

#### Cutthroat Trout

1".....	221,114
2".....	176,292
3".....	46,778
4".....	69,620
5".....	22,400
6".....	5,050
9".....	540
12".....	2,147
13".....	3,102
<b>Total.....</b>	<b>547,043</b>

#### Cutthroat Eyed Eggs.....

508,997

#### Brook Trout

3".....	50,764
4".....	504
5".....	21,410
6".....	1,860
<b>Total.....</b>	<b>74,538</b>

#### Lake Trout

10".....	1,800
11".....	1,800
01".....	80,960
<b>Total.....</b>	<b>84,560</b>

#### Kokanee

1".....	3,579,386
---------	-----------

#### Silver Salmon (Coho)

3".....	160,076
---------	---------

#### Grayling

1".....	590,000
2".....	32,760
4".....	17,000
5".....	10,000
15".....	251
<b>Total.....</b>	<b>650,011</b>

### State Hatcheries

May 1, 1967—April 30, 1968

#### Rainbow Trout

1".....	29,393
2".....	949,564
3".....	2,682,385
4".....	725,337
5".....	334,219

6".....	25,756
7".....	180,744
8".....	226,148
9".....	349,800
10".....	181,100
11".....	9,984
12".....	8,210
<b>Total.....</b>	<b>5,702,640</b>

#### Cutthroat Trout

1".....	543,755
2".....	188,865
3".....	34,500
4".....	13,908
5".....	10,404
6".....	1,000
7".....	850
9".....	5,352
12".....	3,896
18".....	300
20".....	900
24".....	182
<b>Total.....</b>	<b>803,912</b>

#### Eyed eggs.....

707,652

#### Brook Trout

2".....	48,536
3".....	12,229
4".....	7,970
5".....	11,100
<b>Total.....</b>	<b>79,835</b>

#### Kokanee

1".....	7,195,890
---------	-----------

#### Silver Salmon (Coho)

3".....	159,745
---------	---------

#### Grayling

3".....	61,189
---------	--------

#### Largemouth Bass

5".....	600
8".....	25
<b>Total.....</b>	<b>625</b>

#### Yellow Perch

5".....	25
6".....	20
<b>Total.....</b>	<b>45</b>

14".....	150
16".....	2,320
17".....	7,273
22".....	963
<b>Total.....</b>	<b>1,951,388</b>

#### Cutthroat Trout

6".....	111,237
7".....	39,808
<b>Total.....</b>	<b>151,045</b>

#### Brook Trout

1".....	12,512
2".....	104,137
<b>Total.....</b>	<b>116,649</b>

#### Lake Trout

2".....	389,290
---------	---------

#### Grayling

1".....	9,159
2".....	41,000
11".....	2,247
<b>Total.....</b>	<b>52,406</b>

#### Largemouth Bass

1".....	200
2".....	40,050
3".....	25,500
23".....	35,901
<b>Total.....</b>	<b>101,651</b>

#### Bluegill

1".....	12,000
---------	--------

#### Walleye Pike

1".....	4,024,500
---------	-----------

#### Northern Pike

1".....	116,400
2".....	272,000
<b>Total.....</b>	<b>388,400</b>

#### Channel Catfish

1".....	500
2".....	82,784
<b>Total.....</b>	<b>83,284</b>

#### Minnows

1".....	1,750
---------	-------

### Federal Hatcheries

May 1, 1967—April 30, 1968

#### Rainbow Trout

2".....	46,150
3".....	53,500
4".....	74,583
5".....	112,663
6".....	314,302
7".....	48,756
8".....	378,398
9".....	106,875
10".....	223,436
11".....	79,471
12".....	2,880
16".....	1,979
<b>Total.....</b>	<b>1,442,993</b>

### Federal Hatcheries May 1, 1966—April 30, 1967

#### Rainbow Trout

2".....	12,750
3".....	39,000
4".....	604,491
5".....	341,501
6".....	250,753
7".....	9,523
8".....	326,672
9".....	80,628
10".....	109,428
11".....	117,667
12".....	44,529
13".....	3,740

**Federal Hatcheries  
(Continued)**

<b>Cutthroat Trout</b>		<b>Largemouth Bass</b>		<b>Channel Catfish</b>	
5".....	275,924	2".....	265,578	2".....	103,240
16".....	493	10".....	64	<b>Minnows</b>	
<b>Total.....</b>	<b>276,417</b>	<b>Total.....</b>	<b>265,642</b>	1".....	68,500
<b>Lake Trout</b>		<b>Bluegill</b>		<b>Crappie</b>	
2".....	243,680	1".....	21,392	7".....	600
<b>Grayling</b>		<b>Walleye Pike</b>		8".....	15
6".....	4,538	1".....	881,400	12".....	60
7".....	7,690	<b>Northern Pike</b>		<b>Total.....</b>	<b>675</b>
12".....	120	1".....	106,000	<b>Channel Catfish</b>	
<b>Total.....</b>	<b>12,348</b>	2".....	3,600	20".....	200
		<b>Total.....</b>	<b>109,600</b>	<b>Shiner Minnow</b>	
				3".....	2,500

**SUMMARY OF COMMERCIAL FISH CATCH**

**May 1, 1966—April 30, 1967  
691,753 pounds**

<b>Lake Helena</b>		<b>Nelson Reservoir</b>		<b>Fort Peck Reservoir</b>	
Carp.....	170,260	Buffalo.....	46,100	Buffalo.....	259,765
Suckers.....	4,750	White Carp (carpsucker).....	9,800	White Carp (carpsucker).....	32,100
<b>Total.....</b>	<b>175,010</b>	Carp.....	267,550	Drum.....	3,210
		Suckers.....	300	Catfish.....	7,653
		Goldeye.....	18,650	Goldeye.....	46,956
		<b>Total.....</b>	<b>342,400</b>	Ling.....	170
				<b>Total.....</b>	<b>349,854</b>
<b>Fort Peck Res.</b>				<b>Nelson Reservoir</b>	
Buffalo.....	150,370			Buffalo.....	2,850
White Carp (carpsucker).....	12,800			White Carp (carpsucker).....	2,700
Drum.....	1,325			Carp.....	69,200
Catfish.....	6,748			Suckers.....	585
Carp.....	3,100			Goldeye.....	15,900
<b>Total.....</b>	<b>174,343</b>			<b>Total.....</b>	<b>91,235</b>

**May 1, 1967—April 30, 1968  
1,275,414 pounds**

<b>Lake Helena</b>	
Carp.....	823,975
Suckers.....	10,350
<b>Total.....</b>	<b>834,325</b>



Plying out the net for a commercial carp fishing operation on Lake Helena near Helena, Montana. Long distances and vagaries of markets make inland fishing difficult. Few western states have more than two or three commercial fishermen on inland waters.

## GAME MANAGEMENT



The goal of game management is quality recreation.

Photo by Garry Atwell.

### Big Game

The number of big game animals taken by hunters in Montana increased in 1966 over the previous year. The new more expensive license structure, which discouraged the taking of second deer, combined with more conservative hunting regulations to reduce the hunter take in 1967, although hunter success was a high 77%. The near overabundance of deer in many hunting areas warrant some adjustment in licensing structure so more hunter effort toward taking second deer in those areas could be accomplished.

Spectacular antelope fawn production over the biennium is rapidly countering the effects of the severe winter of 64-65. Reduced quotas have been held to for northeastern and southeastern Montana allowing the base herds to increase back to maximum allowable sizes, at which time the excellent production will be reflected in considerably higher hunter quotas.

Montana continues to maintain high bighorn sheep hunting opportunity. The combination of high hunter success and trapping is keeping the Sun River sheep herd productive but barely within what its winter range will stand. The Rock Creek bighorn population in Granite County is a current problem, with lack of winter range, parasites and disease causing high mortalities.

The elk harvest rose from 12,450 in 1966 to 14,500 in 1967 in spite of relatively mild fall weather. More intensive management of specific areas is providing increased hunting opportunity. A five-year study of the Sun River elk indicates that the Sun River Game Preserve is a hindrance to raising the productivity of that herd. The Gallatin portion of the Northern Yellowstone elk, historically a trouble spot, requires close continuous attention as weather plays such a crucial and unpredictable part in the proper harvest. The special late seasons have accomplished much toward adequate management of these elk and making more elk hunting available.

### Upland Game Birds

The mountain grouse population and harvest showed good stability during the biennium. The production and harvest of pheasants, sharptail, sage hens and Hungarian partridge was quite high in 1966. The exceptionally long, snowy, wet spring of 1967 made conditions unfavorable for game bird production, which was reflected in the 1967 harvest of those species. The fairly mild spring of

1968 was conducive to increased production of upland birds and probable increased harvest.

#### Waterfowl

The waterfowl harvest was maintained at a high level. In excess of 200,000 ducks and 11,000 Canada geese were harvested in the state. The Pacific Flyway contributed most of the harvest. Solid research provided the key to establishing an annual post-season hunt for drake mallards in the Central Flyway portion of Montana, which significantly increases the hunting opportunity for Eastern Montana.

#### Research in Montana Game Management

Game research is being conducted in three major fields:

**Big game** research has involved study of food and range requirements of deer, elk, antelope, moose and bighorn sheep. These studies have included, in pertinent areas, forage relationships with livestock. Intensive studies of the seasonal movements, harvest and productivity of segments of the Sun River elk herd and investigations of the productivity of Northern Yellowstone elk have resulted in important findings assisting beneficial management of these nationally-known herds. These findings have useful application as well to even more comprehensive management of Montana's big game and its habitat state-wide.

**Small game** research examines the habits, habitat requirements, life history, harvest effects, land use and other factors concerning blue and sharp-tail grouse, enabling the perpetuation and best utilization of these popular native grouse resources.

**Pesticide-wildlife** research details the effects of insecticides and herbicides on game birds and animals. Forest grouse-DDT studies contributed to

discontinuance of use of persistent-pesticides on public forests. Effects of sagebrush removal on antelope and sage grouse habitat and related plant, animal and insect life are being evaluated in central Montana in a co-operative long-term study by the Montana Fish and Game and the Bureau of Land Management. Already providing knowledge with immediate application, the final results of this study will be very important in future public land management decisions concerning the various uses of sagebrush-grasslands for optimum public benefits. Game research projects are carried out by a small efficient research staff. University System personnel and facilities are utilized for certain research phases.

#### Game Management Problems

The process of adjusting big game animal numbers to their winter forage supply is continuous and there are still deer and elk problem areas in Montana. The rapid changes of habitat for other primary uses is a constant threat to big game and small game species. The influence of the department on landowners and land managers is necessarily one of persuasion backed by solid, reliable research on the effects of different land use management and techniques on wildlife. Competition for land and water use is becoming so severe that research requirements which must be met grow directly in proportion.

Hunter access is an item of growing importance lest lack of it become a major problem. Although a considerable amount of Montana is public land, a majority or substantial amount of the hunting takes place on private land. Since fish and game wildlife management areas account for only 6/1000 of 1 percent of Montana's land, they will never be able to provide sufficient open hunting territory. Intensification of present programs to maintain lands open to public hunting is necessary.



The total effects of sagebrush removal are being cooperatively studied by the Montana Fish and Game Department and the Bureau of Land Management. The helicopter is spraying sagebrush.

## Summary

Despite the diversity of climate, geology, population and weather to be expected in a land area as large as Montana, the overall game bird and animal resource stands in condition to support heavy utilization for outdoor recreation hunting

opportunity on a sustained basis. As population pressures mount steadily on all natural resources, maintaining the wise use of renewable resources such as game must become more complex and at times controversial as even more widespread conflicts of interests must be resolved.

## MONTANA BIG GAME HARVEST, 1963-1967

Year		Elk	Deer	Moose	Sheep		Goat		Antelope	Bear
					Limited	Un-limited	Limited	Un-limited		
1963	No. Hunters .....	66,622	124,831	783	72	400	420	878	27,907	28,010
	No. Killed .....	11,050	119,300	587	46	36	217	296	22,238	1,121
	Percent Success .....	17	96	75	64	9	52	34	80	4
	Licenses Issued .....			821	80	518	493	1,098	31,346	
1964	No. Hunters .....	56,904	113,990	674	70	277	443	843	33,954	9,737
	No. Killed .....	11,247	107,366	476	43	24	245	184	26,982	1,655
	Percent Success .....	20	94	71	6	9	55	22	83	17
	Licenses Issued .....			703	78	399	518	1,003	37,123	
1965	No. Hunters .....	42,350	109,828	669	78	189	536	605	25,417	7,960
	No. Killed .....	7,657	90,141	439	52	26	230	112	18,630	1,109
	Percent Success .....	18	82	66	67	14	43	18	73	14
	Licenses Issued .....			688	83	242	637	814	27,886	
1966	No. Hunters .....	55,113	106,180	666	74	281	459	836	19,556	9,760
	No. Killed .....	13,400	98,100	510	44	32	225	250	13,865	2,000
	Percent Success .....	23	92	74	59	11	49	30	71	21
	Licenses Issued .....	100,508	140,511	703	82	570	548	1,124	21,638	
1967	No. Hunters .....	71,883	115,185	616	78	145	589	256	18,052	10,571
	No. Killed .....	14,500	88,640	433	56	12	294	90	12,599	2,130
	Percent Success .....	21	77	70	73	8	50	35	70	20
	Licenses Issued .....	82,882	151,131	631	80	193	681	300	19,933	



Unit workers recording measurements of the grizzly bear and preparing to instrument it with a radio transmitter.

## Cooperative Wildlife Research Unit

The Montana Cooperative Wildlife Research Unit was established at the University of Montana on February 8, 1950. It is operated through a coordinating committee with representatives for the State Fish and Game Department, University of Montana, U.S. Fish and Wildlife Service, and Wildlife Management Institute. The unit's objectives are to provide professional training in wildlife research and related fields, to demonstrate the findings of this research through extension work and practical game management, and to disseminate research findings by means of publications and extension activity.

### Research Projects

The following research projects were in progress during the biennium:

1. Aging of fishers and analysis of reproductive systems.
2. An ecological study of the grizzly bear.

3. An intensive study of elk behavior on the Mirror Plateau summer range, Yellowstone National Park.
4. A preliminary study of the breeding biology of the spruce grouse (*Canachites canadensis franklinii*) in northwestern Montana.
5. Bighorn sheep population study, Wildhorse Island.
6. Competition between big game and cattle in the Gird Creek Area of Montana.
7. Development of the pronghorn antelope fawn.
8. Ecology of the golden eagle.
9. Elk migration study, Yellowstone National Park.
10. Factors limiting a Montana population of Rocky Mountain bighorn sheep.
11. Magpie population dynamics.
12. Nesting raptor pesticide relations.
13. Population study of Canada geese in the Flathead Valley.
14. Quantitative aspects of raptor predation.
15. Radiotracking and telemetering system for large western mammals.
16. Rattlesnake Creek mule deer winter range study.
17. River classification and evaluation.
18. Seasonal condition of mule deer.
19. Study of alpine ecology in the northern Rocky Mountains.
20. Study of phenomena related to reproduction in the pronghorn.
21. Systematics of blue grouse in northwestern Montana.

Completed projects have been reported on in journals or theses, and in addition, segments of some continuing projects have been published.

**Rabies control program** Wildlife rabies in Montana has most commonly been confirmed in skunks. The most effective action to minimize rabies, recommended by the Governor's Advisory Committee on Rabies Control, has been found to be intensive effort directed at limited areas and/or breeding populations in up to a three mile zone around detected rabies cases to afford maximum isolation. There is no evidence to support general skunk suppression programs in non-infected areas.

The Legislature appropriated \$25,000 for the rabies control and suppression program for the 1967-68 biennium to the Livestock Sanitary Board and the program was directed to the Montana Fish and Game Department by Executive Order. The Montana Fish and Game Commission has designated \$10,000 of the \$40,000 annually appropriated for predator control to be utilized for rabies work with the approval of the Director or his agent.

## POSITIVE SKUNK RABIES, 1964 THROUGH 1968

Name	City or Town	County	Veterinarian or Physician Reporting	Specie	Date Specimen Forwarded to Diag. Lab.	Diag. Lab. Accession Number
Medicine Rocks Ranch	Willard	Fallon	Aby, DVM	Skunk	4-21-64	6-136
Mrs. Jessie Steig	Plevna	Fallon	Flora, DVM	Skunk	4-22-64	4-140
Harry Turbeville	Marmouth, N. D.	— — —	Flora, DVM	Skunk	7- 6-64	6-243
Cleo Buckley	Baker	Fallon	Stoddard, DVM	Skunk	11-12-64	6-396
Owen M. Steig	Ekalaka	Carter	Flora, DVM	Skunk	12-14-64	6-427
Joe Kartum	Ekalaka	Carter	Stoddard, DVM	Skunk	1-11-65	6-11
Martin O'Connor	Baker	Fallon	Stoddard, DVM	Skunk	1-21-65	6-24
Aleta Herigstad	Hodges	Dawson	Dyckman, DVM	Skunk	12-20-65	6-413
Nick Pankrantz	Larson	Valley	Connel, DVM	Skunk	1-11-66	6-3
Max Hickman	Glendive	Dawson	Dyckman, DVM	Skunk	2- 1-66	6-31
G. Miner	Richland	Valley	Newman, DVM	Skunk	2- 4-66	6-36
Warrvick	Wolf Point	Roosevelt	Hobson, DVM	Skunk	2-25-66	6-61
E. Petty	Plevna	Fallon	Stoddard, DVM	Skunk	3-22-66	6-110
Sheriff's Dept.	Baker	Fallon	Stoddard, DVM	Skunk	3-30-66	6-124
Herb Schell	Plevna	Fallon	Stoddard, DVM	Skunk	4-12-66	6-149
Christ Lang	Baker	Fallon	Stoddard, DVM	Skunk	4-12-66	6-143
Fallon County	Plevna	Fallon	Stoddard, DVM	Skunk	4-15-66	6-157
Thieland Ranch	Plevna	Fallon	Stoddard, DVM	Skunk	4-15-66	6-158
Bud Moulett	Ekalaka	Carter	Stoddard, DVM	Skunk (2)	4-18-66	6-159
Jake Shultz	Larson	Valley	Dyckman, DVM	Skunk	5-18-66	
Leonard Roberts	Boyes	Powder River		Skunk	4-26-66	
Chris Rasmuessen	Dagmar	Sheridan	Stokke, DVM	Skunk	5-22-67	6-122
H. J. Hort	Medicine Lake	Sheridan	Stokke, DVM	Skunk	6-26-67	6-174
Lester Anderson	Dagmar	Sheridan	Stokke, DVM	Skunk	8- 5-67	6-273
Elmer Espen	Comertown	Sheridan	Stokke, DVM	Skunk	5-15-68	6-150
Bernard Wolff	Froid	Roosevelt	Bell, DVM	Skunk	5-23-68	6-156
Lionel Flynn	Oswego	Valley	Hopson, DVM	Skunk	6-11-68	6-181
Jofe Flynn	Oswego	Valley	Hopson, DVM	Skunk	6-13-68	6-190
Joe Wienberg	Hardin	Big Horn	McCleary, DVM	Skunk	6-14-68	6-192
Carl Welzenbach	Wolf Point	Roosevelt	Hopson, DVM	Skunk	6-23-68	6-218

There are no "dull moments" for the enforcement officer. Warden Kent of Helena prepares to haul in supplies for fencing elk out of haystacks. An inverted automobile hood was discovered to make a good sled.



## LAW ENFORCEMENT

The need of enforcement for protection of Montana's fish, wildlife and recreational resources is continually growing. More people with an increasing amount of leisure time seek relaxation and recreation in Montana's great outdoors. Guidance of the public to a wise use of this resource is a basic responsibility of the law enforcement division. The law enforcement staff has been expanded to keep pace with the increased use.

A rather recent innovation to the enforcement program is the use of warden sergeants for special investigation programs. During peak periods such as season openings and special seasons, when the pressure is unusually heavy at given locations, warden sergeants are shifted to these areas to help meet the situation.

Montan maintains about 55 wardens to patrol over 147,000 square miles. Many of these miles are rugged back-country and wilderness areas. It is practically impossible for a regular warden to maintain a thorough coverage of his area, keep current in his other duties and still be able to investigate special enforcement problems that crop up from time to time. Also, the local warden often is limited in his operation because of his familiarity to poachers, lack of time for continuous investigation and surveillance and other duties that keep him busy. Many of these special problems require a man in plain clothes and an unfamiliar

face to bring about a prosecution. This is one of the duties where the special investigation program has proven very successful.

The higher court's recent decisions demand a new and professional approach to law enforcement. The Fish and Game training program has been expanded and intensified to meet this demand. Personnel qualifications are being upgraded. New and improved equipment and techniques are being used.

There were 4,622 arrests for violations of Montana Fish and Game laws during the past biennium. This is a significant increase over the preceding biennium of 39%. The increase reflects increased public use, expanded enforcement duties in water safety and better law enforcement. It also reflects a more efficient and better trained enforcement staff.

Landowner-sportsmen relationships continue to be of concern. More private land is closed to public recreational use each year. The enforcement staff has made a concerted effort to assist both landowners and sportsmen in fostering a better understanding and promoting reasonable public recreational use of private land. The enforcement of laws for better control of private land abuse has been helpful. Landowners have been urged to open their private property to reasonable public use.

Wildlife and wildlife habitat protection are prime objectives of a sound enforcement program.

## FISH & GAME VIOLATIONS

	May 1, 1966 through April 30, 1967	May 1, 1967 through April 30, 1968
<b>Fish and game Violations by Type of Violation</b>		
Big Game .....	705	779
Game Birds and Migratory Waterfowl .....	190	184
Fish .....	760	817
Fur Bearers .....	12	15
Water Safety .....	182	237
Shooting Safety .....	65	39
Miscellaneous .....	253	384
Total .....	2,167	2,455

	May 1, 1966 through April 30, 1967	May 1, 1967 through April 30, 1968
<b>Fish and Game Violations by Supervisor Districts</b>		
District No. 1 .....	191	257
District No. 2 .....	563	464
District No. 3 .....	480	532
District No. 4 .....	371	520
District No. 5 .....	202	345
District No. 6 .....	203	224
District No. 7 .....	157	113
Total .....	2,167	2,455

<b>Fish and Game Fines by Type of Violation</b>		
Big Game .....	\$25,593.80	\$29,865.90
Game Birds and Migratory Waterfowl .....	3,703.00	3,459.50
Fish .....	15,361.45	15,688.05
Fur Bearers .....	517.00	227.50
Water Safety .....	1,706.25	2,157.10
Shooting Safety .....	1,055.00	694.00
Miscellaneous .....	6,359.85	9,791.66
Total .....	\$54,296.35	\$61,883.71



All in a day's work. Warden Kent removes a "road kill."





As cities become larger and more hostile, the desire of people to get away from it all for a while becomes more impelling. There must be places provided for these recreationists. Quality recreation areas such as this one on Canyon Ferry Reservoir are literally becoming worth their weight in gold.

## RECREATION AND PARKS

The increased national interest in outdoor recreation has been reflected in an accelerated recreation and parks program in Montana. New areas have been added and planning and construction projects are going ahead in the existing areas. Long range plans have been developed for many of the areas in preparation for the construction phase of the program as funds permit. A comprehensive Statewide Outdoor Recreation Plan, completed three years ago and more recently updated, has provided important overall guide lines for this work.

In cooperation with the Bureau of Outdoor Recreation and with matching funds provided by the Land and Water Conservation Act, it has been possible to accelerate the entire program from the local to the state level. Matching funds have been available to acquire and develop outdoor recreation areas by local and state agencies. Over four and one-half million dollars have been invested in this program during its four year life and the results are evident in areas and structures throughout the state ranging from city swimming pools and playfields to state parks.

### State Parks, Monuments and Recreation Areas

The total number of areas in these categories has increased from 30 to 39 during the biennium. These areas vary from some added to the system for protection such as the famed Citadel Rock on the Missouri River Recreational Waterway to an important archaeological site such as the Madison Buffalo Jump.

Development of primitive boat access camping areas along the Missouri River Recreational Waterway was initiated by the acquisition of five small key tracts. It is expected that minimum development of these areas can be accomplished early in the next biennium.

### Fishing Access Acquisition and Development

This is a continuing program. Several new areas were organized and development of the new and existing areas was carried on as fast as funds would permit. These access sites are designed to get the fisherman to prime fishing waters and in addition, the attempt is being made to provide camping and picnicking facilities wherever possible.



Camp Fortunate on Clark Canyon Reservoir is one of the many state provided water-based recreation areas. Immediately across the reservoir are facilities of the Beaverhead Camp Area. It was at this site where Lewis and Clark cached their dugouts in 1805 and headed overland by horseback.

Recreational areas and access points are being provided along our unique and valuable river waterways. Recreationists who float the nation's last wild stretch of the Missouri River, Montana's famed Missouri River recreational waterway, will see many historic and lovely sites such as Citadel Rock which stands like a great fortress above the river.



This is a particularly popular program with the sportsmen and landowners as it provides legal access for the recreationist and has gone a long way toward solving serious trespass problems.

#### Land Acquisition

Efforts in this program during the biennium have emphasized the purchase of lands desirable for water oriented recreation. Prices for this type of property are accelerating at a rapid rate. It is felt that important areas for this purpose should be acquired as rapidly as possible even though development may have to wait for some time.

Careful planning is required to assure the greatest benefit to the recreationist from available funds. Close cooperation with federal and other state agencies makes it possible to gain administrative control over certain areas without necessitating acquisition by fee title. Donations and gifts of land by individuals have also been helpful.

Fee titles were acquired to 840 acres of land at

nine sites by purchase and several sites were acquired by exchange of land deemed surplus. Payments in lieu of taxes are made on most of the land owned and like other landowners, this cost is continuing upward.

The Legislature will be requested to approve additional funds for land acquisition and in turn to clarify the procedures for disposition of surplus portions of state parks.

#### Preservation of Historic Sites

National legislation (a National Act for the Preservation of Historic Sites-Public Law 89-665) followed by appropriate state level action gave the responsibility for administration of this program to the Recreation and Parks Division of the department. This is a Grant-In-Aid program and will require an appropriation of state funds for its implementation. This program can be extremely important in the preservation of Montana's historic past.



All avenues of communications are utilized in the Fish and Game Department's Information-Education program. Film center technicians shoot final footage while preparing a fish and game film.

## INFORMATION-EDUCATION DIVISION

Montanans have characteristically been an outdoor people, and outdoors to a large percentage of them is synonymous with hunting and fishing. Probably no other resource or activity in Montana is subject to as much controversy as is game, its management and regulation. The controversy is not limited to hunters, but embraces landowners who may or may not hunt, other state and federal resource agencies, nature lovers, anti-gun elements, pro-gun elements, guides and outfitters, sports dealers and nearly every other segment of our citizenry. The management of game and regulation of its hunting affects so many people in so many ways that controversy, often heated, is chronic and inevitable. Sound information, however, can help to keep these controversies constructive rather than destructive.

Each week there are hundreds of inquiries for

specific information made to the Fish and Game Department. Many of these inquiries can be answered with prepared literature, but special letters are prepared for those which cannot. In addition, a monthly publication, "Montana Outdoors" is distributed to sports groups, legislators, schools and to other Montanans who request it. The magazine "Montana Wildlife" is published on an irregular schedule as time permits its preparation.

On most Fridays almost 800 news releases are mailed to newspapers, TV and radio stations, sportswriters, legislators, county attorneys, and other important sources. The Friday release date has been chosen as it comes the nearest to satisfying both daily and weekly papers. Feature stories are prepared also, assistance is given to national sportswriters, and to editors working on

special features. District information officers are also providing these services on a district basis.

A major effort has been made to get television and radio time as well as viewing audiences for film. Most district I & E officers have regular radio or television programs, or programs for both. Film center space was enlarged over the biennium.

Major films made include: Yellowstone Recreational Waterway, Float the Yellowstone, Missouri River Recreations Waterway, The Sun River, Fish Hatcheries Today, Montana Big Game\*, Antelope Hunt\*(hunter safety), Hunting the Whitetail\*, Montana Elk\*, Prairie Grouse\*, and Outdoor Recreation\* (\*titles in Montana Outdoors TV series)

Films that will be made by Jan. 1, 1969 include: Sagebrush, Montana Game, Montana Fish, Montana Recreation, Inside the Sun, Flathead Recreational Waterway. The loan library averages 50 titles on hand and are used by civic, sporting, church, educational and other groups, and are shown to an audience of 30,000 each year, averaging 24 people per showing

Spots for radio and television are produced on a continuous seasonal basis in the areas of hunter safety, special permit deadline reminders, National

Wildlife Week, Conservation Week, landowner-recreationist relations and other things to keep updating information to the public.

Approximately 150 five-to-ten minute radio programs on a multiplicity of subjects have been made and distributed to a minimum of 24 Montana radio stations.

The hunter safety program, administered by the department and taught by volunteer instructors, has brought instruction in safe handling of firearms to over 76,000 students. Each year an award for the program has been won, and during 1967 a first place award was presented to the Montana Fish & Game Department for outstanding contribution in the field of hunter safety. The award was given by the National Rifle Association and competition was among most states and Canadian provinces.

During the biennium also there was a rigorous program for schools and for organized youth groups.

The "3-C program", a landowner-recreationist oriented program, has been instigated in all areas of the state. The program's theme is consideration, cooperation, and common sense. Its aim is to promote better landowner-recreationist relations. Eight dollars of the twenty-dollar Sportsmen's License is earmarked for this program.



The I and E men's job is not one entirely of communications. Here District 2 Information Officer, Keith Seeburg, pumps stomach contents from a trout while helping investigate suspected stream pollution.

# FINANCIAL REPORT

## MONTANA HUNTING AND FISHING LICENSE SALES

### 1956 through 1967

LICENSE	1956	1957	1958	1959	1960	1961	1962	1963	1964	1965	1966	1967
Resident Fishing.....	191,081	188,048	187,949	185,727	186,969	185,719	188,898	195,847	111,268	113,500	119,740	119,983
Resident Bird.....	---	---	---	---	---	---	---	---	104,653	98,590	101,525	41,456
Resident Fishing-Bird.....	---	---	---	---	---	---	---	---	34,811	38,165	39,706	15,077
Resident Bird-Youth.....	---	---	---	---	---	---	---	---	---	---	---	4,808
Non-Resident Limited Fishing.....	41,328	41,869	40,933	40,522	39,252	41,589	48,714	53,896	51,263	54,585	61,679	51,060
Non-Resident Season Fishing.....	5,090	5,705	5,859	5,801	5,562	5,668	6,537	7,102	7,157	7,648	8,489	6,961
Non-Resident Bird.....	268	277	309	333	327	306	283	382	449	433	433	572
Resident Big Game.....	121,026	118,235	121,019	118,649	120,040	121,629	122,659	122,291	---	---	---	---
Elk-Adult.....	---	---	---	---	---	---	---	---	3,960	3,152	5,450	9,035
Deer A-Adult.....	---	---	---	---	---	---	---	---	12,979	13,268	14,864	46,990
Elk-Deer A-Adult.....	---	---	---	---	---	---	---	---	29,171	25,265	33,786	57,392
Elk-Youth.....	---	---	---	---	---	---	---	---	---	---	---	477
Deer A-Youth.....	---	---	---	---	---	---	---	---	---	---	---	4,986
Elk-Deer A-Youth.....	---	---	---	---	---	---	---	---	---	---	---	3,783
Deer B-Adult.....	---	---	---	---	---	---	---	---	2,789	3,049	2,528	16,871
Deer B-Youth.....	---	---	---	---	---	---	---	---	---	---	---	1,475
Elk, Deer A and B.....	---	---	---	---	---	---	---	---	52,731	55,294	51,621	---
Elk, Deer B.....	---	---	---	---	---	---	---	---	309	435	383	---
Deer A and B.....	---	---	---	---	---	---	---	---	23,184	23,961	22,033	---
Resident Combination.....	2,974	3,774	3,923	4,088	4,279	4,541	5,537	7,183	8,114	7,615	9,268	4,232
Non-Resident Big Game.....	269	195	302	327	413	380	456	518	495	551	570	205
Resident Mountain Sheep.....	851	1,070	1,398	1,203	1,217	1,138	1,358	1,640	1,664	1,667	1,948	709
Resident Turkey*.....	---	---	---	814	1,144	1,466	1,573	2,510	2,913	2,812	2,960	1,377
Resident Grizzly.....	---	---	---	---	---	---	---	---	---	---	---	1,022
Resident Sportsman.....	---	---	---	---	---	---	---	---	---	---	---	472
Grizzly Trophy.....	---	---	---	---	---	---	---	---	---	---	---	24
Non-Resident Mountain Sheep.....	6,445	5,038	7,533	9,291	12,042	13,427	15,228	10,505	10,558	9,631	6,028	4,439
Non-Resident Mountain Goat.....	---	---	---	---	---	---	---	---	---	---	---	285
Non-Resident Turkey.....	---	---	---	---	---	---	---	---	---	---	---	80
Non-Resident Grizzly.....	---	---	---	---	---	---	---	---	---	---	---	143
Bow and Arrow.....	1,453	1,929	2,413	2,753	2,355	2,196	2,193	2,270	2,305	2,373	2,668	2,129
Non-Resident Bear.....	---	---	---	---	---	86	107	---	---	45	64	36
Resident Antelope*.....	---	---	---	---	---	---	---	---	32,086	25,703	20,010	16,601
Non-Resident Antelope.....	---	---	---	---	---	---	---	---	702	687	703	1,500
Resident Moose*.....	405	411	572	505	553	633	836	819	702	687	703	598
Non-Resident Moose.....	---	---	---	---	---	---	---	---	---	---	---	34
Non-Resident \$35 Deer.....	6,445	5,038	7,533	9,291	12,042	13,427	15,228	10,505	10,558	9,631	6,028	4,439
Non-Resident \$35 Antelope.....	5,033	2,895	---	1,237	1,043	2,778	3,714	4,260	5,037	2,249	1,760	1,818
376,223	369,446	372,210	371,250	375,196	381,556	398,093	409,223	498,098	490,678	508,216	424,189	---

\*Both Res. and Non-Res. Licenses included in Res. Sales for years prior to 1967.

**MONTANA FISH AND GAME DEPARTMENT  
STATEMENT OF INCOME**

May 1, 1966—April 30, 1967

**Hunting and Fishing Licenses:**

Resident Fishing.....	119,740	@	\$ 3.00	\$ 359,220.00	
Non-Resident Limited Fishing.....	61,679	@	3.00	185,037.00	
Non-Resident Season Fishing.....	8,489	@	10.00	84,890.00	
Fishing-Bird Combination.....	39,706	@	5.00	198,530.00	
Non-Resident Bird.....	433	@	25.00	10,825.00	
Resident Bird.....	101,525	@	2.00	203,050.00	
Duplicate Fishing.....	2,958	@	1.00	2,958.00	
Elk Tag.....	5,450	@	1.00	5,450.00	
Deer A.....	14,864	@	1.00	14,864.00	
Deer B.....	2,528	@	1.00	2,528.00	
Elk, Deer A & B.....	51,621	@	3.00	154,863.00	
Elk, Deer A.....	33,786	@	2.00	67,572.00	
Elk Deer B.....	383	@	2.00	766.00	
Deer A and Deer B.....	22,033	@	2.00	44,066.00	
Duplicate Big Game.....	1,007	@	1.00	1,007.00	
Non-Resident Big Game.....	9,268	@	100.00	926,800.00	
Duplicate Non-Resident Big Game.....	39	@	1.00	39.00	
Non-Resident Bear.....	64	@	20.00	1,280.00	
Shipping Permit.....	131	@	.60	78.60	
Bow and Arrow.....	2,668	@	2.00	5,336.00	
Turkey.....	2,960	@	2.00	5,920.00	
Mountain Goat.....	1,948	@	5.00	9,740.00	
Mountain Sheep.....	570	@	15.00	8,550.00	
Non-Resident Deer.....	6,028	@	20.00	120,560.00	
Antelope.....	20,010	@	1.00	20,010.00	
Non-Resident Antelope.....	1,760	@	20.00	35,200.00	
Moose.....	703	@	25.00	17,575.00	
Duplicate Special Permit.....	1	@	1.00	1.00	
				\$2,486,715.60	
Less Dealers' Fees.....				71,228.15	\$2,415,487.45
1964 Accounts Paid.....					1,747.75
1965 Accounts Paid.....					12,807.65
					\$2,430,042.85

**Miscellaneous Sales:**

General Trapper.....	929	@	\$ 10.00	\$ 9,290.00	
Beaver Tags.....	8,144	@	.50	4,072.00	
Beaver Permits.....	205	@	5.00	1,025.00	
Outfitter.....	334	@	10.00	3,340.00	
Landowner Trapper.....	113	@	1.00	113.00	
Resident Fur Dealer.....	22	@	10.00	220.00	
Fur Dealer Agent.....	16	@	10.00	160.00	
Non-Resident Fur Dealer.....	1	@	50.00	50.00	
Taxidermist.....	20	@	15.00	300.00	
Minnow Seining.....	19	@	10.00	190.00	
				\$ 18,760.00	

**Miscellaneous Revenue:**

Fines.....				\$ 54,413.20	
Sale of Fish and Meats.....				4,774.42	
Land Lease—Clark Canyon.....				200.00	
Other Revenue.....				31,938.58	
Land Lease—Tiber.....				1,600.45	
Land Lease—Canyon Ferry.....				888.45	
Interest on Bonds.....				3,637.50	
Rough Fish—Fort Peck.....				180.43	\$ 97,633.03
					\$2,546,435.88
Pittman-Robertson Income					
by Federal Reimbursement.....					496,154.90
Dingell-Johnson Income					
by Federal Reimbursement.....					148,431.41

**TOTAL INCOME TO DEPARTMENT—**

May 1, 1966 to April 30, 1967.....					\$3,191,022.19
------------------------------------	--	--	--	--	----------------

**MONTANA FISH AND GAME DEPARTMENT  
STATEMENT OF INCOME**

May 1, 1967—April 30, 1968

**Hunting and Fishing Licenses:**

Resident Fishing.....	119,983	@	\$ 4.00	\$ 479,932.00	
Resident Bird.....	41,456	@	2.00	82,912.00	
Resident Fishing-Bird.....	15,077	@	6.00	90,462.00	
Resident Bird-Youth.....	4,808	@	1.00	4,808.00	
Resident Fishing Duplicates.....	2,100	@	1.00	2,100.00	
Non-Resident Limited Fishing.....	51,060	@	5.00	255,300.00	
Non-Resident Season Fishing.....	6,961	@	15.00	104,415.00	
Non-Resident Bird.....	572	@	25.00	14,300.00	
Non-Resident Fishing Duplicates.....	102	@	1.00	102.00	
Elk-Adult.....	9,035	@	3.00	27,105.00	
Deer A-Adult.....	46,990	@	3.00	140,970.00	
Elk-Deer A-Adult.....	57,392	@	6.00	344,352.00	
Elk-Youth.....	477	@	1.50	715.50	
Deer A-Youth.....	4,986	@	1.50	7,479.00	
Elk-Deer A-Youth.....	3,783	@	3.00	11,349.00	
Elk-Deer A Duplicates.....	1,128	@	1.00	1,128.00	
Deer B-Adult.....	16,871	@	5.00	84,355.00	
Deer B-Youth.....	1,475	@	2.50	3,687.50	
Deer B Duplicates.....	110	@	1.00	110.00	
Resident Combination.....	4,232	@	12.00	50,784.00	
Resident Combination Duplicates.....	84	@	1.00	84.00	
Non-Resident Big Game.....	7,491	@	125.00	936,375.00	
Non-Resident Big Game Duplicates.....	20	@	1.00	20.00	
Resident Mt. Sheep.....	205	@	25.00	5,125.00	
Resident Mt. Goat.....	709	@	15.00	10,635.00	
Resident Turkey.....	1,377	@	2.00	2,754.00	
Resident Grizzly.....	1,022	@	1.00	1,022.00	
Resident Special Duplicates.....	7	@	1.00	7.00	
Sportsman.....	472	@	20.00	9,440.00	
Sportsman Duplicates.....	5	@	1.00	5.00	
Non-Resident Mt. Sheep.....	68	@	50.00	3,400.00	
Non-Resident Mt. Goat.....	285	@	30.00	8,550.00	
Non-Resident Turkey.....	80	@	2.00	160.00	
Non-Resident Grizzly.....	143	@	25.00	3,575.00	
Non-Resident Special Duplicates.....	1	@	1.00	1.00	
Bow and Arrow.....	2,129	@	3.00	6,387.00	
Shipping Permits.....	145	@	.60	87.00	
Non-Resident Bear.....	7	@	20.00	140.00	
Non-Resident Bear.....	29	@	35.00	1,015.00	
Non-Resident Deer.....	4,439	@	35.00	155,365.00	
Non-Resident Antelope.....	1,818	@	35.00	63,630.00	
Resident Antelope.....	16,601	@	3.00	49,803.00	
Non-Resident Antelope.....	1,500	@	10.00	15,000.00	
Resident Moose.....	598	@	25.00	14,950.00	
Non-Resident Moose.....	34	@	50.00	1,700.00	
Other Special Duplicates.....	64	@	1.00	64.00	
Grizzly Trophy.....	24	@	25.00	600.00	
				<u>2,996,260.00</u>	
Less Dealers' Fees.....				<u>59,267.10</u>	\$2,936,992.90
1966 Accounts Paid.....					14,476.05
Less cash receipt adj. & rtd. ck.....					<u>-124.50</u>
					<u>2,951,344.45</u>

**Miscellaneous Sales:**

General Trapper.....	837	@	\$ 10.00	\$ 8,370.00	
Beaver Tags.....	16,199	@	.50	8,099.50	
Beaver Permits.....	108	@	10.00	1,080.00	
Outfitter.....	428	@	10.00	4,280.00	
Landowner Trapper.....	104	@	1.00	104.00	
Resident Fur Dealer.....	21	@	10.00	210.00	
Fur Dealer Agent.....	23	@	10.00	230.00	
Non-Resident Fur Dealer.....	2	@	50.00	100.00	
Taxidermist.....	29	@	15.00	435.00	
Minnow Seining.....	26	@	10.00	260.00	
Commercial Beaver Tags.....	373	@	.05	18.65	
Commercial Marten Tags.....	1	@	.05	.05	
				<u>23,187.20</u>	

Brought Forward..... 2,974,531.65

**Miscellaneous Revenue:**

Fines .....	60,160.21	
Sale of Fish & Meats.....	5,908.65	
Land Lease—Clark Canyon .....	520.00	
Other Revenue .....	116,934.48	
Land Lease—Tiber .....	1,754.80	
Land Lease—Canyon Ferry .....	6,976.53	
Bureau of Outdoor Rec. Reimbursement .....	43,838.56	
Bond Interest .....	3,525.00	
Lewis & Clark Cavern Ticket Sales .....	52,487.40	
		<u>292,105.63</u>
Pittman-Robertson Income		
by Federal Reimbursement .....		591,442.59
Dingell-Johnson Income		
by Federal Reimbursement .....		216,023.19
Bureau of Commercial Fisheries		
by Federal Reimbursement .....		<u>41,106.67</u>
<b>TOTAL REGULAR FISH AND GAME INCOME.....</b>		<b><u>\$4,115,209.73</u></b>

A magnificent bighorn sheep ram—photo by Gerry Atwell.





## DETAIL OF EXPENDITURES

For Fiscal Years Ending April 30, 1967, and April 30, 1968

	April 1967	April 1968
<b>ADMINISTRATIVE DIVISION:</b>		
<b>COMMISSIONERS</b>		
Per Diem .....	\$ 3,977.99	\$ 3,232.07
Operation .....	\$ 9,968.55	\$ 9,501.69
Capital Expenditures .....	\$ 16.50	\$ 46.05
<b>TOTAL</b> .....	<b>\$ 13,963.04</b>	<b>\$ 12,779.81</b>
<b>GENERAL ADMINISTRATION</b>		
Salaries and Benefits .....	\$ 190,777.35	\$ 175,053.33
Operation .....	30,810.80	7,204.99
Repair and Maintenance .....	2,284.16	1,202.72
Capital Expenditures .....	3,757.59	2,105.03
<b>TOTAL</b> .....	<b>\$ 227,629.90</b>	<b>\$ 185,566.07</b>
<b>GRANTS</b>		
University of Montana Education .....	\$ 9,500.00	\$ 11,850.00
Montana State University Wildlife .....	12,000.00	13,700.00
Wildlife Research Unit .....	19,133.75	19,027.93
Fisheries Research Unit .....	10,000.00	10,000.00
Enforcement and Rabies Control .....	13,306.68	15,888.69
Predator Control .....	27,912.11	44,661.35
<b>TOTAL</b> .....	<b>\$ 91,852.55</b>	<b>\$ 115,127.97</b>
<b>DISTRICT HEADQUARTERS</b>		
Salaries and Benefits .....	\$ 1,055.17	\$ 188.43
Operation .....	(11,636.30)	(11,777.54)
Repair and Maintenance .....	5,840.10	8,253.20
Capital Expenditures .....	10,384.41	920.59
<b>TOTAL</b> .....	<b>\$ 5,643.38</b>	<b>\$ (2,415.32)</b>
<b>DISTRICT SUPERVISORS</b>		
Salaries and Benefits .....	\$ 69,522.85	\$ 86,446.12
Operation .....	12,992.34	13,098.95
Repair and Maintenance .....	22.49	104.68
Capital Expenditures .....	1.06	86.19
<b>TOTAL</b> .....	<b>\$ 82,538.74</b>	<b>\$ 99,735.94</b>
<b>AIRPLANE ACCOUNT</b>		
Salaries and Benefits .....	\$ 796.69	\$ 509.43
Operation .....	14,024.36	18,633.22
Repair and Maintenance .....	1,305.16	540.40
Capital Expenditures .....	—	9,041.41
Credit for Airplane Rental .....	(13,221.70)	(12,656.10)
<b>TOTAL</b> .....	<b>\$ 3,904.51</b>	<b>\$ 16,068.36</b>
<b>VEHICLE ACCOUNT</b>		
Operation .....	\$ 155,347.00	\$ 157,520.91
Capital Expenditures .....	169,849.49	82,286.40
Credit for Vehicle Rental .....	(95,603.00)	(93,805.33)
<b>TOTAL</b> .....	<b>\$ 229,593.49</b>	<b>\$ 146,001.98</b>
<b>OVERSNOW VEHICLES</b>		
Operation .....	—	\$ 80.05
<b>TOTAL</b> .....	<b>\$ —</b>	<b>\$ 80.05</b>

## DETAIL OF EXPENDITURES—(Continued)

	April 1967	April 1968
<b>HELICOPTER ACCOUNT</b>		
Salaries and Benefits.....	\$ 144.01	\$ 91.59
Operation .....	8,519.58	9,758.23
Credit for Helicopter Rental.....	<u>(9,730.52)</u>	<u>(16,212.50)</u>
TOTAL .....	<u>\$ (1,066.93)</u>	<u>\$ ( 6,362.68)</u>
<b>HELENA WAREHOUSE</b>		
Salaries and Benefits.....	\$ 14,961.53	\$ 21,046.40
Operation .....	601.42	1,482.09
Repair and Maintenance .....	179.83	259.13
Capital Expenditures.....	<u>436.58</u>	<u>3,221.02</u>
TOTAL .....	<u>\$ 16,179.36</u>	<u>\$ 26,008.64</u>
<b>MECHANIC SHOP</b>		
Salaries and Benefits.....	\$ 16,495.69	\$ 11,081.73
Operation .....	638.86	889.24
Capital Expenditures.....	<u>347.88</u>	<u>21.26</u>
TOTAL .....	<u>\$ 17,482.43</u>	<u>\$ 11,992.23</u>
<b>HELENA WAREHOUSE INVENTORY</b>		
Operation .....	\$ 2.28	\$ 18.63
Capital Construction Material.....	<u>39,527.35</u>	<u>35,538.68</u>
TOTAL .....	<u>\$ 39,529.63</u>	<u>\$ 35,548.31</u>
<b>MISCELLANEOUS ACCOUNTS</b>		
Canyon Ferry .....	\$ 50.79	\$ 239.49
Tiber Reservoir.....	358.69	1,015.32
Search and Rescue.....	75.00	131.05
Clark Canyon .....	--	120.00
Hamilton Research.....	6.21	--
TOTAL .....	<u>\$ 490.69</u>	<u>\$ 1,505.86</u>
TOTAL ADMINISTRATIVE DIVISION.....	<u>\$ 726,740.79</u>	<u>\$ 641,646.22</u>
<b>INFORMATION—EDUCATION DIVISION</b>		
<b>ADMINISTRATION</b>		
Salaries and Benefits.....	\$ 54,379.31	\$ 60,284.02
Operation .....	61,968.64	40,932.81
Repair and Maintenance .....	61.54	442.41
Capital Expenditures.....	<u>2,065.81</u>	<u>1,135.13</u>
TOTAL .....	<u>\$ 118,475.30</u>	<u>\$ 102,794.37</u>
<b>HUNTER SAFETY</b>		
Salaries and Benefits.....	\$ 10,648.82	\$ 10,955.90
Operation .....	4,814.14	5,719.53
Repair and Maintenance .....	43.04	78.04
Capital Expenditures.....	<u>286.15</u>	<u>66.00</u>
TOTAL .....	<u>\$ 15,792.15</u>	<u>\$ 16,819.47</u>
<b>FAIRS AND EXHIBITS</b>		
Salaries and Benefits.....	\$ 4,438.77	\$ 3,860.93
Operation .....	3,819.17	8,575.42
Repair and Maintenance .....	4.75	69.12
Capital Expenditures .....	<u>39.15</u>	<u>384.97</u>
TOTAL .....	<u>\$ 8,301.84</u>	<u>\$ 12,890.44</u>
<b>MOVIES AND TV FILMS</b>		
Salaries and Benefits.....	\$ 18,049.77	\$ 24,662.13
Operation .....	17,657.94	16,720.39
Repair and Maintenance .....	92.18	474.71
Capital Expenditures.....	<u>3,324.33</u>	<u>1,086.14</u>
TOTAL .....	<u>\$ 39,124.22</u>	<u>\$ 42,943.37</u>

	April 1967	April 1968
<b>PHOTO LAB AND PRINT SHOP</b>		
Salaries and Benefits.....	\$ 5,567.57	\$ 5,980.53
Operation .....	1,067.75	737.76
TOTAL .....	<u>\$ 6,635.32</u>	<u>\$ 6,718.29</u>
<b>DISTRICT 1 PROGRAM</b>		
Salaries and Benefits.....	\$ 9,333.18	\$ 9,877.62
Operation .....	4,746.56	4,205.17
Repair and Maintenance.....	95.20	32.40
Capital Expenditures .....	254.97	185.79
TOTAL .....	<u>\$ 14,429.91</u>	<u>\$ 14,300.98</u>
<b>DISTRICT 2 PROGRAM</b>		
Salaries and Benefits.....	\$ 9,324.65	\$ 9,616.95
Operation .....	2,910.06	2,963.65
Repair and Maintenance.....	41.90	29.85
Capital Expenditures.....	600.00	208.10
TOTAL .....	<u>\$ 12,876.61</u>	<u>\$ 12,818.55</u>
<b>DISTRICT 3 PROGRAM</b>		
Salaries and Benefits.....	\$ 10,475.81	\$ 9,394.49
Operation .....	3,206.77	2,982.75
Repair and Maintenance.....	34.25	277.83
Capital Expenditures .....	339.19	550.99
TOTAL .....	<u>\$ 14,056.02</u>	<u>\$ 13,206.06</u>
<b>DISTRICT 4 PROGRAM</b>		
Salaries and Benefits.....	\$ 9,316.65	\$ 9,901.98
Operation .....	4,303.49	3,584.92
Repair and Maintenance.....	3.17	149.52
Capital Expenditures .....	482.75	260.19
TOTAL .....	<u>\$ 14,106.05</u>	<u>\$ 13,896.61</u>
<b>DISTRICT 5 PROGRAM</b>		
Salaries and Benefits.....	\$ 6,751.76	\$ 9,087.82
Operation .....	4,039.36	3,430.06
Repair and Maintenance.....	63.67	12.50
Capital Expenditures .....	630.91	258.55
TOTAL .....	<u>\$ 11,485.70</u>	<u>\$ 12,788.93</u>
<b>DISTRICT 6 PROGRAM</b>		
Salaries and Benefits.....	\$ 6,678.71	\$ 6,918.66
Operation .....	3,601.88	2,632.61
Repair and Maintenance.....	2.00	14.00
Capital Expenditures .....	1,408.82	256.41
TOTAL .....	<u>\$ 11,691.41</u>	<u>\$ 9,821.68</u>
<b>DISTRICT 7 PROGRAM</b>		
Salaries and Benefits.....	\$ 7,870.62	\$ 7,984.35
Operation .....	4,061.80	4,047.03
Repair and Maintenance.....	34.29	35.36
Capital Expenditures.....	267.40	101.48
TOTAL .....	<u>\$ 12,234.11</u>	<u>\$ 12,168.22</u>
<b>PUBLICATIONS</b>		
Operation .....	\$ 3,134.35	\$ 14,114.06
TOTAL .....	<u>\$ 3,134.35</u>	<u>\$ 14,114.06</u>
TOTAL INFORMATION—EDUCATION.....	<u>\$ 282,342.99</u>	<u>\$ 285,281.03</u>

**DETAIL OF EXPENDITURES—(Continued)**

FISHERIES DIVISION		April 1967	April 1968
<b>ADMINISTRATION</b>			
Salaries and Benefits.....	\$	36,202.09	\$ 39,819.33
Operation.....		13,031.83	21,860.62
Repair and Maintenance.....		39.65	199.90
Capital Expenditures.....		312.26	1,290.73
<b>TOTAL</b> .....	<b>\$</b>	<b>49,585.83</b>	<b>\$ 63,170.58</b>
<b>ANACONDA HATCHERY</b>			
Salaries and Benefits.....	\$	28,972.06	\$ 30,209.37
Operation.....		13,798.93	16,165.52
Repair and Maintenance.....		1,804.26	5,420.49
Capital Expenditures.....		6,959.30	16,051.44
<b>TOTAL</b> .....	<b>\$</b>	<b>51,534.55</b>	<b>\$ 67,846.82</b>
<b>ARLEE HATCHERY</b>			
Salaries and Benefits.....	\$	23,966.97	\$ 22,414.52
Operation.....		7,165.37	9,829.63
Repair and Maintenance.....		446.53	277.23
Capital Expenditures.....		254.67	4,781.46
<b>TOTAL</b> .....	<b>\$</b>	<b>31,833.54</b>	<b>\$ 37,302.84</b>
<b>BIG TIMBER HATCHERY</b>			
Salaries and Benefits.....	\$	15,448.28	\$ 15,515.96
Operation.....		2,283.68	2,361.09
Repair and Maintenance.....		88.42	181.19
Capital Expenditures.....		41.26	5.80
<b>TOTAL</b> .....	<b>\$</b>	<b>17,861.64</b>	<b>\$ 18,064.04</b>
<b>BLUEWATER HATCHERY</b>			
Salaries and Benefits.....	\$	28,809.27	\$ 30,362.63
Operation.....		10,565.75	15,427.83
Repair and Maintenance.....		727.26	1,756.34
Capital Expenditures.....		569.48	774.43
<b>TOTAL</b> .....	<b>\$</b>	<b>40,671.76</b>	<b>\$ 48,321.23</b>
<b>GREAT FALLS HATCHERY</b>			
Salaries and Benefits.....	\$	22,797.13	\$ 23,876.64
Operation.....		14,539.17	12,407.63
Repair and Maintenance.....		745.17	1,466.56
Capital Expenditures.....		383.50	368.45
<b>TOTAL</b> .....	<b>\$</b>	<b>38,464.97</b>	<b>\$ 38,119.28</b>
<b>LEWISTOWN HATCHERY</b>			
Salaries and Benefits.....	\$	42,869.55	\$ 43,240.80
Operation.....		44,711.35	40,447.01
Repair and Maintenance.....		2,269.48	2,756.23
Capital Expenditures.....		3,161.92	990.57
<b>TOTAL</b> .....	<b>\$</b>	<b>93,012.30</b>	<b>\$ 87,434.61</b>
<b>LIBBY HATCHERY</b>			
Salaries and Benefits.....	\$	15,322.95	\$ 16,720.87
Operation.....		4,095.38	5,044.00
Repair and Maintenance.....		833.27	1,047.60
Capital Expenditures.....		1,143.87	395.41
<b>TOTAL</b> .....	<b>\$</b>	<b>21,395.47</b>	<b>\$ 23,207.88</b>
<b>SOMERS HATCHERY</b>			
Salaries and Benefits.....	\$	25,977.39	\$ 23,051.02
Operation.....		4,148.96	9,155.56
Repair and Maintenance.....		813.56	437.22
<b>TOTAL</b> .....	<b>\$</b>	<b>30,939.91</b>	<b>\$ 32,643.80</b>

	April 1967	April 1968
<b>SPAWNING STATIONS</b>		
Salaries and Benefits.....	\$ 3,120.22	\$ 2,697.61
Operation .....	4,017.23	4,386.92
Repair and Maintenance .....	98.44	56.00
<b>TOTAL .....</b>	<b><u>\$ 7,235.89</u></b>	<b><u>\$ 7,140.53</u></b>
<b>DISTRICT PROJECTS</b>		
Salaries and Benefits.....	\$ 74,750.79	\$ 70,422.82
Operation .....	58,067.23	36,986.70
Repair and Maintenance .....	8,148.42	324.92
Capital Expenditures .....	2,649.44	6,241.34
<b>TOTAL .....</b>	<b><u>\$ 143,615.88</u></b>	<b><u>\$ 113,975.78</u></b>
<b>DINGELL—JOHNSON PROJECTS</b>		
Salaries and Benefits.....	\$ 142,994.62	\$ 169,561.54
Operation .....	64,503.57	81,327.83
Repair and Maintenance .....	1,280.47	2,707.99
Capital Expenditures .....	29,748.95	9,453.12
<b>TOTAL .....</b>	<b><u>\$ 238,527.61</u></b>	<b><u>\$ 263,050.48</u></b>
<b>COMMERCIAL FISHERIES PROJECTS</b>		
Salaries and Benefits.....	\$ 12,443.16	\$ 17,444.31
Operation .....	1,605.16	2,449.14
Repair and Maintenance .....	293.70	752.68
Capital Expenditures .....	20,359.36	2,038.38
<b>TOTAL .....</b>	<b><u>\$ 34,701.38</u></b>	<b><u>\$ 22,684.51</u></b>
<b>TOTAL FISHERIES DIVISION.....</b>	<b><u>\$ 799,380.73</u></b>	<b><u>\$ 822,962.38</u></b>
<b>ENFORCEMENT DIVISION</b>		
<b>ADMINISTRATION</b>		
Salaries and Benefits.....	\$ 75,274.79	\$ 43,718.40
Operation .....	51,190.23	49,626.59
Repair and Maintenance .....	102.35	114.83
Capital Expenditures .....	1,931.73	639.11
<b>TOTAL .....</b>	<b><u>\$ 128,499.10</u></b>	<b><u>\$ 94,098.93</u></b>
<b>DISTRICT 1 ENFORCEMENT</b>		
Salaries and Benefits.....	\$ 72,580.24	\$ 87,431.91
Operation .....	17,349.82	20,599.65
Repair and Maintenance .....	285.50	356.18
Capital Expenditures .....	78.74	820.79
<b>TOTAL .....</b>	<b><u>\$ 90,294.30</u></b>	<b><u>\$ 109,208.53</u></b>
<b>DISTRICT 2 ENFORCEMENT</b>		
Salaries and Benefits.....	\$ 78,576.21	\$ 78,514.37
Operation .....	18,144.32	17,507.10
Repair and Maintenance .....	619.34	380.51
Capital Expenditures .....	190.55	447.42
<b>TOTAL .....</b>	<b><u>\$ 97,530.42</u></b>	<b><u>\$ 96,849.40</u></b>
<b>DISTRICT 3 ENFORCEMENT</b>		
Salaries and Benefits.....	\$ 103,151.10	\$ 103,191.15
Operation .....	28,932.29	31,233.16
Repair and Maintenance .....	445.82	386.61
Capital Expenditures .....	1,889.63	669.77
<b>TOTAL .....</b>	<b><u>\$ 134,418.84</u></b>	<b><u>\$ 135,480.69</u></b>
<b>DISTRICT 4 ENFORCEMENT</b>		
Salaries and Benefits.....	\$ 91,561.85	\$ 103,380.14
Operation .....	22,854.23	25,169.47

**DETAIL OF EXPENDITURES—(Continued)**

	April 1967	April 1968
Repair and Maintenance .....	526.73	465.31
Capital Expenditures .....	1,216.15	540.11
<b>TOTAL .....</b>	<b>\$ 116,158.96</b>	<b>\$ 129,555.03</b>
<b>DISTRICT 5 ENFORCEMENT</b>		
Salaries and Benefits.....	\$ 71,474.14	\$ 87,333.77
Operation .....	16,795.29	20,310.60
Repair and Maintenance .....	423.81	664.63
Capital Expenditures .....	254.93	140.18
<b>TOTAL .....</b>	<b>\$ 88,948.17</b>	<b>\$ 108,449.18</b>
<b>DISTRICT 6 ENFORCEMENT</b>		
Salaries and Benefits.....	\$ 58,376.63	\$ 66,437.09
Operation .....	16,201.65	17,778.60
Repair and Maintenance .....	141.68	522.19
Capital Expenditures .....	229.34	309.33
<b>TOTAL .....</b>	<b>\$ 74,949.30</b>	<b>\$ 85,047.21</b>
<b>DISTRICT 7 ENFORCEMENT</b>		
Salaries and Benefits.....	\$ 55,232.23	\$ 56,082.65
Operation .....	16,002.76	14,912.54
Repair and Maintenance .....	289.94	174.65
Capital Expenditures .....	467.53	195.62
<b>TOTAL .....</b>	<b>\$ 71,992.46</b>	<b>\$ 71,365.46</b>
<b>TOTAL ENFORCEMENT DIVISION .....</b>	<b>\$ 802,791.55</b>	<b>\$ 830,054.43</b>
<b>GAME MANAGEMENT DIVISION</b>		
<b>ADMINISTRATION</b>		
Salaries and Benefits.....	\$ 13,651.18	\$ 12,471.47
Operation .....	37,017.88	39,275.45
Repair and Maintenance .....	629.03	63.91
<b>TOTAL .....</b>	<b>\$ 51,298.09</b>	<b>\$ 51,810.83</b>
<b>WARM SPRINGS GAME FARM</b>		
Salaries and Benefits.....	\$ 18,699.14	\$ 19,998.63
Operation .....	13,050.89	11,112.47
Repairs and Maintenance .....	866.76	963.55
Capital Expenditures .....	1,458.07	251.14
<b>TOTAL .....</b>	<b>\$ 34,074.86</b>	<b>\$ 32,298.79</b>
<b>MOIESE GAME FARM</b>		
Repairs and Maintenance .....	\$ (102.71)	\$ 28.68
<b>TOTAL .....</b>	<b>\$ (102.71)</b>	<b>\$ 28.68</b>
<b>MISCELLANEOUS PROJECTS</b>		
Game Control.....	\$ 8,193.98	\$ 12,393.28
Turkey Transplanting .....	1,991.53	1,232.62
Elk Transplanting .....	1,844.66	2,098.13
Trapping for Other States .....	—	187.82
Blue Grouse Study .....	15,640.37	9,815.84
Wildlife Inventory Study .....	3,663.90	8,914.32
Sagebrush Control Study .....	—	20,334.71
Canyon Ferry Bird Management.....	—	(1,113.47)
<b>TOTAL .....</b>	<b>\$ 31,334.44</b>	<b>\$ 53,863.25</b>
<b>PITTMAN—ROBERTSON PROJECTS</b>		
Salaries and Benefits.....	\$ 410,765.31	\$ 400,139.83
Operation .....	170,157.35	179,339.50
Repair and Maintenance .....	20,534.53	27,636.02

	April 1967	April 1968
Capital Expenditures.....	63,959.62	41,872.83
Student Grants.....	--	11,711.35
TOTAL.....	<u>\$ 665,416.81</u>	<u>\$ 660,699.53</u>
TOTAL GAME MANAGEMENT DIVISION.....	<u>\$ 782,021.49</u>	<u>\$ 798,701.08</u>
<b>RECREATION AND PARKS DIVISION</b>		
<b>RECREATION PLANNING</b>		
Salaries and Benefits.....	\$ 51,010.47	\$ 58,544.00
Operation.....	15,230.15	16,826.66
Repair and Maintenance.....	190.05	137.75
Capital Construction.....	25,454.33	4,757.07
TOTAL.....	<u>\$ 91,885.00</u>	<u>\$ 80,265.48</u>
<b>FISHING ACCESS DEVELOPMENT</b>		
Salaries and Benefits.....	\$ 29,230.07	\$ 26,077.22
Operation.....	15,808.39	22,605.12
Repair and Maintenance.....	3,449.26	2,608.01
Capital Construction.....	63,787.19	54,746.60
TOTAL.....	<u>\$ 112,274.91</u>	<u>\$ 106,036.95</u>
<b>STATE PARKS SECTION</b>		
Salaries and Benefits.....	\$ 151,202.39	\$ 146,356.55
Operation.....	109,806.03	76,412.62
Repair and Maintenance.....	24,977.14	12,339.56
Capital Construction.....	139,901.15	152,062.73
TOTAL.....	<u>\$ 425,886.71</u>	<u>\$ 387,171.46</u>
TOTAL RECREATION AND PARKS DIVISION.....	<u>\$ 630,046.62</u>	<u>\$ 573,473.89</u>
GRAND TOTAL FISH AND GAME DEPARTMENT.....	<u>\$4,023,324.17</u>	<u>\$3,952,119.03</u>

**1966 HUNTING AND FISHING LICENSE SALES BY COUNTIES**

County	Non-Res.		Resident		Non-Res.		Resident		Elk		Elk		Elk		Deer		Deer		Non-Res.		Sheep		Special Permits	TOTALS
	Season	Flg.	Comb.	Non-Res.	Bird	Flg.	Comb.	Non-Res.	Bird	Deer A	Deer B	Deer A & B	Deer A	Deer B	A & B	Big Game	Ulim.	Goat	Turkey	Arrow	Ret. Bear			
Beaverhead.....	1,972	5,027	481	523	3	1,489	35	31	28	1,566	204	6	53	574	—	—	14	5	—	—	—	—	12,011	
Big Horn.....	970	2,229	82	527	12	813	25	143	19	281	16	—	566	18	2	—	70	12	—	—	—	—	3,785	
Blaine.....	776	15	228	1	787	84	204	26	249	40	4	—	412	8	1	—	—	35	—	—	—	—	2,037	
Broadwater.....	545	280	14	203	—	489	28	39	37	348	201	—	—	52	—	—	6	9	—	—	—	—	2,278	
Caribou.....	1,503	787	95	407	3	1,078	63	256	42	645	90	—	330	645	23	1	—	6	19	—	—	—	5,465	
Carter.....	198	15	5	151	1	385	5	27	5	94	2	—	416	18	—	—	61	5	—	—	—	—	1,900	
Chouteau.....	14,330	2,112	270	4,194	31	10,405	419	1,457	227	6,747	1,939	70	1,141	210	3	99	71	390	1	—	—	—	44,116	
Custer.....	962	86	14	415	1	844	87	328	40	343	252	3	193	10	—	—	2	3	40	—	—	—	2,614	
Daniels.....	1,423	107	14	408	4	1,706	69	477	33	290	23	1	1,135	178	2	4	14	1	—	—	—	—	3,084	
Deer Lodge.....	253	6	1	219	—	1,734	47	31	2	1,653	81	—	—	—	—	—	2	85	84	—	—	—	1,558	
Dewey.....	1,365	145	18	1,088	2	1,748	70	190	33	290	19	2	1,653	81	—	—	2	85	84	—	—	—	6,430	
Fallon.....	3,622	1,037	137	463	2	1,983	42	126	12	138	14	4	49	62	3	8	—	37	—	—	—	—	2,637	
Flint.....	2,560	710	66	997	24	2,658	194	623	172	1,615	360	72	1,086	197	2	9	175	118	—	—	—	—	11,673	
Fergus.....	7,555	4,465	578	3,192	9	6,800	297	1,196	119	2,306	5,602	22	1,74	316	—	153	13	140	—	—	—	—	33,943	
Glacier.....	6,113	12,839	1,453	2,208	27	4,349	215	410	113	3,931	863	39	473	570	89	16	32	169	6	—	—	—	33,905	
Grant.....	165	44	8	79	4	298	15	10	93	6	—	—	703	40	—	—	95	1	25	—	—	—	1,139	
Granite.....	1,078	832	340	482	4	1,031	73	166	23	608	298	6	92	33	—	4	1	25	—	—	—	—	5,096	
Golden Valley.....	168	31	1	57	—	143	9	52	4	49	13	—	—	—	—	—	2	6	—	—	—	—	607	
Hill.....	652	313	53	218	—	573	22	29	5	95	572	—	5	29	—	1	—	10	—	—	—	—	2,577	
Jefferson.....	2,372	179	25	893	5	2,044	139	560	85	740	145	9	919	18	—	—	4	8	73	—	—	—	8,218	
Judith Basin.....	643	381	41	196	—	562	18	38	14	457	222	5	11	48	—	—	—	22	—	—	—	—	2,658	
Lake.....	2,718	2,854	273	912	16	1,874	73	188	22	665	1,405	3	29	23	—	—	10	9	—	—	—	—	1,927	
Lewis & Clark.....	6,872	1,839	233	1,920	12	5,137	160	421	158	3,463	1,973	12	214	3,518	93	336	128	144	3	—	—	—	11,228	
Liberty.....	393	55	10	209	—	218	9	932	5	118	77	—	16	5	3	—	—	22	—	—	—	—	2,636	
Lincoln.....	3,300	1,614	357	1,105	12	3,249	70	332	32	458	3,296	1	11	62	—	—	3	5	46	5	—	—	13,958	
Madison.....	1,247	5,926	523	492	19	933	15	25	16	1,065	147	8	59	295	24	2	—	12	3	—	—	—	10,811	
McCone.....	435	41	5	144	1	369	39	62	1	79	6	—	301	14	—	—	35	3	—	—	—	—	1,536	
Meagher.....	647	253	42	171	3	643	63	52	29	345	365	1	32	64	1	—	—	3	3	—	—	—	2,745	
Miners.....	676	1,068	541	232	10	820	43	59	11	713	799	1	15	203	—	—	—	46	70	4	—	—	4,630	
Missoula.....	10,611	4,738	682	3,405	36	8,627	311	685	163	3,230	6,433	17	153	522	3	310	202	28	—	—	—	—	46,505	
Moore.....	2,787	247	27	1,024	1	2,157	19	11	2	1,874	277	26	429	333	32	4	16	72	8	—	—	—	12,265	
Park.....	11	3	—	—	—	15	5	18	5	28	3	—	83	4	—	—	—	2	—	—	—	—	437	
Park County.....	614	37	6	326	6	945	25	182	12	481	30	2	628	10	—	—	—	58	—	—	—	—	3,398	
Powder River.....	1,359	171	54	704	5	1,377	56	226	49	921	261	9	315	71	—	—	22	16	13	—	—	—	5,449	
Powder River.....	265	38	12	62	1	459	5	135	8	68	6	—	—	—	—	—	44	13	—	—	—	—	1,502	
Pratt.....	1,300	374	40	327	2	1,187	43	93	25	658	690	1	21	103	—	—	18	—	—	—	—	—	4,897	
Premier.....	245	9	2	56	—	267	9	96	12	37	3	—	189	4	—	—	4	—	—	—	—	—	933	
Ravalli.....	2,571	1,948	232	756	5	2,198	102	100	60	756	1,774	1	37	308	1	101	13	15	3	—	—	—	10,981	
Richland.....	993	47	16	466	26	1,295	44	184	38	215	9	1	1,151	21	—	—	34	64	—	—	—	—	4,604	
Roosevelt.....	826	59	9	626	9	1,192	181	292	28	329	32	5	827	24	—	—	—	33	42	—	—	—	4,514	
Rosebud.....	567	51	7	240	16	808	23	190	11	193	9	1	588	18	—	—	100	12	—	—	—	—	2,834	
Sanders.....	1,244	1,157	172	646	7	1,459	27	111	8	132	1,842	6	3	176	—	—	5	44	18	5	—	—	7,102	
Sheridan.....	329	42	5	356	17	878	35	653	22	96	26	3	192	5	—	—	13	12	—	—	—	—	2,684	
Silver Bow.....	8,959	1,529	170	1,190	5	5,561	107	203	68	4,632	1,034	17	120	220	—	—	14	1	162	—	—	—	23,992	
Stillwater.....	1,427	549	61	424	—	903	34	268	42	511	77	3	292	36	3	—	78	12	—	—	—	—	4,720	
Sweet Grass.....	640	78	323	2	558	30	108	22	627	75	2	—	185	136	3	—	1	21	—	—	—	—	3,316	
Teton.....	1,084	227	20	393	6	1,063	46	148	60	427	281	9	103	34	—	—	19	—	—	—	—	—	4,138	



# 1966 HUNTING AND FISHING LICENSE SALES BY COUNTIES

County	Resident Fishing	Non-Res. Lud. Fishg.	Non-Res. Season Fishg.	Resident Comb.	Non-Res. Bird	Resident Bird	Elk	Deer A	Deer B	Elk Deer A & B	Elk Deer A	Elk Deer B	Deer A & B	Non-Res. Big Game Unlim.	Mtn. Sheep	Mtn. Goat Unlim.	Turkey	Non-Res. Bow & Arrow	Special Permits	TOTALS	
Toole	812	85	60	422	1	842	49	218	25	336	344	6	39	4	-	-	1	25	-	3,269	
Treasure	115	10	-	47	2	172	14	36	5	44	3	1	106	-	3	-	-	-	-	558	
Valley	3,399	429	46	940	21	2,617	757	568	91	854	109	9	1,298	48	1	1	30	200	1	11,419	
Whitland	722	220	14	230	1	650	24	65	30	539	104	2	125	88	-	2	30	10	-	2,836	
Wilcox	129	11	13	47	-	151	3	25	1	32	3	-	127	4	-	-	7	1	-	394	
Yellowstone	12,063	1,535	204	4,005	27	10,136	600	1,786	246	5,349	535	44	3,863	209	17	11	1,089	217	5	41,941	
Idaho	7	273	321	3	-	11	-	-	-	6	14	-	-	1	-	-	-	-	-	546	
Utah	-	1,140	118	-	-	-	-	-	-	-	-	-	-	-	-	-	-	-	-	1,238	
Washington	-	34	5	-	-	-	-	-	-	-	-	-	-	3	-	-	-	-	-	42	
Wyoming	38	105	221	4	11	2	-	-	-	-	-	-	-	-	-	-	-	-	-	381	
<b>Special Permits</b>																					
Non-Resident Deer																					6,028
Non-Res. Antelope																					1,760
Resident Antelope																					20,010
Moose																					703
Sheep																					261
Goat																					752
<b>TOTALS</b>	<b>119,740</b>	<b>61,679</b>	<b>8,489</b>	<b>39,706</b>	<b>433</b>	<b>101,525</b>	<b>5,450</b>	<b>14,864</b>	<b>2,228</b>	<b>51,621</b>	<b>33,786</b>	<b>383</b>	<b>22,033</b>	<b>9,268</b>	<b>309</b>	<b>1,196</b>	<b>2,960</b>	<b>2,668</b>	<b>64</b>	<b>29,514</b>	<b>506,216</b>



# 1967 HUNTING AND FISHING LICENSE SALES BY COUNTIES

County	Res. Fish		Res. Bird		Res. Comb. Fish		Res. Bird		Res. Fish		Non-Res. Fish		Res. Elk		Deer A		Deer B		Deer C		Non-Res. Elk		Non-Res. Deer		Non-Res. Sheep		Non-Res. Goat		Non-Res. Turkey		Non-Res. Griz.		Non-Res. Bear		Non-Res. Mts		TOTALS																									
	Adult	Youth	Adult	Youth	Adult	Youth	Adult	Youth	Adult	Youth	Adult	Youth	Adult	Youth	Adult	Youth	Adult	Youth	Adult	Youth	Adult	Youth	Adult	Youth	Adult	Youth	Adult	Youth	Adult	Youth	Adult	Youth	Adult	Youth	Adult	Youth																										
Teton	920	490	164	81	173	14	6	68	342	559	4	51	51	153	15	54	23	3	24	4	2	1	17	1	1	1	1	1	1	1	1	1	1	1	1	1	1	3,218																								
Toole	708	397	110	54	68	16	2	128	285	339	8	48	15	41	16	32	5	2	1	1	1	16	1	1	1	1	1	1	1	1	1	1	1	1	1	1	2,418																									
Treasure	117	86	26	12	7	—	2	125	31	20	—	31	3	3	—	—	—	—	—	—	—	—	—	—	—	—	—	—	—	—	—	—	—	—	—	—	467																									
Valley	3,287	1,536	495	126	385	41	22	720	2,348	480	66	183	18	876	50	68	25	—	20	15	24	—	2	203	—	—	—	—	—	—	—	—	—	—	—	—	10,990																									
Wheatland	619	179	87	13	185	11	3	104	316	355	7	42	32	175	25	34	36	—	6	1	—	—	—	5	—	—	—	—	—	—	—	—	—	—	—	2,234																										
Willoux	120	46	9	6	10	3	1	6	142	15	—	22	—	29	12	—	—	—	6	1	—	—	—	—	—	—	—	—	—	—	—	—	—	—	432																											
Yellowstone	12,074	4,263	1,665	443	1,305	166	45	705	6,629	3,221	22	534	95	2,771	191	226	140	13	2	301	45	15	—	6	1	214	4	—	—	—	—	—	—	—	—	35,196																										
Idaho	1	—	—	—	47	5	1	—	—	2	—	—	—	—	—	—	—	—	—	—	—	—	—	—	—	—	—	—	—	—	—	—	—	—	—	56																										
Montana	—	—	—	—	90	5	—	—	—	—	—	—	—	—	—	—	—	—	—	—	—	—	—	—	—	—	—	—	—	—	—	—	—	—	—	959																										
Washington	—	—	—	—	27	1	—	—	—	—	—	—	—	—	—	—	—	—	—	—	—	—	—	—	—	—	—	—	—	—	—	—	—	—	—	44																										
Wyoming	9	1	—	—	89	153	10	—	—	—	—	—	—	—	—	—	—	—	—	—	—	—	—	—	—	—	—	—	—	—	—	—	—	—	—	262																										
Special Permits																															16,601	16,601																														
Res. Antelope																															1,500	1,500																														
Non-Res. Antelope																															598	598																														
Resident Moose																															34	34																														
Non-Res. Moose																															107	107																														
Resident Sheep																															36	36																														
Non-Res. Sheep																															628	628																														
Resident Goat																															4,439	4,439																														
Non-Res. Goat																															1,818	1,818																														
Non-Res. Deer \$35 ...																															4,439	4,439																														
Non-Res. Antl. \$35 ...																															1,818	1,818																														
TOTALS	119,983	41,456	15,077	4,808	51,060	6,961	572	9,035	46,990	57,392	477	4,986	3,783	16,871	1,475	4,232	7,491	98	81	1,377	1,022	472	32	194	80	143	2,129	7	29	24	25,852	474,189																														

INFORMATION-EDUCATION DIVISION  
MONTANA FISH & GAME DEPARTMENT

Helena, Montana  
ZIP 59601



Helena, Montana  
Sec. 34.66, P. L. & R.  
U. S. POSTAGE

PAID

Permit No. 50