

ROSS & MOUNT

ACCURACY & RELIABILITY IN POWER

RUBBER COMPRESSION MOLDING

LT-CMP-200-600-500-4



Servo Driven Pump

FORCE CONTROL AND INTELLIGENCE IN FLUID POWER.....

Column Hydraulic Presses : Ross & Mount Column presses provide precise , durable and cost effective performance. The presses consist of Cardened rods made out of ST-52.3 carbon steel . Press is designed for Rubber compression moulding to incorporate in automatic production lines.

- Multiple Daylight option up-to 4 daylights
- Hot platen up-to 250 deg C with PLC control
- Upward acting design with pressure hold up-to 45 minutes of curing time—Digital tonnage control
- Ejectors to facilitate components unloading
- Digital Servo driven —pump , driving the press for power efficiency

This hydraulic four column press from Ross has a force of 50 ton— 400 tonnes with centre mounted single/ Multiple Rams .The Bolster sizes ranges from 400 x 300 to 1200 x 900 mm, it has a vertical day light of 800 mm and a piston stroke of 600 mm.

All four column presses from Ross comply with the latest CE-regulations, are made in Europe / India will have a warranty of one year. These hydraulic presses can be delivered with several options, so please do contact us when you need some more information.

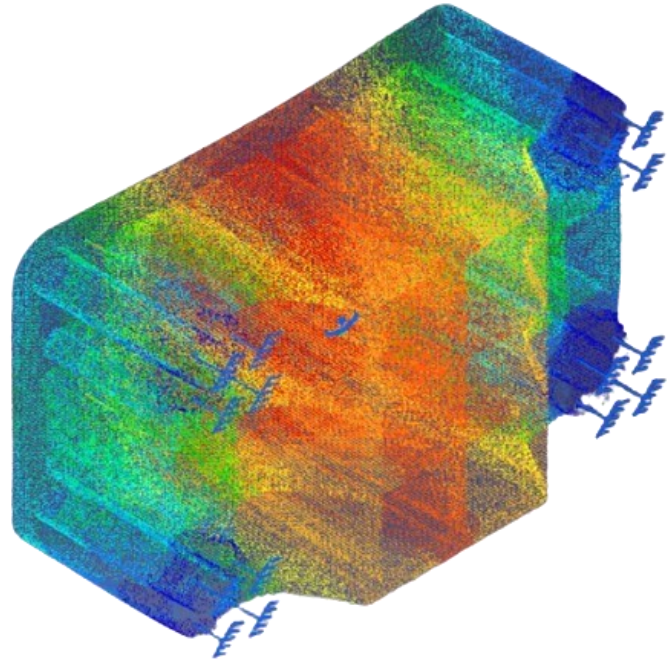


SPECIFICATIONS / TECHNISCHE DATEN		CLM - 500	CLM-800	CLM - 1000	CLM-1500	CLM-2200	CLM-3000
Force / Kraft	[tn]	50	80	100	150	220	300
Motor power / Motorleistung	[kw]	4	5.5	7.5	7.5	11	11
Working speed / Arbeitsgeschwindigkeit	[mm/sec]	6.3	6	6.2	3.9	3.8	2.8
Approaching speed / Annäherungsgeschwindigkeit	[mm/sec]	31.4	25	30.4	19.5	16.8	12.4
Return speed / Rücklaufgeschwindigkeit	[mm/sec]	41.9	36.1	47.5	30.4	30.3	18.4
Piston stroke / Kolbenhub	[mm]	450	450	450	450	450	450
Guides diameter / Durchmesser Führungen	[mm]	60	80	100	120	120	150
Useful table size / Nützliche Tisch Größe	[mm]	750 x 620	900 x 850	1050 x 950	1050 x 950	1200 x 950	1300 x 1000
Between columns / zwischen Säulen	[mm]	750 x 410	900 x 600	1050 x 650	1050 x 590	1200 x 590	1300 x 570
Vertical light / Lichte Höhe	[mm]	600	600	650	700	750	800
Working height / Arbeitshöhe	[mm]	750	900	900	900	900	900
Total length (lateral) / Gesamttiefe	[mm]	1020	1170	1350	1350	1450	1500
Total width (frontal) / Gesamtbreite	[mm]	1470	1650	1900	1940	2240	2650
Total height / Gesamthöhe	[mm]	2800	2875	2925	3050	3125	3250
Weight / Gewicht	[kg]	3200	3750	4300	5100	6560	7150

ADVANCED PRESS DESIGN

- » Energy Efficient Platens
- » Heavy Hydraulic cylinder
- » Ram guidance Systems
- » New hydraulic System
- » Latest control system

Ross presses are equipped with hydraulic Euro Lock system to prevent ram lowering, new covers, and an optical barrier or movable barrier. This conforms latest safety norms.

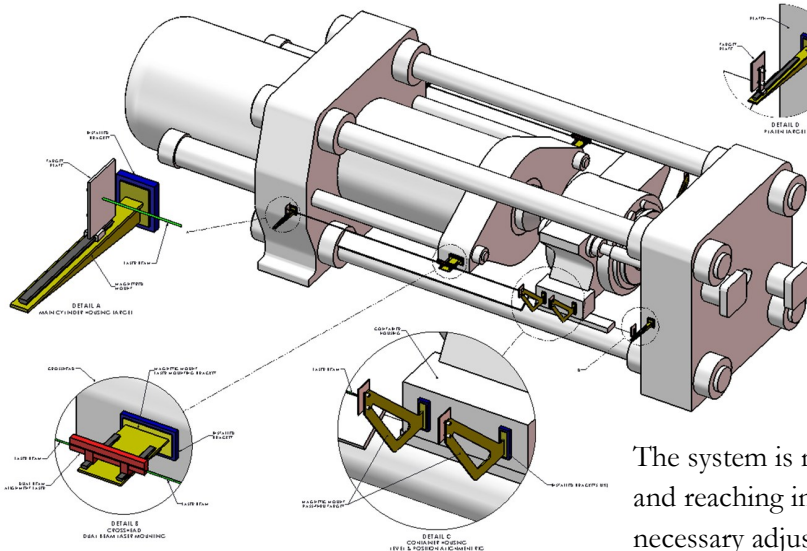


FINITE ELEMENT ANALYSIS

- Ross & Mount Bolsters are designed and engineered utilizing finite element analysis (FEA).
- Loading stresses, fatigue rates, and deflection are addressed in the engineering determinations to design and manufacture replacement components.
- We designs Bolsters to perform for greater than one million cycles, or by analysis standards, infinite life.

Laser Alignment System

Our Press Laser Alignment System makes , maintaining proper press alignment . Our system can align the press components to the press center line, not just the main ram. This will improve press performance and increase tooling life..



The system is much safer to use. Instead of taper gauges and reaching into the hot areas of the press, We make the necessary adjustments with visual laser reference targets

Patented Digital Hydraulic System

The intelligent servo-hydraulic power drive system automatically adjusts the press speed during the production cycle to the optimum power requirement. Ross & Mount, Demand flow module controls the flow rate and intelligent controlling behaviour, resulting in significantly lower power consumption than conventional hydraulic units.

- Up to 50 per cent less energy consumption
- Control accuracy significantly improved
- Drastic noise reduction less than 90 Db
- No consumption in standby mode
- No external oil cooling necessary
- Extremely dynamic movements

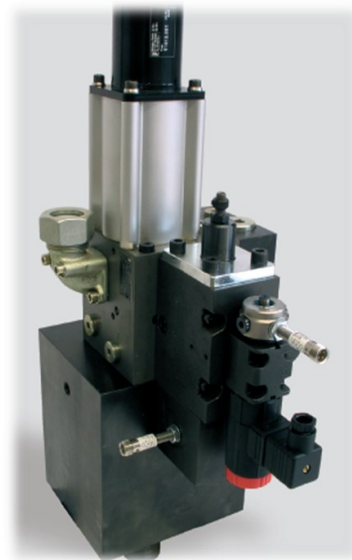


Digital Tonnage Control—Closed loop load control module for precision cure cycle of the Material



Press Hydraulic System

- Press Counter balance valve is built in, to avoid any free fall in case of power failure / control failures
- Modular Function Based hydraulic modules for ease of maintenance
- Block/Cartridge design to reduce piping – interchangeable cartridge valves
- Additional 3 micron filter on high pressure side to ensure a clean hydraulic system
- Custom mounted manifold blocks to minimize hydraulic tubing
- Leak free hydraulics for maintenance friendly and clean environ-



The Digital Servo Driven Hydraulics

The servo motor driven hydraulic unit for approaching and returning and a fixed flow rate pump for working at constant speed.

It is equipped with a non-return valve, a pressure relief valve, a decompressing valve



By displaying all press settings on a single screen, the touch screen control makes it easy to establish change, or verify set points. The Press Monitor screen lets you review actual stroke parameters and press performance while the press is in operation.

An auto set point feature lets you establish set points visually. Just jog the press to the desired position, touch the auto set point indicator, and the control automatically stores the actual press position as the new set point, eliminating the need to take measurements and enter the values.

Faster, Easier Adjustments

On most presses, making adjustments involves precise measurements, some guesswork, and several tries.

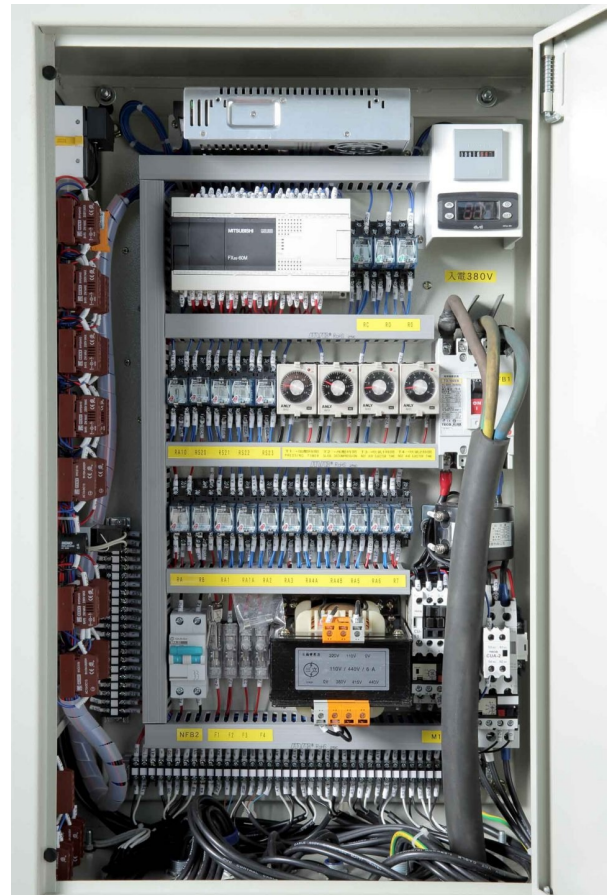
Adjustments with a touch screen control, however, are fast and easy and can be made with great ease

Precise Control

The touch screen control provides exceptionally precise control. Ram position is track by an absolute zero linear transducer, which never needs calibrating(optional) The control can be easily integrated with a precision digital control system, which enables actual position accuracies of ± 0.02 " and reversal at $\pm 4\%$ or specified tonnage. (optional)

Speeds Repeat Setups

Program stored in the control memory can be called up instantly using the Program Utilities function. If the job is an exact rerun of a prior job, the program can be run as is. If minor changes or modifications are required, the program can be quickly and easily edited for onetime use or edited and then stored for future reuse.





ROSS & MOUNT



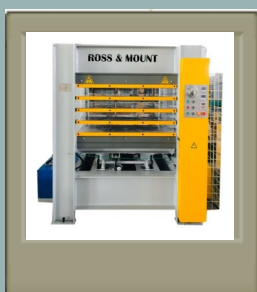
**INNOVATION POWERED
BY TECHNOLOGY ...**

ROSS & MOUNT TECHNOLOGY CENTER

At the technology center of Ross & Mount , Cologne , Germany . We bloom the innovation powered by cutting edge technology. The engineering system follows the standards in all their designs to ensure reliability at all levels of product designs .

The Ross & Mount products pass through all the extreme testing environments before reaching the equipment's and plants of the customer. Our set of proud customers prefers our products as their first choice for sub assemblies , proves our products reliability and integrity in all our relations .

Our technology team supports Valuable customers in selection of right assemblies , integration supports and Engineering to deliver products with Engineered Reliability.



**Ross & Mount Gmbh ,
53555 , Sankt Augustine ,
Cologne , Germany**

**E-mail : sales@rosmount.com
www.rosmount.com**