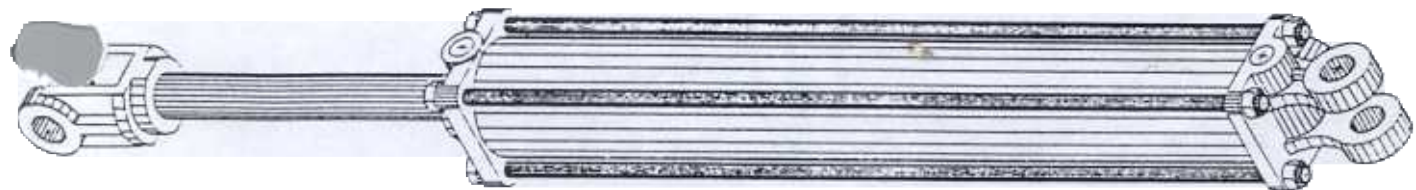
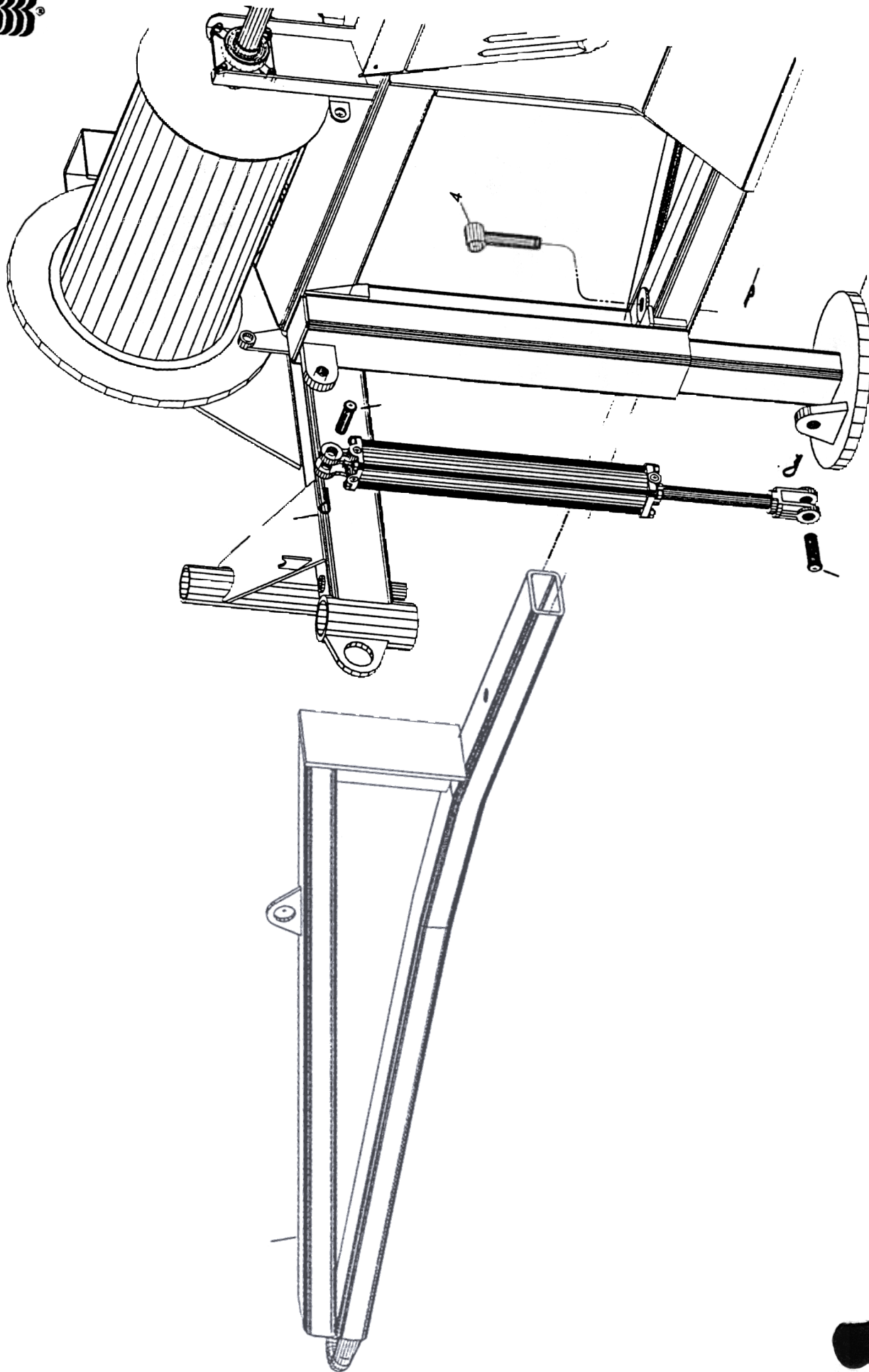


C:\ACBAG\HARDWARE

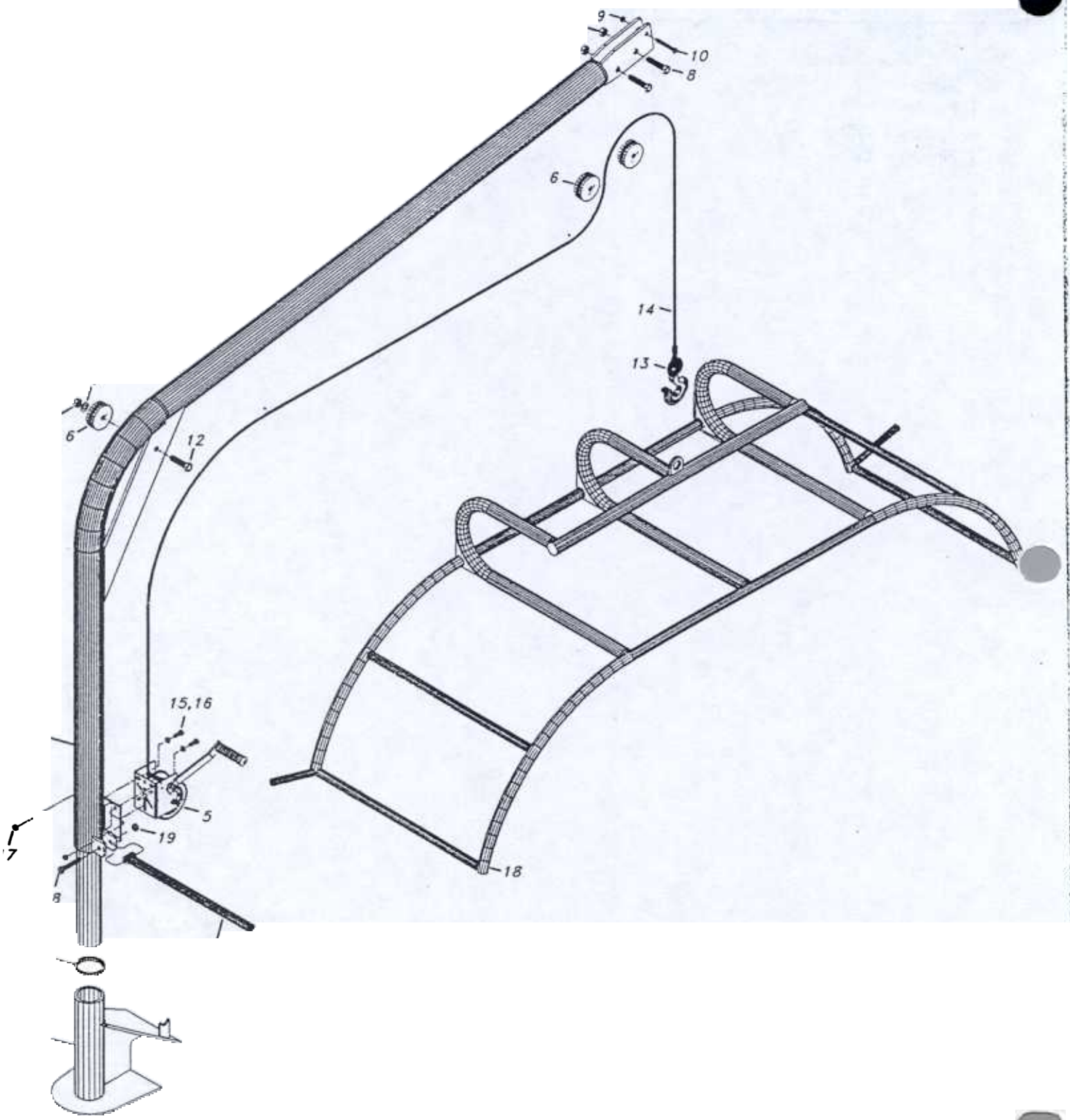
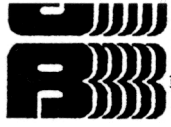




PINTLE HITCH & HYD. JACK

Date:	15SEP92	By:	<i>JD</i>
Ass'y DWG	File No.: C:\AGBAG\PINTLASY		
Bill of Mat'l	File No.: C:\AGBAG\PINTLBM		

NO	DESCRIPTION	DRAWING NO.	PART NO.	FILE NO.	BLOCK NO.
1	Pintle Hitch			B:\PINTLE	C:\AGBAG\PINTLEB
2	Hyd. Jack Pedestal			B:\JACK	c:\agbag\jackb
3	Clip			B:\CLIP	C:\AGBAG\HAIRPINB
4	Pin			B:\PINS	C:\AGBAG\PIN4B
5	Hydraulic Cylinder			B:\CYL24B	C:\AGBAG\CYL24BB
6	Pin, Hyd. Cyl.			B:\CYLTUBE	C:\AGBAG\CYLPINB



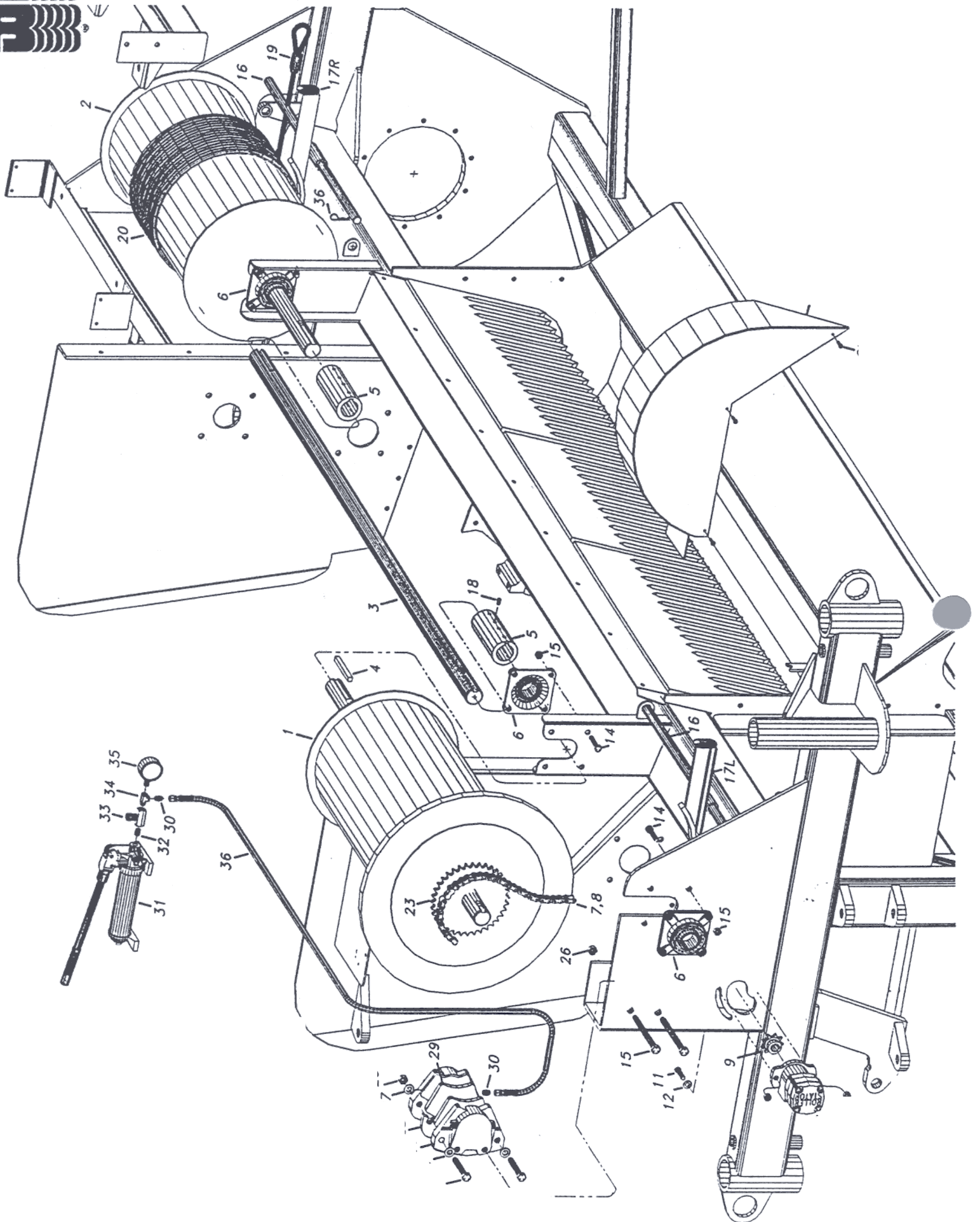
BAG BOOM ASSEMBLY

Date:	9SEP92	By:	<i>P</i>
Ass'y DWG	C:\AGBAG\BOOMASY		
Bill of Mat'l	C:\AGBAG\BOOME		

NO	DESCRIPTION	DRAWING NO.	PART NO.	FILE NO.	BLOCK NO.
	Boom	7006000		B:\BOOM	C:\AGBAG\BOOMB
2	Washer, 3" ID x 3-1/2" OD	1060039		B:\BOOMPART	C:\AGBAG\BOOMWASB
3	Bag Boom Post (Weld On)	7006008		B:\BOOMP	C:\ROTOR\BOOMP
4	Handle	4070023		B:\BOOMPART	C:\AGBAG\BOOMHANB
5	Winch	1500602		B:\WINCH	C:\AGBAG\WINCHB
6	Pully	1060036		B:\BOOMPART	C:\AGBAG\PULLYB
7	5/8" NC Hex Nyloc Nut				
8	5/8" NC Hex Cap Screw x 3"				
9	3/8" NC Hex Nyloc Nut				
10	3/8" NC Hex Cap Screw x 3"				
11	5/8" Flat Washer				
12	5/8" NC Hex Cap Screw x 2-1/2"				
13	Hook			B:\BOOMPART	C:\AGBAG\HOOKB
14	Steel Cable	1590010			
15	3/8" NC Hex Cap Screw x 1"				
16	3/8" Flat Washer				
17	3/8" NC Hex Nyloc Nut				
18	1/2" NC Hex Cap Screw x 3"				
19	1/2" NC Hex Nyloc Nut				
20	Bag Cradle			B:\CRADLE	C:\AGBAG\CRADLEB



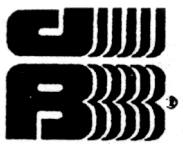
BRAKE SYSTEM



BRAKE SYSTEM

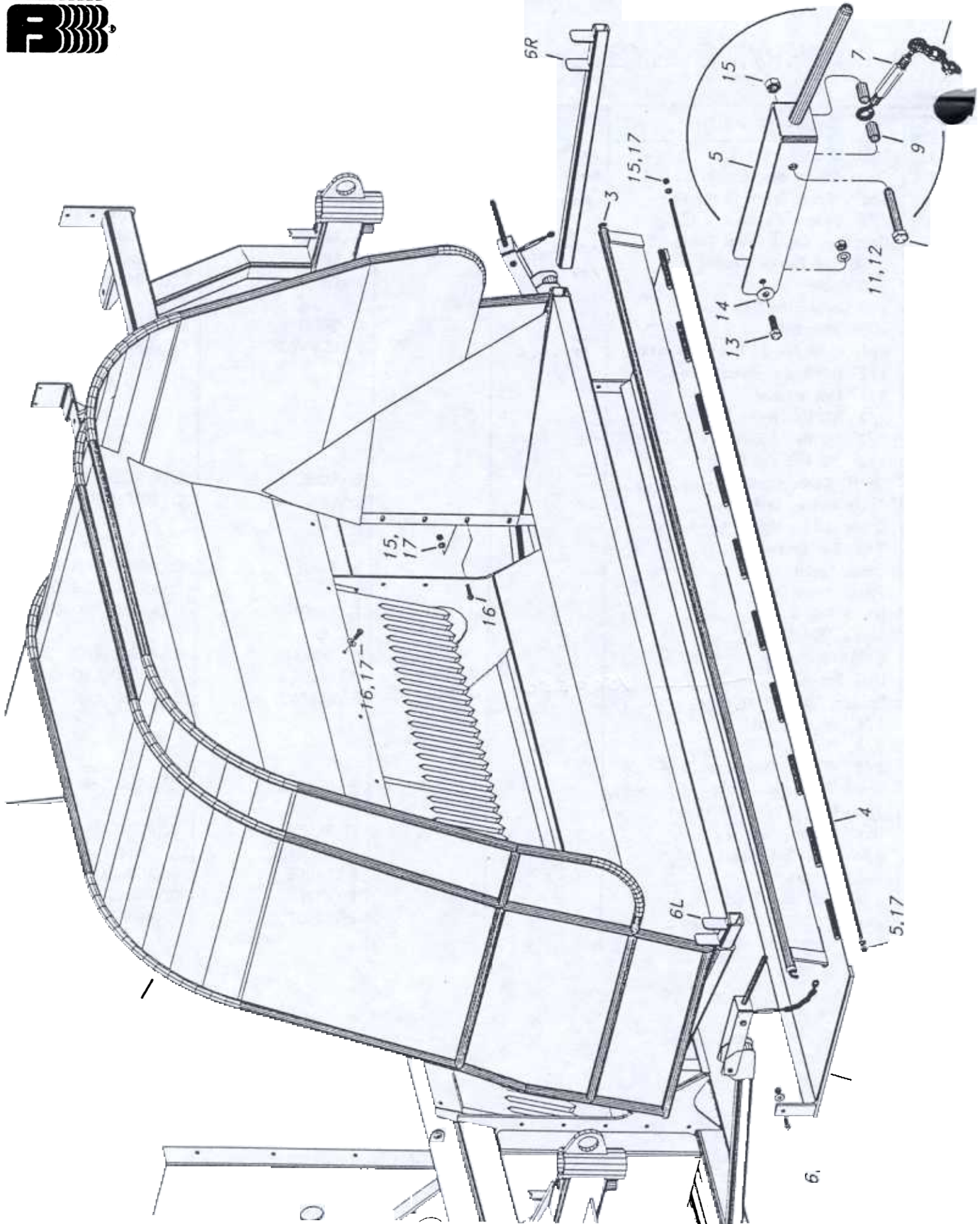
Date:	9SEP92	By:	D
Ass'y DWG	File No.: C:\AGBAG\BRAKEASY		
Bill of Mat'l	File No.: C:\AGBAG\BRAKEBM		

NO	DESCRIPTION	DRAWING NO.	PART NO.	FILE NO.	BLOCK NO.
	Cable Drum, Brake End	103006		B:\BRAKE	C:\ROTOR\BRAKEB1
2	Cable Drum, Non-Brake End	1030010		B:\BRAKE	C:\ROTOR\BRAKEB2
3	Shaft, Cable Drum Connecting	703002		B:\BRKSHFT	C:\AGBAG\BRKSHFTB
4	1/2" Square Keystock x 8" lg.			C:\AGBAG\BOLT	C:\AGBAG\KEYB
5	Coupling, Cable Drum Shaft			B:\BRAKE	C:\ROTOR\COUPL
6	2" 4-Bolt Flange Bearing	1030015		B:\BRG	C:\AGBAG\BRGB
7	#60 Chain	1510044		B:\CHAIN	C:\AGBAG\CHAIN1B,2B
8	#60 Connecting Link			"	"
9	60B6 Sprocket			B:\SPRKT	C:\AGBAG\SPRKTB
10	Hyd. Motor, Cable Rewind 101-1272	1541054		B:\REWIMOT	C:\AGBAG\REWIMOTB
11	1/2" NC Button-Head Screw x 2"				
12	1/2" Flat Washer				
13	1/2" NC Hex Nyloc Nut				
14	1/2" NC Hex Cap Screw x 2"				
15	1/2" NC Hex Nyloc Nut				
16	Shaft, Cable Guide 1030038			B:\GUIDE	C:\ROTOR\GSHAFTB
17L	Cable Guide, Left 7003005			B:\GUIDE	C:\ROTOR\GUIDEB
17R	Cable Guide, Right 7003006			"	"
18	3/8" Set Screw				
19	Cable Eyelet			B:\CABLE	C:\AGBAG\CABLEHB
20	7/16" Steel Cable			"	C:\AGBAG\CABLEOB
21	Brake Guard			B:\BRKGARD	C:\AGBAG\BRKGARF
22	Screw (Size?)				
23	60B36 Sprocket			B:\SPRKT2	C:\AGBAG\SPRKT2B
24	Mico Brake 1504046 1500650			B:\CALIPER	C:\AGBAG\CALIPERB
25	Spacer, Mico Brake 1500470			B:\BRKPAD	C:\AGBAG\BRKSPACB
26	5/8" NF Hex Nut				
27	5/8" Flat Washer				
28	5/8" NF Hex Cap Screw x 4"				
29	Brake Pad, Mico Brake 1500294			B:\BRKPAD	C:\AGBAG\BRKPADB
30	1/4" MPT x 1/4" JIC Union				
31	Brake Pump 1541231			B:\BRKPMP	C:\AGBAG\BRKPMPAS
32	1/4" MPT Pipe Nipple (Hyd)				
33	Needle Valve			B:\GAUGE	C:\AGBAG\NEEDLVB
34	1/4" Male Run T (Hyd)			B:\HYDFTG	C:\AGBAG\T-MRB
35	Gauge, 2000# 1500142			B:\GAUGE	C:\AGBAG\GAUGEB
36	Brake Line, Hose Ass'y				



INNEL

SEMBL



TUNNEL & PAN ASSEMBLIES

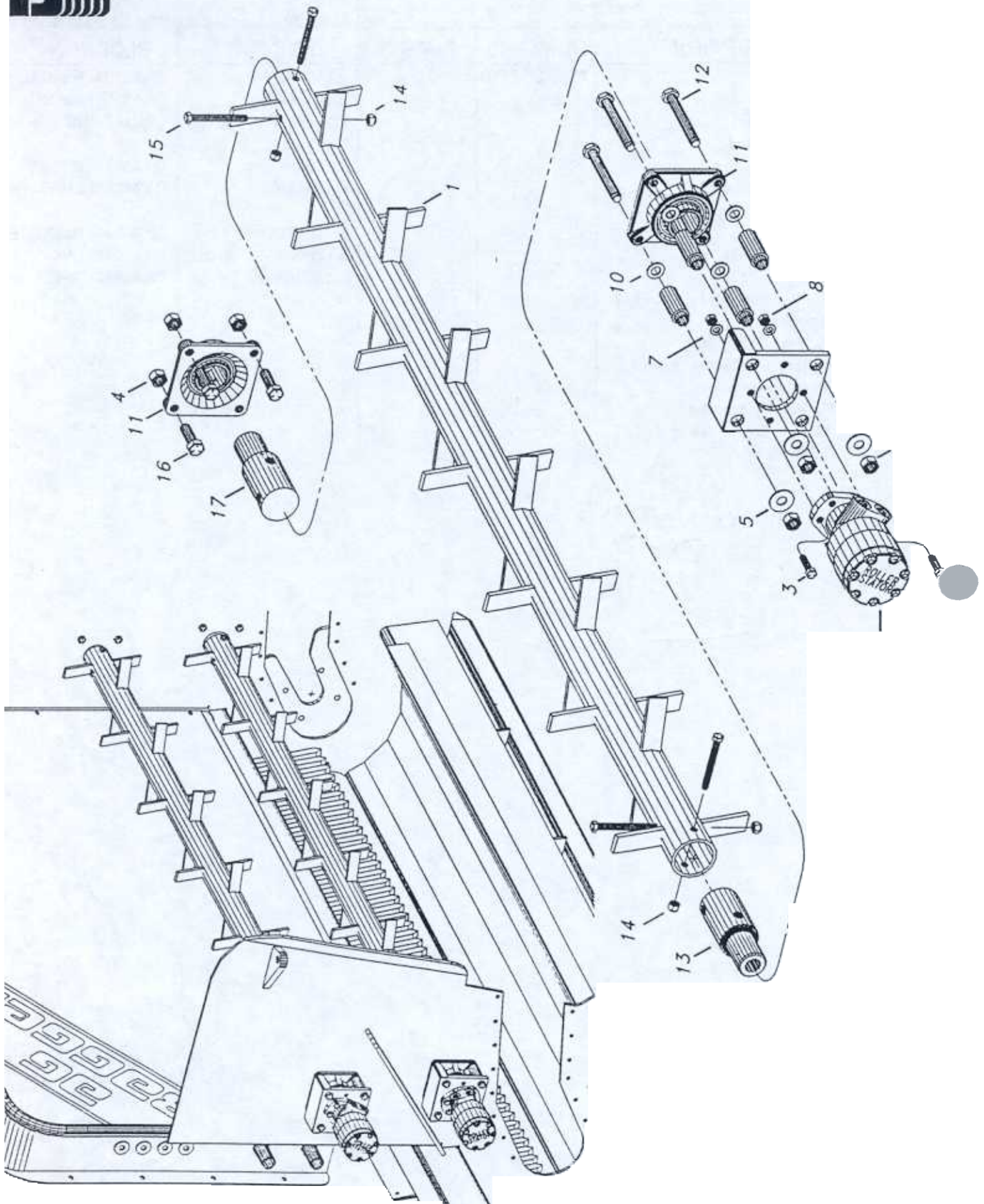
Date:	9SEP92	By:	<i>D</i>
Ass'y DWG	File No.: C:\AGBAG\TUNNLASY		
Bill of Mat'l	File No.: C:\AGBAG\TUNNLBM		

NO	DESCRIPTION	DRAWING NO.	PART NO.	FILE NO.	BLOCK NO.
	Tunnel	7000 SK T-10		B:\TUNNEL2	C:\ROTOR\TUNNELB
2	Tunnel Pan Front			B:\BAGPAN	C:\ABAG\BAGPAN1B
3	Tunnel Pan Front			B:\BAGPAN	C:\BAGPAN2B
4	Bag Pan Hinge Rod				
5	Bag Pan Lever			B:\CRANK	C:\AGBAG\CRANKB
6L	Backstop Carrier, Left \ 1090017			B:\BAKSTOP	C:\AGBAG\BAKSTOPB
6R	Backstop Carrier, Right			"	"
7	5/16 Turnbuckle			B:\TRNBUK	C:\AGBAG\TRNBUK1B,2B
8	1/4" Chain, 8 Links			B:\PINS	C:\AGBAG\LINK
9	Pipe, 1/2 x 1" lg.			C:\AGBAG\BOLT	C:\AGBAG\PIPE2B
10	1/2" NC Hex Cap Screw x 3-1/2"				
11	3/8" Lock Washer				
12	3/8" NC Hex Nylock Nut				
13	3/8" NC Hex Cap Screw x 1"				
14	3/8" Flat Washer				
15	1/2" NC Hex Nylock Nut				
16	1/2" NC Hex Cap Screw x 1-1/2"				
17	1/2" Flat Washer				

C.D Lock out sw
1500 504



7000 BEATER BAR ASSEMBLY



BEATER BAR ASSEMBLY

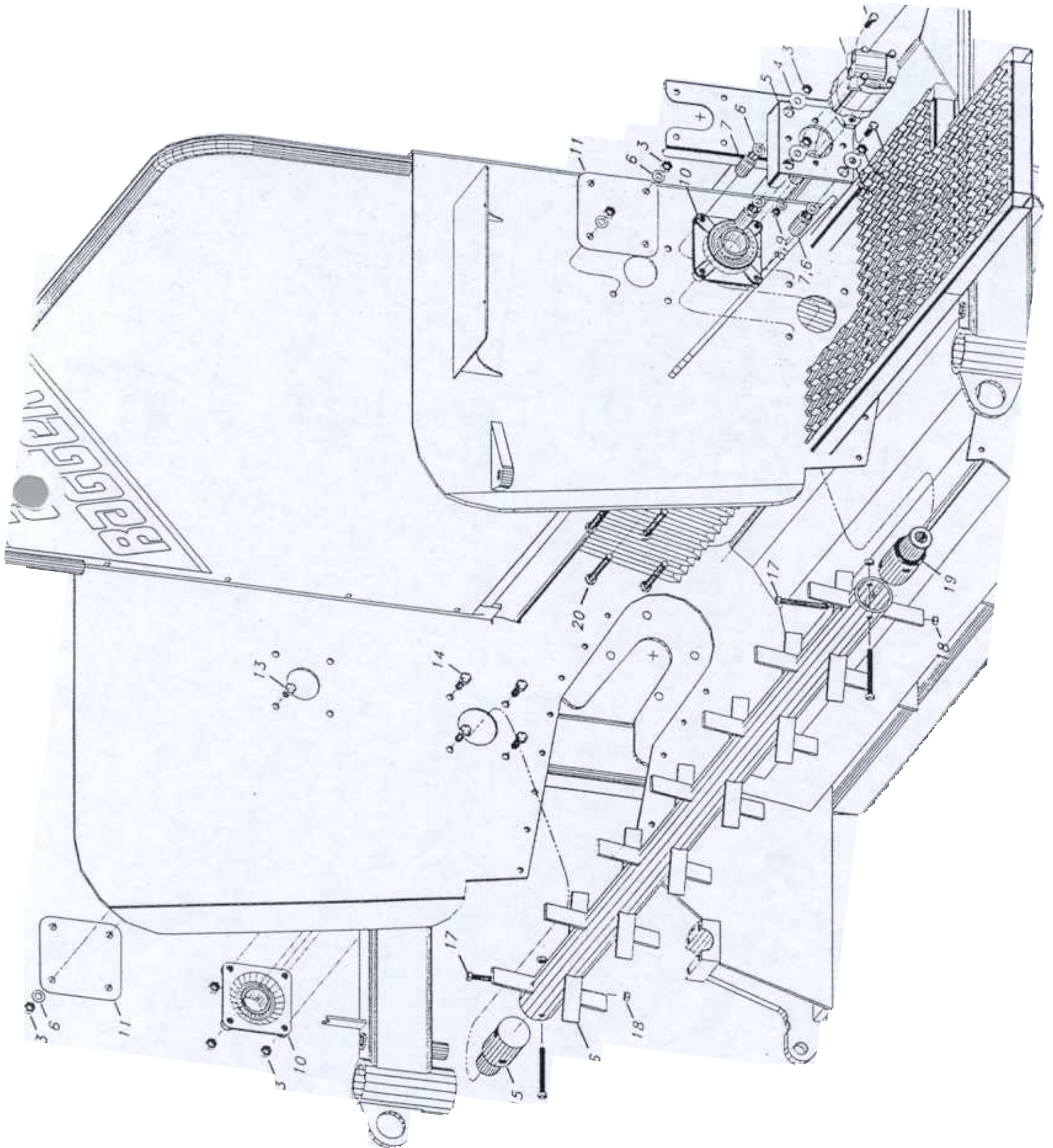
NO.	DESCRIPTION	DRAWING NO.	PART NO.
1	Beater Bar		
2	Hyd. Motor, Beater Bar		
3	1/2" NC Hex Cap Screw x 2"		
4	5/8" NC Hex Nylock Nut		
5	5/8" Flat Washer		
6	Mount Plate, Beater Bar Motor	1003-2010-000	
7	1/2" Flat Washer		
8	1/2" NC Hex Nyloc Nut		
9	Spacer	1003-2010-003	
10	Deleted		
11	2-3/16" 4 Bolt Flange Bearing		
12	5/8" NC Hex Cap Screw x 5-1/2"		
13	Coupling Shaft	901-26-156	
14	1/2" NC Hex Nyloc Nut		
15	1/2" NC Hex Cap Screw x 4-1/2"		
16	5/8" NC Hex Cap Screw x 2"		

(F4BSC203)
 Drive Side (Shared) 1020035
 Idle side. No shared 1510037
 F4BSC203

↘ Beater Bar Stub SHAFTS
 Idle 102002
 Drive 102001 splined



G 7000 BEATER BAR ASSEMBLY



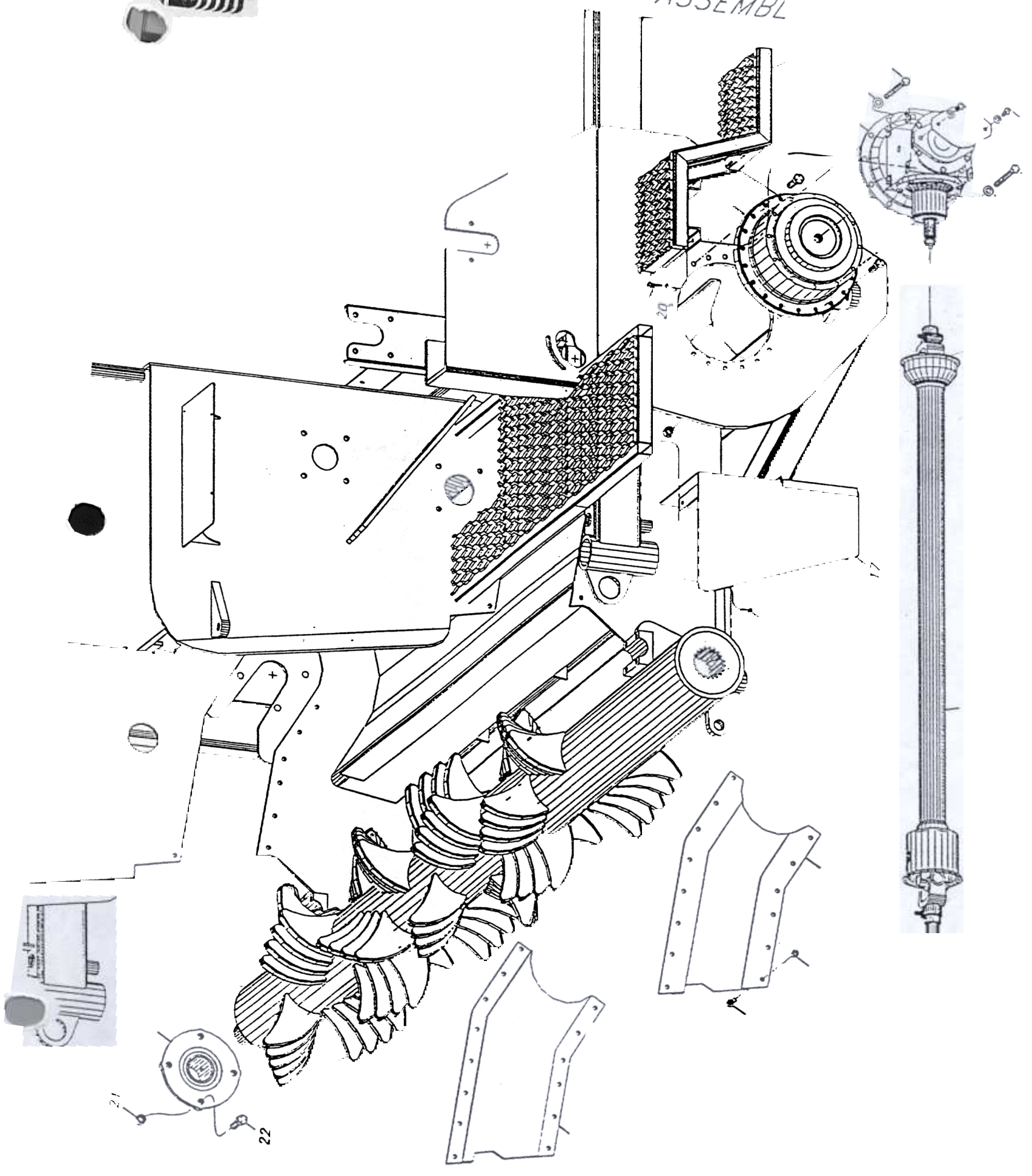
G7000 BEATER BAR ASS'Y

Date:	14 DEC 92	By:	D
Ass'y DWG	C:\AGBAG2\BEATG7A		
File No.:	C:\AGBAG2\BEATG7BM		
Bill of Mat'l	C:\AGBAG2\BEATG7BM		
File No.:	C:\AGBAG2\BEATG7BM		

NO.	DESCRIPTION	DRAWING NO.	PART NO.	FILE NO.	BLOCK NO.
1	Beater Bar Motor <i>1541284</i>			B:\BEATMOT	C:\AGBAG2\BEATMOTB
2	1/2" NC Hex Cap Screw x 2"				
3	5/8" NC Hex Nylock Nut				
4	5/8" Flat Washer				
5	Mount Plate, Beater Bar Motor	1003-2010-000		B:\MTRPL	C:\AGBAG2\MTRPLXB
6	5/8" Brass Flat Washer				
7	Spacer	1003-2010-003		B:\MTRPL	C:\AGBAG\MTRSPB
8	1/2" NC Hex Nylock Nut				
9	1/2" Flat Washer				
10	2-3/16" 4 Bolt Flange Bearing			B:\BRG	C:\AGBAG\BRGB
11	Cover Plate	7000607-0303-000		B:\BEATCOV	C:\AGBAG2\BEATCOVB
12	Deleted				
13	5/8" NC Hex Cap Screw x 1-1/4"				
14	5/8" NC Hex Cap Screw x 2"				
15	Coupling Shaft, Idle End	901-26-156		B:\COUPL	C:\AGBAG\COUPLB
16	Beater Bar	<i>7002000</i>		B:\BEATER	C:\AGBAG\BEATERB
17	1/2" NC Hex Cap Screw x 4-1/2"				
18	1/2" NC Hex Nylock Nut				
19	Coupling Shaft, Drive End <i>1020011</i>			B:\COUPL	C:\AGBAG\COUPLB
20	5/8" NC Hex Cap Screw x 5-1/2"				



G7076 ROTOR ASSEMBLY





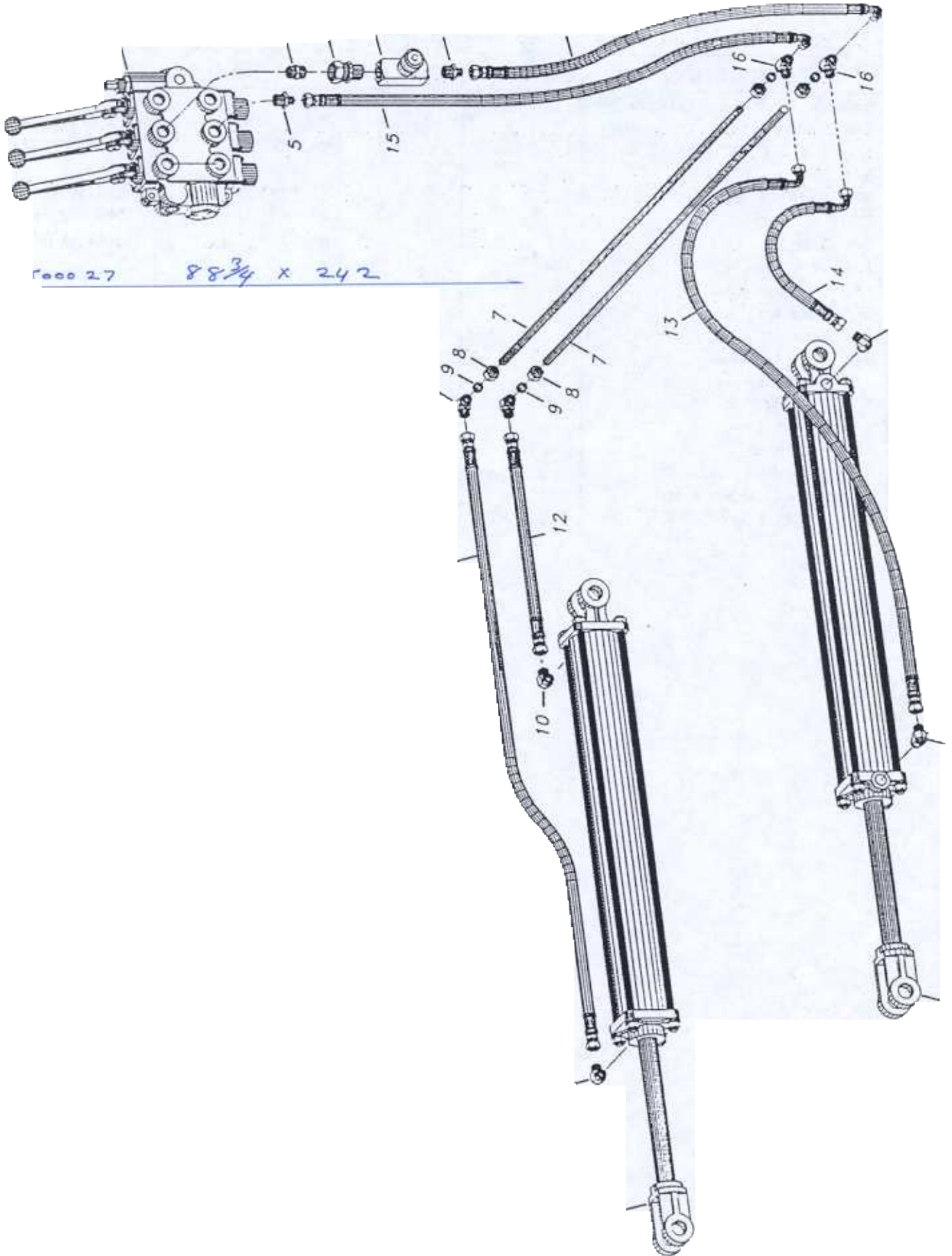
G7000

8 1/4

D IABL HYD LIF

Labelk

SYSTEM



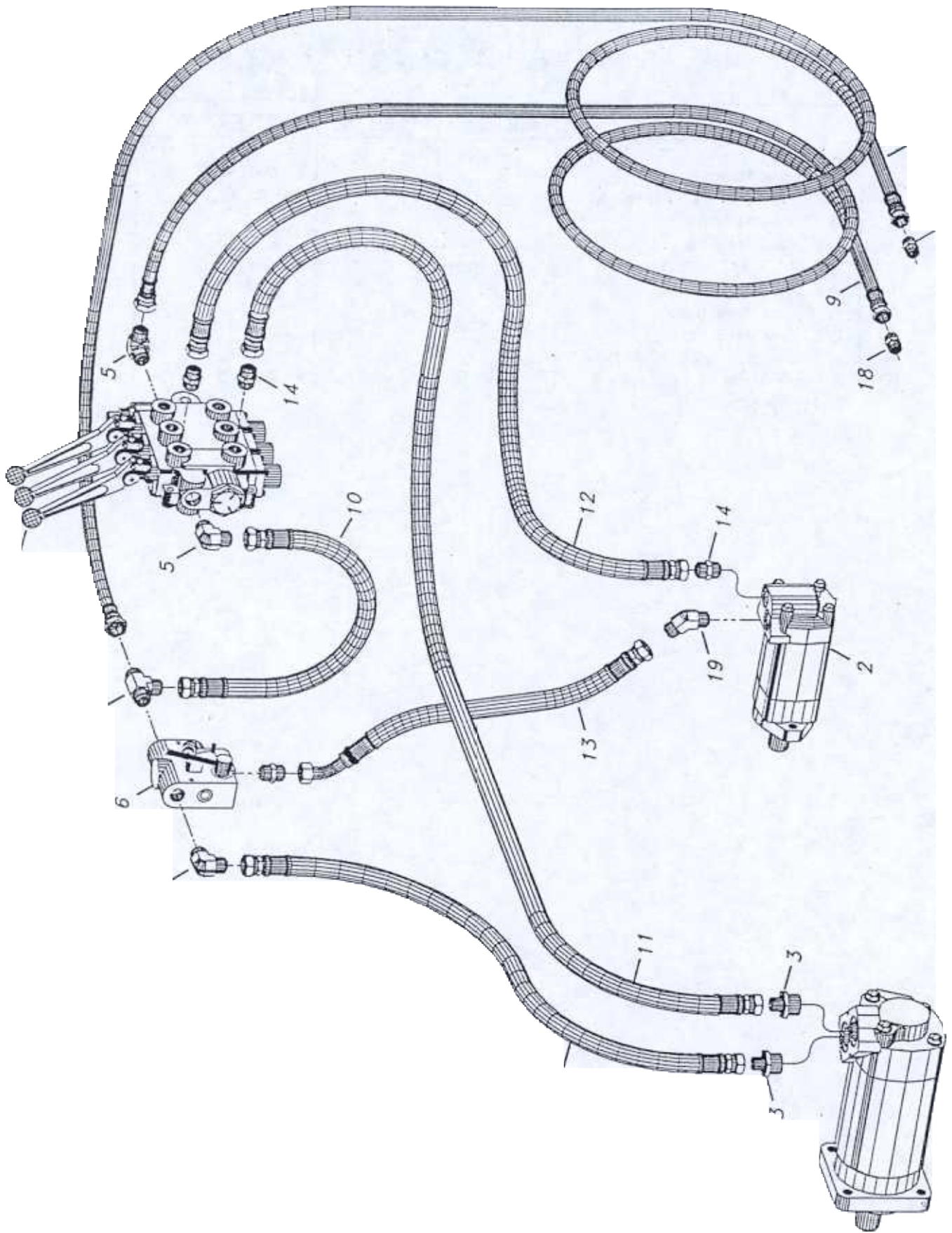
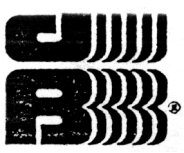
1000 27

8 8 3/4 x 242

G7000 FEED TABLE HYD. LIFT

Date:	11 DEC 92	By:	<i>P</i>
Ass'y DWG	C:\AGBAG2\HYDASY-		
File No.:	C:\AGBAG2\HYDASYB7		
Bill of Mat'l	C:\AGBAG2\HYDASYB7		
File No.:	C:\AGBAG2\HYDASYB7		

NO.	DESCRIPTION	DRAWING NO.	PART NO.	FILE NO.	BLOCK NO.
1	3-Gang Hyd. Valve			B:\VALVE-3	C:\AGBAG\VALVE-3B
2	5/8" MPT x 1/2" JIC Adaptor			B:\HYDFTG	C:\AGBAG\ADAPT-MB
3	1/2" MPT x 1/2" JIC Swivel Adapt.			-----	C:\AGBAG\ADAPT-SB
4	1/2" Needle Valve			B:\GAUGE	C:\AGBAG\NEEDLVB
5	1/2" MPT x 3/8" JIC Adaptor			B:\HYDFTG3	C:\AGBAG\ADAPT-3B
6	3/8" Hose Ass'y No.				
7	3/8" Hyd. Tubing				
8	3/8" Nut			B:\H"DFTG3	C:\AGBAG\FNUTB
9	3/8" Ferral			B:\H"DFTG3	C:\AGBAG\FERRALB
10	3/8" JIC x 3/8" JIC "L"			B:\H"DFTG2	C:\AGBAG\EL-MMB
	3/8" Hose Ass'y No.				
12	3/8" Hose Ass'y No.				
13	3/8" Hose Ass'y No.				
14	3/8" Hose Ass'y No.				
15	3/8" Hose Ass'y No.				
16	3/8" JIC "T"			B:\HYDFTG	C:\AGBAG\TEE-MRB
17	Hyd. Cylinder, 24"			C:\CYL24B	C:\AGBAG\CYL24BB



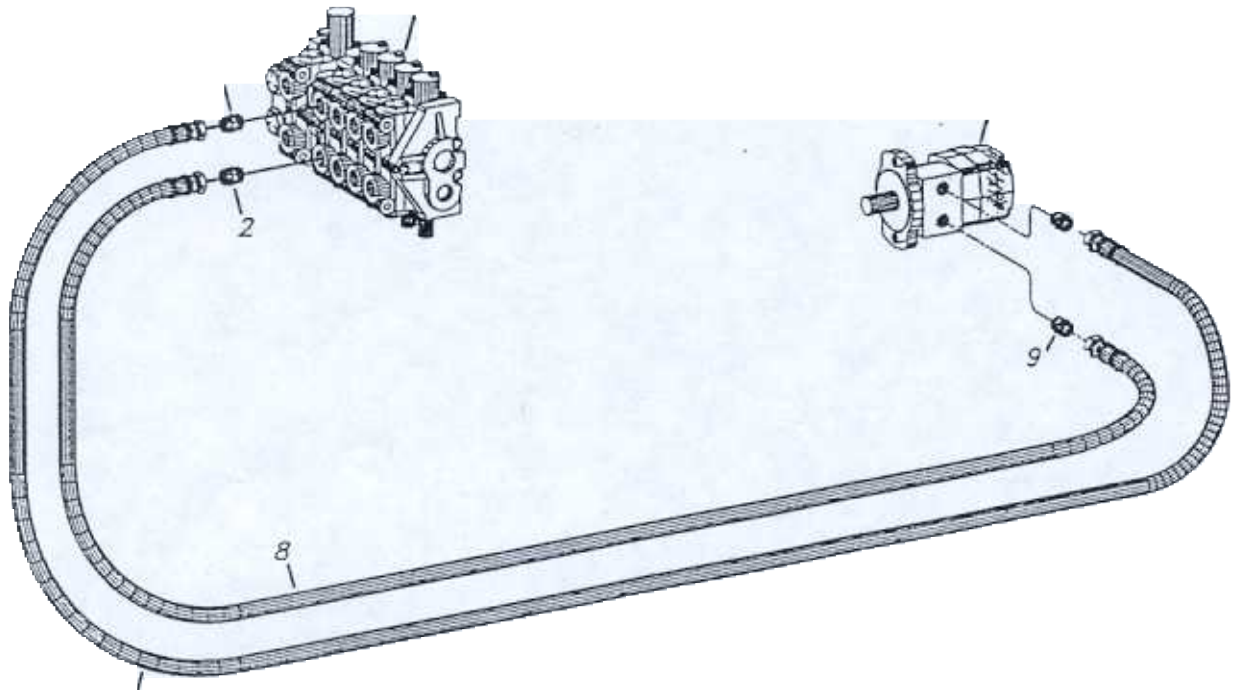
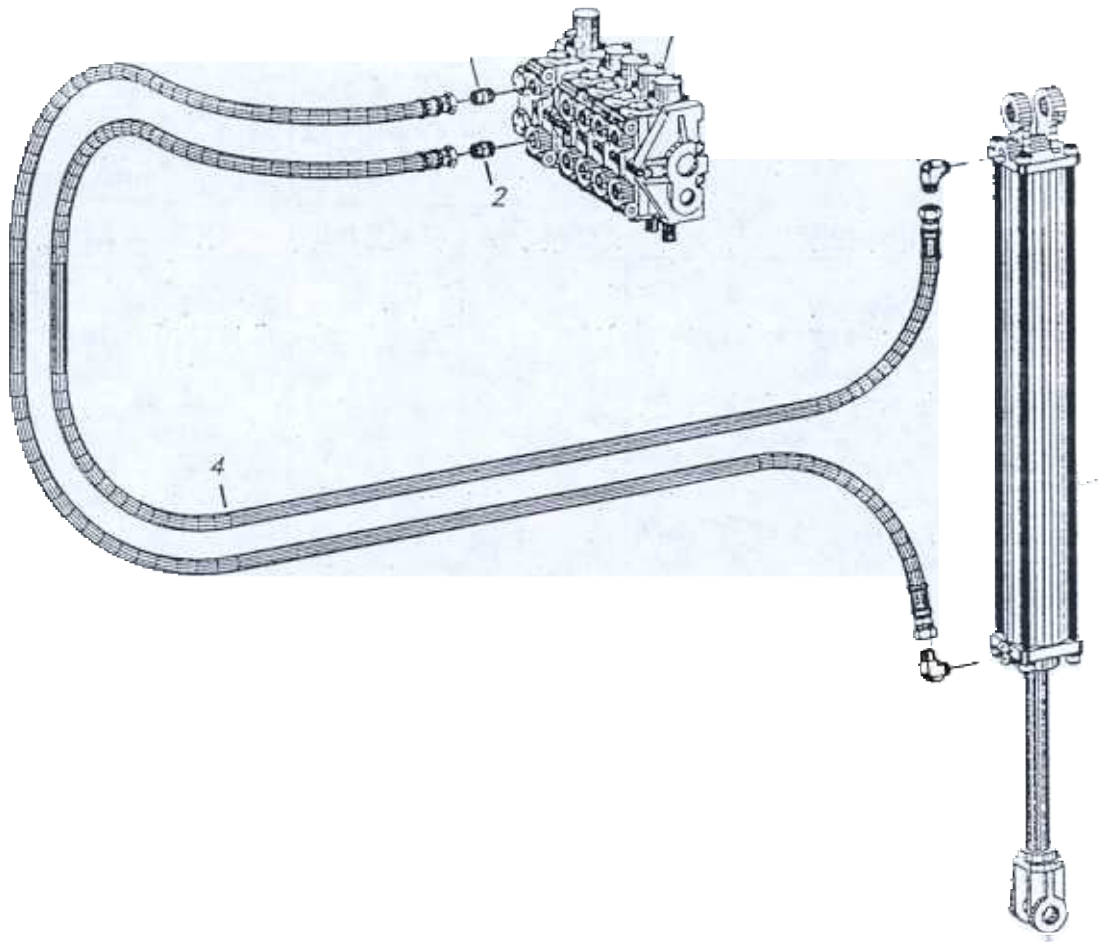
G7000 HYD. MOTORS SYSTEM

Date:	29 NOV 92	By:	<i>P</i>
Ass'y DWG	C:\AGBAG2\HYDASY-6		
File No.:	C:\AGBAG2\HYDASYB6		
Bill of Mat'l	C:\AGBAG2\HYDASYB6		
File No.:	C:\AGBAG2\HYDASYB6		

NO.	DESCRIPTION	DRAWING NO.	PART NO.	FILE NO.	BLOCK NO.
1	Hydraulic Motor (1/2" port) 1540916			B:\FTMOT	C:\AGBAG\ROTOR\FTMOTR
2	Beater Bar Motor			B:\BEATMOT	C:\AGBAG2\BEATMOTB
3	1" MPT x 3/4" JIC Adaptor			B:\HYDFTG3	C:\AGBAG\ADAAPT-3B
4	3/4" Hose Ass'y NO.				
5	MPT x 3/4" JIC 90 "L"			B:\HYDFTG2	C:\AGBAG\EL-MMB
6	Flow Control Valve			B:\FLOWV	C:\AGBAG2\FLOWVB
7	3/4" Male Tee			B:\HYDFTG	C:\AAG8AAG\TEE-MRB
8	1/2" Hose Ass'y No.				
9	1/2" Hose Ass'y No.				
10	3/4" Hose Ass'y No.				
11	3/4" Hose Ass'y No.				
12	3/4" Hose Ass'y No.				
13	3/4" Hose Ass'y No.				
14	5/8" MPT x 5/8 JIC Adaptor			B:\HYDFTG	C:\AGBAG\ADAPT-MB
15	3-Gang Hyd. Valve			B:\VALVE-3	C:\AGBAG2\VALVE-3B
16					
17	1/2" Male Quick-connect				
18	1/2" Female Quick-connect				
19	5/8" O-ring x 5/8 JIC 45"L"			B:\HYDFTG2	C:\AGBAG2\EL-45MB



HYD IF JAK & HYD CABL REWIND



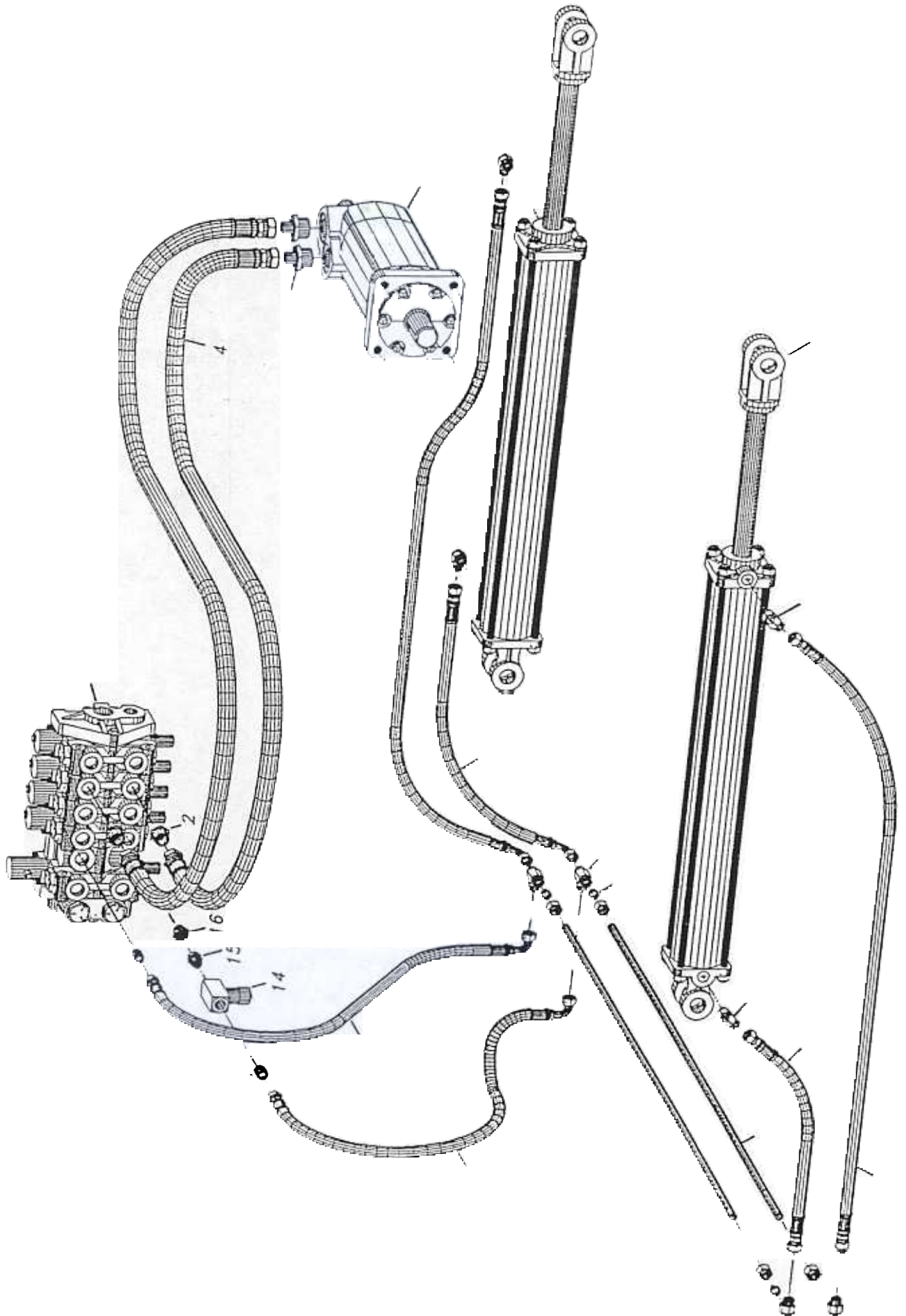
HYD. LIFT JACK & CABLE REWIND

Date: 19OCT92	By: <i>JD</i>
Ass'y DWG	
File No.: C:\ROTOR\HYDASY-5	
Bill of Mat'l	
File No.: C:\ROTOR\HYDASYB5	

NO.	DESCRIPTION	DRAWING NO.	PART NO.	FILE NO.	BLOCK NO.
1	Hyd. Valve Assembly			B:\VALVE-2	C:\AGBAG\VALVE-2B
2	5/8" O-ring x 1/2" JIC Apaptor			B:\HYDFTG	C:\AGBAG\ADAPT-MB
3	1/2" Hose Ass'y No.				
4	1/2" Hose Ass'y No.				
5	1/2" JIC x 1/2" JIC "L" Modify			B:\HYDFTG2	C:\AGBAG\EL-MMB
6	Hyd. Cylinder, 24"			B:\CYL24B	C:\AGBAG\CYL24BB
7	1/2" Hose Ass'y No.				
8	1/2" Hose Ass'y No.				
9	1/2" O-ring x 1/2" JIC Adaptor			B:\HYDFTG	C:\AGBAG\ADAPT-MB
10	Hydraulic Motor <i>Cable Rewind</i> <i>101-1272</i>			B:\REWIMOT	C:\AGBAG\REWIMOTB



FEED TABLE HYDRAULIC SYSTEM



7000 FEED TABLE HYD. SYSTEM

Date:	19OCT92	By:	<i>P</i>
Ass'y DWG	C:\ROTOR\HYDASY-4		
File No.:	C:\ROTOR\HYDASYB4		
Bill of Mat'l	C:\ROTOR\HYDASYB4		
File No.:	C:\ROTOR\HYDASYB4		

NO.	DESCRIPTION	DRAWING NO.	PART NO.	FILE NO.	BLOCK NO.
2	Hyd. Valve Assembly			B:\VALVE-2	C:\AGBAG\VALVE-2B
3	5/8" O-ring x 5/8" JIC Adptor			C:\AGBAG\HYDFTG	C:\AGBAG\ADAPT-MB
4	3/4" Hose Ass'y No.				
5	3/4" Hose Ass'y No.				
6	1" MPT x 3/4" JIC Adaptor			B:\HYDFTG3	C:\AGBAG\ADAPT-3B
7	Hydraulic Motor 110-106?	1540914		B:\FTMOT	C:\ROTOR\FTMOTB
8	Hyd. Cylinder, 24"			B:\CYL24B	C:\AGBAG\CYL24BB
9	1/2" MPT x 1/2" JIC 90 "L" Modify			B:\HYDFTG2	C:\AGBAG\EL-MMB
10	1/2" Hose Ass'y No.				
11	1/2" Hose Ass'y No.				
12	1/2" Hose Ass'y No.				
13	1/2" MPT x 1/2" JIC Adaptor			B:\HYDFTG	C:\AGBAG\ADAPT-MB
14	1/2" Needle Valve 1541123	N 8005		B:\GAUGE	C:\AGBAG\NEEDLVB
15	1/2" FJIC x 1/2 MPT Swivel Union			-----	C:\AGBAG\ADAPT-SB
16	5/8" O-ring x 1/2" JIC Adaptor			B:\HYDFTG	C:\AGBAG\ADAPT-MB
17	1/2" Hyd. Tubing				
18	1/2" Nut			B:\HYDFTG3	C:\AGBAG\FNUTB
19	1/2" Ferral			B:\HYDFTG3	C:\AGBAG\FERRALB
20	1/2" JIC x 1/2" JIC "L"			B:\HYDFTG2	C:\AGBAG\EL-MMB
21	1/2" Hose Ass'y No.				
22	1/2" Hose Ass'y No.				
23	1/2" JIC Male Run "T"			B:\HYDFTG	C:\AGBAG\TEE-MRB

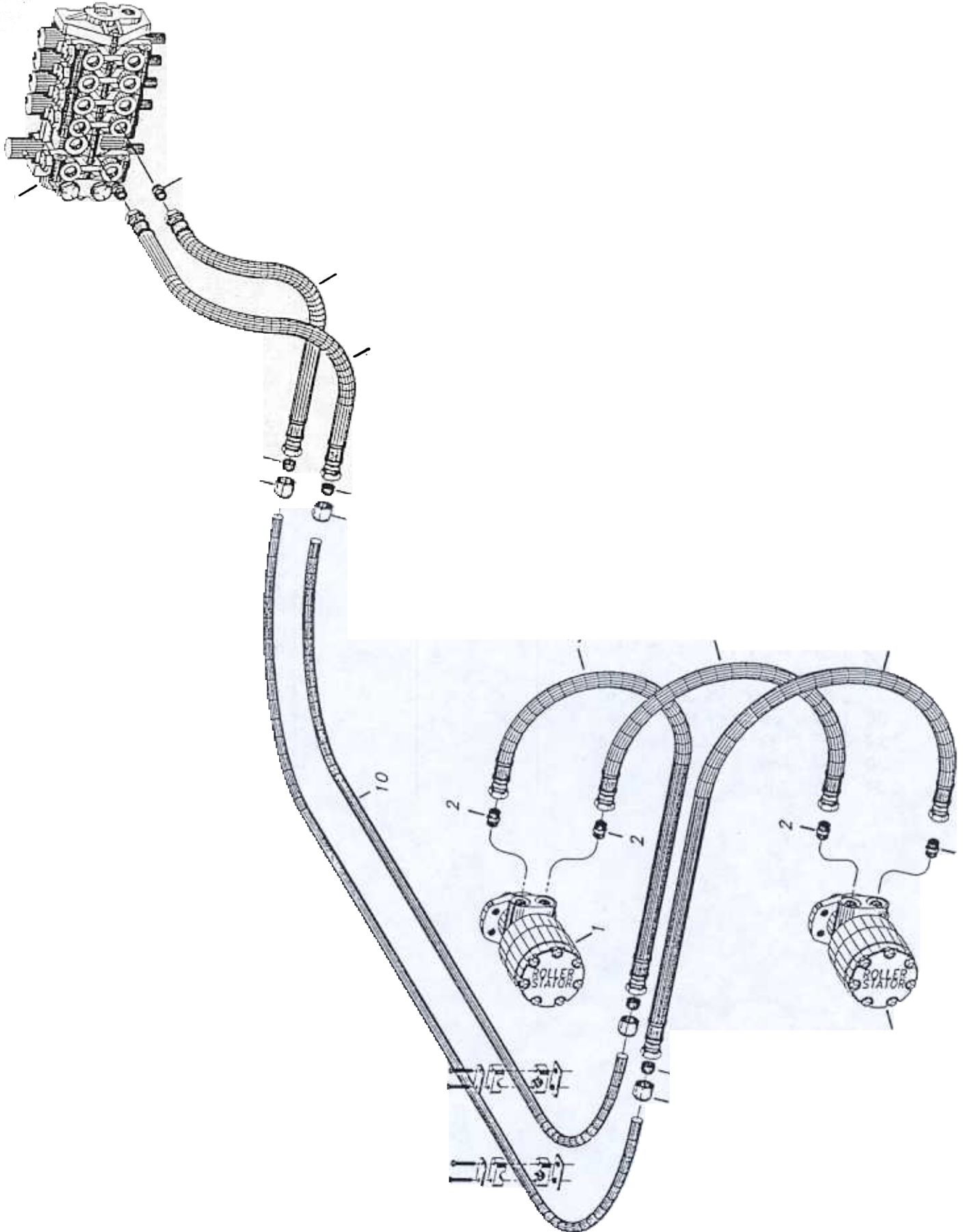
7000 BEATER BAR HYD. SYSTEM

Date:	19OCT92	By:	<i>D</i>
Ass'y DWG			
File No.:	C:\ROTOR\HYDASY-3		
Bill of Mat'l			
File No.:	C:\ROTOR\HYDASYB3		

NO.	DESCRIPTION	DRAWING NO.	PART NO.	FILE NO.	BLOCK NO.
1	Hydraulic Motor <i>RE 32040500</i>	<i>1540935</i>		B:\ROTMOT	C:\AGBAG\ROTMOTB
2	5/8 O-ring x 5/8 JIC Adaptor			B:\HYDFTG	C:\AGBAG\ADAPT-MB
3	3/4" Hose Ass'y No.				
4	3/4" Hose Ass'y No.				
5	3/4" Hose Ass'y No.				
6	3/4" Ferral			B:\HYDFTG3	C:\AGBAG\FERRALB
7	3/4" Nut			B:\HYDFTG3	C:\AGBAG\FNUTB
8	3/4" Hyd. Tubing Mount			B:\HYDFTG5	C:\AGBAG\TMNT-1B,2B,
9	3/4" Hyd. Tubing				
10	3/4" Hyd. Tubing				
11	3/4" Hose Ass'y No.				
12	3/4" Hose Ass'y No.				
13	Hyd. Valve Assembly			B:\VALVE-2	C:\AGBAG\VALVE-2B

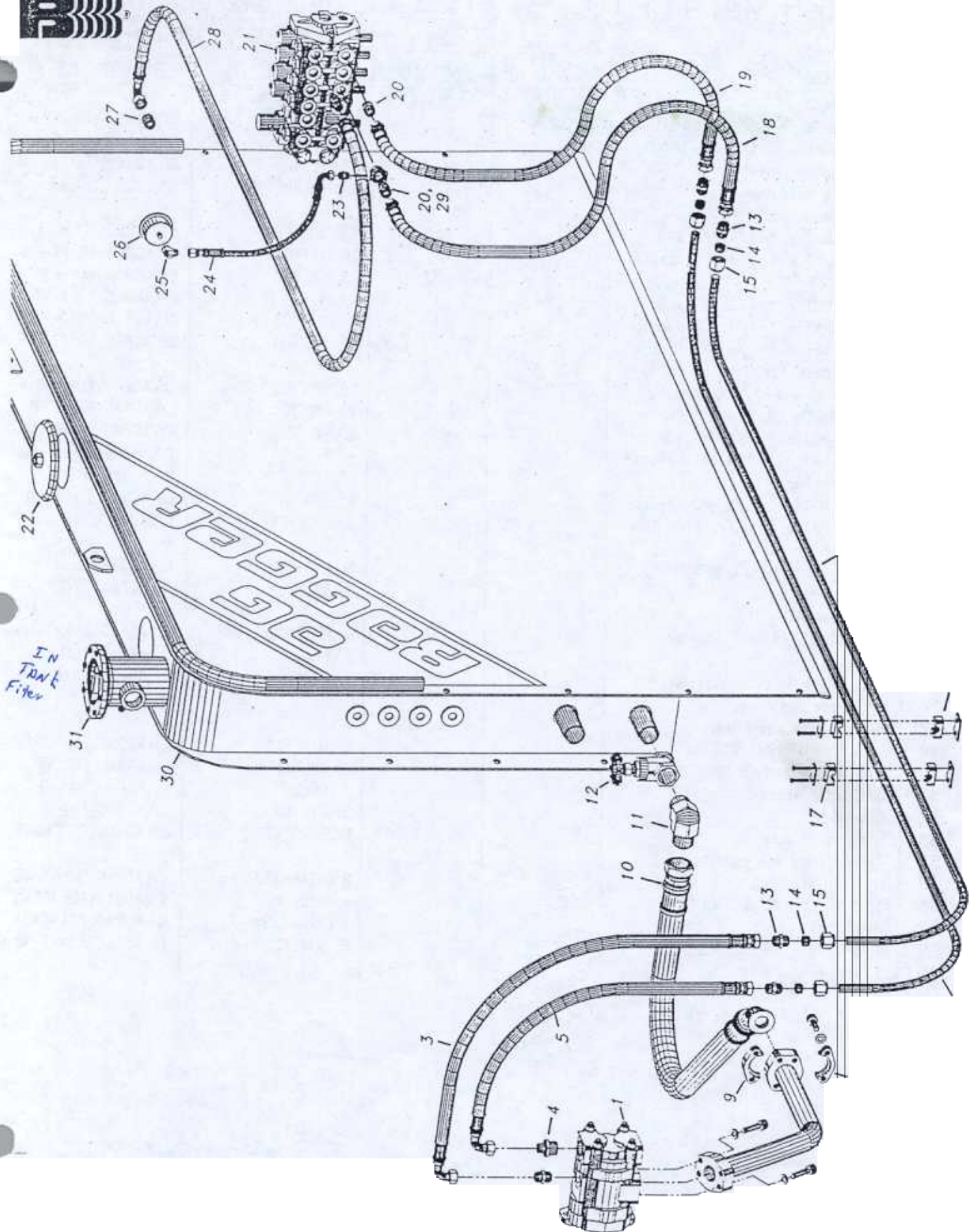


BEATER BAR HYDRAULIC SYSTEM





7000 SECONDARY HYDRAULIC SYSTEM

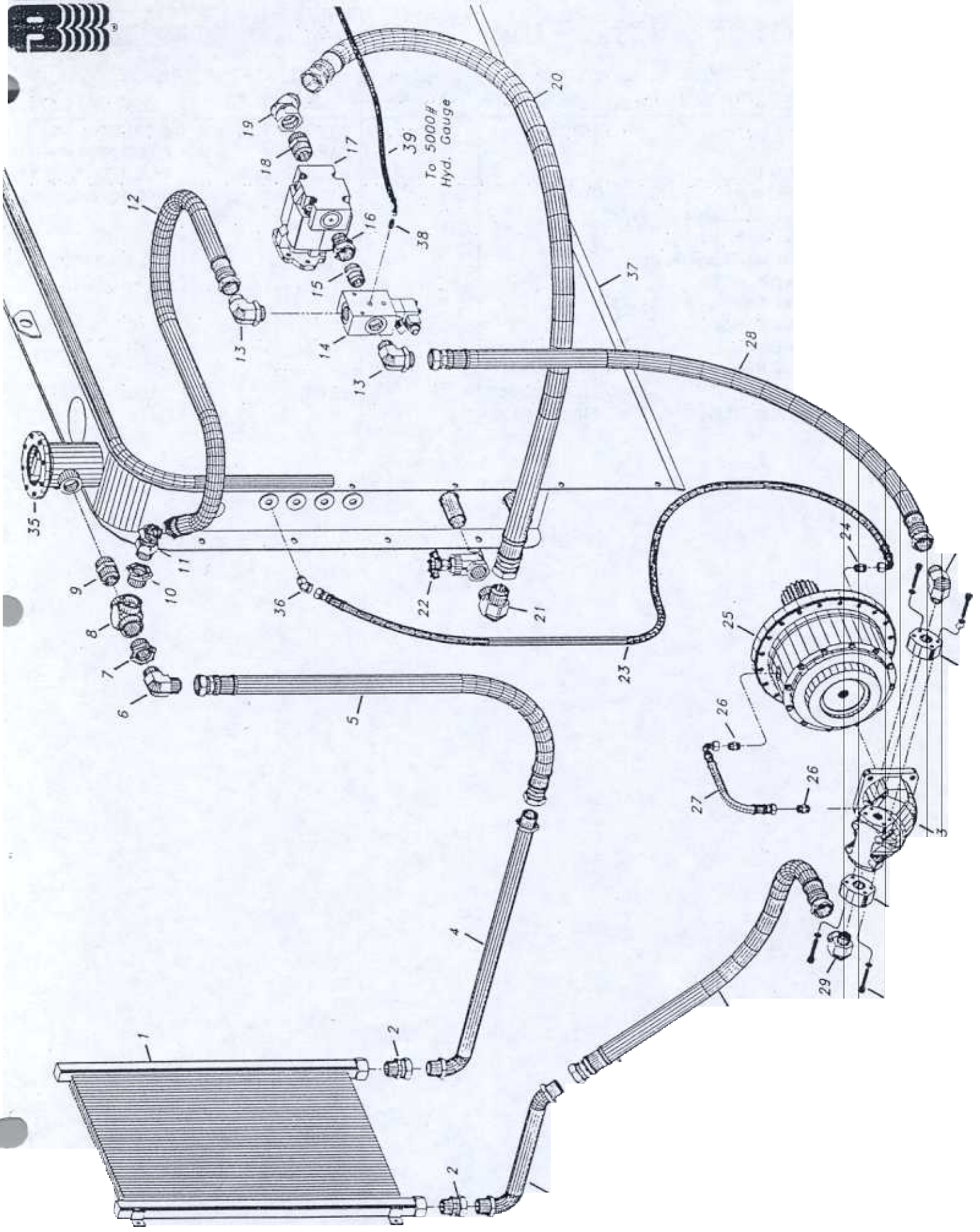


7000 SECONDARY HYD. SYSTEM

Date:	9OCT92	By:	<i>P</i>
Ass'y DWG	File No.: C:\ROTOR\HYDASY-2		
Bill of Mat'l	File No.: C:\ROTOR\HYDASYB		

NO.	DESCRIPTION	DRAWING NO.	PART NO.	FILE NO.	BLOCK NO.
1	Hydraulic Pump <i>1541019</i>			B:\HYDPMP2	C:\ROTOR\HYDPMP2B
2	3/4 MPT x 3/4 JIC Adaptor			B:\HYDFTG	C:\AGBAG\ADAPT-MB
3	3/4 Hose Ass'y No.				
4	1" MPT x 3/4 JIC Adaptor			B:\HYDFTG3	C:\AGBAG\ADAPT-3B
5	3/4 Hose Ass'y No.				
6	3/8 NCT Allen Head x 2-1/2"			B:\CYLTUBE	C:\AGBAG\ALLENHB
7	3/8 Lock Washer			C:\AGBAG\BOLT	C:\AGBAG\WASHB
8	Hyd. Line Weldment			B:\HYDLINE	C:\AGBAG\LINE3B
9	Split Flange			B:\HYDLINE	C:\AGBAG\SPT-FLGB
10	1-1/2 Hose Ass'y No.				
11	1-1/2 MPT x 1-1/2 JIC 90 "L"			C:\AGBAG\HYDFTG2	C:\AGBAG\EL-MMB
12	1-1/2 Gate Valve			B:\GVALVE	C:\AGBAG\GVALVEB
13	3/4 JIC x 3/4 JIC Union			B:\HYDFTG	C:\AGBAG\ADAPT-MB
14	3/4 Ferral			B:\HYDFTG3	C:\AGBAG\FERRALB
15	3/4 Nut			B:\HYDFTG3	C:\AGBAG\FNUTB
16	3/4 Hyd. Tubing				
17	3/4 Hyd. Tubing Mount			B:\AGBAG\HYDFTG5	C:\AGBAG\TMNT-1B,2B,
18	3/4 Hose Ass'y No.				
19	3/4 Hose Ass'y No.				
20	5/8 MPT x 5/8 JIC Adaptor			B:\HYDFTG	C:\AGBAG\ADAPT-MP
21	Hyd. Valve Assembly			B:\VALVE-2	C:\AGBAG\VALVE-1
22	Lid, Hyd. Tank			B:\HTANKASY	C:\AGBAG\TANKLIC.
23	1/4 MPT x 1/4 JIC Adaptor			B:\HYDFTG	C:\AGBAG\ADAPT-MB
24	1/4 Hose Ass'y No.				
25	1/4 FPT x 1/4 JIC 90 "L"			C:\AGBAG\HYDFTG2	C:\AGBAG\EL-FMB
26	5000# Hyd. Gauge <i>1500147</i>			B:\GAUGE	C:\AGBAG\GAUGE2B
27	1/2 MPT x 5/8 JIC Adaptor			B:\HYDFTG	C:\AGBAG\ADAPT-MB
28	3/4 Hose Ass'y No.				
29	1" MPT x 3/4 FJIC (Modified)			B:\HYDFTG3	C:\AGBAG\ADAPT-2B
30	Hyd. Tank			B:\HTANKASY	C:\AGBAG\HTANKASB
31	Hyd. Oil Filter <i>1540170</i>			"	"

7000 PRIMARY HYDRAULIC SYSTEM



7000 PRIMARY HYD. SYSTEM

60CT92

D

Ass'y DWG

File No.: C:\ROTOR\HYDASY

Bill of Mat'l

File No.: C:\ROTOR\HYDASYB1

NO.	DESCRIPTION	DRAWING NO.	PART NO.	FILE NO.	BLOCK NO.
2	OIL COOLER 1540078	<i>m-35</i>		B:\RAD	C:\ROTOR\OILCOOLB
3	1-1/4 MPT x 1-1/4 JIC SWIVEL			-----	C:\AGBAG\ADAPT-SB
4	Hyd. Line Weldment			B:\HYDLINE	C:\AGBAG\LINE2B
5	Hyd. Line Weldment			B:\HYDLINE	C:\AGBAG\LINE1
6	1-1/4 Hose Ass'y No.			B:\HYDFTG2	C:\AGBAG\EL-MMB
7	1-1/4 MPT x 1-1/4 JIC "L"			B:\HYDFTG3	C:\AGBAG\ADAPT-2B
8	1-1/2 MPT x 1-1/4 FPT Adaptor			B:\HYDFTG3	C:\AGBAG\TEE-F2B
9	1-1/2 FPT "T"			B:\HYDFTG	C:\AGBAG\ADAPT-MB
10	1-1/2 MPT x 1-1/4 FPT Adaptor			B:\HYDFTG3	C:\AGBAG\ADAPT-2B
11	1-1/4 MPT x 1-1/4 JIC 45 Swiv.			B:\HYDFTG4	C:\AGBAG\ADAP-45B
12	1-1/4 Hose Ass'y No.				
13	1-1/4 JIC x 1-1/4 O Ring "L"			B:\HYDFTG2	C:\AGBAG\EL-MOB
14	Hydraulic/Electric Valve			B:\HYDFTG4	C:\AGBAG\VALVE-B
15	1-1/4 MPT x 1-1/4 JIC Adaptor			B:\HYDFTG	C:\AGBAG\ADAPT-MB
16	1-1/4 MPT x 1-1/4 JIC Swiv. Adap			-----	C:\AGBAG\ADAPT-SB
17	Hydraulic Pump			B:\HYDPMP	C:\AGBAG\HYDPMPB
18	1-1/2 MPT x 1-1/2 JIC Adaptor			B:\HYDFTG	C:\AGBAG\ADAPT-MB
19	1-1/2 FPT x 1-1/2 JIC 45 Swiv.			B:\HYDFTG4	C:\AGBAG\ADAP-45B
20	1-1/2 Hose Ass'y No.				
21	1-1/2 JIC x 1-1/2 MPT "L"			B:\HYDFTG2	C:\AGBAG\EL-MMB
22	1-1/2 Gate Valve			B:\GVALVE	C:\AGBAG\GVALVEB
23	1/2 Hose Ass'y No.				
24	1/2 JIC x 3/8 MPT Adaptor			B:\HYDFTG	C:\AGBAG\ADAPT-MMB
25	Planetary			B:\PLANET	C:\AGBAG\PLANETB
26	1/2 MPT x 1/2 JIC Adaptor			B:\HYDFTG	C:\AGBAG\ADAPT-MMB
27	1/2 Hose Ass'y No.				
28	1-1/4 Hose Ass'y No.				
29	1" MPT x 1-1/4 JIC "L"			B:\HYDFTG2	C:\AGBAG\EL-ADAPB
30	3/8 NCT X 2-1/2 Allen Head			B:\CYLTUBE	C:\AGBAG\ALLENB
31	3/8 Lock Washer			B:\BOLT	C:\AGBAG\WASHB
32	Code 62			B:\HYDFTG	C:\AGBAG\FLG-B
33	Hyd. Rotor Motor			B:\ROFORMOT	C:\AGBAG\ROFORMTB
34	1-1/4 Hose Ass'y No.				
35	Hyd. Oil Filter			B:\HTANKASY	C:\AGBAG\HTANKASB
36	1/2 MPT x 1/2 JIC 45 "L"			B:\HYDFTG2	C:\AGBAG\EL-45FMB
37	Hyd. Tank			B:\HTANKASY	C:\AGBAG\HTANKASB
38	1/4 MPT x 1/4 JIC Adaptor			B:\HYDFTG	C:\AGBAG\ADAPT-MMB
39	1/4 Hose Ass'y No.				

*Texaco
Synstar
70-90 weight
R.R. Seal
Box*

** FILTERS AND*

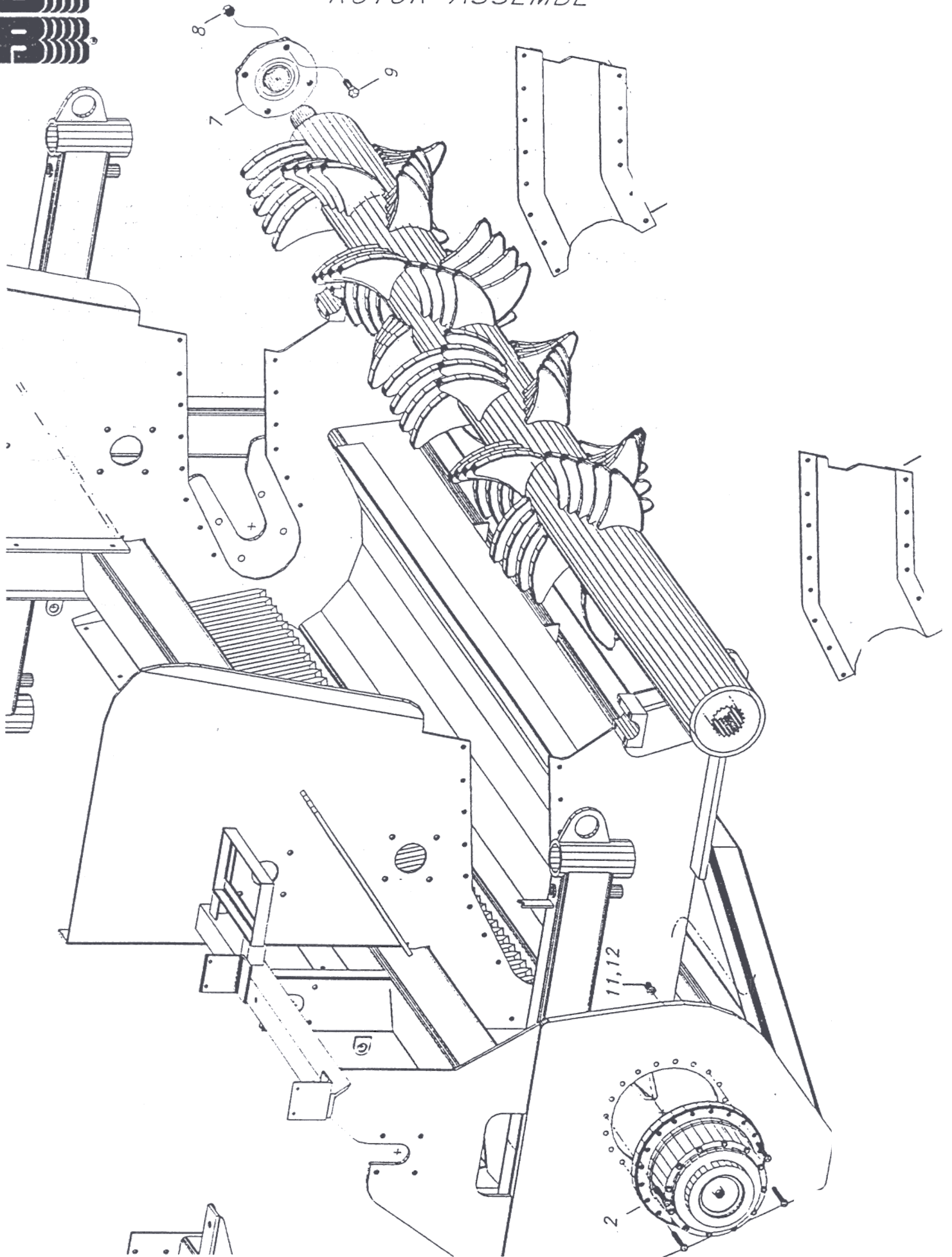
*1540170 PARKER
1540181 P550388*

*OIL
1540173 — 1452*

*GEARBOX OIL
AUBURN 70-90 SYNTHETIC
FRAMA — 46 W, ANTI WEAR
ANTI FOAM
2*



ROTOR ASSEMBL



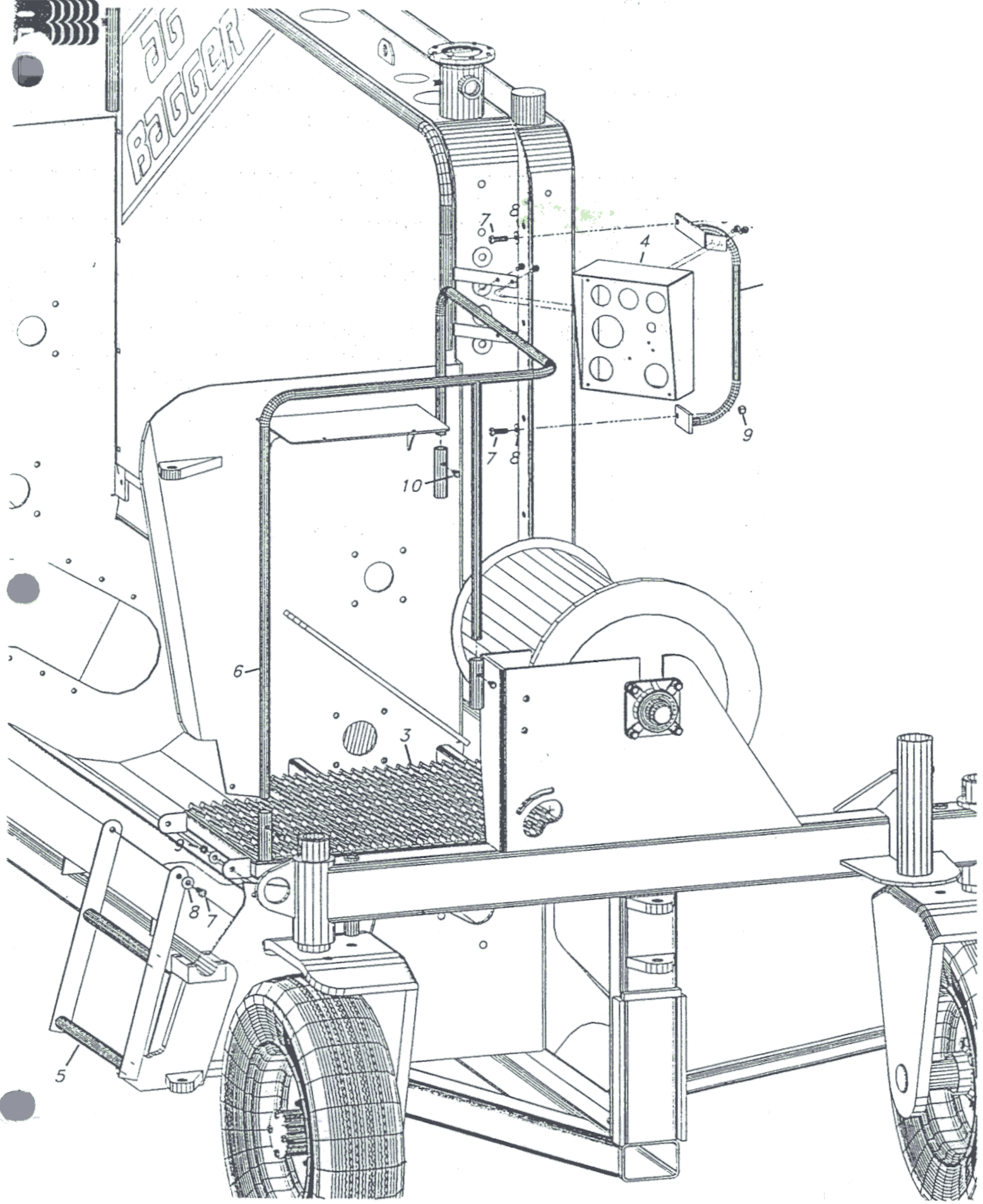
ROTOR ASSEMBLY

Date: 13SEP92	By: <i>JD</i>
Ass'y DWG	
File No.: C:\AGBAG\ROTORASY	
Bill of Mat'l	
File No.: C:\AGBAG\ROTORBY	

NO.	DESCRIPTION	DRAWING NO.	PART NO.	FILE NO.	BLOCK NO.
2	Rotor			B:\WDMNT	C:\ROTOR\WDMNTB
3	Planetary			B:\PLANET	C:\ROTOR\PLANETB
4	Access Panel, Left			B:\1000-002	C:\ROTOR\1000BL02
5	Access Panel, Right			B:\1000-002	C:\ROTOR\1000BR02
6	1/2" NC Hex Cap Screw x 1-1/4"				
7	1/2" NC Hex Nyloc Nut				
8	2-15/16" 4 Bolt Flange Bearing			B:\ROTBG	C:\AGBAG\ROTBGB
9	3/4" NC Hex Nyloc Nut				
10	3/4" NC Hex Cap Screw x 2-1/2"				
11	1/2" NC Hex Cap Screw x 3"				
12	1/2" Flat Washer				
13	1/2" NC Hex Nyloc Nut				
13	Rotor Tooth (Only)	1003-1010-001B		B:\TOOTH	C:\ROTOR\TOOTHB
14	Rotor Tooth Cap (Only)	1003-1010-000		" "	" "

7000 PLATFORM ASSEMBL

56
BAGGER



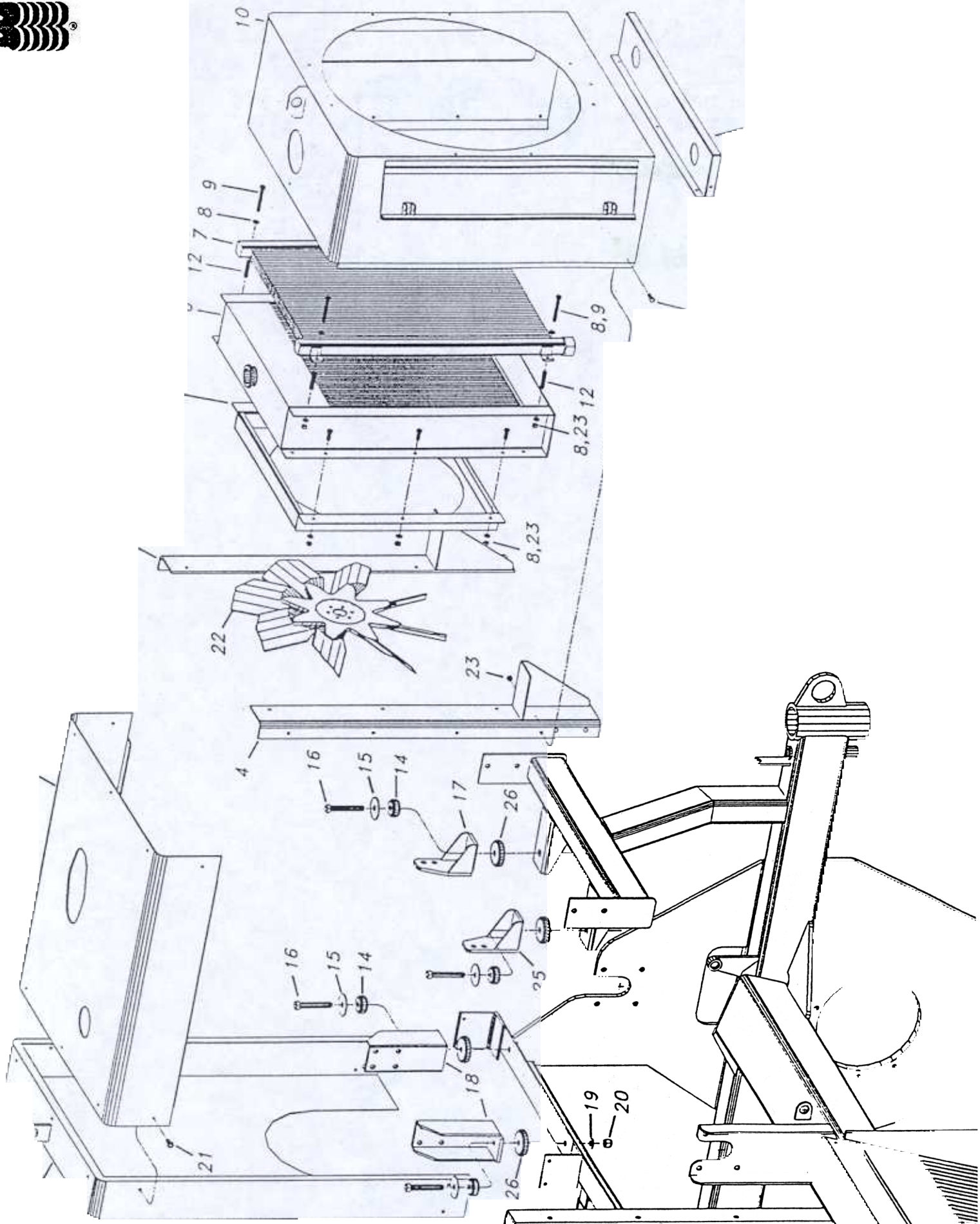
ENGINE COWL & RADIATOR ASS'Y

Date:	16 NOV 92	Dr.	
Ass'y DWG	C:\AGBAG\ENGCOWL		
File No.:	C:\AGBAG\ENGCOWLBM		
Bill of Mat'l	C:\AGBAG\ENGCOWLBM		

NO.	DESCRIPTION	DRAWING NO.	PART NO.	FILE NO.	BLOCK NO.
1	Engine Cowl, Rear			B:\ENGCOV	C:\ROTOR\ENGCOVRB
2	Engine Cowl, Top			B:\ENGCOV	C:\ROTOR\ENGCOVTB
3	Radiator Support, Right			B:\ENGCOV	C:\ROTOR\RADSUPB
4	Radiator Support, Left				
5	Fan Shroud			B:\AGBAG\SHROUD	C:\AGBAG\SHROUDB
6	Radiator	1500314		B:\RADIATOR	C:\ROTOR\RADIATRB
7	Hyd. Oil Cooler m-35	1540078		B:\RAD	C:\ROTOR\OILCOOLB
8	3/8" Flat Washer				
9	3/8 NC Hex Cap Screw x 3"				
10	Engine Cowl, Front			B:\RADCOV	C:\ROTOR\RADCOVRB
11	Engine Cowl, Bottom			B:\ENGCOV	C:\ROTOR\RADSUPB
12	3/8 I.D. Pipe x 2" lg.				
13	Engine Cowl Door			B:\RADCOV	C:\ROTOR\RADOORB
14	Mount Disk, Top			B:\ENGDISK	C:\AGBAG2\ENGDISB2
15	Flat Washer			B:\ENGDISK	C:\AGBAG2\FWASHB2
16	5/8" NC Hex Cap Screw x 4"				
17	Engine Mount, Right Front			B:\ENGMT3	C:\ROTOR\ENGMTFB
18	Engine Mount, Rear			B:\ENGMT3	C:\ROTOR\ENGMTRB
19	5/8" Flat Washer				
20	5/8" Hex Nyloc Nut				
21	1/4" Hex Sealing Tapping Screws				
22	Engine Fan 1500124			B:\FAN	C:\AGBAG\FANB
23	1/4" NC Hex Nyloc Nut				
24	1/4" NC Hex Cap Screw x 1"				



ENGINE COWL & RADIATOR ASSEMBLY



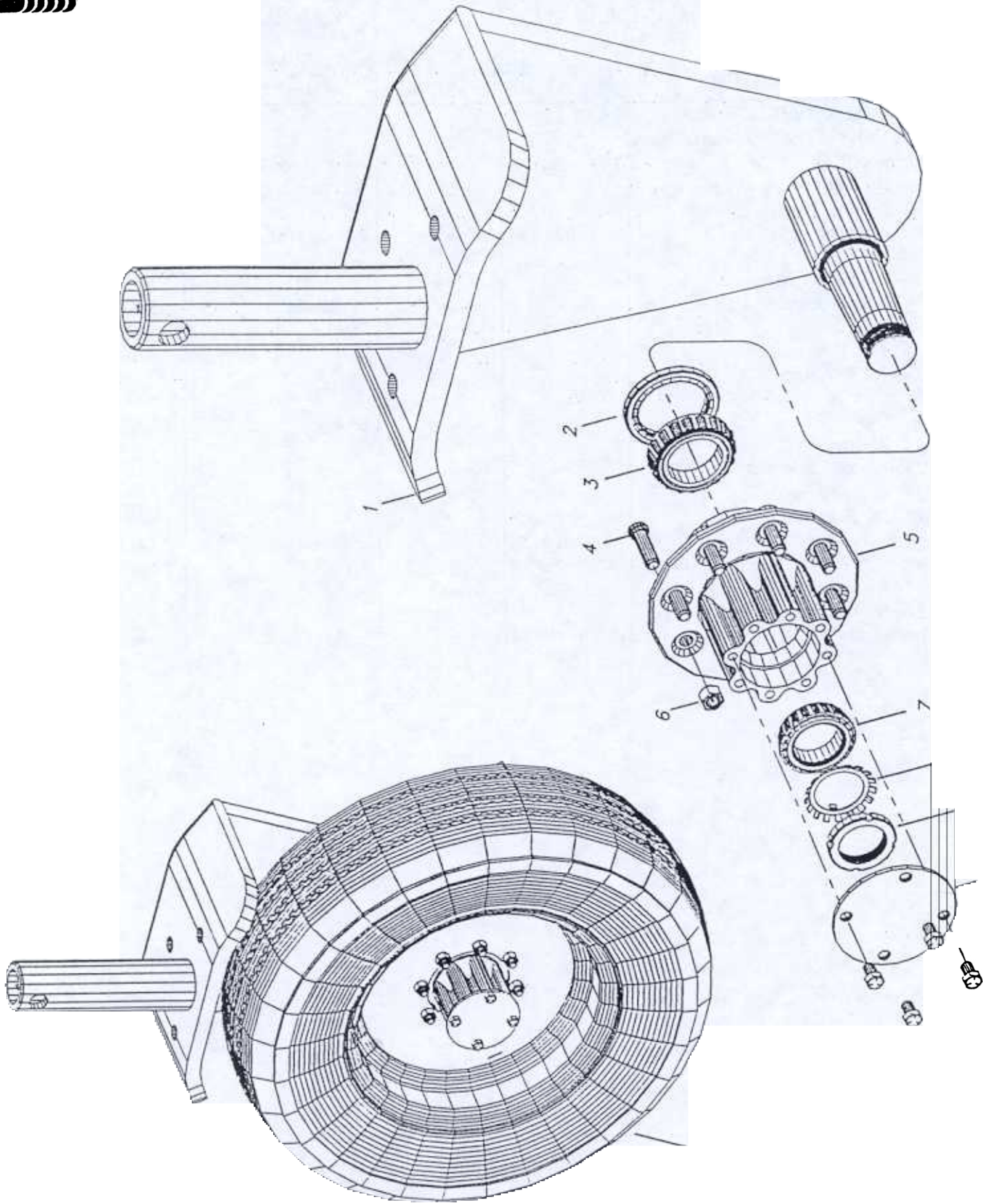
PLATFORM ASSEMBLY

Date	9SEP92	Sheet	2
Ass'y DWG			
File No.:	C:\AGBAG\PLATFASY		
Bill of Mat'l			
File No.:	C:\AGBAG\PLATFBM		

NO.	DESCRIPTION	DRAWING NO.	PART NO.	FILE NO.	BLOCK NO.!
1	Frame (Reference)			C:\AGBAG\7000	
2	Handle/Bracket			B:\INSBRKT	C:\AGBAG\HANDLE
3	Platform			B:\PLATF	C:\AGBAG\PLATFB
4	Instrument Console			B:\CONSOLE	C:\AGBAG\CONSOLEB
5	Ladder			B:\LADDER	C:\AGBAG\LADDERB
6	Handrail			B:\HANDRL	C:\AGBAG\HANDRLB
7	1/2" NC Hex Cap Screw x 1-1/2"				
8	1/2" Flat Washer				
9	1/2" NC Hex Nylok Nut				
10	Screw (Size?)				



WHEEL COLUMN ASSEMBL



WHEEL COLUMN ASSEMBLY

Date: 9SEP92	By: <i>D</i>
Ass'y DWG	
File No.: C:\AGBAG\WHEELASY	
Bill of Mat'l	
File No.: C:\AGBAG\WHEELBM	

NO.	DESCRIPTION	DRAWING NO.	PART NO.	FILE NO.	BLOCK NO.
1	Wheel Column	70005000-0201-000		B:\0201-000	C:\AGBAG\WHEELHB
2	Seal			B:\SEALCAP	C:\AGBAG\SEALB
3	Wheel Bearing, Inner 1510087			B:\BRG2	C:\AGBAG\BRG2B
4	Wheel Stud			C:\AGBAG\BOLT	C:\AGBAG\STUDB
5	Wheel Hub				C:\AGBAG\HUBB
6	Lug Nut			C:\AGBAG\BOLT	C:\AGBAG\LNUTSB
7	Wheel Bearing, Outer 1510092			B:\BRG2	C:\AGBAG\BRG2SB
8	Lock for Retainer			B:\SEALCAP	C:\AGBAG\LOCKB
9	Retainer			B:\SEALCAP	C:\AGBAG\RETAINB
10	Hub Cap			B:\SEALCAP	C:\AGBAG\CAPB
11	3/8" NC Hex Cap Screw x 1"				
12	Wheel (Size?)			B:\TIRE	C:\AGBAG\TIREB
13	Tire (Size?)			" "	" "
14	Inner Tube (Size?)			" "	" "

STEERING ASSEMBLY

Date:	13SEP92	By:	<i>JD</i>
Ass'y DWG	C:\AGBAG\STEERASY		
Bill of Mat'l	C:\AGBAG\STEER		

NO.	DESCRIPTION	DRAWING NO.	PART NO.	FILE NO.	BLOCK NO.
1	See WHEEL COLUMN ASSEMBLY	7000500-0201-000			C:\AGBAG\WHEELASB
2	3-1/4" ID x 4-1/4" OD Bronze Wash.				
3	Retaining Ring	700510-0202-000		B:\0202-005	C:\AGBAG\0202B000
4	Pin, Steering Lock <i>1010021</i>			B:\PINS	C:\AGBAG\PIN2B
5	Pin, Steering Pivot			"	C:\AGBAG\PIN3B
6	Steering Hitch Rod	912-02-161	<i>1110000</i>	B:\-02-161	C:\AGBAG\ -02B161
7	1" NC x ?				
8	1" NC Hex Jam Nut				
9	1" Rod End Bearing			B:\RODBRG	C:\AGBAG\RODBRGB
10	Pin Clip			B:\CLIP	C:\AGBAG\CLIPB
11	3/4" Flat Washer				
12	3/4" NC Hex Nyloc Nut				
13	Clip				
14	Pin, Hitch			B:\PINS	C:\AGBAG\PIN1B
15	3/4" Anchor Pin				
16	3/4" NC Hex Jam Nut				
17	3/4" Lock Washer				
18	3/4" NC Hex Nut				
19	Tow Hitch, Outer Telescoping Tube	7003411-1201-000		B:\HITCH	C:\AGBAG\HITCHOTB
20	Tow Hitch, Inner Telescoping Tube	7003415-1202-000		B:\HITCH	C:\AGBAG\HITCHINB
21	1/2" NC Hex Nyloc Nut				
22	1/2" NC Hex Cap Screw x 3-1/2"				
23	Steering Lever	7003433-1211-000		B:\1211-000	C:\AGBAG\1211BOL