

## A417 Missing Link

### IMPORTANT

Works Information for your area

Customer Contact Centre: **0300 123 5000**

[info@highwaysengland.co.uk](mailto:info@highwaysengland.co.uk)

[www.highwaysengland.co.uk](http://www.highwaysengland.co.uk)

National Highways  
Ash House  
Falcon Road  
Sowton Industrial Estate  
Exeter  
EX2 7LB

25 April 2025

Dear Customer,

### **A417 Missing Link – Road Closures**

We're writing to inform you that as part of the A417 Missing Link scheme, we will be extending the road closure at Cowley junction. To complete our roadworks, additional work is required to move existing utilities. These closures are necessary to complete their diversions.

#### **What are we doing and when?**

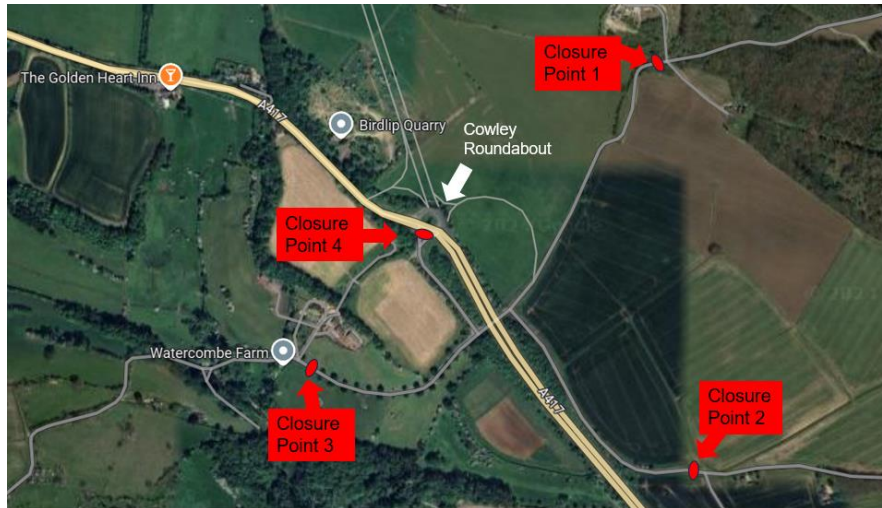
We will be installing an upgraded drainage system, utilities, and a new footpath beneath the A417 Bridge at Cowley Junction.

From Wednesday 24 April 2025, this work is expected to be completed in September 2025. We will be working during the day, with road closures remaining in place overnight.

We appreciate your patience and understanding. **How will this affect my journey?**

We have provided a diagram below, which highlights the following road closures:

- **Closure Point 1:** Follow Climperwell Road towards Cowley.
  - Follow diversion via Cowley to the A435.
- **Closure Point 2:** Follow High Cross Road towards Cirencester.
  - Follow diversion via Elkstone to the A417.
- **Closure Point 3:** Follow Climperwell Road towards Churchview.
  - Follow diversion via Brimpsfield to Birdlip.
- **Closure Point 4:** Traffic will not be able to exit the A417 onto the link road at Cowley Junction.



- The A417 will remain open and mainline traffic will not be affected.
- There will be no pedestrian access through the road closures.
- Emergency access will be maintained at all times.

Diversion routes will be in place as approved by Gloucestershire County Council.

### Speed limit change

Don't forget, a temporary speed limit is now in place between the A46 Brockworth junction and The Air Balloon Roundabout. Please note that driver information is not shared with the A417 Project, as enforcement is carried out by the police using automatic number plate recognition cameras.

### Where to find more information

You can find more information about the scheme on our webpage [www.nationalhighways.co.uk/a417-missing-link](http://www.nationalhighways.co.uk/a417-missing-link).

If you have any questions, or you would like to speak to someone about this work, you can call our contact centre on **0300 123 5000**, who will pass your details to the team, or email [a417missinglinkatairballoon@nationalhighways.co.uk](mailto:a417missinglinkatairballoon@nationalhighways.co.uk).

Our Customer Hub is now open, welcoming visitors to the A417 Missing Link project. The Customer Hub is in the Kier Crusher Plant and will be open every Tuesday and Wednesday between 10am and 2pm. You can find directions to the Kier Crusher Plant, GL4 8JX (past Acorn House) on our project webpage.

Yours faithfully,

A417 Communications Team