



Road Management Services

Working on behalf of



0300 123 5000

[www.nationalhighways.co.uk](http://www.nationalhighways.co.uk)

3<sup>rd</sup> October 2025

### **Major Maintenance on A419/A417**

We are planning essential maintenance at the A419/A417. The work will affect various sections of the A419/A417. Please note that the remaining sections of the A419/A417 outside of the works area shall operate as usual.

### **What work is being carried out?**

The works being delivered include road marking and catseye replacement, resurfacing, barrier repairs and bridge painting on various sections of the A419/A417.

### **What are the benefits to road users?**

Our work reduces interventions, so the road remains open thus reducing delays and improving journey time reliability. Also, it will provide a safer and smoother journey for road users.

### **When and where will the work be carried out? (Traffic restrictions – check before you travel)**

There are overnight closures scheduled on the A419/A417 network.

- **Overnight closure timings are from 20:00 hours until 06:00 hours the following morning**

### **Road Marking Replacement and Catseye Works:**

- **A419 Closure between A420 White Hart Roundabout Junction and Turnpike Junction (Diversion Route 12 Northbound)**
  - Overnight closure on Friday 3<sup>rd</sup> October
- **A419 Closure between Turnpike Junction and Spine Road Junction (Diversion**

### **Route 14 Northbound)**

- Overnight closure on Friday 3rd October
- **A419 Closure between Spine Road Junction and Burford Road Interchange (Diversion Route 6 Northbound)**
  - Overnight closures ONLY from Monday 6<sup>th</sup> October to Thursday 9<sup>th</sup> October
- **A419 Closure between Cricklade Junction and Burford Road Interchange (Diversion Route 6 & 7 Northbound)**
  - Overnight closure on Thursday 9<sup>th</sup> October
- **A419 Closure between Burford Road Interchange and A420 White Hart Roundabout Junction (Diversion Route 6, 12 & 14 Southbound) PLEASE NOTE THAT THE SPECIFIC DIVERSION ROUTE FOR EACH NIGHT WILL DIFFER**
  - Weekday overnight closures ONLY from Friday 10<sup>th</sup> October to Thursday 23<sup>rd</sup> October

### **Resurfacing Works:**

- **A419 Closure between Commonhead Junction and A420 White Hart Roundabout Junction (Diversion Route 11 Northbound)**
  - Overnight closure on Saturday 4<sup>th</sup> October

### **Bridge Painting Works:**

- **A417 Closure between M5 Junction 11A and A46 Shurdington Road Junction (Diversion Route 1 Southbound)**
  - Overnight closures ONLY from Monday 6<sup>th</sup> October to Thursday 9<sup>th</sup> October

### **Barrier Repair Works:**


- **A419 Closure between M4 Junction 15 and Commonhead Junction (Diversion Route 10 Northbound)**
  - Overnight closure on Tuesday 7<sup>th</sup> October

The A419/A417 will be fully operational as usual outside of the specified hours. Diversion routes will be signed, and signage will also be in place before the start of works as a reminder.

### **Property access**

Should access to your property be required, traffic management personnel will make every effort to facilitate this. However, some delay may occur while safety measures are implemented to allow safe passage through the work site. A contact number will be provided at the closure entrance for assistance.

## **Diversion route**

The proposed diversion routes for the closures are outlined below. Please refrain from following satellite navigation systems and instead adhere to the signed diversion routes, which correspond to the diversion maps enclosed with this letter and are clearly marked with diversion symbols at the start of the diversion routes (e.g. for Diversion Route 6 Northbound, follow ).

### **Diversion Route 1 Southbound – Closure of M5 Junction 11A and A417 Closure between M5 Junction 11A and A46 Shurdington Road Junction**

#### **From M5 South:**

From M5 Southbound carriageway take the exit slip road at M5 Junction 11.

At the M5 J11 roundabout take the 3<sup>rd</sup> exit signed Cirencester, Gloucester A40.

At Elmbridge Court roundabout take the 2<sup>nd</sup> exit signed Cirencester A417.

At the next roundabout take the 1<sup>st</sup> exit signed Cirencester A417.

At Zoons Court roundabout take the 2<sup>nd</sup> exit.

At the road closure take the exit slip road to the M5 J11A roundabout and follow the closure for the M5 Northbound and Gloucester traffic.

#### **From M5 North and Gloucester:**

From M5 J11A roundabout follow the diversion signing to Gloucester Business Park.

At the roundabout take the 3<sup>rd</sup> exit signed Gloucester Business Park (A417)

At roundabout take 1<sup>st</sup> exit signed Gloucester Business Park.

At 1<sup>st</sup> roundabout continue straight over.

At 2<sup>nd</sup> roundabout continue straight over.

At the traffic signals at Gloucester Business Park junction turn right.

At Brockworth Roundabout take the 1<sup>st</sup> exit signed Cirencester A417 & M5.

At the A46 Shurdington Road Junction roundabout take the 3<sup>rd</sup> exit signed Cirencester A417.

Re-join the A417 Northbound carriageway take 1<sup>st</sup> exit M5 Northbound & Gloucester or 3<sup>rd</sup> exit A417 Cirencester.

### **Diversion Route 6 Northbound – A419 Closure between Spine Road Junction and Burford Road Interchange**

From the A419 Northbound Carriageway take the Spine Road Junction exit slip road and then take the 2<sup>nd</sup> exit at the roundabout signed Cirencester, Stroud A419.

At 2<sup>nd</sup> roundabout take the 1<sup>st</sup> exit continuing on the A419 Northbound.

At 3<sup>rd</sup> roundabout take the 2<sup>nd</sup> exit signed Cirencester A419.

At 4<sup>th</sup> roundabout take the 3<sup>rd</sup> exit Cirencester A419, Cheltenham (A435), Motorway (M5), Gloucester (A417), Stow (A429).

At 5<sup>th</sup> roundabout take the 3<sup>rd</sup> exit signed Stow A429, Burford (B4425), Lechlade (A417).

At 6<sup>th</sup> roundabout take the 1<sup>st</sup> exit signed (M5), Gloucester A417 onto entry slip road to A417 Northbound Carriageway.

#### **Diversion Route 6 Southbound – A419 Closure between Burford Road Interchange and Spine Road Junction**

From the A417 Southbound Carriageway take the Burford Road Interchange exit slip and take the 4<sup>th</sup> exit at the roundabout over the A417 Carriageway signed Cirencester A429, Stroud (A419).

At 2<sup>nd</sup> roundabout take the 1<sup>st</sup> exit signed Cirencester A429, Stroud (A419).

At 3<sup>rd</sup> roundabout take 1<sup>st</sup> exit signed The South West, Stroud, Swindon A419, Chippenham (A429).

At 4<sup>th</sup> roundabout take the 1<sup>st</sup> exit signed Swindon A419.

At 5<sup>th</sup> roundabout take the 1<sup>st</sup> exit signed Swindon A419.

At 6<sup>th</sup> roundabout take 2<sup>nd</sup> exit signed (M4), Swindon A419.

At 7<sup>th</sup> roundabout, South Cerney Junction, take 1<sup>st</sup> exit and continue over the A419 Carriageway.

At 8<sup>th</sup> roundabout take 3<sup>rd</sup> exit onto A419 Southbound entry slip road.

#### **Diversion Route 7 Northbound – A419 Closure between Cricklade Junction and Spine Road Junction**

From the Cricklade Northbound exit slip road take the 2<sup>nd</sup> exit at the Cricklade roundabout signed Cricklade B4040.

At 1<sup>st</sup> roundabout take 1<sup>st</sup> exit signed Malmesbury B4040.

At 2<sup>nd</sup> roundabout take 1<sup>st</sup> exit onto the High Street signed Malmesbury B4040.

At 3<sup>rd</sup> roundabout take 2<sup>nd</sup> exit signed Malmesbury B4040.

At Common Hill Roundabout take 1<sup>st</sup> exit onto Malmesbury Road signed Malmesbury B4040.

At crossroad take turn right onto Ashton Road signed Ashton Keynes B4696.

At crossroad take turn right onto Spine Road East signed Swindon B4696.

At South Cerney roundabout take 4<sup>th</sup> exit signed Swindon A419.

#### **Diversion Route 10 Northbound – A419 Closure between M4 Junction 15 and Commonhead Junction**

From the A436 Northbound take 1<sup>st</sup> exit at M4 J15 roundabout onto M4 signed Bristol M4.

At M4 J16 exit slip roundabout take 4<sup>th</sup> exit onto Great Western Way signed Swindon A3102



At Blagrove roundabout take 2<sup>nd</sup> exit on to Great Western Way signed Town Centre A3102.  
At Mannington roundabout take 2<sup>nd</sup> exit onto Great Western Way signed Great Western.  
At The Meads roundabout take 2<sup>nd</sup> exit onto Great Western Way signed Barnfield B4006.  
At Barnfield roundabout take 2<sup>nd</sup> exit onto Great Western Way signed Great Western.  
At Bruce Street Bridges 1<sup>st</sup> roundabout take 1<sup>st</sup> exit signed Cheney Manor.  
At Bruce Street Bridges 2<sup>nd</sup> roundabout take 2<sup>nd</sup> exit signed North Star B4289.  
At Bruce Street Bridges 3<sup>rd</sup> roundabout take 1<sup>st</sup> exit onto Great Western Way signed Stratton B4289.  
At North Star roundabout take 2<sup>nd</sup> exit onto Great Western Way signed Gorse Hill.  
At Cockleberry 1<sup>st</sup> roundabout take 2<sup>nd</sup> exit signed Swindon Centre (M4 East).  
At Cockleberry 2<sup>nd</sup> roundabout take 2<sup>nd</sup> exit onto Great Western Way signed Swindon Centre (M4 East).  
At Transfer Bridges 1<sup>st</sup> roundabout take 3<sup>rd</sup> exit signed A4289.  
At Transfer Bridges 2<sup>nd</sup> roundabout take 2<sup>nd</sup> exit onto Ocotal Way signed Swindon Centre.  
At Colbourne roundabout take 1<sup>st</sup> exit onto Ocotal Way signed Through Traffic.  
At Wills roundabout take 2<sup>nd</sup> exit onto Ocotal Way signed Oxford A420.  
At junction turn right onto Drakes Way signed Motorway M4.  
At Drakes roundabout take 1<sup>st</sup> exit onto Queens Drive signed Walcot E A4259.  
At Coate roundabout take 3<sup>rd</sup> exit onto Marlborough Road signed Marlborough A4259.  
At Commonhead roundabout take 1<sup>st</sup> exit signed A419.

**Diversion Route 11 Northbound – A419 Closure between Commonhead Junction and A420 White Hart Roundabout Junction**

From the Commonhead northbound exit slip take the 1<sup>st</sup> exit at the Commonhead roundabout signed Swindon A4259.  
At Coate Roundabout take 3<sup>rd</sup> exit onto Queens Drive signed town centre A4259.  
At Drakes roundabout take 2<sup>nd</sup> exit onto Drakes Way Signed Burford (A361).  
At Greenbridge roundabout take 3<sup>rd</sup> exit onto Slade Drive signed Oxford (A420).  
At White Hart roundabout 5<sup>th</sup> exit signed Cirencester (A419N).  
At island 1<sup>st</sup> exit onto slip signed Cirencester A419.

**Diversion Route 12 Northbound – A419 Closure between A420 White Hart Roundabout Junction and Turnpike Junction**

From the A419, exit at the A420 Northbound Exit Slip and then take the 2<sup>nd</sup> exit at the first roundabout signed A4312.  
At White Hart roundabout take the 1<sup>st</sup> exit on to the Oxford Road signed Swindon, Dorcan and Stratton.

At Lady Margaret Traffic Lights continue forward signed A4312 Town Centre.  
At Greenbridge roundabout take the 4<sup>th</sup> exit signed Highworth (A361), Cirencester (A419).  
At the New Inn roundabout take the 1<sup>st</sup> exit onto Bridge End Road signed Elgin B4143.  
At Gypsy Lane roundabout take 2<sup>nd</sup> exit onto Gypsy Lane signed Elgin B4143.  
At next roundabout take 2<sup>nd</sup> exit onto Gypsy Lane signed Gorsehill.  
At Chapel roundabout take 3<sup>rd</sup> exit signed Cirencester A4311 (A419).  
At Elgin Drive roundabout take 1<sup>st</sup> exit signed Cirencester A4311 (A419).  
At Kembrey Park roundabout take 2<sup>nd</sup> exit signed Cirencester (A419).  
At Headlands roundabout take 1<sup>st</sup> exit signed Cirencester A4311 (A419).  
At Moonrakers roundabouts take 2<sup>nd</sup> then 1<sup>st</sup> exits onto Cricklade Road signed Cirencester A4311 (A419), through next set of traffic Lights then follow on to Arkwright Junction.  
At Arkwright Traffic Lights, follow straight on signed (A419) Cirencester.  
At the next set of Traffic Lights, merge to the right and follow signs for (A419) Cirencester.  
Then at next set of Traffic Lights, stay in right hand lane and Re-Join (A419) Cirencester.

**Diversion Route 12 Southbound – A419 Closure between Lady Lane Junction and A420 White Hart Roundabout Junction**

From the Lady Lane Southbound Exit Slip turn right at 1<sup>st</sup> set of traffic lights signed Swindon A4311.  
At 2<sup>nd</sup> set of traffic lights turn left and follow road signed Swindon N & W, A4311.  
At 3<sup>rd</sup> set of traffic lights carry straight on through, taking 1<sup>st</sup> exit left following Town Centre.  
At 4<sup>th</sup> set of traffic lights carry straight on still following Town Centre.  
At Moonrakers roundabouts take 2<sup>nd</sup> then 1<sup>st</sup> exit signed Town Centre A4311.  
At Headlands roundabout take 2<sup>nd</sup> exit signed Town Centre.  
At Kembrey Park roundabout take 2<sup>nd</sup> exit signed Gorse Hill A4311.  
At Elgin Drive roundabout take 2<sup>nd</sup> exit Town Centre (M4).  
At Chapel roundabout take 1<sup>st</sup> exit onto Gypsy Lane signed Burford (A361).  
At Murdoch roundabout take 2<sup>nd</sup> exit signed BMW Group.  
At Gypsy Lane roundabout take 1<sup>st</sup> exit onto Bridge End Road signed BMW Group.  
At New Inn roundabout take the 2<sup>nd</sup> exit signed Oxford (A420), Motorway (M4).  
At Greenbridge roundabout take the 1<sup>st</sup> exit on to Slade Drive signed Oxford (A420), (M4).  
At Lady Margaret traffic lights carry straight on.  
At White Hart roundabout take the 4<sup>th</sup> exit signed (M4), A419 (S) to rejoin the A419 Southbound Carriageway.

### **Diversion Route 14 Northbound – A419 Closure between Turnpike Junction and Spine**

#### **Road Junction**

From the Turnpike Northbound Exit Slip merge to the left, signed Swindon N&W A4311.

At 1<sup>st</sup> set of Traffic Lights continue onto Cricklade Road A4311, stay right.

At 2<sup>nd</sup> set of Traffic Lights continue straight onto Thamesdown Drive A4311, signed West Swindon.

At 3<sup>rd</sup> set of Traffic Lights continue straight on.

At 4<sup>th</sup> set of Traffic Lights continue straight on.

At 5<sup>th</sup> set of Traffic Lights continue straight on.

At 6<sup>th</sup> set of Traffic Lights continue straight on.

At 7<sup>th</sup> set of Traffic Lights continue straight on.

At 8<sup>th</sup> set of Traffic Lights continue straight on.

At 9<sup>th</sup> set of Traffic Lights continue straight on.

At 10<sup>th</sup> set of Traffic Lights continue straight on.

At Sparcells roundabout, take 2<sup>nd</sup> exit, signed M4, Hillmead, B4534.

At next roundabout take 2<sup>nd</sup> exit, signed M4, Hillmead, B4534.

At next roundabout take 1<sup>st</sup> exit, signed M4, Hillmead, B4534.

At next roundabout take 2<sup>nd</sup> exit signed M4, Shaw, B4534.

At next roundabout take 2<sup>nd</sup> exit to continue on B4534.

At next roundabout take 2<sup>nd</sup> exit signed M4, Town Centre, Westmead, Westlea, B4006.

At next roundabout take 3<sup>rd</sup> exit signed M4, Town Centre, Toothill, B4006.

At next roundabout take 2<sup>nd</sup> exit signed M4, Royal W. Bassett, Windmill, Blagrove, A3102.

At next roundabout take 2<sup>nd</sup> exit signed M4, Royal W. Bassett, A3102.

At next roundabout take 2<sup>nd</sup> exit signed M4 West.

At next roundabout take 2<sup>nd</sup> exit to continue on A3102.

At next roundabout take 2<sup>nd</sup> exit signed Malmesbury, Brinkworth, Cricklade, Ashton Keynes B4042.

Continue to Royal Wootton Bassett using the B4042 and travel to Ashton Keynes using the B4696.

Continue along B4696 onto entry slip road to A419 Northbound Carriageway.

### **Diversion Route 14 Southbound – A419 Closure between A419 Closure between Spine**

#### **Road Junction and Lady Lane Junction**

From the A419 Southbound Carriageway take the Spine Road Junction exit slip road.

At 1<sup>st</sup> roundabout take 4<sup>th</sup> exit to travel along the B4696 Spine Road.

At the 2<sup>nd</sup> roundabout take the 2<sup>nd</sup> exit to continue travelling along the B4696 Spine Road East to Aston Keynes.

Continue to Royal Wootton Bassett using the B4042.

At 3<sup>rd</sup> roundabout take 2<sup>nd</sup> exit signed M4, Swindon, Interface, Woodshaw, A3102.

At 4<sup>th</sup> roundabout take 1<sup>st</sup> exit signed M4, Swindon, A3102.

At 5<sup>th</sup> roundabout take 2<sup>nd</sup> exit signed Swindon, A3102.

At 6<sup>th</sup> roundabout take 2<sup>nd</sup> exit signed Town Centre, A3102.

At 7<sup>th</sup> roundabout take 2<sup>nd</sup> exit signed Great Western, North Star, Stratton, B4006.

At 8<sup>th</sup> roundabout take 1<sup>st</sup> exit to continue on B4006.

At 9<sup>th</sup> roundabout take 2<sup>nd</sup> exit signed Cirencester A419, Shaw, Hillmead.

At 10<sup>th</sup> roundabout take 2<sup>nd</sup> exit signed Cirencester A419, Hillmead, B4534.

At 11<sup>th</sup> roundabout take 2<sup>nd</sup> exit signed Cirencester A419, Sparcells, B4534.

At 12<sup>th</sup> roundabout take 2<sup>nd</sup> exit to continue on B4534.

At 13<sup>th</sup> roundabout take 2<sup>nd</sup> exit signed Cirencester A419, North Swindon, B4534.

At 14<sup>th</sup> roundabout take 2<sup>nd</sup> exit signed Cirencester A419, North Swindon, Blunsdon, B4534.

Continue along B4534 onto entry slip road to A419 Southbound Carriageway.

## **Contact**

Fatima Alawad (Stakeholder Support Manager)

**Email:** Fatima.Alawad@wsp.com

Yours sincerely,



Mike Jackson  
**Road Manager**


*Enc. Diversion Route Map*

## **ROUTE 1**

**A417 Southbound Closed  
Between  
M5 Junction 11A  
And  
A46 Shurdington Road Junction**



# A417 SOUTHBOUND CLOSED BETWEEN M5 JUNCTION 11A AND A46 SHURDINGTON ROAD



Diversion Route

Symbol

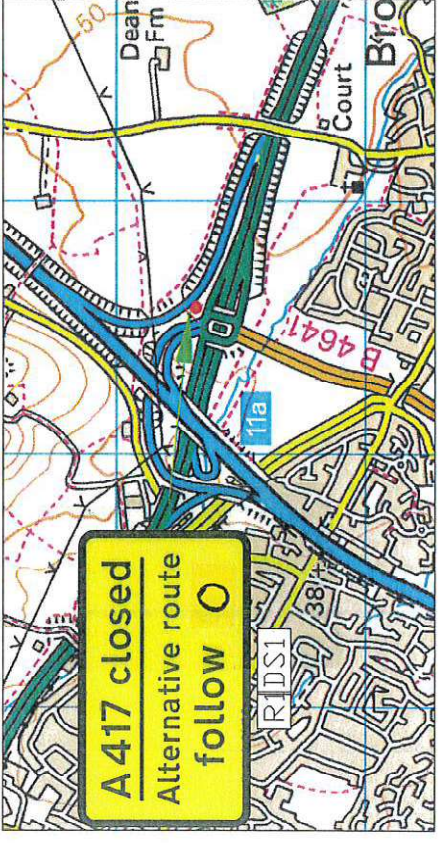
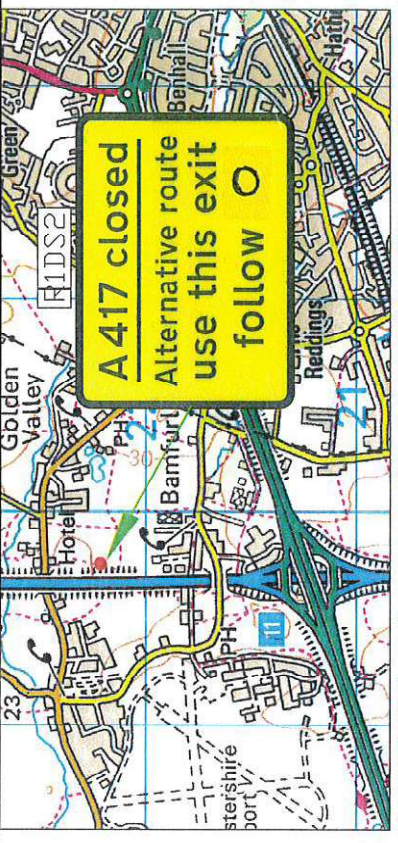
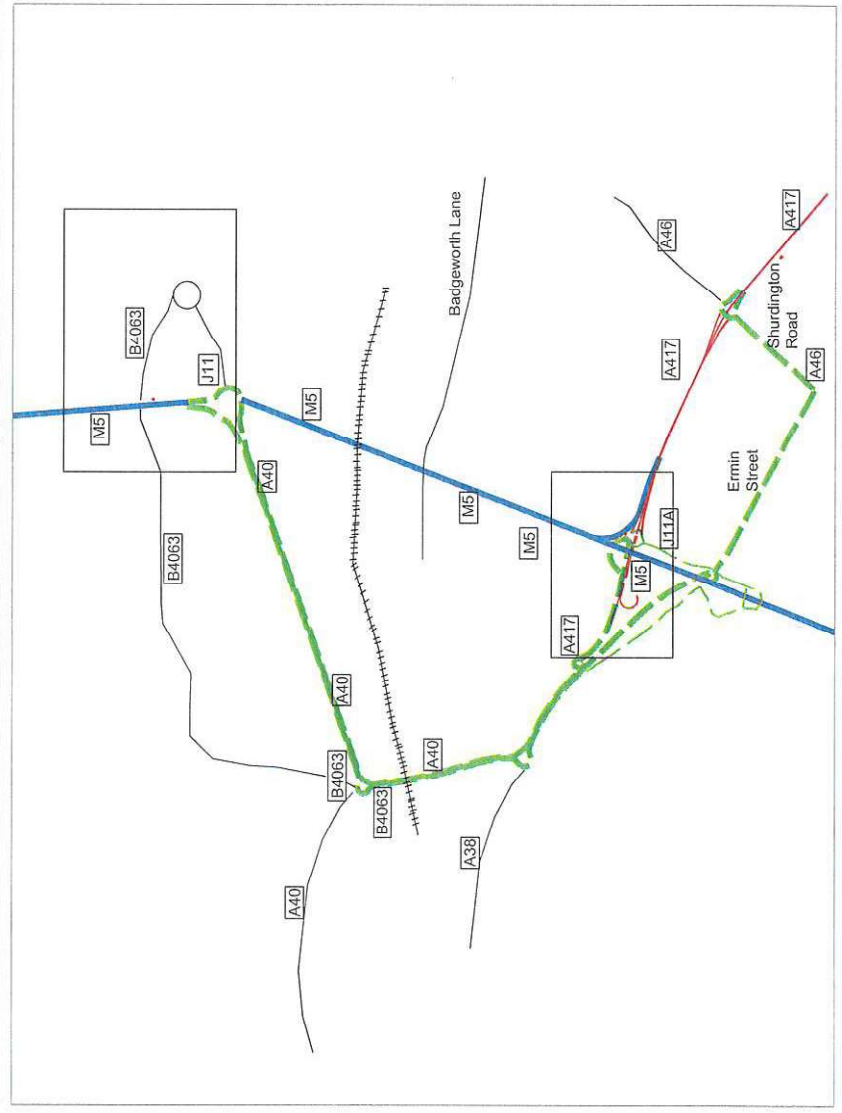
Action Points

Step 1: Open trigger sign on M5 Southbound carriageway

Step 2: Open trigger sign on A417/B4641 roundabout.

A417 Southbound Access at M5 J 11A and A417/B4641 Roundabout A417 Southbound Access.

Standard Road Closure to TMC requirements



This route was agreed as the preferred option by the following parties during 2007:  
 Highways Agency, R.M.S. Gloucestershire Police and Gloucester County Council

ROUTE 6

A417 Northbound Closed  
Between  
Spine Road Junction  
And  
Burford Road Interchange





# CLOSED BETWEEN BURFORD ROAD INTERCHANGE AND SOUTH CERNEY JUNCTION

## A419/A417 NORTHBOUND

Diversion Route  
Symbol



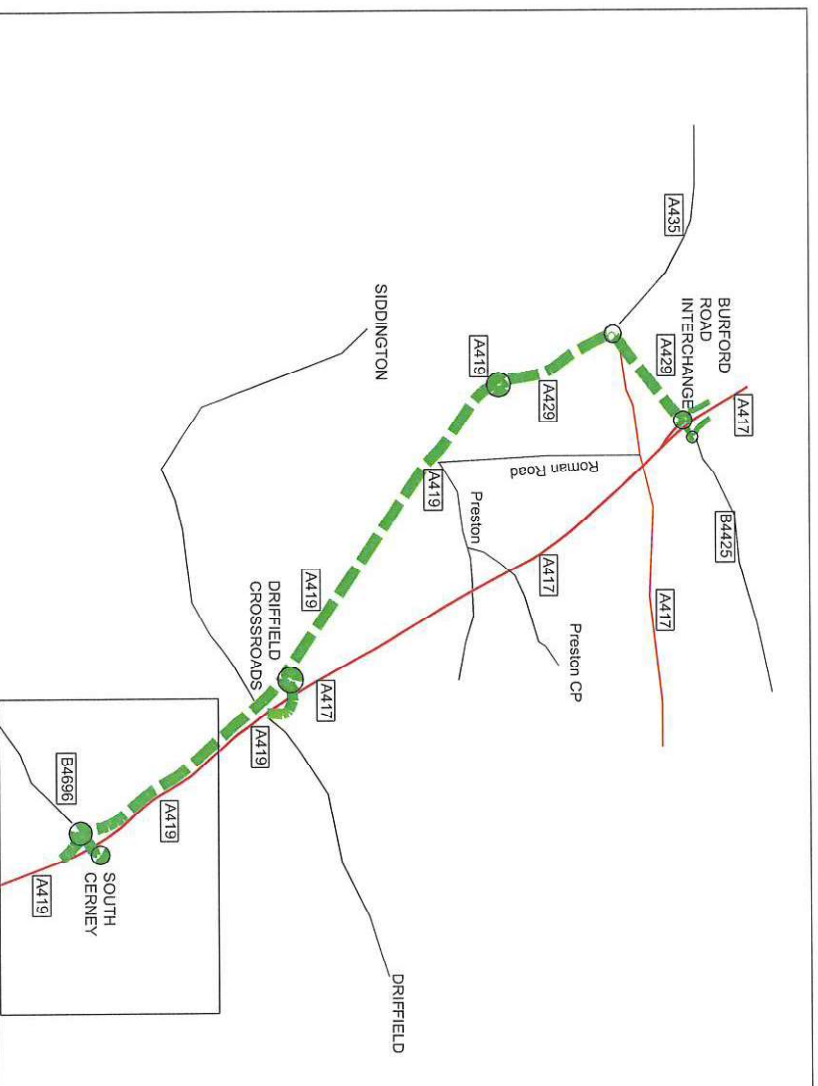
### Action Points

Step 1: Close A419/A417 Northbound carriageway at Cerney junction.  
Step 2: Open trigger signs at South Cerney junction Exit Slip Road.  
Reverse procedure at end of closure.

A417 Northbound Carriageway at South Cerney.

Northbound Exit Slip Road.

Standard Road Closure to TMC requirements



This route was agreed as the preferred option by the following parties during 2007:  
Highways Agency, R.M.S., Gloucestershire Police and Gloucester County Council

**HA HIGHWAYS**  
AGENCY

**mouchel**

Diversion Route 6 (Northbound)  
Oct 2008



## ROUTE 6

A417 Southbound Closed  
Between  
Burford Road Interchange  
And  
Spine Road Junction



# CLOSED BETWEEN CIRENCESTER (BURFORD ROAD)AND SPINE ROAD JUNCTION.

Diversion Route  
Symbol

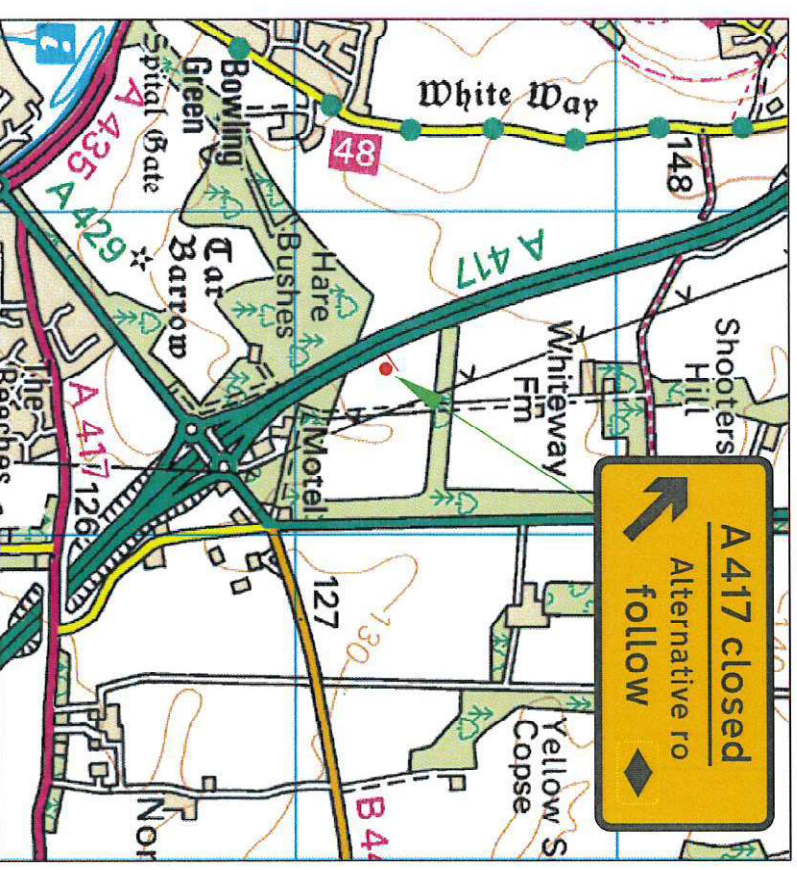
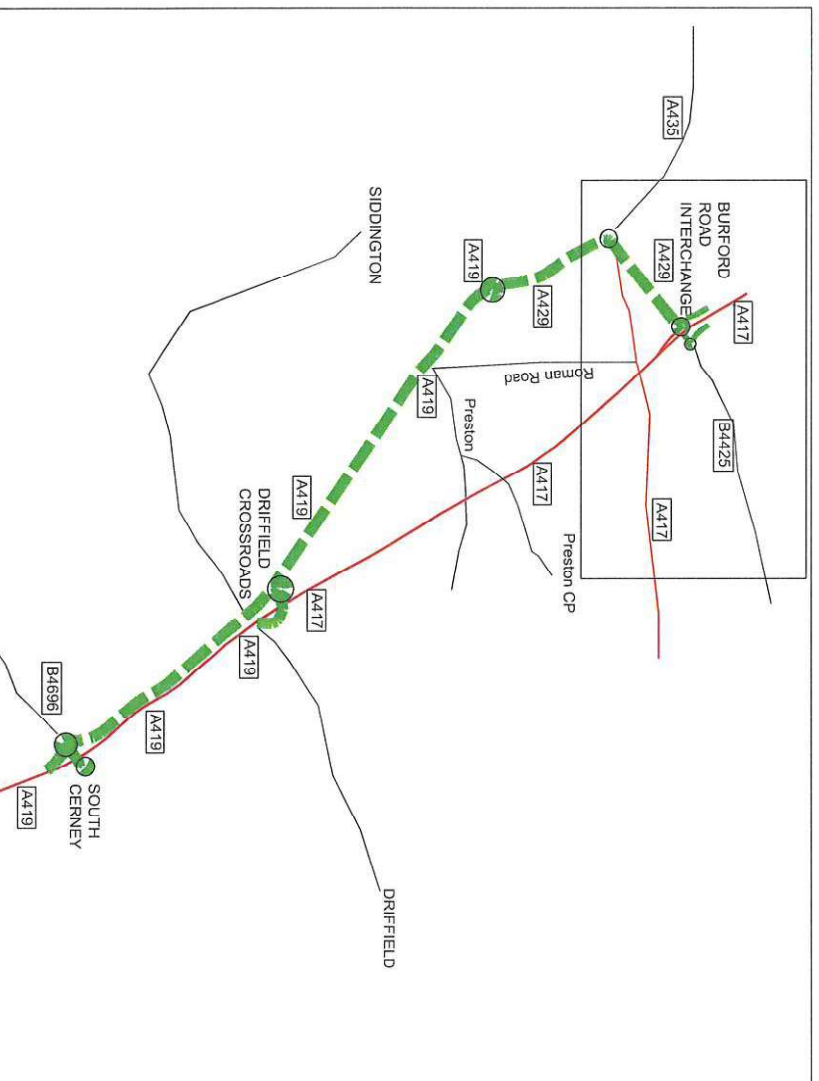


## Action Points

Step 1: Close A417/A419 Southbound carriageway at Burford Road Interchange .  
Step 2:Open trigger signs at Burford Road Interchange Exit Slip Road.  
Reverse procedure at end of closure.

A417 Southbound Main Carriageway at Burford Road Interchange Southbound Exit Slip Road.

Standard Road Closure to TMC requirements



This route was agreed as the preferred option by the following parties during 2007:  
Highways Agency, R.M.S. Gloucestershire Police and Gloucester County Council

**HA** HIGHWAYS  
AGENCY

**R** mouchel

Diversion Route 6 (Southbound)  
Oct. 2008

## **ROUTE 7**

**A419 Northbound Closed**

**Between**

**Cricklade Junction**

**And**

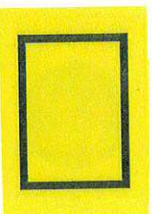
**Spine Road Junction**





# A419 NORTHBOUND CLOSED BETWEEN CRICKLADE JUNCTION AND SOUTH CERNEY JUNCTION

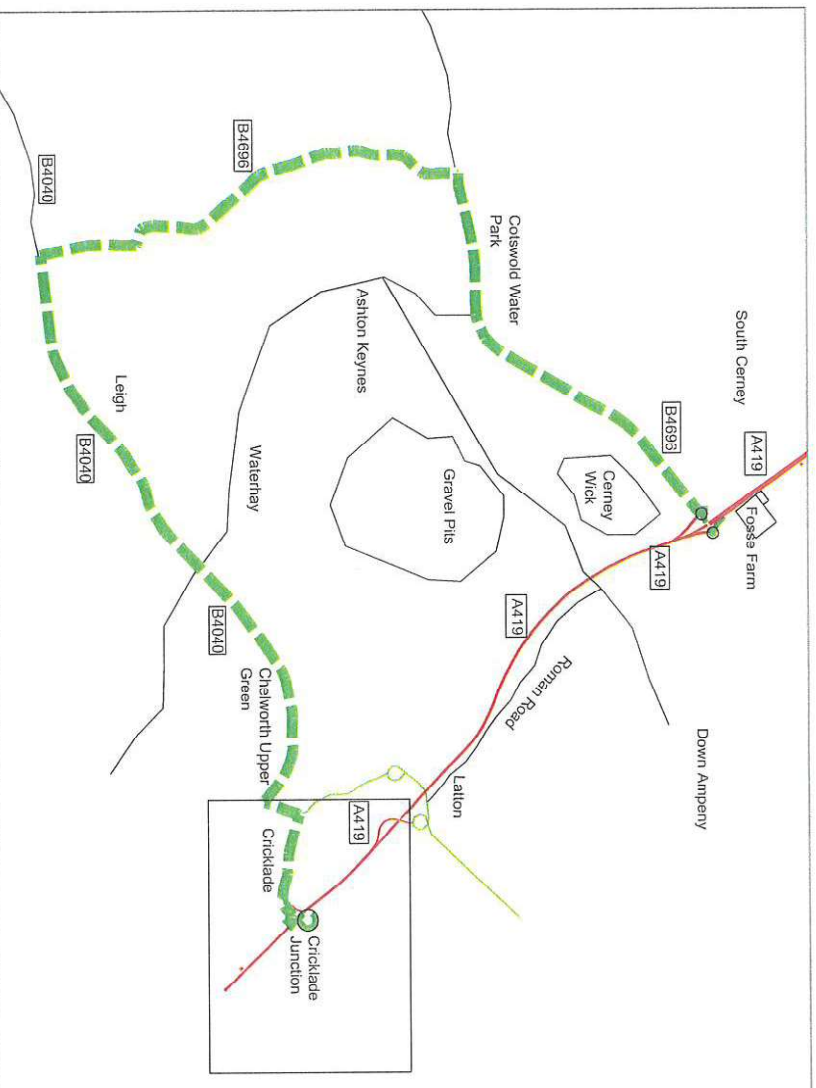
Diversion Route  
Symbol



**Action Points**  
 Step 1: Close A419 Northbound carriageway at Cricklade Junction with A4040  
 Step 2: Open trigger signs at Cricklade Northbound Exit Slip Road.  
 Reverse procedure at end of closure.

A419 Northbound Main Carriageway at Cricklade Northbound Exit Slip Road.

Standard Road Closure to TMC requirements



This route was agreed as the preferred option by the following parties during 2007:  
 Highways Agency, R.M.S. Gloucestershire Police and Gloucester County Council

## ROUTE 10

A419 Northbound Closed  
Between  
M4 Junction 15 Roundabout  
And  
Commonhead Roundabout



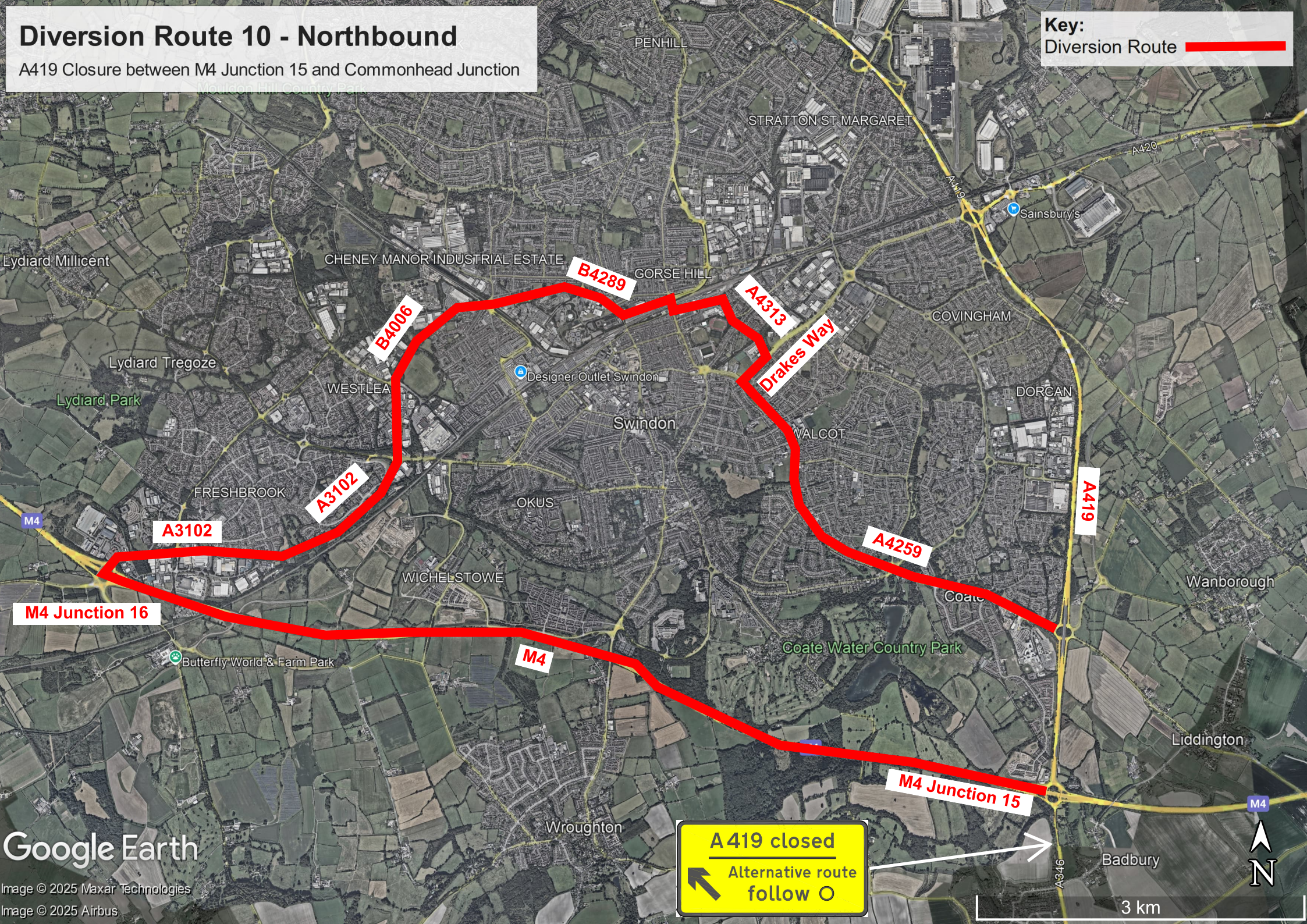


# Diversion Route 10 - Northbound

A419 Closure between M4 Junction 15 and Commonhead Junction

Key:

Diversion Route



Google Earth

Image © 2025 Maxar Technologies  
Image © 2025 Airbus

A 419 closed

Alternative route follow O

3 km





## **ROUTE 11**

**A419 Northbound Closed  
Between  
Commonhead Roundabout  
And  
White Hart Roundabout**



# A419 NORTHBOUND

## CLOSED BETWEEN COMMONHEAD ROUNDABOUT AND WHITE HART ROUNDABOUT.



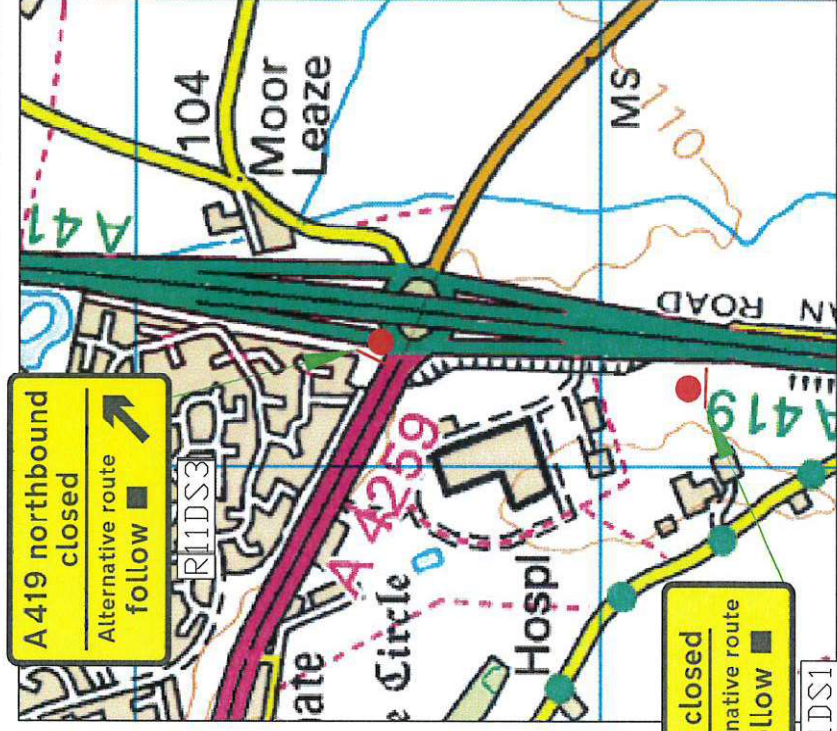
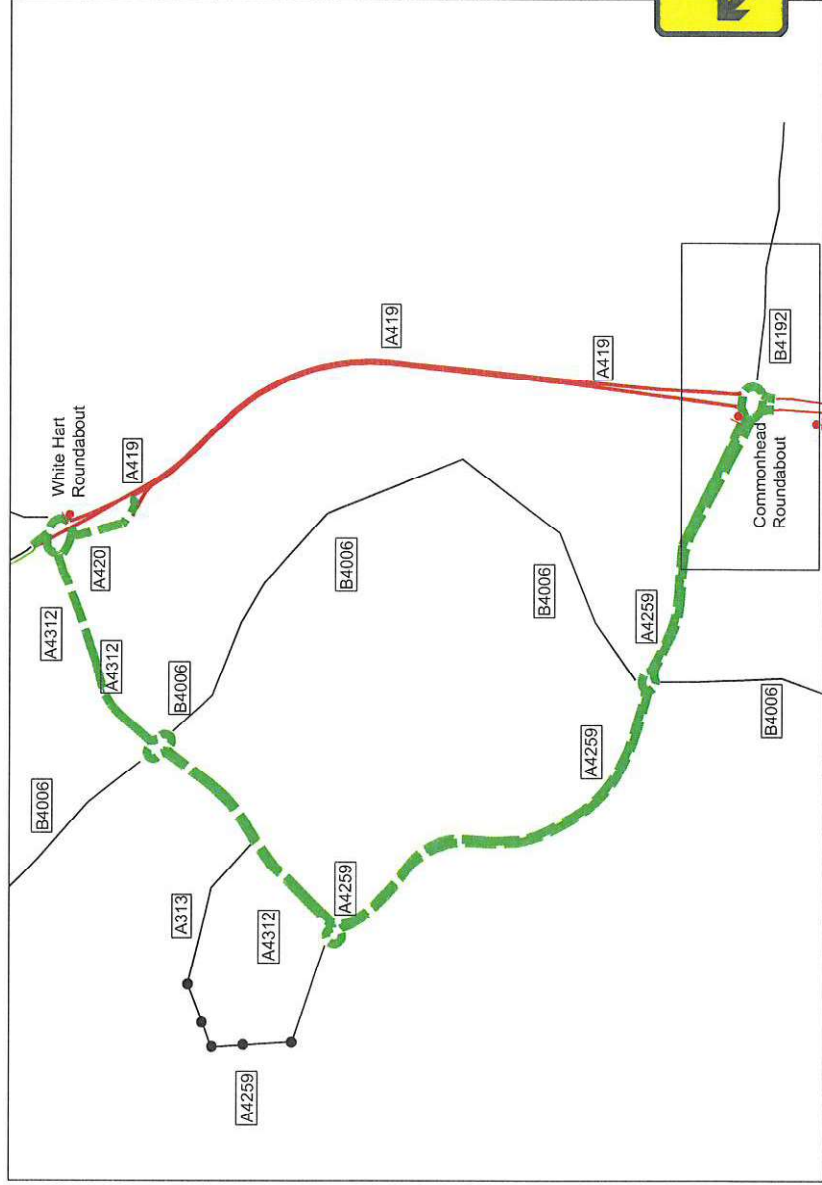
Diversion Route  
Symbol

### Action Points

- Step 1: Close A419 at Northbound carriageway at Commonhead roundabout junction with A4259.
- Step 2: Open trigger signs at Commonhead roundabout Northbound Exit Slip Road.
- Reverse procedure at end of closure.

A419 Northbound Carriageway at Commonhead Roundabout.

Standard Road Closure to TMC requirements



This route was agreed as the preferred option by the following parties during 2007:  
Highways Agency, R.M.S. Gloucestershire Police and Gloucester County Council

**HA** HIGHWAYS  
AGENCY

**mouchel**

Version  
A  
Diversion Route 11 (Northbound)  
Date  
Oct 2008



## **ROUTE 12**

**A419 Northbound Closed  
Between  
A420 White Hart Roundabout  
And  
Turnpike Junction**



# A419 NORTHBOUND

## CLOSED BETWEEN WHITE HART ROUNDABOUT AND TURNPIKE JUNCTION.



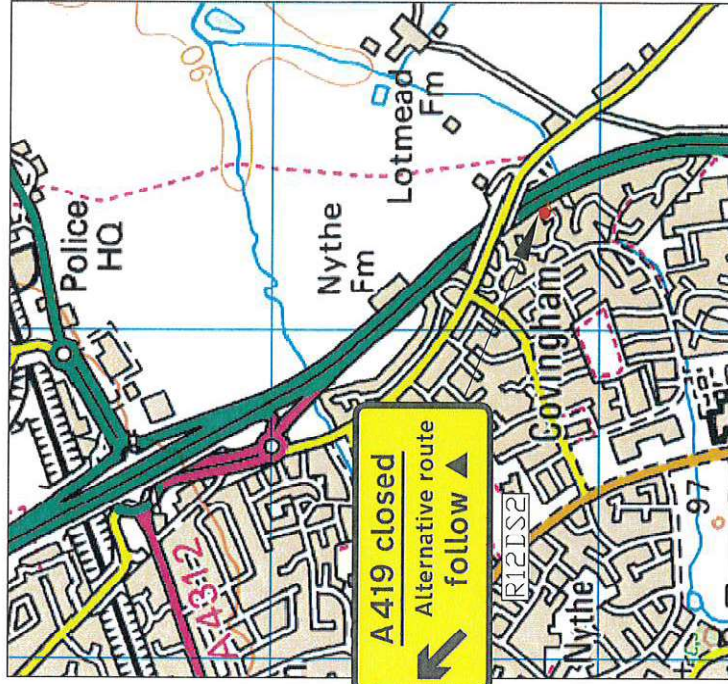
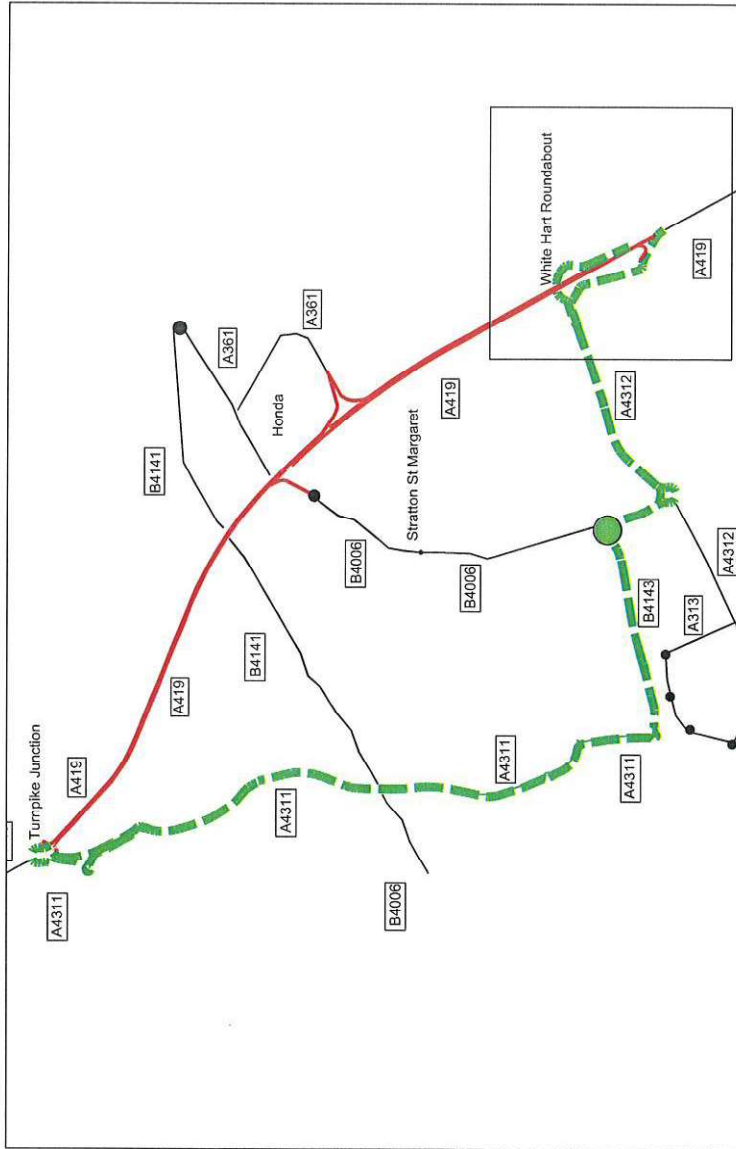
Diversion Route  
Symbol

### Action Points

- Step 1: Close A419 at Northbound carriageway at White Hart Roundabout junction with A420.
- Step 2: Open trigger signs at White Hart Northbound Exit Slip Road.
- Reverse procedure at end of closure.

A419 Northbound Carriageway at White Hart Roundabout.

Standard Road Closure to TMC requirements



This route was agreed as the preferred option by the following parties during 2007:  
Highways Agency, R.M.S. Wiltshire Police and Wiltshire County Council

**HA HIGHWAYS AGENCY**

**mouchel**

Diversion Route 12 (Northbound)  
B  
Dec 2008

**ROUTE 12**

**A419 Southbound Closed**

**Between**

**Lady Lane Junction**

**And**


**A420 White Hart Roundabout**





# A419 SOUTHBOUND

## CLOSED BETWEEN TURNPIKE JUNCTION AND WHITE HART ROUNDABOUT.



Diversion Route

Symbol

Action Points

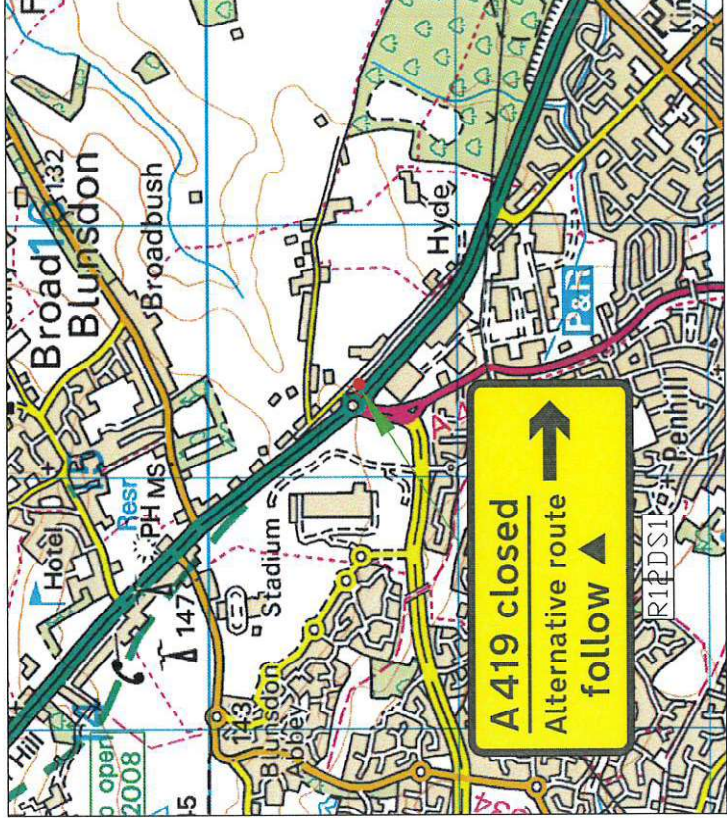
Step 1: Close A419 at Southbound carriageway at Turnpike Junction A4311.

Step 2: Open trigger signs at Turnpike Junction Southbound Exit Slip Road.

Reverse procedure at end of closure.

A419 Southbound Carriageway at Turnpike Junction.

Standard Road Closure to TMC requirements



This route was agreed as the preferred option by the following parties during 2007:  
Highways Agency, R.M.S, Gloucestershire Police and Gloucester County Council



## ROUTE 14

A419 Northbound Closed

Between

Turnpike Junction

And

Spine Road Junction





# A419 NORTHBOUND

## CLOSED BETWEEN TURNPIKE JUNCTION AND SPINE

### ROAD JUNCTION

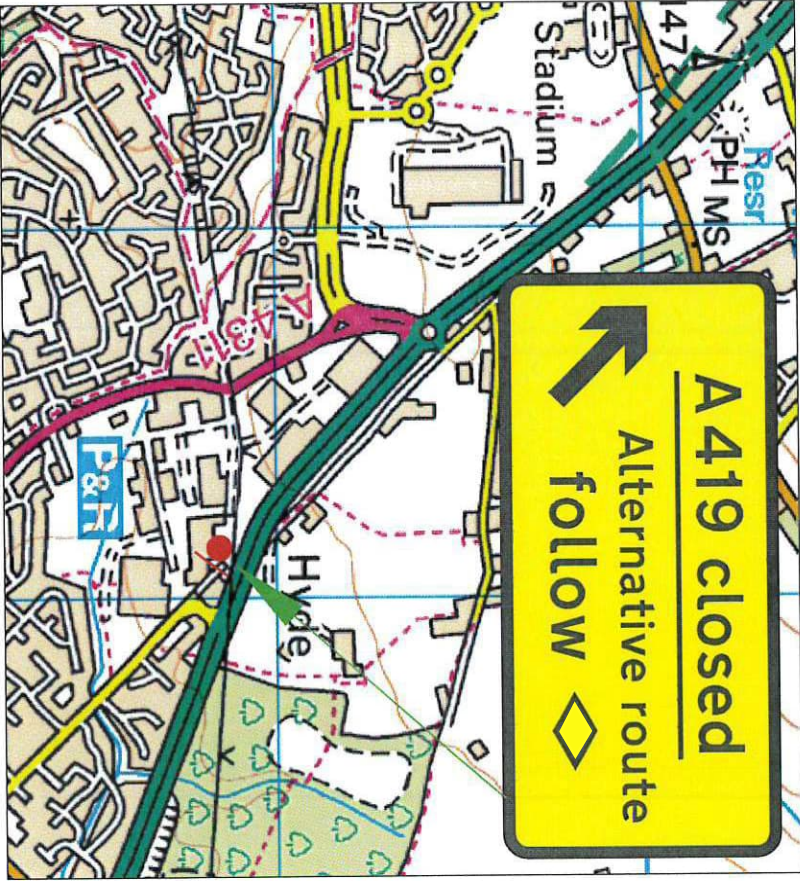
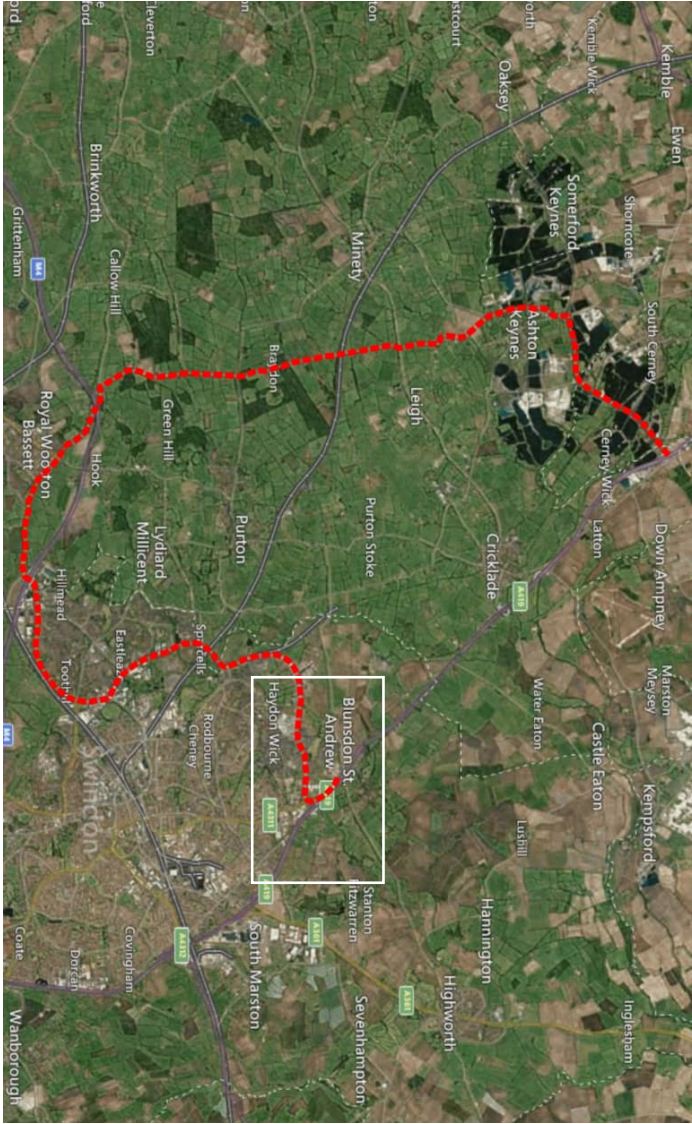
Diversion Route  
Symbol



Action Points

- Step 1: Close A419 Northbound carriageway at Turnpike Junction with A4311.
- Step 2: Open trigger signs at Turnpike Junction Northbound Exit Slip Road.
- Reverse procedure at end of closure.

Standard Road Closure to TMC requirements



This route was agreed as the preferred option by the following parties during 2007:  
Highways Agency, R.M.S. Gloucestershire Police and Gloucester County Council



Diversion Route 14 (Northbound)  
Aug 2024

## ROUTE 14

A419 Southbound Closed  
Between  
Spine Road Junction  
And  
Lady Lane Junction





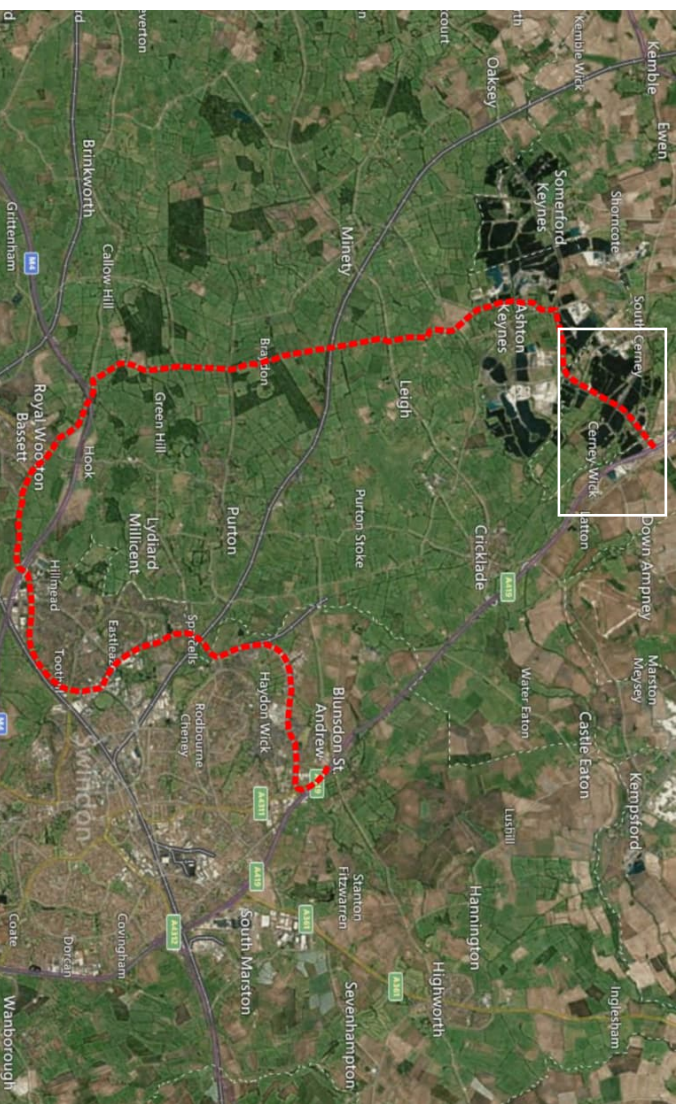
# A419 SOUTHBOUND CLOSED BETWEEN SPINE ROAD JUNCTION AND LADY LANE JUNCTION

Diversion Route  
Symbol



**Action Points**  
 Step 1: Close A419 Southbound carriageway at Cerney Junction with B4696.  
 Step 2: Open trigger signs at South Cerney Southbound Exit Slip Road.  
 Reverse procedure at end of closure.

A419 Southbound carriageway at Cerney Junction with B4696.  
 Standard Road Closure to TMC requirements



This route was agreed as the preferred option by the following parties during 2007:  
 Highways Agency, R.M.S. Gloucestershire Police and Gloucester County Council