

The Veterinarian's Role in Catastrophic Events: Private Practitioners



**P. N. KLEIN, MS VMD DACPV DACVPM
*VMAT-2 TEAM COMMANDER,
MDSART – EXECUTIVE BOARD, AND
USDA/APHIS VETERINARY SERVICES - VMO***

**POTOMAC REGIONAL
VETERINARY CONFERENCE
*12 NOVEMBER 2011***



Acknowledgements



- AVMA – Heather Case, DVM
- VMAT2 team
 - Jack Casper, DVM
 - Denise Sharp, AHT and Donna Dyer, LVT
- PA SART – Joel Hersh, Exec Director
- MD SART – Sarah Balcom, DVM
- MDA – G.Hohenhaus, N.J.Chapman, DVM
- Tri-State Bird Rescue & Research Oil Spill Response Team
 - Heidi Stout, DVM
 - Sarah Tegtmeier, AHT



TM



Outline



- People, Animals, and Disasters
- Preparedness, Response, Recovery
- Veterinarian's Role in Disaster Response
 - Your family and clients
 - Your clinic and staff
 - Your local community
 - Your State/Region
 - National Response



Why do we need to Prepare?

- Lack of planning can increase the magnitude of the disaster.
- Planning during down time allows for mitigation of disaster – saving lives and expense.
- The impact of not having a plan could be that animals and people suffer or die.



Why do we need to Prepare?



A 2007 AVMA report indicated 60% of all households had at least ONE pet. It is currently estimated that 65% of all households own pets.

Average 2 pets/household.

- 82 M felines (32% households)
- 72 M canines (37 % households)
- 11.2 M birds (4% households)
- 9.2 M equines (2% households)
- Livestock and poultry populations (NASS, 2007)

To Prevent This from Happening

All animals left here
have died. We have buried
them for you. I have no
way of expressing my
grief. I will be here
cleaning up this. ow.
My prayers are with you.

Hurricane Katrina 2005

Human Animal Bond

AVMA Definition

- A mutually beneficial and dynamic relationship between people and animals that is influenced by behaviors that are essential to the health and well-being of both.
- This includes, but is not limited to, emotional, psychological, and physical interactions of people, animals, and the environment.



What We Know About People and Disasters

- Most people do not have a disaster plan for themselves, let alone their pets.
- Most people think they can just drive to a hotel if necessary.
- Hurricane Katrina – 96,000 sq miles affected – how far to go to find a hotel in service?
- What if the hotel has a “No Pets” policy?



What We Know About People And Disasters

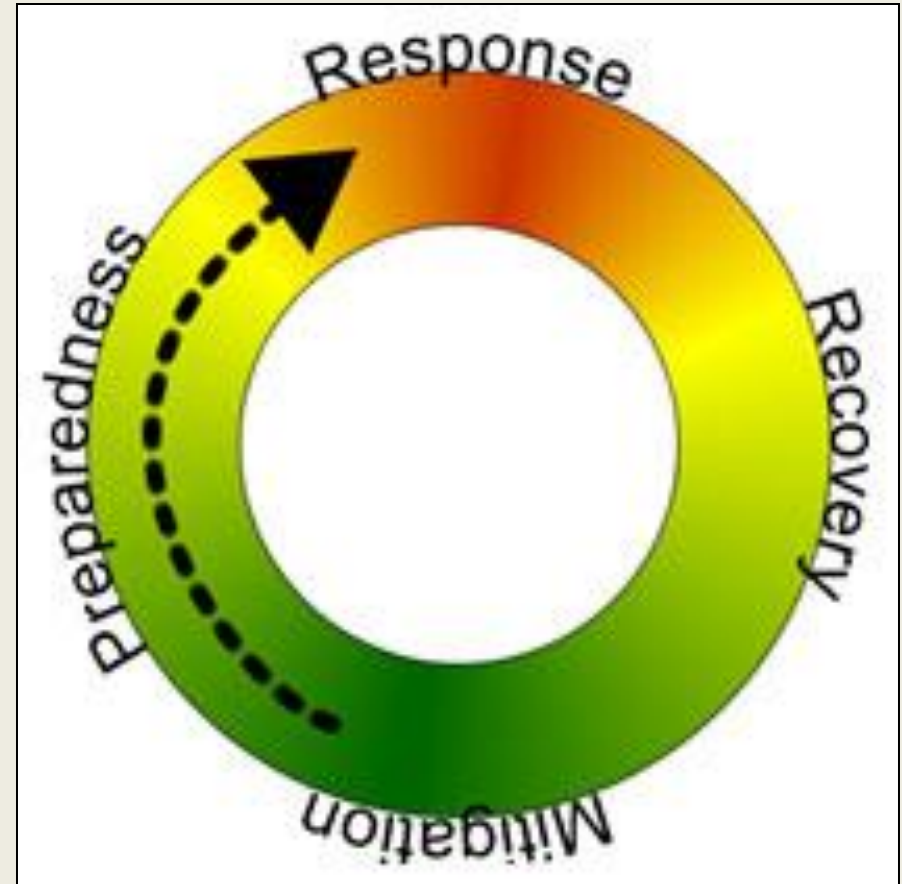
- Most people wait too long to evacuate
- At least 25% refuse to evacuate and leave pets behind
- Logistics of evacuating with multiple pets
- 50 -70% try to re-enter the impacted area to rescue their pets



What to We Mean by Disaster Preparedness?

Four Stages of Preparedness Planning

- 1) Mitigation
- 2) Preparation**
- 3) Response**
- 4) Recovery



How Disaster Plans are Created

- 1) In the absence of an immediate or recent threat of disaster
- 2) Immediately following a disaster
- 3) During the disaster



Prepare for the Expected ...



400,000



10,000



5,000



800

+ Forest fires, earthquakes, hurricanes

www.fema.training.gov

... As Well as the Unexpected



2005 Graniteville, SC train wreck and Chlorine gas release

... And the Extreme

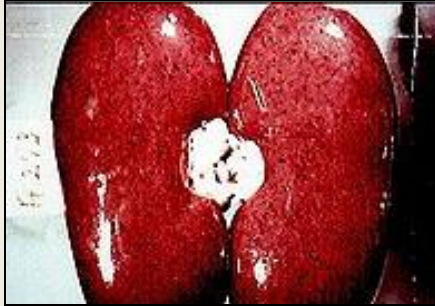
Cedar River, IA Floods
2008



Hurricane Floyd, NC
1999



... And the Catastrophic



Classical Swine Fever



Glanders



FMD



HPAI or vND



Where do we fit in?

- What is the role for veterinarians in private practice in disaster preparedness and response?
- FIRST! How could disasters affect you?
- THEN - How can you help prepare and serve:
 - Yourself and your family
 - Your practice
 - Your clients
 - Your community
 - ✦ Local /County/State
 - ✦ Regional /National



Veterinarian's Oath



- Being admitted to the profession of veterinary medicine, I solemnly swear **to use my scientific knowledge and skills for the benefit of society through the protection of animal health, the relief of animal suffering**, the conservation of animal resources, the promotion of public health, and the advancement of medical knowledge.
- I will practice my profession conscientiously, with dignity, and in keeping with the principles of veterinary medical ethics.
- I accept as a lifelong obligation the continual improvement of my professional knowledge and competence.



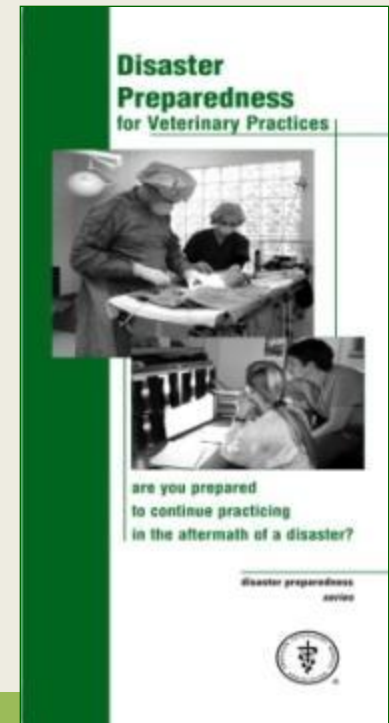
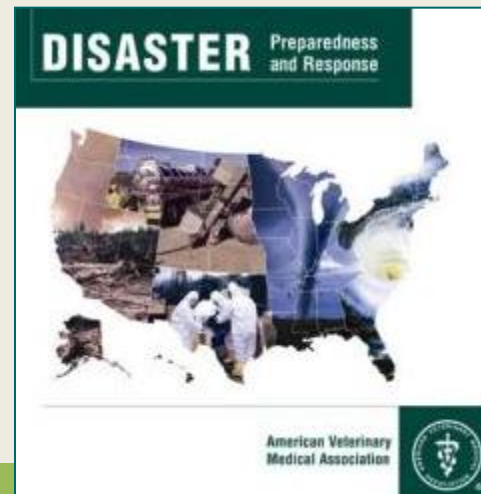
Pets Evacuation and Transportation Standards Act of 2006

- On Friday, October 6, 2006, the President signed into law:
 - H.R. 3858, the "Pets Evacuation and Transportation Standards Act of 2006," which amends the Robert T. Stafford Disaster Relief and Emergency Assistance Act [under FEMA] to ensure that **State and local emergency preparedness operational plans address the needs of individuals with household pets and service animals following a major disaster or emergency.**
- Post-Katrina Emergency Mgt Reform Act – 2006
 - Authorizes the rescue, care, and shelter to people with household pets and service animals.

How to Get Started

You don't need to re-invent the wheel!

- AVMA: www.avma.org
- State SARTs, CARTs, CERTs, MRCs
- FEMA: www.fema.gov
- USDA: www.aphis.usda.gov (VS, AC)
- NGOs:
 - ✦ Noah's Wish
 - ✦ AHA, ASPCA, IFAW
 - ✦ HSUS
 - ✦ ARC



Potential Partners

- State EMA
- State Dept Ag
- State Dept Health
- State F&G / DNR
- County/local ACOs
- Humane societies
- Veterinarians/techs
- Law enforcement
- Fire/rescue
- Animal groups – clubs
- Cooperative extension
- Farm bureaus
- Farriers
- Pet Supply industry
- Breeders
- Stables / Kennels
- Dog / Horse tracks
- Commercial Ag. Industries

Potential Partners

- Fairgrounds
- Zoos
- Wildlife parks
- Wildlife rehabbers
- FFA/ 4H
- Red Cross
- Salvation Army
- National Guard
- Food Banks

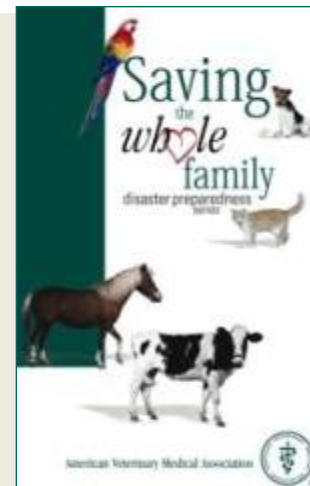
- Ambulance Services
- Commercial trucking
- Bus services
- Media
- Ham radio operators
- Parks and Recreation
- Waste Mgmt
- Utilities

Personal Preparedness

Yourself, Your family, Your clients



- Have a family evacuation plan in advance
 - When to shelter-in-place vs evacuation?
 - Where will you go?
 - Rendezvous point?
 - How will you keep in contact with each other?
- Have a list of emergency contacts – friends, neighbors, hotels – places to go within 100 miles.
- Have local contact who has access to your pets in case you are not home when a disaster strikes.
- When you evacuate, leave note on your door that you have left with your pets.



Personal Preparedness

Yourself, Your Family, Your Clients

Assemble a Pet Disaster Kit

- Hold all pet supplies for at least 3 days
- Airtight/waterproof is best
- Include:
 - Photo of your pet(s) with you
 - Pet's medical records and vet contacts
 - Pet's medicines
 - Pet ID's: leashes, collars, microchip tags
 - Carriers – one per pet
 - Blankets, bedding, toys
 - Bottled water/ food (for each pet X 3 days)



Other ways to help your clientele



- Encourage microchipping and tattooing for permanent ID
 - **Also keep pet ID on collars and harnesses**
- Provide copies of medical and vaccination records
- Provide information and resources on family disaster preparedness and emergency kits for pets
- Encourage farm clients to establish a “sister” farm that can help transport or accommodate their livestock in a disaster
- Offer guidance on where on the farm to “shelter animals in place” during a flood, barn fire, or blizzard
- Encourage milking farms to maintain a generator for emergencies

Disaster planning for Animal Facilities

Why do animal facilities need a disaster plan?

- OSHA requires that all facilities with 10 or more employees have a written contingency plan.
- To protect lives – both human and animal.
- Pet owners will look to the veterinary community for guidance.
- To lessen the overall impact of the disaster to your business.

Create a Written Business Plan



A well-written business plan will greatly aid in recovery and should include:

- History , philosophy & services of practice
- Future plans & objectives
- Practice organization – who's responsible for what?
- Marketing plan
- Financial planning
- **Disaster / Contingency / ConOps plan**
- Conclusions & executive summary

Contingency/ConOps Plan



- Minimize or prevent the impact of a disaster – “*What if...?*”
- Provide an organized response
- Ensure continuity of business until normal operations restored
- Identify vulnerabilities
 - What are dangers to the structure?
 - How long could the impact last?
- Identify the most valuable or irreplaceable items and create plans to preserve and protect them



Create a Disaster Planning Team



- Involve all stakeholders – owners and employees – in the planning process.
- All Employees must have their own disaster plan
 - Recommend they maintain their current vaccinations
 - Understand animal behavior and stress management
 - Some staff trained to HAZMAT awareness level
 - Some staff trained in CPR
- Be sure your facility is part of the overall community emergency plan.
- Divide your facility plan into manageable parts and assign specific sections to team members

Facility Disaster Plan



Mitigation	Insurance	Training
Client Education	Communications	Emergency Supplies
Records	Inventory & Equipment	Evacuation & Transportation
Housing or Sheltering	Documentation	Damage Assessment

Emergency Supplies-People



- Potable water, store 1 gallon/person/day
- Food, at least a 3-day supply/person
- Battery-powered radio and extra batteries
- Flashlight and extra batteries
- Whistle to signal for help
- Refrigeration (ice)
- Moist towelettes for sanitation
- Tool kit with wrench or pliers to turn off utilities
- Plastic sheeting and duct tape to "seal a room"
- Garbage bags and plastic ties for personal sanitation

Emergency Supplies - Animal

- Portable fencing
- Collapsible kennels
- Leads, halters
- Collars, leashes
- ID bands
- Carriers
- Cleaning supplies
- Refrigeration
- Sheets to cover kennels
- 24/7 vendor contact
- Food, can openers
- Potable water
- Fire extinguishers
- Flashlights, batteries
- Tarps
- Ropes
- Hoses



Evacuation & Transportation

- Identify criteria/triggers for evacuation procedures
- Develop procedures that ensure no animals are left behind
- Pre-arrange animal transportation:
 - Vehicles w/proper ventilation
 - Horse/animal trailers
- Plan ways to minimize stress to the patients.
- Consider the mental and physical well-being of the patients.



Emergency Relocation of Animals

- Establish “sister” hospitals to share the facility if one practice hit by disaster.
- Pre-determine your evacuation, destination and plot various/ alternate routes
- Develop method to account for all patients leaving, en-route, and on arrival of destination
- Client & animal ID /phone #s

**Competition for resources
during the disaster event!**



Insurance

- Business interruption
- Extra Expenses
- Professional Extension
- Personal property
- Fire and water Coverage
- Debris removal
- Civil Ordinance Coverage



www.avma.org/disaster and www.avmaplit.com

Documentation



- Document survivors – cage cards may have been destroyed, and collars may have fallen off
- Or to prove loss of life for legal claims.



Community Disaster Plan

- Damage assessments
 - Animal rescue
 - Evacuations
 - Temporary shelters
 - Human shelters (only)
 - Pet friendly shelters
 - Co-located shelters
 - Assistance for service animals
- Emergency veterinary care
 - Foster care programs
 - Volunteer coordination
 - Donations management





Community Disaster Plan



Temporary Shelters	Recovery Site	Animal Care
Assessment / Rescue	Volunteer Coordination	Donations Management
Supply Procurement	Equipment	Transportation
Identification	Communication	Public Relations

Know Where You Fit In



- What you bring to the table
 - What are your skills
 - What are your strengths and weaknesses
 - What you can provide in resources
 - What are your professional networks and connections
- **Work within the system**
 - Learn ICS –
<http://www.fema.gov/emergency/nims/NIMSTrainingCourses.shtm>
 - Don't free lance!
 - Do what you are **needed** to do – not want you want to do
 - Don't overstay your welcome 😊

Get Involved!!



Local/ County Animal Response

- CARTs
- CERTs
- American Red Cross (County Chapters)
- NGOs / Non-profit organizations – local chapters
 - Noah's Wish
 - HSUS – DART
 - AHA, ASPCA, etc
- Local Humane Societies, Animal Shelters

Companion Animal Response Public-Private Partnership



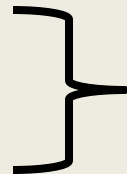
Credit: Arnold L. Goldman DVM, MS

Get Involved!!



State /Regional Animal Response

- SART – www.ncsart.org
- State Volunteer Medical Reserve Corps
- State VMA
- AVMA /VMAT – www.avma.org/vmat
- NGOs / Animal Welfare organizations
 - Noah's Wish
 - IFAW, AHA, ASPCA
 - HSUS – DART



NARSC



SART
NORTH CAROLINA
STATE ANIMAL RESPONSE TEAM
ANY ANIMAL, ANY DISASTER, ANYWHERE

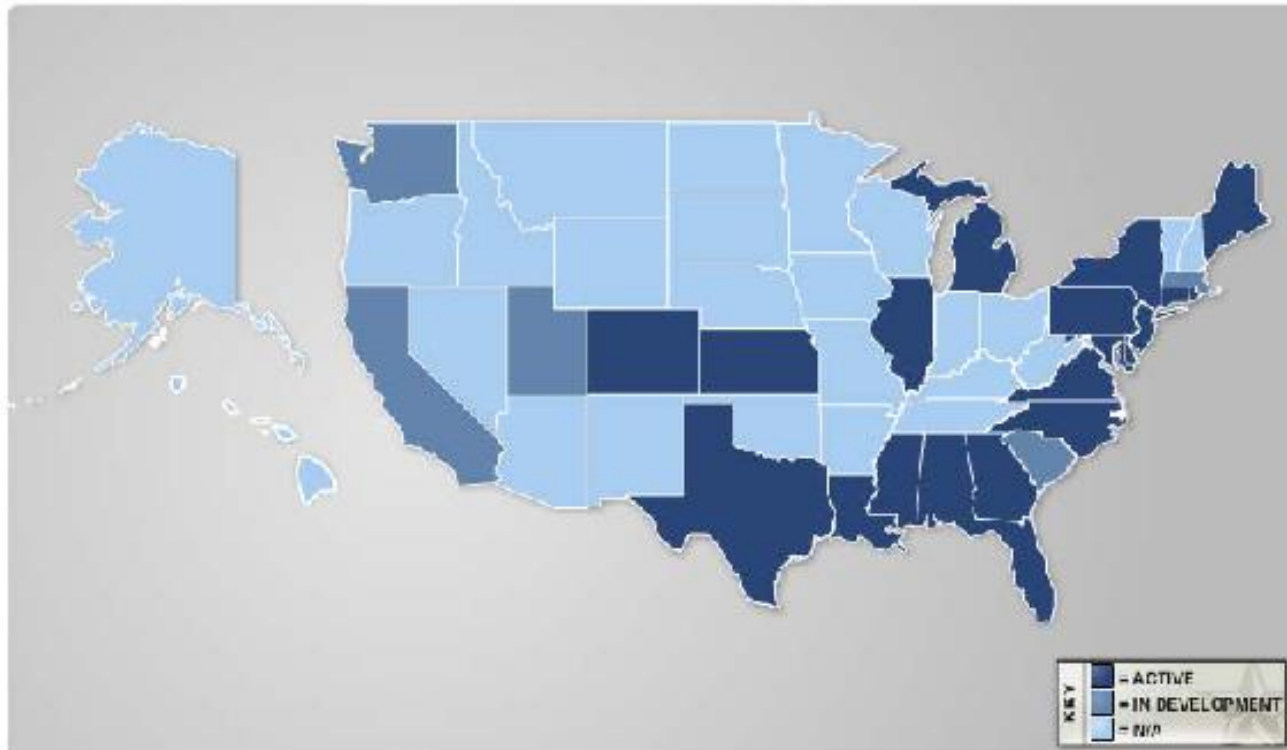
HOME ABOUT COUNTIES WHO WE HELP SPONSORS PARTNERS & DONORS

PROVIDING PREVENTION RESPONSE & RECOVERY FOR ANIMAL EMERGENCIES

HOME > SART STATES

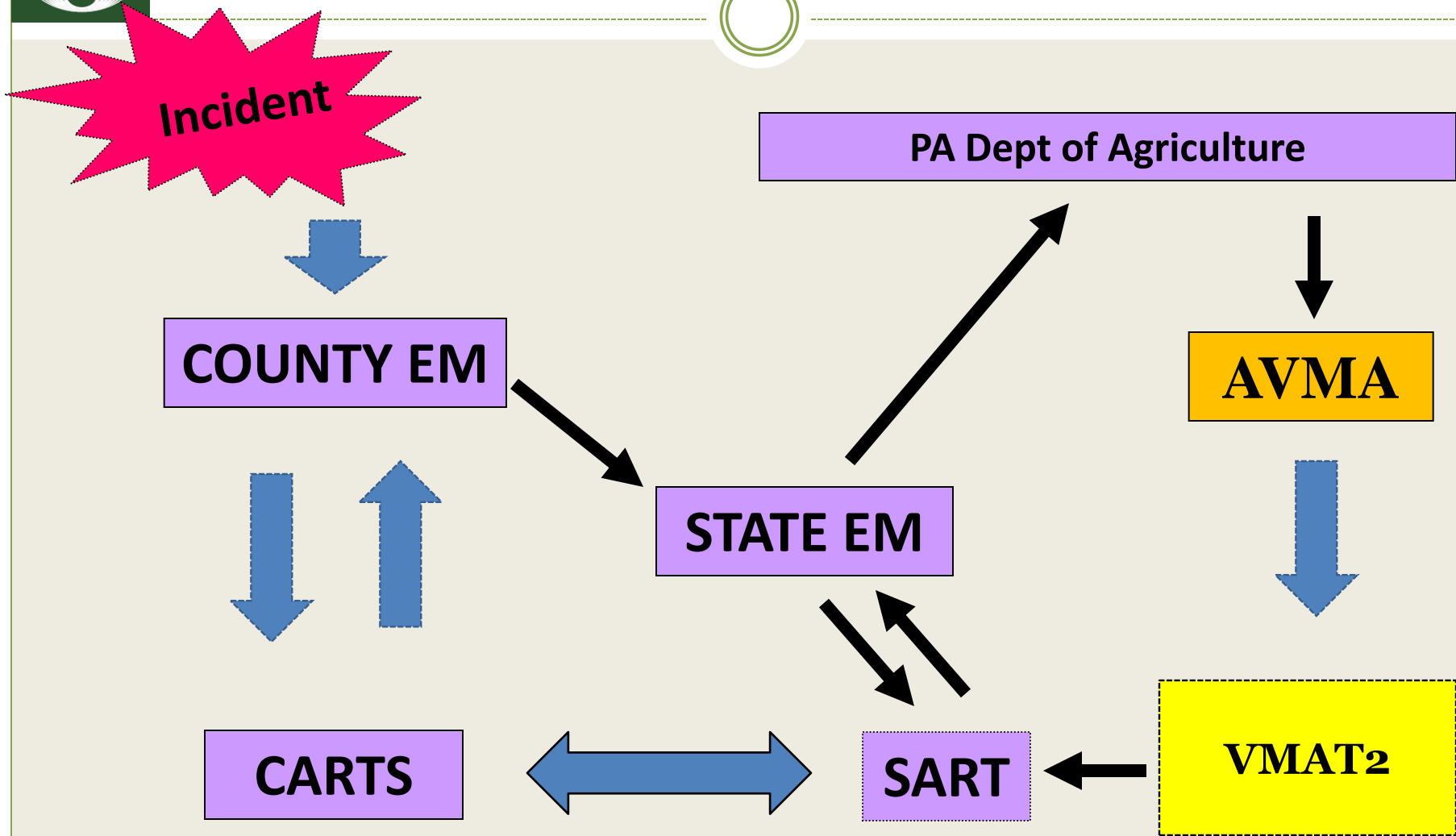
SART STATES

[DONATE](#) [VOLUNTEER](#) [CONTACT](#)





PASART – VMAT Activation



Get Involved!!

National Animal Response

- HHS/NDMS – NVRT
 - <http://www.phe.gov/Preparedness/responders/ndms/teams/Pages/nvrt.aspx>
 - USDA/APHIS/VS – NAHERC
 - http://www.aphis.usda.gov/animal_health/emergency_management/naherc.shtml
 - NGOs/Animal Welfare organizations
 - IFAW
 - ASPCA, AHA
 - Code 3 Associates
 - Noah's Wish
- NARSC**



Resources



- www.fema.gov
- www.aphis.usda.gov
- www.phe.gov (NVRT)
- www.ncsart.org
- www.mdsart.org
- www.pasart.org
- www.virginiasart.org
- www.avma.org
- www.ifaw.org
- www.aspca.org
- www.americanhumane.org
- www.hsus.org
- www.redcross.org
- www.tristatebird.org

Thank You!!!



patriceklein@hotmail.com