



EMPOWR

- Health Collective -

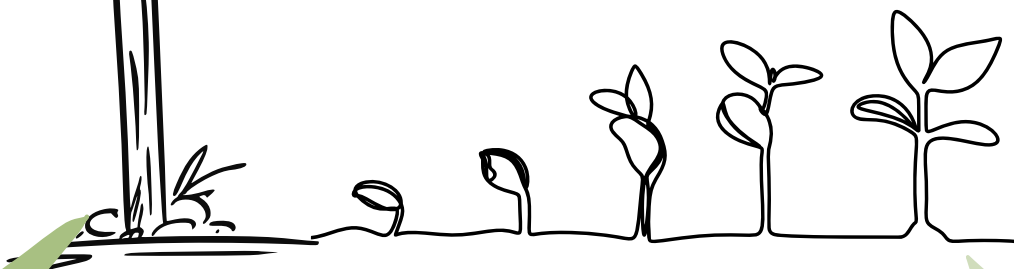
Seeking Expressions of Interest



We are seeking passionate and diverse Allied Health Practitioners interested in joining our contractor team and growing with our collective.

Empowr is a private practice that values connection, and diversity, while providing holistic and empowering, quality services to the communities around us.

Opportunities to join us are available to those who are eligible Medicare providers including (but not limited to) clinical/general psychologists, speech pathologists and occupational therapists.





ABOUT US

This is an exciting time for us as we near the launch of **EMPOWR** Health Collective in the stunning coastal town of Nelson Bay (NSW) ~ Feb 2025. Our mission is to offer a wide range of therapeutic services including face to face, groups, community based and online, diagnostic assessments, and training to our surrounding coastal community.

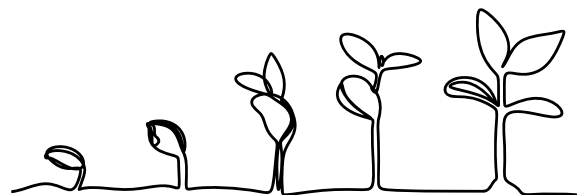


Providing a supportive and safe space for growth for both clients and the **EMPOWR** team, is important to us. We seek to grow a dynamic team with motivated, compassionate and knowledgeable practitioners that bring diverse skill sets, flexibility, holistic approaches and professional integrity.

EMPOWR will have core opening times Monday to Friday from 8am with flexible options to include Saturdays and late closing times till 7pm. The practice is street level, has ample parking facilities and all ability access. Our private practice is fee-for-service with modest competitive service rates.

THE REWARDS

- Being a valued member of a multi-disciplinary team, within a friendly and collaborative environment
- A modern, comfortable and aesthetically pleasing work space with large, well equipped rooms, ready for your day with only your laptop device needed.
- Cloud based user friendly IT systems and a highly experienced administrative support team, allowing a focus on clinical and therapeutic delivery without the worries of navigating compliance, unnecessary paperwork, revenue or diary management.
- Peer supervision available individually and in planned group meets, with a program of clinical team development and CPD sessions.
- Flexible working conditions and negotiable hours that support a healthy work life balance.
- A workplace that values connection, innovation and is committed to culture, diversity, equity and inclusion





EMPOWR

- Health Collective -

HOW TO APPLY

If you are interested in joining the team as one of our valuable contractors, please email administration on contact@empowr.com.au with an expression of interest attaching your resume detailing your experience and qualifications, and a cover letter addressing the following:

- What interests you in the position?
- How do you imagine yourself providing services as part of the **EMPOWR** Health Collective team (you are invited to be creative and innovative here!)
- What would you like your work week to look like? e.g. number of clients per day, therapeutic focus, number of days per week, ideal working days
- The strengths you bring, areas of specialised interventions, interest and or professional development

REQUIREMENTS

- Relevant qualification in an allied health field (e.g. Psychology, Clinical Psychology, Speech Pathology, Occupational Therapy) with AHPRA registration.
- Registered with Medicare to provide services
- Current Working With Children Check
- Professional Indemnity Insurance
- Enjoys working collaboratively and is confident to work independently and unsupervised as needed
- Proactive professional who is organised and effectively manages their time
- Competence in navigating Microsoft Office and sufficiently computer literate
- Able to build and maintain successful professional relationships.
- Competent in working therapeutically with diversity and cultural sensitivity

We look forward to hearing from you



0489061190



contact@empowr.com.au



www.empowr.com.au

Coming SOON to Nelson Bay NSW 2315