

# CATTLE HANDLING & LIVESTOCK EQUIPMENT



**Cattle Guards**  
Constructed with all new material.

Cattle guard kits with used pipe available

**Feedbunks** 20-ft x 38-in x 12-in (constructed with 10ga & heavy tube legs) other sizes & bottomless available



Portable Panel Trailer:  
\$2,800

Head Catch:  
\$895



## Free Standing Panels



Portable Loading Chute



**Portable Panels** All panels are constructed with 12 & 14ga 1.66" OD tubing 10-ft heavy portable panels, 12-ft standard portable panels (*Will latch to Winkel panels*)



**Heavy Duty Hay Feeders**  
Designed to waste less hay

## FIRE UNIT: Slide-in Water Tank



## ATTACHMENTS



Pallet Forks



Bale spears



Box Scraper

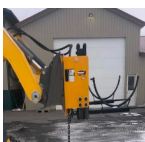
## POST DRIVERS

**Montana Post Driver**



750R: \$6,800  
1000E: \$9,100  
1500E: \$11,500

**T-Rex Post Driver**



Fork Mount: \$2,750  
Center Mount: \$3,400  
Side Mount: \$4,200

**Redi Driver Classic**  
\$1,575



**10 FREE**  
Brace Rails  
with Purchase

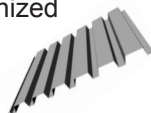
# FENCING

## Suspension Fencing -

A more durable & lower maintenance alternative with Polyethylene Superstays and Superconnector Posts



**SuperSteel / Steel Decking** 36"x24' 22ga Prime galvanized Super Steel  
Use for windbreaks, corrals, etc.



hardware \$39 | Wire gate latches for 2-7/8 posts \$23.00

**Continuous Fence**  
6-rail 1-1/4" 14ga. 20-ft long  
6-rail 1.66" 14 ga 20-ft long



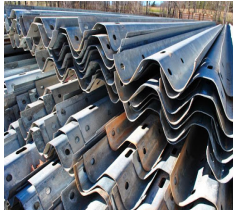
**Bolt together fence brace** | Brace rail with Wire gate latches for

## POSTS

2-7/8" x 6-ft  
2-7/8" x 8-ft  
2-7/8" x 10-ft  
5-in galvanized octagon 9'9" posts *Pipe posts can be cut to length.*



**Used guardrail**  
2-rail & 3-rail  
Plus, guardrail galvanized I-Beam Posts 9-ft



## GATES

All gates are constructed with 12 & 14 ga 1.66" OD tubing  
10-ft bow gates \$360  
12-ft bow gates \$417  
Corral gates - 6-bar  
8-ft \$190  
10-ft \$200  
12-ft \$220  
14-ft 240  
16-ft \$250

Pipe Caps in various sizes

# HEDMAN INC

AG & STEEL SUPPLY

406.390.1110

## CALL US FOR ALL YOUR STEEL NEEDS!

## STEEL

Pipe, Tubing (Round & Square) & Angle Iron



5" Galvanized octagon tubing (39-ft lengths)

**Used 2-3/8 & 2-7/8 pipe**  
Semi load quantities of used 2-3/8 & 2-7/8 pipe available - Call for delivered prices!



1.25" 14ga round tubing  
1.66" 14ga round tubing

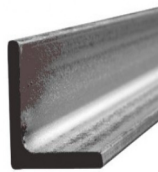
Secondary Square Tubing Various sizes available



## Surplus

**Angle Iron**

2x2x.120 &  
2x3x.250  
20-ft lengths



**A lot more steel...too much to list - Call us for details!**

## NEW INVENTORY

## COMPOSITE SHEETING

5-ft x 8-ft x 3/4-in



# HEDMAN INC

406.390.1110

**Used 2-3/8 & 2-7/8 Pipe**

**Semi load quantities of used 2-3/8 & 2-7/8 pipe available - Call for delivered prices!**

## MISCELLANEOUS

**Tow Ropes** Various sizes up to 200,000-lb breaking strength



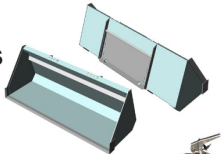
**Heavy-Duty Cable** 1-3/8"



**New HDPE Pipe:** 20" OD / 16" ID | 2" thick | 50-ft length



**Skidsteer Light Material Buckets**  
(Constructed with 3/16-in plate)



2.5-gal Water Fire Extinguishers: \$120  
Extinguisher Mount: \$40



**Buckhorn Centerflow Seed Boxes**

Steel Work Benches 8-ft \$370



Skidsteer Plates: \$178  
Bale Spears: \$85



**Diablo Metal & Wood Cutting Saw Blades**



2"x27' Ratchet Strap: \$14

5/16" Grade 70 Transport Chain: 20' @ \$47

3/8" Grade 70 Transport Chain: 20' @ \$63

Lever Chain Binders 5/16-3/8": \$28.50

Ratchet Chain Binders 5/16-3/8": \$35



**Gopher Bait & Mouse Poison + Bait Boxes**

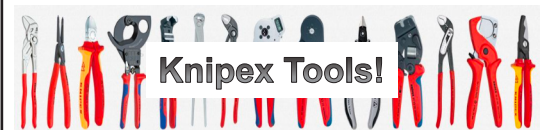


## Slide-In Water Tank

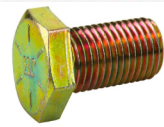


Perfect for a dump truck!

1,600-gal tank, hydraulic driven pump, heavy duty frame, spray bars included



**Knipex Tools!**



**BOLTS** \$3.75/lb Grade 5 & \$5.70/lb Grade 8 | Metric bolt assortment with 72-hole bin

ESAB Wire Flux Core .045 \$5.90/lb

**ACDelco**



**BATTERIES**  
Stocking Heavy Equipment to 1/2-Ton Pickup Batteries

# HEDMAN INC

406.390.1110