

# HEDMAN

INC

AG & STEEL SUPPLY  
406.390.1110



Now offering the newest generation of livestock prods on the market! The Hornet 2600 livestock prods by HerculesAG are rechargeable, impact and water resistant

CALL US AT 406.390.1110 FOR ALL YOUR STEEL NEEDS

**EXCITING NEWS**

Hedman, Inc. is now your local Redneck Blinds dealer!



Stocking the 6x6 and 6x7 Hunting Box Blinds



### 8' Hydraulic Freedom Trailer

Length: 196"  
Width: 95"  
Height with blind: 109"

**Key Features:** Dexter 3,500-lb axle, 3/16" square tubing for the main frame, blind support structure is 1/8" square tubing, 8-ft to the top of the base when extended, 11-12-ft of height at line of site from blind, 4 outrigger jacks, and electric over hydraulic pump system

## CATTLE HANDLING & LIVESTOCK EQUIPMENT

**Calf Shelters** | 8-ft x 23-ft

**Cattle Guards** | Constructed with all new material. Cattle guard kits available.

**UTV Cattle Guards** | EZ Installation w/ overhead \$900

**Feedbunks** | 20-ft x 38-in x 12-in | 1ga & Heavy-duty legs | Additional sizes and bottomless available

**Free Standing Panels**

**Hay Chix Hay Nets**

**Heavy-Duty Hay Feeders** | Designed to waste less hay | Single, double, triple bale options + Horse hay feeders

**Insulated & Uninsulated Fiberglass Water Tanks** | 5x12 & 7x12 | Single & Double Drinkers Available | 7x20 & 10-ft round

**Mineral Feeder**

**Portable Panels** | 1"x1.5" rectangular tubing | 13ga | 7-rail | 130-lb | 68" tall x 10'8" long | Chain latch

**Portable Panels** | 12ga & 14ga 1.66" OD tubing | 10-ft heavy & 12-ft standard | Latches to Winkel panels

**Portable Panel Trailer** \$2,780

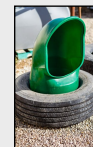
**Portable Buildings**

**Portable Loading Chute**

**Portable Windbreaks**

**Rubber Tire Water Tank** | 12-ft

**Stur-D Alleyway / Lead-up** | 24-ft, stationary, adjustable width w/ rolling door



## FENCING

### Post Drivers

**Montana Post Driver** | 10 FREE Brace Rails w/ purchase

**T-Rex Post Driver** | Fork Mount \$3,050, Center

Mount \$3,750, Side Mount \$4,650

**Redi Driver Classic**



**Bolt Together Fence Brace** | 9.5-ft

brace rail with hardware \$42 | Wire

gate latches for 2-7/8 posts

**Gates** | 12ga & 14ga OD Tubing

10-ft & 12-ft bow gates

Corral Gates: 6-bar | 8, 10, 12, 14, & 16-ft

**Posts**

2-7/8" x 6-ft, 2-7/8" x 8-ft, 2-7/8" x 10-ft | Pipe can be

cut to length

**Continuous Fence** | 6-rail 1.25" 14-ga 20-ft long | 6-rail

1.66" 14-ga 20-ft long

**SuperSteel / Steel Decking** | 36"x24' 22ga galvanized

SuperSteel | Great for windbreaks, corrals, etc.

**Used Guard Rail** | 2-rail + Galvanized | I-Beam posts 9-ft



## STEEL

**3/4" & 1" SCH 40 BLACK Pipe** | 21-ft lengths



**Round Tubing** | 1.25" 14ga | 1.66" 14ga

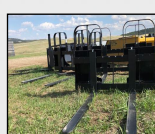
**Secondary Square Tubing** | Various sizes available

**Rectangular Tubing** | 0.75x1.25.11ga | 20-ft lengths

**5" GALVANIZED OCTAGON TUBING** | 39-ft lengths

**Semi load quantities of used 2-3/8 and 2-7/8 pipe available!**

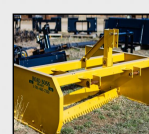
## ATTACHMENTS



Pallet Forks



Bale Spears



Box Scraper

## MISCELLANEOUS

**AC Delco Batteries** | Stocking 1/2 Ton pickup thru heavy equipment batteries

**BOLTS** | Grade 5 & Grade 8 | Metric bolt assortment

**Cee & Zee Purlin** | Structural framework in buildings

**Diablo Metal & Wood Cutting Saw Blades**

**Fiberglass Sucker Rod** | 1.25" 37-ft

**Good Used Fuel Tanks** | 100-200-gal

**Gopher Bait & Mouse Poison + Bait Boxes**

**Knipex Tools**

**Skidsteer Light Material Buckets** | 3/16" plate

**Heavy-Duty Cable** | 1-3/8"

**Tow Ropes** | Various sizes up to 200,000-lb breaking strength

**Shipping Containers** | 20-ft New | 40-ft New & Used

**Skidsteer Plates** \$213

**Bale Spears** \$110

**2"X27' Ratchet Strap** \$16

**5/16" Grade 70 Transport Chain 20'** \$47

**3/8" Grade 70 Transport Chain 20'** \$63

**Lever Chain Binders 5/16-3/8"** \$32

**Ratchet Chain Binders 5/16-3/8"** \$44

**ESAB Wire Flux Core .045 CS 15 33#** \$248

**Steel Work Bench 6-ft** \$395



Hornet 2600 Livestock Prods