

# ZEE PURLIN

ZEE PURLIN is used as structural framework in buildings due to its lightweight and economical properties.

# HEDMAN INC

406.390.1110

**Semi load quantities of used 2-3/8, 2-7/8 & 3.5" pipe available.**

**Call for delivered prices!**

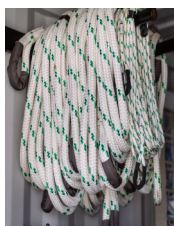
## MISCELLANEOUS

### Rubber Tire Water Tanks



### Tow Ropes

Various sizes up to 200,000-lb breaking strength



### Heavy-Duty Cable

1-3/8"

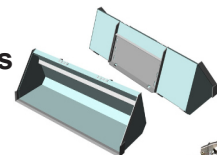


### New HDPE Pipe: 20" OD / 16" ID | 2" thick | 50-ft length



### Skidsteer Light Material Buckets

(Constructed with 3/16-in plate)



2.5-gal Water Fire Extinguishers: \$120  
Extinguisher Mount: \$40

### Buckhorn Centerflow Seed Boxes

Steel Work Benches 6-ft



Skidsteer Plates: \$178  
Bale Spears: \$85

### Diablo Metal & Wood Cutting Saw Blades

2"x27' Ratchet Strap: \$14  
5/16" Grade 70 Transport Chain: 20' @ \$47  
3/8" Grade 70 Transport Chain: 20' @ \$63  
Lever Chain Binders 5/16-3/8": \$28.50  
Ratchet Chain Binders 5/16-3/8": \$35

### Gopher Bait & Mouse Poison + Bait Boxes



### Knipex Tools!

**BOLTS** \$3.75/lb Grade 5 & \$5.70/lb Grade 8 | Metric bolt assortment with 72-hole bin

ESAB Wire Flux Core .045 \$5.90/lb

### ACDelco BATTERIES

Stocking Heavy Equipment to 1/2-Ton Pickup Batteries

# HEDMAN INC

406.390.1110

## FENCING

**SuperSteel / Steel Decking** 36"x24' 22ga  
Prime galvanized Super Steel Use for windbreaks, corrals, etc.



**Bolt together fence brace** | Brace rail with hardware \$42 | Wire gate latches for 2-7/8 posts \$23.00

**POSTS**  
2-7/8" x 6-ft  
2-7/8" x 8-ft  
2-7/8" x 10-ft  
5-in galvanized octagon 9'9" posts *Pipe posts can be cut to length.*



**Continuous Fence**  
6-rail 1-1/4" 14ga.  
20-ft long  
6-rail 1.66" 14 ga  
20-ft long

### GATES

All gates are constructed with 12 & 14 ga 1.66" OD tubing  
10-ft bow gates \$360  
12-ft bow gates \$417  
Corral gates - 6-bar  
8-ft \$190  
10-ft \$200  
12-ft \$220  
14-ft 240  
16-ft \$260

**Used guardrail**  
2-rail & 3-rail  
Plus, guardrail galvanized I-Beam Posts 9-ft



Pipe Caps in various sizes

## CATTLE HANDLING & LIVESTOCK EQUIPMENT

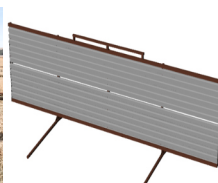
**Cattle Guards**  
Constructed with all new material. Cattle guard kits with used pipe available



**Feedbunks** 20-ft x 38-in x 12-in (constructed with 10ga & heavy tube legs) other sizes & bottomless available



### Portable Windbreaks



**Heavy-Duty Hay Feeders** Designed to waste less hay



Portable Panel Trailer: \$2,800

Head Catch: \$895



### Maternity Pen



### Free Standing Panels



### Rubber Tire Water Tanks



Mineral Feeders

Portable Loading Chute



**Portable Panels** All panels are constructed with 12 & 14ga 1.66" OD tubing 10-ft heavy portable panels, 12-ft standard portable panels (*Will latch to Winkel panels*)

## ATTACHMENTS



Pallet Forks



Bale spears



Box Scraper

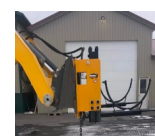
## POST DRIVERS

### Montana Post Driver



750R: \$6,800  
1000E: \$9,100  
1500E: \$11,500

### T-Rex Post Driver



Fork Mount: \$2,750  
Center Mount: \$3,400  
Side Mount: \$4,200

10 FREE Brace Rails with Purchase



Redi Driver Classic \$1,575

## CALL US FOR ALL YOUR STEEL NEEDS!

# HEDMAN INC

AG & STEEL SUPPLY

406.390.1110

## STEEL

Pipe, Tubing (Round & Square) & Angle Iron



5" Galvanized octagon tubing (39-ft lengths)

**Used 2-3/8, 2-7/8 & 3.5" pipe**  
Semi load quantities of used 2-3/8, 2-7/8 & 3.5" pipe available - Call for delivered prices!



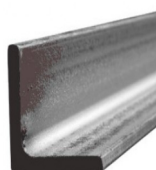
1.25" 14ga round tubing  
1.66" 14ga round tubing

Secondary Square Tubing Various sizes available



### Surplus

Angle Iron  
2x2x.120 &  
2x3x.250  
20-ft lengths



**A lot more steel...too much to list - Call us for details!**

## NEW INVENTORY

### DUNNAGE

3-in x 4-ft



### COMPOSITE SHEETING

5-ft x 8-ft x 3/4-in

