



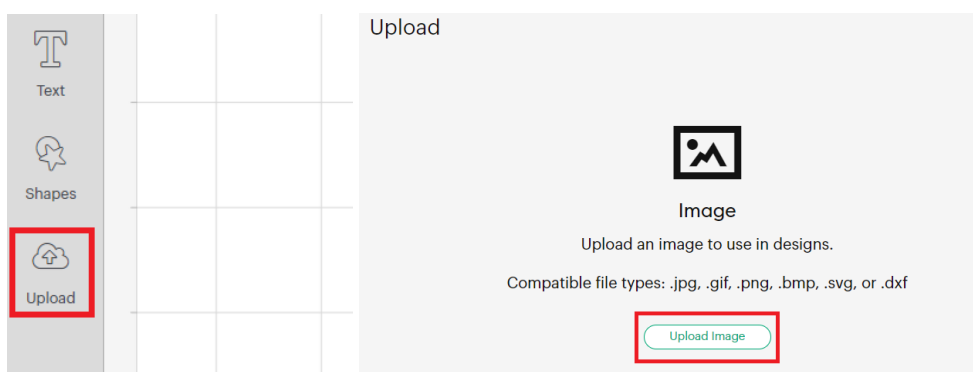
# Bauble Box Instructions

We hope you enjoy our free Christmas Bauble Box SVG files. These SVG files have been designed for 6cm & 8cm, round & flat baubles. To find the right box size, measure the width of your bauble on one side. We have provided both a windowed design with a clear circle on the lid to see the bauble inside the box or windowless.

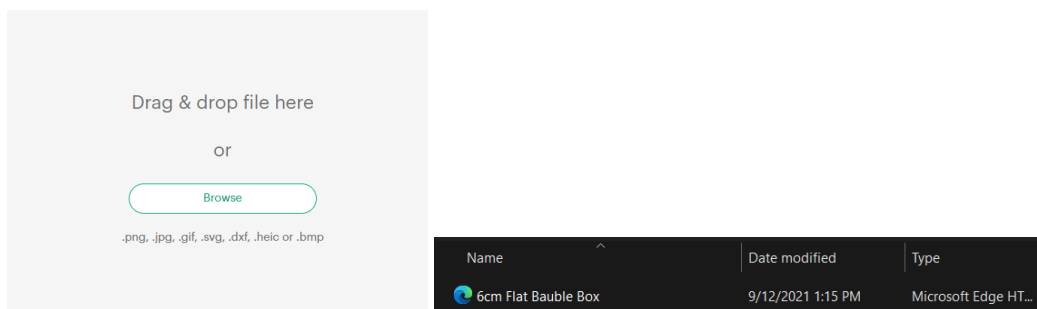
**Recommended Materials:** the box should be cut from cardstock that has a gsm above 200 or kraft board to maintain sturdiness. The window design contains a blue square which acts as a window at the top of the box and should be cut from acetate, a laminator sheet that has been run through a laminator or any clear film.

**Cricut Design Space Instructions:** before using this file, please follow the below instructions or watch the video available here: <https://youtu.be/guzv0VYTr9s>

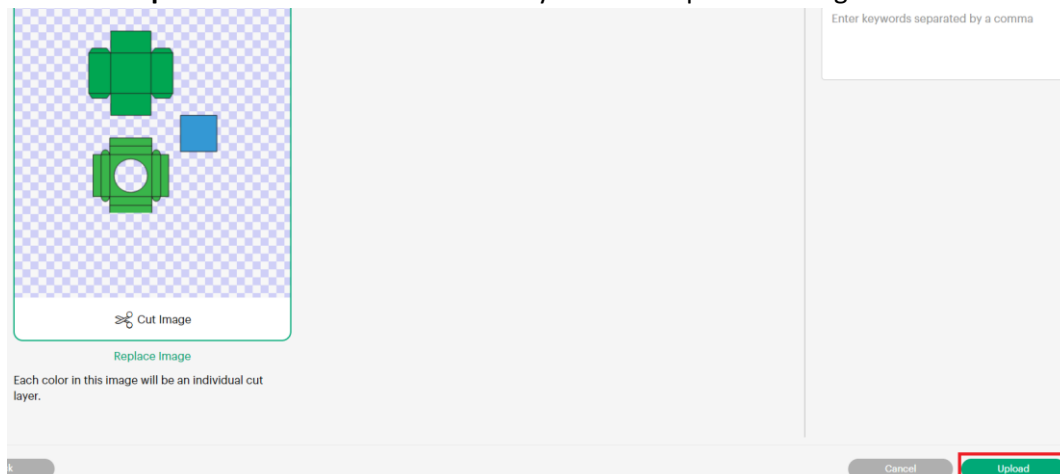
In Cricut Design Space, click **upload** and then select **upload image**



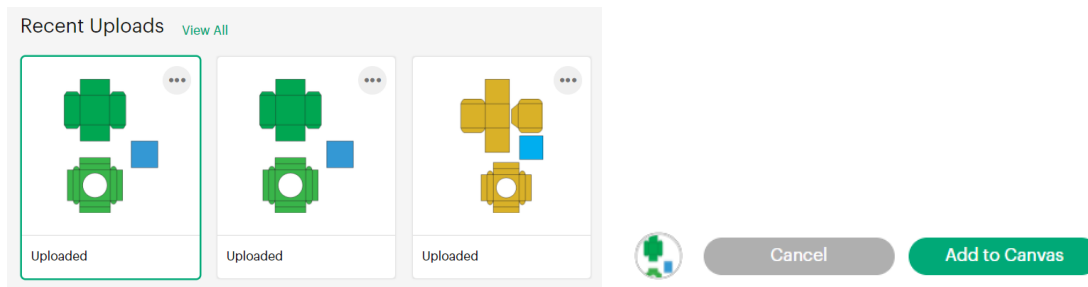
Locate your chosen bauble box SVG



Then click **Upload** which will add the SVG to your list of uploaded images

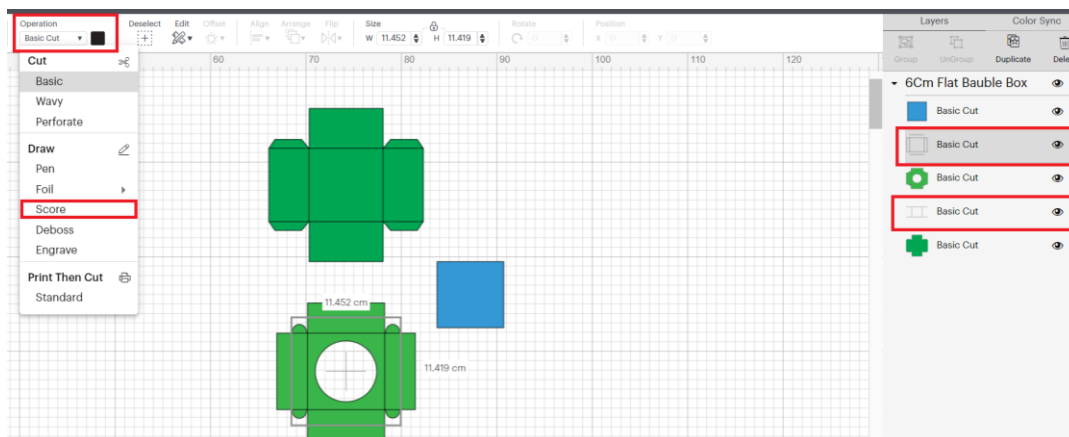


Select the bauble box image and click **add to canvas**

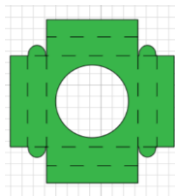


The score lines will import as cut lines so you will need to convert before clicking 'Make It'.

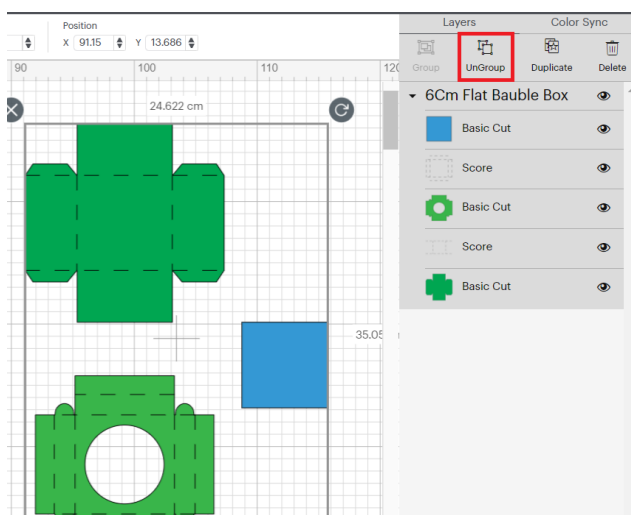
To do this, go over to the **layers panel** on the right-hand side of Design Space and click the colourless layers that only contain lines. Once selected, go to the top of Design Space, and click the **Operation** dropdown and change the operation to **Score**.



The lines will look broken once successfully changed converted to a score line. Be sure to convert the lines on both the base and lid of the bauble box.

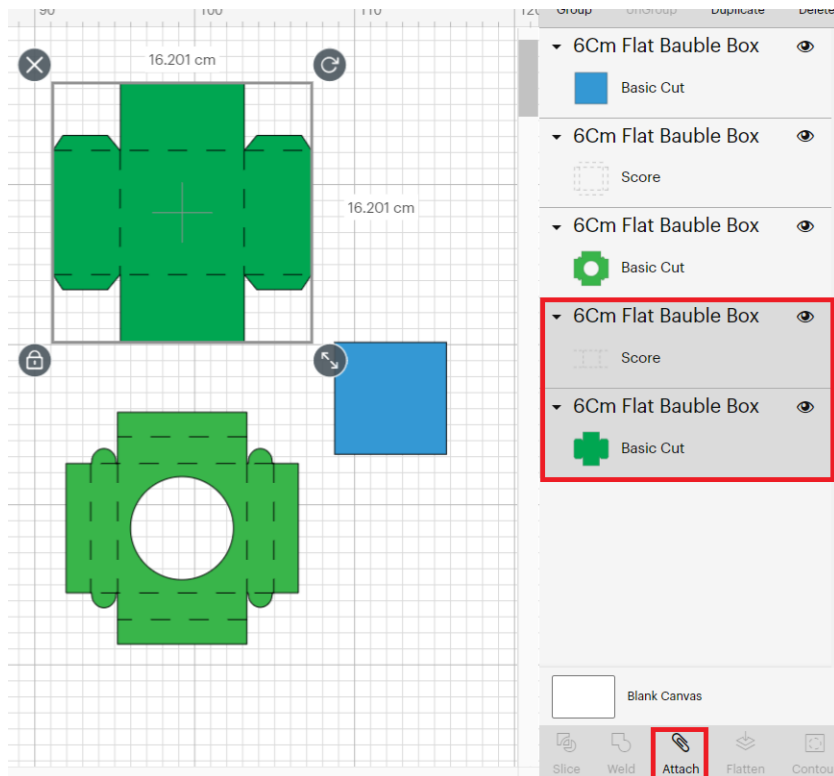


Next, to join the score line to the box shapes, click on the image on your canvas and then click **Ungroup** to separate the pieces

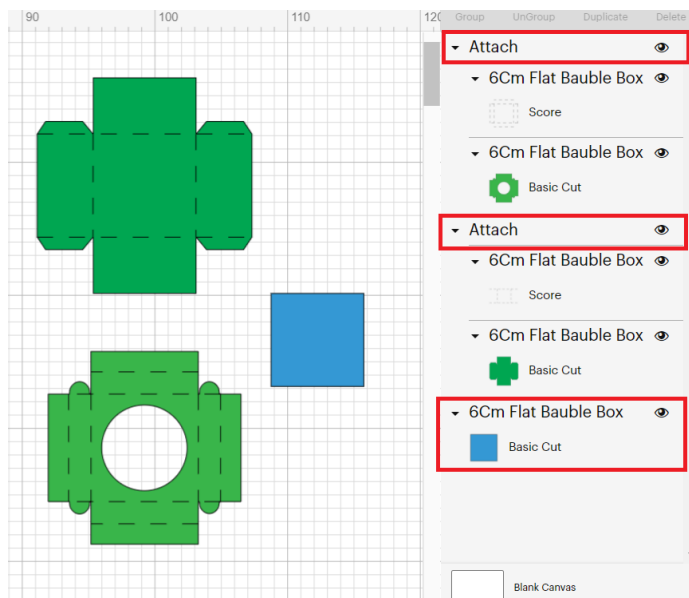


Then click or highlight the base piece and the score lines on that base piece and click **Attach**. Then repeat this step on the lid piece to attach the score line to the lid.

Do not attach the blue piece to either the lid or base, leave that separate.



If you've successfully completed all steps, your layers panel should look like the below image.



Then you can proceed with making your bauble box.

Should you require any additional support, please contact us at [itsybitsybuild@gmail.com](mailto:itsybitsybuild@gmail.com)

This file is for personal use only. The file must not be modified, shared or resold. Any products created from this file must not be sold without express written consent from Itsy Bitsy Build.

© Itsy Bitsy Build 2021