



AB
**American
Brands & Co.**



2023 Resort Collection

Table of Contents

03-04 New for 2023

05-08 Adult Fleece

09-10 Adult T-Shirts

11 Adult Pants

12-15 Mens T-Shirts

16 Mens Polos

17 Mens Longsleeves

18-22 Ladies T-Shirts

22 Ladies Longsleeves

22 Ladies Fleece

23 Youth T-Shirts

24-25 Youth Fleece

25 Youth Pants

26 Toddlers

27-29 Headwear

30 Tote Bags

American Brands & Company
1311 E. Chestnut Ave. Ste. E
Santa Ana, CA 92701
(714) 486-1101
AmericanBrandsCo.com
myteam@AmericanBrandsCo.com

Women's Special Blend Hooded Sweatshirt Dress

Style: VHSW004

8 oz. 52% ringspun cotton/ 48% polyester fleece. Made with quality construction, a crossover neck, thumbholes at cuffs, 2 drawcord colors, and 1x1 ribbing at cuffs and waistband with a slim fit.

Sizes: XS-2XL

Body Width: XS=18", S=19", M=20", L=21", XL=22", 2XL=23"



ART#SP-5317-1-1 shown on Carbon

Ladies Racerback Tank Top

Style: LTT1533

3.9 oz. 60% combed ringspun cotton/ 40% polyester jersey. Classic fit, side seamed with curved hem and matching colored self-binding seams.

Sizes: XS-2XL

Body Width: XS=14", S=15", M=16", L=17", XL=18", 2XL=19"



ART#SP-3039-4-1 shown on Hot Pink



Ladies Muscle Tank

Style: LTT6003

4.2 oz. 100% combed ringspun cotton jersey. Some colors are 52% cotton/ 48% polyester. Relaxed fit with low cut armhole. Curved bottom hem and side seams.

Sizes: S-2XL

Chest Width: S=15 1/4", M=16", L=17", XL=18", 2XL=19"



ART#SP-661-4-1 shown on Lavender Blue



Mens Animal Tee

Style: AT6901

4.5 oz. 100% combed ringspun cotton fine jersey. Black leopard is 60% cotton/ 40% polyester. Shoulder-to-shoulder self-fabric back neck tape. Side seamed.

Sizes: S-3XL

Chest Width: S=18", M=20", L=22", XL=24", 2XL=26", 3XL=28"



ART#SP-326-1-1 shown on Black Reptile



Black Leopard



Black Reptile



Brown Leopard



ART#SP-279-1-1 shown on Brown Reptile



ART#SP-725-4-1 shown on Royal

Adult Premium Pullover Hoodie Style: HSW14001

8.25 oz. 80% ringspun cotton/20% polyester 3-end fleece. Amazing lofty hand-feel and under 5% shrinkage. 3 panel hood with fleece lining for extra comfort. Matching round draw cord with tipped ends and metal eyelets.

Sizes: XS-3XL

Body Width:

XS=18", S=20", M=22", L=24", XL=26", 2XL=28", 3XL=30"



Adult Premium Full-Zip Hoodie Style: HSWFZ14003

8.25 oz. 80% ringspun cotton/20% polyester 3-end fleece. Amazing lofty hand-feel and under 5% shrinkage. 3 panel hood with fleece lining for extra comfort. Matching round draw cord with tipped ends and metal eyelets. YKK #5 zipper.

Sizes: XS-3XL

Body Width:

XS=18", S=20", M=22", L=24", XL=26", 2XL=28", 3XL=30"



ART#SP-1871-1-2 shown on Navy



Adult French Terry Hoodie Style: FTH13001

7.4 oz. 80% ringspun cotton / 20% polyester light-weight French Terry knit. 3-panel hood with self-lining for extra comfort. DTM draw cord with metal grommets. Heather colors differ in content.

Sizes: XS-3XL

Body Width:
XS=16", S=18", M=20", L=22", XL=24", 2XL=26", 3XL=28"



ART#SP-3025-3-1 shown on Heather Royal

Adult French Terry Raglan Crew Style: FRTC13004

7.4 oz. 80% ringspun cotton / 20% polyester light-weight French Terry knit. Double needle top stitch on all seams. Heather colors differ in content.

Sizes: XS-3XL

Body Width:
XS=16", S=18", M=20", L=22", XL=24", 2XL=26", 3XL=28"



ART#SP-2080-2-1 shown on Mauve

Adult Vintage Raglan Hoodie Style: VHSW004

8.25 oz. 100% ringspun cotton fleece. Double-needle stitched on all seams. Dyed to match drawcord. Ribbed sleeves and cuffs. Twill neck tape. Special dye and mineral wash processes create unique and natural variances in texture, distress, and shade.

Sizes: XS-3XL

Body Width:
XS=18", S=20", M=22", L=24", XL=26", 2XL=28", 3XL=30"



ART#SP-981-1-1 shown on Vintage Mustard

Adult Crew Neck Sweatshirt Style: SWS562

8 oz. 50% cotton/50% polyester pre-shrunk fleece. Seamless body with set-in sleeves. Double-needle stitched collar, armholes, and waistband.

Sizes: S-3XL

Body Width: S=20", M=22", L=24", XL=26", 2XL=28", 3XL=30"



ART#SP-1491-4-1 shown on Vintage Heather Blue

Adult 1/4 Zip Cadet Collar Sweatshirt Style: QSW995

8 oz. 50% cotton/50% polyester pre-shrunk fleece. Stylish cadet collar with concealed 7" aluminum zipper. Seamless body with set-in sleeves.

Sizes: S-3XL

Body Width: S=20", M=22", L=24", XL=26", 2XL=28", 3XL=30"



ART#SP-646-1-1 shown on Forest Green



Adult Pullover Hoodie

Style: HSW78

7.8 oz. 50% cotton/ 50% polyester pre-shrunk fleece. Air jet yarn for a soft, pill-resistant finish.

Sizes: S-3XL

Body Width: S=20", M=22", L=24", XL=26", 2XL=28", 3XL=30"



ART#SP-854-3-1 shown on Natural

Aquatic Blue	Ash	Athletic Heather	Black	Candy Pink
Cardinal	Carolina Blue	Charcoal	Clover Green	Coyote Brown
Dark Chocolate Brown	Dark Green	Dark Heather Grey	Gold	Graphite Heather
Heather Athletic Maroon	Heather Dark Chocolate Brown	Heather Navy	Heather Purple	Heather Red
Heather Royal	Heather Sangria	Kelly	Light Blue	Lime
Maroon	Medium Grey	Natural	Navy	Neon Blue
Neon Green	Neon Orange	Neon Pink	Neon Yellow	Olive
Olive Drab Green	Orange	Purple	Red	Royal
Sand	Sangria	Sapphire	Silver	Steel Blue
Teal	Team Purple	True Royal	White	Woodland Brown
Yellow				



ART#SP-854-3-1 shown on Heather Navy

Adult Deluxe S/S Tee
Style: AT15000

4.3 oz. 100% combed ringspun cotton ultra-soft 30 singles high end jersey knit. Side-seamed, under 5% shrinkage. Shoulder to shoulder tape.

Sizes: XS-3XL

Body Width:
XS=16", S=18", M=20", L=22", XL=24", 2XL=26", 3XL=28"



ART#SP-7130-4-1 shown on Mushroom



ART#SP-1569-4-1 shown on Cloud Purple

Adult Vintage Mineral Washed Tee
Style: AMWT002

4.3 oz. 100% combed ringspun cotton ultra-soft 30 singles high end jersey knit. Side seamed construction, pre-shrunk. Special dye and mineral wash processes create unique and natural variances in texture, distress, and shade.

Sizes: XS-3XL

Body Width:
XS=17", S=18", M=20", L=22", XL=24", 2XL=26", 3XL=28"



Made in USA S/S Tee
Style: AT5040

5.4 oz. 100% pre-shrunk cotton tubular jersey. Double-needle stitched sleeves and bottom hem. Shoulder-to-shoulder taping.

Sizes: S-3XL

Body Width:
S=18", M=20", L=22", XL=24", 2XL=26", 3XL=28"



ART#SP-395-4-1 shown on Hunter Green

Adult Colorblast Heavyweight Tee
Style: AT1745

6.1 oz. 100% ringspun cotton pre-shrunk jersey. Relaxed fit. Twill taped neck and shoulders for extra durability. Double-needle armhole, sleeve and bottom hems.

Sizes: S-3XL

Body Width:
S=17.5", M=19.5", L=21 1/4", XL=23", 2XL=25", 3XL=27"



ART#SP-1252-1-1 shown on Citrine





ART#SP-440-1-1 shown on Lavender

Adult Fashion Joggers Style: SWP2001

9 oz. 80% cotton/ 20% polyester fleece. Tapered fit with ribbed elastic flat waistband, cuffed ribbed ankles, two front pockets, one back pocket.

Sizes: S-3XL

Waist: S=30", M=32", L=34", XL=36", 2XL=38", 3XL=40"

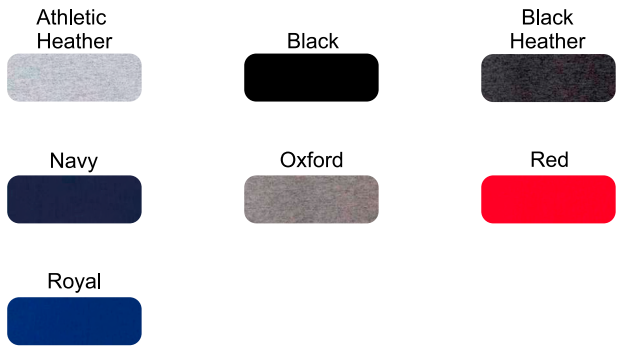


Adult Open Bottom Pocketed Sweatpants Style: SWP974

8 oz. 50% cotton/ 50% polyester pre-shrunk fleece. Side entry jersey-lined pockets. Double-needle stitched open-bottom hem.

Sizes: S-3XL

Waist: S=24", M=28", L=32", XL=36", 2XL=40", 3XL=44"



ART#SP-2338-1-1 shown on Black

Mens Premium Fitted Sueded Tee Style: AFT6410

4.3 oz. 60% combed ringspun cotton/ 40% polyester pre-shrunk sueded jersey. 1x1 sueded baby rib set-in collar.

Sizes: XS-2XL

Body Width: XS=17.5", S=19", M=20.5", L=22", XL=24", 2XL=26"



ART#SP-870-3-1 shown on Heather Maroon



Adult Tri-Blend Tee Style: ABT6750

4.7 oz. 50% polyester/ 25% combed ringspun cotton/ 25% rayon pre-shrunk jersey. Semi-fitted, side-seamed. Shoulder-to-shoulder taping.

Sizes: XS-3XL

Body Width: XS=16", S=18", M=20", L=22", XL=24", 2XL=26", 3XL=28"



ART#SP-5027-4-1 shown on Heather Galapagos Blue



Adult Pigment Dyed S/S Tee Style: PDT1717



ART#SP-3309-4-1 shown on Seafoam

6.1 oz. 100% ringspun cotton jersey. Soft washed garment dyed fabric. Shoulder-to-shoulder taping.

Sizes: S-3XL

Body Width:

S=17.5", M=19.5", L=21.25", XL=23", 2XL=25", 3XL=27"

Mustard	Navy	Neon Blue	Neon Pink	Neon Red Orange	Pepper	Periwinkle	Royal Carib
Sandstone	Seafoam	Vineyard	Violet	Watermelon	Wine	Yam	

Berry	Blue Jean	Blue Spruce	Boysenberry
Brick	Bright Salmon	Burnt Orange	Butter
Chalky Mint	Citrus	Crimson	Crunchberry
Denim	Emerald	Flo Blue	Grape
Grass	Grey	Hemp	Ice Blue
Khaki	Light Green	Melon	Moss

Adult Tank Top Style: TT5200

5.3 oz. 100% cotton jersey. Classic fit. Banded neck and armholes, double-needle bottom hem. Quarter-turned to eliminate center crease.

Sizes: S-3XL

Body Width: S=18", M=20", L=22", XL=24", 2XL=26", 3XL=28"



ART#SP-3456-4-1 shown on Royal

Black	Forest Green	Graphite Heather	Maroon
Navy	Neon Green	Purple	Red
Royal	Safety Pink	Sapphire	Sports Grey
White			

Mens Jersey Dryblend S/S Sportshirt Style: POLO8800

6 oz. 50% cotton / 50% polyester pre-shrunk jersey. Classic fit with moisture-wicking properties. Clean finished placket with 3 woodtone buttons. Contoured welt collar and cuffs.

Sizes: S-3XL

Body Width: S=19", M=21", L=23", XL=25", 2XL=27", 3XL=29"



ART#SP-923-1-1 shown on Navy



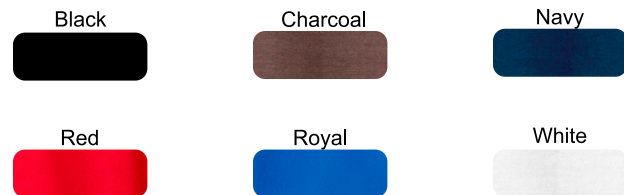
ART#EMB-045-6-4 shown on Charcoal

Mens Combed Ring Spun Pique Polo Style: POLO1500

5.9 oz. 100% combed ring spun cotton pique knit. Ribbed knit collar and cuffs. Stain-release finish. 3-button placket with dyed-to-match buttons.

Sizes: XS-3XL

Body Width:
XS=18.5", S=20", M=21.5", L=23", XL=24", 2XL=26.5", 3XL=28"



Adult Premium L/S Tee Style: LS15009

5.3 oz. 100% ringspun cotton pre-shrunk jersey. Side-seamed construction. Shoulder to shoulder tape.

Sizes: XS-3XL

Body Width:

XS=16", S=18", M=20", L=22", XL=24", 2XL=26", 3XL=28"



ART#SP-509-3-1 shown on Mustard



ART#SP-829-3-1 shown on Navy Heather

Mens Lightweight L/S Hooded Tee Style: LSH150

4.5 oz. 60% cotton / 40% polyester pre-shrunk jersey. Slim fit. Finished with sewn eyelets, flat drawcord, unlined hood and 1x1 ribbing at cuffs and waistband.

Sizes: XS-2XL

Body Width: XS=20", S=21", M=22", L=23", XL=24", 2XL=25"



Ladies Missy Fit S/S Tee

Style: LAT5000

5.3 oz. 100% cotton jersey. Side-seamed with cap sleeves and slightly tapered fit. Taped neck and shoulders.

Sizes: S-3XL

Chest Width:

S=17 1/4", M=19 1/4", L=21 1/4", XL=23 1/4", 2XL=25 1/4", 3XL=27 1/4"



ART#SP-1765-1-1 shown on Heather Navy

Ladies Classic Fit S/S Tee

Style: LAT2000

6 oz. 100% cotton jersey. Classic fit with feminine-inspired pattern. Taped neck & shoulders.

Sizes: XS-3XL

Chest Width:

XS=16", S=18", M=20", L=22", XL=24", 2XL=26", 3XL=28"



ART#SP-2210-4-1 shown on Light Blue





ART#SP-1014-4-1 shown on Black

Womens Tru-Fit Tee Style: LAT4001

4.3 oz. 100% combed ringspun cotton jersey. This side-seamed tee was fitted and approved by women, assuring a feminine yet comfortable style for women of all sizes.

Sizes: XS-3XL

Body Width:
XS=16", S=17", M=18", L=19", XL=20", 2XL=21", 3XL=22"

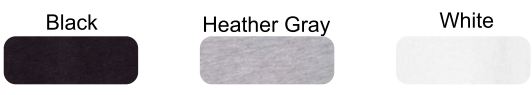


Womens Dolman Tee Style: WDT1560

4 oz. 60% combed ringspun cotton/40% polyester jersey. Side-seamed with dolman cut, gives it a flowy fit.

Sizes: XS-2XL

Body Width:
XS=17 1/2", S=18 1/2", M=19", L=20", XL=22", 2XL=23 1/2"



ART#SP-2189-1-1 shown on Black



ART#SP-4523-1-1 shown on Heather Red

Women's Tri-Blend Scoop Neck Tee Style: LABT6750

4.7 oz. 50% polyester/25% combed ringspun cotton/ 25% rayon jersey. Semi-fitted contoured silhouette with side seams. Shoulder-to-shoulder tape and seamed collar.

Sizes: XS-2XL

Body Width: XS=15", S=16", M=18", L=20", XL=22", 2XL=24"



Women's Tru-Fit V-Neck Tee Style: VNT4002

4.3 oz. 100% combed ringspun cotton jersey. Side seamed. Shoulder Taping.

Sizes: XS-3XL

Body Width: XS=16", S=17", M=18", L=19", XL=20", 2XL=21", 3XL=22"



ART#SP-720-1-1 shown on Navy

Women's Cropped Tee Style: CRPT4003

4.3 oz. 100% combed ringspun cotton jersey. Side seamed. Shoulder Taping. Relaxed Fit.

Sizes: XS-XL

Body Width: XS=16", S=18", M=20", L=22", XL=24"



ART#SP-615-3-1 shown on Powder Blue



Women's Slim Fit Tee

Style: WFT6004

4.2 oz. 100% combed ringspun cotton jersey. Longer length with side seams and fitted sleeves.

Sizes: S-2XL (Sizes run small)

Chest Width: S=16", M=16 3/4", L=17 3/4", XL=18 3/4", 2XL=19 3/4"

Asphalt 	Athletic Heather 	Baby Blue 	Berry 
Black 	Black Heather 	Dark Grey 	Dark Grey Heather 
Deep Heather 	Gold 	Heather Aqua 	Heather Deep Teal 
Heather Grass Green 	Heather Maroon 	Heather Navy 	Heather Red 
Heather True Royal 	Kelly 	Leaf 	Mauve 
Military Green 	Navy 	Pink 	Red 
Soft Cream 	Solid Black Blend (50/50 ctn/poly) 	Storm 	Team Purple 
True Royal 	White 	Yellow 	



ART#SP-2531-3-1 shown on Mauve



ART#SP-4310-2-1 shown on Heather Aqua

Ladies Slim Fit V-Neck Tee

Style: VNT214

4.5 oz. 100% ringspun cotton pre-shrunk jersey. Slim fashion fit for a slim, feminine silhouette. Side-seamed, ribbed v-neck, taped neck, double-needle sleeve and bottom hem.

Sizes: XS-2XL

Body Width:

XS=16", S=16 1/2", M=17 1/2", L=18 1/2", XL=19 1/2", 2XL=20 1/2"



Ladies L/S Cotton Tee

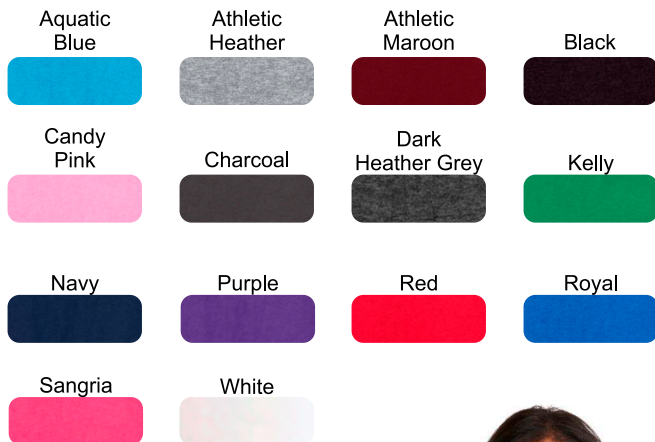
Style: WLS54

5.4 oz. 100% cotton jersey. Side seamed with a contoured body for a feminine fit. Back neck tape with rib knit collar. Open hem cuffs.

Sizes: XS-3XL

Chest Width:

XS=18 1/2", S=19 1/2", M=20 1/2", L=22", XL=23 1/2", 2XL=25", 3XL=27"



ART#SP-6202-2-1 shown on Aquatic Blue



ART#SP-2192-2-1 shown on White

Womens Pullover Crop Hoodie

Style: CRPH12

6.5 oz. 85% ringspun cotton / 15% polyester light-weight soft 3-End fleece. Raw edge at waist. 3 Panel hood with fleece lining for extra comfort. Flat draw cord.

Sizes: XS-L

Body Width: XS=20", S=22", M=24", L=26"



ART#SP-3097-2-1 shown on White

Youth S/S Tee Style: YT5000

5.3 oz. 100% cotton jersey. Shoulder-to-shoulder taping.
Seamless three-quarter inch collar. Classic retail fit.

Sizes: XS-XL

Body Width: XS=16", S=17", M=18", L=19", XL=20"



ART#SP-6730-2-1 shown on Mint Green



ART#SP-397-3-1 shown on Black

Youth Standard L/S Tee Style: YLS5400

5.3 oz. 100% cotton jersey. Shoulder-to-shoulder taping.
Seamless three-quarter inch collar. Classic retail fit.

Sizes: XS-XL

Body Width: XS=16", S=17", M=18", L=19", XL=20"





ART#SP-495-1-1 shown on Black

Youth Premium Pullover Hoodie Style: YHSW301

7.8 oz. 80% ringspun cotton / 20% polyester fleece. 3 panel hoodie. Kangaroo pocket.

Sizes: XS-XL

Body Width: XS=14", S=15.5", M=17", L=18.5", XL=20"



Youth Premium Full-Zip Hoodie Style: YHSWFZ302

7.8 oz. 80% ringspun cotton / 20% polyester fleece. 3 panel hoodie. Kangaroo pocket.

Sizes: XS-XL

Body Width: XS=14", S=15.5", M=17", L=18.5", XL=20"



ART#SP-758-2-1 shown on Hot Pink

Youth Crew Neck Sweatshirt Style: YSW18000

8 oz. 50% cotton/ 50% polyester fleece. Pill-resistant and softer air-jet spun yarn.

Sizes: XS-XL

Body Width: XS=16", S=17", M=18", L=19", XL=20"



ART#SP-377-2-1 shown on Sports Grey

Youth Joggers Style: YSWP350

7.8 oz. 80% combed ringspun cotton/ 20% polyester fleece. 2 front pockets, 1 back pocket. Tapered fit.

Sizes: XS-XL

Waist Relaxed: XS=10 1/2", S=11", M=12", L=13", XL=14"



ART#SP-675-1-1 shown on Navy



Toddler/Juvy Tee

Style: TJT3301

5.5 oz. 100% cotton jersey. Shoulder-to-shoulder self-fabric back neck tape. Side seam construction.

Toddler Sizes: 2,3,4 Juvy Sizes: 5/6,7

Chest Width: 2T=12", 3T=13", 4T=14", 5/6=15", 7=16"



ART#SP-1810-3-1 shown on Black

ART#SP-5277-5-1 shown on Ballerina

Adult Brush Twill Unstructured Cap Style: HAT9610

100% heavy brushed cotton twill. Six panel, low profile, unconstructed crown with top button and six sewn eyelets. Tri-glide brass buckle closure.

Sizes: OSFA



ART#EMB-052-9-3 shown on Khaki/Forest



Black



Khaki



Khaki/Black



Khaki/Forest



Navy



White

Adult Bucket Cap Style: HAT2050

100% bio-washed chino twill cotton. Unstructured, 3.5" crown with 2" brim.

Sizes: OSFA



ART#EMB-047-6-4 shown on Grey



Black



Charcoal



Grey



Khaki



Navy



NEW

Red



NEW

Royal



White



ART#EMB-059-8-3 shown on Navy

Premium Classic Dad's Cap Style: HAT6245C

100% cotton chino twill. Unstructured, low-profile, six-panel, 3 1/8' crown. Buckle closure with grommet.

Sizes: OSFA



Small Fit Classic Dad's Cap Style: HAT300Y

100% bio-washed cotton chino twill. Unstructured, six-panel, low-profile. Self-fabric tri-glide buckle closure.

Sizes: OSFA



ART#EMB-038A-6-2 shown on Khaki



Adult Snapback Retro Trucker Cap Style: HAT6606



65% polyester / 35% cotton chino twill. Structured, mid-profile, 3½" crown, six-panel. Snapback closure.

Sizes: OSFA

ART#EMB-053-4-2 shown on Pink



ART#EMB-060-7-2 shown on Heather Grey/Black



ART#EMB-051-5-2 shown on Steel Blue/Silver

Standard Canvas Tote Bag

Style: BAG8861

10 oz. 100% cotton canvas. Gusset bottom, allowing room to expand with 22" handles.

Size: 10.5" x 14" x 5"

Black



Natural



ART#SP-2596-1-1 shown on Natural

Navy



Red



Royal



ART#SP-1440-1-1 shown on Royal

Cotton Canvas Budget Tote Bag

Style: BAG8502

6 oz. 100% cotton canvas. Folds flat. 22" handles.

Size: 14.5" x 15.5"

Black



Natural



Navy



Red



Royal

