



AB
American
Brands & Co.
2024 Resort Collection



Table of Contents

03-05 New for 2024

06-09 Adult Fleece

10-11 Adult T-Shirts

12 Adult Pants

13-17 Mens T-Shirts

17 Mens Longsleeves

18 Mens Polos

19-24 Ladies T-Shirts

21 Ladies Fleece

23 Ladies Longsleeves

25 Youth T-Shirts

26-27 Youth Fleece

27 Youth Pants

28 Toddlers

29-30 Headwear

31 Tote Bags

American Brands & Company
1311 E. Chestnut Ave. Ste. E
Santa Ana, CA 92701
(714) 486-1101
AmericanBrandsCo.com
myteam@AmericanBrandsCo.com

Adult Sustainable Hoodie

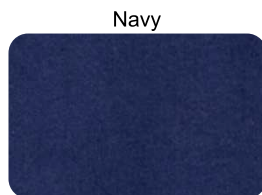
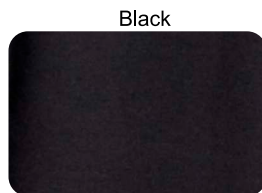
Style: HSW18002

8 oz. 55% regenerated cotton/ 45% regenerated polyester fleece. 2-panel hood with fleece lining. Dyed to match drawcords with tipped ends and metal eyelets. The yarn is composed of post-consumer waste.

Sizes: XS-3XL

Body Width:

XS=18", S=20", M=22", L=24", XL=26", 2XL=28", 3XL=30"



ART#SP-4723-4-1 shown on Black

Adult Premium CVC S/S Tee

Style: AT403

4.3 oz. 60% cotton/ 40% polyester jersey knit. Side-seamed retail fit. An enzyme wash gives it an ultra-soft feel.

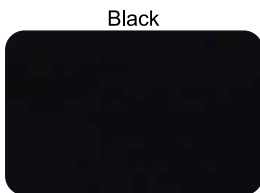
Sizes: XS-3XL

Body Width:

XS=16", S=18", M=20", L=22", XL=24", 2XL=26", 3XL=28"



ART#SP-3805-1-1 shown on Lagoon Heather





ART#SP-5223-1-1 shown on Celadon

Adult Fleece Shorts

Style: **SHORT3001**

9 oz. 80% cotton/ 20% polyester fleece. 2 front pockets and 1 back pocket. Ribbed elastic flat waistband.

Sizes: **S-3XL**

Waist: S=30", M=32", L=34", XL=36", 2XL=38", 3XL=40"



Lavender



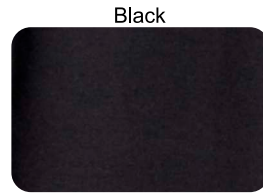
Military Green



Red



Royal



Black



Burgundy



Celadon



Charcoal Heather



Dust



Heather Grey



Navy



Pale Pink



Powder Blue



White

Womens CA Wave Wash Fleece Shorts

Style: **SHORT20**

7 oz. 55% ring-spun cotton/ 45% polyester 3-end fleece. Wave wash for softness and unique color. 2 jersey lined hand pockets. Elastic waistband with shoestring drawcord.

Sizes: **XS-2XL**

Waist:

XS=24-25", S=26-27", M=28-29", L=30-31", XL=32-33", 2XL=34-35"



ART#SP-889A-1-1 shown on Sage



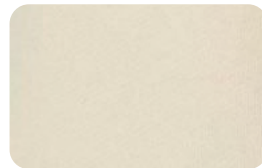
Black



Black Camo Heather



Blush



Bone



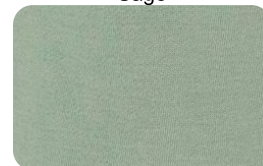
Dusty Rose



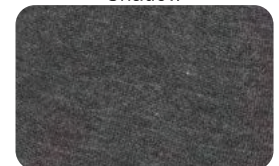
Forest Camo Heather



Misty Blue



Sage



Shadow

Adult Classic Dad's Hat

Style: HAT300

100% cotton bio-washed chino twill. Six Panel, unstructured, low profile. Antique brass tri-glide buckle closure.

Sizes: OSFA



ART#EMB-1871-7-4 shown on Khaki



Adult Fashion Visor

Style: HAT45

100% cotton twill, 80% poly/20% cotton (Neons). 3-panel visor with a self-fabric sweatband and velcro closure.

Sizes: OSFA



ART#EMB-3022-3-2 shown on Black



Adult Premium Pullover Hoodie

Style: HSW14001

8.25 oz. 80% ringspun cotton/20% polyester 3-end fleece. Amazing lofty hand-feel and under 5% shrinkage. 3 panel hood with fleece lining for extra comfort. Matching round draw cord with tipped ends and metal eyelets.

Sizes: XS-3XL

Body Width:

XS=18", S=20", M=22", L=24", XL=26", 2XL=28", 3XL=30"



ART#SP-1571-2-1 shown on Pina Coloda



Adult Premium Full-Zip Hoodie

Style: HSWFZ14003

8.25 oz. 80% ringspun cotton/20% polyester 3-end fleece. Amazing lofty hand-feel and under 5% shrinkage. 3 panel hood with fleece lining for extra comfort. Matching round draw cord with tipped ends and metal eyelets. YKK #5 zipper.

Sizes: XS-2XL

Body Width:

XS=18", S=20", M=22", L=24", XL=26", 2XL=28", 3XL=30"



ART#SP-3111-1-1-2 shown on Navy



Adult French Terry Hoodie

Style: FTH13001

7.4 oz. 80% ringspun cotton / 20% polyester light-weight French Terry knit. 3-panel hood with self-lining for extra comfort. DTM draw cord with metal grommets. Heather colors differ in content.

Sizes: XS-3XL

Body Width:

XS=16", S=18", M=20", L=22", XL=24", 2XL=26", 3XL=28"



ART#SP-3155-1-1 shown on Navy



Adult French Terry Raglan Crew

Style: FTRC13004

7.4 oz. 80% ringspun cotton / 20% polyester light-weight French Terry knit. Double needle top stitch on all seams. Heather colors differ in content.

Sizes: XS-3XL

Body Width:

XS=16", S=18", M=20", L=22", XL=24", 2XL=26", 3XL=28"



ART#SP-2475-2-2 shown on Graphite Heather

Adult Vintage Raglan Hoodie

Style: VHSW004

8.25 oz. 100% ringspun cotton fleece. Double-needle stitched on all seams. Dyed to match drawcord. Ribbed sleeves and cuffs. Twill neck tape. Special dye and mineral wash processes create unique and natural variances in texture, distress, and shade.

Sizes: XS-3XL

Body Width:

XS=18", S=20", M=22", L=24", XL=26", 2XL=28", 3XL=30"



ART#SP-2307-4-1 shown on Vintage Mustard

Adult Crew Neck Sweatshirt

Style: SWS562

8 oz. 50% cotton/50% polyester pre-shrunk fleece. Seamless body with set-in sleeves. Double-needle stitched collar, armholes, and waistband.

Sizes: S-3XL

Body Width: S=20", M=22", L=24", XL=26", 2XL=28", 3XL=30"



ART#SP-1145-4-1 shown on Oatmeal Heather



Adult 1/4 Zip Cadet Collar Sweatshirt

Style: QSW995

8 oz. 50% cotton/50% polyester pre-shrunk fleece. Stylish cadet collar with concealed 7" aluminum zipper. Seamless body with set-in sleeves.

Sizes: S-3XL

Body Width: S=20", M=22", L=24", XL=26", 2XL=28", 3XL=30"



ART#EMB-6121-9-5 shown on Oxford

Adult Pullover Hoodie

Style: HSW78

7.8 oz. 50% cotton/ 50% polyester pre-shrunk fleece. Air jet yarn for a soft, pill-resistant finish.

Sizes: S-3XL

Body Width: S=20", M=22", L=24", XL=26", 2XL=28", 3XL=30"



ART#SP-6671-1-1 shown on Neptune Blue



ART#SP-3038-1-1 shown on Maroon

Aquatic Blue	Ash	Athletic Heather	Black	NEW Black Heather
Candy Pink	Cardinal	Carolina Blue	Charcoal	Clover Green
NEW Coal Grey	Coyote Brown	NEW Creme	Dark Chocolate Brown	Dark Green
Dark Heather Grey	Gold	Graphite Heather	Heather Athletic Maroon	Heather Dark Chocolate Brown
Heather Navy	Heather Purple	Heather Red	Heather Royal	Heather Sangria
Kelly	Light Blue	Lime	Maroon	Medium Grey
Natural	Navy	Neon Blue	Neon Green	Neon Orange
Neon Pink	Neon Yellow	NEW Neptune Blue	NEW Oatmeal Heather	Olive
Olive Drab Green	Orange	NEW Pale Blush	Purple	Red
Royal	NEW Safety Green	NEW Safety Orange	Sand	Sangria
Sapphire	Silver	Steel Blue	Teal	Team Purple
True Royal	White	Woodland Brown	Yellow	



ART#SP-2280-2-1 shown on Meerkat

Adult Deluxe S/S Tee

Style: AT15000

4.3 oz. 100% combed ringspun cotton ultra-soft 30 singles high end jersey knit. Side-seamed, under 5% shrinkage. Shoulder to shoulder tape.

Sizes: XS-3XL

Body Width:

XS=16", S=18", M=20", L=22", XL=24", 2XL=26", 3XL=28"



Adult Vintage Mineral Washed Tee

Style: AMWT002

4.3 oz. 100% combed ringspun cotton ultra-soft 30 singles high end jersey knit. Side seamed construction, pre-shrunk. Special dye and mineral wash processes create unique and natural variances in texture, distress, and shade.

Sizes: XS-3XL

Body Width:

XS=17", S=18", M=20", L=22", XL=24", 2XL=26", 3XL=28"



ART#SP-2184-1-1 shown on Cloud Black

Adult Made in USA S/S Tee

Style: AT5040

5.4 oz. 100% pre-shrunk cotton tubular jersey. Double-needle stitched sleeves and bottom hem. Shoulder-to-shoulder taping.

Sizes: S-3XL

Body Width:

S=18", M=20", L=22", XL=24", 2XL=26", 3XL=28"



ART#SP-2412-1-1 shown on Hunter Green

Adult Colorblast Heavyweight Tee

Style: AT1745

6.1 oz. 100% ringspun cotton pre-shrunk jersey. Relaxed fit. Twill taped neck and shoulders for extra durability. Double-needle armhole, sleeve and bottom hems.

Sizes: S-3XL

Body Width:

S=17.5", M=19.5", L=21 1/4", XL=23", 2XL=25", 3XL=27"



ART#SP-860-1-1 shown on Citrine





ART#SP-2499-1-1 shown on Lavender

Adult Fashion Joggers

Style: SWP2001

9 oz. 80% cotton/ 20% polyester fleece. Tapered fit with ribbed elastic flat waistband, cuffed ribbed ankles, two front pockets, one back pocket.

Sizes: S-3XL

Waist: S=30", M=32", L=34", XL=36", 2XL=38", 3XL=40"



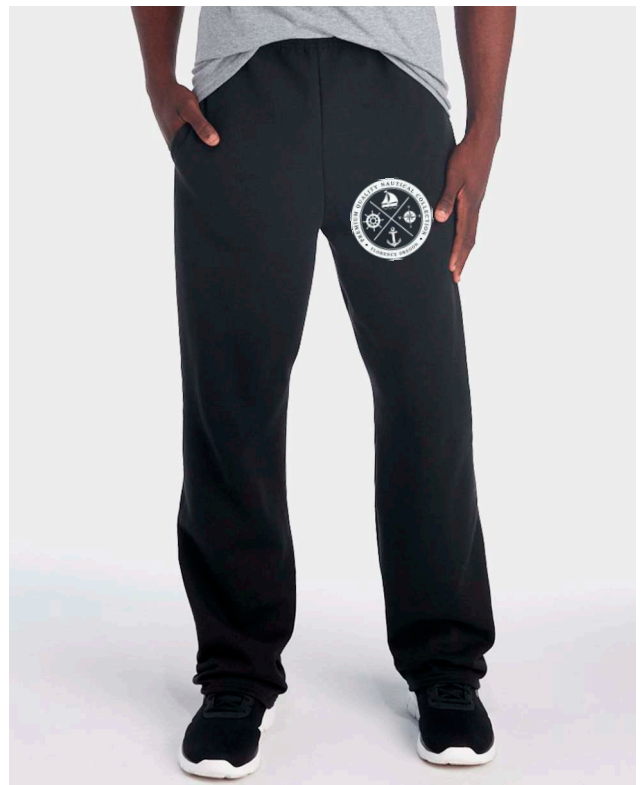
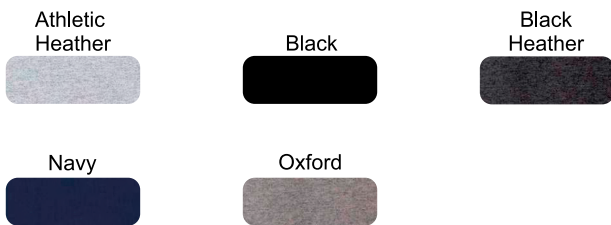
Adult Open Bottom Pocketed Sweatpants

Style: SWP974

8 oz. 50% cotton/ 50% polyester pre-shrunk fleece. Side entry jersey-lined pockets. Double-needle stitched open-bottom hem.

Sizes: S-3XL

Waist: S=24", M=28", L=32", XL=36", 2XL=40", 3XL=44"



ART#SP-732-1-1 shown on Black

Adult Standard S/S Tee

Style: AT5000

5.3 oz. 100% cotton jersey. Shoulder to shoulder taping.
Double-needle stitched neckline, bottom hem and sleeves.

Sizes: S-3XL

Body Width: S=18", M=20", L=22", XL=24", 2XL=26", 3XL=28"



ART#SP-4858-2-1 shown on Dark Heather

Antique Cherry Red	Antique Irish Green	Antique Jade Dome	Antique Orange	Antique Sapphire					
Ash	Azalea	Berry	Black	Blackberry					
Brown Savana	Cardinal Red	Carolina Blue	Charcoal	Cobalt					
Coral Silk	Cornsilk	Daisy	Dark Chocolate	Dark Heather					
Electric Green	Forest Green	Garnet	Gold	Graphite Heather					
Gravel	Heather Military Green	Heather Navy	Heather Radiant Orchid	Heather Red	Heather Sapphire	Heliconia	Ice Grey	Indigo	
Irish Green	Kiwi	Light Blue	Light Pink	Lilac	Lime	Maroon	Midnight	Military Green	
Mint Green	Natural	Navy	Neon Blue	Neon Green	Old Gold	Orange	Purple	Red	
Royal	Russet	Safety Green	Safety Orange	Safety Pink	Sand	Sapphire	Sky	Sports Grey	
Sunset	NEW Tangerine	Tennessee Orange	Texas Orange	Tropical Blue	Turf Green	Tweed	Violet	White	Yellow Haze

Adult Classic S/S Tee

Style: AT2000

6 oz. 100% cotton jersey. Shoulder-to-shoulder taping.
Double-needle stitched neckline, bottom hem and sleeves.

Sizes: S-3XL

Body Width: S=18", M=20", L=22", XL=24", 2XL=26", 3XL=28"



ART#SP-4620-1-1 shown on Indigo Blue



Mens Premium Fit Sueded Tee

Style: AT6410

4.3 oz. 60% combed ringspun cotton/ 40% polyester pre-shrunk sueded jersey. 1x1 sueded baby rib set-in collar.

Sizes: XS-2XL

Body Width: XS=17.5", S=19", M=20.5", L=22", XL=24", 2XL=26"



ART#SP-1014-5-1 shown on Heather Maroon

Mens Premium Fit Sueded Tee

Style: ABT330

4.5 oz. 50% Polyester/ 37% Cotton/ 13% Rayon jersey. Shoulder to shoulder taping

Sizes: S-3XL

Body Width:

S=19", M=20.5", L=22", XL=23.5", 2XL=25", 3XL=27"



ART#SP-1440-1-1 shown on Ochre Yellow Heather



Adult Pigment Dyed S/S Tee

Style: PDT1717

6.1 oz. 100% ringspun cotton jersey. Soft washed garment dyed fabric. Shoulder-to-shoulder taping.

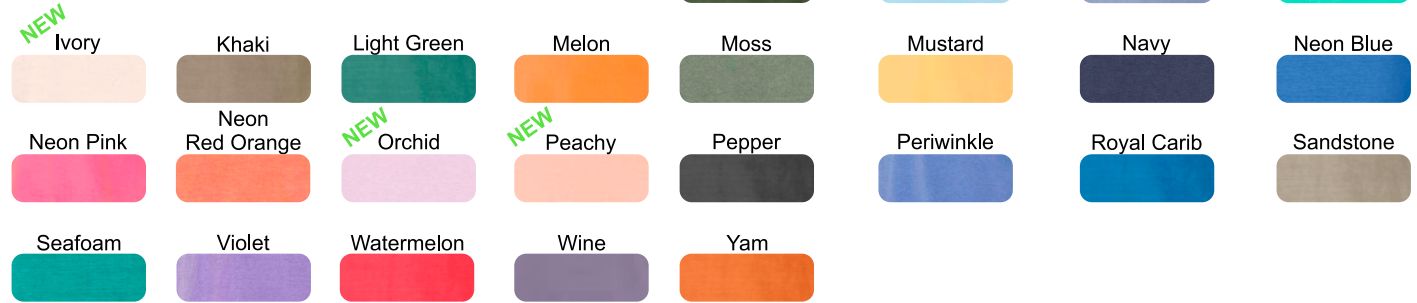
Sizes: S-3XL

Body Width:

S=17.5", M=19.5", L=21.25", XL=23", 2XL=25", 3XL=27"



ART#SP-5605-5-1 shown on Pepper



Mens Animal Tee

Style: AT6901

4.5 oz. 100% combed ringspun cotton fine jersey. Black leopard is 60% cotton/ 40% polyester. Shoulder-to-shoulder self-fabric back neck tape. Side seamed.

Sizes: S-3XL

Body Width:

S=18", M=20", L=22", XL=24", 2XL=26", 3XL=28"



ART#SP-428-2-1 shown on Black Reptile



Black Leopard

Black Reptile

Brown Leopard

Adult Cotton Tank Top

Style: TT54

5.4 oz. 100% cotton jersey. Heather and neon colors fabric content vary.

Sizes: S-3XL

Body Width: S=18, M=20, L=22", XL=24", 2XL=26", 3XL=28"



ART#SP-1483-2-2 shown on Charcoal



ART#SP-5082-5-3 shown on Army

Adult Premium L/S Tee

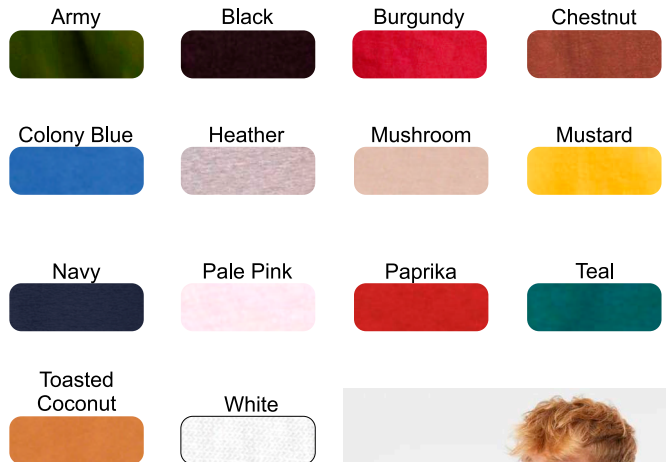
Style: LS15009

5.3 oz. 100% ringspun cotton pre-shrunk jersey. Side-seamed construction. Shoulder to shoulder tape.

Sizes: XS-3XL

Body Width:

XS=16", S=18", M=20", L=22", XL=24", 2XL=26", 3XL=28"



Mens Lightweight L/S Hooded Tee

Style: LSH150

4.5 oz. 60% cotton / 40% polyester pre-shrunk jersey. Slim fit. Finished with sewn eyelets, flat drawcord, unlined hood and 1x1 ribbing at cuffs and waistband.

Sizes: XS-2XL

Body Width: XS=20", S=21", M=22", L=23", XL=24", 2XL=25"



ART#SP-381-2-1 shown on Gunmetal Heather



Mens Jersey Dryblend Sportshirt
Style: POLO8800

6 oz. 50% cotton / 50% polyester pre-shrunk jersey. Classic fit with moisture-wicking properties. Clean finished placket with 3 woodtone buttons. Contoured welt collar and cuffs.

Sizes: S-3XL

Body Width: S=19", M=21", L=23", XL=25", 2XL=27", 3XL=29"



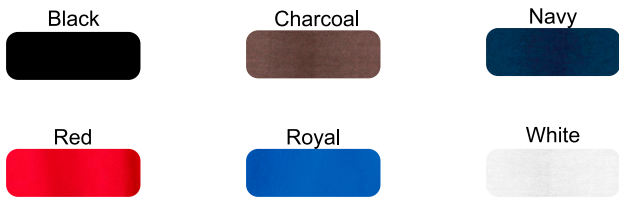
ART#EMB-337-10-1 shown on Black

Mens Combed Ring Spun Pique Polo
Style: POLO1500

5.9 oz. 100% combed ringspun cotton pique knit. Ribbed knit collar and cuffs. Stain-release finish. 3-button placket with dyed-to-match buttons.

Sizes: XS-3XL

Body Width:
XS=18.5", S=20", M=21.5", L=23", XL=24", 2XL=26.5", 3XL=28"



ART#EMB-061-5-3 shown on Charcoal

Ladies Core Cotton S/S Tee

Style: **LAT54**

5.4 oz. 100% cotton jersey. Heather and neon colors fabric content vary. Side seamed with a contoured body for a feminine fit.

Sizes: **XS-3XL**

Body Width:

XS=18.5", S=19.5", M=20.5", L=22", XL=23.5", 2XL=25", 3XL=27"



ART#SP-822-1-1 shown on Charcoal

Ladies Classic Fit S/S Tee

Style: **LAT61**

6.1 oz. 100% soft spun cotton jersey. Side-seamed and a shorter cut through the body and sleeves for a more feminine fit.

Sizes: **XS-3XL**

Body Width:

XS=16", S=18", M=20", L=22", XL=24", 2XL=26", 3XL=28"



ART#SP-2875-3-1 shown on Black





ART#SP-2941-6-2 shown on Black

Womens Premium Tru-Fit Tee

Style: LAT4001

4.3 oz. 100% combed ringspun cotton jersey. This side-seamed tee was fitted and approved for women, assuring a feminine yet comfortable style for women of all sizes.

Sizes: XS-3XL

Body Width:

XS=16", S=17", M=18", L=19", XL=20", 2XL=21", 3XL=22"



Womens Dolman Tee

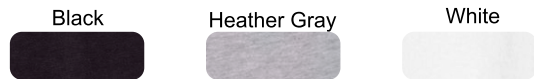
Style: WDT1560

4 oz. 60% combed ringspun cotton/40% polyester jersey. Side-seamed with dolman cut, gives it a flowy fit.

Sizes: XS-2XL

Body Width:

XS=17 1/2", S=18 1/2", M=19", L=20", XL=22", 2XL=23 1/2"



ART#SP-1904-1-1 shown on Heather Grey

Womens Tri-Blend Tee

Style: LABT130

4.5 oz. 50% polyester/ 25% combed ringspun cotton/ 25% rayon jersey. Side seamed with shoulder to shoulder taping.

Sizes: XS-3XL

Body Width: XS=17 1/4", S=18 1/4", M=19 1/4", L=20 3/4", XL=22 1/4", 2XL=24 1/4", 3XL=26 1/4"



ART#SP-1756-1-1 shown on Navy Frost

Womens Pullover Crop Hoodie

Style: CRPH12

6.5 oz. 85% ringspun cotton / 15% polyester light-weight soft 3-End fleece. Raw edge at waist. 3 Panel hood with fleece lining for extra comfort. Flat draw cord.

Sizes: XS-L

Body Width: XS=20", S=22", M=24", L=26"



ART#SP-2151-1-1 shown on Lilac

Womens Cropped Tee

Style: CRPT4003

4.3 oz. 100% combed ringspun cotton jersey. Side seamed. Shoulder Taping. Relaxed Fit.

Sizes: XS-XL

Body Width: XS=16", S=18", M=20", L=22", XL=24"



ART#SP-213-6-1 shown on Powder Blue

Womens Slim Fit Tee
 Style: WFT6004

4.2 oz. 100% combed ringspun cotton jersey. Longer length with side seams and fitted sleeves.

Sizes: S-2XL

Body Width: S=16", M=16 3/4", L=17 3/4", XL=18 3/4", 2XL=19 3/4"



ART#SP-504-2-1 shown on Pink

Asphalt	Athletic Heather	Baby Blue	Berry
Black	Black Heather	Dark Grey	Dark Grey Heather
Deep Heather	Gold	Heather Deep Teal	Heather Grass Green
Heather Navy	Heather Red	Heather True Royal	Leaf
Mauve	Military Green	Navy	Pink
Red	Soft Cream	Solid Black Blend (50/50 ctr/body)	Storm
Team Purple	True Royal	White	Yellow



ART#SP-1569-4-1 shown on Team Purple

Womens Tru-Fit V-Neck Tee

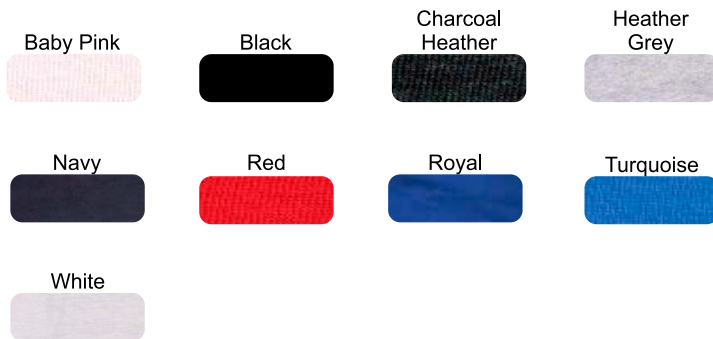
Style: VNT4002

4.3 oz. 100% combed ringspun cotton jersey. Side seamed. Shoulder Taping.

Sizes: XS-3XL

Body Width:

XS=16", S=17", M=18", L=19", XL=20", 2XL=21", 3XL=22"



ART#SP-4523-1-1 shown on Navy

Ladies Slim Fit V-Neck Tee

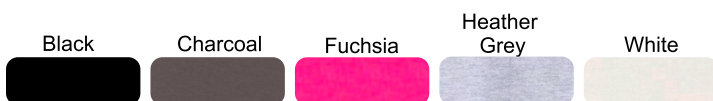
Style: VNT214

4.5 oz. 100% ringspun cotton pre-shrunk jersey. Slim fashion fit for a slim, feminine silhouette. Side-seamed, ribbed v-neck, taped neck, double-needle sleeve and bottom hem.

Sizes: XS-2XL

Body Width:

XS=16", S=16 1/2", M=17 1/2", L=18 1/2", XL=19 1/2", 2XL=20 1/2"



ART#SP-1410-1-1 shown on Black

Ladies L/S Cotton Tee

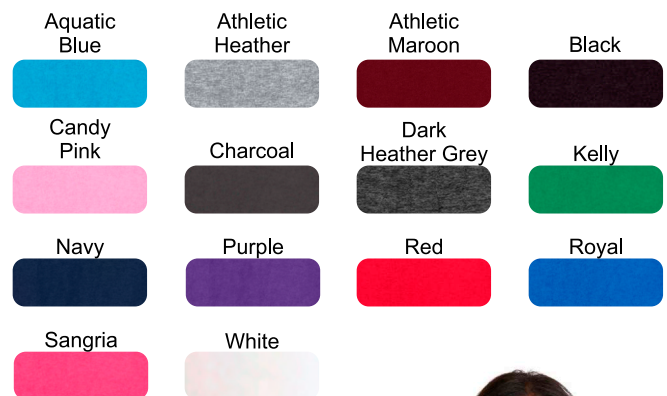
Style: WLS54

5.4 oz. 100% cotton jersey. Side seamed with a contoured body for a feminine fit. Back neck tape with rib knit collar. Open hem cuffs.

Sizes: XS-3XL

Body Width:

XS=18 1/2", S=19 1/2", M=20 1/2", L=22", XL=23 1/2", 2XL=25", 3XL=27"



ART#SP-855-1-1 shown on Athletic Heather



ART#SP-2601-4-3 shown on Lilac

Ladies Racerback Tank Top

Style: LTT1533

3.9 oz. 60% combed ringspun cotton/ 40% polyester jersey. Classic fit, side seamed with curved hem and matching colored self-binding seams.

Sizes: XS-2XL

Body Width: XS=14", S=15", M=16", L=17", XL=18", 2XL=19"



ART#SP-683-2-1 shown on Lavender Blue

Ladies Muscle Tank

Style: LTT6003

4.2 oz. 100% combed ringspun cotton jersey. Some colors are 52% cotton/ 48% polyester. Relaxed fit with low cut armhole. Curved bottom hem and side seams.

Sizes: S-2XL

Body Width: S=15 1/4", M=16", L=17", XL=18", 2XL=19"



Youth Premium S/S Tee

Style: YT3502

4.3 oz. 100% combed ringspun cotton jersey. Side seamed. Modern Slim Fit with shoulder to shoulder taping.

Sizes: XS-3XL

Body Width: XS=12", S=14", M=16", L=18", XL=19"



ART#SP-980-1-1 shown on Turquoise



ART#SP-955-3-1 shown on Royal

Youth Standard L/S Tee

Style: YLS5400

5.3 oz. 100% cotton jersey. Shoulder-to-shoulder taping. Seamless three-quarter inch collar. Classic retail fit.

Sizes: XS-XL

Body Width: XS=16", S=17", M=18", L=19", XL=20"





ART#SP-725Y-1-1 shown on Navy

Youth Premium Pullover Hoodie Style: YHSW301

7.8 oz. 80% ringspun cotton / 20% polyester fleece. 3 panel hoodie. Kangaroo pocket.

Sizes: XS-XL

Body Width: XS=14", S=15.5", M=17", L=18.5", XL=20"



Youth Premium Full-Zip Hoodie Style: YHSWFZ302

7.8 oz. 80% ringspun cotton / 20% polyester fleece. 3 panel hoodie. Kangaroo pocket.

Sizes: XS-XL

Body Width: XS=14", S=15.5", M=17", L=18.5", XL=20"



ART#SP-1310-1-1 shown on Black

Youth Crew Neck Sweatshirt

Style: YSWS90

7.8 oz. 50% cotton/ 50% polyester fleece. Air jet yarn for softness.

Sizes: XS-XL

Body Width: XS=14", S=16", M=17", L=18", XL=20"



ART#SP-262-6-1 shown on Carolina Blue

Youth Joggers

Style: YSWP350

7.8 oz. 80% combed ringspun cotton/ 20% polyester fleece. 2 front pockets, 1 back pocket. Tapered fit.

Sizes: XS-XL

Waist Relaxed: XS=10 1/2", S=11", M=12", L=13", XL=14"



ART#SP-951-1-1 shown on Black

Toddler/Juvy Tee
 Style: TJT3301

5.5 oz. 100% cotton jersey. Shoulder-to-shoulder self-fabric back neck tape. Side seam construction.

Toddler Sizes: 2,3,4 Juvy Sizes: 5/6,7

Body Width: 2T=12", 3T=13", 4T=14", 5/6=15", 7=16"



ART#SP-2309-3-1 shown on Ash



ART#SP-427-3-1 shown on Black

Premium Classic Dad's Cap

Style: HAT6245C

100% cotton chino twill. Unstructured, low-profile, six-panel, 3 1/8" crown. Buckle closure with grommet.

Sizes: OSFA



ART#EMB-2601-5-4 shown on Light Blue



Small Fit Classic Dad's Cap

Style: HAT300Y

100% bio-washed cotton chino twill. Unstructured, six-panel, low-profile. Self-fabric tri-glide buckle closure.

Sizes: OSFA



ART#EMB-062-6-4 shown on Navy



Adult Bucket Cap

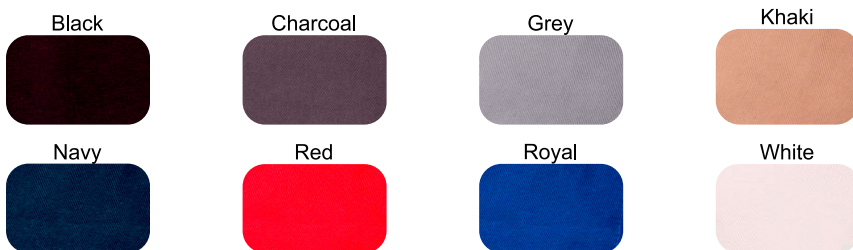
Style: HAT2050

100% bio-washed chino twill cotton. Unstructured, 3.5" crown with 2" brim.

Sizes: OSFA



ART#EMB-2351-5-2 shown on Navy



Adult Snapback Retro Trucker Cap

Style: HAT6606

65% polyester / 35% cotton chino twill. Structured, mid-profile, 3 1/2" crown, six-panel. Snapback closure.

Sizes: OSFA



ART#EMB-2940-4-3 shown on Pink



ART#EMB-440-4-2 shown on Heather/Black

Standard Canvas Tote Bag

Style: BAG8861

10 oz. 100% cotton canvas. Gusset bottom, allowing room to expand with 22" handles.

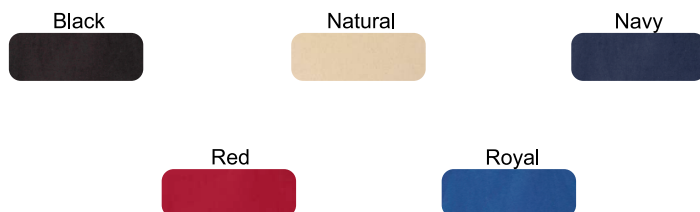
Size: 10.5" x 14" x 5"

Cotton Canvas Budget Tote Bag

Style: BAG8502

6 oz. 100% cotton canvas. Folds flat. 22" handles.

Size: 14.5" x 15.5"



ART#SP-675-1-1 shown on Royal



ART#SP-176-2-2 shown on Natural