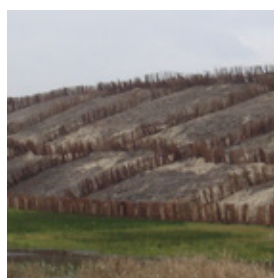




GREENFIX *f*₃

Flame Retardant Erosion Control Blankets



...developing tomorrows ideas®

Green Kiss Solution™

With the «GREEN KISS SOLUTION™» label, SOILTEC sets a standard for environment protection and stewardship. Each of the geotechnical solutions and products we develop is designed for high environmental benefit and «low environmental impact». «GREEN KISS SOLUTION™» represents our contribution to ecological sustainability.

We strive to improve in all stages of research and production to minimize the environmental impact of our solutions. For example, the machines for the production of **GREENFIX f3** products are solar-powered. The exclusive use of natural materials made from renewable resources and recycled products also contributes to protecting the natural resources of our planet and supporting maintenance of ecological balance.

GREEN KISS SOLUTION – for the environment in which we live.



GREENFIX *f₃* Descripton

Mat Type	Description	Dimensions	Qty. per Unit	Weight per Unit
Covamat	85% grass fibers - 15% coir fiber, Seed mix embedded in a mulch-layer, both sides PP or jute-meshed, 0.4 – 0.8” thick, 1.3 lbs./yd²	3.9 x 82 ft	35.5 yd²	46 lbs.
		7.8 x 82 ft	71.0 yd²	92 lbs.
Covamat fresh	85% grass fibers - 15% coir fiber, Seed mix embedded in a mulch-layer, both sides PP or jute-meshed, 0.7 – 0.9” thick, 2.0 lbs./yd²	3.9 x 66 ft	28.6 yd²	55 lbs.
		7.8 x 66 ft	55.2 yd²	110 lbs.
Eromat	85% grass fibers - 15% coir fiber, both sides PP or jute-meshed, 0.9 lbs./yd²	3.9 x 138 ft	42.9 yd²	39 lbs.
		7.8 x 138 ft	85.8 yd²	78 lbs.
Mulchmat	85% grass fibers - 15% coir fiber, top oxygrid + jute-stitching, off-set slit twin 100% bio-degradable PLA – Mulchfoil (DIN V54900-2) 1.1 lbs./yd²	3.9 x 99 ft	35.5 yd²	39 lbs.
		7.8 x 99 ft	71.0 yd²	78 lbs..
Rockmat	85% grass fibres - 15% coir fiber blanket, top galvanized wire mesh acc. to DIN1200, mesh-width 1.0 in, wire dia. 0.03” – approx. 1.5 lbs./yd²	3.9 x 82 ft	35.5 yd²	54 lbs.
Turf Reinforment Mat (TRM)	3D PP-Wave-Netting, 0.4-0.6” thick stitched together with 85% grass fibers - 15% coir fiber blanket, both sides heavy PP-Netting approx. 1.5 lbs./yd²	7,5 x 82 ft	68.3 yd²	102 lbs





Applications:

- Motorway slopes
- Oil & Gas industry
- Traffic roundabouts
- Railway slopes
- Dike & Coastal protection
- Military projects
- Leisure parcs

GREENFIX *f₃*

**The new fire free fiber blanket series
from SOILTEC Geosystems.**



SOILTEC's new GREENFIX f3 product range combines all the benefits of a natural bio-degradable erosion control blanket with an additional fire protection according to DIN 4102-1: 1998-05 – class B2 tested at the MPA Hannover, Germany. The natural blend of different biologically treated grass fibers with added coir fibers will help the vegetation to grow and prevent the surfaces from soil losses. In prolonged hot and dry periods some fibres quickly become dry and at risk of catching fire from a spark or cigarette. In areas where fire hazards need to be considered, such as railway embankments, the GREENFIX f3 range offers un-seeded and pre-seeded options to meet the environmental standards of your project.

GREENFIX f₃

Choice of Blankets

- **GREENFIX f3 Covamat** pre-seeded erosion control blanket, used for grass and/or wildflower establishment on a variety of slopes and embankments in a single operation.
- **GREENFIX f3 Covamat fresh** pre-seeded erosion control blanket with additional substrate soil, used on a variety of slopes and embankments with poor soil conditions and/or with larger inclinations for a fast vegetation establishment.
- **GREENFIX f3 Eromat** un-seeded and cost-effective erosion control blanket which can be under-seeded with site-specific seed mixes.
- **GREENFIX f3 Rockmat** un-seeded blanket with the addition of a steel mesh acc. to DIN 1200 for increased reinforcement and prevention of burrowing animals.
- **GREENFIX f3 Mulchmat** saving on irrigation water with weed controlled 100% bio-degradable mulch foils acc. to DIN V54900-2 for fast plant growths. Mulchmat provides nursery like conditions for newly planted trees and shrubs.
- **GREENFIX f3 Turf Reinforcement Mat (TRM)** is a three-dimensional multi-purpose soil reinforcement blanket for permanent erosion control with mulching characteristics through all phases of vegetation development, while the 3D polypropylene mesh gives structure and surface stability to the slope.



Dike & Coastal protection

GREENFIX f3 mats are highly resistant to sea salt and are ideal for coastal recultivation projects. The jute-meshed version of the GREENFIX f3 Eromats protect the marram grass roots from wind erosion and enable strong plant growth.

**Headquarter**

Neue Finien 7a, 28832 Achim
E: geozellen@soiltec.de
www.soiltec-geosystems.de

**USA Office**

1601 Ives Avenue, Unit J
Oxnard, CA 93033-6538
USA

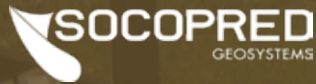
P: +1(805) 247-9007

E: customerservice@hitecent.com

Brazil Office

São Paulo | P: +55(19) 3805-2818
E: m.mantelato@hitecent.com

www.hitecent.com

**Tunisia Office**

Boumhel, Tunis | P: +216 79 215 301
E: contact@socopred.tn



Your specialist dealer: