

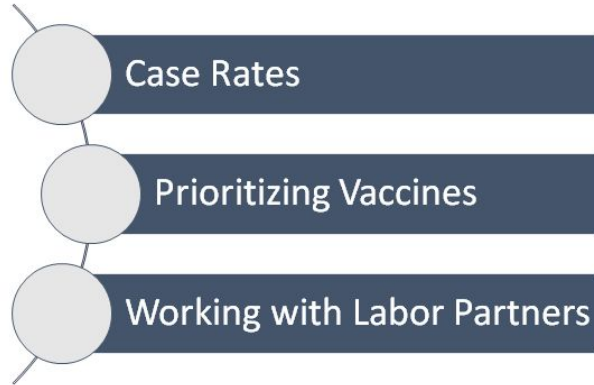
Steps to Implement Phase III

February 23, 2021

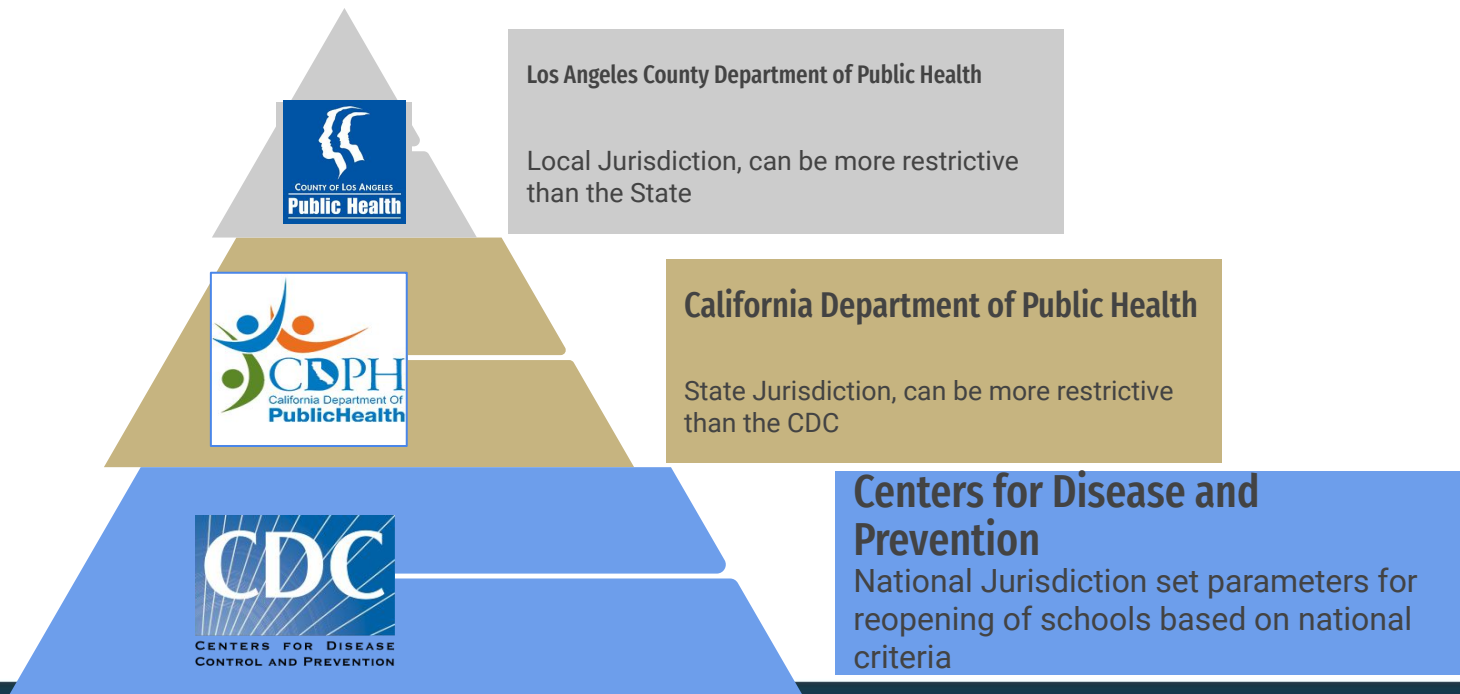


Superintendent Updates

State of California Safe Return to Schools Plan



Levels of Jurisdiction



The Current Numbers

- Tier Assignments per State Guidelines: Widespread Transmission (as of 2/16/21)
20.0 Adjusted case rate (Purple - Tier 1) 7.2 % Positivity Rate - 7 day average (Red -Tier 2)
- LA County (as reported 2/17/21)
2,394 new cases (1,171,664 total cases) 162 deaths (10, 368 deaths)
Daily Test Positivity Rate - 5.5% 119,372 children ages 5-17 tested positive for COVID
- San Gabriel City Rate: (as reported 2/17/21)
3,035 total cases 169 deaths
- San Gabriel Unified Rates
11 line lists submitted to LAC DPH since mid-November for positive cases of persons on school sites:
21
 staff tested positive*, 20 persons quarantined
Multiple students at all grade levels have been diagnosed with COVID (all sites in the district are represented).

*number of staff testing positive does not include staff working from home. All sites have had multiple staff test positive for COVID-19; some have become seriously ill. We've had one staff death from COVID.



Health and Safety Protocols in Place

All staff received training on COVID-19 and measures to limit risk of infection.

Employees and visitors are screened for COVID-19 prior to coming onto any SGUSD site. Employees and visitors are directed to wear masks at all times while on an SGUSD site.

On-going training for health services staff including:

- COVID-19 disease, recognition of symptoms, response to symptomatic student or staff on campus
- Information and resources that can be shared with staff and families
- New health office procedures that will reduce the risk of transmission of disease to healthy students

Information on school reopening protocols and procedures being developed for distribution to SGUSD families.

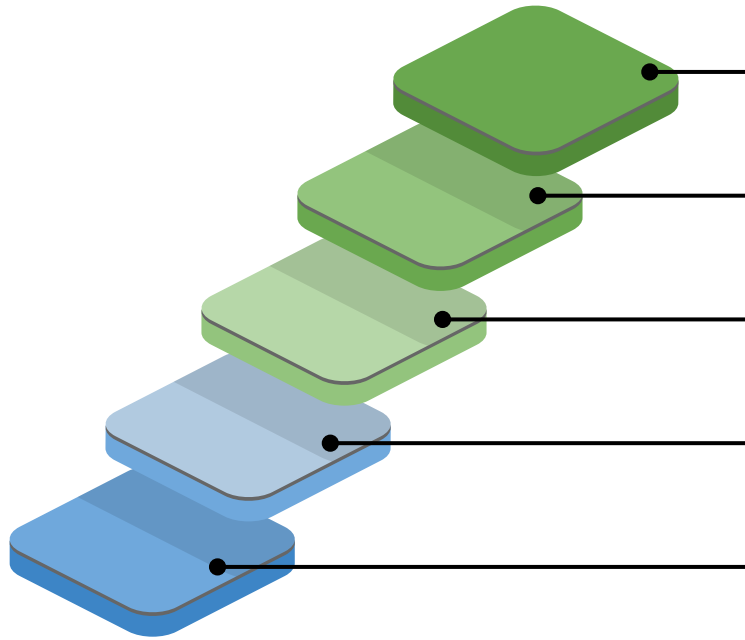
SGUSD is partnering with other districts and City of Hope to provide vaccines to eligible staff (over 65, health care).

Appropriate levels of PPE and cleaning products to be distributed to all sites.

All LAC DPH School Reopening Protocols are being implemented.



Consistent Implementation of Layered Mitigation Strategies



Contact tracing in combination with isolation and quarantine, in collaboration with the Health Department

Cleaning and maintaining healthy facilities

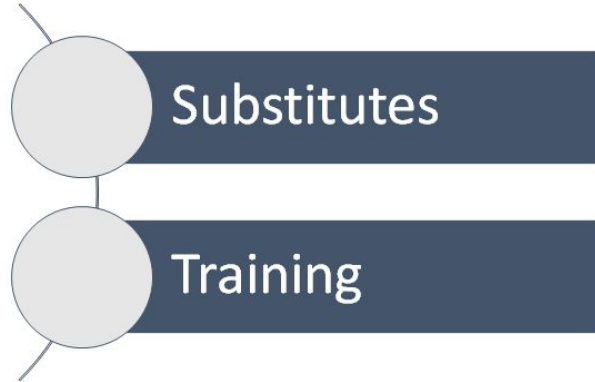
Handwashing and respiratory Etiquette

6 Feet Physical Distancing

Universal and correct use of masks

In the SGUSD COVID Safety Plan...

Human Resources Department Update

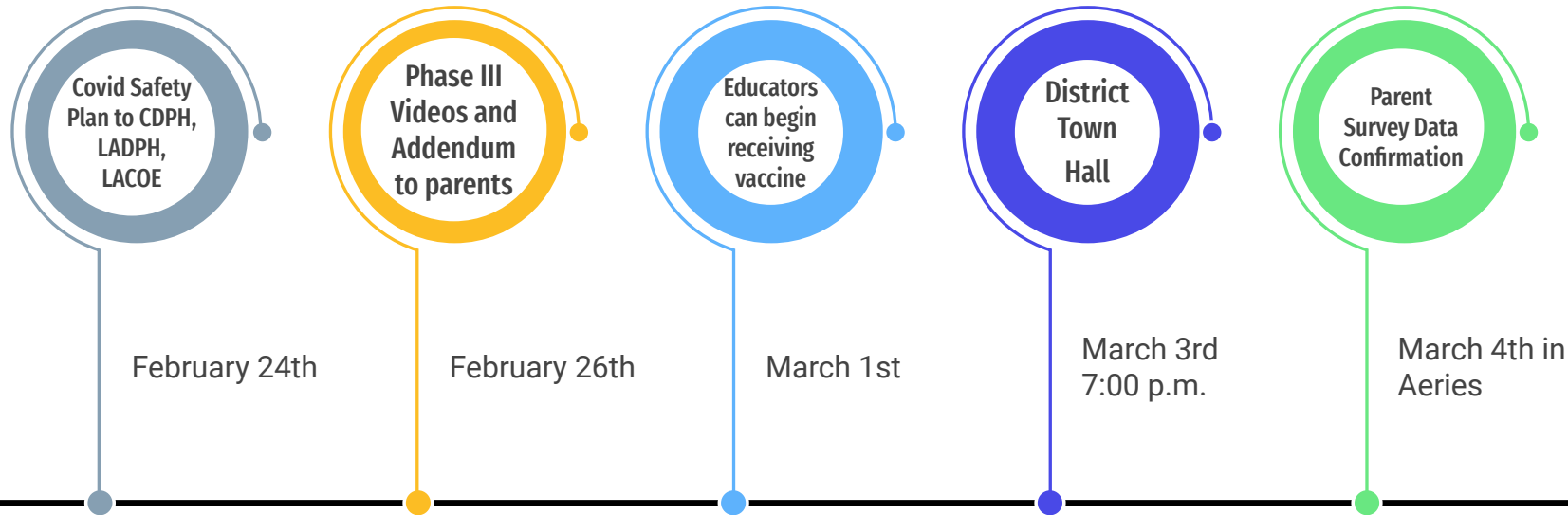


Business Department Update

- HEPA High-Efficiency Air Cleaners
- Front Office Barriers
- HVAC Engineering Evaluation
- Liability



Timeline to Phase III Implementation



In-Person Groups-What's the Difference?

Small Cohort Groups

Target support for students

Maximum of 14 students; 2 adults

25% of school's enrollment

Stable Classroom Groups

No Maximum: However, as space allows for the required 6 ft physical distance

No mixing of classroom groups

2 Fixed membership in-person groups per elementary site

PHASE I

- 100% Virtual Academy Learning Model
- Teachers are able to teach on campus
- No students or outside visitors on campus

PHASE II

- Connectivity Grades 6-12
- EL Cohorts Grades 1-12
- SEW Cohorts Secondary

- Less than 25% of site enrollment
- Six feet physical distancing
- Small group cohort supports
- PPE for all students and staff
- No participant contact
- No shared equipment
- No vulnerable or immunocompromised individuals involved
- Maximum of 14 students and 2 adults per small group cohort

PHASE III

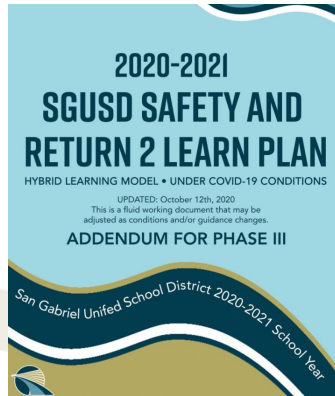
TK-5th Grade

- PPE for all students and staff
- Six feet physical distancing
- No Participant contact
- No shared equipment
- Vulnerable or immunocompromised individuals physically distanced with PPE
- Athletics begin to be phased-in following LACDPH guidelines
- Intervention supports
- Changing rooms open with physical distancing
- Concurrent Teaching for in-person and online students
- Stable in-person classroom groups
- Teachers can only work with maximum of 2 stable in-person groups
- Inclement weather students attend virtually

What to Expect in Phase III...

Communications with Parents

- Town Hall
- Video messaging
- Phase III Addendum



Join Us for a Virtual Town Hall: SGUSD's Reopening of Schools



Online Event with
Superintendent, Jim Symonds
& District Panelists
Wednesday, March 3rd at 6:00 p.m.



Parent Aeries-Data Confirmation for Phase III

1. Aeries is currently storing Parent/Guardian choices for Phase III (Stable in-person groups or 100% Virtual Academy).
2. The choice parents made is visible through Parent Portal.
3. A March 4th email will remind parent/guardians of the choice recorded in Aeries. If they want to change their choice, they can contact the school site.
4. Efforts will be made to connect with families who have never made a choice (email, text, phone calls, etc.).
5. The information in Aeries is accessible to all sites to support planning.

DF	No Choice Made
HB	Hybrid
VA	Virtual Academy

R2L
HB

