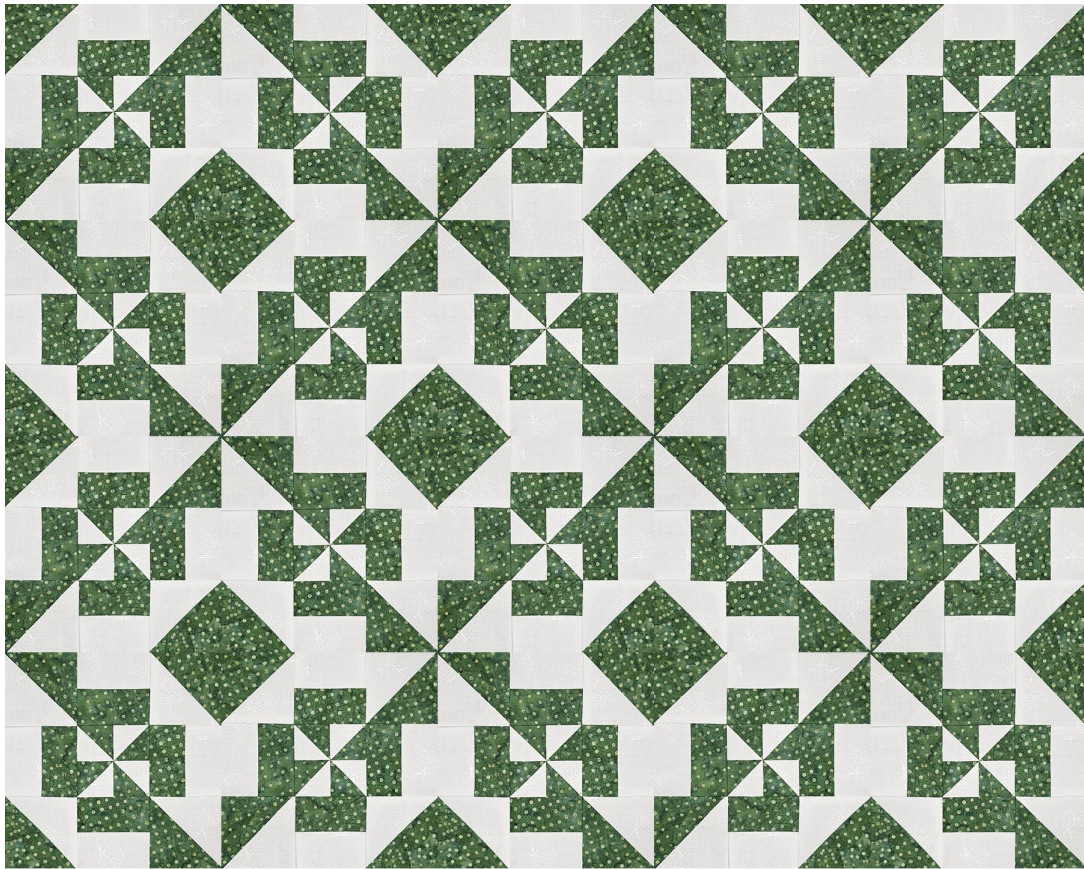




Brita Nelson
The Questioning Quilter

Information for Quilters with Questions

Emerald Isles
A Disappearing Pinwheel Quilt.



Happy March! What could be a better quilt for March than an Emerald Isles Quilt made of 4-Leaf Clover Blocks. Best of all, this is a super easy Disappearing Quilt.

Many of you have already seen the video, but if you haven't, you can watch me make this on YouTube: <https://youtu.be/Vp3DOzTWzCo>

I chose 5" squares turned into 4 3/8" Half Square Triangles (HSTs) and results in a 6 3/4" finished block. The version shown here is made up of 20 blocks arranged 4 X 5. It measures 27" X 33 3/4". This would work as a wall hanging but since you might want to use this design to make a bigger quilt, I have included the fabric requirements for a Baby Quilt as well as for a Twin/Full size bed.

Fabric Requirements:

Baby Quilt (6 blocks X 8 blocks) 40.5" X 54"

1 1/2" yards light fabric

1 1/2" yards dark fabric

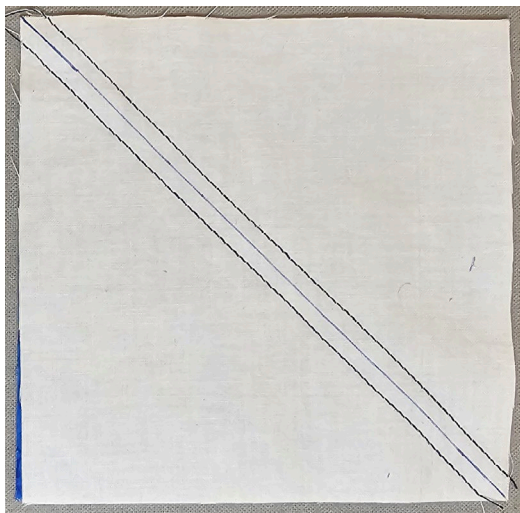
Twin/Full Size (11 blocks X 14 blocks) 74.25" X 94.5"

5 1/2 yards light fabric

5 1/2 yards dark fabric

Make the Half Square Triangle Blocks (HST's).

Everything starts with 5" squares



Put a 5" white square on top of a 5" dark square. Draw a line down the center and sew a scant 1/4" on both sides. You can make your HST's any way you want.



Trim the HST's to 4 3/8" X 4 3/8"

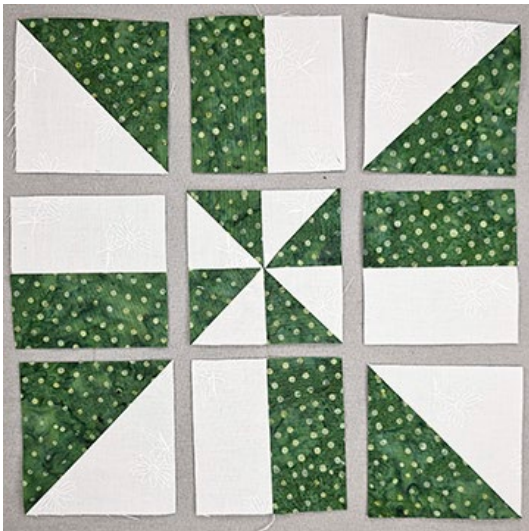
Each Block requires 4 HST's



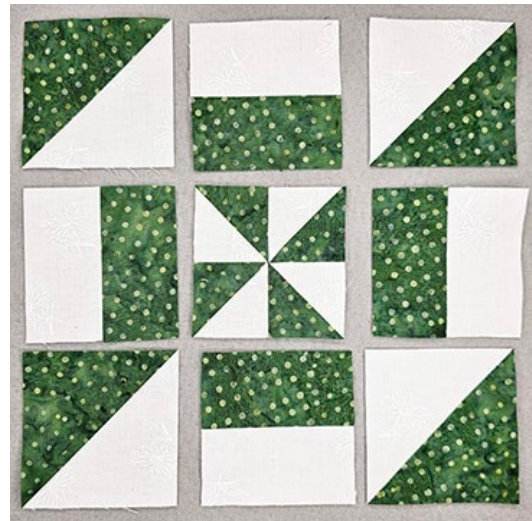
Arrange the HST's as shown above. You will be making a Pinwheel Block that rotates Counter Clockwise.



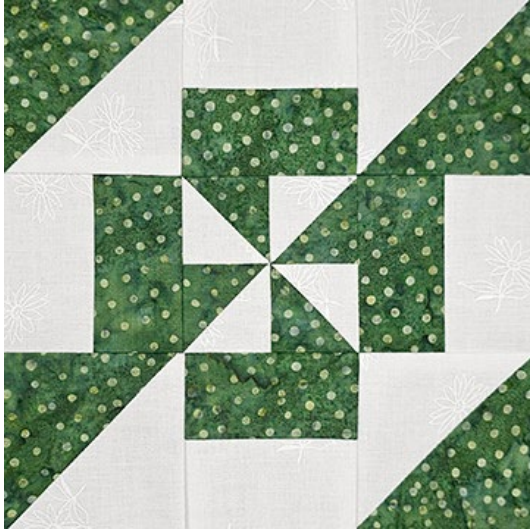
Sew this into a Pinwheel Block. Please notice the rotation of the Pinwheel, it is important that it rotates Counter Clockwise.



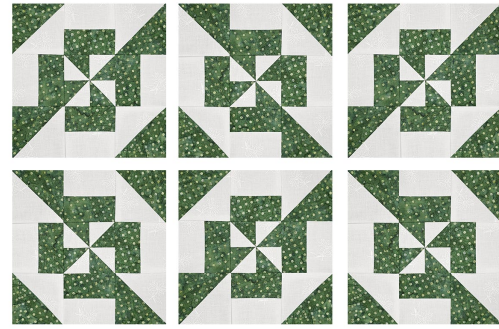
Make 4 cuts, each $1 \frac{3}{8}$ " from the center seam. This will result in 9 sub-blocks.



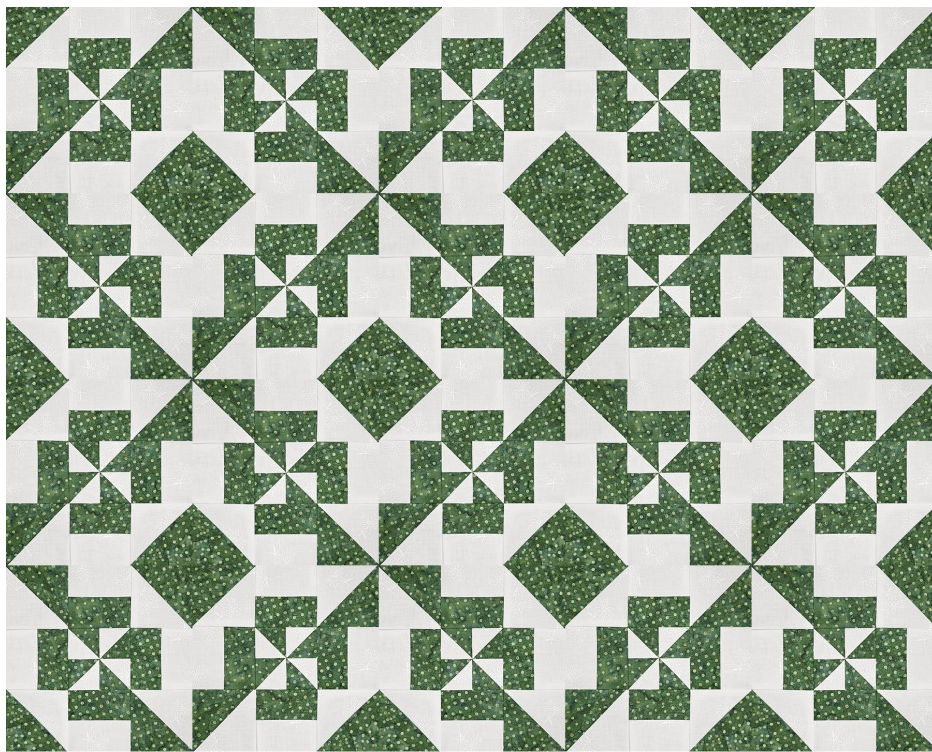
Arrange the sub-blocks as shown above.



Once sewn together, the block will look like this.



Arrange the block alternating the direction of the diagonal line. For the top row, the first block slants to the right, the second to the left, then back to the right. For the second row, the first block slants to the left, the second to the right and the third to the left. Continue this pattern.



Here is what it looks like when it is finished.

But Wait, there's More

The video also shows multiple color options for this quilt.

<https://youtu.be/Vp3DOzTWzCo>



You will need 4 different HST's.

1. Dark green and light green
2. Dark green and Peach
3. Red and light green
4. Red and peach



These HST's are sewn into a pinwheel as shown here.



The pinwheel is cut into sub-blocks and rearranged exactly as shown above.

When sewn together the new block looks like this.

Arrange all the blocks into this amazing quilt.



I have even more disappearing videos on my channel: <https://www.youtube.com/questioningquilter>

Stay Well and Happy Quilting,

Brita

brita@questioningquilter.com

Copyright 2024 by Brita Nelson This pattern can not be copied or distributed without express written consent of the author. I have made every effort to ensure that the instructions in this pattern are accurate and are presented in good faith but no warranty is provided nor results guaranteed. The author shall have no liability to any person or entity for loss or damage caused by the information in this pattern. If you have any questions or issues with anything regarding this pattern please email me at brita@questioningquilter.com