

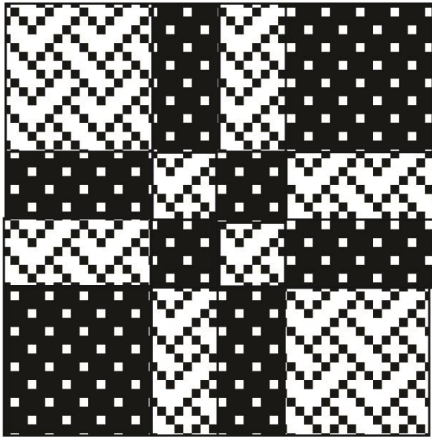
Disappearing Four Patch

54 x 54 or 72 x 72 with border



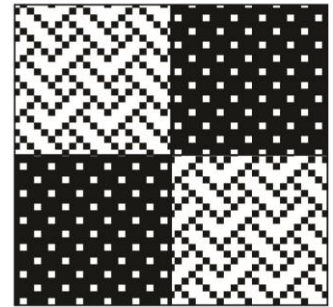
Linda Hasselberg
HASSLE-FREE
Patterns

Disappearing Four Patch

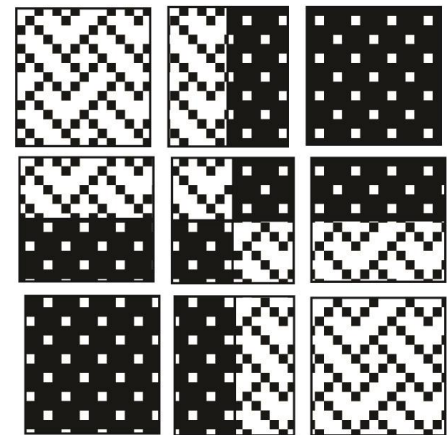
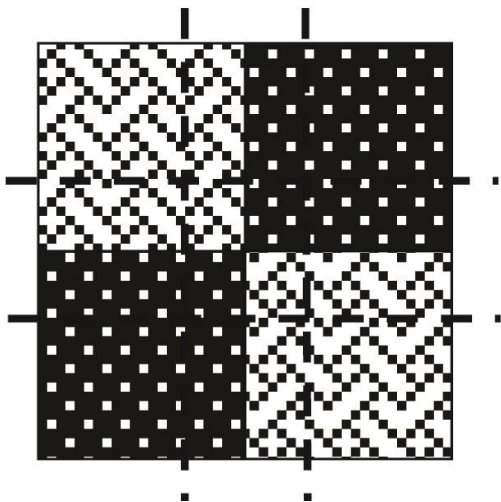


Years ago, this was known as 4-to-9 Patch. You see it now as Disappearing Four Patch. It's like many of the patterns throughout quilt history-- Different names for the same block.

Sew two solids and two prints into a four-patch. Press seams to the dark.

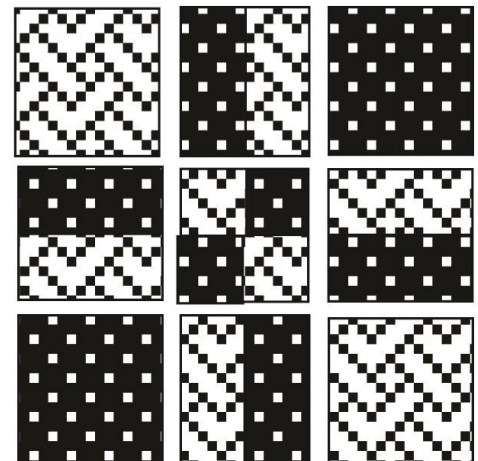


Cut 2 1/2" from the center in all four directions. Dotted lines are the cutting lines. Do not move pieces as you cut.



Rearrange the center cut sections; swap the top center with the bottom center and the right center with the left center. Sew the sections together for the finished block.

Press each row of 3 opposite directions, nesting seams.



Disappearing Four Patch

Finished block makes an 18½" block, finishes 18" in the quilt.

Arrange blocks three across and three down.

Optionally, add a 9" (9 ½") border and use 4 -10" squares to make a disappearing 4-Patch divided into 4 -9" blocks for cornerstones of your border, or trim 4-10" squares to 9 ½" for cornerstones.

Layer with batting, backing and quilt. Cut 6 binding strips 2½" wide and join together to bind your quilt.



Disappearing Four Patch

Fabric Requirements:

At least 36 -10" squares (54 x 54)

- 18 different prints or colors + 18 background color (1 1/2 yards), or...
- 36 various prints or colors for a more scrappy quilt, or...
- 1 Layer Cake

Plus,

- 2 3/8 yards backing fabric
- 1/2 yard binding fabric

With Borders (72 x 72)

- Plus, 4 more squares for border cornerstones.
- 1 1/2 yards border fabric
- 4 yards backing fabric
- 5/8 yard binding fabric

NOTE: One pack of 40 -10" squares, plus 3 yards of background fabric cut into 40 - 10" squares will make 4x5 (20) 18" blocks for a 72 x 90 twin. border.

This pattern may not be copied or transmitted in any form without prior permission. You may make and sell as many projects as you desire using this pattern. Please credit design to:

Linda Hasselberg / Hassle-Free Patterns of Wimberley Stitch Studio

704 FM 2325 * Wimberley, Texas 78676

512-808-0490 www.wimberleystitchstudio.com