



Ashfield sports Club

Walking football Just Walk in and play

6pm every Friday starting 12th April 2019

Ashfield reserve, Haig St, Ashfield

No experience required, Over 50's, Under 50's, men, women, fat, unfit, arthritic, players, ex-players, never played before!

All welcome

No special equipment required just a pair of enclosed shoes and a willingness to have fun.

Come and give it a go!

Contact: Secretary@Ashsfieldsportsclub.com.au

IGA ASHFIELD
How the locals like it!

3A COLSTOUN RD ASHFIELD



HOT BUFFET
COFFEE
FRUIT SALAD
FRESH SALAD
CATERING AVAILABLE

from \$7.99
from \$2.99
from \$4.99
from \$4.99

20% Off

PURCHASE ANY SIZE
BUFFET MEAL AND SAVE
20% OFF THE PRICE.

VALID UNTIL THE 31/7/2019. NOT VALID WITH
ANY OTHER OFFER. VOUCHER MUST BE
SURRENDERED UPON REDEMPTION



MAY 2019

Helping to build a better community **Ashfield** ^{CAN!}

ISSN 1839-3071

Vol 9 No 1

ashfieldcan2018@gmail.com

www.ashfieldcan.info

Family Fun Day

Gary Blanch Reserve
Saturday Arvo
18th May

1 - 4pm

FREE

Face Painting, Everlastings Planting

Family Yoga, Soccer Sessions,

Historical Display, BBQ

Kids Craft Activities



Come and discover the history of Ashfield at the
Bassendean Historical Society Display at the Fun Day

President's Message

First, I'd like to thank Dave Kelly MLA for Bassendean, for organising and facilitating the community forum which took place on Thursday the 28th of March. A unified community voice got the Western Australian Planning Commission (WAPC) to agree to remove the temporary fence erected at the Ashfield Flats and hopefully the WAPC honours its commitment for further community consultation.

Secondly, I would like to recognise AshfieldCAN executive member Emma Slavin for her passion and dedication in the efforts in regards to the fence. Emma did an excellent job corresponding with the Minister for Planning Rita Saffioti, asking her to consider ministerial intervention and liaising with Community Newspaper to raise further awareness of the community's issues with the construction of the temporary fence. Emma also spoke passionately with a coherent argument on behalf of AshfieldCAN at the town forum on the importance of community support in any successful environmental rehabilitation project. Thank you, Emma, your hard work and dedication to the issue is appreciated by all AshfieldCAN members.

I am looking forward to the Family Fun Day at Gary Blanch Park and encourage you to join us for what should be a good day, hopefully I will see you down there. I also encourage anyone who would like to get involved to come along to the next AshfieldCAN general meeting at the Ashfield Sport Club, our next meeting is scheduled for Monday the 6th of May at 7pm.

Simon Perree
AshfieldCAN President



We are excited to have recently launched "BassenDream Our Future". This is a community engagement project through which a new vision will be developed for Ashfield, Bassendean & Eden Hill.

The "BassenDream Our Future" project team, supported by Creating Communities and Collaborative Place Design, has begun working alongside the local community to understand what you value about your Town and your neighbourhood and how these could be made even better in coming years. This is an opportunity for you to shape the future of your community. The feedback gathered from the visioning process will inform a number of local initiatives, primarily the development of a new Local Planning Strategy (LPS). A Local Planning Strategy is the key document that sets out a local government's objectives for the long-term planning and development of an area. Perth is growing, and by 2050 the Western Australian State Government predicts that an additional 800,000 homes will be needed to accommodate for the rising population. In order to minimise urban sprawl and the negative environmental, economic and social impacts that come with it, roughly 47% of these additional homes will be built in existing suburbs. The State Government has allocated the Town of Bassendean a target of an additional 4,150 homes by 2050, meaning the current LPS needs to be reworked. But preparing for additional homes is not the only purpose of a LPS. It is essential that our Town's new Strategy remains relevant and in line with our community's vision for the future.

Through BassenDream Our Future, the planning needs of our Town will be carefully considered alongside the community needs for the future with a focus on preserving the character and spirit of our Town.

The project will run from April – September and there will be many opportunities for you to share your ideas, but the best place to start is to pop in to the "BassenDream Our Future Ideas Hub" and have a chat with representatives from the Town and Creating Communities. The Ideas Hub is open 9am-5pm Monday to Friday in the Old Post Office at 31 Old Perth Road, Bassendean. There will also be a mobile Ideas Hub coming to Ashfield in the coming months.

We aim to hear the thoughts and ideas of as many people in our community as possible so would encourage everyone to contribute their voice.

For more information or to sign-up for future engagement opportunities please visit: www.yoursay.bassendean.wa.gov.au/BassenDream-Our-Future

Cr. Renne McLennon - Mayor

**Swan River currents and connections:
realising a 2029 bicentenary
Town of Bassendean Annual Library
History Lecture**

Place: Bassendean Memorial Library
When: 19 June 2019
Speaker: Gina Pickering
(Independent Curator and Writer|Latitude Creative Services)
Book for your free ticket (for catering purposes)
www.trybooking.com/BAIXR

Lookout Update

Readers will be aware several years ago AshfieldCAN 'discovered' a vacant, unloved piece of land hidden away on the escarpment overlooking the Ashfield Flats wetland.

The land, situated on Hardy Road adjacent the intersection with Villiers Street, provides a unique outlook over the Wetlands and its environs, and a wonderful uninterrupted view to the Darling Ranges.

We were excited as we recognised the land, vested in the WA Planning Commission, would make an ideal location for a small, simple park. A tranquil park, to which people could walk and sit, appreciate the peaceful outlook, observe the wildlife and wonder at the ever changing vista as the day and seasons unfold.

We set about identifying how this could be achieved. Taking people along with our vision and overcoming concerns was important. To this end we engaged at the political and local level holding a series of on-site and community information sessions.

Importantly we obtained the enthusiastic support of the WA Planning Commission, the Town of Bassendean and our Local Member of Parliament Dave Kelly. Dave's

support included providing a grant to help fund the park's establishment.

Thankfully, overcoming the inevitable regulatory issues and other concerns has now largely been achieved.

A professional concept plan was developed with the community and has since been presented and endorsed at a recent community meeting. We are now able to progress to the next stage which will involve accessing the grant funding. We will then identify and engage a local artisan to construct the central feature, a simple stone-based bench seat. We will also begin recruiting community volunteers who can assist with landscaping; creating the peaceful environment we seek. This work will include identifying and planting appropriate vegetation such as low profile, low maintenance ground covers and shrubs that are both drought tolerant and bird attractant. Importantly WAPC have agreed to install an environmentally suitable meandering pathway and the Town of Bassendean has been approached to support maintaining what is envisaged as a very low-maintenance, quiet, contemplative lookout and wildlife observatory.

We believe this lookout will harmoniously dovetail with the work currently being undertaken via a comprehensive hydrological study of the Ashfield Flats

Wetland, the largest remaining salt-marsh wetland on the Swan River estuary, providing a unique opportunity to engage with and observe this work in progress.

Should you wish to volunteer to participate in creating this lookout park please send your details via the AshfieldCAN Facebook page, email us at ashfieldcan2018@gmail.com or attend our next meeting which will be held at the Ashfield Sports Club at 7pm Monday 6 May 2019. We will keep our Facebook page and website updated as progress is made.

Bob Brown Vice President
AshfieldCAN

**For contributions to this newsletter
call Dave Love on 0428 244 480**

**Neighbourhood Watch Notes un-
available this issue, to assist with
Neighbourhood Watch contact:
ashfieldcan2018@gmail.com**

AshfieldCAN Committee
President- Simon Perree
Vice President - Bob Brown
Treasurer - Mark Johnston
Secretary - Lenny McLeod

ADVANCE PRESS

Your local print and communications provider.

We are a leading Western Australian-owned print and communications provider, offering a unique service to a diverse range of customers. Some of our products and services include:

- Offset printing
- Digital printing
- Personalised service
- Desktop publishing
- Graphic design
- Large format posters and banners
- Online print ordering
- Print management
- Point of sale products

186 Railway Parade
Bassendean WA 6054
Tel 08 9376 4000
Web advancepress.com.au



Award Winning Plumbers

Master Plumbers and Gas Fitters
Association of WA
2008 Plumbers Licensing Board
Plumbing Business of the Year

289 Guildford Rd, Maylands WA 6051
Ph: (08) 9271 4021 Fax (08) 9370 4750
water@prideplumbing.com.au
www.prideplumbing.com.au

BEN LUDLOW Auto Service Centre

**For all your
Vehicle Servicing
Needs**

Unit 2, 15 Pearson St, Ashfield

**RING
9279 1483**

Dave KELLY

Representing
Ashfield in
State Parliament



e dave.kelly@mp.wa.gov.au
p 9279 9871
w www.davekellymp.com

Ashfield is part of the State Electorate of Bassendean





UWA students helping with geophysics and sampling in the Chapman St Drain



Hydrological Study on Ashfield Flats

WANTED information about Jacqueline Street

Do you know about Jacqueline Street?

Some of the street name origins in the Town of Bassendean are unknown including Jacqueline Street which borders the City of Bayswater. Who was Jacqueline? A wife, aunt, daughter, sister, mother? If you know, please contact the Local Studies Librarian, Janet Megarthy in the Bassendean Memorial Library.

baslib@bassendean.wa.gov.au 9279 2966

The Department of Biodiversity Conservation and Attractions (DBCA) has commenced a scientific study of the hydrology of the Ashfield Flats Reserve. The Department of Planning and Heritage contributed \$200k to the study and DBCA recently employed a hydrologist, Dr Gavan McGrath, to work full time implementing the monitoring program as an in-kind contribution. Dr McGrath has more than 20 years' experience undertaking hydrological investigations as a consulting Environmental Engineer and in research with his work on drought featured in Nature magazine's research highlights. He has variously research water quality issues, pesticides, plant water use, and urban hydrology.

The objectives of the hydrological study at Ashfield are to quantify the amounts of water in various pathways flowing into the wetlands and draining out to the Swan River. The water quality will also be assessed to give insights into the water flow pathways as well as an indication of legacy contamination issues that may need to be addressed in the future.

Dr McGrath has recently completed a drilling program and is undertaking a geophysical survey of the area and recently engaged students from the University of Western Australia (with the help of Prof. Andrew Rate) to sample drain sediments, including measurement of microplastics. He would really like to hear from potential volunteers who could contribute to monitoring, a bit of mundane labour helping with geophysics or locals who could help piece together a history of the hydrology of the site. The study is expected to continue throughout 2019 and into 2020. If you can help or are interested in contacting Gavan his email contact is: gavan.mcgrath@dbca.wa.gov.au.

Editors Note:

Dr McGrath addressed the AshfieldCAN meeting on Monday the 8th of April. We appreciated his explanations and insight into the area so far. AshfieldCAN thank him for taking the time to attend the meeting and for his work so far.

Local Handyman Services

Gardening Household Repairs
Lawn Mowing Gutter Cleaning
Reticulation Rubbish Removal

For a Free Quote, contact **Des**
0422 914 521

des@ashfieldgm.com.au

All Jobs Considered



ASHFIELD
Gardening & Maintenance
Qualified Tradesperson . National Police Clearance . White Card . Fully Insured

Bassendean Historical Society Display

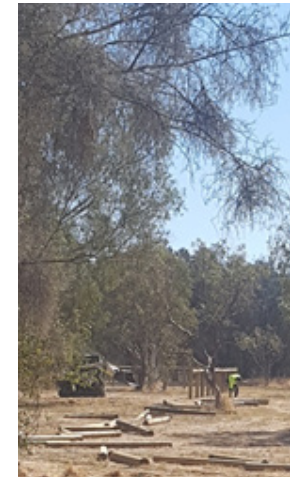
"Curious about the history of Ashfield? Ever wondered why your street has the name it does? Keen to see how the suburb looked in years gone by?"

Bassendean Historical Society will have a display at the upcoming AshfieldCAN [Family Fun Day], with photos, maps, news articles and stories from Ashfield's past. We would really like everyone to pop in, to both learn about the past and share your memories with us.

Please contact Sarah on 0407 018 926 or Mark on 0412 131 354 for details, or to contribute items to the display.



GOING



GOING



GONE

River Exclusion Fence

Ashfield Community Action Network has a long and abiding love of the Ashfield Flats. It is so important to so many people for so many reasons.

We were dismayed therefore when an ill-conceived barrier fence, which served no logical purpose, was hastily erected through the heart of this precious area.

For this reason, we strongly objected, and because of our protest, and with the support of strong and informed members of our Bassendean community, the fence was removed.

With this awful episode behind us we can now rejoice in the knowledge the Hydrological study of the all-important Ashfield Flats Wetland is well underway.

Doctor Gavan McGrath, who is heading up the study, is seeking the assistance of volunteers to help with some of the tasks; nothing too onerous but if you own a good set of gumboots, he would love to hear from you. If you can help, please contact Gavan on email gavan.mcgrath@dbca.wa.gov.au .

Once he and his team have a comprehensive understanding of this complex area and it's interaction with the river good people, in consultation with the community, can put in place sensible measures to ensure the wetland once again contributes to the health of the entire estuarine system rather than detracting from it. Importantly, following this study, effective and comprehensive measures that protect our river bank, whilst allowing us to stay intimately connected, can be considered.

We wish to acknowledge the support and genuine strength of resolve demonstrated by our local Member Dave Kelly and Matt Darcey, the Assistant Director General, Planning Lands and Heritage, as well as Minister Rita Saffioti for recognising the potential for harm and alienation this barrier fence would cause. We are sure it will be put to good use elsewhere.

Bob Brown Vice President

Dave Kelly Message

It is clear our community has a strong connection to the Swan River and the Ashfield Flats, for a variety of reasons. Which is why there was concern after the Western Australian Planning Commission (WAPC) installed a fence without warning. I was happy to facilitate a community meeting with WAPC representatives, and an Assistant Director General from the Department attending.

I am pleased the WAPC listened to the community, and agreed to remove the temporary fence.

I think everyone agrees that a plan is needed to protect the Ashfield Flats.

With more communication and consultation between Departments, Town of Bassendean, local community groups and the wider community I think we can find a solution that everyone can be happy with.

Thank you to everyone who attended the community meeting.

Dave Kelly

Faulding Glucosamine 1500g 100 tablets \$11.95



**ASHFIELD
COMMUNITY
CHEMIST**

Your chemist in Ashfield

Open: Mon - Sat 8am - 7pm

**1B Colstoun Rd, Ashfield
Western Australia 6054**

(08) 6161 9958

ashfieldchemist@optusnet.com.au

SHAMEFUL SPEEDING

**ALL PHOTOS TAKEN IN A
5 KNOT ZONE**

**DISREGARD FOR SAFETY
OF OTHERS**



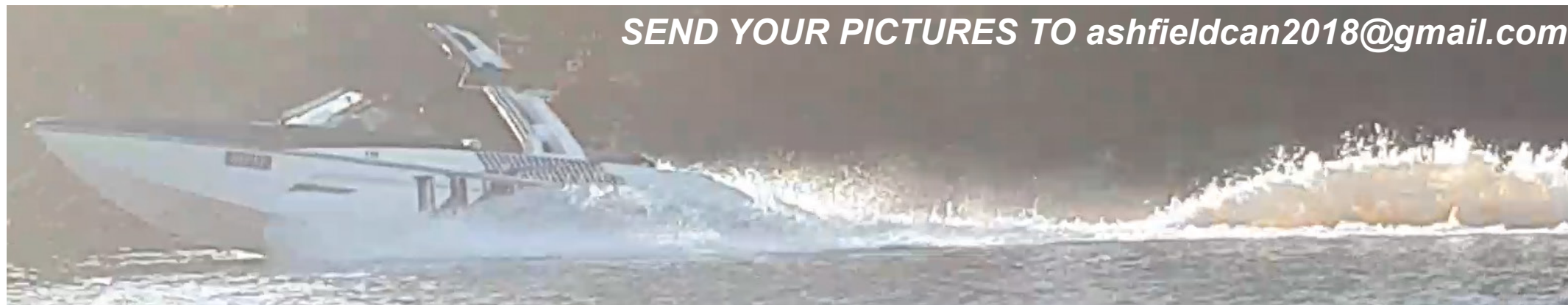
**MAJOR CAUSE OF
RIVERBANK EROSION**

**IRRESPONSIBLE
SKIPPERS**

**Water Police
9442 8600**

**Speeding Boats Report
Number 13 1444**

SEND YOUR PICTURES TO ashfieldcan2018@gmail.com



*Letter from AshfieldCAN to Transport
Minister Rita Safioti and MLA Dave Kelly*

Dear Minister,

I write on behalf of the Committee and Members
of the Ashfield Community Action Network –
AshfieldCAN.

Our Network has an abiding interest in the
Ashfield Flats, reputed to be the largest remnant
salt marsh wetland on the Swan River Estuary.
Since the industrialisation and development of
the Bassendean area, the wetland has suffered
degradation from human intervention and activity.

However, in recent times the State Government
has recognised the areas value by now committing
to undertake a comprehensive hydrological study
that may eventually result in the wetland again
contributing to the health of the entire river system
rather than detracting from it.

Of particular concern to AshfieldCAN is the effect of
boat traffic on the estuary; traffic that is only set to
increase with downstream tourist development and
attractions. Not only are speeding boats dangerous
to other river users, they generate high velocity
waves which erode the fragile clay riverbank and
impact on the wetland itself. Whilst other methods
of protecting the riverbank including revegetation
are being considered, the inevitable effect of boat
generated wave action will undoubtedly erode
these measures over time.

We are aware laws exist that limit speeds on this
narrow section of river however it is generally
acknowledged that these restriction are often
ignored. We ask therefore, what is the sense of
these laws if they are not enforced?

Whilst we acknowledge there are limitations on
what can be achieved, we ask that you consider
a combination of a community awareness or
education programs, combined with greater levels
of enforcement. We also understand the community
itself can play a role in support of any Government
efforts. The community was recently asked to
provide photographic evidence of speeding boats.
This initiative is being embraced and we thank you
for the opportunity to participate.

A suggestion put forward at our recent meeting was
the installation of fixed speed cameras positioned
at strategic locations on the river between Ron
Courtney Island and Sandy Beach Reserve. However,
some figures provided to us on implementing
this initiative would seem cost prohibitive. As an
alternative, you may consider a trial period of semi-
permanent or mobile cameras at times of high boat
traffic. The resultant prosecutions could offset
costs and be employed as part of an education
program. There is no perfect solution but we feel
this would make a significant difference.

Whilst I can only speak for the membership and
committee of AshfieldCAN, I believe the Town
of Bassendean would also embrace any effort
to protect our riverbank and we know, from the
feedback we have, that the entire community would
favour greater controls.

We look forward to your response and
supporting sensible initiatives to enhance
the health of the Ashfield Flats and the river.

Simon Perree
AshfieldCAN President