



Notes from Verna
Suburb Manager
Ashfield
Ph: 0432 563 800

This morning I rang Senior Sergeant Ian North in charge of Kiara Police Station for an update on crime statistics in Ashfield. He was able to inform me that things in Ashfield had been relatively quiet recently. He also advised that no valuables or keys should be left in cars as this can lead to opportunistic crimes, which is often the case at shopping areas and other crowded places.

Congratulations to all those residents who have joined Neighbourhood

Watch and have displayed their signs as this acts as a visible deterrent to criminals. Signage however does not replace constant vigilance. When out and about, we need to be aware of what is going on around us, not only for our own personal safety, but also because accurate witness information can be of assistance to police.

I imagine most Ashfield residents have been aware that some of the ugly old bus shelters around Ashfield have metamorphosed into very attractive works of art. Congratulations to Lucy Bromell and all the students involved. This project has been made possible by a grant from the Neighbourhood Watch Australasia Community Funding Program.

If you would like to support our great suburb by joining Neighbourhood Watch, you can e-mail me at: verba1@optusnet.com.au

Joys and Hazards

Ashfield Gardening



Geoff Addison was enjoying this garden visitor until he left something behind!

We're on Facebook!



AshfieldCAN is now on facebook. Like our page for all the latest Ashfield news, info and events.

MAY 2014

Helping to build a better community - **Ashfield**

ISSN 1839-3071

Vol 4 No 1

www.ashfieldcan.info

WE NEED YOUR HELP

★
Contributions from residents - long time and new for your newsletter

★
Pictures for your newsletter

★
Volunteers for our Gary Blanch Reserve Redevelopment

★
Attendance at our monthly meetings. Next meeting on 26th May at the Ashfield Sports Club



A concern that is often raised at our meetings is the level of erosion occurring on Ashfield Flats and the foreshore in general. This is something we feel needs to be addressed especially as there are so many mature trees about to be lost into the river. We are keen to support any efforts that will improve this situation.

Fabulous New Bus Shelters



On special while stocks last.

Vitamin "D" Ostelin 60 capsules - only \$9.95



New chemist in Ashfield
(next to Ashfield IGA)

Open: Mon - Sat 8am - 7pm

1B Colstoun Rd, Ashfield
Western Australia 6054

(08) 6161 9958
ashfieldchemist@optusnet.com.au

Ashfield Specialist



"Award Winning Plumbers"

Master Plumbers and Gas Fitters
 Association of WA
 2008 Plumbers Licensing Board
 Plumbing Business of the Year

289 Guildford Rd, Maylands WA 6051
 Ph: (08) 9271 4021 Fax (08) 9370 4750
 water@prideplumbing.com.au
 www.prideplumbing.com.au

Just the Ticket Bus Shelter Renovation

Thanks to the generous support of Neighbourhood Watch Australasia the BUS SHELTER PROJECT has now been completed with students from Cyril Jackson Senior Campus.

Certificate II students from Cyril Jackson Senior Campus have had the opportunity to work with urban Artist, George Domahidy to learn the process of creating aerosol art so that they can beautify the bus shelters with their designs.

Teacher Loretta Lincoln said that it was a fantastic opportunity for the students to demonstrate their talents.

Sessions were initially held in the classroom to develop ideas and have now been realised as the artwork on the bus shelters.

The end results have been a fantastic

improvement to the streetscape in the Ashfield area.

With the assistance of artists George Domahidy and Lucy Bromell, four bus shelters were painted with designs developed by the students. These included one bus shelter that had a 'steampunk' theme and another that was painted in the 'Anime' style on Hardy Road. The French Street bus shelters had themes of Ashfield forest and fantasy.

The AshfieldCAN would like to thank the student of Cyril Jackson Senior Campus for all the hard work helping to make our streetscape look a lot brighter.

This project was funded by the AshfieldCAN and Neighbourhood Watch Australasia.

AshfieldCAN Christmas BBQ



Chef Ian Bromell

We celebrated another successful year of the AshfieldCAN with the Christmas BBQ which was well attended again. Getting together as a community to celebrate the end of the year and our achievements is such a worthwhile and positive thing to do.

Garage Sale to Return

The National Garage Sale Trail will be returning to Ashfield later in the year. Stay tuned for more information.

Dave Kelly

Report from Parliament

2014 is a year where the State Government has been looking to cut costs wherever it can. By doing so, it has been forced to defend its raft of broken promises and reductions to services.

Locally, both Ashfield Primary and Cyril Jackson have been hit hard this year as their budgets have been cut as part of the Government's education cuts. Examples of Ashfield Primary's cuts include:

- \$10,000 from Students at Risk Funding (this equates to a teacher for half a day)
- Approximately \$28,000 cut from the Aboriginal and Islander Education Officers (AIEO) time, reducing the time from 5 days per week to 2.5 days per week. The school has had to find funding from its own budget to bring it back up to 3.5 days per week.
- 2.5 Education Assistants have been cut.
- \$10,000 has had to be taken from the school budget for the Long Service Leave Levy.
- \$5,500 taken from the Library Officer position, which has reduced the time by half a day.

Ashfield Primary is only a small school and these funding cuts have had an enormous impact on the well-being of our kids. I will continue to work with the school's fantastic P&C to pressure the Government to change its mind.

The Government is also aggressively pursuing its privatisation agenda. While many of its measures are on a large and public scale, such as the privatisation of Midland Hospital, others are taking place more locally. The loss of Disability Support Services accommodation in Ashfield due to privatisation is very concerning.

As your local member, I will do all I can to defend the services currently available in Ashfield. I would also be interested to know how budget changes are affecting you. In the meantime, I look forward to working with AshfieldCAN to continue to drive local projects which will improve our area.

Dave Kelly – Bassendean State MP
(the electorate of Bassendean includes the suburb of Ashfield)

Ashfield Sports Club

Ashfield FC compete in the Football West State League Division One and this year are one of the favourites challenging for the league honours. Get down and support the reds at Ashfield Arena and while you are there ask about our social memberships and upcoming member functions.

We are looking to grow our supporter, volunteer and membership base and have positions available for men women and children of all ages. We can accommodate any social group and a number of indoor/outdoor activities. Get in touch and ask us how.

Our next four fixtures have been declared Community rounds therefore everybody that can provide identification displaying a local 6054 postcode will receive free entry (normally \$6) and discounted Memberships & Season Tickets if signing up as a member on these days.

17th May 2014 – Ashfield Vs Mandurah City

31st May 2014 – UWA Nedlands

16th June 2014 – Dianella White Eagles

21st June 2014 – Wanneroo City SC



Mobile Medical Service

A mobile medical service is available to Ashfield residents. This service is provided by Medicare Local and is available in Colstoun Rd next to the community Centre. For more details ph. 9279 6588

Letter to the Editor

How much money has been forked out for the rubbish we've now got on the section between the bridge and the steps on Ashfield Flats. Also the banks along Ashfield Pde. There should be an investigation into it.

THE BATTERY SHOP
P: 1300 138 139
E: battery@aapt.net.au
W: www.batteryswap.com
516 Guildford Road, Bayswater

Make sure your year runs smoothly!
Mention this ad before 28th June 2014 and we will take a further

\$10 OFF

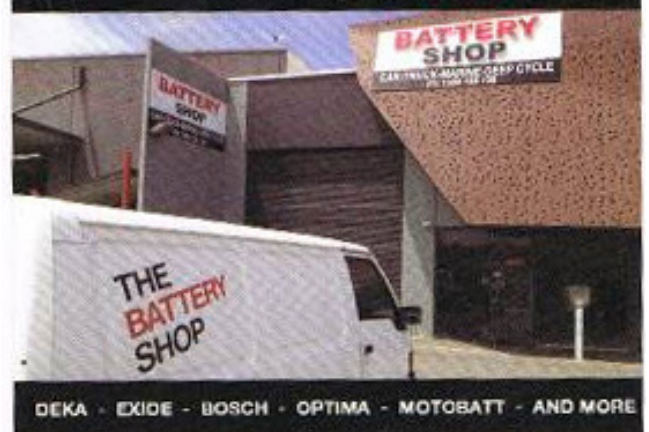
OUR ALREADY GREAT PRICES!

5 GREAT REASONS TO CALL THE BATTERY SHOP

- We will supply you the best battery for your budget
- We are locally owned and operated
- Batteries come with 2 or 3 year warranty
- Free battery and electrical check
- Free delivery and installation to Bayswater, Ashfield, Bassendean and Maylands

CALL US NOW ON 1300 138 139
OR VISIT US IN BAYSWATER.

CARS - 4X4 - TRUCK & BOAT - DEEP CYCLE - MOTORCYCLES



DEKA - EXIDE - BOSCH - OPTIMA - MOTOBATT - AND MORE

FOR ALL YOUR PROPERTY NEEDS, CONTACT YOUR LOCAL AGENT!

David Wellstead

0407 778 946

Specialist in Sales and
Property Management



Suite 3, 89 Old Perth Road, Bassendean, WA 6054.
www.professionalswellsteadteam.com.au

ToB Mayor's Merger Message

I would like to take this opportunity to keep you informed some of the recent decisions that have been suggested by the Town of Bassendean in the lead up to the possible merging with the City of Bayswater and parts of the City of Stirling and Swan.

The Town of Bassendean is currently involved in a Local Implementation Committee (LIC) with the City of Bayswater in preparation to the State Governments reform agenda for Local Government next year.

The Town's position has always been that it would only consider an amalgamation with the City of Bayswater to ensure that the process is equitable and to also allow residents a say in the future of both Councils.

The Council has recommended to the Local Government Advisory Board that if an amalgamation was to occur

between the Town of Bassendean and the City of Bayswater the name of the new Council should be the City of Bayswater-Bassendean in recognition that two whole local governments have been amalgamated. This will ensure that neither council losses their identity as part of the reform process.

The Town of Bassendean has also taken a fresh approach to the proposed ward structures that will give equal weight to all parties entering into the new formation with four wards of three elected representatives in each ward and a popularly elected Mayor.

The State Government is due to announce the final makeup for structural reform of local government sector in July this year.

Kind regards
Cr John Gangell
Mayor of Bassendean



Generous Rotary Support

Rotary member Bill Scanloan presented us with a cheque for \$10,000 at our Christmas BBQ which will be used for one of the Nature Play Zones in the Gary Blanch Reserve redevelopment. Thanks again!



Special Living in Ashfield Feature . . .

Gary Blanch Revealed

Works to Commence

Well now comes the exciting bit...

After just over 2 years of planning, chatting, dreaming, drawing, cups of tea, everlastings and a fair few meetings! Physical work is about to commence on the redevelopment of Gary Blanch Reserve.

At the Town of Bassendean council meeting on the 25th of February council voted unanimously to support our concept plan for the park and also to support our communities continued involvement in the project.

Since then we have been working with council to develop more detailed plans and to discuss the Project Execution Strategy and the community's role in the project as we go forward.

We have been encouraged by our meetings with Town of Bassendean officers who are enthusiastically embracing this project and look forward to continuing to work with them to bring the park project to life.

We would love to hear from people who are interested in being part of the project. As we go into this next phase there are many different opportunities. So don't hesitate to contact Emma for more info at emmaslavin@bigpond.com.au or on 0438 561 483 if you would like to be part of our park project.



"Green Drinks"

On the 26th of February Emma Slavin (pictured left, Gary Blanch Coordinator) and Lucy Bromell (President) attended an event in the city called "Perth Green Drinks"

Emma was invited to speak at the event about the work AshfieldCAN has been doing on the redevelopment of Gary Blanch Reserve.

The event was attended by over 200 people and we shared the bill with speakers from "The Beaufort St Network" and landscape architects "Placematch". The topic for the evening was New Urbanism and the role that communities can play in shaping the spaces we live in.

It was a great night; we received a fantastic response from the audience and had some terrific discussions with people afterwards. One the real positives to come out the evening was a new connection with Dr May Carter the Director of "PlaceScape" who was inspired by Emma's speech and has since become a great new supporter of the project. (see below)



New Supporter . . . PlaceScape

As mentioned in the previous article AshfieldCAN are very excited to have the support of PlaceScape a not for profit organisation dedicated to connecting people, places and landscapes.

"PlaceScape works with community groups and organisations, planners, designers and government agencies to establish useable green places in a range of settings, ensuring that public parks and open spaces can meet the leisure, recreation and social wellbeing needs of the people who use them" www.placescape.org.au

So we think they are a perfect fit for our project and they have already been providing us and the Town of Bassendean with advice and support when we have been discussing the specifications for the park and the scope of the project.

We thank them for their assistance so far and look forward to continuing to work with them in the future.

So who was Gary . . .

So who was Gary Blanch? Here finally is the definitive story of our local hero written by his cousin Jan Addison.

In 2000 the Pearson Street Reserve was renamed Gary Blanch Park in recognition of Gary's brave actions in an incident that occurred at the Ashfield Tavern in April 1989.

The Ashfield Tavern was located opposite the park and Gary was there with about 40 other people when an argument started between two men. This resulted in one of them bringing a shotgun into the bar with the intention of shooting the man he'd been quarreling with. Unfortunately a bystander not

involved in the dispute was shot dead and another man was seriously wounded in the stomach. The man the offender intended to shoot received minor wounds to his shoulder.

Gary with little regard for his own safety rushed the offender, grabbed the shotgun and hid it in the cool room.

In 1991 Gary was awarded The Bravery Medal by the then Governor General Bill Hayden. The Bravery Medal which is the third highest Australian Bravery Decoration is awarded for acts of bravery in hazardous circumstances.

Gary's family had lived in Bassendean since the 1920s. He attended Bassendean Primary School and lived and worked in the area all his life until his death in February 1993.



PhotoBooksWA

Birthdays, Holidays, Weddings, Christenings, Family Gatherings, and Precious Childhood Moments

Photo books are the best way to display your Special Memories

Visit us online and download our

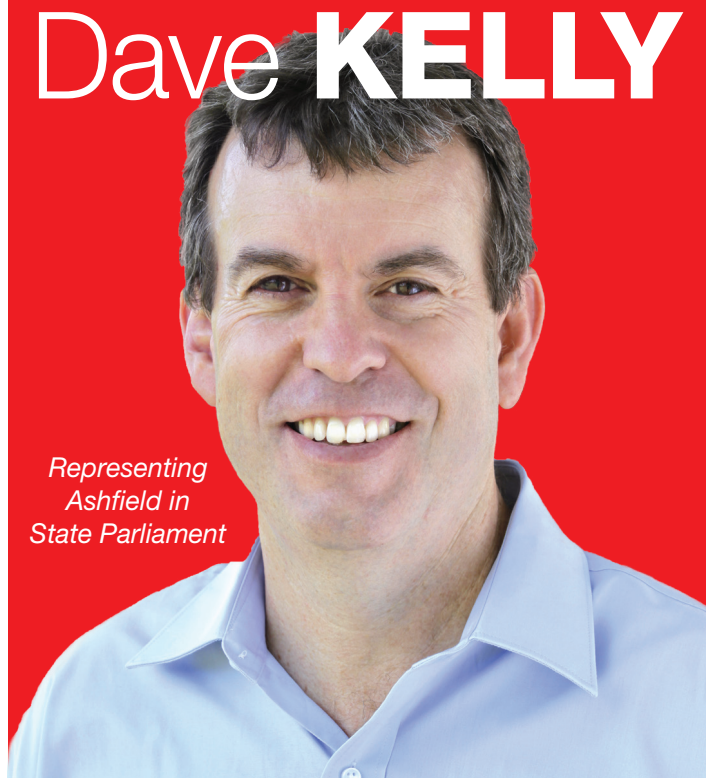
FREE
photobook software



WWW.PHOTOBOOKSWA.COM.AU

Dave KELLY

Representing
Ashfield in
State Parliament



e dave.kelly@mp.wa.gov.au

p 9279 9871

w www.davekellymp.com

Ashfield is part of the State Electorate of Bassendean



Gary Blanch Reserve Concept Plan

