



Notes from Verna  
Suburb Manager  
Ashfield  
Ph: 0432 563 800

#### Neighbourhood Watch

There are many benefits to becoming a member of Neighbourhood Watch (NHW) member. On joining up, you receive a free bag full of helpful pamphlets on how to minimise becoming a victim of crime, along with numerous stickers to place on both the outside and inside windows of your home, which help to deter would be intruders. So, if a friendly Neighbourhood Watch Street Representative comes knocking at your door, why not seize the opportunity to become a member, if you have not already done so.

There has been a recent spate of handbag snatching in some local shopping areas. To help minimise your chances of becoming a victim of this crime, the following tips may be helpful. Plan ahead, shop with a friend or family member if possible and walk along populated streets.

- Avoid taking short cuts.
- If you carry a purse, hold it tightly under your arm with flap towards your body.
- If walking on the footpath, keep close to buildings, with your bag held on your side which is away from the road.
- Do not carry more money than you need.
- Keep your house keys and identification separate from cash, credit cards and jewellery.
- Use an ATM machine only when you feel it is safe to do so.
- If possible, use EFTPOS facilities or ATM machines located inside the shopping centre.
- Some shopping centres have customer service staff who can escort you safely to and from your vehicle.
- Try to park as close to an entrance as possible.
- Always remain alert and aware of your surroundings.

#### IF IT UNFORTUNATELY HAPPENS TO YOU:

- Be prepared to give up your hand bag or valuables rather than risking injury.
- Try to note a description of the perpetrator/s to assist the police in identifying the offender/s.
- Try to note the registration number of any vehicle involved, along with a description of the same.

## Ashfield Soccer



The following is a match report from Saturday's Cool Ridge Cup Final. The report is courtesy of [www.footballwa.net](http://www.footballwa.net).

Bayswater City earned their first ever State Cup crown by defeating a gallant Ashfield 1-0 under sunny skies at Litis Stadium. A tight game looked to be heading for extra-time when Burton out-manoeuvred a couple of defenders and steered in from an acute angle with only seven regulation minutes to go. "It was what I planned but it was lucky to come off, if I'm honest," Burton said of his goal. "We worked hard all game and sometimes you get a lucky break." Nick Davies efforts in the Ashfield backline were recognised with the Stan Lazaridis Medal as man-of-the-match.

The defining moment arrived after 83 minutes, Andy Reale launching a long throw into the area which dropped between O'Mahoney and Davies for Burton, who turned and angled into Perkins' net from 5-metres. Spence denied Ashfield an equaliser with the very next play by tipping away Tom Kennedy's strike after Tristao and Branimir Mikulic combined in the lead-up. Ashfield were pushing forward in increasing numbers but neither Ryan Frisina nor Jamie Burns could get the finish they sought. The drama continued right to the end with Spence get to Alex Stamatiadis' cross just ahead of Frisina.

Ashfield assistant coach Paul Dundo was proud of his team's efforts. "I think the preparation that we did definitely showed out there today," Dundo said. "Myself and (coach) Matty (Carruthers) and the rest of coaching staff couldn't be prouder of the way the boys applied themselves and the way the boys went out there and really worked hard for 90 minutes. It's a little bit of a disappointment, but I'm happy with the way they played, so no complaints from that aspect."

#### Ashfield 0

Bayswater City 1 (Burton 83 minute mark)

Saturday 6th July 2013

E&D Litis Stadium Crowd approx 2750

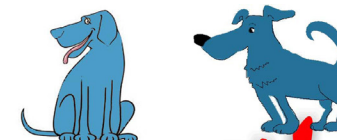
SEPTEMBER 2013

Helping to build a better community - **Ashfield**

ISSN 1839-3071

Vol 3 No 2

[www.ashfieldcan.info](http://www.ashfieldcan.info)



Ashfield

# Dog's Breakfast

9am. Sunday 13th October. 2013.

Ashfield Flats. Sandy Beach Reserve, West Road. Bassendean

Walk trails, breakfast cooked by the SES (gold coin donation) free tea and coffee games, prizes and demonstrations.....See you there!

For more information please contact. [info@ashfieldcan.info](mailto:info@ashfieldcan.info)



#### National Garage Sale Trail

hosted by AshfieldCAN and the Town of Bassendean

Saturday 26th October

Buyers Welcome between 9am - 3pm

Gary Blanch Reserve, Pearson St, Ashfield

Sellers - Carboot sale, \$10 registration per car, payable on the day. Register your interest at [www.ashfieldcan.info](http://www.ashfieldcan.info).

On the day set up at Gary Blanch Reserve from 8am. All sale goods, tables and chairs are the responsibility of the seller.

## AshfieldCAN Meeting

September 23rd 7pm

Ashfield Sports Club

All Welcome

## Local Planning Strategy

Public Information Sessions

Ashfield Sports Club

September 23rd

4pm - 8pm

No appointments necessary, drop in for an informal discussion.



Available at

# Ashfield IGA

Everyday price  
\$9.99

Steggles No 12 Cooked Chicken



Delicious rotisserie chickens available here.





# Colstoun Rd Safety Issue

An officer from The Ministry for Transport has responded to the AshfieldCAN request for traffic lights at the corner of Guildford Road and Colstoun Road saying basically there is no funding for such a request at this time, but the situation will be monitored.

Regrettably any upgrade to Ashfield Station and the access bridge seems to be well into the future. Even to make the bridge compliant for those with disabilities as detailed in the Disability standards for Accessible public Transport does not have to be achieved until 2022. An upgrade will only occur when funding becomes available.

In regards to the PSP (Principal shared Path) and access for cyclists into the suburb this is also seen to be beyond budgetary requirements and considered not necessary at this time.

This is unfortunate for the residents of Ashfield as there is no safe and easy access into this suburb across the busy Guildford Road.

*Transport Services have always been an issue in Ashfield see extract from The West Australian, Thursday 11th March 1954*



## The National Garage Sale Trail is coming to Ashfield!

The National Garage Sale Trail is a community-led initiative to hold garage sales on the same day across the Australia.

This year, the AshfieldCAN will be hosting an event at the Gary Blanch Reserve, Pearson St, Ashfield, from 9am – 3pm on Saturday 26 October.

Why participate in the National Garage Sale Trail? The Trail provides you with an opportunity to make some cash from your unwanted goods, as well as supporting our local AshfieldCAN community. All funds raised from the sellers registrations will go towards providing much needed seating in the Gary Blanch Reserve

How can you get involved? You can participate as a seller by registering your sale at [www.ashfieldcan.info](http://www.ashfieldcan.info). Cost to the sellers for a carboot sale is \$10, payable on the day.

Buyers participate for nothing – just enjoy the opportunity to pick up some fantastic bargains on the day! Buyers are encouraged from 9am.

+- Come along on the day to meet your neighbours, browse the wares, enjoy a coffee from the coffee van, buy a homemade cake, and feed your hunger pains with a sausage sizzle!

For more information about National Garage Sale Trail, visit <http://www.garagesaletrail.com.au>. To register as a seller, or to find out more about the Ashfield event, visit the AshfieldCAN on [www.ashfieldcan.info](http://www.ashfieldcan.info)

## My Recollections of Ashfield

By Mike Smith

a platform either side of the line for going to Midland or to Perth. You had to travel in the middle carriages as the platforms were very short and the trains would stop with only the middle carriages facing the platform. Many times I witnessed people having to clamber down from either front or rear carriages with the guard (yes they had them then) sometimes helping mums with prams and kids. When the station first opened there wasn't a crosswalk painted on Guildford Rd. After a couple of passengers were knocked over by cars the crosswalk was installed but there were still several accidents. I remember one of the van Amstel girls being run over and hospitalized for a long time.

The grassed area now opposite the railway station was originally a big swamp with a large open drain running from the swamp under Coulston Rd and along the back of the houses facing Guildford Rd all the way to Pearson St. In later years the swamp was excavated and turned into a huge garbage tip for many years. My friends and I would turn discarded kapok mattresses into rafts and paddle around the tip. In winter the swamp would flood and in summer it would be dry and hard and we'd all ride our bikes on the dirt tracks we created. We often played in this drain much to the annoyance of our parents. The sides of the drain would flower profusely with Jonquils every year and we'd pick them for our mothers.

The Western side of Maidos street was vacant land and the area nearest French St flooded every winter. Groups of boys would gather at the high point of French St and pedal their bikes like mad to see who could get the furthest into the water. There was a large gum tree on the corner of French St and Maidos St and we had a rope swing for all to use. If you climbed to the top you could see over the rail line to Ludlow's scrapyard and beyond. We found out years later that Vickers and the other industrial buildings on the other side of the railway would flush their fluid wastes into this drain which flowed into another drain along Pearson St and on into the river.

For many years the only shop in Ashfield was on the corner of Guildford Rd and Coulston St. I remember it having a hand operated kerosene pump with a large glass tank on the top. The owner would pump the handle to and fro until the required amount (usually a gallon) showed on the side of the glass. The kerosene was usually used to help start the wood fire or to clean tools, dirty bikes or bike parts. Things were different then – my father would send me down to the shop to get his tobacco for him as he used to roll his own cigarettes. All my friends would be doing the same for their fathers.

Subsequently another shop was built facing Coulston Rd near Maidos St but set back from the road – this was used as a butchers shop. I remember getting free bones for our dog. Later another shop was built next to the butchers and this was Walmsley's cake shop. My friends and I would collect empty soft drink bottles and take them to the corner shop to get the refunds to spend in the cake shop – a win-win situation for all.

I can remember the Catholic church being erected on top of the hill on the east side of Haig St. This was a timber framed fibro coated building which was trucked in from somewhere else. Mrs Brennan, who lived next door, was the caretaker of the building.

The Ashfield Hall was a timber framed and corrugated iron clad building located on the cnr of Haig St and Coulston Rd. On some summer nights someone would organize a picture show (now called the movies). I remember seeing an Elvis movie there. I think the oldies used to have dances there as well. The playground equipment was installed after we moved to the area. We loved it but the mums didn't as we'd come home dirty from the black sand.

After the tip was filled in and grassed the Council installed Aussie Rules goalposts which we thought were fantastic – there was always someone there kicking a footy around all year round. They watered the grassed areas with large dome shaped sprinkler heads on long aluminium pipes. We all enjoyed running or riding our bikes in and out of the sprinklers.

The establishment of the grassed areas also resulted in the arrival of some Circuses. My friends and I would get free tickets for helping erecting the canvas tents. Another win-win situation.



**ASHFIELD  
COMMUNITY  
CHEMIST**

**New chemist in Ashfield  
(next to Ashfield IGA)**

**Open: Mon - Sat 8am - 7pm**

**1B Colstoun Rd, Ashfield  
Western Australia 6054**

**(08) 6161 9958**

**[ashfieldchemist@optusnet.com.au](mailto:ashfieldchemist@optusnet.com.au)**


*Call in and meet friendly owners  
Tracey and Ben Tran*

*PhotoBooksWA*

**Birthdays, Holidays, Weddings,  
Christenings, Family Gatherings,  
and Precious Childhood  
Moments**

**Photo books are the best way to  
display your Special Memories**

Visit us online  
and download our  
**FREE**  
photobook  
software



**WWW.PHOTOBOOKSWA.COM.AU**



# Living in Ashfield

*We seek the memories of long time Ashfield residents and invite contributions to be submitted to us at PO Box 337 Bassendean 6934*

*Memories from former Ashfield resident Mike Smith*

I was born in 1948. I can't remember if it was 1952 or 1953 but I do remember the day that my parents brought my sister and I to visit our new house in French Street. We had been living in Kensington St in East Perth. On that day I can only remember that our new house had bare jarrah wooden floor boards and a huge back and front yard covered in black sand with a concrete path from the front gate to the front steps of the verandah.

The house was a pretty standard SHC design with 2 bedrooms and a front and back verandah. There was a chip heater in the bathroom for hot baths but showers were always cold water until many years later. We had a twin concrete trough in the laundry with a wood fired copper for Monday washdays. A wood fired fireplace in the lounge-room provided heating in winter and a Metters wood-fired stove provided cooking all year round even on Xmas Day when it was usually very hot. I remember my mother telling us years later that not only was she happy to have a place



of her own but how wonderful it was that both the laundry and toilet were under the main roof – no more outside dunnies or wash-houses for her. I discovered years later that we were on the deep sewerage system which ended in our backyard when both ours and next doors back-yards were excavated to extend the sewerage line further down the street when the new houses were built along the French St extension.

Our house was timber framed with fibro cladding – hot in summer and cold in winter. The black sand wasn't any good being both infertile and acidic. We had a chook shed in the backyard and one of my jobs was to shovel out the chook poop and spread it on the gardens and then water it in. Over the years my parents planted 2 lemon trees, 2 grape vines, an almond tree and a fig tree in the back yard. We also had 2 passion-fruit vines growing over a trellis on each side of the house. My mother and her friends would make their own jams and swap with each other. I remember being sent off with the kids next door to collect 'paddy-melons' from the bush areas at the river end of French Street. These were used in the home-made marmalade jams and pickles.

The bitumen in French St originally ended at Dorothy St and a sawdust track ran from Dorothy St to Hardy Rd. In the early days the only public transport was the 55 bus which ran from Bassendean thru Ashfield on the way to Perth. Luckily for us the bus ran down Margaret St and French St and the nearest stop was only about 100 metres away from our place. I started school at St Michaels at the Bassendean convent and caught the 55 bus on school days.

After the railway station was built in 1954 or 1955 I often caught the train to primary school. I always caught the train to high school in Midland. The station had 2 platforms with

Dave

KELLY

Representing Ashfield in State Parliament

e dave.kelly@mp.wa.gov.au

p 9279 9871

w www.davekellymp.com

Ashfield is part of the State Electorate of Bassendean

## SPONSORS WANTED

AshfieldCAN is pleased with the response to its newsletters and now offers business people in the Ashfield area a unique chance to offer their services to the public. We thank Ashfield IGA, Ashfield Community Chemist, Dave Kelly and Success Print for sponsoring your newsletter and ask that you consider them when purchasing products to help keep services in Ashfield. Business owners can sponsor AshfieldCAN the newsletter by emailing [info@ashfieldcan.info](mailto:info@ashfieldcan.info) or phoning Dave on 9279 7903.

## Local Government Reform

On Tuesday 30 July 2013, the State Government announced the proposed Local Government Reform process. It was announced that the Town of Bassendean is proposed to be merged with the City of Bayswater, including part of the City of Stirling and a small part of the City of Swan. Council now has until 4 October 2013 to prepare a submission to the Local Government Advisory Board.

There is an opportunity on the Town's website to have your say about these reforms.

This is our chance to offer an opinion.

<http://www.bassendean.wa.gov.au/>

HAVE YOUR SAY!

## Cat Catchers Coming

As of November 1 all cats aged over 6 months must be micro-chipped, sterilised and registered with your local council, ie Bassendean.

Cats will also be required to wear a collar and registration tag to ensure they are easily identifiable and can be returned to owners if lost. the Bassendean rangers can be contacted on 9377 7480

## Revegetation Works

Reeds have been planted on the Ashfield foreshore as part of the revegetation adjacent to the dual purpose path on the Ashfield Flats.

## Website Makeover

Make sure you check out our new improved website for all the latest news on upcoming events and current projects.

[www.ashfieldcan.info](http://www.ashfieldcan.info)

# Town of Bassendean Planning Strategy

**There will be a community consultation meeting for the Town of Bassendean Local Planning Strategy on September 23rd at the Ashfield Sports Club. This will be from 4pm-8pm.**

This will allow for community members to have their say about the local planning strategy and how it affects their local community.

These Public Information Sessions are informal in nature and will give residents and property owners the opportunity to discuss the Strategy and associated implications in a one on one setting. The Public Information Sessions are not Public Meetings and formal appointments are not required.

**While many aspects of the Ashfield Precinct plan are unlikely to eventuate, the re-zoning of land in Ashfield is likely to occur as laid out in the Local Planning strategy.**

**Below is a brief outline of the Strategy and how it relates to Ashfield.**

### Specific Strategies

The population objectives are promoted through specific strategies namely:

- Accommodate more housing and population;
- Focus on infill development;
- Targeted approach to increased density;
- Focus on transport routes; and
- Consolidate Activity Centres.

### Vision for Residential Areas

Consistent with the key theme of Directions 2031, the vision for Bassendean when considering the future of its residential areas is to achieve:

- A liveable town that is safe, comfortable, and enjoyable;

- A prosperous town that builds on its current prosperity;
- An accessible town where all people meet their needs reasonably close to home;
- Sustainable growth within the constraints of the environment; and
- Responsible and efficient management of urban growth and infrastructure.

In regards to Ashfield specifically these points have been outlined.

### Ashfield Housing Precinct

Ashfield Housing Precinct area occurs between the Ashfield railway station T.O.D area and the River Precinct. There is evidence of urban decline in parts and the area is suited to incremental redevelopment for a variety of medium density housing types. The State Government Ashfield Precinct Plan initiative could be contemplated, however, unless all elements of this Plan are given commitment, it is important to maintain a difference between land that is within the 800m walkable catchment of the Ashfield Railway Station and the land beyond this walkable catchment.

### New commercial objectives

- To recognize the prospect for a potential complementary district centre at Ashfield in accordance with the Ashfield Precinct Plan, where the time frame and focus of commercial development does not compete with Bassendean as a District Centre.
- To promote the improvement of amenity and services of Local shops at an appropriate scale and facilitate integration with medium density housing development where suitable.

### Additional strategies

- Defer the more ambitious main street option for Ashfield (Ashfield as per the Ashfield Precinct Plan) until decisions are made about the train station relocation, or until the State Government becomes more active in the implementation of the Ashfield Precinct Plan.



# Dogs “Off Lead”

At the last AshfieldCAN meeting on the 19th August concern was raised that the provision for dogs to have an ‘off the lead’ exercise area was going to be lost on Ashfield Flats due to changes in the management of the land. The land which is known as Ashfield Flats is primarily owned by the West Australian Planning Commission and had been managed under a lease arrangement by the Town of Bassendean. As the lease had lapsed, it was likely that the provision for an ‘off the lead’ exercise area was going to be lost.

The AshfieldCAN and concerned residents lobbied both the West Australian Planning Commission and the Town Of Bassendean Council asking for this amenity to remain.

We are delighted that the outcome of this action is that a new lease arrangement is being drawn up between the WAPC and the Council allowing for local residents to continue exercising their dogs ‘off lead’ in this area.

Many members strongly believe that the area is well used and valued by dog owners as a place to allow dogs off the lead. ‘There is a great community of dog walkers around this area that help look after the land by collecting rubbish and caring for the area. This amenity is important for building community so should be valued as a resource.’ says Lucy Bromell (Local resident and AshfieldCAN secretary).



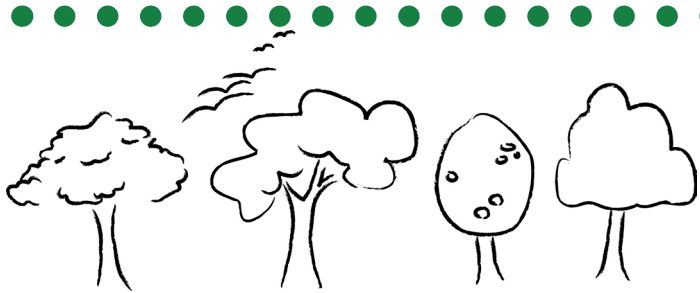
## The Dog’s Breakfast will be held on 13th October at 9am.

This year we will be having a demonstration of ‘Rally O” by the Perth agility and Obedience Dog club.

We will also have Personalised Pets back again creating personalised pet collars and leads.

Other groups involved this year are Paws for Diabetics, Rescue pets and Desperate for Love pet Dog rescue

The SES will be cooking breakfast for a gold coin donation. There will be walk trails, competitions and raffles. Look forward to seeing you there!



## Ashfield Forest

Since our last newsletter AshfieldCAN has continued working on our ideas for an Ashfield Forest and held a successful meeting with representatives from the Town of Bassendean, where we discussed our proposal.

**The Ashfield Forest Project aims to:**

- Provide Ashfield with all the well documented benefits that trees provide in an urban area.
- Support the implementation of the Town of Bassendean’s Street Tree Master Plan.

**AshfieldCAN members Nick Tatnall and Teresa Welch applied to the Town of Bassendean for a street tree and have had one planted on their verge recently.**



- Turn Ashfield’s verges into beautiful gardens of local native plants.
- Promote a shared sense of ownership and pride in our suburb.

Our current focus is encouraging residents to take advantage of the opportunity to apply to the Town of Bassendean for a street tree to be planted on their verge. **All residents can apply for a tree**; homeowners and private or public tenants. While this year’s planting season is over now is a great time to apply for a tree to be planted during the next planting season during Autumn/Winter next year. Applying now allows the Town of Bassendean sufficient time to plan for planting and order trees. **Applying for a tree is easy.**

Step 1: Phone the Parks and Gardens Supervisor on 9377 9000 OR send a letter outlining your request to:

Parks and Gardens Supervisor  
Town of Bassendean  
PO Box 87  
Bassendean WA 6934

A generic letter that you can add your details to is available on the AshfieldCAN website [www.ashfieldcan.info](http://www.ashfieldcan.info).

Step 2: Let AshfieldCAN know that you have made your request as we would like to create a register so we can follow these up on your behalf. Email Emma at [emmaslavin@bigpond.com](mailto:emmaslavin@bigpond.com) or send a copy of your letter to AshfieldCAN c/o 289 Guildford Rd, Maylands WA 6051.

We are also working on plans for a garden to be built on the corner of Colstoun Rd and Haig St just outside Ashfield Sports Club. This garden will beautify the Colstoun Rd streetscape and demonstrate how local native plants can be used to create a beautiful water wise garden on a verge.

For further information or to get involved in the Ashfield Forest Project contact Emma on [emmaslavin@bigpond.com](mailto:emmaslavin@bigpond.com)



## Join AshfieldCAN

If you would like to become a member of Ashfield Community Action Network (AshfieldCAN) email us at [info@ashfieldcan.info](mailto:info@ashfieldcan.info) or post this form to 289 Guildford Rd, Maylands WA 6051

Name .....

Address.....

Email.....

Date.....

Signed .....

## Gary Blanch Reserve Success

Our everlastings planted at the Family Fun Day are blooming beautifully and there is lots of great news to report on the Gary Blanch Reserve redevelopment.

The following redevelopment proposal has now been presented to the Town of Bassendean who are very enthusiastic about the project.

*We envision a beautiful sustainable local park. A place that welcomes everyone, with a range of alternative zones, where different types of activities can occur. A place that fosters positive social connections and provides opportunities to enjoy nature. A place we can be proud of.*

*The following elements of the redevelopment have been identified through a number of community events, workshops and meetings. These elements do not all need to occur in a particular order and ideas can be developed and funding opportunities identified along the way. The development of these elements provides opportunities for community input and engagement in the future.*

**THE GROUND, THE SEATS, THE PATHWAY, THE GARDENS, THE STORY, THE PLAYZONES, THE CENTREPIECE**

More information on the redevelopment proposal can be found on our website [www.ashfieldcan.info](http://www.ashfieldcan.info)

## Generous Rotary Donation

The AshfieldCAN is delighted that the Rotary Club of the Swan Valley has decided to make a significant donation of \$10,000 towards the improvement of Gary Blanch Reserve.

The members of the Gary Blanch Reserve subcommittee have met to discuss which of the redevelopment elements would be the best use of this donation and we will be meeting with Rotary Club members soon to discuss ideas with them and to confirm the funding.

We are very grateful to Swan Valley Rotary for their kind support and their commitment to the people of Ashfield.

## Town of Bassendean Works to Proceed

The Town of Bassendean has also committed significant funds for work in the park which will go towards providing a well needed new “floor” by replacing some sections of lawn and mulching the rest of the reserve. The surface of the park was identified as major issue in all our community consultation about the park and it is great to see this being resolved by the Town. This will then provide a wonderful foundation for all future elements of our redevelopment proposal.

The next major event taking place will be the **Garage Sale Trail on October 26th**, for more information see the other article in this newsletter. We look forward to seeing you then. For more information about the Gary Blanche Reserve Project contact Emma at [emmaslavin@bigpond.com](mailto:emmaslavin@bigpond.com).