

BASSENDEAN SEED LIBRARY

A collaboration by The Town of Bassendean Memorial Library and ArtsHouse Community Garden @ Cyril Jackson Senior Campus
Are you interested in gardening in your local community, growing fresh veges & herbs, saving seeds, sharing experience and skills? Join our new free seed library!
For more info contact: artshousecommunitygarden@gmail.com



Neighbourhood Watch Notes from Verna Suburb Manager Ashfield Ph: 0432 563 800

Usually at this time of year our thoughts are turning to the festive season with parties, present buying, and catching up with friends and families...rarely is much thought given to the activities of criminals.

Criminals however are always on the lookout for easy pickings. When out shopping ensure that your wallets and handbags are not easy pickings lying in a trolley, while you are distracted. Keep a firm grip on them instead.

If you are partying inside your home or out the back ensure that your car doors are locked if the vehicle is parked on the lawn or in the driveway. Ensure the front door is also secured. Vigilance and a few basic safety rules will go a long way to ensuring a safe and happy festive season.

YOGA IN ASHFIELD

This is the perfect way to start your day. Kicking off bright and early at 7:30am on Saturday, Hatha yoga class runs for one hour in the beautiful Gary Blanch Park. With a gentle flow and variations to challenge yourself, this class is suitable for all levels. Please bring along yoga mat, sunglasses and bottle of water. Class fee: \$13. Please call Rachel at 0466 835 605 or email rachellau@vaiyoga.com.au for more details.



NOVEMBER 2018

Helping to build a better community

ISSN 1839-3071

Vol 8 No 3

Ashfield
www.ashfieldcan.info

AshfieldCAN Community Christmas Party

**Wednesday
5th December
5pm
Gary Blanch Reserve**

**Free BBQ &
Soft Drinks.**

**Please bring a
salad or nibbles to
share. BYO chair.**

**RSVP for catering
info@ashfieldcan.info**

All Welcome



Dave KELLY



Representing
Ashfield in
State Parliament

e dave.kelly@mp.wa.gov.au
p 9279 9871
w www.davekellymp.com

Ashfield is part of the State Electorate of Bassendean



Dave Kelly Notes

Well done to AshfieldCAN for their community work in 2018. Thank you to Lucy Bromell who has stepped down as an AshfieldCAN office-bearer after 10 years in various roles. Lucy has worked tirelessly to progress many great projects, the latest being the plan to build a "Lookout" over the Ashfield Flats. I understand concept plans will soon be submitted to the Town of Bassendean's River Parks Committee. I was happy to secure \$30,000 from the McGowan Government towards funding this project.

I would also like to congratulate and welcome incoming AshfieldCAN President Simon Perree. I am looking forward to working with you in the New Year.

I am particularly proud of the McGowan Government's investment in Ashfield Primary School during 2018. The school is one of 200 in WA to have a dedicated science lab as part of the Government's plan to promote STEM education. The school has also received a further \$25,000 to purchase equipment. This is on top of \$125,000 to fully enclose the undercover area and \$10,000 towards a nature playground for students.

Have a good time over the summer holiday season. See you in the New Year.

Best Wishes Dave Kelly

AshfieldCAN Committee
President- Simon Perree
Vice President - Bob Brown
Treasurer - Mark Johnston
Secretary - Lenny McLeod

For contributions to this newsletter call 0428 244 480



Introducing our new President Simon Perree

I grew up and studied undergraduate and postgraduate degrees in Perth, I have worked the last 10 years in the civil construction industry. After living abroad, and up in the Kimberley for several years with my partner, we moved to Ashfield in 2014. We love the friendly community and the tranquil beauty of the Ashfield flats, after work I like nothing better than to spend time walking my dog along the river. I look forward to gaining an understanding of the issues which are important to the community; and to advocate on these issues to help continue to improve this great community. My sincere thanks to the AshfieldCAN for giving me this opportunity and I would like to thank Lucy & Emma for all their hard work over many years I hope to continue the great work you have done with AshfieldCAN.

AshfieldCAN President Simon Perree



Award Winning Plumbers

Master Plumbers and Gas Fitters
Association of WA
2008 Plumbers Licensing Board
Plumbing Business of the Year

289 Guildford Rd, Maylands WA 6051
Ph: (08) 9271 4021 Fax (08) 9370 4750
water@prideplumbing.com.au
www.prideplumbing.com.au

ADVANCE PRESS

Your local print and communications provider.

We are a leading Western Australian-owned print and communications provider, offering a unique service to a diverse range of customers.

Some of our products and services include:

- Offset printing
- Digital printing
- Personalised service
- Desktop publishing
- Graphic design
- Large format posters and banners
- Online print ordering
- Print management
- Point of sale products

186 Railway Parade
Bassendean WA 6054
Tel 08 9376 4000
Web advancepress.com.au



Exciting New Chapter For Our Town

Council is delighted to have recently welcomed Ms Peta Mabbs to the position of Chief Executive Officer for the Town of Bassendean. Peta's appointment followed the departure of Mr Bob Jarvis in October, after having performed this role for almost a decade.

The CEO is responsible for managing the Town's organisational structure and its day to day operations. This person is also responsible for implementing the decisions of Council and delivering the vision of the Council and the Community. Therefore selection of the CEO is probably the most important decision that a Council will make.

Over the past months Council undertook a lengthy recruitment process in order to find a progressive CEO who would assist us in achieving the community's aspirations for our Town.

Peta has an impressive resume as an experienced transformational leader and Chief Executive Officer. She has post graduate qualifications in Public Sector Management, Policy & Public Administration. She is also an Executive Fellow of the Australian and New Zealand School of Government and has previously been honoured with the title of 'Female Administrator of the Year'.

Peta has had a 34-year career working within the State Government across agencies responsible for justice, policing, child protection, corruption and integrity, land information, housing and communities – all of which have critical links to the community. She has a strong corporate governance and integrity background, and until her appointment with the Town had been playing a key role in the independent inquiry into the City of Perth. Significantly, Peta also has a very personal connection to the area having grown up in the Town including the suburb of Ashfield. It's clear that she has a deep love of the local community that comes from her long history with the area.

We look forward to the exciting new chapter that Peta's appointment brings for Ashfield, Bassendean & Eden Hill and working with her to further realise the potential of our Town.

Renée McLennan - Mayor

crmclennan@bassendean.wa.gov.au

AshfieldCAN thanks all our sponsors from throughout the year.

Ashfield Primary

and Bryce Cotton suited up with Damian and Nick to take on the Ashfield Primary School students. The excitement was enormous and the whole school watched on, cheering all players. The once in a life time experience for these students is something they will be able to cherish for ever. But the program doesn't stop there - the students continue to set personal goals for the remainder of the year to improved attendance, behaviour and their academic results. Every five weeks the students are then rewarded with another visit from Damian and Nick and presented with a reward for achieving their goals, with the final reward being a ticket to attend a Perth Wildcats game. The program has been a huge success for all students showing improved attendance, behaviour and academic gains.

NAIDOC

Ashfield Primary School celebrated NAIDOC week, an event that we at Ashfield continue to celebrate. NAIDOC week is an opportunity to celebrate Aboriginal and Torres Strait Islander people, history and culture. This year we celebrated with the theme "Because of her, we can" which acknowledges the role that women have in our communities and as leaders in our families.

For NAIDOC this year the whole school participated in a round robin day of activities where the students were put into groups of mixed ages and rotated through the school for 40 minute sessions. The sessions included, learning about ground ovens, traditional Noongar games, sand art and researching symbols in art, Yirra Yaakin Culture 2.0 workshop, relaxing Aboriginal art experience and a role model pop quiz. The students and staff thoroughly enjoyed the day and the activities. We would like to thank Miss King our AIEO for organising such a wonderful experience.

River Parks Committee

Congratulations to everyone who played a part in developing the vision for and designing the AshfieldCAN Lookout plan. It's an outstanding proposal that will allow our community to enjoy and appreciate the Ashfield Flats from a beautiful and unique vantage point. The River Parks Committee have recommended that Council endorse the AshfieldCAN Plan and requested that WA Planning Commission prepare a Site Management Plan and an estimate of maintenance costs so that Council can consider taking over management of the site.

Thank you to all of those in the community who provided feedback on the Ashfield Flats Draft Works Program 2018-2023. Your input has informed positive recommendations from the WAPC and the River Parks Committee to rehabilitate the land and foreshore in a way that will allow our community to continue to enjoy the area and enhance and protect the environment.

Key elements of the recommendations include, waiting until hydrological studies are complete (around 2 years) to consider the path realignment

Sporting Events

We continued our strong sporting culture participating in a number of competitions and events across Term Three. Selected Ashfield Primary school students competed in the Interschool Cross Country Carnival at the beginning of term finishing fourth place overall. We held our traditional faction athletics carnival which was won by Broun Faction for the fifth year in a row. Top performing students from this carnival were then selected to compete in the Interschool Athletics carnival. This year we hosted the carnival and it was great to see fantastic sportsmanship shown by all our students throughout the day. We were very proud of all our students who competed in the carnival, finishing second overall on the day. During the term we also continued to hold our lunchtime faction competitions with basketball being the sport of choice for Term Three.

After School Sports Program

We continued to offer our after school sporting programs to the students. Students had the opportunity to participate in a four week after school netball program and were excited to have a visit from the West Coast Fever player, Verity Charles. We also offered a four week after school soccer program which was run by members of the Perth Glory. A number of students look part in both of these after school events and learnt new skills and had a fantastic time.

Other Term Three Events

Science Lab: Our new Science Lab was completed early Term Three. This is a wonderful addition to our school and provides exciting experiences for our students.

Open Night: We held our annual Parent Open Night which was an extremely successful event with a large turn out of parents and family. The night provided opportunities for students to 'show off' to their parents, all the

wonderful things they have been learning about in their classroom.

The students then took their parents to the undercover area where they were able to show their parents a large range of Indonesian and Art work which was on display. The parents and students then participated in a number of activities and enjoyed dinner with the family whilst listening to some live music from two of our local musicians.

Book Week: Book Week at Ashfield Primary School is also an exciting week. This year we continued to have our annual Book Week Dress Up Parade, where the students (and teachers) came dressed as their favourite book character. The library was turned into a pirate's paradise where students had the opportunity to participate in many Book Week competitions and activities, including a scavenger hunt. To conclude Book Week we held our annual school Spelling Bee. All our students participated in this event, in front of many nervous parents. The event was again, a huge success, with winners rewarded from each year level. The competition was fierce with all students spelling some very tricky words.

Australian Girls' Choir Workshop: Girls from ages 5 to 12 had the opportunity to participate in a workshop with the teachers from the Australian Girls' Choir. The girls participated in a number of singing activities and exercises throughout the workshop, with some lucky girls being selected to continue their participation in the Australian Girls Choir beyond the workshop.

Good Standing Reward: We celebrated the end of term with our Good Standing Reward. Students who had their good standing were able to participate in the fun day which included the Gym Bus and an inflatable obstacle course. Our good standing procedures continue to improve attendance and behaviour across the school.



2018 Spelling Bee (above)
Alex & Ella showing work to their Mum (below)



and foreshore fencing. The WAPC recognises that it is important for the community to walk alongside and have access to the river and will incorporate this into the final plan. Initiatives will also include liaising with the Department of Transport to install a speed camera for boats and seeking advice on how boats can navigate around the bend to minimise wake and erosion.

The Committee also supported the Town working with dog walkers and the wider community, Planning Commission and the Department of Biodiversity Conservation to develop a policy and signage around dog access within the Flats. This will help us better protect the Threatened Sampire Plant Community, wetland and foreshore areas whilst being able to enjoy the space and connect with each other. You can help us to do this by not allowing dogs to enter the wetland or fenced areas and accessing the river where there is a beach.

If you'd like further information please feel free to get in touch, you can find more information in the Agenda and Minutes of the November River Parks Meeting. Best wishes.

Cr. Melissa Mykytiuk
Chair, River Parks Committee

Providing Amazing Opportunities for Every Student at

Ashfield Primary School was the place to be during a very busy Term Three. We pride ourselves on providing many valuable experiences and opportunities for our students to celebrate success. Combined with the day to day classroom learning, these experiences were plentiful during Term 3.

Young ICT Explorers

Throughout Term 3, four young scientists embarked on a mission to make Ashfield Primary School more water-wise. Curtis, Dylan, Levi and Moana commenced their adventure by researching the plants in the school's new front garden. They gathered information about the water levels that each plant species required and armed with this new knowledge, they set off to make a difference in the world around them. These young scientists worked with one of our volunteers, Alan, a brilliant engineer, to design, build and calibrate a Moisture Metre. The aim of this metre is to measure the amount of electric current that flows through soil. If there is a large amount of electric current, it means the soil is wet. On the other hand, if the plant's soil only allows some current to flow through, the soil is quite dry. This information can then be used by gardeners all around the world to test their plants' soil moisture levels in order to decide whether the plant needs water or not. To make the metre more user-friendly, The Plant and Evaporation Operation team worked towards designing a website on Weebly. The website was built in such a way that gardeners can select the plant species they have in their garden and the website then shows the amount of water that specific plants need, as well as the correct moisture metre measurement. Some plants like cacti

grow best when their soil is in the red zone (very little water), whereas an olive tree grows fruit best when it is in the green zone (plenty of water). On Saturday the 15th of September, the four scientists travelled all the way to ECU Mount Lawley with two staff members Miss van der Linde and Ms Hennah, to present their project and compete against other students from other primary schools. They were excited and nervous for this new experience, but when the time came for the judges to look at their project, they showed great confidence and loved every minute of the presentation. As the day went on, Moana, Levi, Dylan and Curtis shared their ideas with people of all ages and it was evident that the level of confidence in all of them grew by the minute. The day came to an end with the winners being announced in front of a large audience. It was with hard work, positive attitudes and smiling faces that The Plant and Evaporation Operation team received third place overall in the Year 3/4 category, which fielded 15 primary schools, with a combined 144 students. Ashfield Primary School is extremely proud of these four students for working tirelessly, showing they can bounce back when things did not go as planned and for representing our school with such a fantastic professional attitude.

STEAM DAY

To celebrate National Science Week, Ashfield Primary School recently held a STEAM Day across the school. STEAM is an educational approach to learning that uses Science, Technology, Engineering, the Arts and Mathematics as access points for guiding student inquiry, dialogue, and critical thinking. The end results are students who take thoughtful risks, engage in experiential learning, persist in problem-solving, embrace

collaboration, and work through the creative process. Our theme for our STEAM Day was Mosquitoes. Students moved throughout the classrooms for most of the day, engaging with interactive learning activities in a collaborative and enjoyable learning environment. For our Science class students explored mosquito lifecycles. In the Technology rotation group, students used iPads and QR Codes to discover the dangers of mosquitoes, and in Engineering we built our own mosquito traps. During Art we drew and labelled mosquitoes and in our Mathematics class students became entomologists, collecting images of a variety of mosquitoes to tally and graph their populations throughout the year. All the students were very engaged throughout the day and were reciting mosquito facts for the rest of the week.

Perth Wildcats Inspire Program

We also continued our partnership with the Perth Wildcats and for the second year in a row we were able to link in with the Perth Wildcats and participate in their Inspire Program. The Wildcats Inspire program is focused on encouraging students to attend school and strive to be the best they can be in their academics. The year four to six students were lucky enough to have the Perth Wildcats captain Damian Martin and new recruit Nick Kay, both returning from the Commonwealth Games where they won the gold medal with the Boomers visit their classrooms twice a week for four weeks. Both Damian and Nick worked with the students in class on assisting with their learning and demonstrated balance between sport and everyday life. At the conclusion of the visits, the selected students participated in a basketball game against the Perth Wildcats. Angus Brandt

Annual Dogs' Breakfast a Great Success

The Dogs Breakfast was held on a beautiful sunny Sunday morning and was again a lot of fun this year.

It was great to see so many dogs and people down enjoying the morning.

Congratulations to all our winners of our competitions. It is always a lot of fun seeing the Dog that looks like it's owner competitors! Chris Gazey and Roxy were worthy winners this year.

Thank you to the SES for cooking us all a delicious breakfast and to all our sponsors for supporting us. Thank you also to all our wonderful volunteers that helped on the day.

President's Report 2018

The last year of the AshfieldCAN has flown by at lightning speed and I cannot believe we are already at the end of 2018. It is hard to work out where the time has gone. WE have had another successful year with the AshfieldCAN.

We are still committed to the Lookout Project and have now completed the Community Consultation and the concept plan is now going to the River Parks Committee.

We started our events this year with the Noel Nannup Story Telling which was a wonderful event and one that I would love to see done again.

We managed to make improvements in Gary Blanch reserve by getting power to the cube and buying a little more equipment which makes having events in the Park even easier.

Last years Christmas Party was a fantastic success helped by the said power and it was fabulous to see so many people enjoying the park and each other's company.

During this year we had our Family Fun Day at Gary Blanch Reserve, we had our Future Visions forum about Ashfield Reserve. We have done the community Consultation for the lookout project, had a bird walk and a frog stalk and had the ninth Dog's Breakfast. All of which were very successful. Thank you to all the volunteers who helped out on these events.

As well as the events we have kept the community informed with our newsletter – this is very much thanks to Dave and Emma for putting it together each time.

We have again added a lot to the fabric of the Ashfield Community.

I would like to thank my Vice President Emma Slavin, Treasurer Mark Johnson and long suffering Secretary Lenny McLeod for all the support you have given me over the year. It has been very much appreciated. I would like to thank all our members and our community for supporting the AshfieldCAN.

As we have come to the end of this AshfieldCAN year it is time for me to step down and as I look back over the last 10 years it has been a pleasure to see all that we have managed to achieve in the community. I have made some great friends and have been involved in lots of great events.

As I was looking through my AshfieldCAN folder on my computer today I realised over the last almost 10 years I have generated some 214 subfolders containing 5286 files all to do with the AshfieldCAN and improving the community of Ashfield. Everything from posters for events to letters to politicians to planning strategies.

I wish Simon Perree, the new president and his executive team every best wish for the future and look forward to still being involved in a more minor capacity.

Lucy Bromell



Dave Kelly presenting the prize for the dog that looks most like it's owner to Chris Gazy and Roxy. Thanks again to all our Sponsors

Local Handyman Services

Gardening
Lawn Mowing
Reticulation
Household Repairs
Gutter Cleaning
Rubbish Removal

For a Free Quote, contact Des
0422 914 521

des@ashfieldgm.com.au

All Jobs Considered



ASHFIELD
Gardening & Maintenance
Qualified Tradesperson . National Police Clearance . White Card . Fully Insured



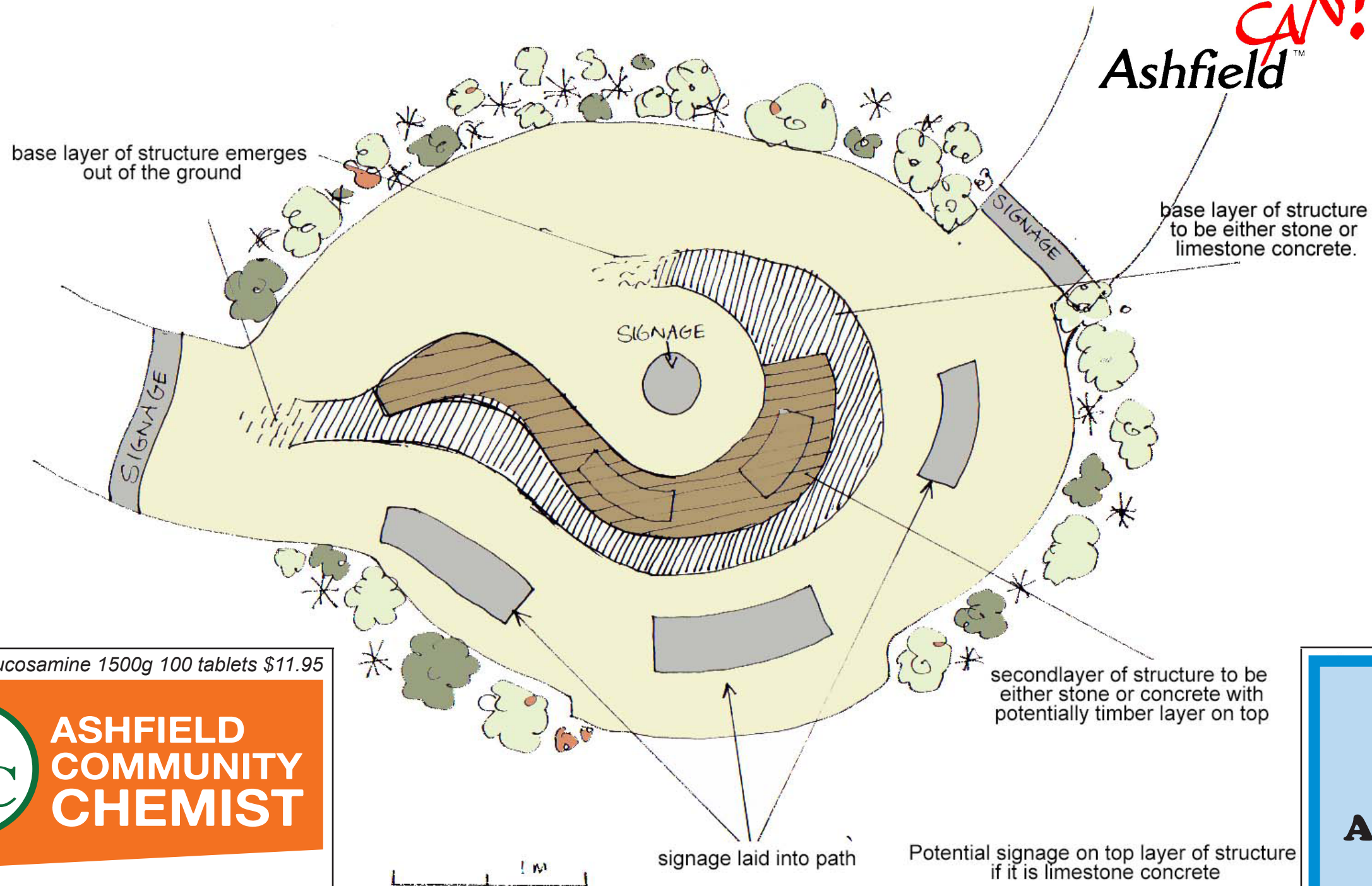
*ICT Young Explorers Competition (above)
Ashfield vs Wildcats Basketball Game (below)*



Christmas Party
5th December, 5pm



The Lookout. Central Feature



We have now presented our plans to the Town of Bassendean and the WAPC.

Pictured is our plan for the Lookout Feature, to see a copy of the Final Site Concept Plan please request one via email info@ashfieldcan.info

It is a plan that can be done in stages and none of it is overly complicated.

It is a plan that offers a vision for a passive local park.

It is a plan for a park that is designed essentially for local community to walk to.

It is designed as a dry park, but this can of course be changed.

It has been designed with bush fire risk considerations.

It has been designed to encourage a quiet and contemplative use of the space.

It has been designed to maintain all the view for local adjoining residents.

It has been designed to create a planted buffer between residences and the active areas of the park.

It has been designed to find a solution to just having a space in our community that is nothing more than a contaminated site.

It has been designed with passive play elements in the space to make the space interesting e.g. the human sundial, stepping logs and stones, seating and path ways.

It has been designed to include signage and interpretative information.

It has been designed to celebrate the Ashfield Flats.

It has been designed by and for the community.

Faulding Glucosamine 1500g 100 tablets \$11.95



Your chemist in Ashfield

Open: Mon - Sat 8am - 7pm

**1B Colstoun Rd, Ashfield
Western Australia 6054**

(08) 6161 9958

ashfieldchemist@optusnet.com.au

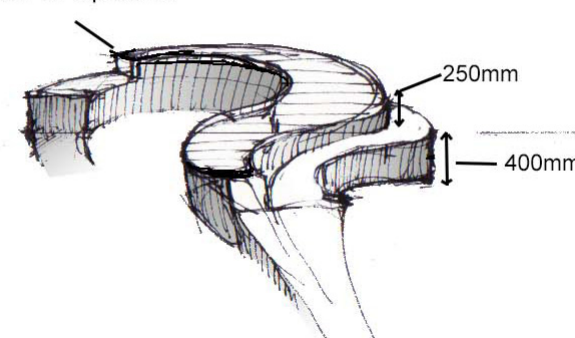
AshfieldCAN has now completed our Community Design sessions to develop a plan for the area adjacent to Villiers Street known to local residents as the Lookout. Pictured above this is the concept plan is part of Stage 1 of our proposed redevelopment which is to create a lookout feature and the main pathway through the space to this feature.

The AshfieldCAN sees the site as a potential passive park/community space. With a growing population and infill being indicated as part of the plan for Ashfield / Bassendean this parcel of land should become an important local community asset as a passive local park.

We believe that small local parks are one of the building blocks of creating good local communities and this space offers an opportunity to create such a space.

The AshfieldCAN believe this concept plan is in line with the Town of Bassendean Strategic Community Plan for Bassendean.

North View
Timber on top 30mm



**BEN
LUDLOW**
Auto Service Centre

**For all your
Vehicle Servicing
Needs**

Unit 2, 15 Pearson St, Ashfield

**RING
9279 1483**