

Letters

From Janet Megaritty
Bassendean Memorial Library
jmegaritty@bassendean.wa.gov.au

Ashfield Primary School turned 60 years old in February. I am trying to collect photographs relating to the school for the Local Studies Collection. People can bring them into the Library and I will copy them or they can donate them.

I have already raided the school and only got photos of the pre - primary and nothing else.

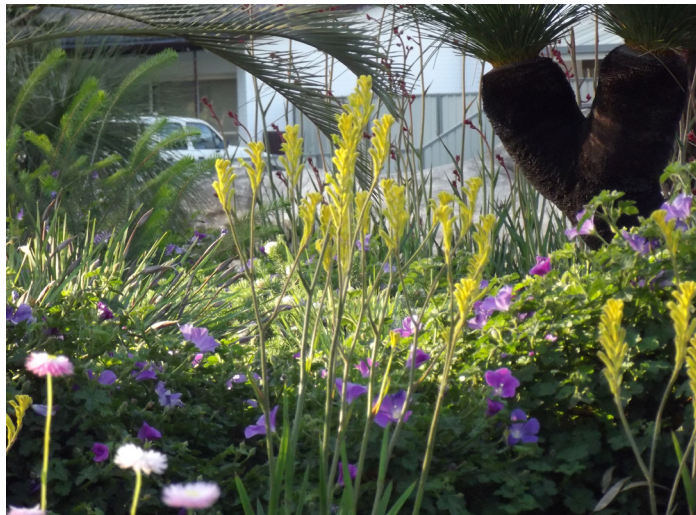
Any old school newsletters are also welcome, any time period other than what is already on the school website. Lists of staff and students are also welcome, even if incomplete. Any assistance you can provide we are most grateful to receive.

Thanks Janet

REMINDERS

- ◆ Your dog must be microchipped from the 1st of November, it is now the law.
- ◆ Next meeting - Ashfield Sports Club 7pm, 19th October, come and join AshfieldCAN
- ◆ Please support your sponsors who kindly sponsor the AshfieldCAN newsletter.

Springtime in Gary Blanch Reserve



OCTOBER 2015

Helping to build a better community **Ashfield** ^{CAN!}

ISSN 1839-3071

Vol 5 No 3

www.ashfieldcan.info

Ashfield ^{CAN!}
community garage sale
8am - 12 noon
24th October

Gary Blanch Reserve
Pearson Street. Ashfield



sellers set up at 7am. event open 8am

for more information and to register as a seller email: info@ashfieldcan.info or call 0402257965

www.ashfieldcan.info

ASHFIELD

How the locals like it



The Ashfield Supermarket (IGA) has been locally owned and operated by the Quaglia family since 1977

Delicious Rotisserie Chickens
\$9.99 Everyday



Steggles NO12 Marinated and Stuffed Chicken
*serving suggestion



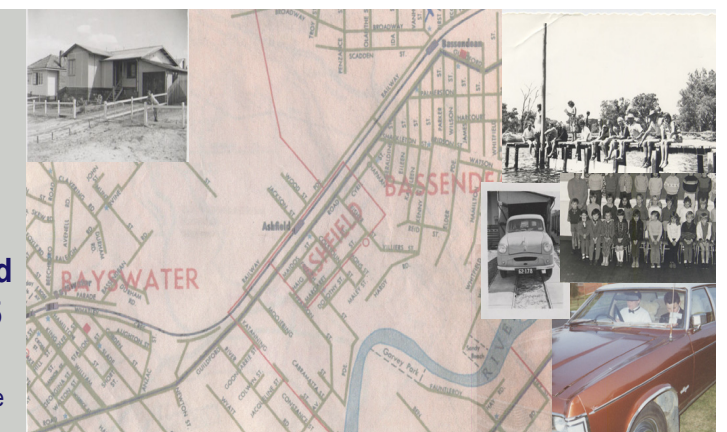
3 Colstoun Road Ashfield, WA 6054

Trading hours 7.30am – 8pm, 7 days

You are invited

Ashfield History Morning Tea
Saturday 7th November. 10am to 11:30am
Ashfield Sports Club. Colstoun Road . Ashfield
RSVP: info@ashfieldcan.info or call 0402257965

Join us for morning tea and bring you photos and memories to share



T.o.B. Mayor Thanks AshfieldCAN

I would like to thank all the community members who attend the big ideas night organised by AshfieldCAN and undoubtedly we can look forward to some very exciting projects taking shape over the course of the next year.

Highlights of projects undertaken in previous years by AshfieldCAN that have enhanced Ashfield greatly include the tremendous makeover of Gary Blanch Reserve, plantings of Everlastings making "Ribbons of Colour" in Ashfield, transforming tired looking bus shelters into exciting art projects with students from Cyril Jackson Senior Campus, designing and construction of seating on Ashfield Reserve and at the Roy Hookway Fishing Platform and of

course the annual Dog's Breakfast. With all this enhancement taking place, Ashfield is also about to become a buzz of activity as the Ashfield Sports Club is now the official home of the Perth Glory W League. The first home game for the Perth Glory Women at the Ashfield Sports Club is on October 24 at 4.00pm against Newcastle Jets. This is a game not to be missed.

The Town is currently endeavouring to establish a Bassendean River Parks Management Committee that would comprise of the following agencies; Department of Planning, Swan River Trust, Department of Parks and Wildlife and the Department of Water along with Town of Bassendean staff, Councillors, key stakeholder groups

and community representatives with an objective to oversee the management of our river foreshore and catchment, and with an initial objective of preparing a management plan for the Ashfield Flats. The Town is hopeful of bringing all these stakeholders together for the benefit of our valued river precinct and will keep you up to date on the progress in the coming months.

On a final note I would like to wish all the candidates in the upcoming Town of Bassendean Council Elections all the very best of luck.

Kind regards

**Cr. John Gangell, Mayor
Town of Bassendean**



Gary Blanch Reserve Blooms



**Fauldings Fish Oil 1500mg
500 Capsules Odourless \$24.99**



**ASHFIELD
COMMUNITY
CHEMIST**

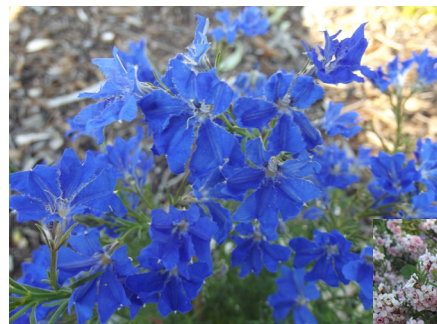
**New chemist in Ashfield
(next to Ashfield IGA)**

Open: Mon - Sat 8am - 7pm

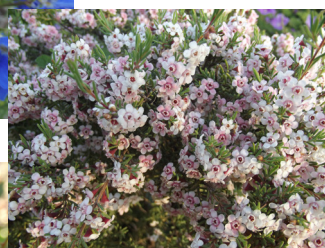
**1B Colstoun Rd, Ashfield
Western Australia 6054**

(08) 6161 9958

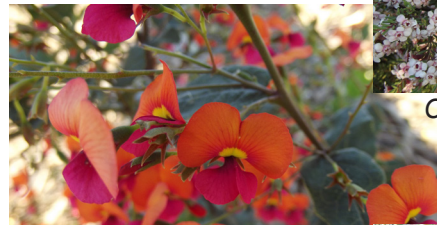
ashfieldchemist@optusnet.com.au



Lechenaultia biloba



Chamelaucium ciliatum



Chorizema cordatum



Banksia nivea



Scaevola "Pink Minx"

See more
pictures on
back page

Embracing the Arts at Ashfield Primary School

At Ashfield Primary School we take pride in our vibrant and creative school community. We believe that it is not only our strong focus on Literacy and Numeracy improvement, but also our dedication to our sports, art and music programs that really help in creating a well rounded education of the whole child.

Studies have shown that a strong and diverse arts program in schools link directly to improved literacy and math skills in the classroom, as well as contributing to greater community cohesion. It's also important to note that children who have exposure to art skills and practices regularly develop greater problem solving skills, learn more confidence through self-expression, enjoy positive interactions with others and improve their self-management and fine motor skills. At Ashfield Primary School we explore

a broad range of art skills and practices within our Specialist Art program and we are aware of the positive impact on our students, both academically and personally.

This year Ashfield students have engaged in a wide variety of learning activities through the Art Curriculum, such as exploring positive and negative space through paper craft, making paper mache bowls from studying traditional bowls and artefacts from a variety of cultures, and we remembered our fallen soldiers with our poppy paintings.

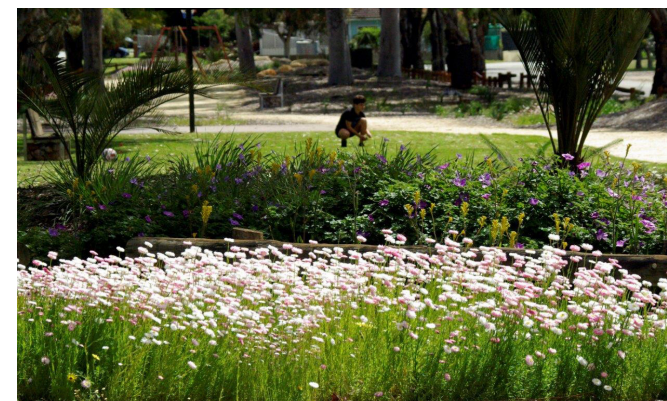
We have studied great masters such as Vincent Van Gough and Joan Miro through IT and games which create a fun, vibrant and engaging learning environment.

We have been involved in many community based programs through the years which

instil within the students the importance of being involved in their community, and shows them how they can celebrate and contribute to the world around them. We are annually involved in the Bassendean Art prize by submitting excellent work from students across the school. This year we took great pride being involved in the Book Week Display at the Bassendean Library linking our full school Literacy and Arts program in an exciting way.

Recently we have begun exploring the use of video lessons via YouTube so that parents and students can access some great step by step and easy to follow art lessons, both throughout the school term and with a particular focus on creating a school holiday art program, with new video uploaded weekly at Miss Read's Art Room on YouTube.

It has been an exciting year at Ashfield Primary School with an array of colour and exploration of self through the Arts, which we believe creates a positive impact on our students enabling them to be more confident, self aware, lifelong learners.



Thanks to all those who came and supported our "Ribbons of Colour" planting afternoon tea in Gary Blanch Reserve. The everlastings are thriving and they can't help but make you smile when you see them. The park is now a riot of colour and is looking fabulous this spring. We will be doing "Ribbons of Colour" again next year and hope to extend the plantings to other places!

Ribbons of Colour

**Absolutely
SETTLEMENTS**

Carol Lilley

Licensed Settlement Agent

ph 9271 0083

www.absolutelysettlements.com.au

**"Quality means doing it right when
no one is looking", Henry Ford**

PO Box 303 Bayswater WA
Knight Lilley Pty Ltd (ACN: 169 828 442)
ATF The Knight Lilley Unit Trust
Trading as Absolutely Settlements
Licensee in Bona Fide Control - Carol Lilley

From the Archives . . . Ashfield School History

I was transferred to Ashfield in 1956 and taught grade 1 and grade 2 years.

Headmistress was Mrs Thelma Duncan who had opened the school the previous year.

1956 Staff Mrs Evelyn Grenfell, Miss Margaret Byrne and myself Joyce Whelan. During the year Margaret Byrne married and resigned. She was replaced by Mrs Jean Thick.

The school went up to grade 4 and as such came under the control of the Superintendent of Junior Primary Schools - Mrs Flora Tait.

The class numbers in year one were very high partly due to the influx of migrants in the 1950's. I think I had approximately 50 children both years I was there.

Mrs Thelma Duncan, our headmistress was at the time around 60 years of age, but very full of energy and a stickler for discipline. Even the staff were very much in awe of her!

She drove a black Morris Minor which was always immaculate inside and out. She always wore leather gloves when driving! There was no provision for teacher parking in those days and Mrs D.

had an arrangement with a parent who lived nearby to garage her car there. (I think it was Mrs Richards)

Gardens and lawns were planted at the front of the school but children were forbidden to play out there. They were confined to the large square of bitumen at the back.

Mrs D was very particular about keeping everything locked. Each classroom had to be locked every afternoon and the keys hung in the office. (the cleaner had their own set of keys to gain access.)

The Teacher's toilet was also kept locked.

Another "pet hate" of Mrs Duncans was the wearing of long pants by the small boys during winter. Her contention was that the children went out to play, got wet and then sat in class in wet clothing.

There was no piano at the school in those days, but Mrs Duncan used a tuning fork which she would strike against the table to get a suitable starting note for singing.

1957 There was an extra staff member

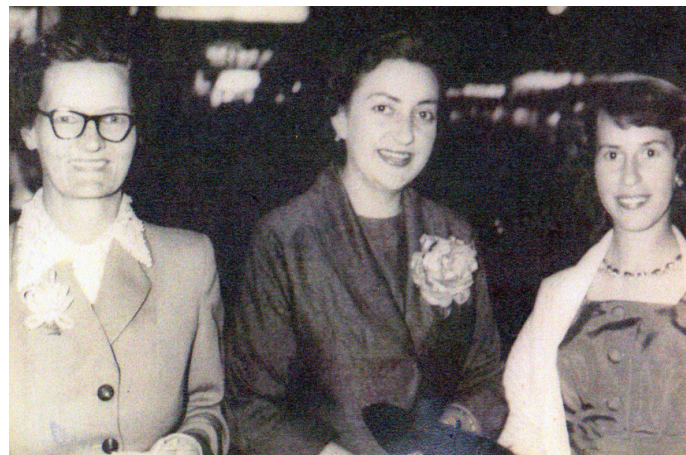
because the School went to Grade 5.

Staff members: Mrs Myrtle Reddin, Mrs Joy Christmas, Miss Noel Parker and myself.

At the end of the year Mrs Duncan was appointed to Belmay Junior Primary School, which was created by splitting the huge Primary School. After her retirement Mrs Duncan lived on into her 91st year. Ashfield's first headmistress was a remarkable woman!

Joyce Offer (nee Whelan)

Former Ashfield Primary Teacher



Mrs Grenfell, Miss Whelen and Mrs Thick

Your new committee for the 2015-16 year is as follows:

Lucy Bromell - President
Bob Brown - Vice President
Lenny McLeod - Secretary
Christine Fisher - Treasurer



Bright Red AshfieldCAN caps were introduced to identify members at events. The caps were given out to members at the August meeting as inspirational "Thinking Caps" for projects they wished to see addressed in the coming year.

Free - History Morning Tea

The AshfieldCAN is holding another History tea, see ad P.1. Mark Johnston has kindly offered to try and collate all the items of interest we have received through the newsletter and from our previous history afternoon tea. We love hearing all those stories about what happened here in the past and this is a good opportunity to come and tell us a few more.

We are especially interested in information about Ashfield Primary School as we are doing a small project with the school as it is their 60th year. They will be celebrating in December. For more information regarding their 60th celebration please contact the school directly on 9378 2499

If you cannot make the morning tea but have information you would like to share please contact us a info@ashfieldcan.info or telephone 0402257965 If you are going to join us for the Morning Tea please can you RSVP to the above contacts as we want to make sure we have enough cake!!!



AshfieldCAN helps with the planting upstream of the boardwalk bridge.

Riverbank restorations continue towards the fishing platform.

Community Garage Sale Back Better than Ever

AshfieldCAN Community Garage Sale is on again!

AshfieldCAN is holding their third annual community garage sale on Saturday . . .

Sat. 24 October from 8am to 12pm.

This year we are returning to the Gary Blanch Reserve, Pearson Street, Ashfield.

All are welcome to attend, either as a seller, or as a participant to enjoy a great community event at this beautiful park.

AshfieldCAN will have entertainment for the family, morning tea and barbeque breakfast available to purchase and, of course, the opportunity to grab yourself a bargain!

We look forward to seeing you at our community garage sale.

Register as a seller on www.ashfieldcan.info, or by phoning 0402 257 965, or just arrive on the day to enjoy the fun



"Award Winning Plumbers"

Master Plumbers and Gas Fitters
 Association of WA
 2008 Plumbers Licensing Board
 Plumbing Business of the Year

289 Guildford Rd, Maylands WA 6051
 Ph: (08) 9271 4021 Fax (08) 9370 4750
water@prideplumbing.com.au
www.prideplumbing.com.au

Digital and Vinyl Designs



We specialise in:
 4WD suspensions
 Digital and Vinyl Designs
 for all your signage needs

**Unit 2/15 Pearson St
 Bayswater 6053**

9379 3075

CALL US TODAY

Dave Kelly Supporting AshfieldCAN

Last summer's Ashfield Flats fire came dangerously close to homes along Hardy Road. For the last 7 months, I have been asking what the State Government is doing to minimise the risk of a repeat this summer but little detail has been forthcoming.

I have written to both the Minister for Emergency Services and the Minister for Planning (as the land owner) on several occasions asking what measures are being taken. I understand the two departments recently met to discuss the ongoing risk management of the Ashfield Flats Reserve and that some new strategies were agreed. However, the Minister for Emergency Services has not given me any details despite my request.

With the start of our next summer not far away, I believe the Government should be giving local residents clear details of its fire management plan for the reserve.

If I don't get a straight answer from the Minister in the next few weeks, I will start asking questions in Parliament.

Best wishes



Dave Kelly – Bassendean State MP

(the electorate of Bassendean includes the suburb of Ashfield)

Dave KELLY



Representing
Ashfield in
State Parliament

e dave.kelly@mp.wa.gov.au

p 9279 9871

w www.davekellymp.com

Ashfield is part of the State Electorate of Bassendean



Presidents Annual Report 2015

Here we sit at the end of another busy year and it has given me time to reflect on what the AshfieldCAN has achieved and what we need to achieve next.

This year has seen the Gary Blanch Reserve stage one completed and it has grown into a fabulous community resource. So many more people are using the park. All the plantings have grown fantastically and the park is a riot of colour this Spring. More plantings have occurred recently and from our planning day at the last meeting a number of new ideas have developed. We are going to see how many of these we can realise in the coming year.

One big idea is to add storage and another play structure into the park.

The Gary Blanch Reserve is something that this community can be extremely proud of.

In the last year we have again held our regular events such as the Garage Sale Trail, the Dog's Breakfast and the Christmas function.

The Dog's breakfast was again very successful despite being held in March instead of October as it has been in the past. Linking it to the Autumn River festival has had its benefits.

The Garage Sale was done in conjunction with the Ashfield Primary School but will be returning to Gary Blanch this year now that the gardens in the park are more established.

The Christmas function highlighted the importance of being a community and importance of knowing and supporting your neighbour. Sadly the Christmas party was interrupted by the devastating event of the fire at the Collin's house. I was glad that as a community we were able to support the Collins family at such a time and on reflection realised that this occurred because in that area we all know our neighbours, at least by name. Knowing the names of your

neighbours is the first step to encouraging a sense of community and support in any neighbourhood.

The other item that has taken time on our agenda this year has been the River and the Ashfield Flats.

Highlighting the concerns of this area and trying to get a better style of management for the river and surrounds has been our goal. This was done through the River walk and the River Forum events that were held. This area is so vitally important as a natural environment and as a community resource that it is imperative that it gets the more comprehensive style of management that it deserves. I am hoping that the decision by the Town of Bassendean Council to set up a River Parks Committee will lead to a better deal for this significant resource.

This year we have seen some fabulous newsletters go out and the continuing of a Facebook page which has been well used. The website still continues to provide information and allows us to store much of our data.

Last month we held our Big ideas forum and a number of good ideas were suggested of things we can do in the future. We will work towards making as many of them as possible happen. All good ideas need help and support to realise them so I would like to thank all those people who have supported the AshfieldCAN in the past. Without your support we have nothing. As there are too many people to mention I would like to thank everyone who has helped out in any capacity and encourage everyone to continue to support what we do to help build a better community.

In the coming year we will continue with our main stay events, continue to work on the Gary Blanch Reserve and we will be engaging in another History project. We are of course always open to new good ideas.

Thank you for being part of this community.

Lucy Bromell

President - AshfieldCAN



Notes from Verna
Suburb Manager
Ashfield
Ph: 0432 563 800

I recently spoke to Senior Sergeant Ric De Castro at Kiara Police Station. He sent the following report for our newsletter.

Stealing offences in Ashfield where vehicles have been broken into and property stolen are occurring far too often. Police are requesting owners to lock their cars and store any valuables out of sight. Do not give offenders the opportunity to target you with these crimes.

Please be aware of your surroundings when out and about. The more vigilant you are the less likely you will be a victim of crime.

In regard to crime in Ashfield there were some reported damages involving fences and gates. In general, in regard to thefts, burglary, drug and graffiti offences Ashfield is experiencing a decrease in these areas of crime.

Police are encouraging residents not to become complacent, but to remain vigilant and continue the good work in being a proactive community. If you don't already know your neighbours, get to know them, as one day they may come to your assistance.

BEN LUDLOW

Auto Service Centre

For all your Vehicle Servicing Needs

Unit 2, 15 Pearson St, Ashfield

RING

9279 1483