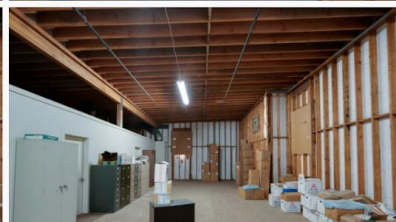
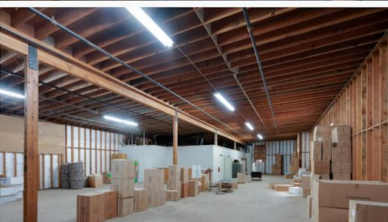
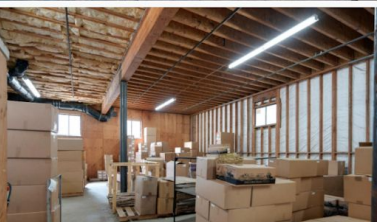
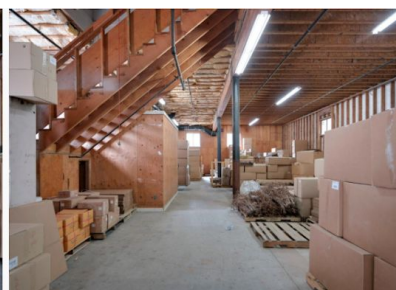
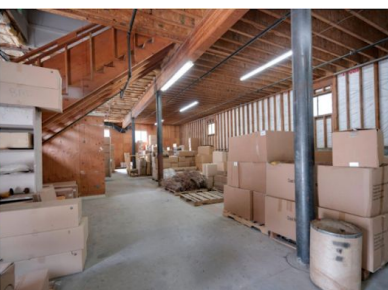


Selena Scola |

AgTech Community Garden II 245+ acres

01/2021



- Agtech - automated fruit and veg farms
 - Grants for robot farming
 - Edu internships for agtech
 - Rehabilitation, housing, and work for unhoused and felons
 - Technical Assistance -Technical assistance to disadvantaged community
 - California Conservation Corps
 - Training and Workforce Development Program
 - Workforce training and employment through CCC centers
 - Restoration of natural lands and urban greening
 - Energy efficiency upgrades and retrofits in public buildings
 - Real life STEM to encourage those of all ages
 - Food donation to impoverished in the area
 - Should help with land tax too
 - Food Waste Prevention and Rescue Grant Program
 - Local seed production to account for climate change
 - Indoor, farm trailer growing
 - Greenhouse growing
 - Funding Agricultural Replacement Measures for Emission Reductions (FARMER) Program
 - Sustainable Agricultural Lands Conservation Program (SALC)
 - Alternative and Renewable Fuels Program
 - State Water Efficiency and Enhancement Program (SWEEP)
 - SWEEP - DWR (Prop 1) Joint Project
 - Food Production Investment Program
 - Renewable Energy for Agriculture Program
 - Healthy Soils Program
 - Climate Adaptation and Resiliency Program
- Windmill farm
 - If zoning allows wind farm to generate revenue
 - Supply the tesla charging station via wind power
 - Supply as many people with electricity from the wind farm
 - Community Air Protection Program
 - Climate Change Research Program
 - Transformative Climate Communities (TCC)
 - Renewable Energy for Agriculture Program
 - Greenhouse Gas Reduction Loan Program
 - Climate Ready Program and Adaptation
- Tesla charging station - charging-partners

- Set up partnership with tesla for a charging station for revenue
- Low Carbon Transportation
- Low Carbon Transit Operations Program (LCTOP)₂
- Climate Change Research Program
- Low Carbon Fuel Production Program
- Greenhouse Gas Reduction Loan Program
- Solar panels
 - Produce more energy
 - Revenue stream
 - Climate Change Research Program
 - Transformative Climate Communities (TCC)
 - Renewable Energy for Agriculture Program
 - Greenhouse Gas Reduction Loan Program
- Horse Housing
 - Rent out a stable for people with horses as a revenue stream
 - Poop for fertilizer
 - Poop for energy production
- Water
 - Capture, infiltrate, and store stormwater
 - SWEEP - DWR (Prop 1) Joint Project
 - State Water Efficiency and Enhancement Program (SWEEP)
 - Water and Energy Use Efficiency Program
 - Climate Ready Program and Adaptation

-
- <https://ww2.arb.ca.gov/our-work/programs/california-climate-investments/california-climate-investments-funded-programs>
 - <http://www.caclimateinvestments.ca.gov/about-cci>
 - <https://www.energy.ca.gov/programs-and-topics/programs/renewable-energy-agriculture-program>
 - <https://www.nal.usda.gov/afsic/grants-and-loans-farmers>
 - <https://ww3.arb.ca.gov/cc/capandtrade/auctionproceeds/communityinvestments.htm>