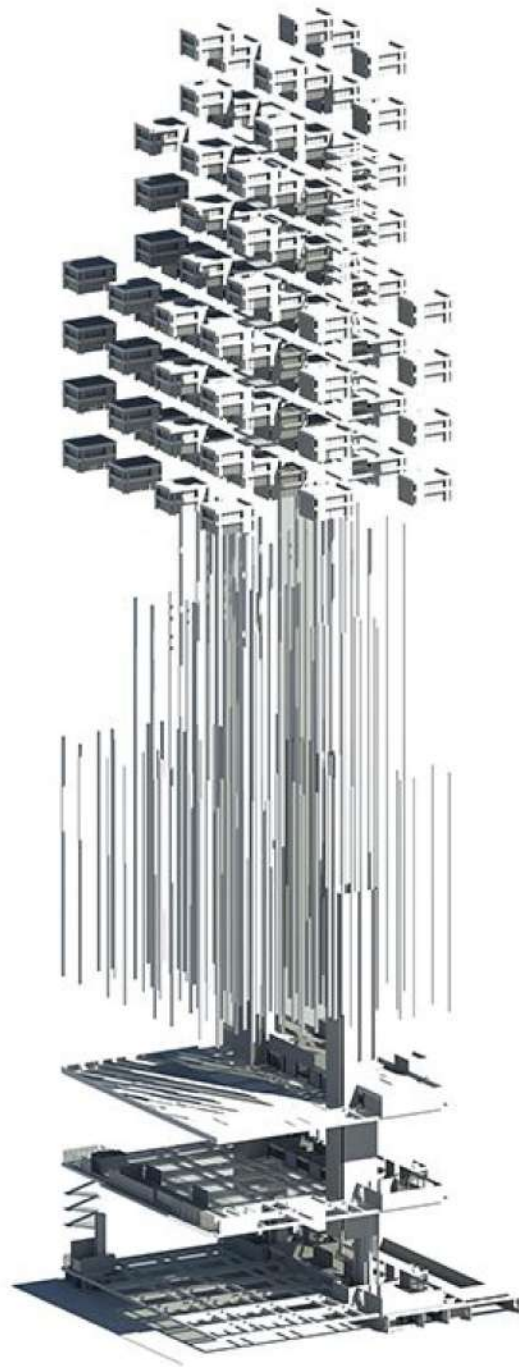
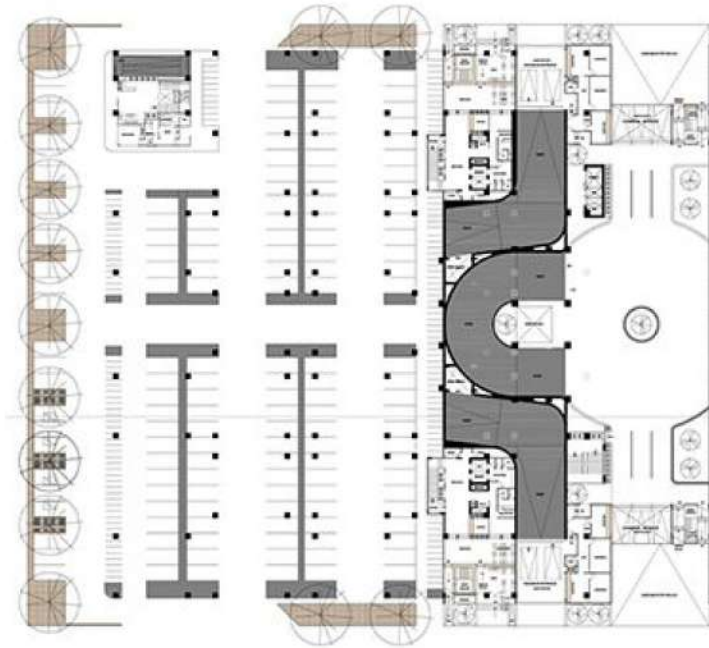


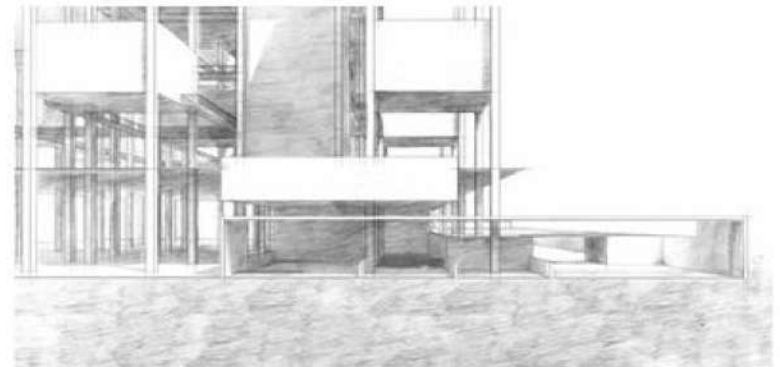
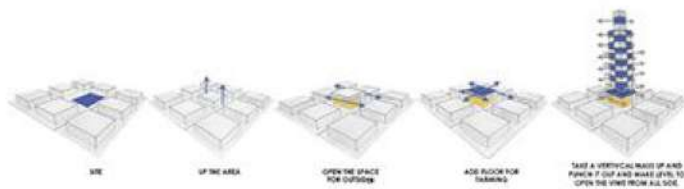
# AR CHI TEC TURE







**GROUND FLOOR PLAN**





# HIGH-RISE PROJECT

**SITE: MERIT HOTEL,  
SADDAR, KARACHI**

Mix use project

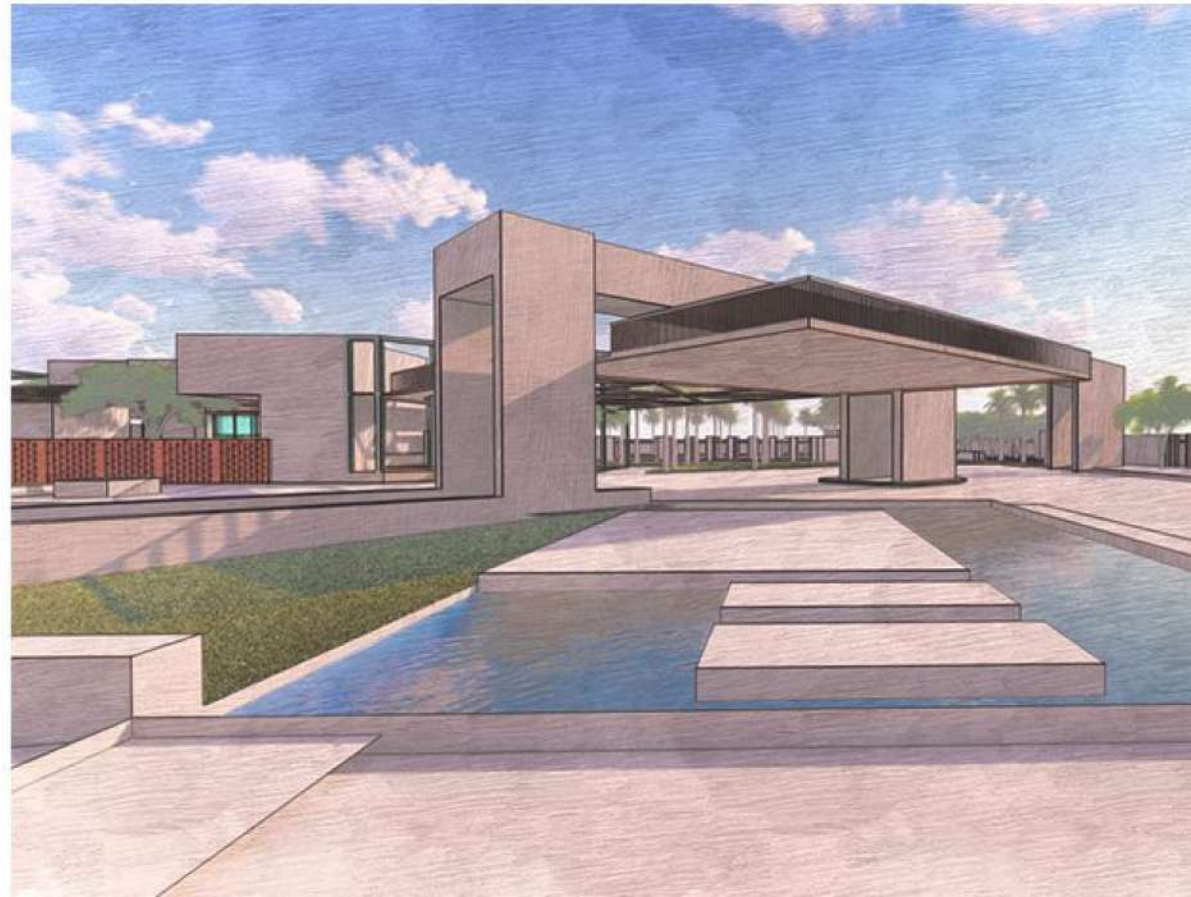
to get the better life style with all green efficient facilities. as well as the project use for the multi purpose tasks.



## SITE: BUHARO

### FARME HOUSE PROJECT

The total area of site is six acre. to design for the nuclear family. its a private land to design for different age group person with all relevant activities.



# FARM HOUSE



## MASTER PLAN

Master plan is divided into different use phases according to the central part of the farm house



# APARTMENTS PROJECT

**SITE: BAHRIA TOWN,  
KARACHI**

**Mix use project**

**Commercial and residential project,  
with five apartments on each floor.  
with all basic facilities according to  
the Bahria by-law.**



## BUILDING FEATURES





# INTERIOR PROJECT

## **SITE: ABBOTTE (SIDE AREA)**

Office interior project

the space is consider as redesign for office use, need proper entrance lobby, waiting, offices manager rooms and executive area.





# INTERIOR PROJECT

## SITE: BAHRIA APARTMENT

House interior project

the space is consider as modern design living space, play with martials in a minimalist approach.







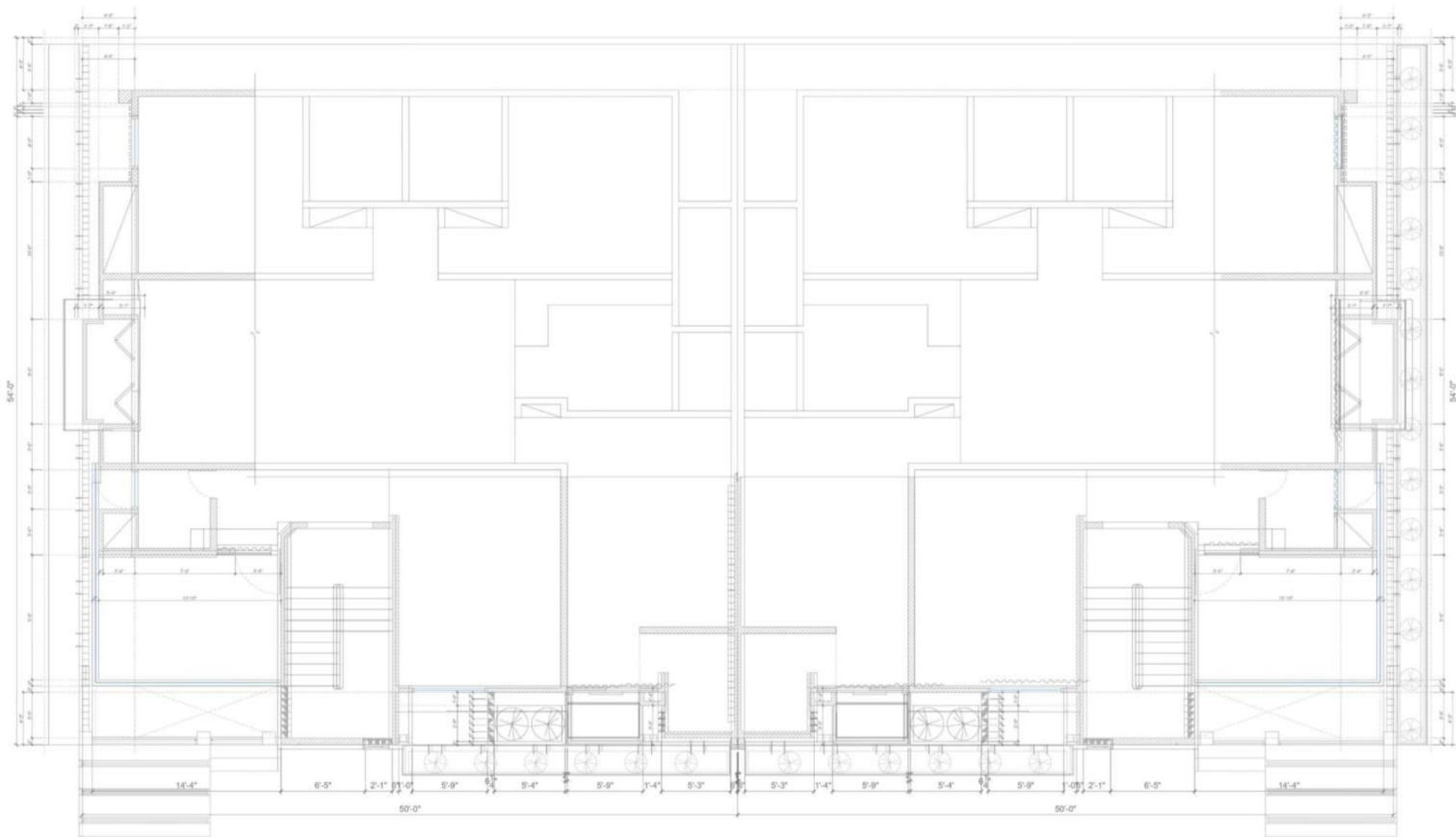
# KHAN HOUSE

RESIDENTIAL

---

LOCATION: GULSHAN

AREA: 300 sq.yd



PLAN FIRST FLOOR LEVEL



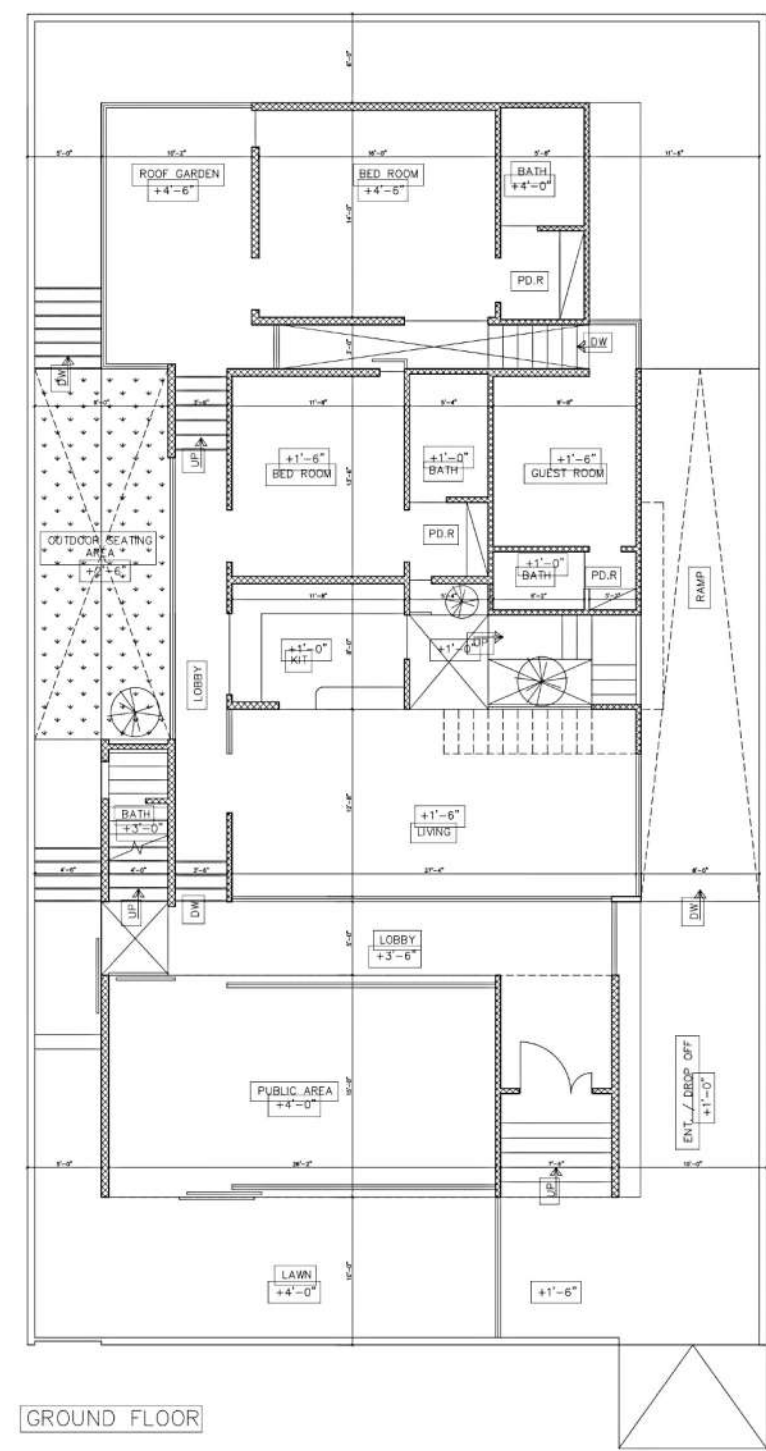
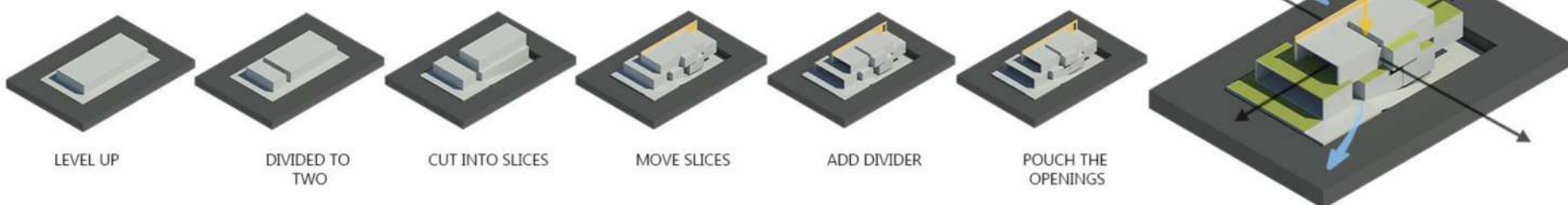
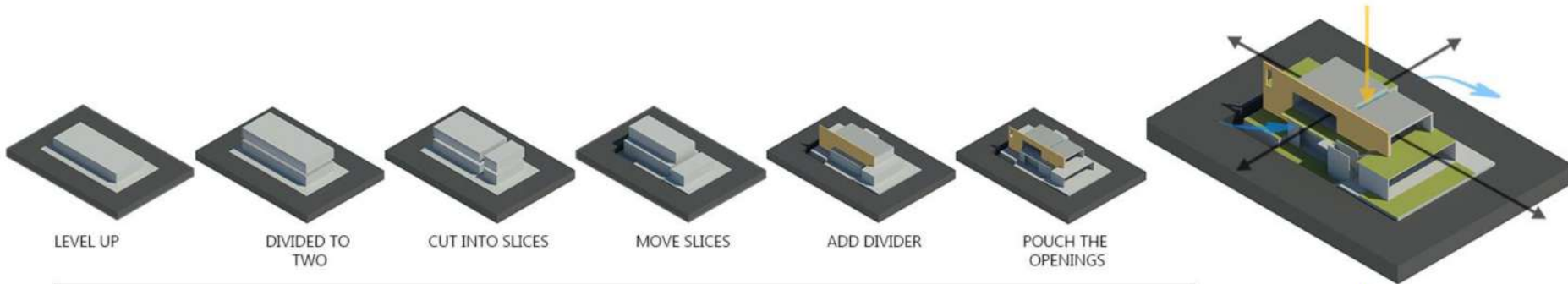


# CUBE HOUSE

---

LOCATION: DHA

AREA: 500 sq.yd





Let's have a coffee with us

WoodnVeneer

ADDRESS

C-35, Lane-6, Bukhari Commercial, DHA, Phase-6,  
Karachi-Pakistan.

PHONE

021-333-98039

EMAIL

[info@woodnveneer.com](mailto:info@woodnveneer.com)

