



AbsorbaMural

Acoustic Wall Solutions

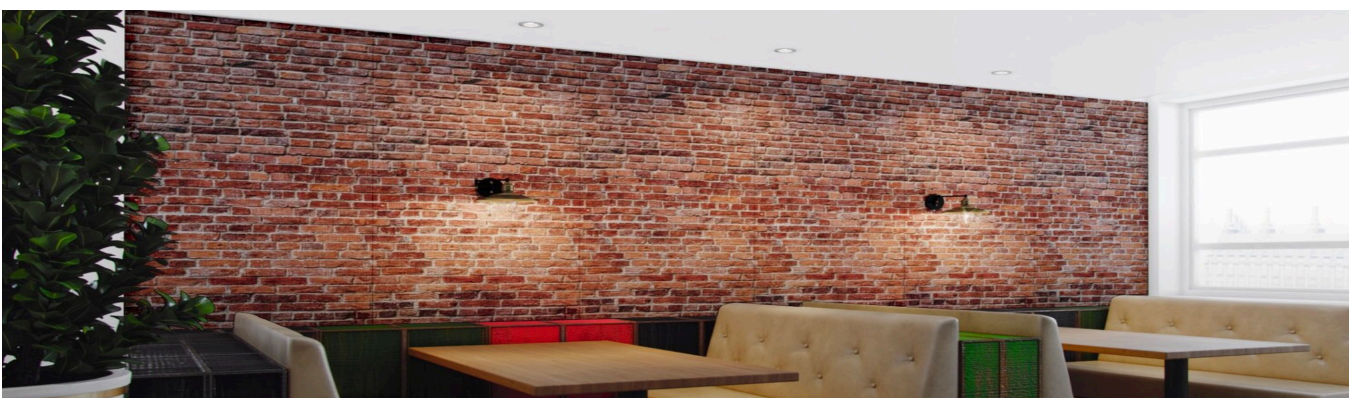
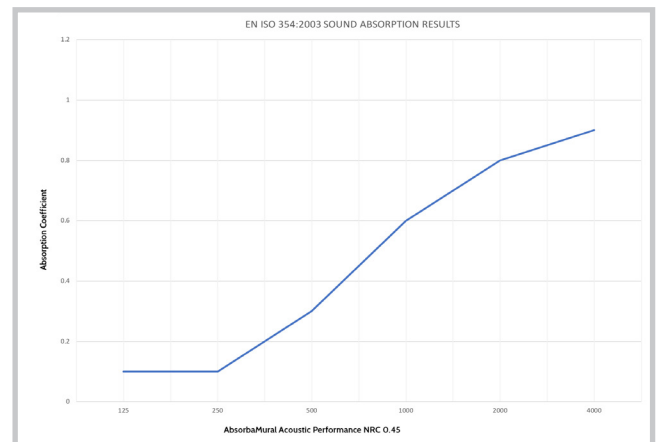
AbsorbaMural

Acoustic Wall Solutions

Our printed felt acoustic panels are available in a wide range of impressive designs offering a creative and innovative approach to managing noise while reducing reverberation and making a stunning visual impact.

Product Features:

- + AbsorbaMural range options - Mural, Bespoke, Pattern and Plain
- + Panels can be printed to work with your specific requirements
- + Transform any space in your learning, living or work environments with perfect acoustic control
- + Supply your own image for a bespoke design
- + Quick and simple installation
- + 12mm panels with a Class D 0.45 NRC rating
- + Manufactured using 50% recycled polyester
- + Fire Rating: B-S1-d0 ASTM E84-16 Class A



AbsorbaMural

Acoustic Wall Solutions

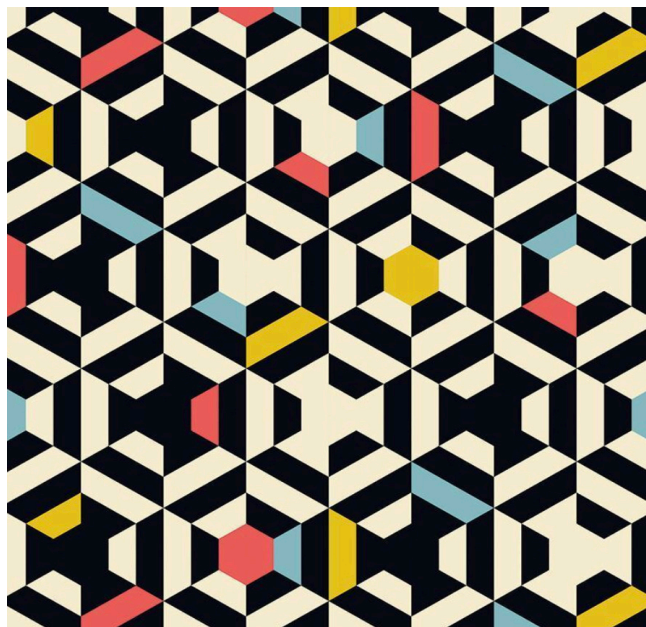
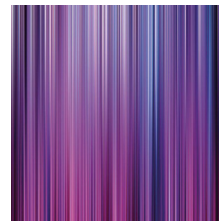
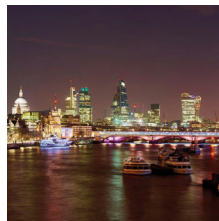
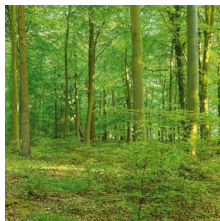
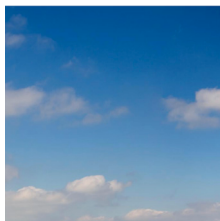
Landscape, Cityscape and Abstract:



AbsorbaMural single panel size is 2440 x 1220.

Choice of over 15 stock images up to 17 panels wide covering an area of up to 20m.

For full details of images available please contact us.

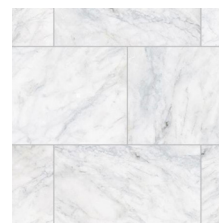
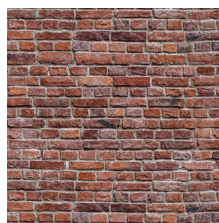
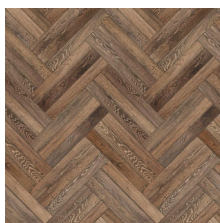


Pattern

AbsorbaMural single panel size is 2440 x 1220.

Choice of over 20 stock images in a variety of colours and styles.

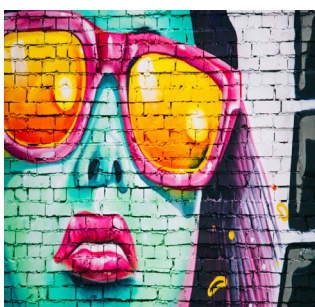
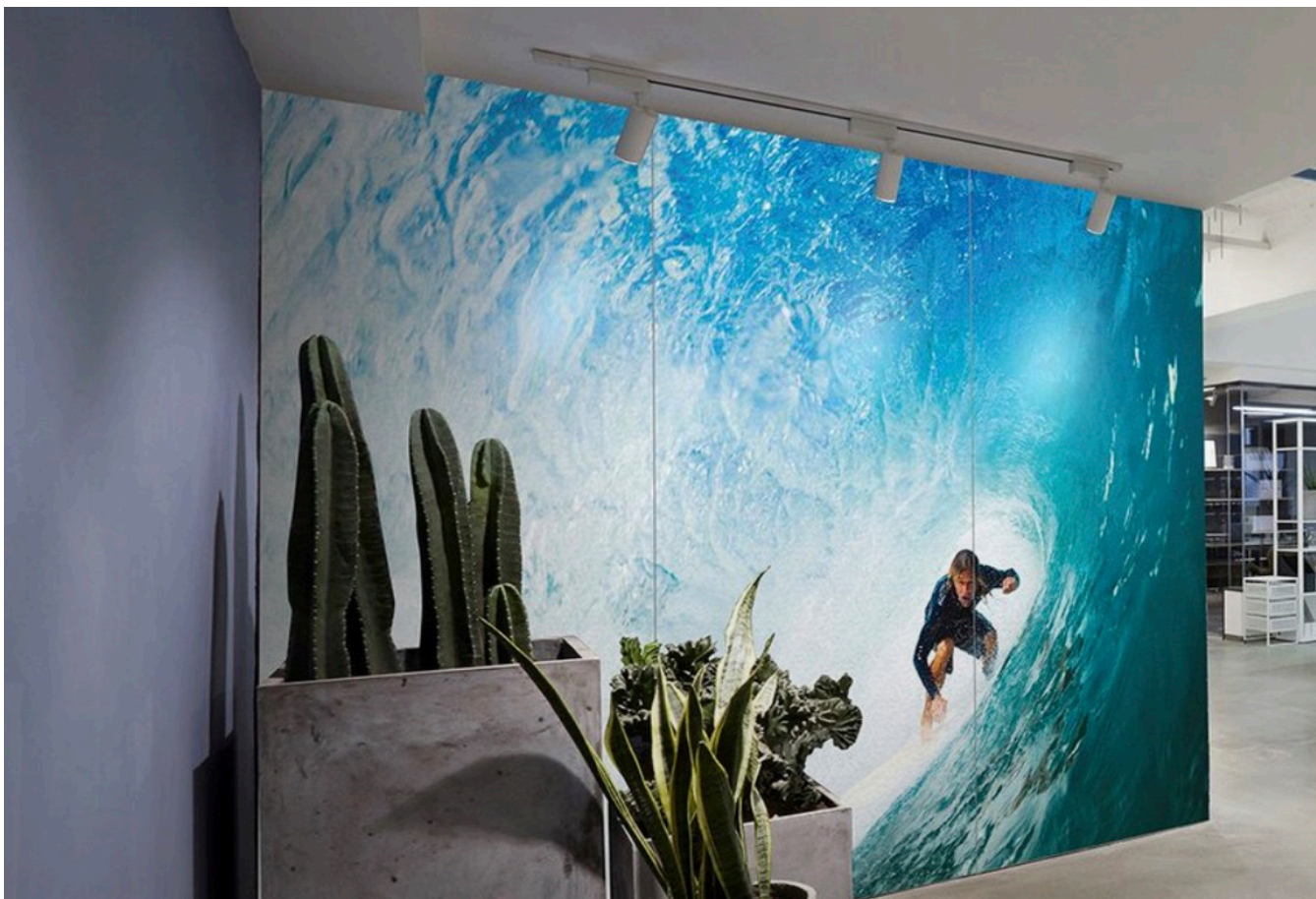
For full details of images available please contact us.



AbsorbaMural

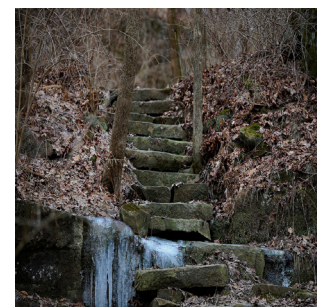
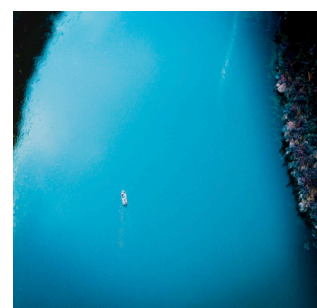
Acoustic Wall Solutions

Bespoke



Minimum order of 4 panels for our bespoke option, with full creative control of your design.

AbsorbaMural Bespoke is a stunning way to promote your company culture in multiple areas throughout your business, as well as providing clients with acoustically sound and consistent global branding. Contact us to discuss your bespoke design!



Manufactured by

Workplace Acoustics
Unit 1A, Suite 4, Tectonic Place,
Holyport Road, Maidenhead, SL6 2YE

0333 7000 080
info@workplaceacoustics.co.uk
www.workplaceacoustics.co.uk

Distributed by:

