

## Problems?

Maximum size of video doorbell camera:

- Ring 1,2,3,3 Plus and 2020

- Eufy

- Arlo

- Blink

### Generic Brands:

#### Maximum size of

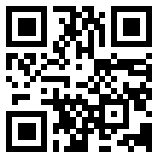
5.15 in. tall x 3 in. wide or  
5.84 in. tall x 2.31 in. wide  
(130 mm x 76.2 mm or  
148.3 mm x 58.7 mm)

**NOTE:** if your camera is smaller than the Outer Container Bracket's front window, your camera cannot be installed.

To watch our installation video visit:

**DoorbellBoaTips.com**

or scan this QR code



© 2021 AllStar Innovations

DOORBELLBOA is a registered trademark of Doorbell Boa, LLC. Third party trademarks are the property of their respective owners. No endorsement is implied.

Distributed by Allstar Innovations | Hawthorne, NY 10532

Made in China

Product Color and Appearance May Vary | Patent Pending

Center 3M Strip here

3M Strip Measure

Place at edge of door

# DOORBELLBOA<sup>®</sup>

## WIRELESS VIDEO DOORBELL DOOR MOUNT

### FEATURES:

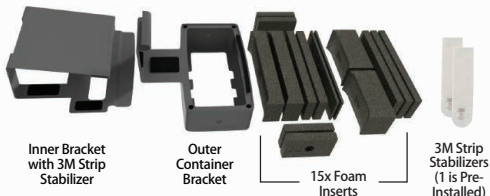
- Easy Installation
- Sturdy Steel Brackets
- Anti-Theft Design
- Help Avoid Property Damage
- Foam Inserts
- Easy To Remove And Take With You!



Felt Door Protectors  
Pre-Installed

## Installation Guide

### PRODUCT DIAGRAM:



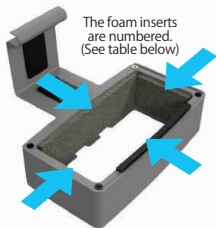
## FIRST TIME USE :

**NOTE:** Wireless Video Doorbell Camera must be purchased separately. Set up your video doorbell camera referring to the camera's instruction manual such as fully charging the battery and connecting it to your wi-fi network. Once fully set up, you are ready to begin.



**STEP 1:** We have included custom foam inserts for Ring, Eufy, Arlo doorbell cameras and the Blink camera. Please follow table below.

However, our inserts will work with many different doorbell camera brands and models. You will need to mix and match to get the best fit for your camera.



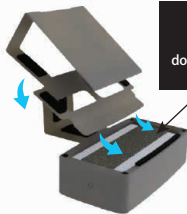
### VERY IMPORTANT

Your video doorbell camera must be centered  
(Use equal amounts of foam on each side).

Camera	Side Foam Insert	Top/Bottom Foam Insert	Back Foam Insert (Use equal amounts of foam on each side)
• Ring 1,2,3,3 Plus and 2020	#1	#2	#1
• Eufy	#5	#3 (Only one insert needed at top of camera)	#1
• Arlo	#4	Not needed	#6
• Blink	#7	Not needed	#1

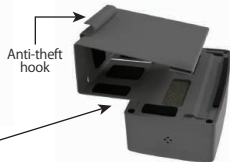
Place the Outer Container Bracket faced down and insert the foam inserts into the camera housing as shown. Once foam is in place, insert camera facing downward. **NOTE:** it will be a tight fit, but push it in. Your camera will be more secure.

**STEP 2:** Slide the Inner Bracket into the Outer Container Bracket under the containers' edge securing the video doorbell camera inside.



### VERY IMPORTANT

Place back foam insert behind the video doorbell camera. It keeps the camera pressed forward and more secured.



**STEP 3:** Be sure to snap the Inner Bracket in place under the anti-theft hook

**IMPORTANT:** Remove outer half of 3M Strip located on the Inner Bracket. Using the 3M Strip that was removed, place on the inside of your door using the ruler on the flip side.

**STEP 4:** Gently open Inner Bracket over edge of door and fully slide onto door.

The Velcro Stabilizer Strip on the Inner Bracket will connect with the 3M Strip on the door to keep Doorbell Boa from moving. Gently press on Bracket where 3M Strip was placed on door.

