

St. Peter Claver Catholic Community
Town Hall Meeting
April 3, 2022

What we do will show what we mean by what we say!

- I. What we know about St. Peter Claver Catholic Community in general?
 - A. We worship on Sunday with 25 people present on a consistent basis
 - B. Virtually – varies from 2 to 10
 - C. We have \$90,000 of funds per year in collections and other donations
 - D. We have \$20,000 - \$30,000 per year in grants to reach out to the community, with a priority on youth and young adults
 - E. We have Lectio Divina – 6 people are consistently there
 - F. The organizational flow chart will be managed by Priests in Solidum
 - G. We have a Finance Council
- II. What do we want to know about the parish in particular?
 - A. Ed Shea is retiring and what will happen to Administration
 - B. Jennie Sinatra will be reduced from 12 hours a week to 5 hours
 - C. We are building a stronger relationship with Loyola with Chris Kendall
 - D. We have a grant to train teams and to train Ministers of Service
 - 1. Evangelization to lead the Mission Commission
 - 2. Formation to lead the Ministry Commission
 - 3. Administration to lead the Stewardship Commission
 - 4. Pastoral to encourage the commissions
 - 5. Ministers of Service to assist commissions and worship
- III. What do we want to know about the Family of Parishes?
 - A. We will have parishioners representing us with Family of Parishes
 - 1. Family Pastoral Council
 - 2. Family Finance Council
 - 3. Family Leadership Council
 - B. There are 6 roles/responsibilities to be filled, either one for the Family or one for each parish in the Family. How they will be funded is yet to be determined.
 - 1. Mission Support – administration
 - 2. Discipleship Formation
 - 3. Evangelical Charity
 - 4. Engagement
 - 5. Family Ministry
 - 6. Worship

St. Peter Claver Catholic Community
Town Hall Meeting
April 3, 2022

C. Why I want you to know, as your Pastoral Servant-leader, sent to accompany you, Confirmed Catholic Christians, to do the impossible - to walk by faith and hope and love with the grace of God through Mary.

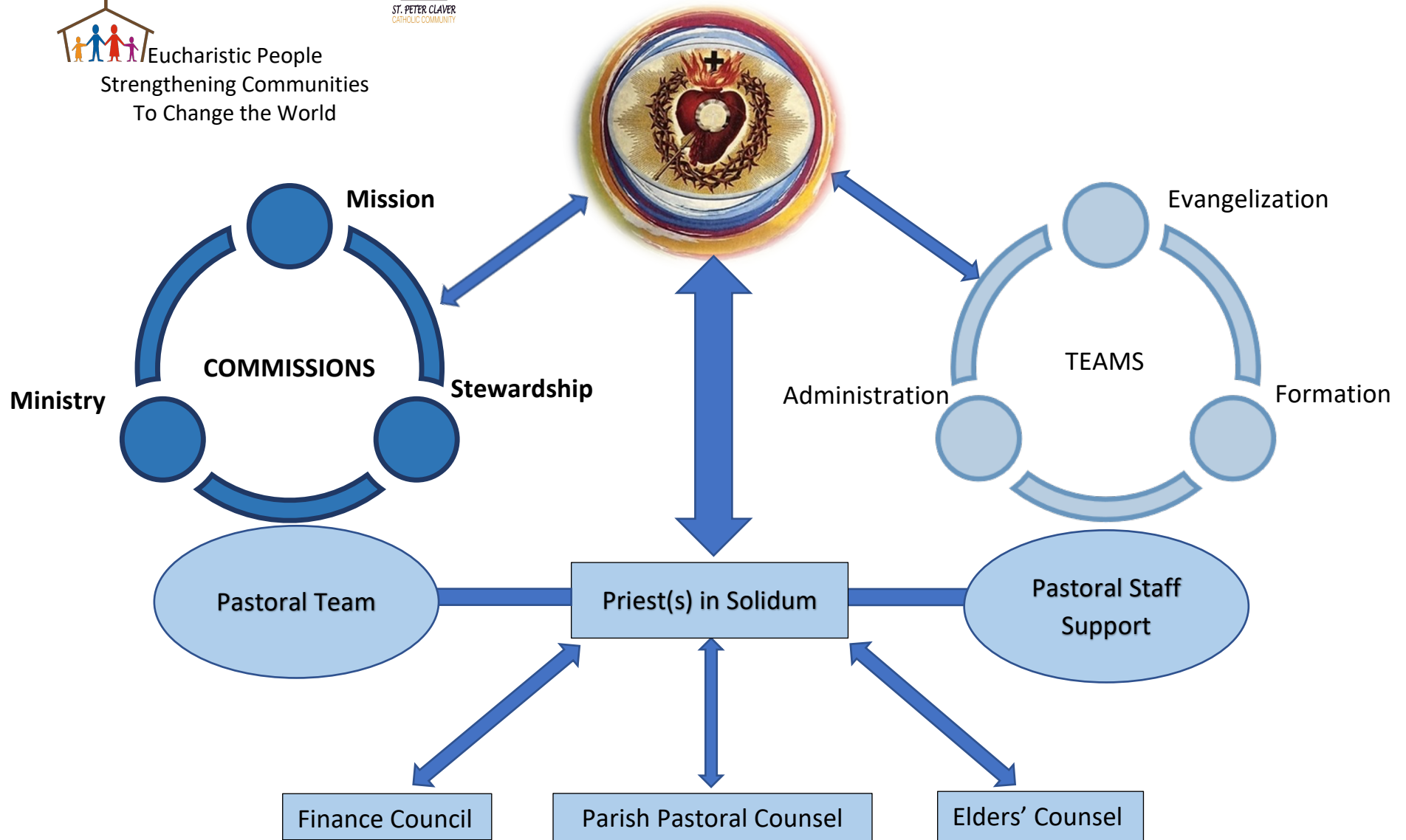
1. Accept what we cannot change
 - i. Fr. Marko is in charge of the Family of Parishes
 - ii. The Administration of funds and positions will be controlled by the Family of Parishes
 - iii. What we were taught to expect as a Catholic
 - iv. The priests available to the Archbishop will be cut in ½ in 5 years.
 - v. Other?
2. Encourage each other to change what we can
 - i. Learn how to be a Catholic responsible with each other for the future of our faith community
 - ii. Reach out to passive Catholics with a priority on youth/young adults
 - iii. Heal divisions among races & religions
 - iv. Reach out to people who are not with us as a praying community
 - v. Share our joy
 - vi. Get involved with the neighborhoods being managed by developers and government
 - vii. Encourage Loyola High School Board to rebuild the Church
 - viii. Be responsible tenants of our Parish House and chapel.
 - ix. To raise funds – CSA, State Tea, Jazz on the Grass, others
 - x. Other
3. Pray for wisdom to dare to be different
 - i. To be transformed to be co-responsible
 - ii. To encourage Fr. Marko to manage the positions to fill and the people to do so
 - iii. To be good Stewards over time and talent
 - iv. To live within the limits of our treasury and be willing to do more
 - v. The Convention to “heal the racial divide” on May 22 (see the flier) – to invite, to assist in preparation, to want to take action
 - vi. To assist in finding an Administrative Coordinator to work with parishioners and keep the office and records in order
 - vii. Join one of the commissions to do what we are chosen to do by Jesus Christ
 - viii. Identify needs and write grants to meet them
 - ix. Keep St Vincent de Paul serving the poor
 - x. Other



ST. PETER CLAVER CATHOLIC COMMUNITY ORGANIZATION FLOW CHART



Eucharistic People
Strengthening Communities
To Change the World



St. Peter Claver Catholic Community Ministry Commission

Will provide opportunities for deepening prayer life and faith life for youth, young adults, and adults. In addition, they will reach out and re-connect with those individuals and families who have disconnected from the Eucharist and the Church. The commission will work to develop and implement a plan to discover areas of need and ways to support all parishioners through accompaniment, programs, resources as intentional Apostles of Mary chosen in confirmation to be sent.

A. Women/Men Bridging Change: Wounded Healers Care Groups

- Family Outreach Ministries – Create and maintain a resource display.
- Lectio Divina – 1 hour per week
- Home visitors (EMHC) – Taking Communion to the Sick
- Hospitality – Greeters at Mass and other opportunities
- Intercessory Prayer Team Letters & Membership – 3-4 hours per month

B. Coordination & Formation of Worship Ministries

- Work with Priest(s) to coordinate and provide liturgical year prayer experiences:
 - Sunday Liturgy
 - Funeral Service Ministry
 - Prayer Services
 - Choir
- Formation & Coordination: with Ministers of Service (MOS),
 - Lectors,
 - Extra-ordinary Ministers of Holy Communion (EMHC),
 - Sacristans,
 - Ensure AOD training is complete and up to date.
 - Writing weekly Prayers of the Faithful.

St. Peter Claver Catholic Community Mission Commission

The Mission Commission is tasked with reaching out to the 40,000 people that live within our parish boundaries, with particular focus on Audience 3 (people of other faith affiliations) and Audience 4 (people of good will). The commission will plan and execute programs and events, with a priority on youth and young adults.

Sample Activities

- Planning/Organizing Events
 - Community Meals
 - Youth and Young Adult Retreats

- Organize Cooperative Events with Schools
 - Loyola High School
 - Cornerstone Schools

- Contact and Foster Relationships with Local Community Organizations
 - Bethune Community
 - Other Faith Communities

St. Peter Claver Catholic Community Stewardship Commission

The Stewardship Commission is tasked with identifying and recruiting time and talent resources for the other commissions and for the teams. The Commission assists interested self-supported individuals to understand their talents and how they might best utilize such talents for the benefit of the parish mission, either by assuming or partnering in an administrative activity, or in an activity as a member of one of the other commissions.

Potential Administration Functions

- **Schedule Weekend Priests** – 1 hour per month.
- **Prepare Weekly Bulletin** – 3-4 hours per week. Requires editor and co-editor.
- **Collection Counting/Deposit** – 2-3 hours per week, with teams of 2 working on a rotating weeks basis based on number of counters.
- **Collection Recording** – 1-2 hours per week.
- **Mass/Event Live-streaming** – Time commitment is the time of the Mass or special event.
- **Web Management** – 1-2 hours per week.
- **Social Media Management** – 1-2 hours per week.