

dawlish-gardensociety.uk



Dawlish Flower, Produce & Crafts Show

Saturday August 13th 2022

'The Strand Centre' Dawlish

Open from 1pm till 4pm

Prize Giving and Raffle Draw at 4pm

Admission: **50p**
Children **Free**



Park Road Pets

Your Local Pet Shop

- For all your **Pet Needs**
- Large range of **Garden Supplies**
- **Friendly, Helpful Staff**

OPENING TIMES
Mon - Fri 9 - 5.00
Sat 9 - 1



28 Park Road, Dawlish
Tel: **01626 863497**



FOR ALL YOUR LOCAL PRODUCE
OPEN 7 DAYS A WEEK

- Quality Fruit, Veg and Salad
- Local Cheese and Langage Farm Creams
- Hogs Bottom *Award Winning Preserves*
- Otter Vale *Gold Award Winning Chutneys*

Telephone: 01626 88964
9 Strand, Dawlish, EX7 9PS

M&D HIRE

AVAILABLE TO HIRE

Diggers • Dumpers • Rollers • Plate Compactors
Disk Cutters • Breakers • Sanders • Scaffold Towers
Plus many more items in stock

ALL GROUNDWORKS LINDERTAKEN

Fencing • Decking • Patios • Garden Walls
Turfing • Landscape Gardening
Block Pave Driveways

SUPPLY - REPAIR - SHARPEN - SERVICE **ALL YOUR GARDEN EQUIPMENT**

Ranging from ride on lawn mowers
down to a set of shears



M & D Hire, Unit 11 Shutterton Industrial Estate, Dawlish, EX7 0NH
01626 863175 www.mdhire.co.uk



BRUNSWICK **• BARBERS •**

TRADITIONAL **BARBER SHOP**

CALL FOR **APPOINTMENT**

CHRIS: 07792 298475

GARY: 07515 430099



Could this be you in 2022?

See inside back cover for 2022 events
Correct at time of going to press, please check monthly posters
in town for any changes to speakers

Acknowledgements

Hays Travel ~ for collecting Entry Forms
Mr. Dave Chattock ~ for Sponsoring the Quiz
Mr M Cockram ~ for Sponsoring the Children's & Art Classes
Mr R Sulch ~ for Sponsoring the Handicraft Classes

PLEASE SUPPORT OUR ADVERTISERS





HAROLD FOSTER CUP

SECTION A - VEGETABLES

*If known, please add variety to green card
Plate supplied*

ENTRY
50p

1. 5 Large Tomatoes - any variety max 75mm diameter
2. 5 Medium Tomatoes - any variety max 60mm diameter
3. 5 Small Tomatoes - any variety max 35mm diameter
4. 3 Onions - **NOT** skinned to the green, tops tied
5. 6 Shallots - **NOT** skinned to the green, tops tied
6. 4 Carrots - tops trimmed to 75mm
7. 1 Cucumber - any variety
8. 4 Pods of Peas - any variety, stalks left on
9. 4 Sticks of Runner Beans - any variety, stalks left on
10. 4 Sticks of French Beans - any variety, stalks left on
11. 3 Potatoes - any variety
12. 3 Courgettes - any variety (max length 150mm or 75mm dia if round)
13. 4 Stems of Different Herbs (with label listing names)
14. 3 Same Vegetables - not listed above.
15. 5 Salad items from this list - Tomato, Beetroot, Radish, Spring Onion, Carrot, Mushroom, Pepper, Lettuce, Stick of Celery or Cucumber
16. 4 Sticks of Rhubarb - leaves trimmed to 75mm



SECTION B - FRUIT

If known, please add variety to green card

ENTRY
50p

Plate supplied (if bunches of fruit i.e., currants, then 3 bunches per plate)

17. 3 Different Fruits - any variety
18. 3 Same Fruits - any variety

For advice or clarification on exhibiting - please call show secretary

SECTION C ~ TINA SMITH PRIZE - £10 TO BEST IN EACH CLASS

20. Largest Sunflower Head
21. Silver or Purple Leaved Pot Plant - Pot not exceeding 6"/15cm

ENTRY
50p

HOME Kitchen

Licensed with a large selection of gluten free meals



2 Piermont Place
Dawlish
EX7 9PQ
01626 895192

www.homekitchendawlish.co.uk

Strandz Hair and Beauty

38 Park Rd, Dawlish EX7 9LJ

01626 863143

Always Be Glamorous



SOCIETY SILVER CHALLENGE CUP

ENTRY 50p



SECTION D - CUT FLOWERS

Please Note: must be displayed in the Flower Show Vases provided. If known, please add variety to green card

NEW THIS YEAR

£10 PRIZE FOR THE WINNER OF PEOPLES CHOICE FOR THE BEST EXHIBIT IN CLASSES 22-32
Voting papers will be available on the day

- 22. 6 Stems of Annuals - 3 varieties or more
- 23. 1 Stem - any variety of Flower
- 24. 6 Blooms - any variety, must include purple
- 25. 3 Blooms of Dahlias - same group e.g. pompoms, cacti
- 26. 3 Blooms of Gladioli - any variety
- 27. 3 Hydrangeas - any colour or variety
- 28. 6 Perennials - 4 varieties or more
- 29. 6 Stems Sweet Peas - any variety
- 30. 1 Perfumed Rose
- 31. 5 Rose **BLOOMS** - any single stem or floribunda



ENTRY 50p

LADY RAYNER TROPHY

If known, please label variety

- 32. 1 Specimen Rose in Flower Show vase provided



WAIN TROPHY

ENTRY 50p

SECTION E - FUCHSIA BLOOMS

to be shown mounted in a container on black background (not supplied) approx. 4 inches by 6 inches/10 x 15cm i.e margarine tub size

If known, please add variety to green card

- 33. 6 Fuchsia blooms - single - same variety
- 34. 6 Fuchsia blooms - double - same variety



LAMBSHEAD CUP

ENTRY 50p

SECTION F - POT PLANTS

Maximum pot size not to exceed 8 inches/20cm

If known, please add variety to green card

- 35. Begonia - any variety
- 36. Flowering Orchid
- 37. Foliage/Fern/Ornamental Grass
- 38. Flowering Plant - Not orchid
- 39. Succulent
- 40. Cactus






**DART &
PARTNERS**

Established 1971

**Win a £3,000 holiday
voucher on us!**

**Simply instruct us to sell or
let your property by 31st
December 2022 to enter**

In Association With

travel counsellors 

Ts & Cs Apply*

9 Queen Street Dawlish

01626 862057

dawlish@dartandpartners.com

*Promotion open to UK-based private clients, formally instructing Dart & Partners Ltd to market a residential property for sale or let between 11/03/2022 & 31/12/2022. Full Terms & Conditions available at www.dartandpartners.com



STILE FARM FEEDS



- Stockists of all major brands of horse feeds
- Hay, straw, haylage & bedding
- Accessories for horse & rider
- Small holder feed and accessories
- Dog, cat and small animal feed
- Calor gas, coal, logs & kindling
- **5%OFF** next purchase with this advert (excludes loyalty scheme)

Open Monday - Saturday

01626 890001

Starcross, Exeter EX6 8PD





TROPHY FOR JUDGE'S CHOICE 'BEST CACTUS OR SUCCULENT'

entered in SECTION F or G

LESANNE CUP

SECTION G ~ MEMBERS ONLY.

9" plate supplied

Pots not to exceed 8 inches/20cm and

society vases to be used for cut flowers.

If known, please add variety to green card



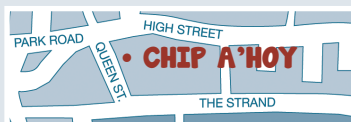
- 41. 1 Flowering Plant
- 42. 1 Foliage Plant
- 43. 1 Stem - Any kind of Flower
- 44. 3 Stems of Foliage - any variety
- 45. 5 Mixed Stems - annual and/or perennial
- 46. 3 Different Fruits
- 47. 3 Different Vegetables

TROPHIES ARE AWARDED ON A POINTS BASIS, SO THE MORE CLASSES YOU ENTER IN ONE SECTION, THE MORE CHANCE YOU HAVE OF WINNING ONE.

CHIP A'HOY



20 Queen Street, Dawlish



OPENING TIMES

Mon	5-8	Thu	4.30-8
Tue	12.00 - 1.30 / 4.30-8	Fri	12.00 - 1.30 / 4.30-8
Wed	12.00 - 1.30 / 4.30-8	Sat	12.00 - 1.30 / 4.30-8





CHILDREN'S CUP

SECTION H ~ CHILDREN'S CLASSES

3 to 7 years of age

ROSETTES AWARDED IF PLACED

1ST, 2ND, 3RD or 4TH

£10 PRIZE FOR BEST ENTRY IN CLASSES 48-51

SPONSORED BY MR M COCKRAM

- 48. Painting of The Queen (Max size A4)
- 49. Hand made platinum colour crown
- 50. Something made from a recycled plastic bottle
- 51. Animal made from fruit or veg



MRS. LEE MEMORIAL CUP

SECTION I ~ CHILDREN'S CLASSES

8 to 16 years of age

ROSETTES AWARDED IF PLACED 1ST, 2ND, 3RD or 4TH

£10 PRIZE FOR BEST ENTRY IN CLASSES 52-55

SPONSORED BY MR M COCKRAM

- 52. Painting of The Queen (Max size A4)
- 53. Hand painted pebble
- 54. Something made from a recycled plastic bottle
- 55. 2 metre length of Jubilee bunting



COOKERY ~ ROSETTE CLASS

SECTION J ~ FOR CHILDREN ONLY

ROSETTES AWARDED IF PLACED 1ST, 2ND, 3RD or 4TH

- 56. 3 Rice Krispie / Cornflake Cakes (5 - 8 years of age)
- 57. 3 Flapjacks (9 - 12 years of age)
- 58. 3 Cup Cakes (13 - 16 years of age)

CHILDREN CAN ENTER ALL SECTIONS, NOT ONLY H, I and J

See Rule 14 regarding photographing of exhibitors

THE HILDA MARCHANT MEMORIAL SHIELD

*For Best Children's Exhibit (under 17 years)
in Sections N and O*



ROSEMARY SMITH CUP

SECTION K - COOKERY

Classes 59 - 63; Preserves - date of making
to be shown on label



ENTRY
50p

**COOKERY ITEMS ARE BEST
BROUGHT TO THE SHOW ON
SATURDAY MORNING AS
THEY MAY DETERIORATE
OVERNIGHT**

59. 1 Pot of Jam (any variety)
60. 1 Pot of Marmalade (any variety)
61. 1 pot of Jelly (any variety)
62. 1 Pot of Chutney (any variety)
63. 1 Pot of Pickles (any variety)
64. 1 White or Brown Loaf (any size) HAND MADE
65. 1 White or Brown Loaf (any size) MACHINE MADE
66. Savoury Quiche (please label main ingredients)
67. 3 Flapjacks
68. 1 Victoria Sponge (see ingredients below)
69. 1 Ginger Cake
70. 3 Queen Biscuits (see ingredients below)
71. 1 Carrot Cake

Queen Biscuits (Makes 24):

225g (8oz) Butter
225g (8oz) Sugar
3 Eggs
340g (12oz) Flour
225g (8oz) Currants
A few drops of almond extract

METHOD

- Cream the butter and add the sugar. Mix well, before adding the sifted flour and eggs.
- Mix until light and fluffy and tip in the currants and almond extract.
- Using a tablespoon, drop equal quantities of the mixture onto a greased baking sheet. Don't put them too close together as the mixture will settle and expand outwards - you'll end up with a cross between a cookie and a cake.
- Bake at Gas 4, 350F/180C/170 Fan for about 10 minutes or until firm to the touch, and cool on a rack.

Victoria Sponge:

175g (6oz) soft Butter
175g (6oz) Caster Sugar,
175g (6oz) SR Flour
3 large Eggs,
A few drops vanilla essence,
Strawberry jam filling and caster sugar to finish.

METHOD

- Cream butter and sugar together until fluffy, add beaten eggs a little at a time so as not to curdle.
- Add the essence, fold in the sifted flour with metal spoon to a dropping consistency.
- Divide mixture between 2 x 8"/20cm tins.
- Oven: Gas mark 3, 325F/170C/160 Fan for 25 - 30 mins.
- Sandwich sponges together with strawberry jam, finish with caster sugar on top.



Peter Gorman

**PAINTER &
DECORATOR**

INTERIOR & EXTERIOR
FULLY INSURED

**07501
318630**

CRAFTERS

— OF DAWLISH —

Offering unique gifts made by local crafters
as well as wool, haberdashery and craft supplies

We also offer a sewing/alterations service



- Jewellery
- Gift Boxes
- Cushions
- Knitted Toys
- Mobiles
- Hand Crafted Cards
- Knitted/Crocheted Garments
- Artwork
- Bunting
- Giftware
- Souvenirs and more

**Come and find unique work by
our local crafters**

17 Queen Street EX9HB

 @CraftersOfDawlish

The no.1 place to eat in
Dawlish as rated on
Tripadvisor!

@le cygne dawlish

le cygne

breakfast · brunch · lunch

11 The Strand
Dawlish
EX7 9PS
07534 144745

Takeaways, cheese,
wine, hampers,
gifts & local produce
available in our
brand new delicatessen!

Le Cygnerie
opening this May at
No.12 The Strand


Studio Beauty

Brow and Lash Artistry

Lyndsey Rhianne Jolly

m: 07949 272648

1a Piermont Place · Dawlish · EX7 9PQ

 follow me on facebook



THE SILVER BOWL

SECTION L ~ ART

ENTRY
50p



Pictures can be framed or unframed but must stand up on display boards.

See Rule 5

ENTRIES CAN BE ANY MEDIUM, BUT PLEASE WRITE ON GREEN EXHIBITOR CARD WHICH MEDIA ARE USED

£10 PRIZE FOR BEST ENTRY IN CLASSES 73-76

SPONSORED BY MR M COCKRAM

- 73. Jubilee
- 74. Flowers
- 75. Seascape
- 76. Portrait

THE TIMARU CUP

SECTION M ~ PHOTOGRAPHY

ENTRY
50p

*All exhibits **MUST** be mounted with no more than a 1 inch border.*

Prints not to exceed 7 x 5" 18x13cm

(with mount not to exceed 9 x 7" 23x18cm)

See Rule 5

- 77. Celebrating the Jubilee
- 78. Dawlish Brook
- 79. Dawlish Sea Wall
- 80. Fungi
- 81. Single Bloom



CUPS AND TROPHIES ARE HELD FROM SHOW DATE TO END OF JUNE THE FOLLOWING YEAR, PRO-RATA IF SHARED

THE HORSHAM CUP

SECTION N ~ HANDICRAFTS

See Rule 5

ENTRY
50p

- 82. An Item made by person with special needs.
Made from any medium





have a great
HAIR DAY

Amara
Become Beautiful by Hayley



Ann Smith was trained in London and has over 25 years continuous hairdressing experience.

She is fully qualified in all aspects of hairdressing including Advance Cutting, Colouring & Hair Up.



Ann is pleased and very proud to be offering all hair services from her fully equipped salon in Starcross, offering a personalised visit in a calm, professional environment.

Ann - 07958 464842
Gift Vouchers Available



Hayley has worked as a beauty therapist for 16 years mostly in Dawlish.

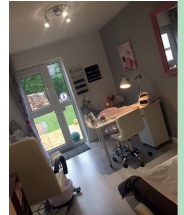
She is fully qualified NVQ2 & NVQ3 and works from her modern private beauty room - including FREE parking.

Hayley offers a wide range of treatments, using top quality products.

Visit her website for info -
www.amarabeautybyhayley.com

07713 183684
01626 682971

Mobile Appointments Available
Gift Vouchers Available



Hairday and Amara join together to offer a bespoke wedding and prom package either in the salon or in the comfort of your own home

Daisy's Tea Room

Traditional Tea Room

Selection of Teas & Coffees
Cream Teas - High Teas
Variety of Cakes & Light Meals

Why not try our famous chocolate cream tea?

25 THE STRAND, DAWLISH EX7 9PS
email: daisystearoom@outlook.com





THE LADY HOARE CUP

SECTION O ~ HANDICRAFTS

See Rule 5



- 83. Hand Knitted Baby Clothing (any ply)
- 84. Hand Knitted Adult Clothing (any ply)
- 85. Soft Toy (any medium)
- 86. Crocheted Article not Blanket or Shawl
- 87. Hand Made Blanket or Shawl
- 88. An Item made from Patchwork

THE SUE INNOCENT ASH MEMORIAL BOWL

Embroidery (framed or unframed)

See Rule 5



- 89. Cushion with crown pattern - any medium
- 90. Cross Stitch/Embroidery/Tapestry Sampler

THE HILARY PUDNER CUP



- 91. Open Class (Any Handicraft not previously listed) see Rule 5

THE HILDEGARD BROWNE MEMORIAL CUP

For the best exhibit made using 'NEEDLES, HOOKS or SHUTTLES
in section N and O

**£10 PRIZE FOR BEST ENTRY IN CLASSES 83 - 91
SPONSORED IN MEMORY OF KATHERINE SULCH**

THE HARTNELL CHALLENGE CUP

SECTION P ~ FLORAL ART

No height restrictions but exhibits must fit inside marked sections in classes,
no floral foam to be used.



- 92. A Posy from the Garden (15 x 15cm)
- 93. A Display in colours of Ukrainian Flag (Blue & Yellow) (40 x 40cm)
- 94. A Display to include a sunflower (40 x 40cm)
- 95. A Table Centre celebrating the Platinum Jubilee (30 x 30cm)



Frank's Frying *in* *Dawlish*

GOLDEN AGE OF FISH & CHIPS

01626 867234

3 Piermont Place, Dawlish, Devon

MEMORIES

FLORIST • GREETING CARDS
BALLOONS • GIFTS

Tel: 07506 884796

13 Park Road, Dawlish EX7 9LJ

The Virtual Dawlish in Bloom



Garden Competition 2022

Gardens will be judged via digital photo

Categories: front garden back garden
window box container plants.



Entry details on the
Dawlish Town Council website:
www.dawlish.gov.uk

Enquiries to: alison.foden@dawlish.gov.uk

Entry forms closing date 30th June 2022

With support from
Dawlish Garden Society



dawlish-gardensociety.uk

ENTRY FORM

Please **Circle** class number(s) entered

1	2	3	4	5	6	7	8	9	10
11	12	13	14	15	16	17	18	19	20
21	22	23	24	25	26	27	28	29	30
31	32	33	34	35	36	37	38	39	40
41	42	43	44	45	46	47	48	49	50
51	52	53	54	55	56	57	58	59	60
61	62	63	64	65	66	67	68	69	70
71	72	23	74	75	76	77	78	79	80
81	82	83	84	85	86	87	88	89	90
91	92	93	94	95	96	97	98	99	100

..... **Entries @ 50p =**

PLEASE CHECK RULES BEFORE ENTERING

50p per class (not Section) unless marked **FREE**

All entry forms must be placed in a **sealed envelope**,

with correct fees and handed to:

HAYS TRAVEL, THE STRAND

between the dates published in the programme

Please Print Clearly

Name:.....

Address:.....

Tel No.....Age of child.....

Email:.....

‘SPECIAL NEEDS’

If your exhibit(s) is/are eligible for the ‘EDWINS AWARD’ please also write class number(s) here

Rules of the Show

1. Exhibits in all classes must be exhibitor's bona-fide produce (except in Section P Floral art classes & Sections H & I children's classes).
2. The Committee reserves the right to visit and inspect the gardens of exhibitors during the week prior to the show and the 2 days following the show.
3. The show is open to amateur exhibitors only, no professional gardeners, photographers etc
4. No exhibitor shall enter more than **1 exhibit** in any numbered class.
5. **No exhibit to have previously been shown at this society's show.**
6. Exhibitors must provide all the necessary plates, vases etc (unless otherwise stated in the schedule) and are responsible for attaching class cards to the exhibits and placing these in the proper section and class. Cards to be folded so name of exhibitor is unseen by judge.
7. Any prize may be withheld if the exhibits are considered unworthy.
8. The decision of the Judges will be final.
9. The Committee will take all reasonable care of exhibits etc, but will not be responsible for any loss or damage.
10. No prize cards or exhibits to be removed from the stands until **4pm**
11. All exhibits must be collected by **5pm**
12. Exhibits must be staged between **7.30am and 9am** on the day of the show, OR between **6.45pm and 8pm** the previous evening.
13. Once placed by the exhibitor **no exhibit may be handled or moved by anyone other than by the Show Secretary, Stewards or Show Judges.**
Please ask for help in placing your exhibit if unsure.
14. **By entering the show and signing the entry form you give permission for photographs of yourself or your children to be used for publicity purposes, i.e. web site or press.**
15. Entries accepted from **Mon 11th July to Noon Wed 10th August 2022**

**ANY EXHIBITS OR ITEMS NOT COLLECTED BY 5PM WILL BE
DISPOSED OF BY THE SOCIETY.**

**ALL CUP/TROPHY WINNERS MUST HAVE INSURANCE COVERAGE FOR CUPS WHILE
IN THEIR POSSESSION. YOU WILL BE CONTACTED IN JUNE
REGARDING RETURN OF CUPS/TROPHIES**

**'EDWIN'S AWARD' TO BE PRESENTED TO BEST EXHIBIT IN SHOW FROM AN
EXHIBITOR WITH SPECIAL NEEDS. Please indicate on entry form if eligible.**

SHOW SECRETARIES

JUNE CASSIDY (01626) 439076 • SUE THOMPSON (01626) 889122
e-mail junecassidy1@icloud.com OR suesampson1953@icloud.com
(calls between 10.00 am – 7 pm only please)

Nº / 1 CAFE

Queen St, Dawlish

Annie's

Tea Room

15 Brunswick Place | 07894 717970



We can provide transport for
Hospital / Medical Appointments,
Groups or Individuals

16 Seater Minibuses Available

Shopmobility and Ring & Ride
Service

All Vehicles are Wheelchair
Accessible

01626 888890

Barton Hill Car Park, Dawlish, Devon EX7 9QH
office@etcta.co.uk www.dawlish-mobility.co.uk

Charity No. 1168994 Company No: 10250030



STICKY RICE

TAKE AWAY &
RESTAURANT

01626 437343

2 The Strand, Dawlish
stickyriceonline.com



DAWLISH GARDEN SOCIETY
Meets at THE MANOR HOUSE,
OLD TOWN STREET, DAWLISH EX7 9AP
Thursday evening at 7.15 pm
(unless otherwise stated)

MAY 26 2022

Lukesland Gardens - Lorna Howell

JUNE 30 2022

Wildlife Friendly Gardening - Ben Candlin of Adventurous Plants

SEPTEMBER 29 2022

Hedgehogs - In Need of Your Help - Stephen Prowles

OCTOBER 27 2022

Holly & Ivy - Roy Cheek

NOVEMBER 24 2022

**The Best of Friends - Companion Planting & Other
Natural Gardening Methods - Becca Flintham**

SPECIAL EVENTS

SATURDAY, MAY 14 2022

Plant Sale, Front of Strand Centre

FRIDAY, JULY 15 2022

RHS Rosemoor

SATURDAY, AUGUST 13 2022

Flower Show, Strand Centre

NEW MEMBERS AND VISITORS ALWAYS WELCOME

Membership £6.00 per year

£1 per meeting, £2 for visitors, refreshments and raffle included

Chairman: June Cassidy 01626 439076

Secretary: Suzanne Jones 01626 889184

www.dawlish-gardensociety.uk

Quality

Professional

Creative

Signature

Hair & Beauty

7 Queen Street, Dawlish, Devon EX7 9HB | TEL: 01626 865888
www.signaturelook.co.uk | info@signaturelook.co.uk

OPENING HOURS

Mon to Fri 9-5 / Late Night Thursday / Sat 9-4

Now celebrating our 10th year in business!

From two part time hairdressers and one part time beautician to an experienced friendly professional team of 9.

We sincerely thank all our customers for their loyal and continued support over the years.

We are a friendly professional experienced team and confidently welcome you safely to the salon for all your hair and beauty needs with the added bonus of Dawlish's only sunbed!

We only use quality Paul Mitchell hair care products (NO ANIMAL TESTING) and skin care from Dermalogica

Our salon is bright and welcoming and we look forward to your visit

Your health and safety is our priority and of course excellent service!

PAUL MITCHELL

ghd

KeraStraight

galish

dermalogica

Creative

Professional

Quality

• Hair • Manicures • Pedicures • Waxing • Facials

• Eyelashes/ Extensions • Henna brows • Brows • Massage • Ear Piercing

• Sunbed • Spray Tan • Hair Extensions • Nano Microblading

We continue to be covid safe, so please do not be afraid to come and see us, as we do offer a bespoke one to one appointments.