



[dawlisch-gardensociety.uk](http://dawlisch-gardensociety.uk)

# Summer Show

Flowers, Produce, Art and Crafts

Incorporating

“Dawlisch in Bloom” photo competition

**Saturday August 15th 2026**

Open from 1pm

‘The Strand Centre’ Dawlish

Prize Giving and Raffle Draw at 4pm

**Admission Free**



# **DAWLISH BUILDING SUPPLIES**



- **PLUMBING • ELECTRICAL**
- **COMPOSITES & TIMBER**
- **DECKING • PATIO SLABS**
- **SLEEPERS • FENCE PANELS**
- **TIMBER • BLOCK PAVING**
  - **BAGGED MATERIAL**  
(SMALL & DUMPY)
- **PAINT MIXING SERVICES**
- **TOOLS**

**CRANE OFFLOAD DELIVERY  
SERVICE AVAILABLE**

**OPEN 6 DAYS A WEEK**

**MONDAY - FRIDAY**

**7am - 5.30pm**

**SATURDAY**

**8am - 2pm**

**22A Park Road | Dawlish | EX7 9LH | 01626 863470**

**office@dawlishbuildingsupplies.co.uk**

**[www.dawlishbuildingsupplies.co.uk](http://www.dawlishbuildingsupplies.co.uk)**



# *Could this be you in 2026?*

See inside back cover for 2026 events

Correct at time of going to press – please check our website  
**dawlish-gardensociety.uk** for any changes to stated programme

Trophies and Prizes are awarded on a points basis, the more classes entered,  
the better chance you have of winning.

## *Acknowledgements*

Hays Travel ~ for collecting Entry Forms  
Claremont Manor ~ for Sponsoring Dawlish in Bloom  
Dawlish Painters – for Sponsoring the Art and Children's Classes  
Mr R Sulch ~ for Sponsoring the Handicraft Classes

**PLEASE SUPPORT OUR ADVERTISERS**

Entry forms can also be printed from  
our website – dawlish-gardensociety.uk

## ENTRY FORM

Please **Circle** class number(s) entered

|    |    |    |    |    |    |    |    |    |     |
|----|----|----|----|----|----|----|----|----|-----|
| 1  | 2  | 3  | 4  | 5  | 6  | 7  | 8  | 9  | 10  |
| 11 | 12 | 13 | 14 | 15 | 16 | 17 | 18 | 19 | 20  |
| 21 | 22 | 23 | 24 | 25 | 26 | 27 | 28 | 29 | 30  |
| 31 | 32 | 33 | 34 | 35 | 36 | 37 | 38 | 39 | 40  |
| 41 | 42 | 43 | 44 | 45 | 46 | 47 | 48 | 49 | 50  |
| 51 | 52 | 53 | 54 | 55 | 56 | 57 | 58 | 59 | 60  |
| 61 | 62 | 63 | 64 | 65 | 66 | 67 | 68 | 69 | 70  |
| 71 | 72 | 73 | 74 | 75 | 76 | 77 | 78 | 79 | 80  |
| 81 | 82 | 83 | 84 | 85 | 86 | 87 | 88 | 89 | 90  |
| 91 | 92 | 93 | 94 | 95 | 96 | 97 | 98 | 99 | 100 |

..... **Entries @ 50p** =

### PLEASE CHECK RULES BEFORE ENTERING

**50p per class (not Section) unless marked FREE**

All entry forms must be placed in a **sealed envelope**,

**with correct fees** and handed to:

**HAYS TRAVEL, THE STRAND**

between the dates published in the programme

**Please Print Clearly**

Name:.....

Address:.....

Tel No.....Age of child.....

Email:.....

'SPECIAL NEEDS'

If your exhibit(s) is/are eligible for the 'EDWINS AWARD' please  
also write class number(s) here .....

# Rules of the Show

1. Exhibits in all classes must be exhibitor's bona-fide produce (except in Section P Floral art classes & Sections H & I children's classes).
2. The show is open to amateur exhibitors only, no professional gardeners, photographers etc
3. No exhibitor shall enter more than **1 exhibit** in any numbered class.
4. **No exhibit to have previously been shown at this society's show.**
5. Exhibitors must provide all the necessary plates, vases etc (unless otherwise stated in the schedule) and are responsible for attaching class cards to the exhibits and placing these in the proper section and class. Cards to be folded so name of exhibitor is unseen by judge.
6. Any prize may be withheld if the exhibits are considered unworthy.
7. All classes are blind judged by professional people not connected to DGS. The judges decision is final. Points are awarded as follows : 1st - 4points, 2nd - 3points, 3rd - 2points, 4th - 1 point.
8. The Committee will take all reasonable care of exhibits etc, but will not be responsible for any loss or damage.
9. No prize cards or exhibits to be removed from the hall until after prize giving
10. All exhibits **MUST** be collected by **5pm** any items not collected will then be disposed of by the society.
11. Exhibits may be staged on Friday evening between **7pm and 8 pm** or **7.30am to 9am** on the day of the show.
12. Once placed by the exhibitor **no exhibit may be handled or moved by anyone other than by the Show Secretary, Stewards or Show Judges.**  
Please ask for help in placing your exhibit if unsure.
13. **By entering the show you give permission for photographs of yourself or your children to be used for publicity purposes, i.e. website or press.**
14. Entries accepted from **Monday 6th July to NOON Tuesday 11th August**

**For advice or clarification on exhibiting there is a booklet on the website [dawlsh-gardensociety.uk](http://dawlsh-gardensociety.uk) - " Tips for Showing at the Summer Show "**

**ALL CUP/TROPHY WINNERS MUST HAVE INSURANCE COVERAGE FOR CUPS WHILE IN THEIR POSSESSION. YOU WILL BE CONTACTED IN JUNE REGARDING RETURN OF CUPS/TROPHIES PLEASE DO NOT POLISH**

**'EDWIN'S AWARD' TO BE PRESENTED TO BEST EXHIBIT IN SHOW FROM AN EXHIBITOR WITH SPECIAL NEEDS. Please indicate on entry form if eligible.**

## SHOW SECRETARIES

JUNE CASSIDY 07486 370880 • SUE THOMPSON (01626) 889122  
e-mail [junecassidy1@icloud.com](mailto:junecassidy1@icloud.com) OR [suesampson1953@icloud.com](mailto:suesampson1953@icloud.com)  
(calls between 10.00 am – 7 pm only please)  
(on show day and Friday before please use 07774 166347)



ENTRY  
50p

## HAROLD FOSTER CUP

### SECTION A ~ VEGETABLES

*If known, please add variety to green card  
Plate supplied*

1. 3 Large Tomatoes – any variety **MIN** 75mm diameter with calyx
2. 5 Medium Tomatoes – any variety **MAX** 60mm diameter with calyx
3. 5 Small Tomatoes – any variety **MAX** 35mm diameter with calyx
4. 3 Onions – **NOT** skinned to the green, tops tied
5. 6 Shallots – **NOT** skinned to the green, tops tied
6. 1 Cucumber – any variety
7. 3 Peppers – any variety
8. 3 Chillies – any variety
9. 4 Sticks of Runner Beans – any variety, stalks left on
10. 4 Sticks of French Beans – any variety, stalks left on
11. 3 Potatoes – any variety
12. 2 Courgettes – any variety (max length 150mm or 75mm dia if round )
13. 4 Stems of Different Herbs (with label listing names)
14. 4 Sticks of Rhubarb – leaves trimmed to 75mm
15. 3 Same Vegetables – not listed above
16. 3 Different Vegetables – not listed above

ENTRY  
50p

### SECTION B ~ FRUIT

*If known, please add variety to green card*

Plate supplied (if bunches of fruit i.e., currants, then 3 bunches per plate)

17. 5 Same Berries – any variety with stalk
18. 3 Apples – any variety
19. 3 Pears – any variety
20. 3 Same Fruits – not listed above
21. 3 Different Fruits – not listed above

ENTRY  
50p

### SECTION C

## DAWLISH IN BLOOM GARDEN PHOTO COMPETITION

**PHOTOGRAPHS MUST BE TAKEN IN 2025**  
**PEOPLES' CHOICE, £25 PRIZE FOR THE WINNER**  
**IN EACH CLASS 49 – 50**  
**SPONSORED BY CLAREMONT MANOR**

49. My Garden
50. My Hanging Basket, Window Box or Single Container

*Prints not to exceed 7 x 5 inches / 18x13cm*





## SOCIETY SILVER CHALLENGE CUP



### SECTION D ~ CUT FLOWERS

*Please Note: must be displayed in the Flower Show Vases provided. If known, please add variety to green exhibitors card*

- 22. 6 Stems of Sweet Peas – any variety
- 23. 6 Stems of Annuals – 3 varieties or more
- 24. 6 Stems of mixed garden flowers
- 25. 6 Stems of Perennials
- 26. 3 Stems of Salvias
- 27. 3 Blooms of Hydrangeas – any colour or variety
- 28. 5 Rose Blooms – stems can be single or multihead
- 29. 1 Stem – any variety of flower
- 30. 1 Perfumed Rose
- 31. 3 Blooms of Dahlias – same group e.g. pompom, cacti

**NEW THIS YEAR Class 31: Sponsored by Cornish Dahlia Society, winner receives a Cornish Dahlia Society Rosette and 1 year's free membership to that society**



## LADY RAYNER TROPHY

*Flower Show vase provided  
If known, please label variety*

- 32. 1 Specimen Rose



## WAIN TROPHY

### SECTION E ~ FUCHSIA BLOOMS

*to be shown mounted in a container on black background  
(not supplied) approx. 4 inches by 6 inches/10 x 15cm  
i.e margarine tub size*

**NO FLORAL FOAM TO BE USED**

*If known, please add variety to green card*

- 33. 6 Fuchsia blooms – single – same variety
- 34. 6 Fuchsia blooms – double / semi double – same variety



## LAMBSHEAD CUP

### SECTION F ~ POTTED HOUSEPLANTS

*Maximum pot size not to exceed 8 inches/20cm  
Minimum ownership 6 months*

- 35. Begonia – any variety
- 36. Flowering Orchid
- 37. Foliage/Fern/Ornamental Grass
- 38. Flowering Plant – Not orchid
- 39. Succulent
- 40. Cactus

# Park Road



# Pets

## Your Local Pet Shop

- For all your **Pet Needs**
- Large range of **Garden Supplies**
- **Friendly, Helpful Staff**

**OPENING TIMES**  
Mon - Fri 9 - 5.00  
Sat 9 - 1



28 Park Road, Dawlish  
Tel: **01626 863497**

# The VEGGY Box

**THE STRAND  
DAWLISH AND BANK  
STREET TEIGNMOUTH**

# BRUNSWICK • BARBERS •

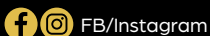
Chris  
**07792 298475**

Gary  
**07515 430099**

Oakley  
**07496 278244**

## Walk-Ins Available

11 Brunswick Place  
Dawlish EX7 9PB  
(Next door to Brunswick Arms)



All aspects of  
tree works undertaken

**FENCING  
HEDGE WORKS  
STUMP REMOVAL**

Contact  
**07776 215315 or 01626 888989**  
for a free quote

*Fully qualified and insured  
Over 20 years established*

[www.stumpout.co.uk](http://www.stumpout.co.uk)



**TROPHY FOR  
JUDGE'S CHOICE  
'BEST CACTUS OR SUCCULENT'**

entered in SECTION F or G

**LESANNE CUP**

**SECTION G ~ MEMBERS ONLY.**

Plate supplied

*Pots not to exceed 8 inches/20cm and  
society vases to be used for cut flowers.*

*If known, please add variety to green card*



41. 1 Flowering Plant
42. 1 Foliage Plant
43. 1 Stem – Any kind of Flower
44. 3 Stems of Foliage – any variety
45. 5 Mixed Stems – annual and/or perennial
46. 3 Different Fruits
47. 3 Different Vegetables

**TROPHIES AND PRIZES ARE AWARDED ON A POINTS BASIS – 1st – 4points,  
2nd – 3points, 3rd – 2points, 4th – 1 point. THE MORE CLASSES YOU ENTER,  
THE BETTER CHANCE YOU HAVE OF WINNING.**

# Daisy's Tea Room

## Traditional Tea Room

**Selection of Teas & Coffees**

**Cream Teas - High Teas**

**Variety of Cakes & Light Meals**

*Why not try our famous chocolate cream tea?*

25 THE STRAND, DAWLISH EX7 9PS  
email: daisystearoom@outlook.com







## CHILDREN'S CUP

ENTRY  
FREE

### SECTION H ~ CHILDREN'S CLASSES

3 to 7 years of age

**ROSETTES AWARDED FOR 1ST, 2ND, 3RD and 4TH**

**£5 PRIZE FOR BEST ENTRY**

**SPONSORED BY DAWLISH PAINTERS**

51. Picture of an Animal by handprint, fingerprint or brush
52. Craft an item from a Kit – See Crafters advert below for info

ENTRY  
FREE

## MRS. LEE MEMORIAL CUP

### SECTION I ~ CHILDREN'S CLASSES

8 to 16 years of age

**ROSETTES AWARDED FOR 1ST, 2ND, 3RD and 4TH**

**£5 PRIZE FOR BEST ENTRY**

**SPONSORED BY DAWLISH PAINTERS**

53. Make a model of a Laptop or Tablet with a floral screensaver – made from any material
54. Craft an item from a Kit – See Crafters advert below for info

ENTRY  
FREE

## JUNIOR BAKES ~ ROSETTE CLASS

### SECTION J ~ FOR CHILDREN ONLY

5 to 16 years of age

**ROSETTES AWARDED FOR 1ST, 2ND, 3RD and 4TH**

**£5 PRIZE FOR BEST ENTRY**

**SPONSORED BY DAWLISH PAINTERS**

56. 3 Small cakes in cases

**SEE RULE 13 REGARDING PHOTOGRAPHING OF EXHIBITORS**

**CHILDREN CAN ENTER ALL SECTIONS, NOT ONLY H, I and J**

## THE HILDA MARCHANT MEMORIAL SHIELD

*For Best Children's Exhibit (under 17 years)*

*in Sections N and O*

Come and find unique work by  
our local crafters



## CRAFTERS — OF DAWLISH —

Offering unique gifts made by local crafters  
as well as wool, haberdashery and craft supplies

We also offer a sewing/alterations service

- Jewellery
- Gift Boxes
- Cushions
- Knitted Toys
- Mobiles
- Hand Crafted Cards
- Knitted/Crocheted Garments
- Artwork
- Bunting
- Giftware
- Souvenirs and more

17 Queen Street EX99HB

 @CraftersOfDawlish

## SECTION K ~ BAKES & PRESERVES



### ALAN THOMPSON CUP – MEN ONLY

58. 1 Lemon Drizzle Cake



### ROSEMARY SMITH CUP

*Classes 59 – 63; Preserves – date of making to be shown on label*

- 59. 1 Pot of Jam – any variety
- 60. 1 Pot of Marmalade – any variety
- 61. 1 Pot of Jelly – any variety
- 62. 1 Pot of Chutney – any variety
- 63. 1 Pot of Pickles – any variety
- 64. 1 Loaf – any size – machine or handmade
- 65. 1 Flavoured Bread Item – eg Focaccia, Walnut
- 66. 3 Scones – sweet or savoury, please label
- 67. 3 Decorated Cup Cakes
- 68. 3 Slices of a Traybake
- 69. 1 Fruit Drizzle Cake eg Orange, Citrus
- 70. 1 Victoria Sponge – see recipe below
- 72. 1 Cake made with any fruits, please label

**BAKED ITEMS ARE BEST  
BROUGHT TO THE SHOW ON  
SATURDAY MORNING AS  
THEY MAY DETERIORATE  
OVERNIGHT**

#### **Victoria Sponge:**

175g (6oz) Soft Butter  
175g (6oz) Caster Sugar,  
175g (6oz) SR Flour  
3 large Eggs,  
A few drops vanilla essence,  
Strawberry jam filling and caster sugar to finish.

#### **METHOD**

- Cream butter and sugar together until fluffy, add beaten eggs a little at a time so as not to curdle.
- Add the essence, fold in the sifted flour with metal spoon to a dropping consistency.
- Divide mixture between 2 x 8"/20cm tins.
- Oven: Gas mark 3, 325F/170C/160 Fan for 25 – 30 mins.
- Sandwich sponges together with strawberry jam, finish with caster sugar on top.

Quality Creative Professional Creative Quality

# Signature

Hair & Beauty

7 Queen Street, Dawlish EX7 9HB  
 TEL: 01626 865888  
[www.signaturelook.co.uk](http://www.signaturelook.co.uk)  
[info@signaturelook.co.uk](mailto:info@signaturelook.co.uk)


**OPENING HOURS**  
 Tuesday to Friday 9-5  
 Late Night Thursday  
 Saturday 9-4

Proud to be a fundraiser for  
**Saving Pound Dogs Cyprus (SPDC)**   
 Any small change donation gratefully accepted in salon

 **dermalogica**  
**PAUL MITCHELL** ghd keraStraight

• Hair • Manicures • Pedicures • Waxing • Facials  
 • Eyelashes/ Extensions • Brows • Massage  
 • Ear Piercing • Sunbed • Spray Tan • Hair Extensions

We continue to be covid safe, so please do not be afraid to come and see us, as we do offer a bespoke one to one appointments.



## Your Local One-Stop Sweet Shop


A charming mix of traditional sweets, puzzles, and thoughtful treats for all ages.

- Helium Balloons • Traditional Sweets
- Jigsaw Puzzles • Chocolates


### The Puzzled Sweet Shop

24 The Strand, Dawlish, EX7 9PS  
 07969 615428 | [www.thepuzzledsweetshop.co.uk](http://www.thepuzzledsweetshop.co.uk)


*Perfect for gifts, parties & everyday treats*




# Time for a bigger garden?




**9 Queen Street, Dawlish**  
**01626 862057**  
[dawlish@dartandpartners.com](mailto:dawlish@dartandpartners.com)



**Stuart Copeland**



**Caroline Moore**



**Rob Viner**



## THE SILVER BOWL

### SECTION L ~ ART

*Pictures can be framed or unframed but must stand up on display boards. MAXIMUM SIZE 16 x 12 in / 40x 30 cm*

*See Rule 5*

**ENTRIES CAN BE ANY MEDIUM, BUT PLEASE WRITE ON GREEN EXHIBITOR CARD WHICH MEDIA IS USED**

**£10 PRIZE FOR BEST ENTRY IN CLASSES 73-74**

**SPONSORED BY DAWLISH PAINTERS**



- 73. Still Life
- 74. Boats



## THE TIMARU CUP

### SECTION M ~ PHOTOGRAPHY

*All exhibits **MUST** be mounted with no more than a 1 inch / 2.5cm border.*

*Prints not to exceed 7 x 5 inches / 18x13cm*

*(with mount not to exceed 9 x 7 inches / 23x18cm)*

*See Rule 5*

- 78. Marvellous Machines
- 79. View from a Window
- 80. Historic Building
- 81. Single Bloom with an Insect



## THE HORSHAM CUP

### SECTION N ~ HANDICRAFTS

*See Rule 5*

- 82. An Item made by person with special needs.  
Made from any medium

**CUPS AND TROPHIES ARE HELD FROM SHOW DATE TO END OF JUNE  
THE FOLLOWING YEAR, PRO-RATA IF SHARED  
PLEASE DO NOT CLEAN CUPS**




## HOME *Kitchen*

Licensed with a large selection  
of gluten free meals

2 Piermont Place, Dawlish EX7 9PQ  
01626 895192

[www.homekitchendawlish.co.uk](http://www.homekitchendawlish.co.uk)

**Le Cygne**  
 -Breakfast-  
 -Brunch-  
 -Lunch-  
 Open 10-3  
 Wed-Sun  
 11 The Strand, Dawlish EX79PS  
 T: 07534 144745

Lady's Mile  
 HOLIDAY PARK

Join us for  
**SUNDAY  
 CARVERY**  
 Available 12-4pm

ADULTS | KIDS | NUT | VEG  
 CARVERY | CARVERY | ROAST | CARVERY

Why not add pigs and blankets?  
 Dawlish, Devon, EX7 0LX

Keep up to date with what we have available for day visitors!  
 Scan the QR code for more information

# CHIP A'HOY

20 Queen Street, Dawlish Tel: 863242

**OPEN FOR TAKE AWAY ONLY AT PRESENT**

|                          |     |                       |     |                       |
|--------------------------|-----|-----------------------|-----|-----------------------|
| <b>OPENING<br/>TIMES</b> | Mon | 5-8                   | Thu | 4.30-8                |
|                          | Tue | 12.00 - 1.30 / 4.30-8 | Fri | 12.00 - 1.30 / 4.30-8 |
|                          | Wed | 12.00 - 1.30 / 4.30-8 | Sat | 12.00 - 1.30 / 4.30-8 |



## THE LADY HOARE CUP

### SECTION O ~ HANDICRAFTS

See Rule 4



83. Baby Clothing – any material
84. Hand Knitted Clothing – any age
85. A toy – any medium
86. Crocheted Article not Blanket or Shawl
87. An Item made from Patchwork – **NO** Quilts
88. An item made from Felting
89. An item of Macrame



## THE SUE INNOCENT ASH MEMORIAL BOWL

### Embroidery (framed or unframed)

See Rule 4

90. Cross Stitch, Tapestry, Embroidery or Sampler



## THE HILARY PUDNER CUP

91. Item made from Wood – **NO** Furniture
92. Item of Papercraft including Greetings Card
93. Item of Jewellery
94. Open Class – any Handicraft not listed above

## THE HILDEGARD BROWNE MEMORIAL CUP

£10 PRIZE FOR BEST ENTRY IN CLASSES 83 – 94

SPONSORED IN MEMORY OF KATHERINE SULCH



## THE HARTNELL CHALLENGE CUP

### SECTION P ~ FLORAL ART

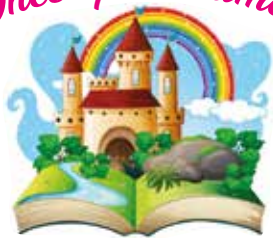
No height restrictions but exhibits must fit inside marked sections for each class.

**MUST** include Fresh and/or Dried plant material, can also include Fruit & Veg

**NO** Artificial Flowers, **NO** Floral Foam to be used

95. A Posy from your Garden – 15 x 15cm
96. Mirror Image – 40 x 40cm
97. Sky, Sea & Shore – 40 x 40cm

“Once upon a time...”



Dawlish celebrates  
**CARNIVAL**

15-21st  
**AUGUST**



Dawlish Gardens Trust  
**Plant Shop**  
and Seasonal Veg  
Open Weekdays  
from 10am-3pm

01626 864307  
admi@dgtdevon.org

Marysfield | Port Road  
Dawlish | EX7 0NX

[www.dgtdevon.org](http://www.dgtdevon.org)

**The  
Strand  
Centre**



**Inspire  
...Cafe...**

Visit  
**Hub Store Dawlish**

For the best selection  
of quality donated items



• Clothes •  
• Accessories •



• Homeware •  
• Vintage •



Affordable  
Furniture & Appliances



6 The Strand Dawlish  
EX7 9PS

Enjoy life in retirement! Our guiding principle at Dawlish and District u3a is to improve our members' quality of life through Learning, Laughing and Living. Visit our website to find out more about our monthly meetings, social events and wide range of interest groups. There is something for everyone. Come along to one of our monthly meetings. Guests are always welcome!

## New Members Welcome



[www.u3a.dawlish.info](http://www.u3a.dawlish.info)



### VOLUNTEER for Community Transport



Make a difference in your local community

**VOLUNTEER  
MINIBUS  
DRIVERS REQUIRED**

**VOLUNTEER  
CAR  
DRIVERS REQUIRED**

- Drive our vehicles
- Give your time - as little or as often as you can
- If driving isn't for you, there are many other opportunities

For more information please contact, or call in  
**Dawlish Community Transport**  
**01626 888890**

Email: [admin@dawlishcommunitytransport.co.uk](mailto:admin@dawlishcommunitytransport.co.uk)  
[www.dawlish-mobility.co.uk](http://www.dawlish-mobility.co.uk)  
or find us on Facebook



*In the Community,  
for the Community*

Covering Kenton through to Dawlish Warren,  
Shaldon, Teignmouth, Bishopsteignton  
and surrounding villages

**Travel with Us**

Accessible, affordable door to door transport services  
for residents unable to use public transport,  
or where no suitable transport is available



- For hospital, medical and wellbeing appointments
- Ring & Ride Tuesday to Friday, traveling to local towns, supermarkets and social trips out and about in Devon
- Minibuses available to community groups for events and activities
- Mobility scooters, wheelchairs for hire

Don't be stuck at home when you can get out with us  
Meet new people and visit some of  
the beautiful places in Devon

All vehicles adapted to suit most requirements

Please pop in or get in touch with  
our friendly team

**01626 88 88 90**





- Pressure Washing
- Carpet Cleaning
- Window Cleaning
- Fascia & Soffit Cleaning
- Gutter Clearance
- Hard Surface Cleaning

Adam Wynne

 **07546 376692**

hello@southwestpressurekings.co.uk



**DAWLISH GARDEN SOCIETY**  
**Meets at THE MANOR HOUSE,**  
**OLD TOWN STREET, DAWLISH EX7 9AP**



**MAY 28, Thursday, 7.15pm**

**Gertrude Jekyll – David Usher**

**JUNE 25, Thursday, 7.15pm**

**A Medical Herbalist – Laura Evans**

**SEPTEMBER 24, Thursday, 7.15pm**

**Sustainable Food Growing**

**Helen Bowker, Ripple Effect Ambassador**

**OCTOBER 24, Saturday, 10am**

**Camassias – Stella Exley of Harespring Cottage**

**NOVEMBER 21, Saturday, 10am**

**Celebration of Devon Wildlife – Gavin Haig**

## **SPECIAL EVENTS**

**SATURDAY MAY 16**

**Big Plant Sale – Front of Strand Centre**

**WEDNESDAY JULY 8TH**

**Coach Trip to Marwood Hill Gardens**

**SATURDAY AUGUST 8TH**

**Big Plant Sale – Front of Strand Centre**

## **NEW MEMBERS AND VISITORS ALWAYS WELCOME**

Membership £10.00 per year

£1 per meeting, £3 for visitors, refreshments and raffle included

Chair: June Cassidy 07486 370880

Secretary: Suzanne Jones 01626 889184

**[www.dawlish-gardensociety.uk](http://www.dawlish-gardensociety.uk)**





## Luxury Care in Dawlish



### Facilities Include

- Personalised residential, nursing, dementia and respite care.
- Spacious en-suite bedrooms, some with private patios.
- Unique Premium and Companion bedrooms, suitable for couples.
- Beautifully landscaped biodiverse gardens and outdoor patio areas.
- Bar, Bistro and Cafe areas.
- Hair and Beauty Salon.
- Activities Suite and Lifestyle Kitchen.
- Wellness Suite.
- Grandchildren's Playroom.

Scan for details:



Tel: 01626 221 591 [mmcgcarehomes.co.uk](http://mmcgcarehomes.co.uk)