

# Project ECHO: Moving Knowledge, Not People

Empowering people to make a difference in their communities with the right knowledge, at the right place, at the right time.

## Project ECHO is tackling the world's greatest challenges

Created in 2003 to deliver specialized medical knowledge to rural health care providers, Project ECHO builds communities of practice through free virtual mentoring and learning.

Through ECHO, professionals learn and share best practices in health care, education and more. Backed by over 500 peer-reviewed research articles, ECHO has proven effective across disciplines and geographies as a way to reduce disparities, strengthen health systems and drive collaborative solutions for local priorities.

Project ECHO is helping governments, educational institutions and NGOs accelerate their progress toward meeting the United Nations Sustainable Development Goals, building a more equitable world.

## Four Principles of the ECHO Model



**Use technology to leverage scarce resources**



**Share best practices to reduce disparities**



**Apply case-based learning to master complexity**



**Evaluate and monitor outcomes**

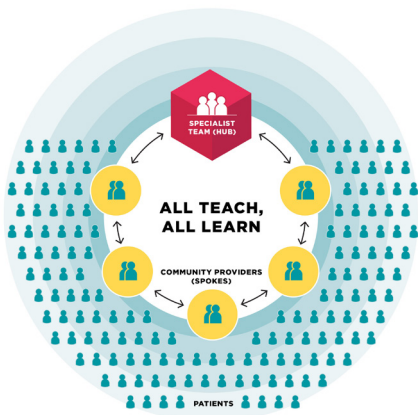
**Join us today.**

We are changing the world, with a goal of touching 1 billion lives by 2025.

For more information on Project ECHO:  
**ECHO.UNM.EDU**

## How ECHO Works

With an elegantly simple model, Project ECHO's potential for application and scalability is unprecedented, especially in low- and middle-income countries (LMICs) and in rural and underserved communities throughout the world. Participants attend virtual case-based sessions with subject-matter experts, empowering them to lead positive, sustainable change in their communities. The participants and subject-matter experts all learn from each other: knowledge is generated, refined and tested by local experience. This "all teach, all learn" method democratizes expertise and makes it relevant to local cultural contexts.



**ECHO helps people work toward a common goal. Thanks to ECHO, grassroots, community-driven change is happening in Sudan.**

- Nada Fadul, MD, FIDSA, Coalition of Sudanese Organizations Against COVID-19 and University of Nebraska Medical Center

## Building a More Equitable Global Community

Dozens of ECHO programs take place weekly—and their reach extends around the globe. ECHO programs operate in North and South America, Europe, Africa, Australia and Asia. More than half of ECHO programs serve LMICs, and more than half of ECHO program participants are women. New ECHOs, addressing new disciplines, launch every week.

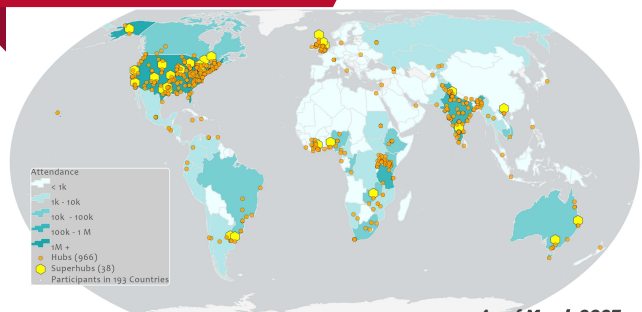
## ECHO in Action

### Today Project ECHO is helping:

- ▶ Health care providers around the globe provide effective treatment to patients in their own communities for complex conditions ranging from diabetes, heart disease and cancer to COVID-19, hepatitis C and HIV.
- ▶ Early childhood educators learn how to be culturally responsive to their students' unique needs through social-emotional learning awareness and strategies.
- ▶ Partners adapt the ECHO Model to support conservation and climate change programs around the globe, collaborating with the United Nations Environment Program and Conservation International.
- ▶ Public Safety ECHOs partner with city officials and other stakeholders to address homelessness, mental health, substance abuse and recidivism in their communities.
- ▶ Communities throughout the world address universal challenges including maternal and child health, mental health, substance abuse, infrastructure, emergency preparedness, and more.



## Where We Work



As of March 2023

## Join us today.

The ECHO learning model amplifies the voices of local experts.

For more information on how to become a partner:  
**[HSC.UNM.EDU/ECHO/BECOME-A-PARTNER/](https://HSC.UNM.EDU/ECHO/BECOME-A-PARTNER/)**