

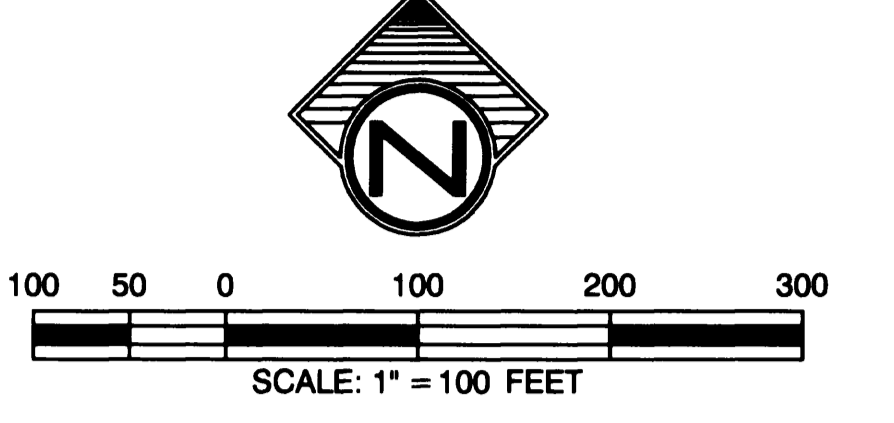
CERTIFICATE
I hereby certify that all real estate taxes involved in this plat have been paid as reflected by the current tax rolls. Security as required has been provided in the amount of \$ 67.02
per trust receipt no. 3282 to applied to 2002 taxes.
This certificate is NOT to be construed as payment of 2002 taxes in full but is given in order that this plat may be filed on record and the amount of the security deposit.
Dated this 31st day of May 2002
Dennis Somers
Tulsa County Treasurer
Judy Blumhuf
Tulsa County Clerk

APPROVED 11-5-01 by the City Council of the City of Broken Arrow, Oklahoma
Mayor Armando Ray
Attest: City Clerk 5-29-02

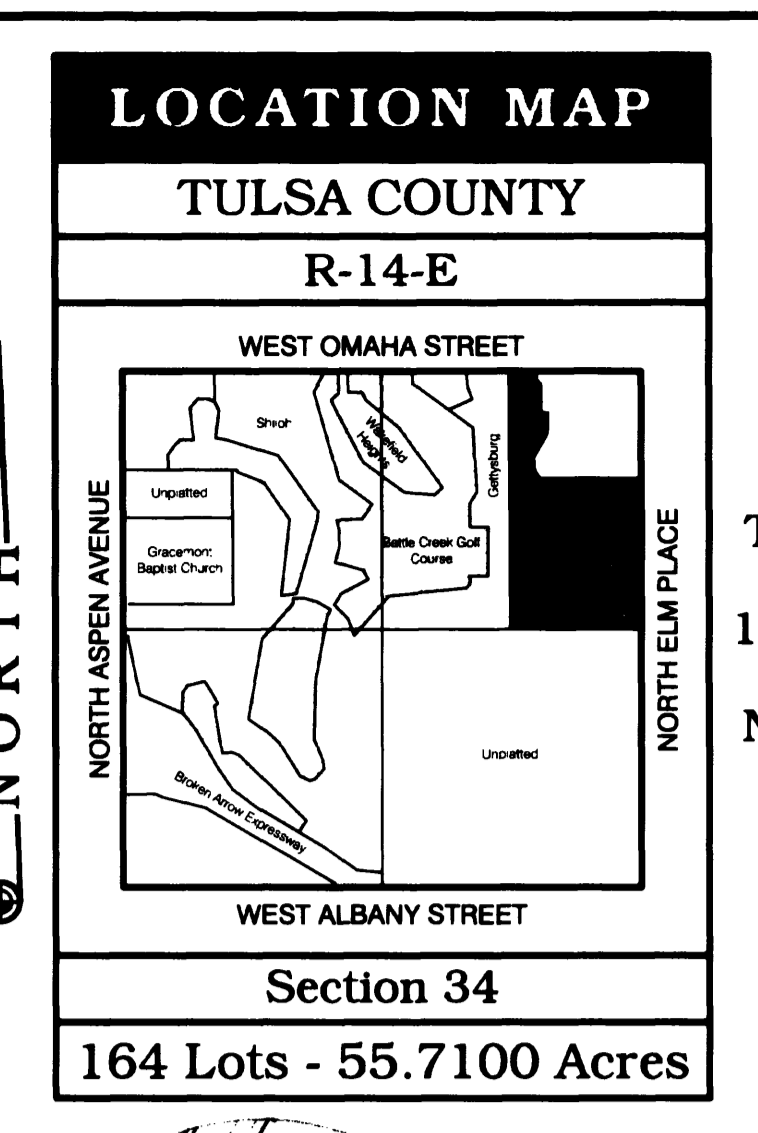
Tulsa County Clerk - EARLENE WILSON
Doc# 02069819
Receipt # 586881 05/31/02 16:00:44
5620

Planned Unit Development No. 128
The Reserve at Battle Creek
An Addition to the City of Broken Arrow
Being a Replat of a part of "Green Country Villas" and a part of the E/2 of the NE/4 of Section 34, T-19-N, R-14-E, of the Indian Meridian, Tulsa County, State of Oklahoma

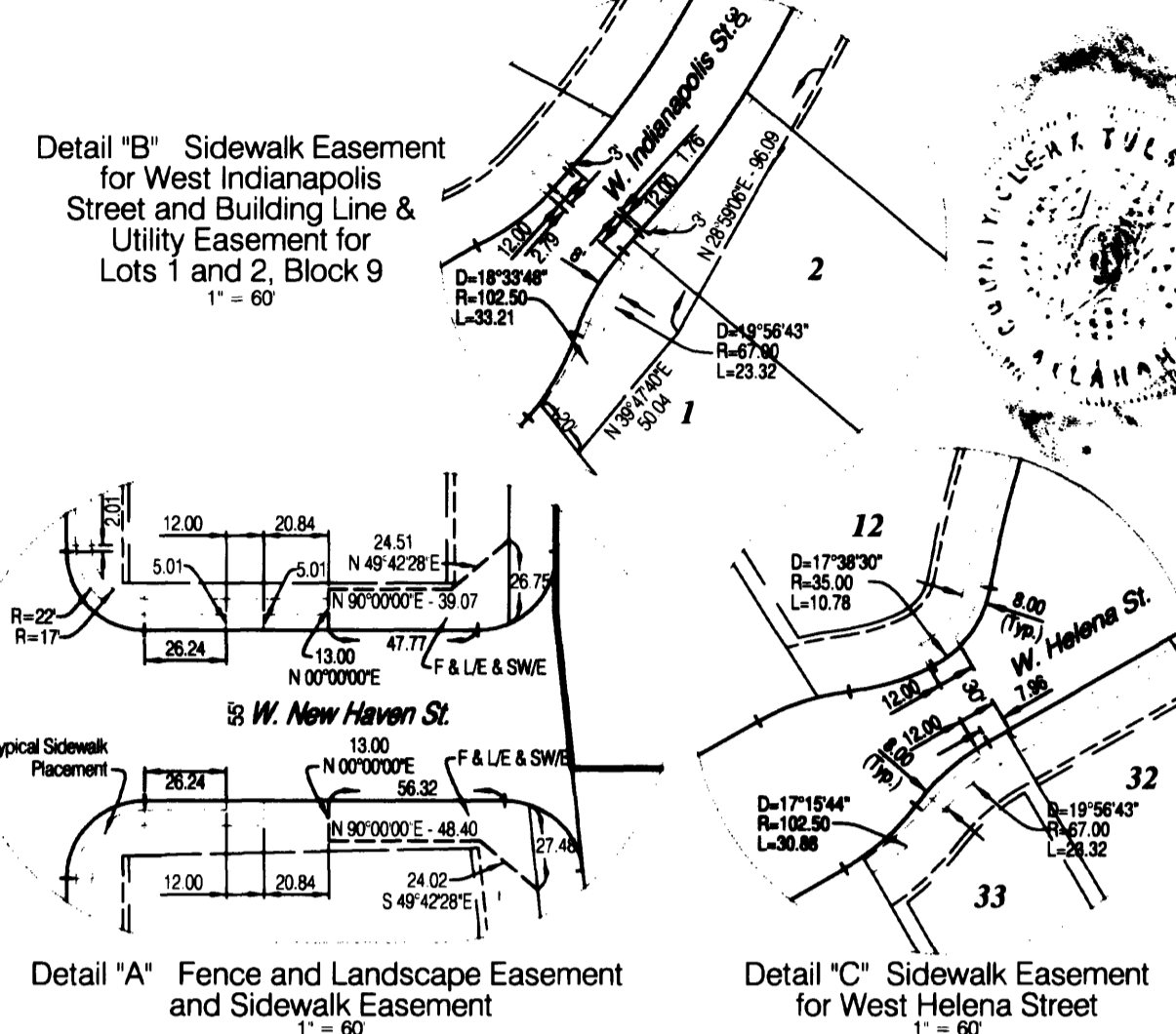
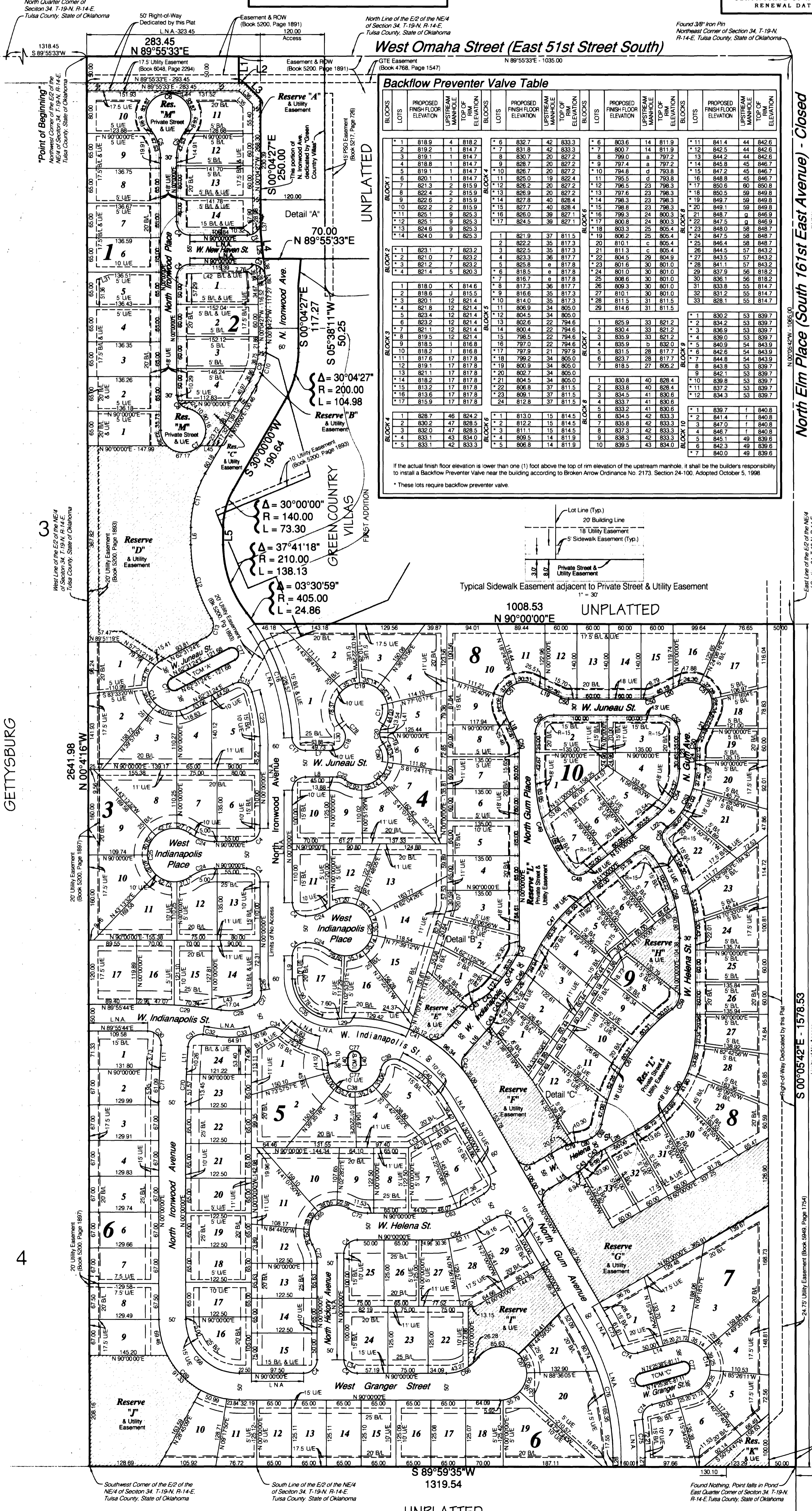
OWNER DEVELOPER
The Reserve at Battle Creek, L.L.C.
an Oklahoma limited liability company
1621 South Encalyptus Avenue, Suite 211
Broken Arrow, OK 74012
918.294.1190



ENGINEER SURVEYOR
Tulsa Engineering & Planning Associates, Inc.
an Oklahoma corporation
8209 East 63rd Place South
Tulsa, Oklahoma 74133
918.252.9621
CERTIFICATE OF AUTHORIZATION NO. 531
RENEWAL DATE: JUNE 30, 2003



Earlene Wilson, Tulsa County Clerk in and for the County and State above named, do hereby certify that the foregoing is a true and correct copy of a like instrument now on file in my office.
Dated the ___ day of _____ 20__
EARLENE WILSON, Tulsa County Clerk
Deputy



House Addresses

Block	House Number	Lot	House Number	Lot	House Number	Lot	House Number
BLOCK 9	111 918	11	31008001	12	31008002	13	31008003
	111 919	12	31008004	13	31008005	14	31008006
	111 920	13	31008007	14	31008008	15	31008009
	111 921	14	31008010	15	31008011	16	31008012
	111 922	15	31008013	16	31008014	17	31008015
	111 923	16	31008016	17	31008017	18	31008018
	111 924	17	31008019	18	31008020	19	31008021
	111 925	18	31008022	19	31008023	20	31008024
	111 926	19	31008025	20	31008026	21	31008027
	111 927	20	31008028	21	31008029	22	31008030
	111 928	21	31008031	22	31008032	23	31008033
	111 929	22	31008034	23	31008035	24	31008036
	111 930	23	31008037	24	31008038	25	31008039
	111 931	24	31008040	25	31008041	26	31008042
BLOCK 10	112 932	1	31009001	2	31009002	3	31009003
	112 933	2	31009004	3	31009005	4	31009006
	112 934	3	31009007	4	31009008	5	31009009
	112 935	4	31009010	5	31009011	6	31009012
	112 936	5	31009013	6	31009014	7	31009015
	112 937	6	31009016	7	31009017	8	31009018
	112 938	7	31009019	8	31009020	9	31009021
	112 939	8	31009022	9	31009023	10	31009024
	112 940	9	31009025	10	31009026	11	31009027
	112 941	10	31009028	11	31009029	12	31009030
	112 942	11	31009031	12	31009032	13	31009033
	112 943	12	31009034	13	31009035	14	31009036
	112 944	13	31009037	14	31009038	15	31009039
	112 945	14	31009040	15	31009041	16	31009042

Legend
Private Street & Utility Easement L & M
Reserve Area and Utility Easements A, B, C, D, E, F, G, H, I, J and K
BL - Building Line
Res - Reserve
UE - Utility Easement
TCM - Traffic Control Median

Monument Notes
A 3/8" x 1/8" deformed bar with a yellow plastic cap stamped "R.S. 1253" to be set at all plat boundary corners, prior to reconstruction unless noted otherwise.
A 3/8" x 1/8" deformed bar with a yellow plastic cap stamped "R.S. 1253" to be set at all lot corners after completion of improvements, unless noted otherwise.
A 3/8" x 1/8" deformed bar with a yellow plastic cap stamped "R.S. 1253" to be set at all street centerline intersections, points of curve, points of tangency, points of compound curve, points of reverse curve, center of outside-spiral and center of right-ways, after completion of improvements, unless noted otherwise.

Lot Addresses
Addresses shown on this Plat provided by the City of Broken Arrow Planning Department are accurate at the time the plat was filed, and the addresses are subject to change and should not be relied on in place of the legal description.

Benchmark
Crossed \square on top of curb on the north side of West Indianapolis Street, 4.5 feet west of the east end of curb, 4.0 feet south of a power pole, being 140 feet east of North Battle Creek Drive.
Elevation - 814.89 NVD 1989

Basis of Bearings
The non-astronomic bearings for said tract are based on an assumed bearing of N 05° 42' W along the East line of the NE/4 of Section 34, T-19-N, R-14-E, of the Indian Meridian, Tulsa County, State of Oklahoma, according to the Official U.S. Government Survey thereof.

Line Table

NO.	BEARING	DISTANCE
L1	S 00°42'27"E	50.00
L2	N 89°55'33"E	10.00
L3	N 00°00'00"E	42.83
L4	S 06°47'05"E	50.25
L5	S 00°00'00"W	32.96
L6	N 00°00'00"E	32.96
L7	N 00°00'00"E	49.73
L8	N 00°00'00"E	58.88
L9	N 00°00'00"E	43.43
L10	N 00°00'00"E	4.83
L11	N 03°25'22"E	41.32
L12	N 00°00'00"E	39.40
L13	N 00°00'00"E	30.66
L14	N 74°25'38"E	75.20
L15	N 00°00'00"E	60.00
L16	N 41°39'11"E	64.88
L17	N 41°39'11"E	7.48
L18	N 25°00'00"W	58.07
L19	S 60°00'00"E	58.07
L20	N 00°00'00"E	58.07
L21	N 25°00'00"E	58.07
L22	S 81°00'00"W	2.75
L23	N 00°00'00"E	65.45
L24	N 00°00'00"E	37.69
L25	S 06°47'05"E	50.25
L26	N 00°00'00"E	80.63
L27	N 00°00'00"E	17.54
L28	N 00°00'00"E	17.55
L29	N 00°00'00"E	119.03
L30	N 00°00'00"E	38.42
L31	N 69°29'00"E	24.66
L32	N 00°00'00"E	52.20
L33	N 00°00'00"E	49.49
L34	S 69°35'47"E	28.68
L35	S 42°34'27"E	20.86
L36	N 00°00'00"E	35.36
L37	S 00°04'27"E	19.61
L38	S 05°47'05"E	33.08
L39	S 05°47'05"E	17.18
L40	N 00°00'00"E	14.82
L41	N 00°00'00"E	25.25
L42	N 89°44'48"E	109.39
L43	N 00°00'00"E	106.13
L44	N 00°00'00"E	5.00
L45	N 00°00'00"E	41.04

Curve Table

NO.	DELTA	RADIUS	ARC
C17	87°52'53"	25.00	38.35
C18	133°27'13"	25.00	58.23
C19	261°04'57"	50.00	227.81
C20	75°13'31"	25.00	32.84
C21	184°29'57"	50.00	143.55
C22	38°52'12"	25.00	16.39
C23	187°07'04"	345.00	629.27
C24	38°52'12"	75.00	48.26
C25	253°44'27"	50.00	231.43
C26	89°15'21"	135.00	91.83
C27	71°47'24"	25.00	31.32
C28	38°52'12"	100.00	63.85
C29	39°07'45"	850.00	134.45
C30	93°29'39"	25.00	40.79
C31	89°41'57"	25.00	40.88
C32	01°52'10"	800.00	26.10
C33	38°52'12"	150.00	95.47
C34	71°47'24"	25.00	31.32
C35	38°52'12"	75.00	128.84
C36	31°54'14"	135.00	115.21
C37	77°45'00"	25.00	33.63
C38	170°21'00"	50.00	148.88
C39	105°23'48"	25.00	45.88
C40	34°51'48"	300.00	121.70
C41	66°53'42"	200.00	303.58
C42	79°23'06"	25.00	34.48
C43	233°33'33"	75.00	30.84
C44	132°8'18"	310.00	72.89
C45	28°15'52"	35.00	17.22
C46	181°24'44"	340.00	66.20
C47	25°33'33"	310.00	138.29
C48	90°15'15"	23.00	36.23
C49	38°44'45"	385.00	182.73
C50	25°00'00"	35.00	15.27
C51	140°00'00"	40.00	97.74
C52	90°00'00"	35.00	54.88
C53	31°00'00"	140.00	124.62
C54	31°00'00"	110.00	87.91
C55	87°52'53"	23.00	35.15
C56	38°12'45"	23.00	37.45
C57	38°52'53"	285.00	188.22
C58	35°47'17"	265.00	165.52
C59	132°14'18"	35.00	52.41
C60	60°00'00"	215.00	225.15
C61	43°11'01"	345.00	260.03
C62	52°12'12"	35.00	51.88
C63	30°00'00"	125.00	65.45
C64	30°00'00"	175.00	91.63
C65	146°42'56"	30.00	128.03
C66	53°07'48"	75.00	89.55
C67	233°07'48"	80.00	203.44
C68	90°00'00"	100.00	157.08
C69	90°00'00"	150.00	235.62
C70	03°25'22"	1035.00	61.83
C71	03°25'22"	1085.00	64.82
C72	289°12'27"	75.00	37.13
C73	06°39'39"	530.00	61.61
C74	82°14'01"	25.00	35.88
C75	07°49'27"	140.00	73.49
C76	30°00'00"	470.00	246.99
C77	180°00'00"	120.00	37.70
C78	08°53'47"	30.00	8.64
C79	180°00'00"	25.00	22.87
C80	46°13'54"	30.00	40.34

Curve Table

NO.	DELTA	RADIUS	ARC
C1	50°27'29"	50.00	44.03
C2	90°04'27"	25.00	39.30
C3	81°25'25"	25.00	36.79
C4	90°00'00"	25.00	39.27
C5	38°03'24"	86.00	56.46
C6	258°06'48"	42.00	187.74
C7	78°48'42"	25.00	34.39
C8	30°24'27"	125.00	65.61
C9	07°49'27"	140.00	73.49
C10	30°00'00"	200.00	104.72
C11	30°00'00"	270.00	145.49
C12	30°25'29"	25.00	40.75
C13	82°25'29"	25.00	40.75
C14	180°00'00"	25.00	157.68
C15	100°31'32"	25.00	43.86
C16	32°02'12"	405.00	226.57

