

## PARTY WALL 2 HR RATED SECTION

WALL DETAIL UL U386

**WINDOW NOTE:**

ALL BEDROOM WINDOWS SHALL BE EGRESS WINDOWS  
WITH MIN 24" CLEAR HEIGHT - MIN 20" CLEAR WIDTH  
- MIN 5.7 SF AREA - MAX 44" ABOVE FIN FLOOR

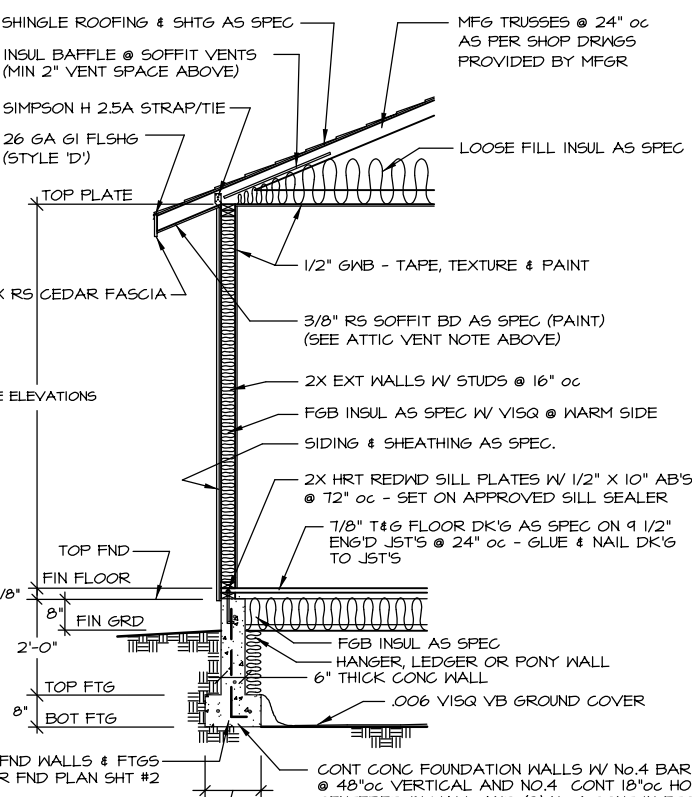
VENTILATION NOTES:

CRAW SPAC.F: Parc 408 | 2018 IBC

Provide under floor ventilation of not less than 1 sq. ft. for each 1500 sq. ft. of under floor area with the ground surface covered by a Class I vapor retarder material -- Or Alt. Mechanical Power Ventilation System per detail sheet no. 3 as required.

ATTIC SPACE:

1. Provide attic ventilation of not less than 1 sq. ft. for each 300 sq ft of attic area with roof, gable and/or ridge vents at 3 ft minimum above eave vents. Note eave vents must equal less than 50% of the total venting.
2. Provide 16"x8" screened soffit vents at eaves @ 72"oc or preferred, a continuous 2" screened soffit vent.



**TYPICAL SECTION**

$$= 1/4'' \times 1/2''$$

MINIMUM DESIGN CRITERIA	IECC 2018 PRESCRIPTIVE CODE COMPLIANCE
CODES: IRC 2018, IECC 2018, UFGC 2018, NRC 2018, IRC 2018, IECC 2018, UFGC 2018 (MCHG)	COMPONENT
PROFESS DEPTH 24" MINIMUM	CEILING
CEILING DEPTH 24" MINIMUM	R - 30 BLOWN FIBERGLASS
BASIC WIND CATEGORY: 15 MPH	WOOD FRMD WALLS
WIND EXPOSURE CATEGORY: 3	R - 21 FIBERGLASS BATT
RAIN FALL 1 INCH PER HOUR	R - R4 AT CORND FRND WALL
SOIL BEARING CAPACITY: 1500 PSF	CEILING SPACE
FLOOR LOADS: 25 PSF LIVE LOAD	R - R0 LONGID - EXTEND MIN 24"
FLOOR LOADS: 40 PSF LIVE - 17 PSF DEAD	CEILING SLAB