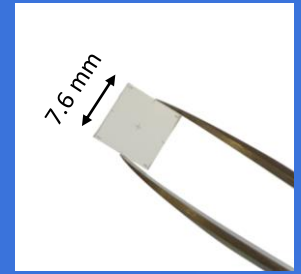
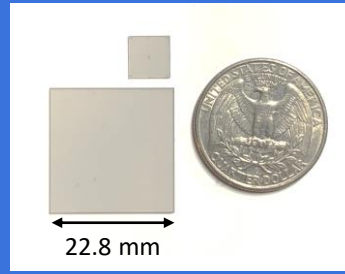


# High quality graphene

Substrate: silicon carbide

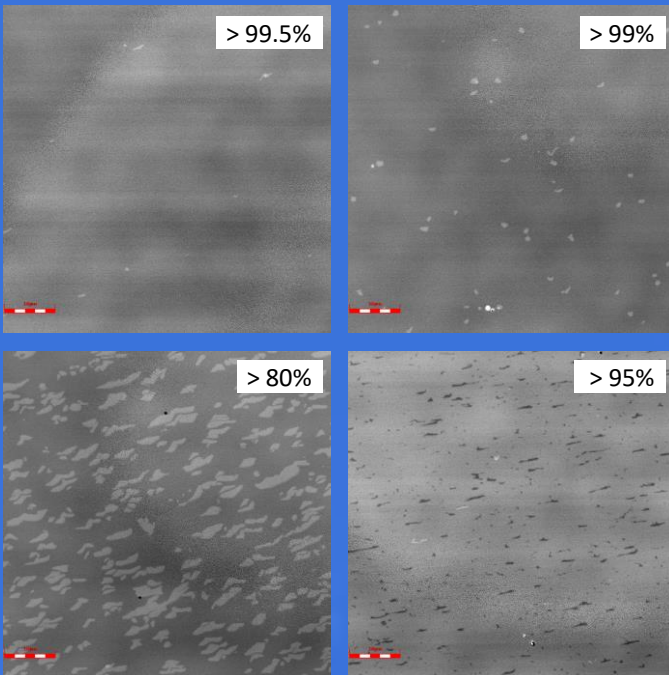
Applications: metrology, research



- ▶ We offer NT series and WT series epitaxial graphene with different morphology to meet your specific application requirements.
- ▶ Customized sizes available.
- ▶ High-resolution characterization of graphene thickness across the substrate.

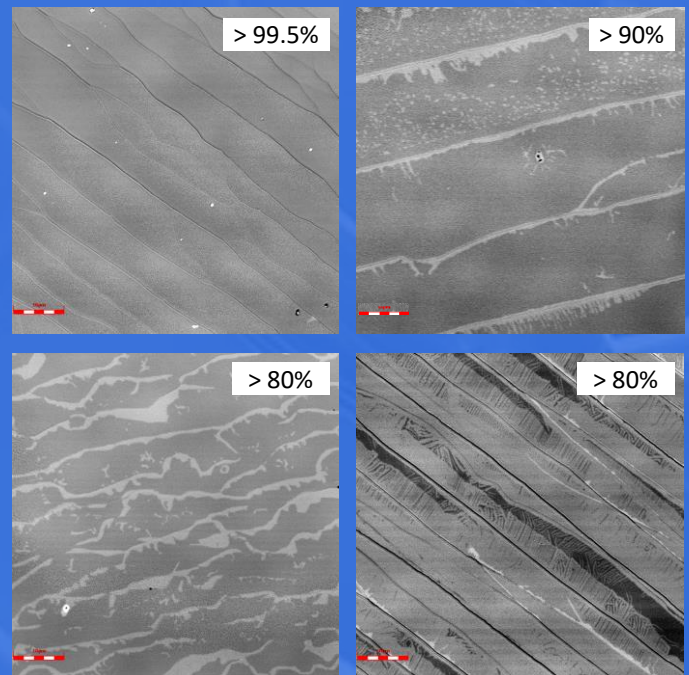
## NT series

- Narrow terraces ( $< 1 \mu\text{m}$ )
- The size of bilayer/multilayer graphene (the bright contrast patches in the pictures) varies from sub-micrometer to a few micrometers.
- The right-bottom picture shows incomplete monolayer graphene with buffer layer area (the darker grey patches).



## WT series

- Wide terraces ( $> 2 \mu\text{m}$ )
- Bilayer/multilayer graphene favors the edge of terraces, forming long stripes (bright contrast).
- The right-bottom picture shows incomplete monolayer graphene with buffer layer area (the darker grey area) and graphene ribbons.
- The width of graphene ribbons is a few hundreds of nanometers.



\* Images of graphene on silicon carbide with different monolayer coverage rates (indicated in the upper right corner of each image). The scale bar is  $10 \mu\text{m}$ .

