



Rising with the sun...

**STAINLESS STEEL TANKS**  
**SOLAR WATER HEATERS**  
**HEAT PUMPS**  
**WATER MANAGEMENT SOLUTIONS**



[www.sunstellar.in](http://www.sunstellar.in)

# CERTIFICATIONS

Sun Stellar has received the highest level of certifications in the industry for its products. Each of its products are a result of intensive research and represents cutting-edge technology.



# GROUP CLIENTELE





**PRESERVE  
YOUR WATER,  
SAFE GUARD  
YOUR HEALTH**

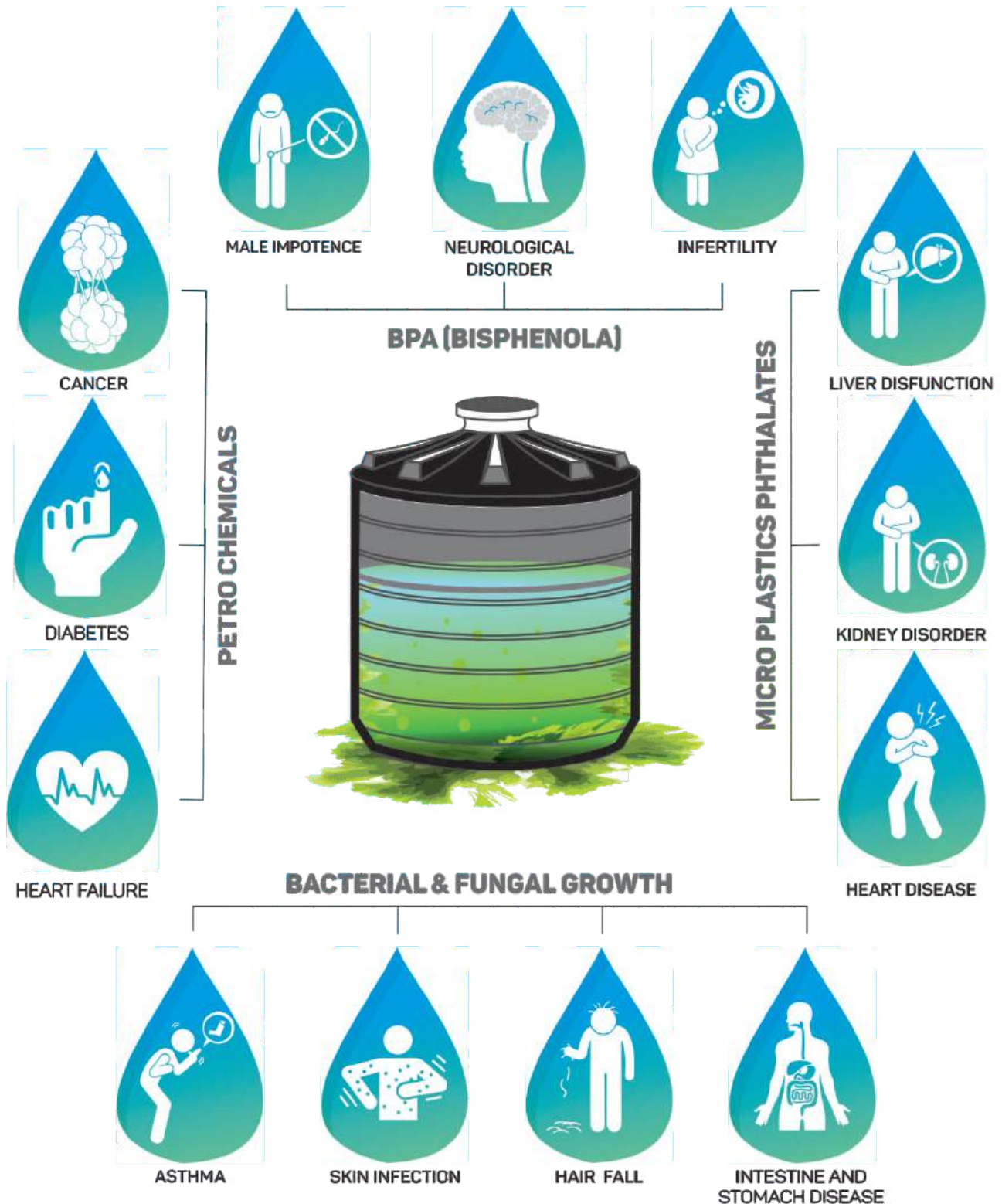


Maintains  
Water  
Temperature



# PLASTIC TANKS ARE HAZARDOUS

AS PER VARIOUS RESEARCHES CARRIED OUT BY:



# ADDING A STELLAR TOUCH FOR A **HEALTHY & BETTER** Today & Tomorrow



**Zero Bacterial/  
Fungal Growth**



**Maintains  
Temperature**



**Long Life  
Zero Maintenance**



**No Chemical  
Contamination**



**100% Surgical Grade  
Stainless Steel**



**100% BPA Free**

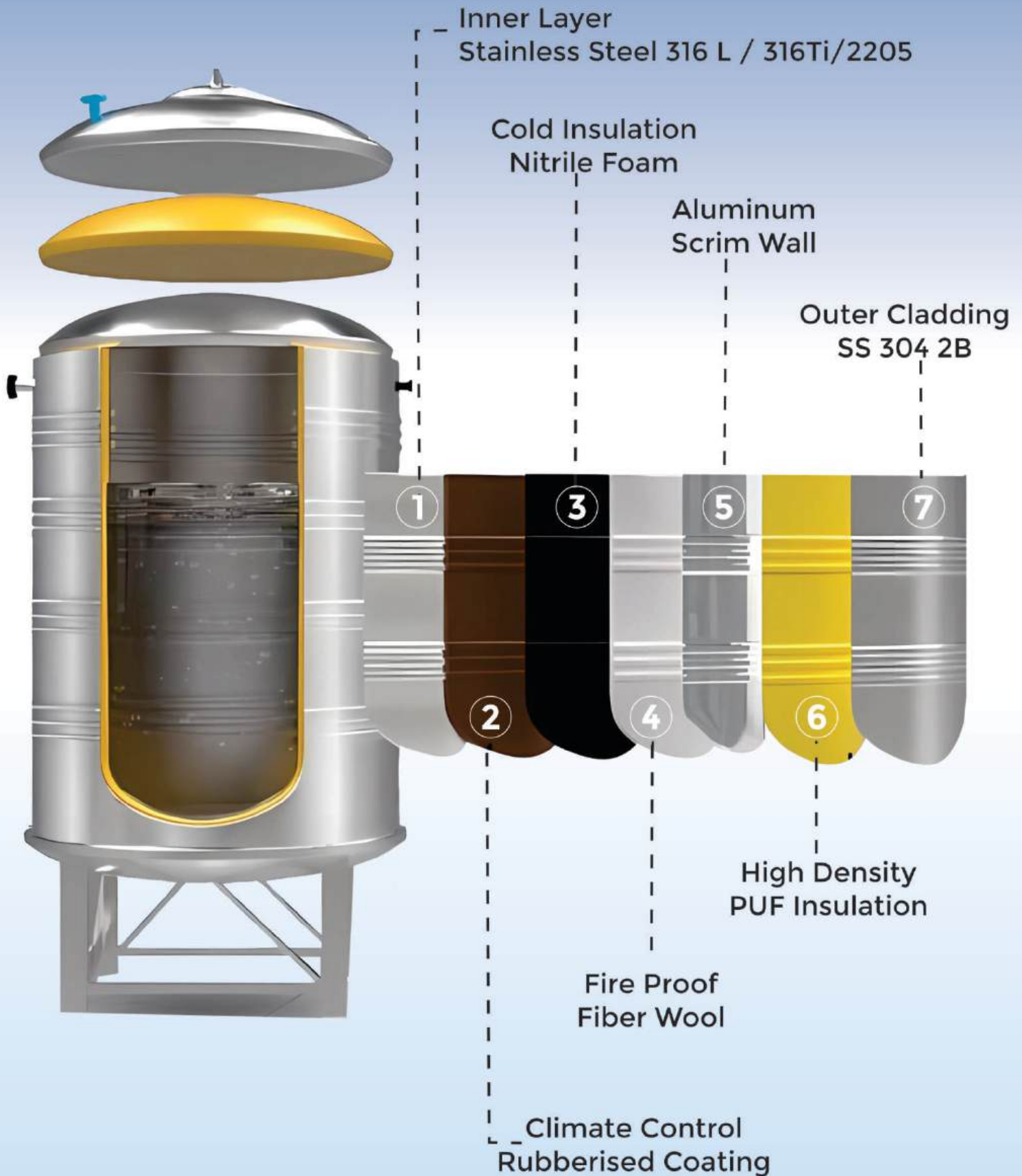


**No Foul Smell**



**Pure Water**  
Keeps your body Healthy  
& Disease Free

# STELLAR ULTRA 7 LAYER TECHNOLOGY



Stellar Ultra is the most contemporary solution for Water Storage. These Water Tanks are engineered with Cutting Edge 7 Layer Technology. Inner Layer of Stellar Ultra Tanks can be selected out of Titanium Steel - SS 316 Ti or Super Duplex SS 2205 or Super Alloy 904 L depending on the Water Quality and Water Source. Five Layers of Insulation are consecrated on the Inner Tank which makes it resistant to the odds of Fire also. Outer Cladding Layer is done with SS 304 which protects all the inner layers from any kind of deterioration.

## FEATURES



Inner Tank Available with Surgical Steel SS 316 L, Titanium Steel SS 316 Ti And Super Duplex SS 2205.



Maintains Temperature of Water. (Outside Temperature: 0 to 50 Degrees C)



Fire Proof Insulation Layer



Dow Chemical - Best Suited PUF insulation for SS Tanks



Automatic Water Level Controller



Thickness of Inner Tank Options - 1.0 MM & 1.5 MM



## SELECT THE RIGHT GRADE OF **STAINLESS STEEL**

### **AUSTENITIC FOOD GRADE STAINLESS STEEL - 304**

304 Grade Stainless Steel is the most versatile and widely used stainless steel. The Steel contains both chromium and nickel which makes it a corrosion resistant under mild environment. It is considered resistant to pitting corrosion with water having TDS upto 400mg/L at ambient Temperatures.



### **SURGICAL STAINLESS STEEL -316**

Grade 316 is the standard molybdenum-bearing grade, second in importance to 304 amongst the austenitic stainless steels. The molybdenum gives 316 better overall corrosion resistant properties than Grade 304, particularly higher resistance to pitting and crevice corrosion in chloride environments.



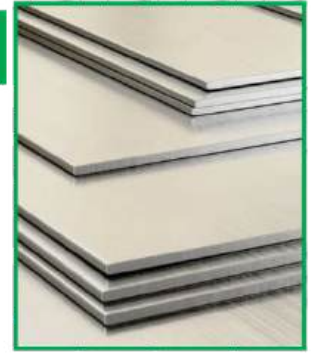
### **SURGICAL STAINLESS STEEL WITH TITANIUM - 316 Ti**

316Ti is a titanium stabilised version of 316 molybdenum-bearing austenitic stainless steel. The 316 Ti alloys are more resistant to intergranular corrosion than the standard 316 Alloys because of the addition of Titanium.



## SUPER DUPLEX STAINLESS STEEL - 2205

Alloy 2205 is a duplex (Austenitic and Ferritic ) Stainless Steel. The high chromium, molybdenum and nitrogen contents results in excellent corrosion resistance properties even in environments containing chlorides and sulphides. It also has good erosion fatigue properties and the yield strength is twice of that of SS 304 / SS 3016.



### Chemical Composition of Super Duplex 2205

ASTM	EN	%C	%Si	%Mn	%P	%S	%N	%Cr	%Ni	%Mo
2205	EN 1.4462	0.03	1	2	0.03	0.035	0.14-0.20	21-23	4.5-6.5	2.5-3.5

## SUPER ALLOY STAINLESS STEEL - 904 L

904 L is the most Superior low carbon, high Alloy Stainless Steel. 904L Alloy performs better than all other austenitic stainless steels due to the higher alloying of nickel and molybdenum. 904 L has greater resistance to precipitation of ferrite and sigma phases on cooling and welding than other stainless steels. 904 L is the best available option for Water Storage in areas with extreme hardness or high chemical contents in Ground or Supply Water.



### Chemical Composition of Super Alloy Stainless Steel 904 L

ASTM	EN	%C	%Si	%Mn	%P	%S	%N	%Cr	%Ni	%Mo	%Cu
904 L	EN 1.4539	0.02	1	2	0.045	0.035	0.1	19-23	23-28	4.0-5.0	1.0-2.0

## TDS (TOTAL DISSOLVED SOLIDS) AND WATER SOURCE

TDS and Water Source plays an important role in the selection of Right Grade of Stainless Steel. Hards Water with High Dissolved Chemicals can cause stress and pitting corrosion in Stainless if the right grade is not selected.

Grade	Water Source	Water Type	TDS (PPM)	Chloride (Cl) (mg/L)	Chlorine (Cl2) (mg/L)	Design Life
SS 304	Ground Water / River Water Supply	Soft	<300	<200	<2	15 Years
SS 316		Hard	<500	<300	<3	15 Years
SS316Ti		Hard	<600	<400	<3	15 Years
Duplex 2205	Brackish Water / Polluted Water	Very Hard	<2000	<1000	<5	20 Years
Super Austenitic 904	Brine Water / Sea Water	Extremely Hard	<10000	<5000	<5	20 Years

## SPECIFICATIONS

Capacity (LTRS)	Inner Diameter (MM)	Outer Diameter (MM)	Height of Tank (MM)	Inlet Connection	Outlet Connection	Over Flow Connection	Drain Connection
250	700	780	1250	1"	1"	1"	1"
500	700	780	1900	1"	1"	1"	1"
750	970	1070	1620	1"	1.5"	1"	1.5"
1000	970	1070	1900	1"	1.5"	1"	1.5"
1500	1220	1320	1900	1"	1.5"	1"	1.5"
2000	1400	1520	1900	1"	2.0"	1.5"	2.0"
	1300	1420	2150				
2500	1400	1520	2210	1"	2.0"	1.5"	2.0"
3000	1400	1520	2550	1"/1.5"	2.0"	1.5"	2.0"
	1600	1720	2150				
4000	1700	1820	2400	1.5"	2.0"	1.5"	2.0"
	1800	1920	2250				
5000	1800	1920	2500	1.5"	2.0"	1.5"	2.0"
7500	1900	2050	3200	2.0"	2.0"	2.0"	2.0"
10000	1900	2050	4100	2.0"	2.0"	2.0"	2.0"



### LARGE MAN HOLE

Easy to clean

Facilitates in easy inspection



### LOCKABLE LID

Prevents entry of Insects and animals

Protects from opening itself in bad weather conditions



### EXTRA REINFORCED BODY

Ribbed wall provide aesthetic look and strength

Provides additional structural strength

Protects from any pressure exerted by the water

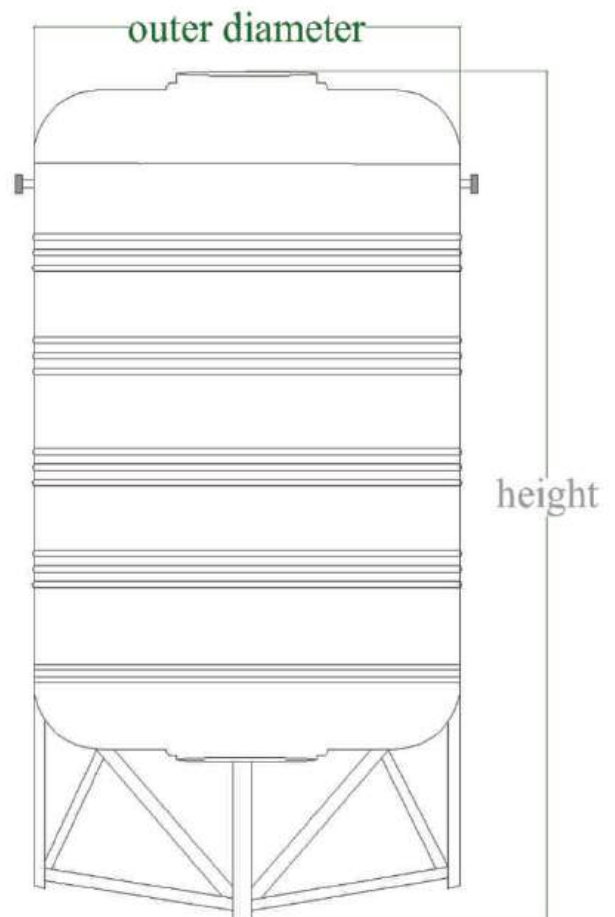


### UNIQUE ROUND BASE

Unique round base

It has special drain fitting at the bottom

The dome shape makes a whirlpool while Cleaning the tank





VIETNAM EMBASSY, NEW DELHI



IIT, DELHI



VICE PRESIDENT HOUSE, NEW DELHI



KARNAL



DLF

DLF SHOPPING MALL



MANSAROVAR, JAIPUR



ROHINI, NEW DELHI



PANIPAT



TDI CONNAUGHT PANIPAT



CHANDIGARH



LUDHIANA



LUCKNOW



GURGAON

Distributor for MP



WATER WISE SOLUTIONS

📍 208, Akashdeep Complex, 21, Snehnagar  
Indore, Madhya Pradesh 452001

☎ +918602403338


✉ Email [wwlivewise@gmail.com](mailto:wwlivewise@gmail.com)


🌐 [www.waterwisesolutions.in](http://www.waterwisesolutions.in)

Follow Us :   

sun  
**Stellar**

Rising with the sun...

SF-28, 30 Cross River Mall, Delhi 110032 

Khasra # 12/21-22, Village Jalalpur 1,  
Tehsil Bapoli, Panipat 132104. Haryana 

+91 9143 917 917 

[info@mehargroup.in](mailto:info@mehargroup.in)  
[info@sunstellar.in](mailto:info@sunstellar.in) 



[www.sunstellar.in](http://www.sunstellar.in) 