



TRINITY COMMUNITY PARK

Community Impact REPORT

<http://trinitymonument.org/trinity-community-park>

Inclusivity + Diversity + Unity =
Everyone!!!

Trinity Community Park is not just a playground for kids.
It's not just the first ADA park in Monument.
We are a playground for EVERYONE at every stage of life!

*Equipment for all abilities
and every BODY type*

The logo for Trinity Community Park features the words "TRINITY COMMUNITY PARK" in a bold, white, sans-serif font. The text is arranged in three lines: "TRINITY" on the top line, "COMMUNITY" on the middle line, and "PARK" on the bottom line. The text is set against a background of two overlapping, irregular brushstrokes. The top stroke is a vibrant blue, and the bottom stroke is a bright green. The overall shape of the logo is roughly circular but with a hand-painted, energetic feel.

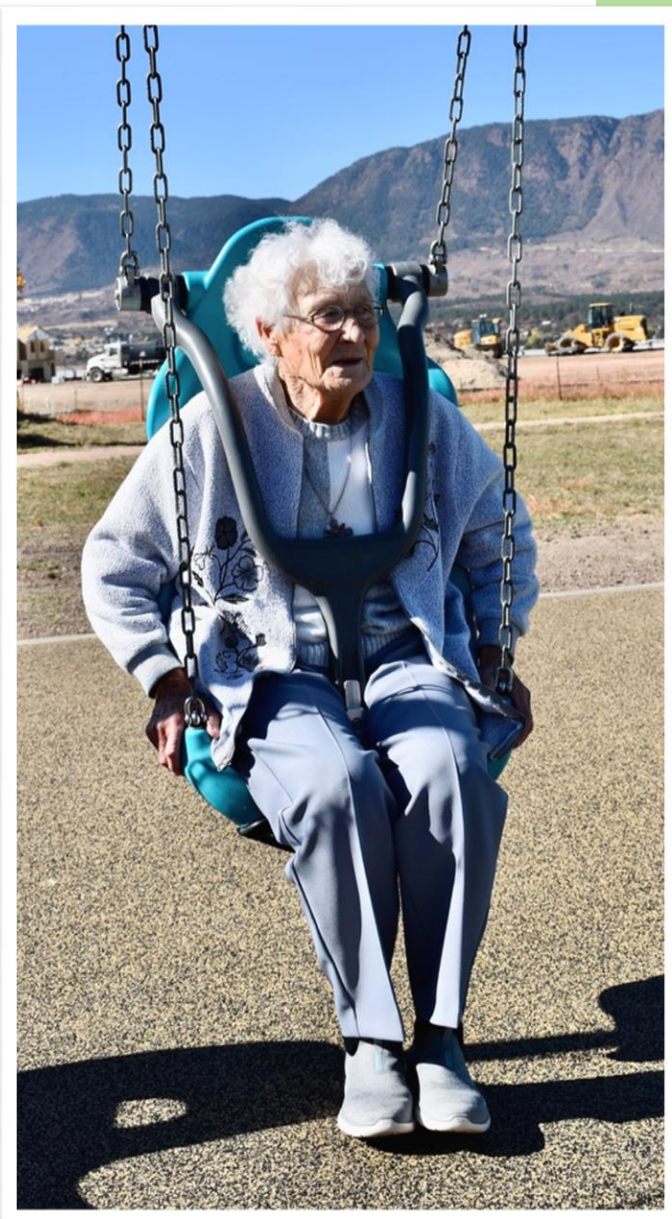
**TRINITY
COMMUNITY
PARK**

*Where community comes **together***

TAMARA SCHWARZ, Executive Director

Why?

Trinity Lutheran Church has made a commitment to **inclusivity** in our community. We value bringing **EVERYONE** together to play, creating **unity**.



ADA requirements are not enough; being **inclusive** and **diverse** is more important. It's not just about people with disabilities, it's about **EVERYONE** enjoying and sharing the benefits of play: physical, sensory, and social. **Inclusive** playgrounds go beyond regular guidelines, facilitating engagement between people with physical challenges, development disabilities, the elderly, medically challenged and everyone in between. An **accessible** playground means that a person who uses a walking device, like a wheelchair, walker, or stroller can access the playground. If it is **inclusive**, the play activities are selected and laid out so that someone in a chair can engage with people of different abilities. This is a place where a senior citizen and a grandchild can play **TOGETHER**... creating **unity**!

Trinity was founded in 1985 in Monument, CO where it was originally surrounded by ranch land. Now, the church property sits among five home developments. The nearest park is almost two miles away, over a freeway, without sidewalks, on a busy state highway. Trinity has acres of land not being used, so we have aspired to build an accessible playground suitable for all abilities. A park with similar equipment to Phase 2 is over 30 miles away. We are committed to do more, with a merry-go-round for wheelchairs, sensory panels, unity swing, and a teeter totter where people with mobility challenges can sit, lie down, or hang out in the tunnel. Wait for it... plus a **wheelchair trampoline**! Yes, you read that correctly.

The more people come **TOGETHER** with all abilities, the more we see **similarities** instead of **differences**.



100 Year-old Marie

"This was so NEAT!"

It had been over 30 years since Marie felt the motion of a swing! It was so freeing to actually swing without her feet on the ground. Because of the *Special Rubber Safety Surfacing*, Marie was able to be with **EVERYONE** and not just sitting on a bench watching. She could get around with her walker and experience the laughter and joy with the kids first hand. Trinity Community Park gave a 100 year-young lady the ability to participate in the musical panels, merry-go-round, swing, climbing elements, and **SO MUCH FUN**.



Accessible Whirl Merry-Go-Round

*"I could not imagine a merry-go-round that we all can go on - **TOGETHER** - as a **FAMILY**! Our minds were blown away that we could wheel our son onto the merry-go-round, and watch his eyes and head - connect with us, in ways I have not seen in a long time. What an amazing experience - and we can't wait to go again! I am telling **EVERYONE** about this amazing park!!!"*

- Lisa Macneir, whose son is special needs.

Phase 1 OPENED SUMMER 2022

Trinity raised over \$50,000 internally for the project.

Due to the general lack of parks in the area, neighborhood kids were using the church's old playground and parking lot to ride bikes, scooters and play. The church once had a playground, but it had to be torn down due to aging equipment becoming a safety hazard.

Now, the community has access to a brand-new park with a swing set, tire swing, toddler swing, spring toy, slides and large climbing structure. The park also includes a .25 mile fitness walking path that is dog friendly and for people of all ages. The official ribbon-cutting happened on August 27th, 2022.



Phase 2

OPENED FALL 2023

Trinity said they would and DID!

Trinity Community Park is designed to give our community a space for people with and without disabilities a chance to play TOGETHER, a space where EVERYONE can participate equally. We have created an environment that extends access, kindness, and compassion to EVERYONE, affecting the wellbeing of an entire community.

According to the 2020 Census, 50,000 people live in the Tri-Lakes area. Statistics show that 12% of the US population have a severe disability that affects at least one function of daily living. Playgrounds and parks are vital for community connections at every stage of life, yet most designs overlook the needs of 1-in-4 living with physical, cognitive, or sensory disabilities, autism, the medically fragile, and our aging population.



"I believe this trampoline surprised Drew the most and activated him, both physically and mentally! It was so fun... family-like fun, to all hold hands and jump on the trampoline - laughing ALL TOGETHER!"

Lisa's son, Drew, is 22 years old and has not experienced motion, besides a wheelchair, in a very long time.

We have provided ADA-compliant ramps and surfacing, **accessible** swings, wheelchair **accessible** whirl merry-go-round, **unity** teeter totter, rocking cozy cocoon, sensory equipment, even a wheelchair **accessible** trampoline. The expense of this project required funds from corporate sponsorships, grants and the larger community. We still need more funds for Phase 3, 4, 5.

Trinity Community Park is the first ADA- **inclusive** and compliant playground in the Monument area. The closest **inclusive** accessible public playground is over 30 miles away with similar equipment. ADA guidelines can be limiting, but this park is **inclusive** giving people of all abilities a place to play with those of developmental disabilities such as autism, cognitive, sensory, physical and other disabilities.



"Siobhan did not know what to think of the trampoline. We bounced on it holding hands. It is important for her to get some impact in her legs and back, to help with her bone density and strength. The trampoline can give her a little of that sensation. It is physical motion that she cannot get anywhere else. Trinity Community Park is an important place which will provide these different experiences for Siobhan."

- Brad Gann, Siobhan's father





Trinity Community Park is all about **COMMUNITY**. The neighborhood asked for extra amenities, which we have included!

Sensory Sandbox

Many children on the autism spectrum struggle with sensory processing disorder (SPD). This condition makes it hard to perceive or respond to stimuli received through their senses. SPD can cause children to have difficulty interpreting their environment and may react to situations “uniquely” or “unexpectedly.” Sensory sand play is beneficial to people with SPD because it integrates all major senses into playtime comfortably.



When a child places their hands into a sandbox, they enter a safe world of restriction-free imaginative play. Unlike a puzzle or coloring book, sand play allows children to experiment and explore their natural “out of the box” curiosity while safely inside the box. If you add toys, essential oils, water, or colorful objects, many senses are engaged at once, and children can work on sensory development without feeling like they are completing a task.



*A space for imaginative play where **EVERYONE** can play **TOGETHER** was created and built as a Girl Scout Gold Award project by Jillian Zettlemoyer.*

Free Little Libraries



Trinity has two Little Library exchange boxes designed and made by Logan Miles as an Eagle Scout project. One is directly in the playground and one on the street near the driveway. These boxes are building community and inspiring readers by expanding 24/7 book access to **EVERYONE**.

Donate a Book ~ Take a Book

Painted Rocks

Our rock garden is meant to spread kindness and love. If you want to spread kindness, please add a rock or two to help our garden grow! National Honor Students and the larger community have helped supply inspirational painted rocks to line the sidewalk to the playgrounds.

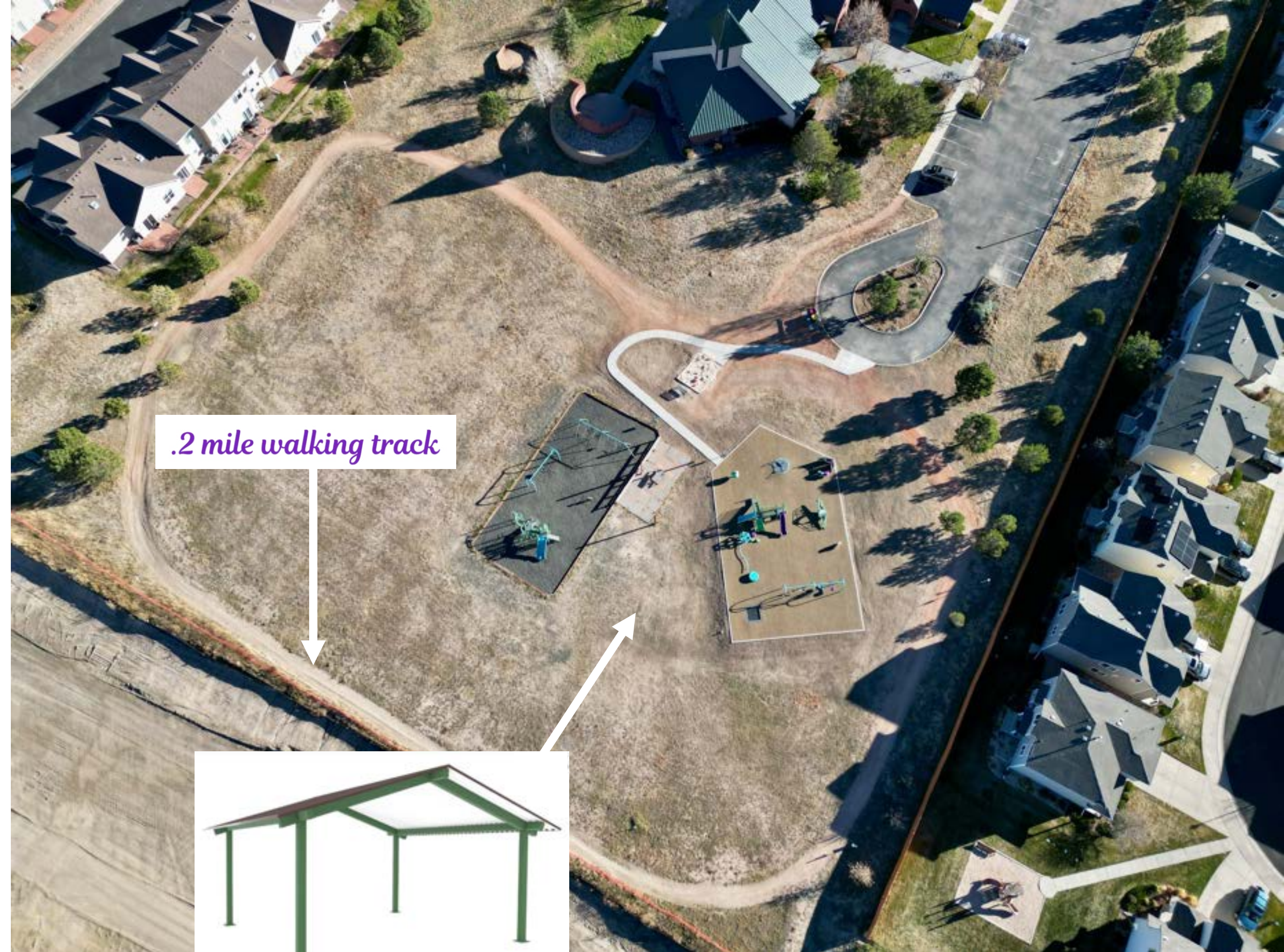


How you can make a Difference...

- Phase 1 Playground - opened May 2022
- Phase 2 ADA compliant playground - opened October 2023
- Phase 3 Pavillon shade structure, tables, benches - opens Spring 2024
- Phase 4 Other park amenities planned for Summer 2024, need funding
- Phase 5 & Beyond We listen & build, there is always more FUN to create!

We are committed to this crucial project in our community and for all people of today and tomorrow. More than 50,000 people live in Northern El Paso County in close proximity to the park.

We are requesting your partnership in realizing our INCLUSIVITY goals. We need more tax deductible donations to make this a reality. We need your assistance in realizing our goals.



.2 mile walking track



Pavillion

Making this project a reality creates a close, safe, **inclusive** play area for our children and EVERYONE. TOGETHER we can build a park that is **inclusive, diverse and unite** EVERYONE to play TOGETHER.



DREW

Everyone can agree, there is something so special about spending the day as a family, where all of us can be included in the fun, and nobody has to sit on the sidelines. The excitement I felt when I heard about this new accessible park coming to our neighborhood can be best described as - appreciation! My son is my superhero. He has a debilitating disability and now is in a wheelchair, unable to swing or be included in typical “play time.” SO - we do not go to parks any more. Yes, sad! Thank you to



Trinity Lutheran Church for not making our family feel alone, but giving us the feeling of inclusion. There is plenty of time, daily, that I sweat the big stuff! I believe in celebrating the small stuff (like smiles and being able to be together, outside, doing ‘typical’ family events). The simple joys of family time at the park! This is truly a Family First approach!

- Lisa, Drew’s mother

Music Panels

Lisa proclaims: *This is going to be a fun challenge - and Drew will DO IT! A great cause-and-effect toy! Right now we do it hand over hand, and watch it grab Drew's attention. Over the next few months, I do believe he will be able to do this by himself. What a fun, musical (therapeutic) toy for ALL to enjoy!*



Special Rubber Surfacing

This park has thought of everything! The rubber surfacing that they found, to truly make this park accessible to all and SAFE for all, did just that! WE CAN NOW GO AND ENJOY AS A FAMILY! Trinity Community Park is built to USE and built to Last! - Lisa



SIOBHAN

TRINITY
COMMUNITY
PARK

We've never taken Siobhan to a special needs playground, since the closest one is 30 minutes away. Traditional playgrounds are completely inaccessible, since she is cortically blind with no fine motor skills. Kids like Siobhan need a hands-on approach to be able to use park equipment.

- Sharon and Brad Gann, Siobhan's parents

Siobhan loves the swing. She is an adult with special needs, and the swing is big enough for her to sit in and be buckled. She cannot ride on any traditional swings without the danger of falling. The ADA swing lets her enjoy that motion of swinging while being completely safe. Just like anyone else, Siobhan can go for several minutes enjoying the motion. She finds it relaxing and fun. It is a great structure to have at the Trinity Community Park.

- Brad Gann, Siobhan's father





We have been members of the Monument community since 1983 and of Trinity Lutheran Church since 1992. We had a son, Nathan John Balk born in July of that year who was diagnosed with Cerebral Palsy. We were prepared for a life of caring for his needs when he unexpectedly died at 5 months old. The memorial proceeds we received at his death were used to build the original playground at Trinity in 1993.

Our older children grew up up on the old playground and now our grandkids, including Nathan Otto and Jacob, pictured, are enjoying the new equipment. Knowing how much an ADA playground would have meant to us and is meaning to others is why we've been passionate about completing Trinity Community Park.



- John & Karla Balk



Sponsorship Levels

TIER 4
BRONZE



Under
\$1,000

Recognition:

SMALL DONATION
PLAQUE

TIER 3
SILVER



\$1,000 -
\$10,000

Recognition:

MEDIUM RECOGNITION ON
SPONSORSHIP SIGNAGE

SOCIAL MEDIA, FACEBOOK,
& NEWSLETTER

TIER 2
GOLD



\$10,000 -
\$75,000

Recognition:

LARGE RECOGNITION ON
SPONSORSHIP SIGNAGE

SOCIAL MEDIA, FACEBOOK
& NEWSLETTER

TABLE AT GRAND OPENING

TIER 1
PLATINUM



\$75,000+

Recognition:

JUMBO RECOGNITION ON
SPONSORSHIP SIGNAGE

SOCIAL MEDIA, FACEBOOK &
NEWSLETTER

TABLE AT GRAND OPENING

OPENING REMARKS AT
GRAND OPENING EVENT

OPPORTUNITY TO DISPLAY
BANNER AT EVENTS



DONATE

Thank You, Sponsors!

PLATINUM

Scheel's Sporting Goods
Katalytic Foundation
Trinity Lutheran Church & Members

GOLD

Honoring Marie West's 100th Bday
Disabling Barriers
Ehrhardt Construction
Town of Monument
Arneson Foundation
Black Hills Foundation

SILVER

Mountain View Electric Association
Tri-Lakes Printing
Infinite Disposal
Integrated Life Choices
Summation Wealth Group
Joslyn Foundation
Classic Homes
Star Playgrounds
Scheiner Construction Group
Red Beards Land Management
VPIX

BRONZE

Monument Pharmacy
Healthy Smile Dental

TRINITY COMMUNITY PARK

In the Press

Groundbreaking THE TRIBUNE

Apr 27, 2023

https://gazette.com/thetribune/monument-church-breaks-ground-on-accessible-community-park/article_005a14de-a619-11ec-a88a-3f60efaf1271.html

Grand Opening Phase 1

FOX 21

Aug 25, 2022

<https://www.fox21news.com/news/accessible-park-grand-opening-in-monument/>

Grand Opening Phase 1 & Phase 2 Coming

GAZETTE/TRIBUNE

Sept 6, 2023

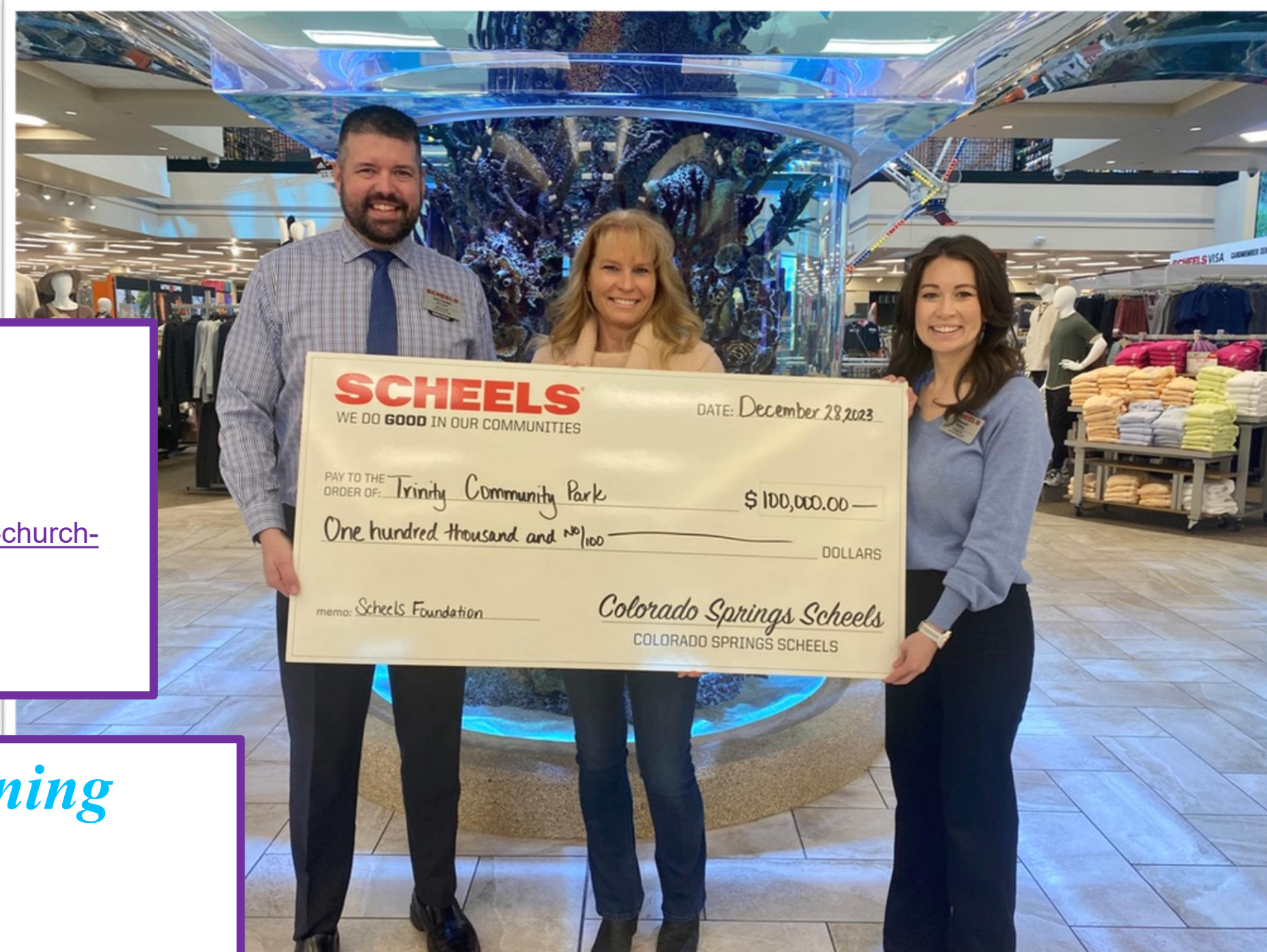
https://gazette.com/thetribune/trinity-community-park-expands-with-new-accessible-playground-equipment/article_e721121c-6082-11ee-b5b3-17d67c6efea9.amp.html

Phase 2 Build

THE TRIBUNE

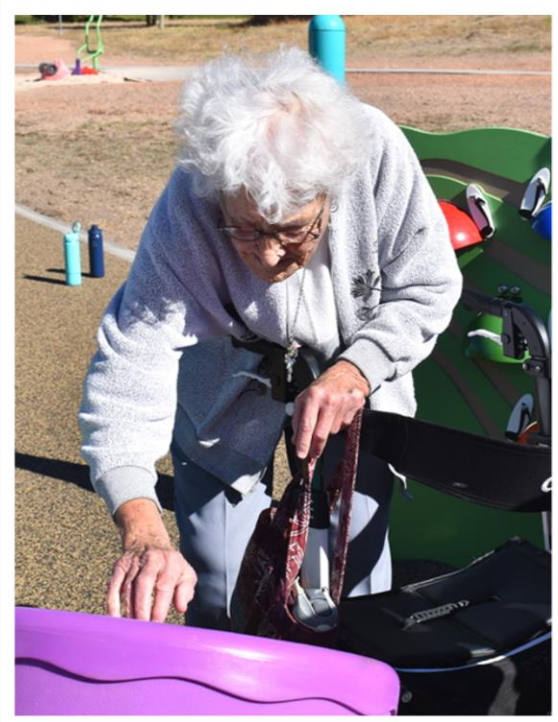
Oct 9, 2023

https://gazette.com/thetribune/trinity-community-park-expands-with-new-accessible-playground-equipment/article_e721121c-6082-11ee-b5b3-17d67c6efea9.amp.html



TRINITY
COMMUNITY
PARK

Photo
Gallery





Tamara & Drew say

Thank You

<http://trinitymonument.org/trinity-community-park>



DONATE

