

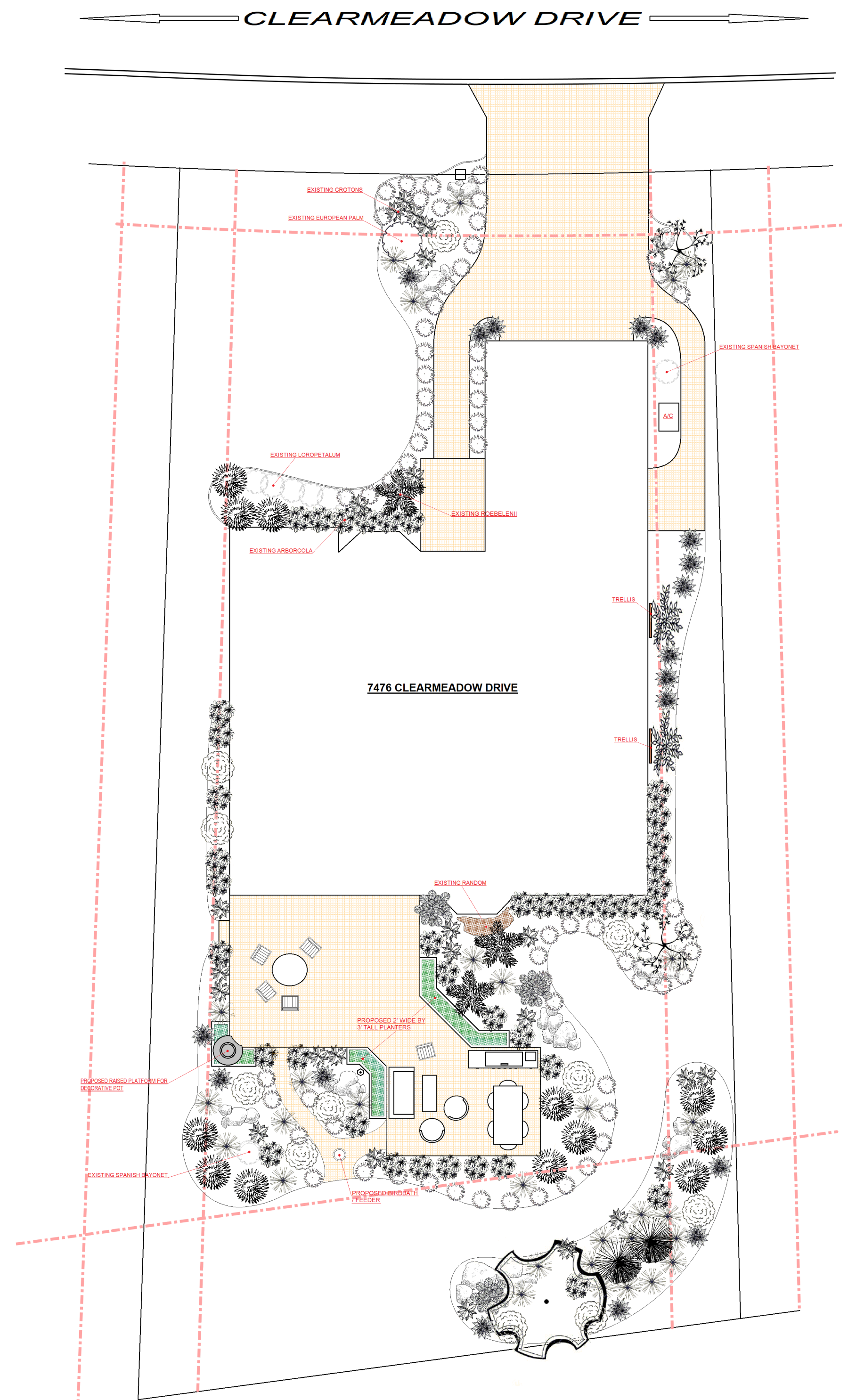
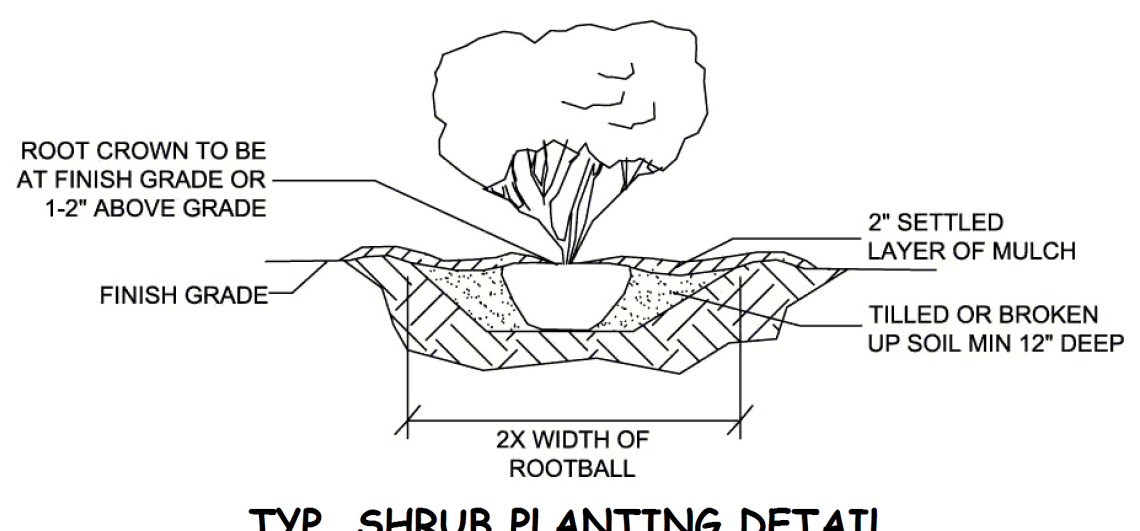
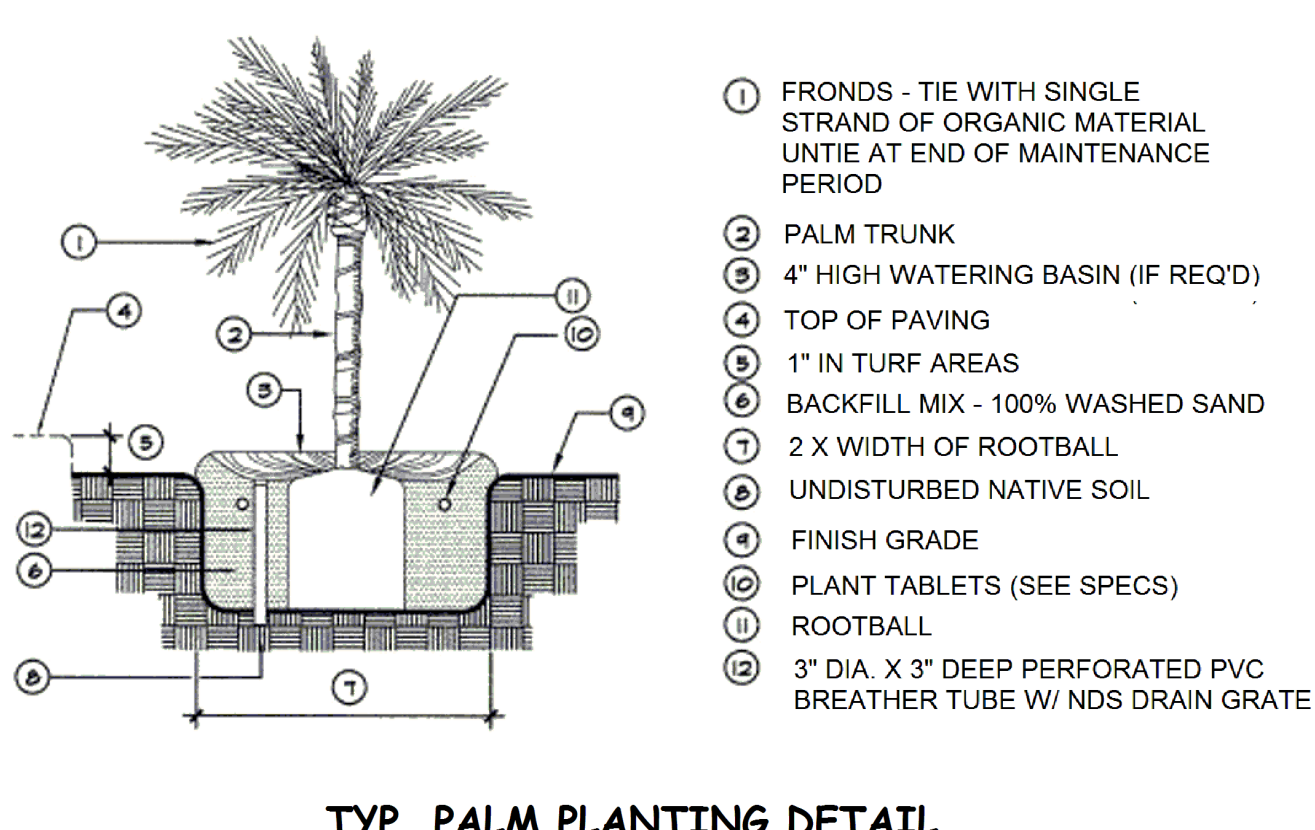
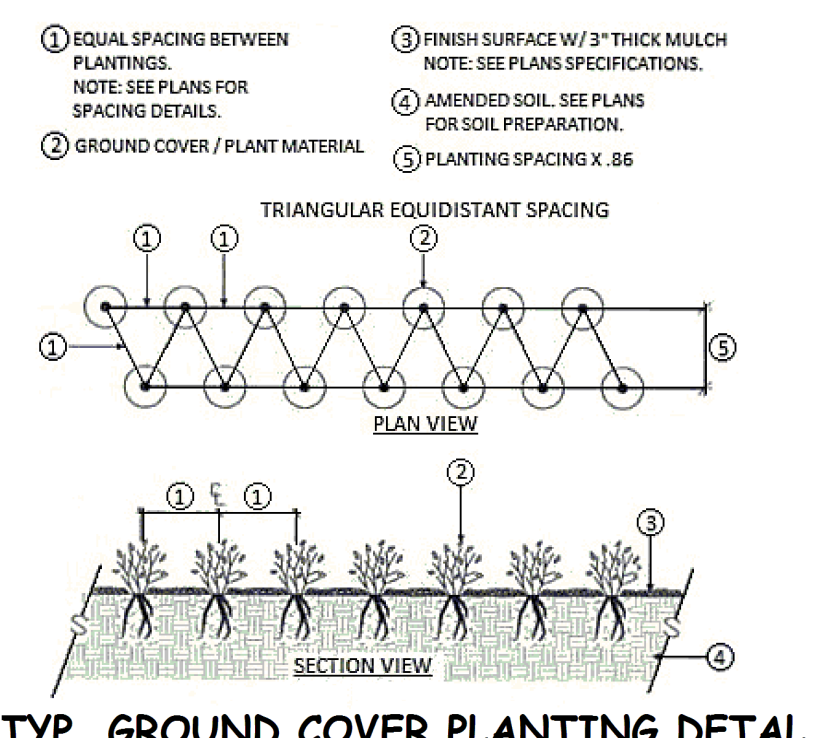
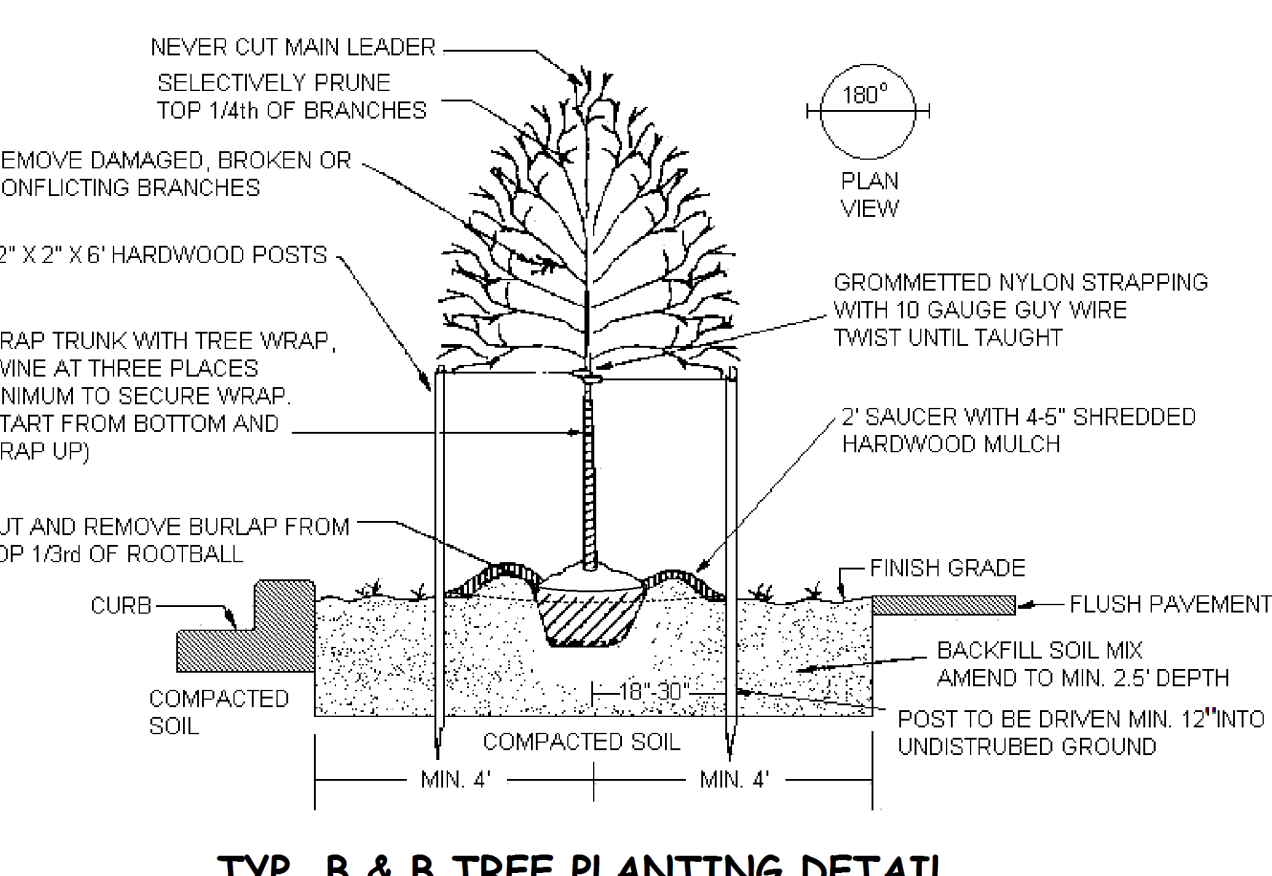
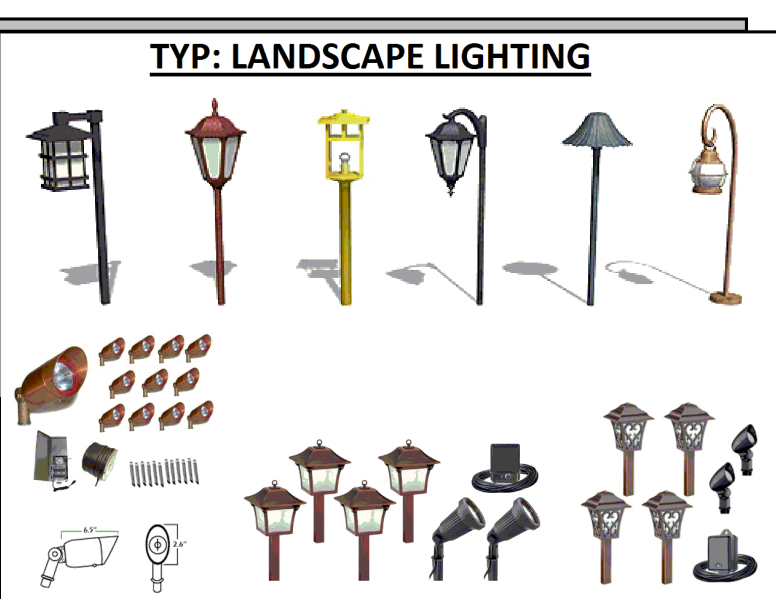
- GENERAL PLANTING GUIDELINES**
- All plants must be healthy, vigorous material, free of pests & diseases & Florida #1 grade or better, unless otherwise indicated.
 - All plants must be container grown or balled & burlapped (B&B) as indicated in the plant list.
 - All trees must be straight trunked, full-headed & meet all requirements specified.
 - All plants are subject to approval of the landscape designer & property owner before, during, & after installation until the date of the final acceptance.
 - All trees are to be guyed or staked as instructed by designer.
 - All plants & planting areas must be completely mulched to a minimum depth of 3" using Fine Bark mini nugget.
 - Prior to construction, the landscape contractor shall be responsible for locating all underground utilities, structure, site appurtenances, etc. that is or could be effected by the landscape construction.
 - The landscape contractor is responsible for verifying all quantities shown on these plans.
 - The landscape contractor is responsible for maintaining all plantings (including, but not limited to: watering, spraying, mulching, fertilizing, etc.) of planting areas and lawns until the work is accepted in total by the landscape designer and the owner.
 - Any plant material which dies, runs brown or defoliates (prior to total acceptance of the work) shall be promptly removed from the site and replaced with material of the same species, quantity, size, and meeting all plant list specifications. Normal plant material shall be warranted for a period of 3 months after completion. Palms and trees shall be warranted for (1) year. Warranty period starts after latest replacement is accepted.
 - All disturbed areas of existing sod, shall be re-sodded, sod type to be St. Augustine Floratam if existing sod cannot be determined.
 - Landscape contractor shall verify the plant quantities. Plant symbols on the landscape construction plan supersede quantities in the plant list.
 - In size grading B&B trees, caliper shall take precedence over height.
 - In size grading multi-stem trees, height shall take precedence over caliper.
 - All mulch (Fine Bark Mini Nugget) to be approved by the landscape designer and the owner. Provide samples to the landscape designer for review and approval prior to installation of mulch. Mulch shall be free of foreign debris or deleterious material. Mulch shall not be treated with any compound harmful to plants or wildlife.
 - All existing plant material not shown on this landscape plan is subject to removal and to be included in services of the landscape contractor. All existing plant material to be salvaged will be established during the preliminary walkthrough with the landscape designer and owner representative - all plant material marked in orange plan to be removed by landscape contractor. Approval of all existing vegetation to be removed is required by the landscape designer and property owner representative prior to removal.
 - Excessive plant material shown on plan and not installed shall be deducted from final invoice.

GUIDE FOR ESTIMATING AND PLANTING

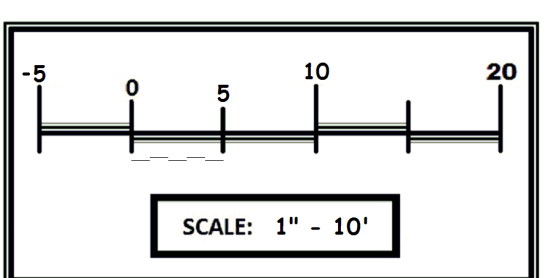
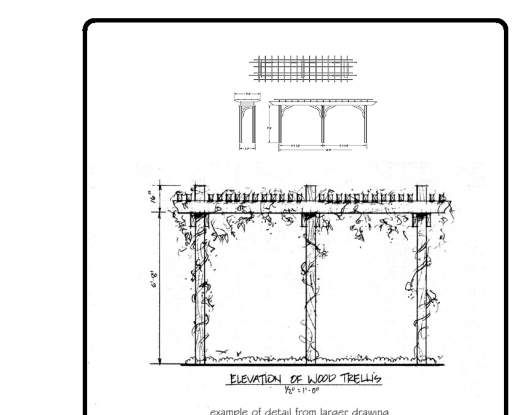
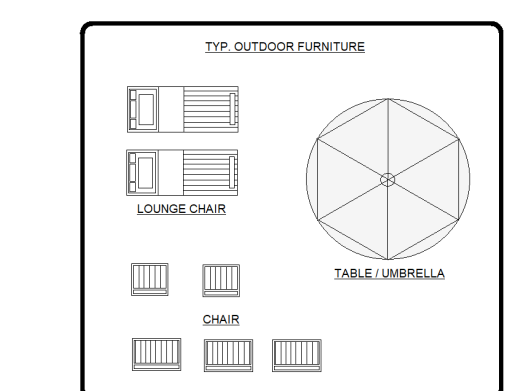
Inches Apart	32 Plants	64 Plants	100 Plants
6"	8 sq. ft.	16 sq. ft.	25 sq. ft.
8"	14 sq. ft.	28 sq. ft.	44 sq. ft.
10"	22.5 sq. ft.	45 sq. ft.	70 sq. ft.
12"	32 sq. ft.	64 sq. ft.	100 sq. ft.
15"	50 sq. ft.	100 sq. ft.	156 sq. ft.
18"	72 sq. ft.	144 sq. ft.	225 sq. ft.
24"	128 sq. ft.	256 sq. ft.	400 sq. ft.

FORMULAS TO DETERMINE SQUARE FEET

Circles: Area=Diameter squared X 0.7854
Triangles: Area=1/2 X Height
Rectangle: Area=Base X Height



SYMBOL	SYM	QTY	BOTANICAL NAME / COMMON NAME	SIZE	COMMENTS	NOTES
	*	3 TON	Boulders - 10XL, 22MED, 28SM	3 TON		
	**	16 yds	Dark Chocolate Mulch	16 YDS		
	***		Edging - Homeowner Choice			
	AA	60	Agapanthus africanus / Lily of The Nile	3 gal.	18" O.C.	
	CC	19	Croton Codiaeum variegatum 'Mammy' / Mammy Croton	3 gal.	AS Shown	
	CS	18	Cordyline spp. / Red Sister Ti Plant	3 gal.	5' O.C.	
	HA	3	Hibiscus acetosella / Cranberry Hibiscus	7 gal.	AS Shown	
	HP	14	Hamelia patens / Dwarf Firebush	3 gal.	AS Shown	
	IC	12	Cupressus sempervirens / Italian Cypress	15 gal.	AS Shown	
	LM	2	Lagerstroemia indica muskogee / Lavender Crape Myrtle	30 gal.	AS Shown	
	MU	28	Muhlenbergia / Muhly Grass	3 gal.	AS Shown	
	PG	2	Cortaderia selloana / Pampas Grass	7 gal.	AS Shown	No Pot
	PR	2	Phoenix roebelenii pygmy / Pygmy Date Palm Roebelini (triple trunk)	30 gal.	AS Shown	TRIP
	RB	1	Cercis canadensis / Red Bud Tree	30 gal.	AS Shown	
	SA	32	Schefflera arboricola variegatum / Variegated Arborcola 'Delight'	3 gal.	36" O.C.	
	TJ	4	Trachelospermum jasminoides / Confederate Jasmine	3 gal.	Base Of Trellis x2	2 ea



CALL 48 HOURS BEFORE YOU DIG
It's the Law!
1-800-432-4770
SUNSHINE STATE ONE CALL OF FLORIDA, INC.



REVISIONS

REVISIONS	BY
KNUTSON 9.14.2020	DD

MASTER LANDSCAPE PLAN
KNUTSON RESIDENCE
7476 CLEARMEADOW DRIVE
SPRING HILL, FL 34606

AWARD WINNING FLORIDA-FRIENDLY LANDSCAPE DESIGN SERVICE

Dameron Designs.com
Architectural Landscape Design & Consultation
(352)835-4012

ARCHITECT
D. DAMERON

CHECKED
NAOMI

DATE
08/12/2020

SCALE
1" = 10'

JOB NO.
20-0008

SHEET NO.

OF SHEETS