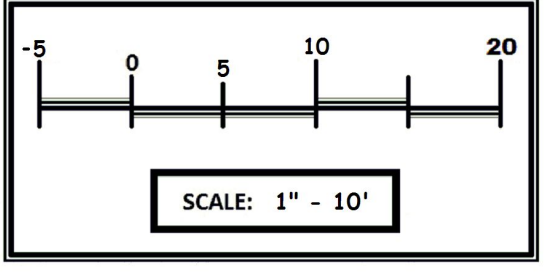
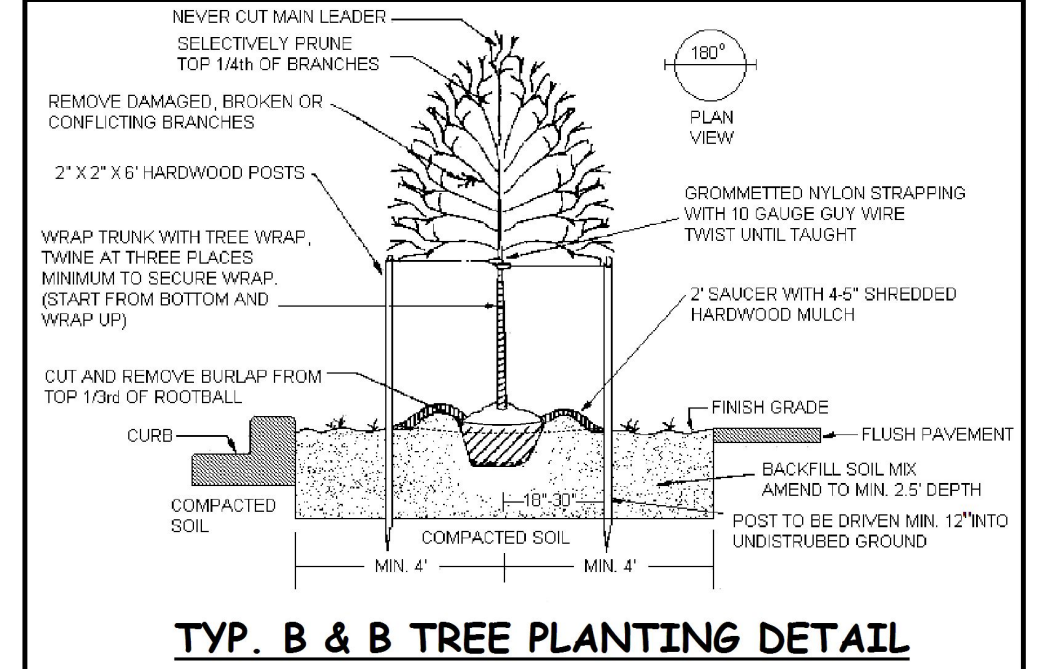
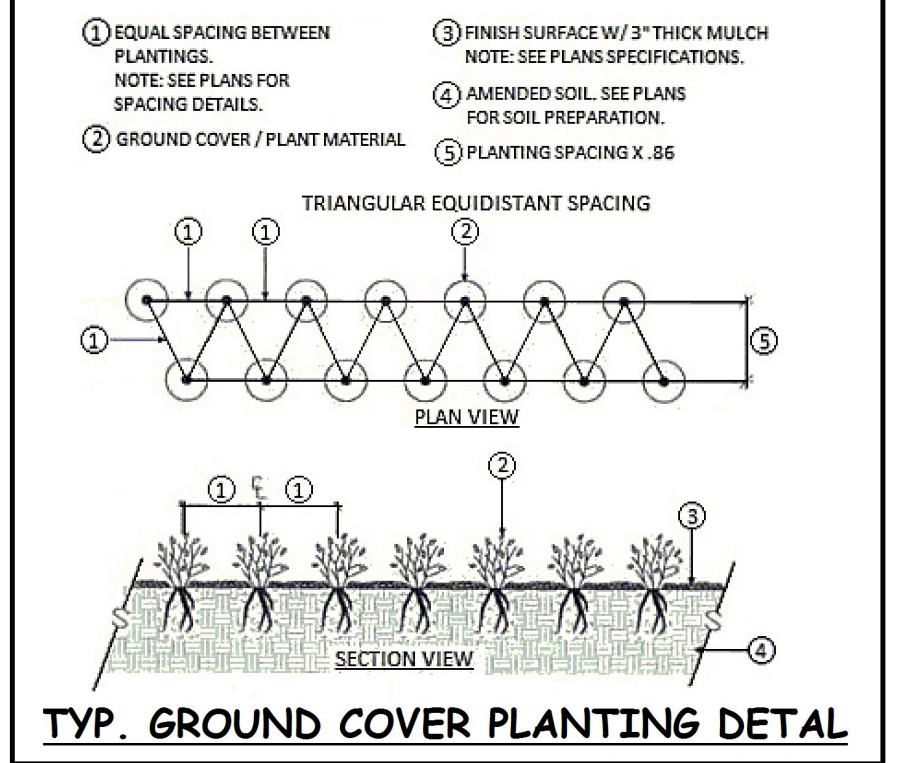
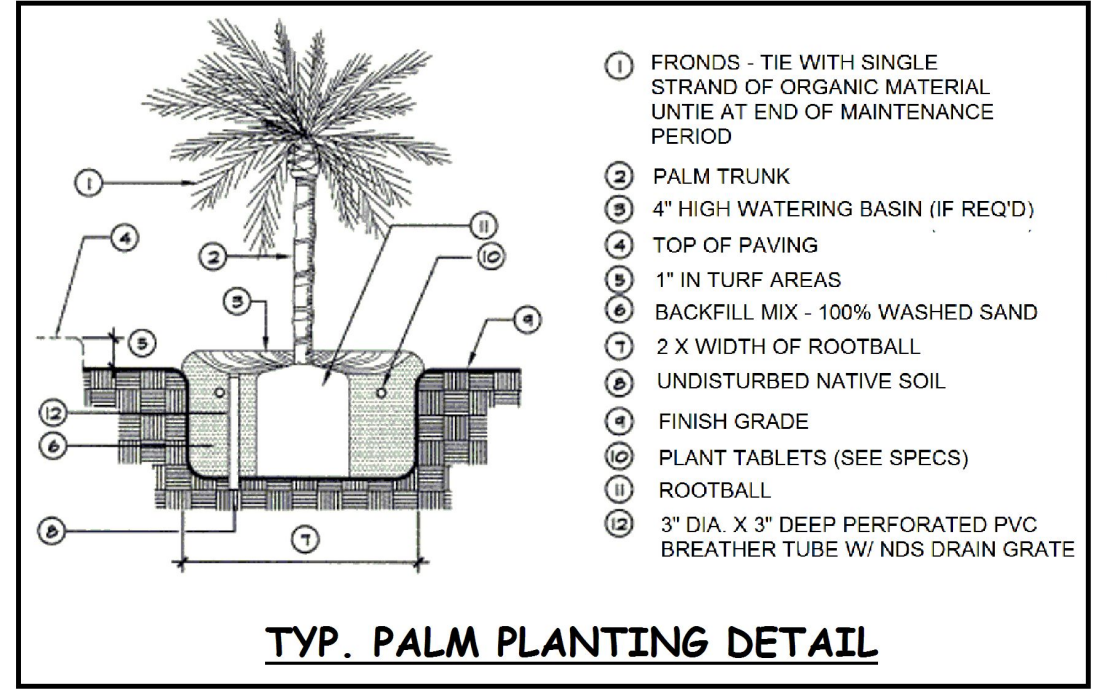
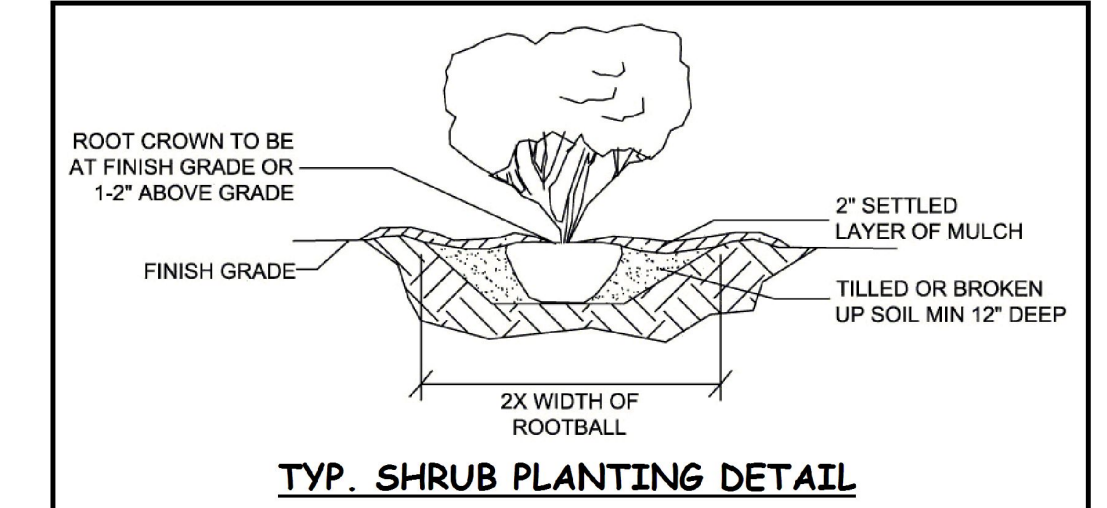
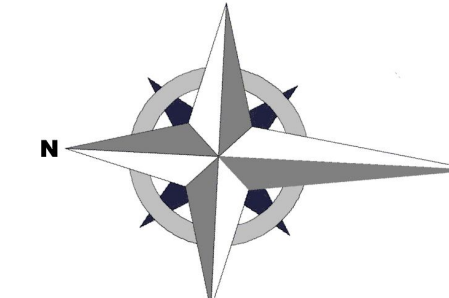
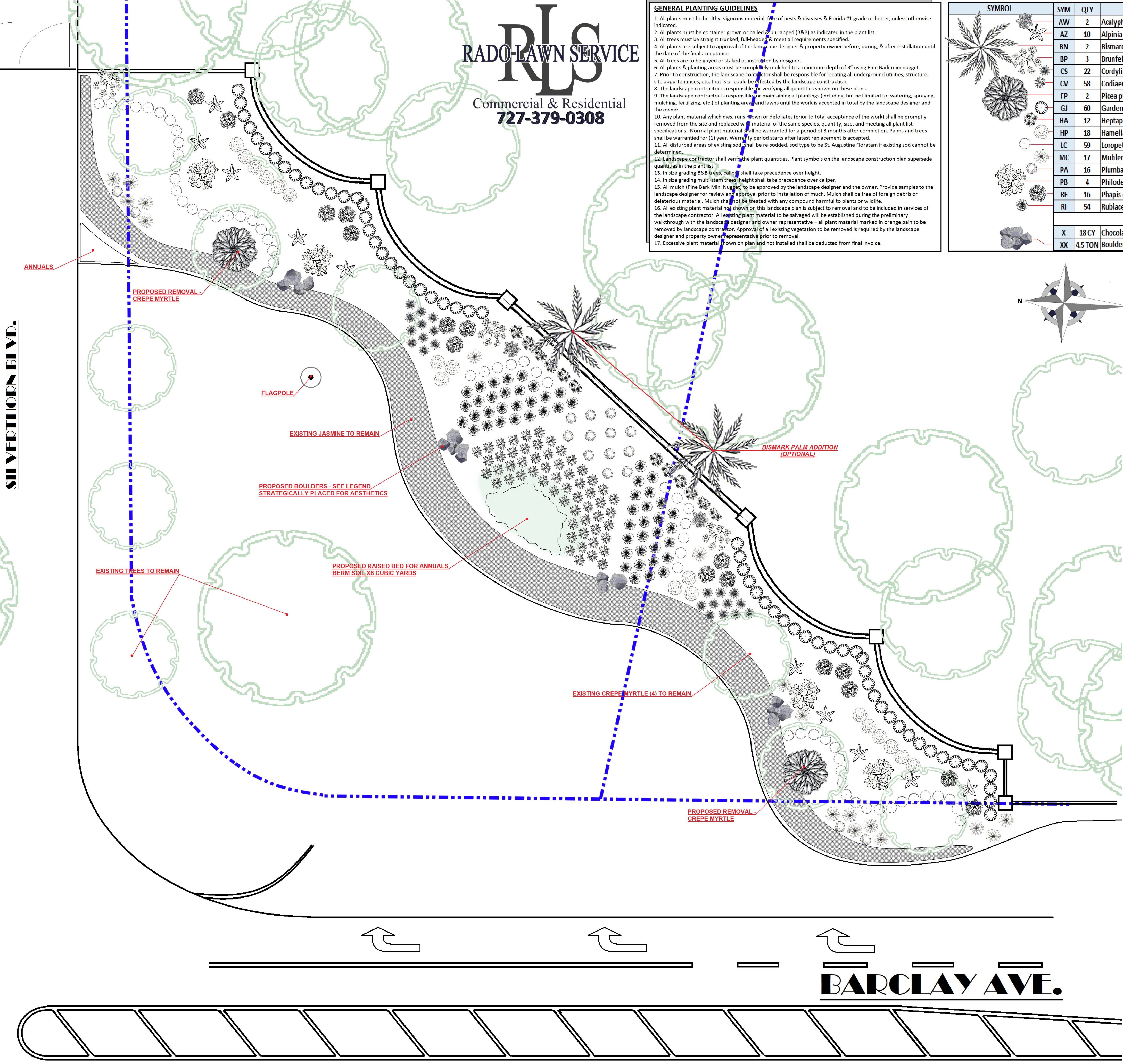


GENERAL PLANTING GUIDELINES

1. All plants must be healthy, vigorous material, free of pests & diseases & Florida #1 grade or better, unless otherwise indicated.
2. All plants must be container grown or balled & burlapped (B&B) as indicated in the plant list.
3. All trees must be straight trunked, full-headed & meet all requirements specified.
4. All plants are subject to approval of the landscape designer & property owner before, during, & after installation until the date of the final acceptance.
5. All trees are to be guyed or staked as instructed by designer.
6. All plants & planting areas must be completely mulched to a minimum depth of 3" using Pine Bark mini nugget.
7. Prior to construction, the landscape contractor shall be responsible for locating all underground utilities, structure, site appurtenances, etc. that is or could be affected by the landscape construction.
8. The landscape contractor is responsible for verifying all quantities shown on these plans.
9. The landscape contractor is responsible for maintaining all plantings (including, but not limited to: watering, spraying, mulching, fertilizing, etc.) of planting areas and lawns until the work is accepted in total by the landscape designer and the owner.
10. Any plant material which dies, runs brown or defoliates (prior to total acceptance of the work) shall be promptly removed from the site and replaced with material of the same species, quantity, size, and meeting all plant list specifications. Normal plant material shall be warranted for a period of 3 months after completion. Palms and trees shall be warranted for (1) year. Warranty period starts after latest replacement is accepted.
11. All disturbed areas of existing sod shall be re-sodded, sod type to be St. Augustine Floratam if existing sod cannot be determined.
12. Landscape contractor shall verify the plant quantities. Plant symbols on the landscape construction plan supersede quantities in the plant list.
13. In size grading B&B trees, caliper shall take precedence over height.
14. In size grading multi-stem trees, height shall take precedence over caliper.
15. All mulch (Pine Bark Mini Nugget) to be approved by the landscape designer and the owner. Provide samples to the landscape designer for review and approval prior to installation of mulch. Mulch shall be free of foreign debris or deleterious material. Mulch shall not be treated with any compound harmful to plants or wildlife.
16. All existing plant material shown on this landscape plan is subject to removal and to be included in services of the landscape contractor. All existing plant material to be salvaged will be established during the preliminary walkthrough with the landscape designer and owner representative - all plant material marked in orange pain to be removed by landscape contractor. Approval of all existing vegetation to be removed is required by the landscape designer and property owner representative prior to removal.
17. Excessive plant material shown on plan and not installed shall be deducted from final invoice.

SYMBOL	SYM	QTY	BOTANICAL NAME / COMMON NAME	SIZE	COMMENTS	NOTES
	AW	2	<i>Acalypha wilkesiana</i> / Copper Plant, Copperleaf	7 gal.	As Shown	
	AZ	10	<i>Alpinia zerumbet</i> 'Variegata' / Variegated Shell Ginger	7 gal.	As Shown	
	BN	2	<i>Bismarckia nobilis</i> / Bismarck Palm (OPTIONAL)	B&B	min 16' O.A.	all matching
	BP	3	<i>Brunfelsia pauciflora</i> / Yesterday, Today & Tomorrow	30 gal.	As Shown	
	CS	22	<i>Cordyline spp.</i> / Red Sister Croton	3 gal.	36" O.C.	
	CV	58	<i>Codiaeum variegatum</i> / Curly Boy Croton	3 gal.	30" O.C.	
	FP	2	<i>Picea pungens</i> / Florida Blue Spruce	B&B	10' min height	all matching
	GJ	60	<i>Gardenia jasminoides</i> / Cape Jasmine	7 gal.	36" O.C.	
	HA	12	<i>Heptapleurum arboricola</i> / Variegated Scheffler's Arborcola	3 gal.	36" O.C.	
	HP	18	<i>Hamelia patens var. glabra</i> / Dwarf Firebush	3 gal.	36" O.C.	
	LC	59	<i>Loropetalum chinense</i> 'Chang Nian Hong' / Ever Red Fringe Flower	3 gal.	36" O.C.	
	MC	17	<i>Muhlenbergia capillaris</i> / Muhly Grass	3 gal.	As Shown	
	PA	16	<i>Plumbago auriculata</i> / Royal Blue Blubago	3 gal.	60" O.C.	
	PB	4	<i>Philodendron bipinnatifidum x 'lundii'</i> / Dwarf Philodendron Selloum	7 gal.	As Shown	
	RE	16	<i>Phapis excelsa</i> / Lady Palm	7 gal.	36" O.C.	
	RI	54	<i>Rubiaceae Ixora Coccinea</i> / Maui Orange Ixora (dwarf)	3 gal.	30" O.C.	
	X	18 CY	Chocolate Shredded Mulch	18 CY	Min 3" Thick	
	XX	4.5 TON	Boulders (6LG, 18MED, 20SM) Charcoals, Grays, Blacks, Whites	4.5 TON	Gray Tones - Hand Picked	Special



CALL 48 HOURS BEFORE YOU DIG
It's the Law!
 1-800-432-4770
 SUNSHINE STATE ONE CALL OF FLORIDA, INC.

REVISIONS	BY

MASTER LANDSCAPE PLAN
SILVERTHORN COMMUNITY - MAIN ENTRANCE - SOUTH
 4400 MALLARD LAKE DRIVE, SPRING HILL FL 34609



Dameron Designs.com
 Architectural Landscape Design & Consultation
 (352)835-4012

ARCHITECT
D. DAMERON
 CHECKED
 N.D.
 DATE
 7/12/2023
 SCALE
1" = 10'
 JOB NO.
 23-0016-2
 SHEET NO.

L - III
 OF 3 SHEETS

