

# EXCLUSIVE FAMILY ESTATE



680 Old Connecticut Path Framingham MA 01701



6 bedrooms



5 bathrooms



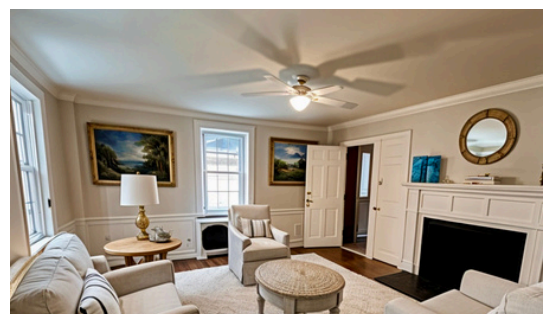
3 car garage



swimming pool



guest house



SUZETTE COOPERSTEIN

508-523-4171

[WWW.680OLDCONNECTICUTPATH.INFO](http://WWW.680OLDCONNECTICUTPATH.INFO)





# SPACIOUS FAMILY LIVING



- Six spacious rooms on the first floor, including 1.5 baths and four fireplaces
- Expansive eat-in kitchen with custom cabinetry, large walk-in pantry, breakfast bar, beamed ceiling, quartz countertops, wood-burning fireplace, ceiling fan and recessed lights
- Rear mudroom entry off kitchen with tiled flooring, bow window with seating and a full bathroom
- Formal dining room includes a fireplace, custom built-in cabinetry, chair rail, and original exposed beamed ceiling
- Elegant formal living room features a fireplace, ceiling fan, chair rail, and wainscoting
- Cozy library movie room with a beehive fireplace, wood fire pizza oven, beamed ceiling, recessed lighting, ceiling fan, convenient access to the large wood shed, and double doors to the game room
- Billiards game room with recessed lighting, a walk-out bow window, ceiling fan, wet bar, half bath, stairway to the second floor, and outdoor access to a brick patio
- Family room features a ceiling fan, bow window with seating, recessed lighting, custom closets and access to a screened outdoor kitchen and entertainment area overlooking beautifully landscaped grounds



SUZETTE COOPERSTEIN

508-523-4171

[WWW.68OOLDCONNECTICUTPATH.INFO](http://WWW.68OOLDCONNECTICUTPATH.INFO)





# BEDROOMS & ROOFTOP RETREAT



- Second floor offers five to six bedrooms, two full bathrooms, and access to a rooftop deck
- Primary bedroom includes a fireplace, ceiling fan, chair rail, crown molding and features a walk-in closet or adjoining bedroom
- Second bedroom or walk-in closet includes a fireplace, built-ins, ceiling fan, and closet
- Third bedroom front facing features a fireplace and two closets
- Fourth bedroom pool facing with ceiling fan and custom closet
- Large fifth bedroom off the rear stairwell features built-ins and a closet
- Sixth bedroom offers closet space and French door to the rooftop deck
- Dedicated second-floor laundry room with ample cabinetry



SUZETTE COOPERSTEIN

508-523-4171

[WWW.680OLDCONNECTICUTPATH.INFO](http://WWW.680OLDCONNECTICUTPATH.INFO)





# STUNNING OUTDOOR LIVING



- Breathtaking landscaped grounds include brick pathways, stone walls, benches, picnic tables, and kids play area
- Four outbuildings: garden shed with sink, pool storage shed, equipment shed, and a large wood shed
- Brick patio surrounding a picturesque in-ground pool
- Backyard games include a basketball hoop, horseshoe pit, and volleyball floor sleeves
- Multiple entertainment areas including an outdoor kitchen with tv and fireplace with patio



SUZETTE COOPERSTEIN

508-523-4171

[WWW.680OLDCONNECTICUTPATH.INFO](http://WWW.680OLDCONNECTICUTPATH.INFO)

