

INDIA'S #1 GENSET BRAND

UHHP GENSET
750 - 1500 kVA



India's first IOT enabled Genset
The Complete Power Back-up Solution

EFFICIENCY HAS A NEW NAME

Ultra High Horse Power

karloskar
GREEN

750 - 1500 kVA

Prime Rating at rated rpm (as per ISO8528) ¹		kVA	750 HD	900 HD	1010 HD	1250 HD	1500 HD
		kW	600	720	808	1000	1200
Genset Model			KG1-750WS	KG1-900WS	KG1-1010WS	KG1-1250WS	KG1-1500WS
Frequency		Hz	50				
Power factor		lagging	0.8				
Voltage		V	415 3Ø				
Governing class (As per ISO 8528 Part-V)			G3				
DG set Noise level at 1Mtr with Genset Canopy		dBA	≤ 75		Contact Kirloskar Oil Engines Ltd. for Details		
Fuel Consumption*	At 100 % Load	Ltrs/hr	154	197	199	250	310
	At 75 % Load		126.4	163	155	189	230
	At 50 % Load		89.7	120	112	134	157
Fuel tank capacity		Ltrs	990	990	990	880	880
Weight of genset with canopy (approx.) [§]	Dry	Kg	8300	13600	13200	13075 ⁺	
Overall dimensions of genset [^]	Length	mm	6800	8000	7800	5650 ⁺	
	Width	mm	2300	2300	2300	2300 ⁺	
	Height	mm	2713	2713	2713	2680 ⁺	
Electrical Battery starting voltage		Volts-DC	24				
ENGINE							
Engine Model (Parent Engine)			DV12ETA	DV16ETA	DV16ETA	12K4300-E2	12K4300-E1
Rated output (Prime Continuous rating as per ISO 3046)		kW	663	799	889	1090	1294
		HP	901	1086	1210	1482	1760
No. of cylinder		Number	12	16		12	
Cubic capacity ²		Ltrs	23.88	31.84		51.73	
Bore x Stroke		mm	130 x 150			170 x 190	
Rated Speed		RPM	1500				
Aspiration		NA/TC/TA	TA				
Lube Oil change period		hrs	500				
Lube Oil Sump Capacity		Ltrs	73	130	130	265	
Coolant Capacity with Radiator		Ltrs	175	180	180	210	
ALTERNATOR							
Insulation Class			Class H				
Ingression Protection			IP 23				
Alternator Efficiency (at 100% load) 0.8 pf*			94.6	95.3	95.1	95.7	95.4
Alternator Efficiency (at 75% load) 0.8 pf*			94.9	95.5	95.4	95.9	95.8
Permissible Voltage Dip at Full Load 0.8 pf Lag			≤ 20 %				
Time Permitted to build up rated voltage at rated RPM			< 1 sec, provided engine should reach rated RPM				
Short Circuit Withstand Time		sec	3 Times rated current for “10 sec”				
Overload Withstand Capacity		%	10% overload for one hour once in 12 hours				

Notes

^ Tolerances Apply

With 0.845 Specific Gravity of diesel (5% Tolerance)

§ These Weight are for handling & transportation only, +- 5 % tolerance apply

* Efficiency of Alternator as per standards IEC60034-1

+ Weight & dimensions are for open genset

For canopised genset, please contact kirloskar Oil Engines Ltd.

For Site Conditions other than standard operating conditions consult Kirloskar Oil Engines Ltd.

For intermediate ratings, kindly contact nearest Kirloskar office

7 Easy steps for a happy Genset Ownership

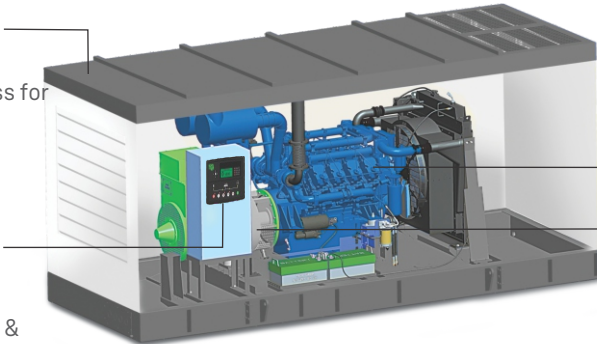
- Insist on a load-study
 - Select the Genset rating as per the load-study and with sufficient margin for future load expansion
 - Apply site-selection guidelines carefully
 - Insist on installation in line with Kirloskar Green guidelines
- Ensure adequate size and proper connection of cables
 - Understand the Genset operation & maintenance procedures during commissioning
 - Follow routine maintenance protocols through authorized Kirloskar Green service dealers

Canopy

- Ease of Access and Serviceability
- Aesthetically designed, weather and sound resistant enclosure
- Insulation conforms to UL94-HF1 class for flammability

Controller

- Microprocessor based
- Graphical LCD display
- Best in class monitoring and diagnostic capability
- Integrable with AMF, synchronization & communication configurations



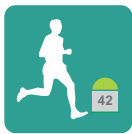
Engine

- O2E Series: Low emission, high efficiency engines
- Compact, Robust and Rugged Design
- 500 hours lube-oil change period
- Integral set - mounted radiator system, designed & tested for 50°C ambient temperature

Alternator

- Best In Class Efficiency
- Special Windings to Reduce Harmonics
- Vacuum Pressure Impregnation and epoxy gel coating on the winding

Prime rating and Stand-by rating¹



'Prime power' is designed for Unlimited hours, as compared to 'Emergency stand-by' designed for 200 hours in a year. Prime rated Gensets also permit 10% temporary overloading. Users need to carefully select the Genset rating to meet their requirement. Kirloskar offers Prime power as a standard offer. Contact Kirloskar for stand-by ratings.

Engine capacity does matter²



Engine capacity (cc) plays a vital role in Genset performance. Higher engine capacity leads to a robust and stable Genset performance.

Higher engine capacity also enables the Genset to respond quickly & positively to sudden load additions.

Best-in-class Fuel Efficiency



Kirloskar Green Gensets offer a unique combination of CPCB norm compliance and enhanced fuel efficiency. Across the range, Kirloskar Green Gensets offer substantial savings in fuel cost.

O2E Series (Optimal Operating Efficiency):

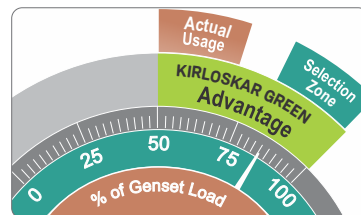
Genset ratings are selected based on the present load and future expansion. Fuel efficiency of most Gensets is optimized at the full rating of the Genset.

In practice, Gensets rarely get loaded to full capacity. Power demand variations across day & night, weekdays & weekends,

summer & winter lead to an average 50-70% loading on Gensets.

Considering this practical situation, Kirloskar has extended fuel efficiency optimization from 100%, right up to 50% of rated load.

Combination of best-in-class fuel efficiency & O2E provides a double advantage.



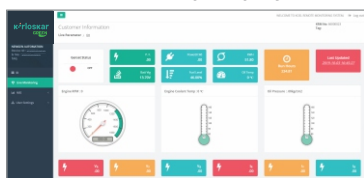
Genset Monitoring at Your Finger Tips



Kirloskar Green gensets are enabled with Kirloskar remote monitoring system which shares Real Time Genset information and location Services. It can be accessed via mobile device or desktop. Kirloskar remote monitoring

system also highlights any parameter which needs special attention. These critical indication alerts are sent to user mobile via text message. It also alerts nearest services dealer in case of any emergency break-down.

KRM Desktop Display



Ask your Dealer for KRM login details & password

Peace-of-mind Ownership



Kirloskar Green Gensets have always been preferred for their robust design and reliability over long usage life.

Kirloskar Green range carries the confidence of well-established and proven engine platforms. For compliance to revised CPCB norms, Kirloskar has carefully selected those technologies which not only retain, but enhance Gensets durability and on-site serviceability.

Thus, Kirloskar Gensets offer you many years of trouble-free performance; backed by the assurance of prompt support. Peace-of-mind driven by product reliability and low cost of ownership.

State of the art Genset Controller



Kirloskar Green Genset put the command in your hands. Micro-processor based Genset controllers display a host of genset parameters and put all controls at your fingertips.

Monitoring Features:

- Phase Voltages & Currents, Frequency, Reverse power, Genset kVA, kW, kWh, kVAR, Power Factor, Canopy Temperature
- Lube oil Pressure, Engine Temperature, RPM, Run Hours, Number of starts, Fuel Level, Auto / Manual Stop, Battery charge condition, AMF feature

Diagnostic Features:

- Battery charging failure, Over/Under speed, Over Current, Over/Under Voltage, Over kW, Phase Seq., Phase missing, Mains Under voltage, Earth Fault trip, Fuel usage Alarm
- Low lube oil Pressure, High Engine Temperature, Low/High battery voltage, Low Fuel Level, Over Crank protection, Routine maintenance indicator, Genset Test Facility, Mains Frequency

Optional Features:

- Modbus Communication
- Synchronization

Genset Controller



EFFICIENCY. INTEGRATED

A KIRLOSKAR PROMISE

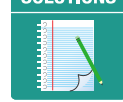
Efficient Products

- India's first IoT enabled digital genset
- Designed for convenient user experience
- Best-in-class fuel efficiency delivered
- Compact design & long life product
- Optimized consumption of lubricant oil
- Optimized total cost of ownership (TCO)
- All products tested before delivery

EFFICIENT PRODUCTS



EFFICIENT SOLUTIONS



Efficient Solutions

- Load sizing for every single genset order
- One stop power back-up solutions
- Serves complete application gamut
- Highly trained & experienced team
- Non-conventional solutions (bio-diesel)
- Specific solution for harsh environments
- Exhaust mgmt., foundation, cabling etc.

Efficient Service

- India's widest service dealer network
- Kirloskar connect-self-service application
- eFSR-Electronic field service report
- Over 6000 trained service engineers
- Over 600,000 machines under care
- 98%+ parts available at each outlet
- Flexible & economical AMC-Bandhan

EFFICIENT SERVICE



EFFICIENT NETWORK



Efficient Network

- Consistent, reliable & long-established
- 250+ expert touch points across India
- 500+ solution oriented professionals
- Uniform customer experience across
- Central system for enquiry to PRF
- Fair trade practices & Price transparency

Efficient Deliveries

- Cost-effective deliveries guaranteed
- Assured 7-day delivery of gensets
- Supports project management system
- Reduced working capital for customer
- Award-winning replenishment model
- Assurance of FRESH products always

EFFICIENT DELIVERIES



EFFICIENT 24X7 CARE



Efficient 24X7 Care

- 24 X 7 operational customer care centre
- Team of over 70 trained & focused exec.
- Tracking every service request till closure
- Centrally maintained CRM for all requests
- Satisfaction call after every SR closure
- Central sales lead tracking system
- Continuous NPS and CDI measurement

Infrastructure



Mobility



Industry



IT & ITes



kirloskar
Oil Engines

www.koel.kirloskar.com

Kirloskar Oil Engines Limited

A Kirloskar Group Company

Laxmanrao Kirloskar Road, Khadki,
Pune 411 003 INDIA.



88 06 33 44 33

koel.helpdesk@kirloskar.com



Stamp of
Authorised
Representative