

Quality Child Care

Quality child care offers healthy, social, and educational experiences under qualified supervision in a safe, nurturing, and stimulating environment. Children in these settings participate in daily, age-appropriate activities that help develop essential skills, build independence and instill self-respect.

When evaluating the quality of a child care setting, the following indicators should be considered:

Quality Caregivers

- ✓ Are friendly and eager to care for children.
- ✓ Accept family cultural and ethnic differences.
- ✓ Are warm, understanding, encouraging, and responsive to each child's individual needs.
- ✓ Use a pleasant tone of voice and frequently hold, cuddle, and talk to the children.
- ✓ Help children manage their behavior in a positive, constructive, and non-threatening manner.
- ✓ Allow children to play alone or in small groups.
- ✓ Are attentive to and interact with the children.
- ✓ Provide stimulating, interesting, and educational activities.
- ✓ Demonstrate knowledge of social and emotional needs and developmental tasks for all children.
- ✓ Communicate with parents.

Quality Environments

- ✓ Are clean, safe, inviting, comfortable, and child-friendly.
- ✓ Provide easy access to age-appropriate toys.
- ✓ Display children's activities and creations.
- ✓ Provide a safe and secure environment that fosters the growing independence of all children.

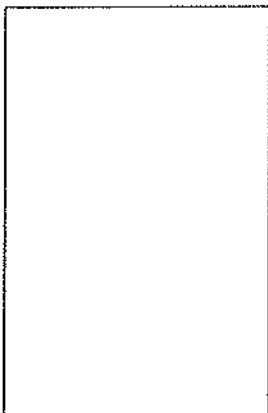
Quality Activities

- ✓ Are children initiated and teacher facilitated.
- ✓ Include social interchanges with all children.
- ✓ Are expressive including play, painting, drawing, story telling, music, dancing, and other varied activities.
- ✓ Include exercise and coordination development.
- ✓ Include free play and organized activities.
- ✓ Include opportunities for all children to read, be creative, explore, and problem-solve.



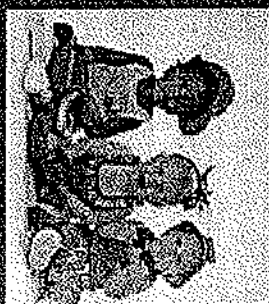
To report suspected or actual cases of child abuse or neglect, please call the Florida Abuse Hotline at 1-800-962-2873.

For additional information, please visit www.myflorida.com/childcare or contact your local licensing office below:

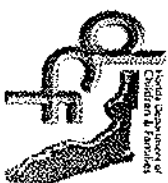


CF/PI 175-24, 10/2007

This brochure was created by the Department of Children and Families, Child Care Program Office pursuant to s. 402.3125(5), F.S..



Know Your Child Care Facility



Licensing Standards

This child care facility is licensed according to the minimum licensure standards included in section 402.305, Florida Statutes (F.S.), and Chapter 65C-22, Florida Administrative Code (F.A.C.).

License Number: _____

License issued on ____/____/____

License Expires on ____/____/____

For more information regarding the compliance history of this child care provider, please visit: www.myflorida.com/childcare.

Every licensed child care facility must meet the minimum state child care licensing standards pursuant to s. 402.305, F.S., and ch. 65C-22, F.A.C., which include, but are not limited to, the following:

General Requirements

- ✓ Valid license posted for parents to see.
- ✓ All staff appropriately screened.
- ✓ Maintain minimum staff-to-child ratios:

Under 1 yr. old	1:4
1 yr. old	1:6
2 yrs. old	1:11
3 yrs. old	1:15
4 yrs. old	1:20
5 yrs. old & older	1:25

- ✓ Maintain appropriate transportation vehicles (*if transportation is provided*).

- ✓ Provide parents with written disciplinary practices used by the facility.
- ✓ Provide access to the facility during normal hours of operation.

Physical Environment

- ✓ Maintain sufficient usable indoor floor space for playing, working, and napping.
- ✓ Provide space that is clean and free of litter and other hazards.
- ✓ Maintain sufficient lighting and inside temperatures.
- ✓ Equip with age and developmentally appropriate toys.

- ✓ Provide appropriate bathroom facilities and other furnishings.

- ✓ Provide isolation area for children who become ill.

- ✓ Practice proper hand washing, toileting, and diapering activities.

Training Requirements

- ✓ 40-hour introductory child care training.
- ✓ 10-hour in-service training annually.
- ✓ 0.5 continuing education unit of approved training or 5 clock hours of training in early literacy and language development.
- ✓ Director Credential for all facility directors.

Health Related Requirements

- ✓ Emergency procedures that include:
 - Posting Florida Abuse Hotline number along with other emergency numbers.
 - Staff trained in first aid and Infant/Child CPR on the premises at all times.
 - Fully stocked first aid kit.
 - A working fire extinguisher and documented monthly fire drills with children and staff.

- ✓ Medication and hazardous materials are inaccessible and out of children's reach.

Food and Nutrition

- ✓ Post a meal and snack menu that provides daily nutritional needs of the children (*if meals are provided*).

Record Keeping

- ✓ Maintain accurate records that include:
 - Children's health exam/immunization record.
 - Medication records.
 - Enrollment information.
 - Personnel records.
 - Daily attendance.
 - Accidents and incidents.
 - Parental permission for field trips and administration of medications.

Parent's Role

The parent's role in quality child care is vital to it's success. In partnering with the caregiver to achieve this goal, parents should:

- ✓ Familiarize themselves with the child care standards used to license the child care facility.

- ✓ Inquire about the qualifications and experience of child care staff, as well as staff longevity.

- ✓ Know the facility's policies and procedures.

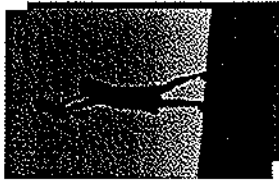
- ✓ Communicate with the caregiver.

- ✓ Visit and observe the facility.

- ✓ Participate in special activities, meetings, and conferences.

- ✓ Talk to their child about their daily experiences in child care.

- ✓ Arrange alternate care for their child when they are sick.



To report non-compliance with state licensing standards, please contact your local licensing office.