



Naples Art Factory:

## **Post-Impressionistic Landscape Painting**

Art History Overview and Miniature Painting

This class offers attendees a historic overview of Post-Impressionism with their understanding of its qualities and characteristics visualized in the creation of a miniature landscape painting.

**Instructor: Dani Papanikolaou**

@papanikolaou.dani

### **Objectives**

To understand Post-Impressionism and the objectives those painters sought to portray.

To learn how to emanate the Post-Impressionistic style in your own vision.

To understand layering and value in applying visible brushstrokes of unmodulated colors.

### **Education Level**

*Basic to Intermediary*

- Attendees will learn how to paint like a Post-Impressionist painter from their learned knowledge of the subject and create their own miniature landscape painting emanating the characteristics of the popular style.

### **Materials**

Wooden Panel (small)

Acrylic Paint

Brushes

Small Utensils and Tools (for optional detailing)

Palette

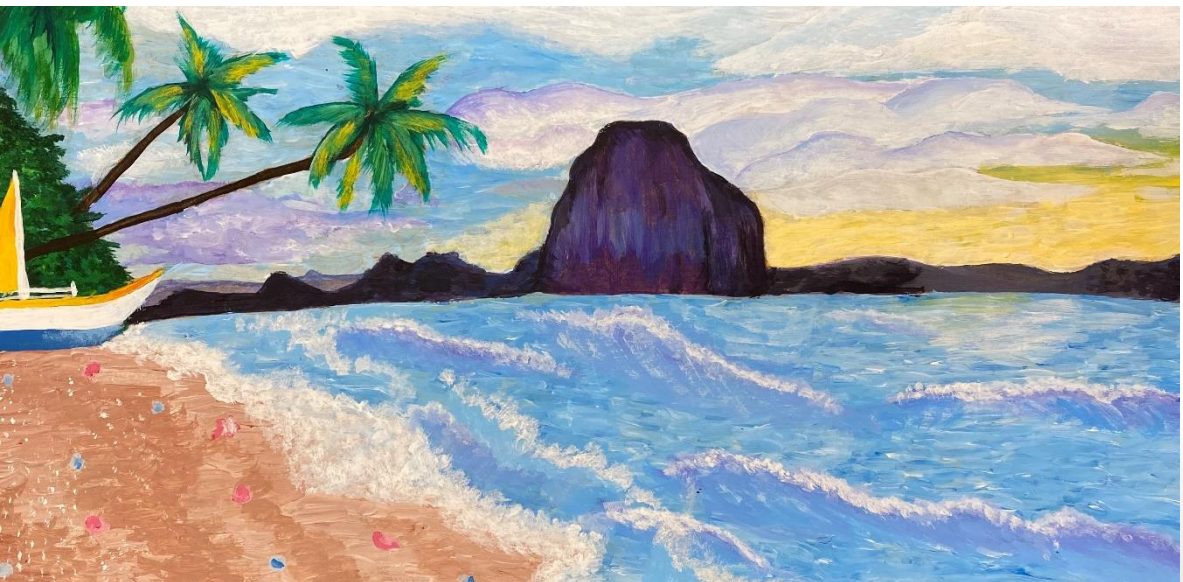
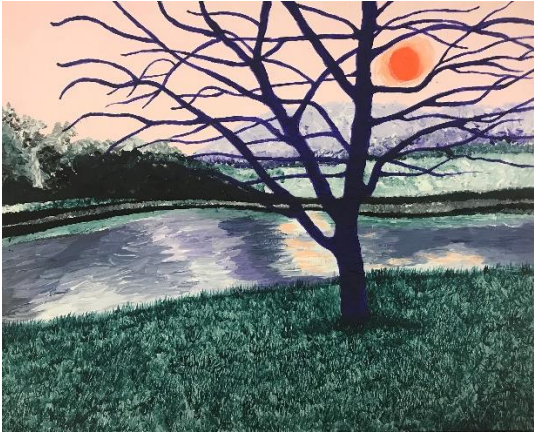
Paper Towel

### **Skills**

- Attendees will learn the following:
  - What is Post-Impressionism and its preceding (and successive) movements?
  - Basic gestural lines in drawing a landscape (either real or fictional).
  - Post-Impressionistic Painting Characteristics:
    - Visible Brushstrokes
    - Layering Unmodulated Colors
    - Emphasis on Light and Shade
    -

# NAPLES ART FACTORY

Examples:



Examples: