



**POGGENAMP NAGARSHETH POWERTRONICS PVT LTD**

**Not Just Lamination.. Total Solutions..**

Manufacturers of stampings / laminations for  
Motors and Transformers

**Corporate Office:** 207, 2<sup>nd</sup> Floor, Mauryansh Elanza,  
Shyamal Cross Roads, Ahmedabad – 380015, Gujarat, India

**Vavdi Works:** Survey No. 121/122, Village Vavdi,  
Kheda-Dolkha Highway, Gujarat, India

**Tel:** +91 – 79 – 6160 3908

**Email:** [info@poggenamp.com](mailto:info@poggenamp.com)

**Web:** [www.poggenamp.com](http://www.poggenamp.com)



The word POGGENAMP has been derived from the name of two reputed scientist's. **POGGENDORFF (POGGEN)** a German Physicist & **ANDRE AMPERE (AMP)** the renowned French Physicist.

This formed the base of the name –

### **POGGENAMP NAGARSHETH POWERTRONICS PRIVATE LIMITED**

An **ISO 9001:2015** and **ISO TS 16949:2002** certified company manufacturing stampings/laminations for Motors and Transformers.

Established in 1982 as a tiny partnership enterprise, Poggenamp today has grown to be a globally acknowledged manufacturing of electrical stampings/laminations.

State-of-art brand new equipments are capable to meet any challenging job from punching as thin as 0.20 mm up to 2.00 mm thickness electrical/high tensile steel, diameter as small as 12 mm up to 1200 mm for a wide spectrum of applications.

Poggenamp is also recognised as an EXPORT HOUSE by the Ministry of Commerce and Industry, Government of India.

# Product Application

Today we service a wide spectrum of industries with application namely –

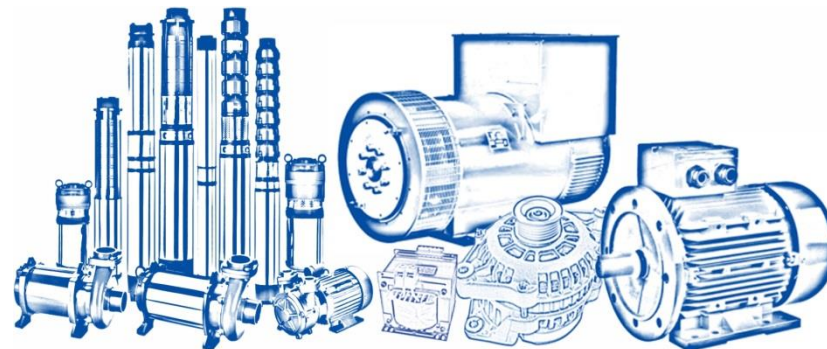
## Pumps :

- Submersible pumps
- Domestic pumps
- Sewage pumps
- Mining pumps
- Monoblocks

Small transformer laminations find use in instrument transformers, UPS, ballasts, stabilizers etc.

## Motors :

- AC motors
- DC / BLDC / PM motors
- Lift duty motors
- Servo motors
- Traction motors
- Alternators
- Hydro / Wind generators
- Domestic / Industrial fan motors
- Air condition / Ventilation motors
- Aviation / Robotics
- Automobile / HEV – EV



# Manufacturing Capabilities

The present set-up is adequate to process 2000 M.T of finished laminations per month. Capabilities –

- Tooling
- Slitting
- Punching
  - Gang slotting
  - Notching / Indexing
  - Progressive
- Annealing
- Stacking
  - Auto-stacking
  - Welding
    - TIG
    - MIG
    - Laser
  - Cleating
  - Riveting
  - Gluing / Self bonding
- Aluminium Die casting
- Machining
  - OD turning
  - ID burnishing / broaching
- Winding & Shaft Insertion





# Raw Materials and Slitting

Prime quality electrical steel (CRNGO) is directly procured from Mills of international repute like CSC – India, CSC – Taiwan, JSW – India, Tata – India, SAIL – India, SURA – Sweden, POSCO – India.

The pricing of the steel are on a quarterly basis with assured supply of various grades as per the procurement schedule.

Semi Processed electrical steel is sourced from JSW - India. However the pricing is revised on monthly basis.

Full width coils are procured for optimum slitting and minimum trimming, slitted on a twin loop slitting line from Blue Star – Stampco USA design. Our associate company Posco - Poggenamp also having slitting machine with capacity of 5000 M.T / month, coil weight upto 20 M.T and coil widths upto 1250 mm.



# Manufacturing Facilities

**Numerous high speed presses up to 700 SPM can also accommodate carbide tools for volume production and are as a complete line comprising of uncoiler, straightner / loop controller and feeder.**

Progressive tools with multiple rows and multi cavity with conveyor output can be fitted on these presses. All these facilities are dedicated per press.



**A continuous BAB (Burning, Annealing and Blueing) furnace can decarb/anneal 500 M.T of stampings per month.**

Latest software / hardware ensure consistency in all parameters required by a user.





# Manufacturing Facilities - Punching

Host of conventional pneumatically operated presses up to 100T cater to small batches requirements as gang (compound) punched stampings. Located at our Vatva - Ahmedabad factory.

Pneumatic mechanical large frame presses up to 400T can blank diameters and gang slot up to 1200 mm diameters, 1000 mm chord length.

These are also capable to act as progression type manufacturing process.

Notching machines from 2T up to 10T capacities are capable to notch/index stamping up to 1200 mm diameters. Skew notching also possible.



# Manufacturing Facilities – Stacking

Several stacking m/c are installed for TIG welding (Argon gas) and MIG welding of stacks. Laser welding is also possible. Conventional as well as automated systems are put to use.

Another method for building up stacks are through cleating where 0.8/1.0 mm steel strips are inserted into the cleating notch and as per required core length such stacks are made involving reverse pressure technology.

Maximum stack height of 1200 mm can be cleated depending on the diameter.





# Manufacturing Facilities – Die casting

Currently 5 vertical aluminium pressure die casting machines fulfils the requirement of die cast rotors.

With increasing demand other high speed machines are planned with multi-cavity tooling's to enhance the capacities and handle large volume production.

Semi automatic rotor skewing machines for accurate skew and better productivity.

Maximum Aluminium of 25 kgs. can be filled in the rotor melted in induction furnaces.



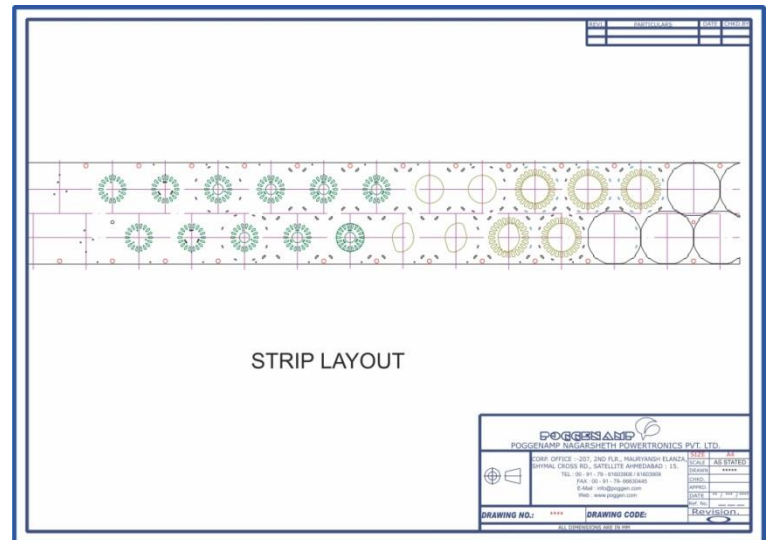
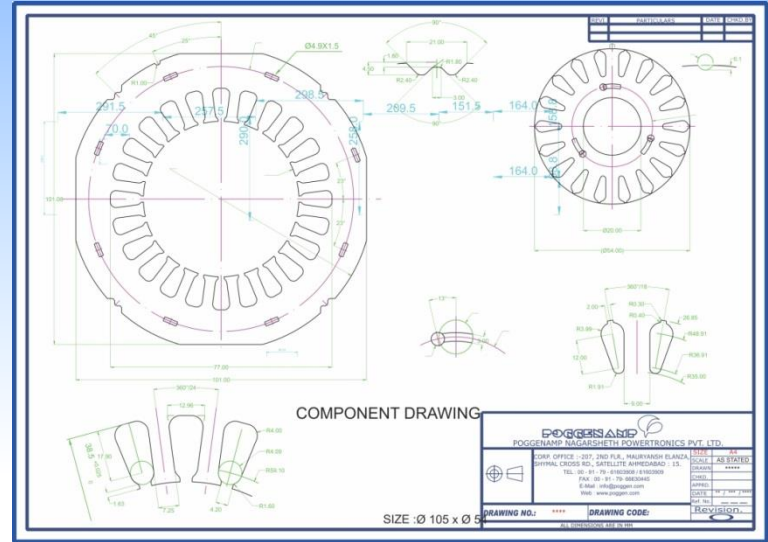
## Tool Room - Development

Poggenamp has comprehensive in-house facilities, including CNC Turning, EDM Wire-cut, Milling, Drilling, Grinding & Hardness testing equipments and various other equipments.

Tool Steel is sourced from Bohler, Austria.

A full-fledged team of qualified personnel ensures optimization of design parameters on CAD/CAM.

Carbide tools are sourced from Taiwan and China.



# Tool Room - Maintenance

We take upmost cares of the tools which are mainly property of our customers, the tool history data is also maintained. The tools are grinded on the following -

- 1) Imported surface grinder with bed size of 2000 x 1200 mm.
- 2) Imported surface grinder with bed size of 1500 x 500 mm.



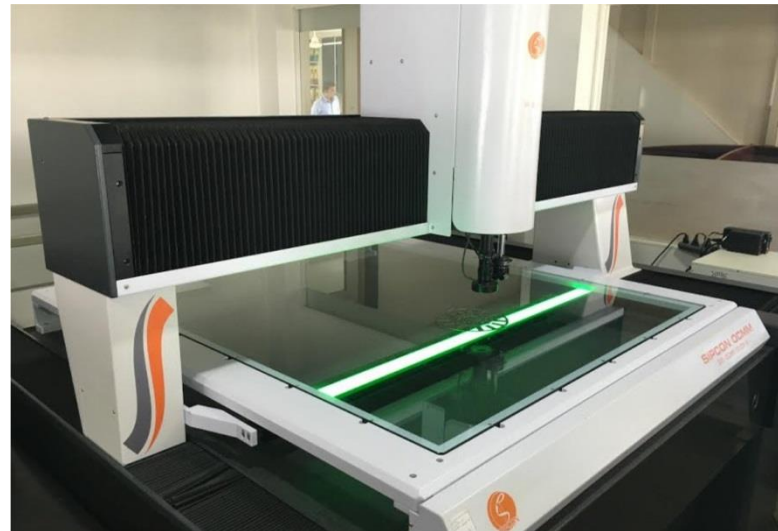
# Testing / Inspection Facilities

Quality and timely deliveries are the essence of a successful business.

Latest measurement techniques like –

- Epstein frame
- Stator core tester
- Optical CMM
- Rotor analyser
- Conductivity measurement
- Insulation measurement
- Profile projector
- Hardness tester

The most of digital /optical /mechanical measuring instrument are in use





# Plant outlay

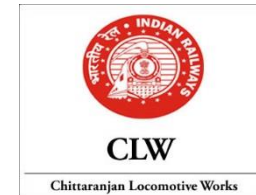
The manufacturing facilities are housed in a built-up area of several fully covered areas comprising of a main factory of 4000 sq.mt adjoining shed of 1200 mtrs and 1000 mtrs for scrap storage / bundling of skeletons on a hydraulic press.

New premises with 5000 Sq. Mtrs area will house all high speed presses which will eventually be shifted from the main building for ease of operations.

These facilities are housed in a total land area of 41,000 Sq. Mtrs.



# Customers





# THANK YOU