

Welcome to InsightHQ

 Remember Me?

Welcome



Snapshot



Data



Equipment



Product



Site

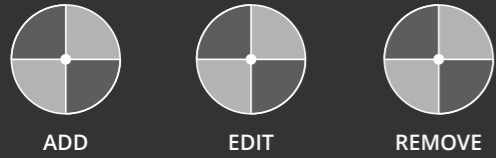


Loadout 360



DIY

Sign Out



Pit

Excavator: CAT374

166

4376

Processing

Primary Belt

0 TPH

4358

Target TPH **2.73** m/s
Average TPH **167** TPH

20 mm Agg

443 TPH

3159

Avg Speed **1.78** m/s
Average TPH **57** TPH

40 mm Agg

22 TPH

274

Avg Speed **0.73** m/s
Average TPH **13** TPH

Haul

Haul truck 1: CAT771

56

1470

Haul truck 2: CAT771

51

1338

Haul fleet summary

153

4390

0

0

Max Speed **38.1**
Average Load **27**
Average Cycle **10**

Haul truck 1: Avg loading time

2:13

Loadout

Loadout 1: CAT980

77

2469

Loadout 2: Deere884

121

3678

20 mm Agg

1000

167 Hours till Empty

2773

17

Geo fence

ABC Co. Ltd.

1	Product	Shot rock
2	Product	10 mm
3	Product	20 mm
4	None	
5	None	
6	None	
7	None	
8	None	

Products

Index	Name	Description
1	Shot Rock	Pit Shot Rock
2	10mm	10mm Agg
3	20mm	20mm Agg
4	G10	GAP 10
5	G20	GAP 20
6	G30	GAP 30
7	G40	GAP 40

Sync 7 records

Select List

- Sites
- Scales
- Products
- Data 1
- Data 2
- Data 3
- Data 4
- Data 5
- Data 6
- Data 7

Cancel

Ok



Snapshot



Data



Equipment



Product



Site



LOADRITE 360



DIY



GEO FENCE



DATA SETUP



BROWSE DATA



Customer

Data 1

Sync 5 records

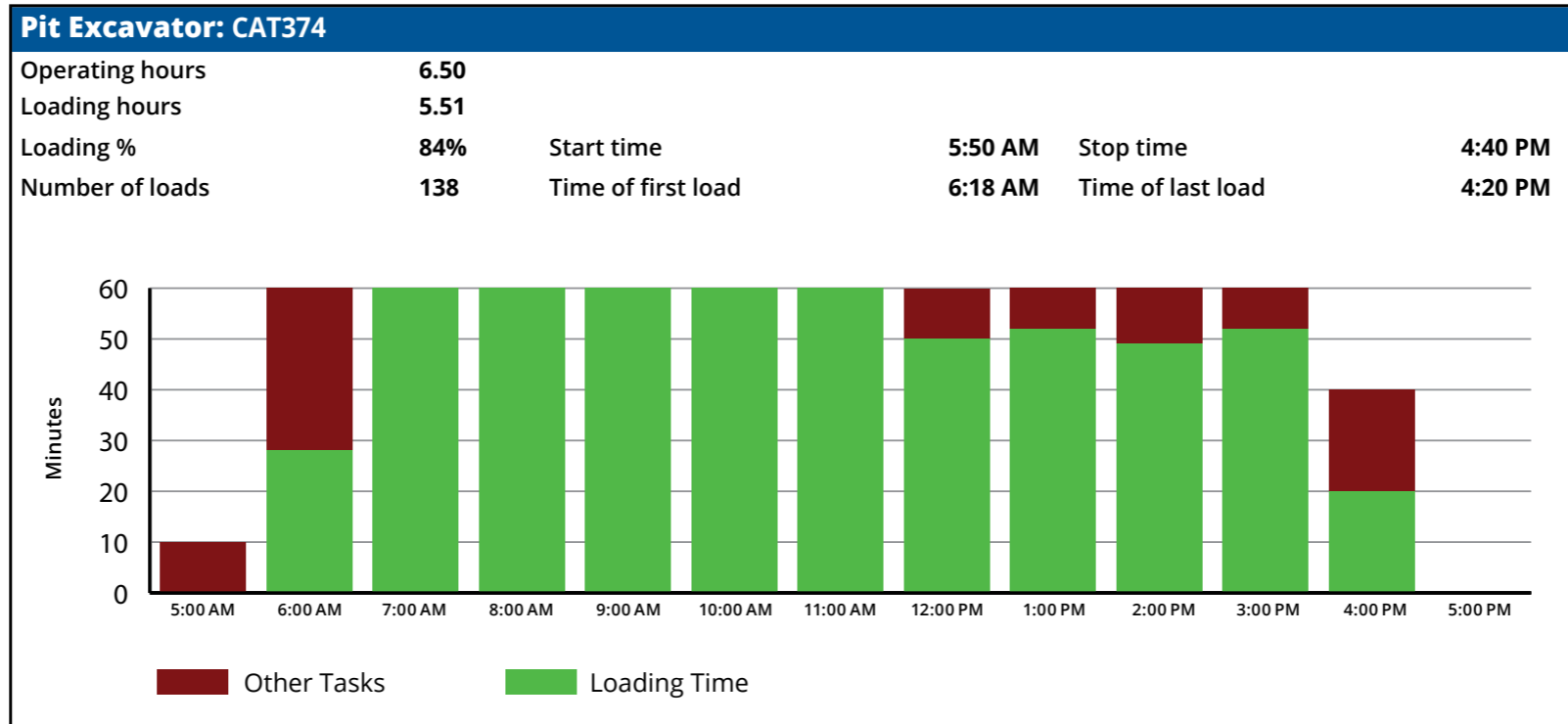
Index	Name	Description	Contact
1	ORION	Orion Construction inc	pl@orion.com, rt@orion.com
2	FISHER	Fisher Contracting	at@fisher.com
3	PACIFIC	PACIFIC	yt@pacific.com
4	ALBANY	ALBANY	pw@albany.com
5	ATLANTIC	ATLANTIC	ds@atlantic.com

Site	Scale	Record Type	End Time	Duration	Weight	Product	Loading	Hauling	Dumping	Return	Avg Speed	Avg TPH	Run Time	Loaded
ABC Quarry	6974	Truck Load	27/03/2017 15:46	57	17.66	GAP 40								
ABC Quarry	7866	Truck Load	27/03/2017 16:15	357	25.44	GAP 40								
ABC Quarry	7866	Truck Load	28/03/2017 10:25	20	2.50	Scoria 25.7								
ABC Quarry	9898	Haul Cycle	19/01/2017 12:05	237	23.80	Material	11	108	24	39				
ABC Quarry	9898	Haul Cycle	19/01/2017 12:07	149	45.10	Material	44	41	24	40				
ABC Quarry	9898	Haul Cycle	19/01/2017 12:10	149	45.10	Material	44	41	24	40				
ABC Quarry	9961	Conveyor Report	04/01/2017 11:42	60	4.50	100 mm Rockfill					1	275.45	59	59
ABC Quarry	9962	Conveyor Report	04/01/2017 11:42	60	4.50	200 mm Rockfill					1	295.45	59	59
ABC Quarry	9963	Conveyor Report	04/01/2017 11:42	60	9.00	100~250 mm Gabion					1	549.15	59	59

- ▶ Daily Loading Availability
- Daily Loading Performance
- Daily Conveyor Availability
- Daily Conveyor Performance
- Conveyor Period Summary
- Haul Truck Cycle
- Daily Haul Truck Speeding
- Location Report
- Loading Productivity
- Loader Delays
- Loading Heatmap
- Detailed Loading Performance

Daily Loading Availability

Report Period Today
 Site ABC Co. Ltd.





Daily Loading Availability

▶ Daily Loading Performance

Daily Conveyor Availability

Daily Conveyor Performance

Conveyor Period Summary

Haul Truck Cycle

Daily Haul Truck Speeding

Location Report

Loading Productivity

Loader Delays

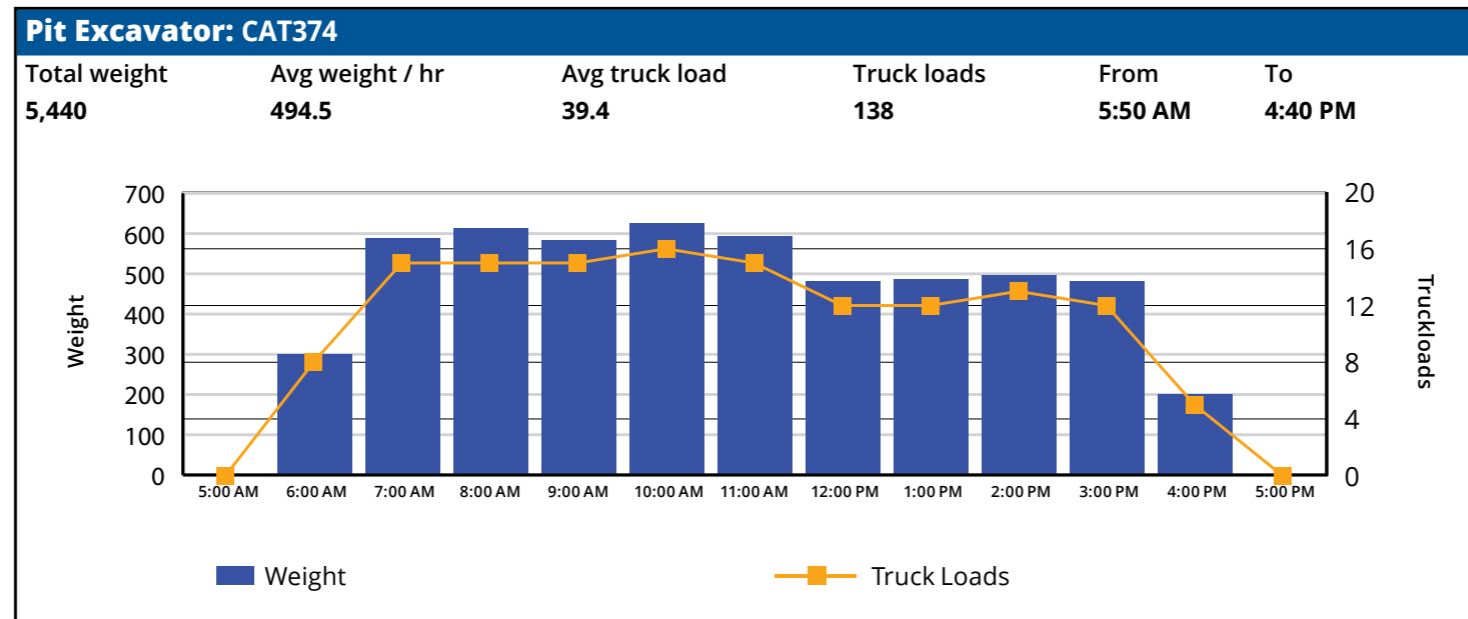
Loading Heatmap

Detailed Loading Performance

Daily Loading Performance

Report Period Today
Site ABC Co. Ltd.

Summary		
	Total weight	% Total
CAT374	1,570	100.0%
Total	1,570	

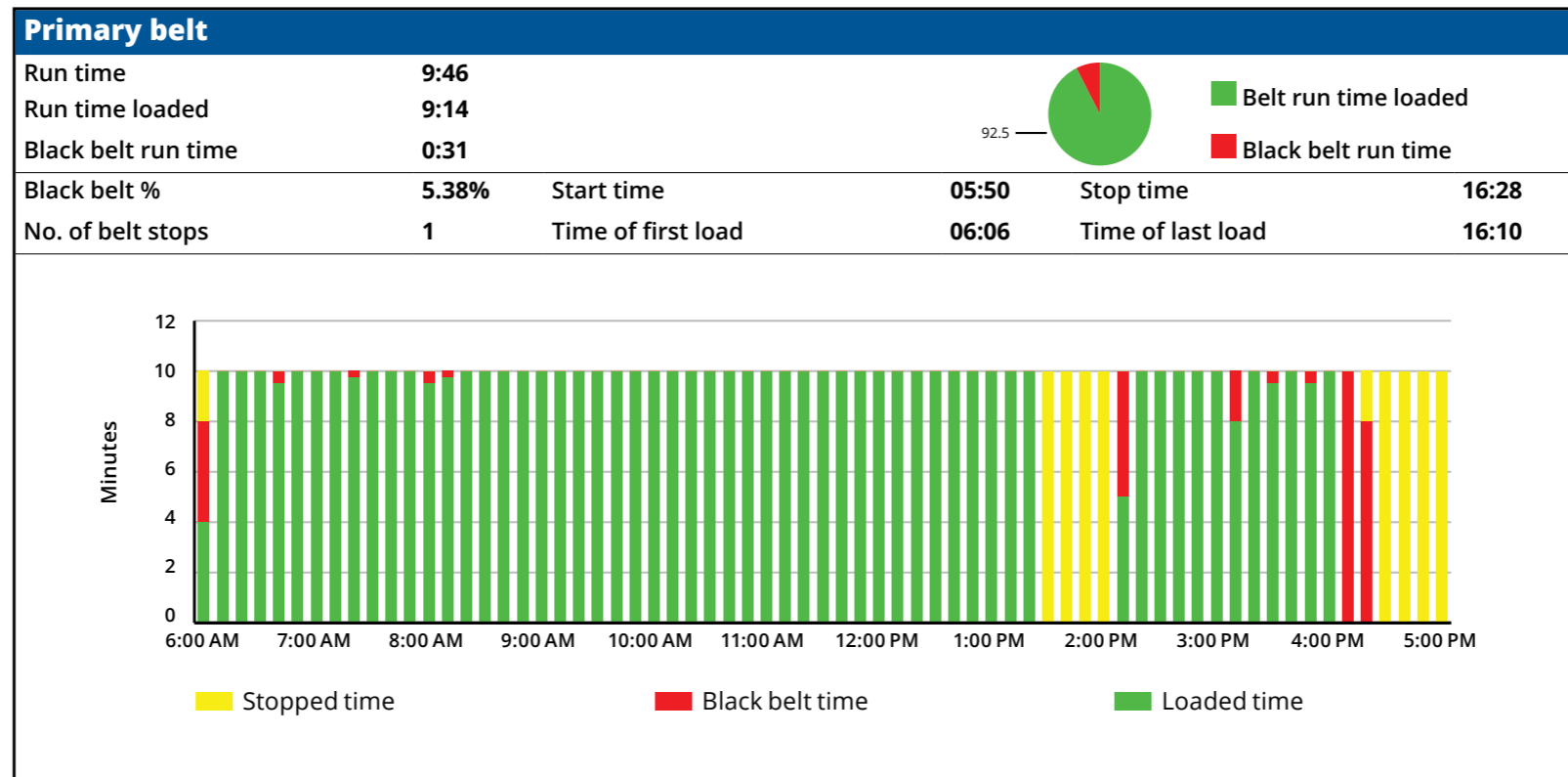




- Daily Loading Availability
- Daily Loading Performance
- ▶ Daily Conveyor Availability
- Daily Conveyor Performance
- Conveyor Period Summary
- Haul Truck Cycle
- Daily Haul Truck Speeding
- Location Report
- Loading Productivity
- Loader Delays
- Loading Heatmap
- Detailed Loading Performance

Daily Conveyor Availability

Report Period Today
 Site ABC Co. Ltd.





Daily Loading Availability

Daily Loading Performance

Daily Conveyor Availability

▶ Daily Conveyor Performance

Conveyor Period Summary

Haul Truck Cycle

Daily Haul Truck Speeding

Location Report

Loading Productivity

Loader Delays

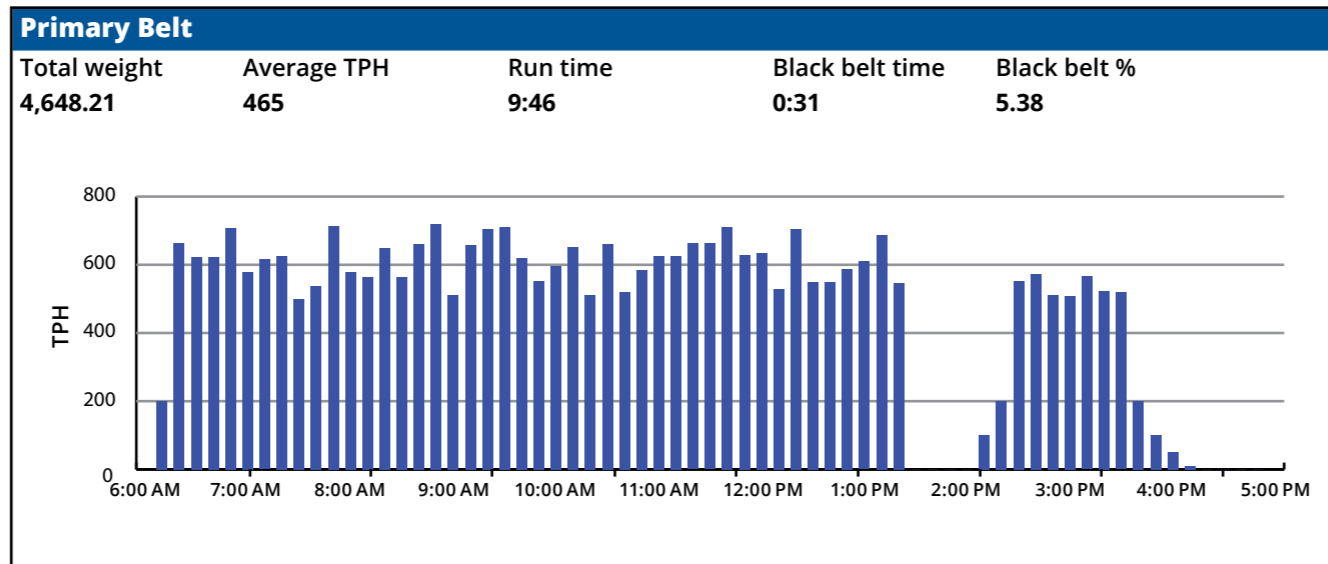
Loading Heatmap

Detailed Loading Performance

Daily Conveyor Performance

Report Period Today
Site ABC Co. Ltd.

Summary		
	Total weight	Average TPH
Primary Belt	4648	465
Belt 1: 20mm Agg	2275	325

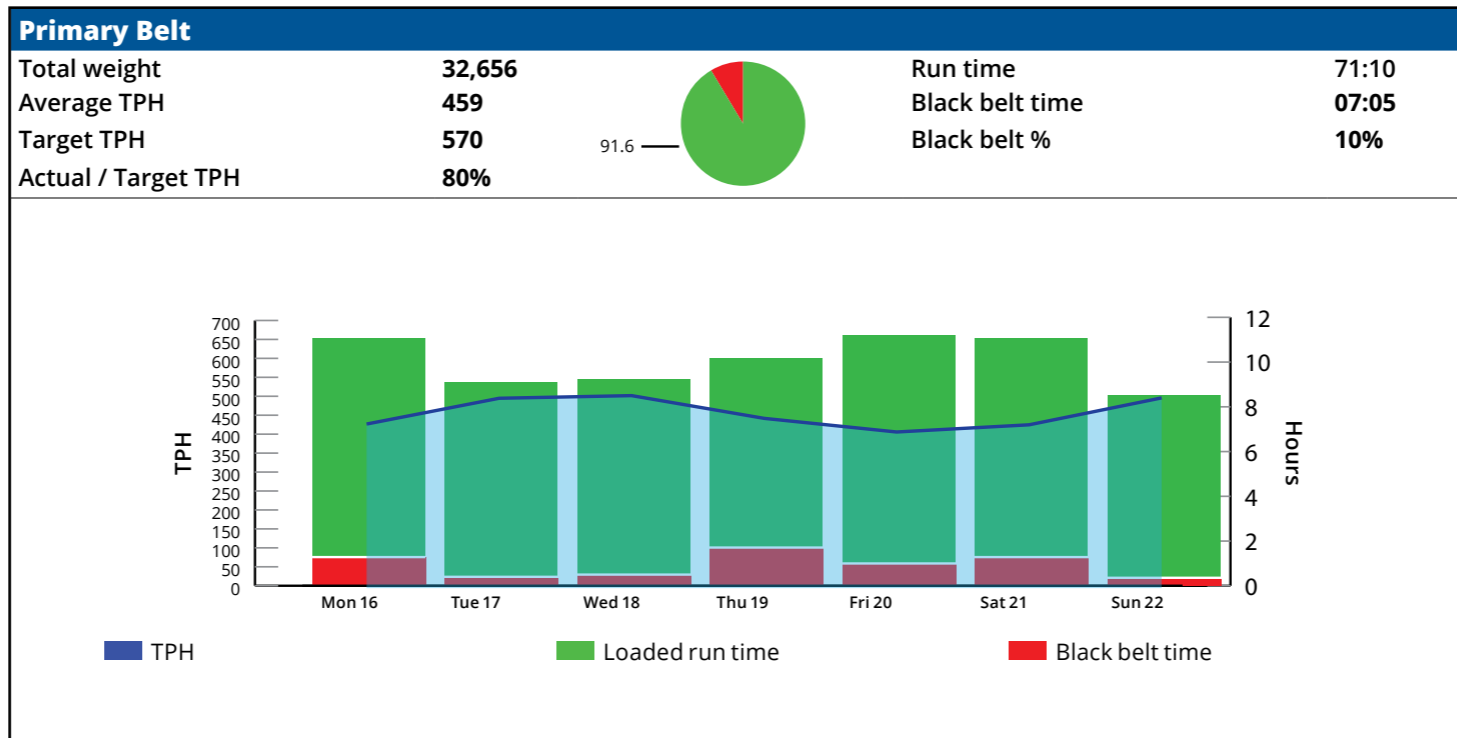




- Daily Loading Availability
- Daily Loading Performance
- Daily Conveyor Availability
- Daily Conveyor Performance
- ▶ Conveyor Period Summary
- Haul Truck Cycle
- Daily Haul Truck Speeding
- Location Report
- Loading Productivity
- Loader Delays
- Loading Heatmap
- Detailed Loading Performance

Conveyor Period Summary

Report Period: Last week
 Site: ABC Co. Ltd.



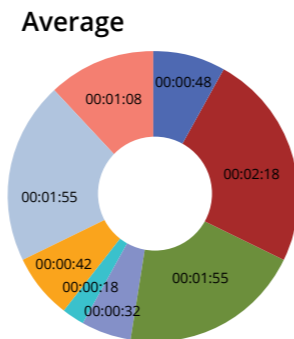
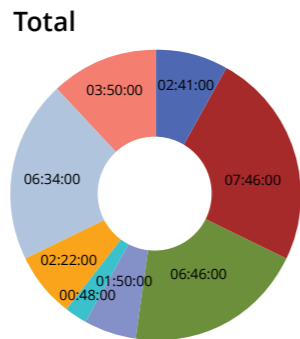
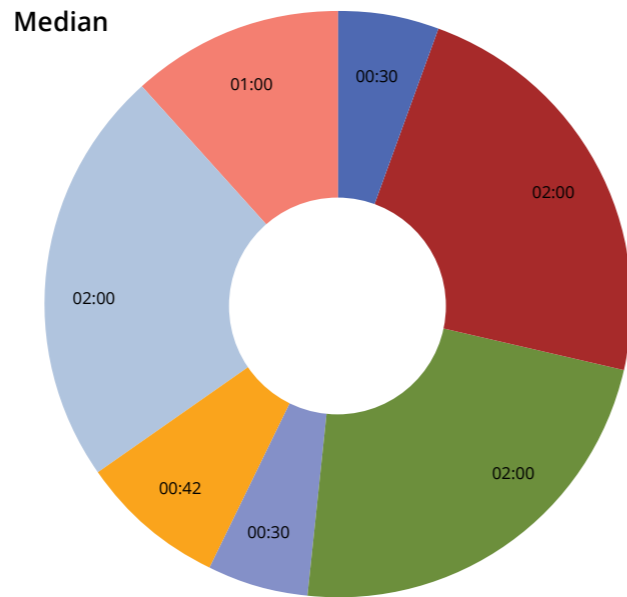
Date	Total weight	TPH	Actual / Target TPH	Run time	Black belt time	Black belt %
Mon 16	4,783	433	76%	11:04	01:24	13%
Tue 17	4,599	501	88%	09:10	00:25	5%
Wed 18	4,773	508	89%	09:24	00:33	6%
Thu 19	4,613	448	79%	10:18	01:39	16%
Fri 20	4,658	412	72%	11:18	01:13	11%
Sat 21	4,782	431	76%	11:06	01:27	13%
Sun 22	4,449	502	88%	08:51	00:23	4%
Total	32,656	459	80%	71:10	07:05	10%



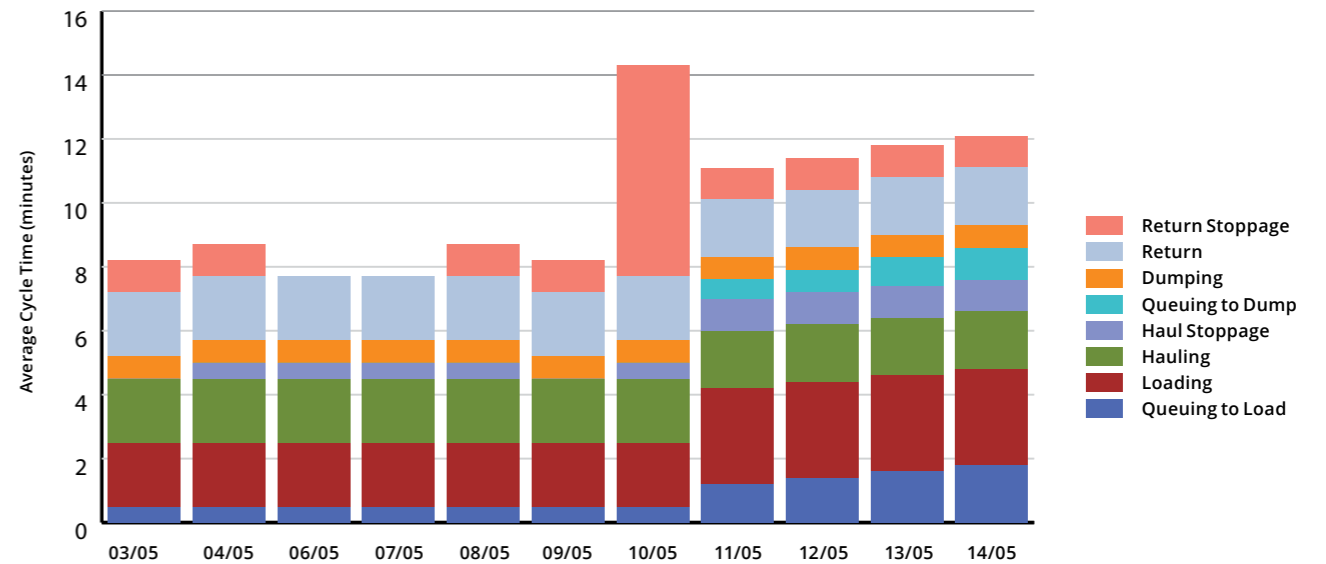
- Daily Loading Availability
- Daily Loading Performance
- Daily Conveyor Availability
- Daily Conveyor Performance
- Conveyor Period Summary
- Haul Truck Cycle**
- Daily Haul Truck Speeding
- Location Report
- Loading Productivity
- Loader Delays
- Loading Heatmap
- Detailed Loading Performance

Haul Truck Cycle

Report Period Today
Site ABC Co. Ltd.
Trucks Pit Truck 1, Pit Truck 2, Pit Truck 3



Cycle Time Comparison





Daily Loading Availability

Daily Loading Performance

Daily Conveyor Availability

Daily Conveyor Performance

Conveyor Period Summary

Haul Truck Cycle

▶ Daily Haul Truck Speeding

Location Report

Loading Productivity

Loader Delays

Loading Heatmap

Detailed Loading Performance

Daily Haul Truck Speeding

Report Period Today
Site ABC Co. Ltd.



Speeding	
1:00 PM	34.6 km/h
1:14 PM	36.9 km/h
1:19 PM	33.4 km/h
1:20 PM	31.7 km/h
1:22 PM	35.0 km/h
1:27 PM	36.7 km/h
1:29 PM	38.1 km/h
1:35 PM	36.0 km/h
1:38 PM	32.3 km/h
1:43 PM	39.3 km/h



Daily Loading Availability

Daily Loading Performance

Daily Conveyor Availability

Daily Conveyor Performance

Conveyor Period Summary

Haul Truck Cycle

Daily Haul Truck Speeding

▶ Location Report

Loading Productivity

Loader Delays

Loading Heatmap

Detailed Loading Performance

Location Report

Report Period Today
Site ABC Co. Ltd.

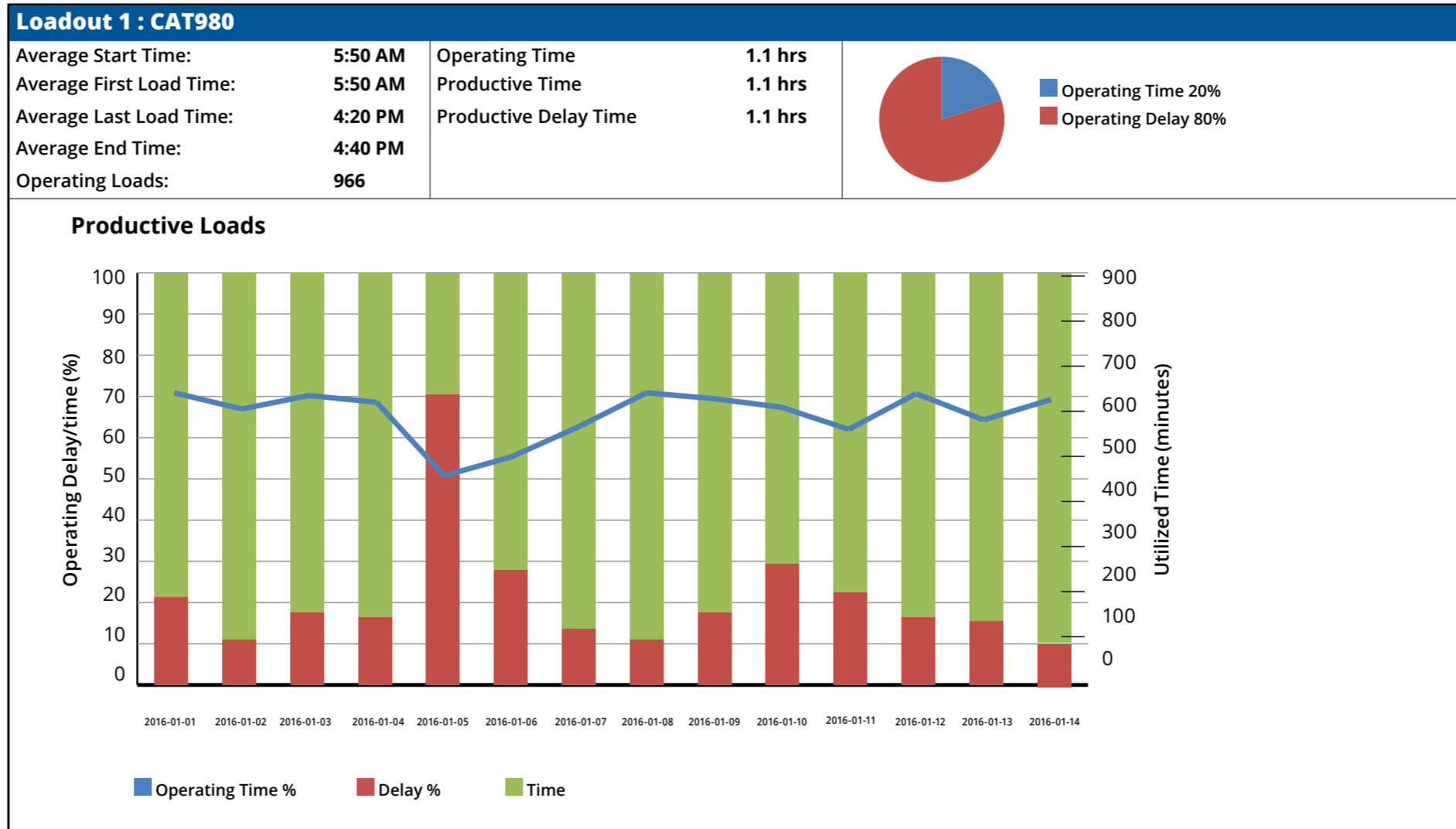




- Daily Loading Availability
- Daily Loading Performance
- Daily Conveyor Availability
- Daily Conveyor Performance
- Conveyor Period Summary
- Haul Truck Cycle
- Daily Haul Truck Speeding
- Location Report
- ▶ Loading Productivity
- Loader Delays
- Loading Heatmap
- Detailed Loading Performance

Loading Productivity

Report Period Last two weeks
Site ABC Co. Ltd.
Loaders Loadout 1: CAT980, Loadout 2: Deere884

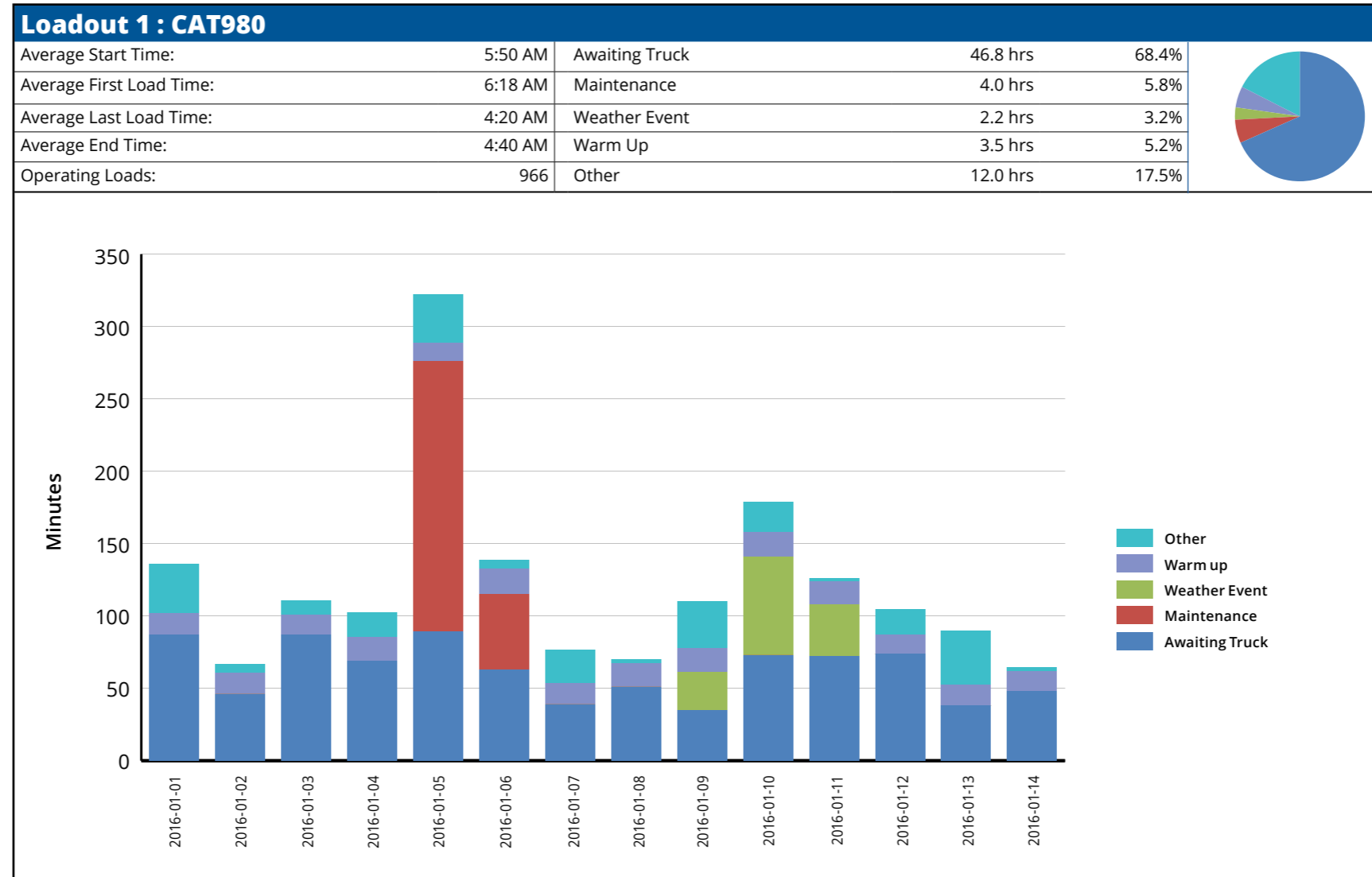




- Daily Loading Availability
- Daily Loading Performance
- Daily Conveyor Availability
- Daily Conveyor Performance
- Conveyor Period Summary
- Haul Truck Cycle
- Daily Haul Truck Speeding
- Location Report
- Loading Productivity
- ▶ Loader Delays
- Loading Heatmap
- Detailed Loading Performance

Loading Operating Delays

Report Period Last two weeks
Site ABC Co. Ltd.
Loaders Loadout 1: CAT980, Loadout 2: Deere884





Daily Loading Availability

Daily Loading Performance

Daily Conveyor Availability

Daily Conveyor Performance

Conveyor Period Summary

Haul Truck Cycle

Daily Haul Truck Speeding

Location Report

Loading Productivity

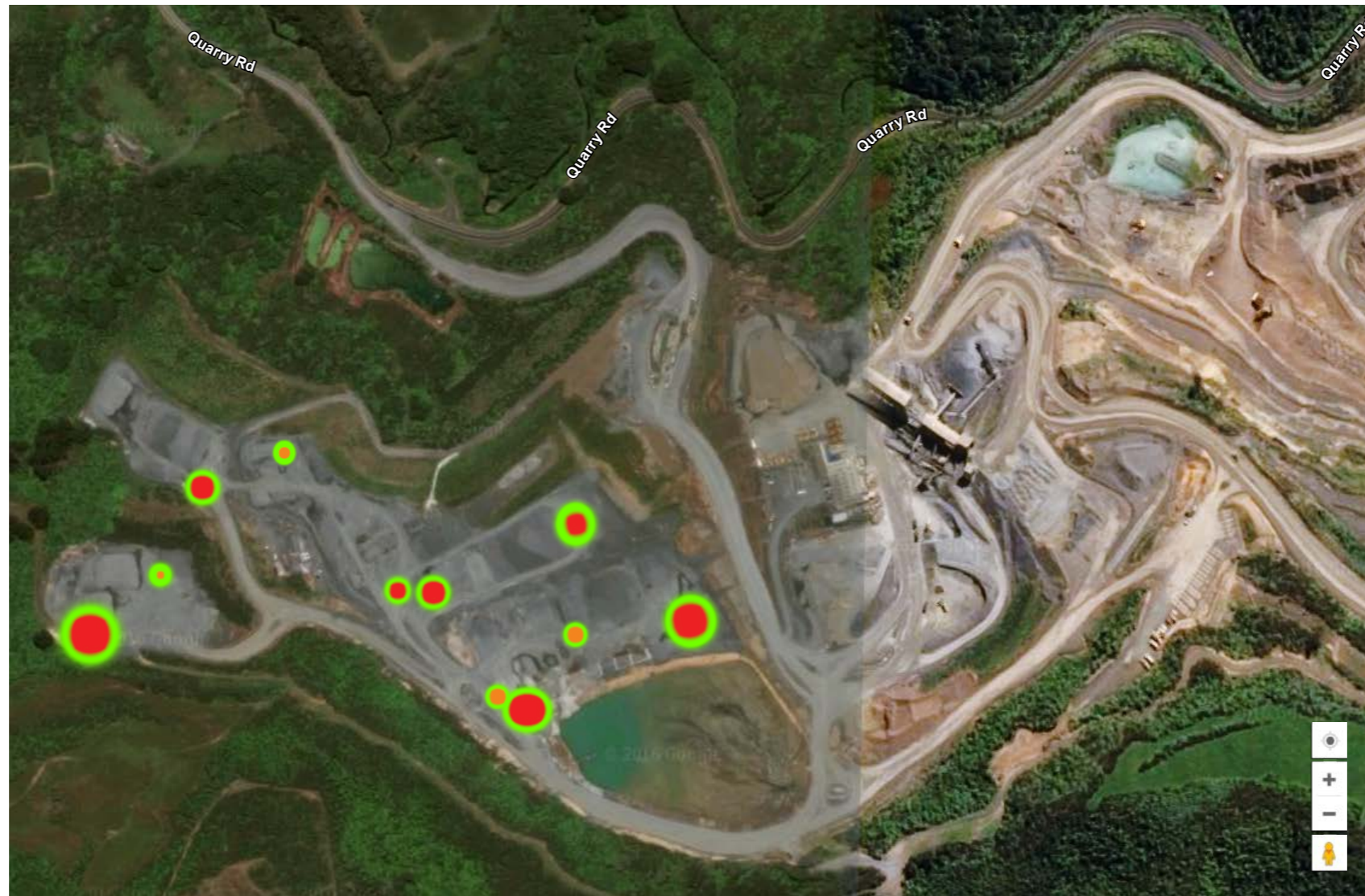
Loader Delays

▶ Loading Heatmap

Detailed Loading Performance

Loading Heatmap

Report Period: Today
Site: ABC Co. Ltd.



Loading Heatmap Report

Period: Last week
Scale: Dave's Loader
Number of Loads: 267
Distance travelled: 5.93 km

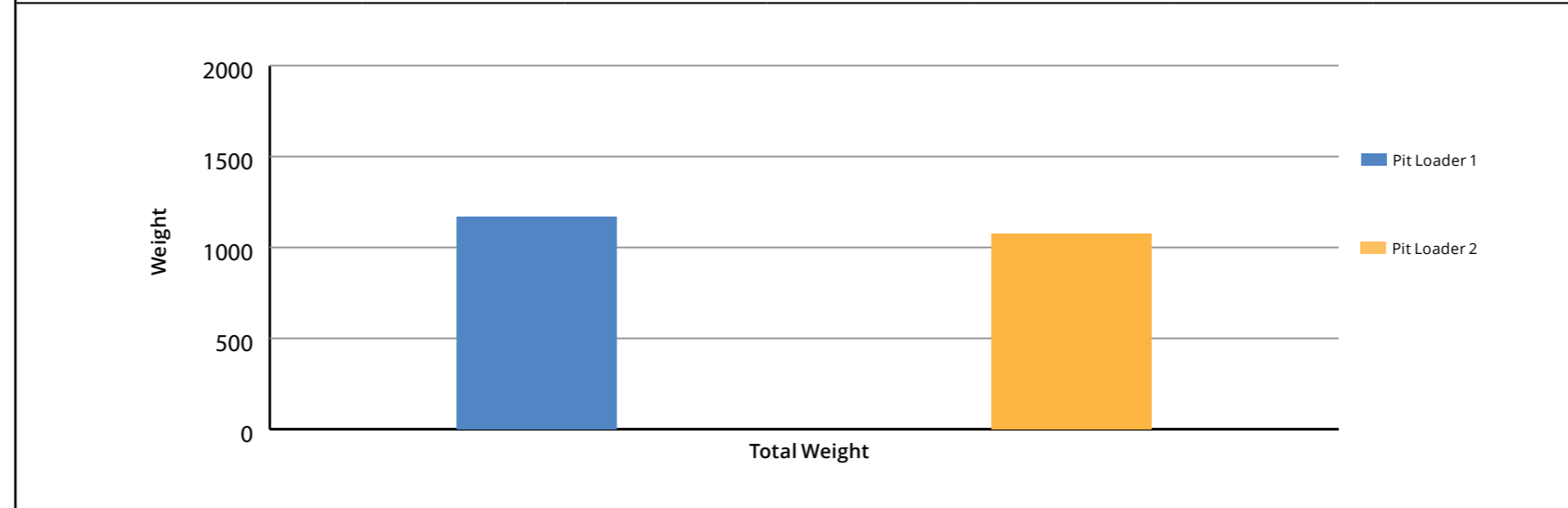


- Daily Loading Availability
- Daily Loading Performance
- Daily Conveyor Availability
- Daily Conveyor Performance
- Conveyor Period Summary
- Haul Truck Cycle
- Daily Haul Truck Speeding
- Location Report
- Loading Productivity
- Loader Delays
- Loading Heatmap
- ▶ Detailed Loading Performance

Detailed Loading Performance

Report Period: Yesterday
 Site: ABC Co. Ltd.

Pit Loading						
	Number of loads	Total weight	% of total number of loads	% of total weight	Avg lifts / load	Avg weight / hour
Loadout 1: CAT980	45	1,170.0	54.0%	52.0%	2.0	390
Loadout 2: Deere884	39	1,076.4	46.0%	48.0%	2.4	276
Total	84	2,246.4	100.0%	100.0%	2.2	666



Load Time			
	Min.	Avg.	Max.
Loadout 1: CAT980	2.10	3.02	4.21
Loadout 2: Deere884	3.20	4.11	6.31
Average	2.65	3.57	5.26

Load Weight			
	Min.	Avg.	Max.
Loadout 1: CAT980	24.7	26.0	27.3
Loadout 2: Deere884	18.5	27.6	30.4
Average	21.6	26.7	28.8



Product Summary

Product Detailed Report

Haul Productivity Summary

Daily Haul Productivity

Material Handling Report

Daily Material Movement

Daily Load and Dump

Product Summary

Report Period Last month

Site: All Reported Sites

Product	Remaining	Change
10mm Agg	2442.7	-35634
20mm Agg	4342.4	4174
GAP 10	3649.4	2372
GAP 20	3556.9	2400
GAP 30	3367.1	1165
GAP 40	2929.0	8659

Site: ABC Quarry

Product	Remaining	Change
10mm Agg	1566.8	-37130
20mm Agg	3922.4	32
GAP 10	1492.6	2560
GAP 20	991.2	0
GAP 30	1631.6	3921
GAP 40	912.1	0

Site: DEF Quarry

Product	Remaining	Change
GAP 10	1465.9	2372
GAP 20	1081.9	2400
GAP 30	1026.7	1165
GAP 40	961.0	8659

Site: GHI Quarry

Product	Remaining	Change
10mm Agg	875.9	1496
20mm Agg	420.1	4142
GAP 10	691.0	0
GAP 20	982.4	0
GAP 30	847.8	0
GAP 40	475.4	0



- Product Summary
- ▶ Product Detailed Report
- Haul Productivity Summary
- Daily Haul Productivity
- Material Handling Report
- Daily Material Movement
- Daily Load and Dump

Product Detailed Report

Report Period Last month
 Site ABC Co. Ltd.

GAP 10

Date		Weight
01/09/2016	Start Weight	-
16/09/2016	Total Reset	2.0
	Remaining weight at End of Period	-747.4

GAP 20

Date		Weight
01/09/2016	Start Weight	-
28/09/2016	Total Reset	1,000.0
	Remaining weight at End of Period	1,000.0

GAP 30

Date		Weight
01/09/2016	Start Weight	-
08/09/2016	Total Reset	123.0
30/09/2016	Total Reset	123.0
	Remaining weight at End of Period	123.0

GAP 40

Date		Weight
01/09/2016	Start Weight	-
01/09/2016	Added	560.7
02/09/2016	Added	526.5
03/09/2016	Added	445.1
04/09/2016	Added	455.7
05/09/2016	Added	507.3
06/09/2016	Added	564.5
07/09/2016	Added	524.8

Product Summary

Product Detailed Report

▶ Haul Productivity Summary

Daily Haul Productivity

Material Handling Report

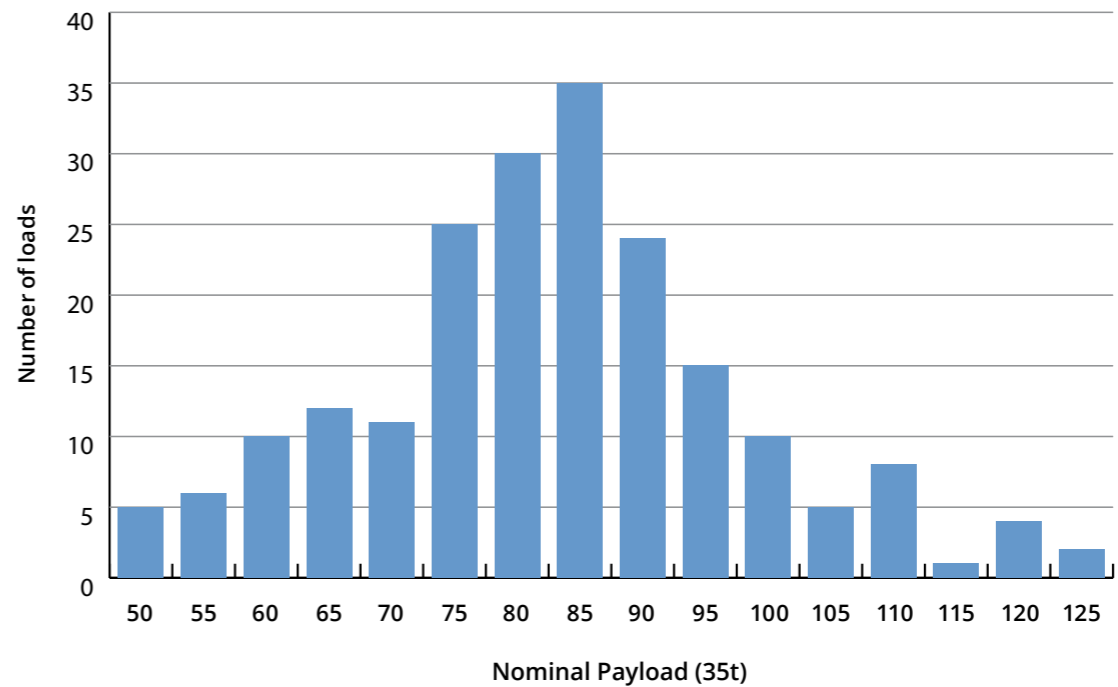
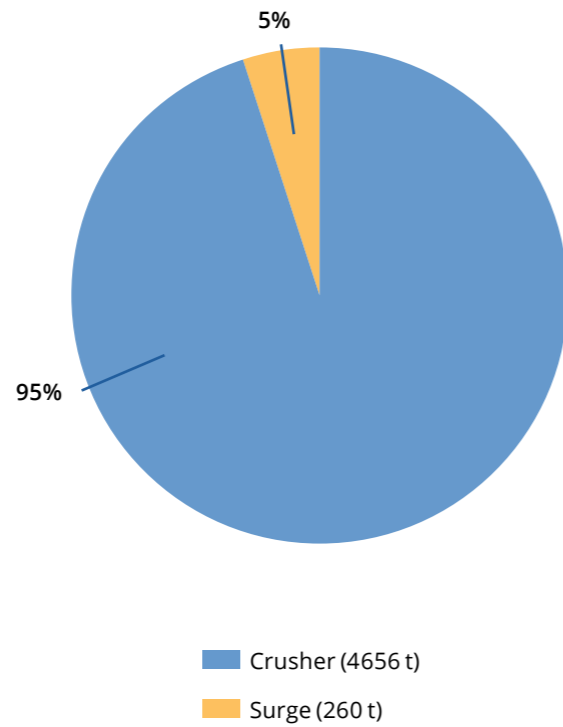
Daily Material Movement

Daily Load and Dump

Haul Productivity Summary

Report Period: Today
Site: ABC Co. Ltd.

Total loads	203	Total tonnage	4916	Average payload	24.2
Distance (km)	346	Downtime	0:01:00	Average cycle time	00:09:34





Product Summary

Product Detailed Report

Haul Productivity Summary

▶ Daily Haul Productivity

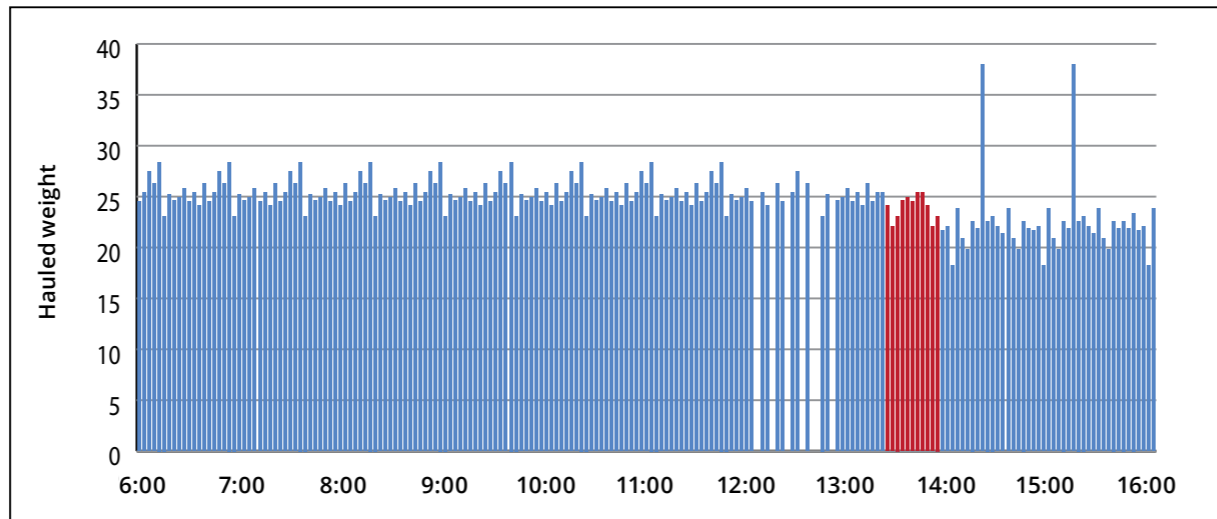
Material Handling Report

Daily Material Movement

Daily Load and Dump

Daily Haul Productivity

Report Period Today
Site ABC Co. Ltd.



Time	Crusher	Surge Stock	Green Surge	Pit	Travelled km	Average Cycle Time	Downtime	%
6:00 AM	512				34.5	8:15	0:07	0
7:00 AM	499				34.7	8:30	0:00	0
8:00 AM	504				35.1	7:45	0:00	0
9:00 AM	508				33.8	7:50	0:00	0
10:00 AM	498				35.1	8:30	0:00	
11:00 AM	500				36.2	8:15	0:00	0
12:00 PM	398				22.1	14:30	1:00:00	33
13:00 PM	255	260			38.7	11:06	0	0
14:00 PM	485				35.1	11:15	0	0
15:00 PM	475				38.1	11:45	0:08	0
16:00 PM	62				5	12:06	2:52	97
Total	4,656	260			346	9:35	4:00	12.1



Product Summary

Product Detailed Report

Haul Productivity Summary

Daily Haul Productivity

▶ Material Handling Report

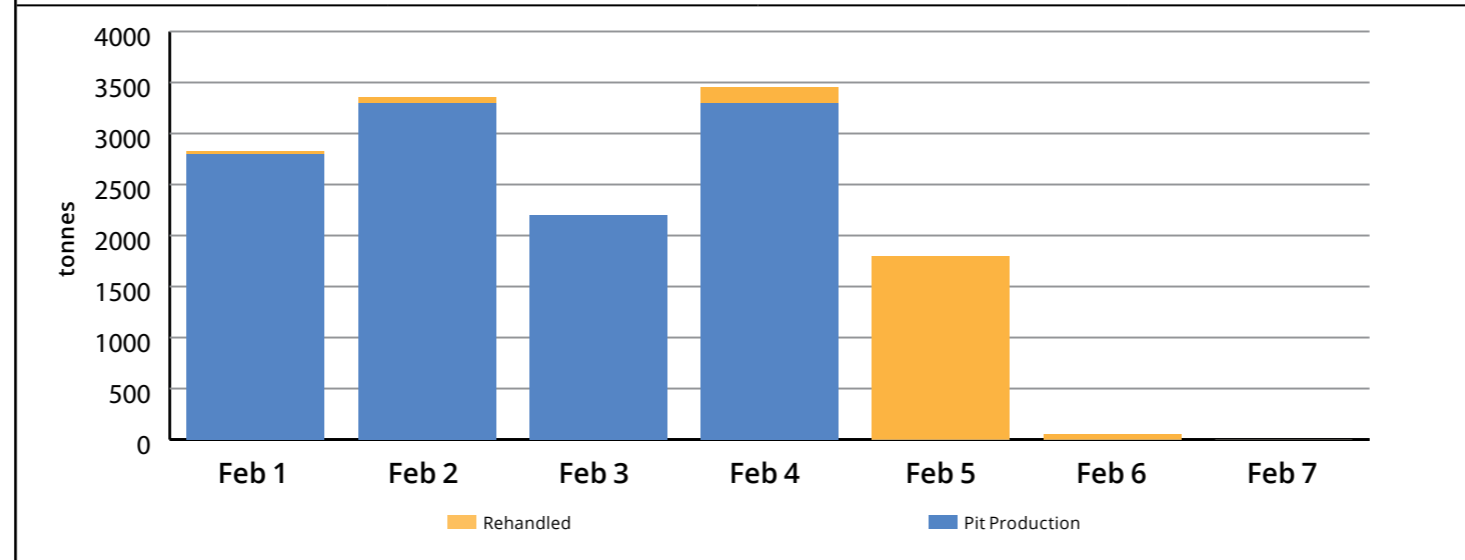
Daily Material Movement

Daily Load and Dump

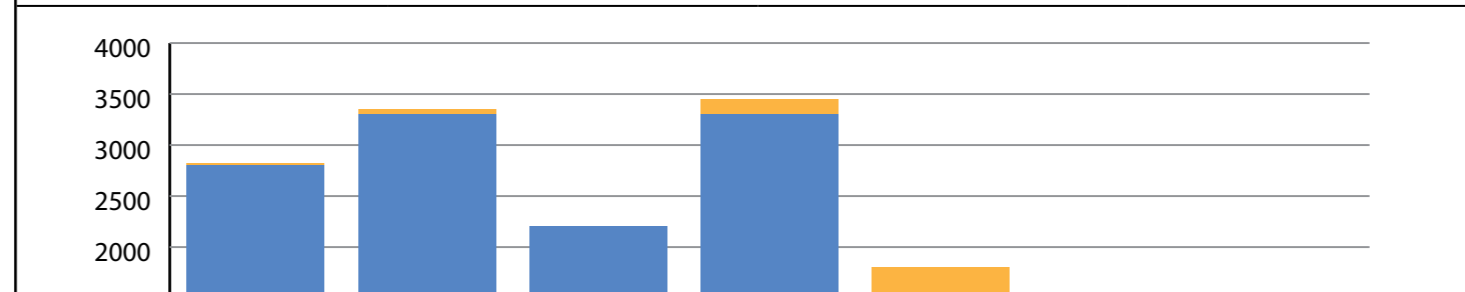
Material Handling Report

Report Period This year
Site ABC Co. Ltd.

Total Hauled Material			
Truck	Pit Production	Re-handled Material	Total
Haul truck 1	203,512	95,330	298,842
Haul truck 2	135,713	78,034	213,747
Haul truck 3	195,621	82,023	277,644
Total	534,846	255,387	790,233



Crusher feed			
Truck	Pit Production	Re-handled Material	Total
Haul truck 1	156,205	57,347	213,552
Haul truck 2	100,021	65,183	165,204
Haul truck 3	145,032	45,213	190,245
Total	401,258	167,743	569,001





Product Summary

Product Detailed Report

Haul Productivity Summary

Daily Haul Productivity

Material Handling Report

▶ Daily Material Movement

Daily Load and Dump

Daily Material Movement

Report Period Today
Site ABC Co. Ltd.





Product Summary

Product Detailed Report

Haul Productivity Summary

Daily Haul Productivity

Material Handling Report

Daily Material Movement

▶ Daily Load and Dump

Daily Load and Dump

Report Period Today
Site ABC Co. Ltd.

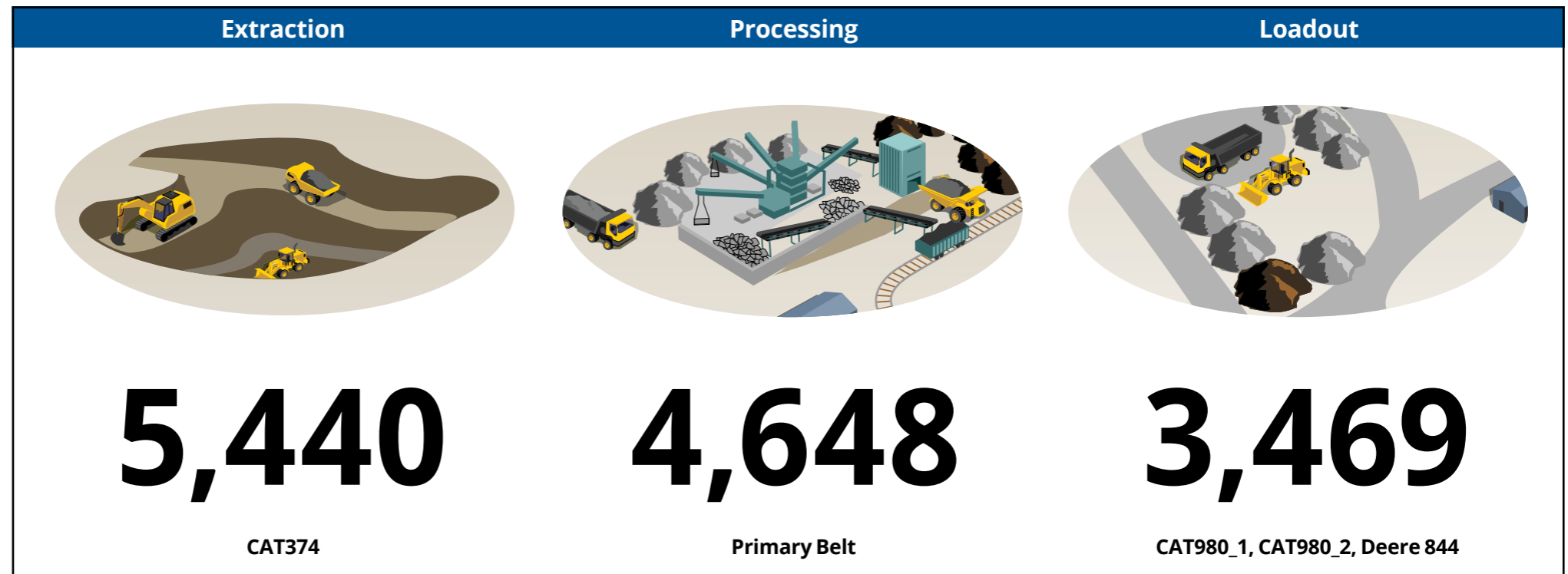




- ▶ Daily Materials Processing
- Conveyor Multi-Site Summary
- Daily Site Production
- Conveyor Downtime
- Conveyor Downtime - 3 Month Comparison
- Conveyor Daily Downtime Detail

Daily Materials Processing

Report Period Today
Site ABC Co. Ltd.





Daily Materials Processing

▶ Conveyor Multi-Site Summary

Daily Site Production

Conveyor Downtime

Conveyor Downtime
- 3 Month Comparison

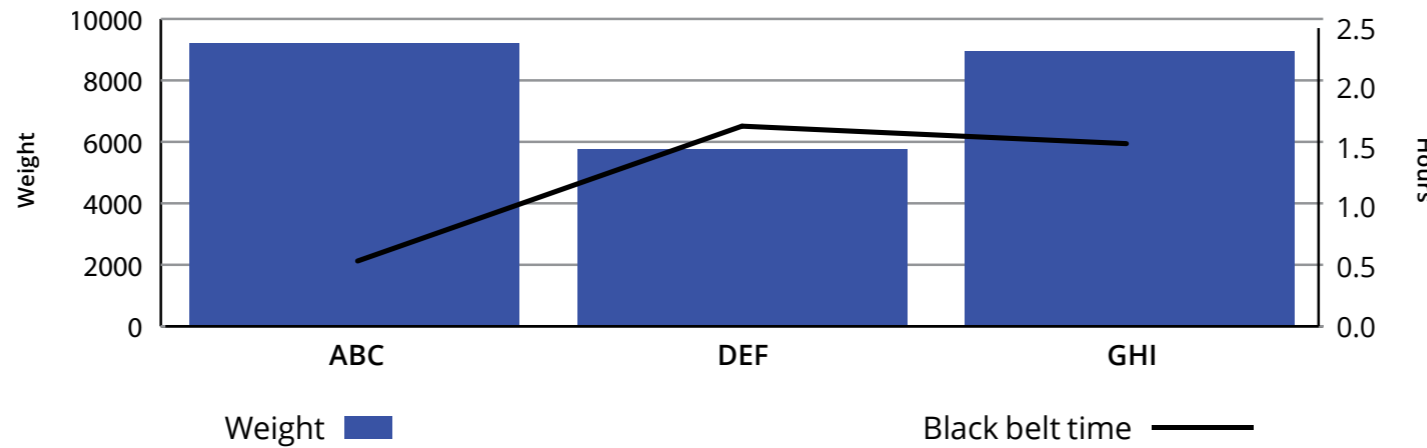
Conveyor Daily Downtime Detail

Conveyor Multi-Site Summary

Report period: Last 4 weeks
 Site: ABC Co. Ltd.
 Region: Northern

Site		Total weight	TPH	Run time	Run time loaded	Black belt time	Black belt %
Quarry A	Primary	4980.12	580	9.04	8.58	0.45	5%
	Product	4223.05	448	9.52	9.42	0.09	1%
Quarry B	Primary	3443.11	408	8.7	8.44	0.26	3%
	Product	2320.63	312	8.85	7.43	1.41	16%
Quarry C	Primary	5412.25	610	10.19	10.06	0.20	13%
	Product	3521.23	350	244.78	10.26	10.06	2%

Bedrock Quarries





Daily Materials Processing

Conveyor Multi-Site Summary

▶ Daily Site Production

Conveyor Downtime

Conveyor Downtime
- 3 Month Comparison

Conveyor Daily Downtime Detail

Daily Site Production

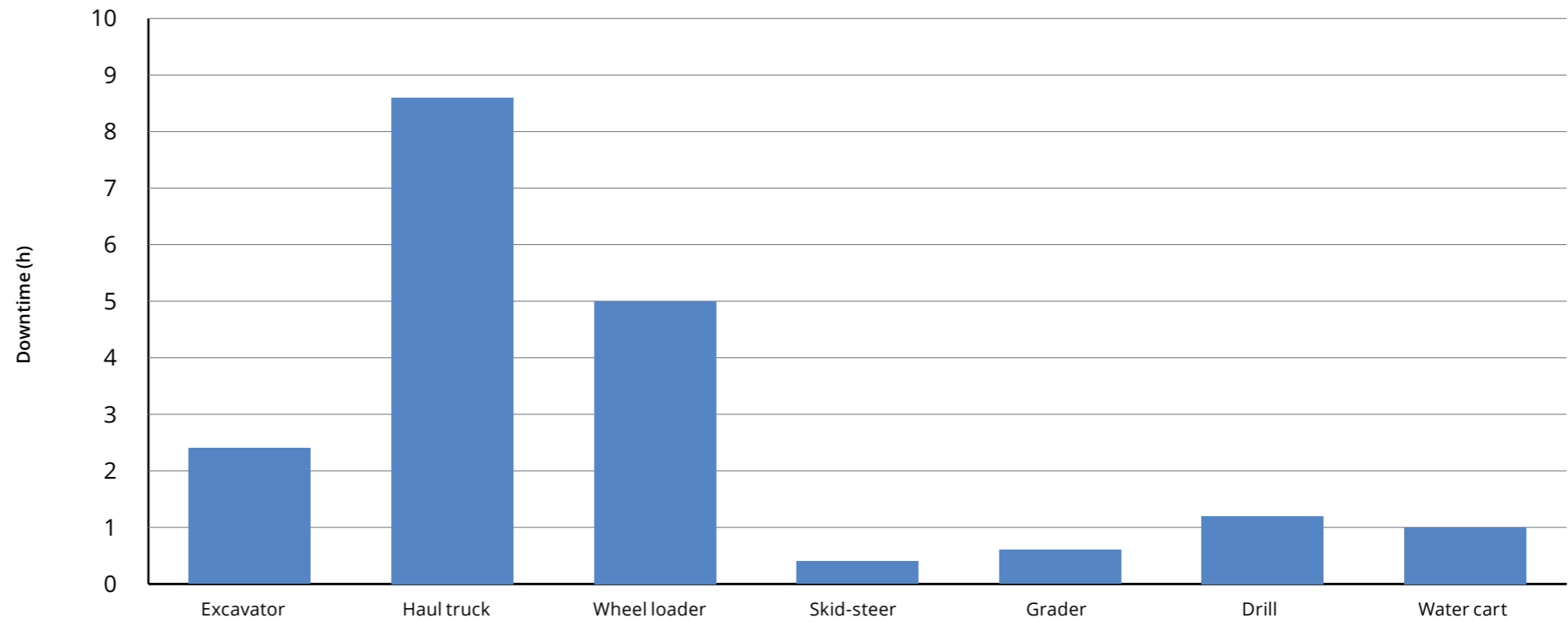
Report period Today
Site ABC Co. Ltd.

	Total		Haul truck 1		Haul truck 2		Haul truck 3		Primary Belt
	loads	tonnes	loads	tonnes	loads	tonnes	loads	tonnes	
Crusher	192	4656	65	1608	60	1364	67	1684	4648
Blue Surge	11	260	3	82	3	86	4	92	
Total	203	4916	68	1690	63	1450	71	1776	
Operating time (hh:mm)	24:00		7:59		6:57		8:04		9:45
Downtime (hh:mm)	0:58		0:00		0:58		0:00		0:30
Blackbelt time (hh:mm)	-		-		-		-		0:32
Top speed (kph)	39.3		39.3		35		36.9		-
Average cycle time (mm:ss)	9:34		9:32		10:20		9:22		-
Average dumping time (mm:ss)	0:42		0:42		0:58		0:38		-
Average loading time (mm:ss)	2:18		2:05		2:35		2:10		-
Fuel usage (l)	-		-		-		-		84%
Distance travelled (km)	346		115		107		120		-
Start time (hh:mm)	5:59		5:59		6:07		6:00		5:50
Stop time (hh:mm)	16:07		16:01		15:52		16:07		17:00
Average load (tonnes)	24.2		25.1		23.2		24.4		494

- Daily Materials Processing
- Conveyor Multi-Site Summary
- Daily Site Production
- ▶ Conveyor Downtime
- Conveyor Downtime - 3 Month Comparison
- Conveyor Daily Downtime Detail

Conveyor Downtime

Report period March 2016
Conveyor Primary Belt
Grouped By Equipment

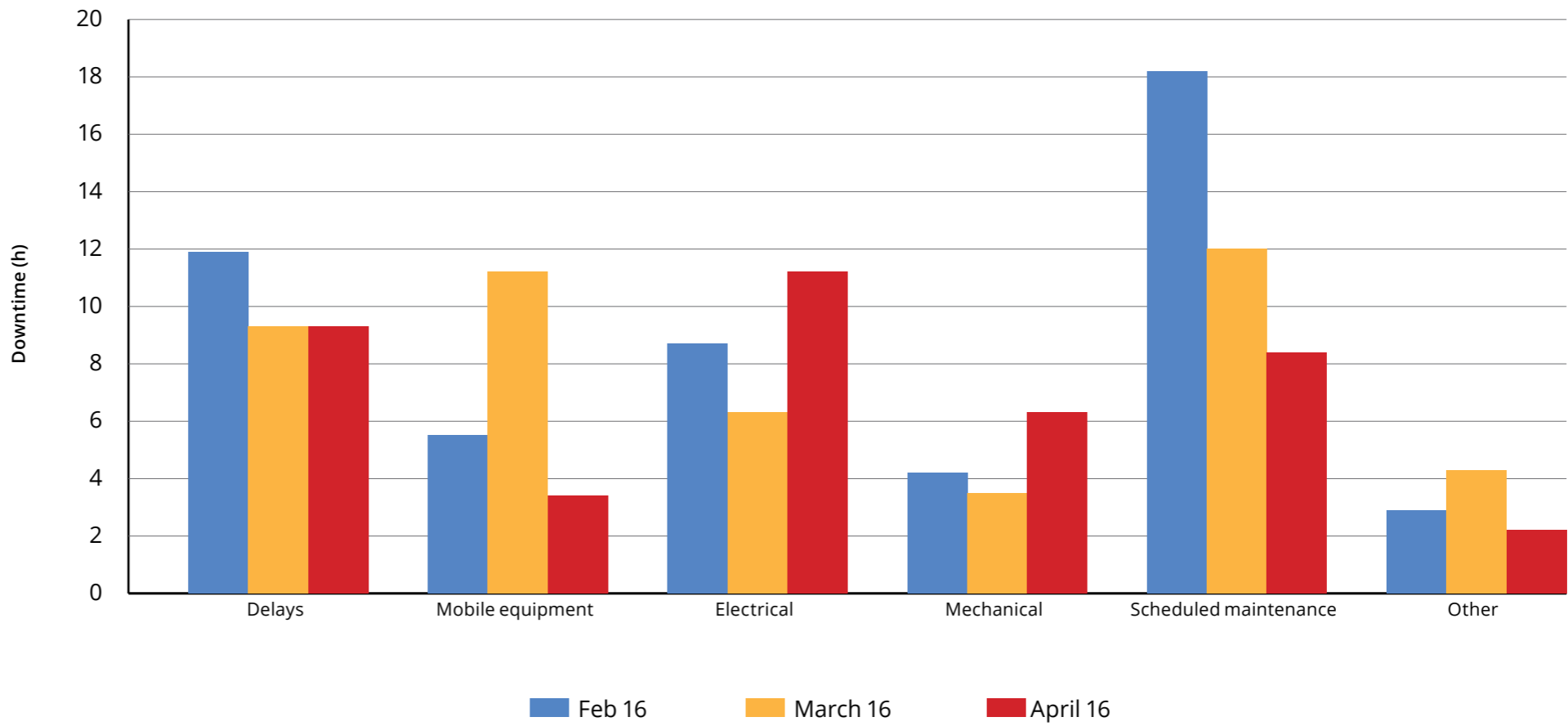




- Daily Materials Processing
- Conveyor Multi-Site Summary
- Daily Site Production
- Conveyor Downtime
- ▶ Conveyor Downtime - 3 Month Comparison
- Conveyor Daily Downtime Detail

Conveyor Downtime - 3 Month Comparison

Conveyor Grouped By Primary Belt Reason





Daily Materials Processing

Conveyor Multi-Site Summary

Daily Site Production

Conveyor Downtime

Conveyor Downtime
- 3 Month Comparison

► Conveyor Daily Downtime Detail

Conveyor Daily Downtime Detail

Report Period: 11/02/2016
Conveyor: Primary Belt

Reason	Sub Reason	Equipment	Sub Equipment	Comment	Time	Duration (min)
Delay	Blockage / spill	Crushing	Jaw		08:31	10.8
					09:04	5.8
					10:28	1.2
				Total		18
						18
	No raw feed	Mobile equipment	Haul truck	One truck down	08:59	17.2
					Total	17.2
	Total				17.0	
	Total					35
Total						35



ADD



EDIT



REMOVE



EXPORT



Loading Accuracy Against Target

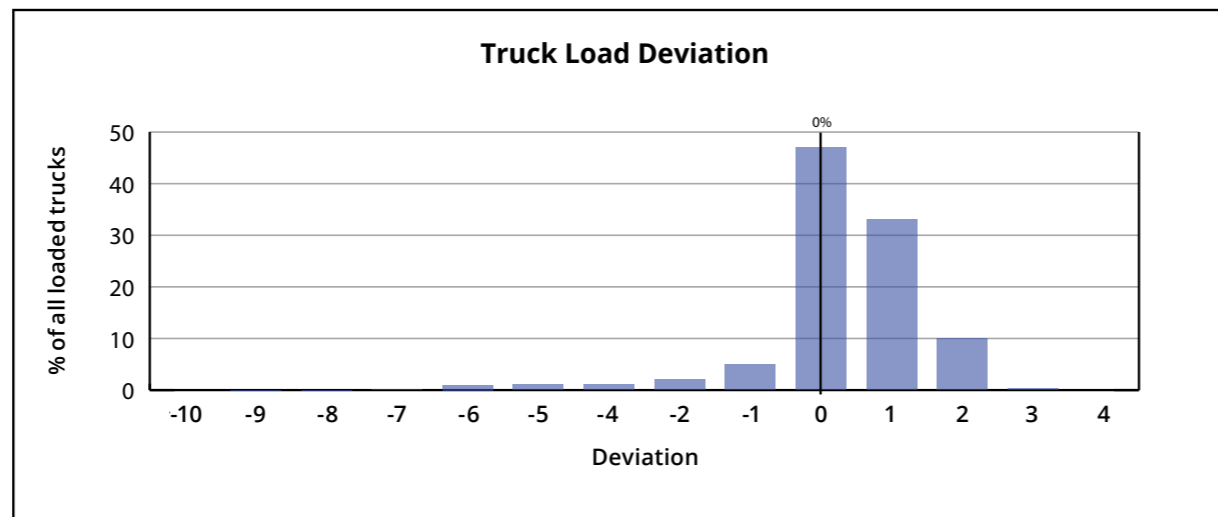
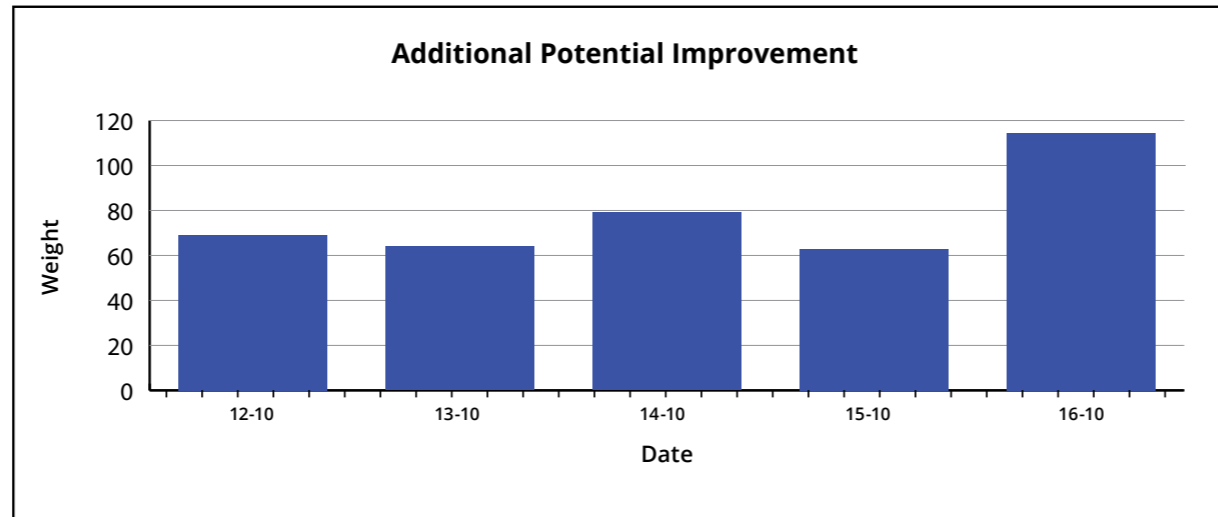
Truck Cycle Time

Truck List Report

Loading Accuracy Against Target

Report Period Today

Total weight	Deviation	Potential Improvement
13,903.4	-2.69%	389.76



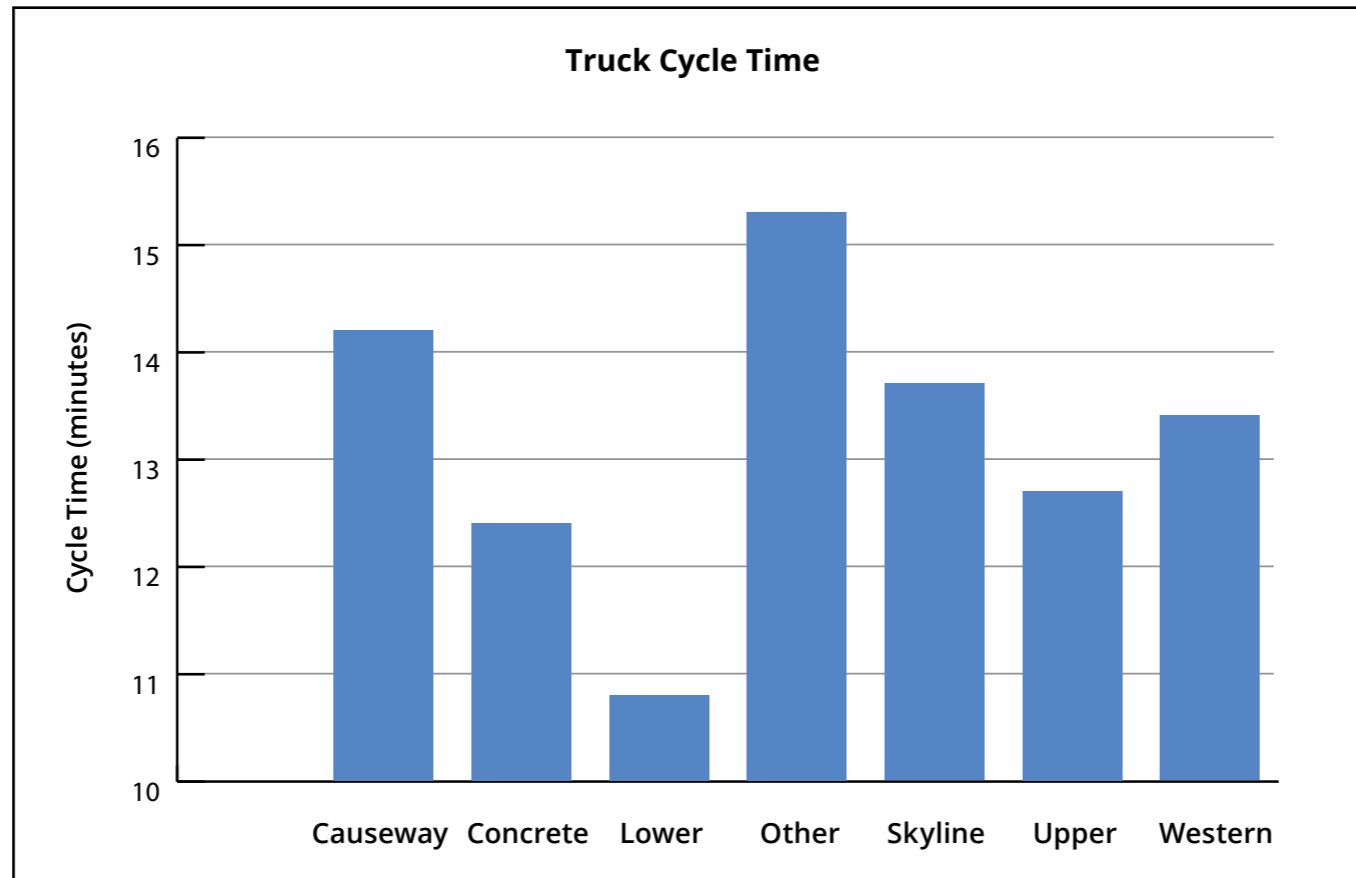
Loading Accuracy Against Target

▶ Truck Cycle Time

Truck List Report

Truck Cycle Time

Report Period: Last month



	Time In	Time Out	Cycle Time (minutes)
			15.2
+Causeway			14.2
+Concrete			12.5
+Lower			10.8
+Other			15.3
+Skyline			13.6
+Upper			12.7



Loading Accuracy Against Target

Truck Cycle Time

▶ Truck List Report

Truck List Report

Report Period This month

Truck	Product	Zone	Machine	Time in	Time out	Weight required	Weight loaded	Weighbridge
ROCK88	ASP PAP5	Concrete	5803	29/06/2017 04:59	5:10:35	37.58	37.14	37.5
BUH505	HUN65	Upper	5804	29/06/2017 04:59	5:12:20	27.2	27.75	27.46
JHL710	GAP40 MR9	Upper	2	29/06/2017 05:01	5:13:35	29.78	29	29.1
R0OCK3	GC148	Concrete	5803	29/06/2017 05:03	5:14:18	26.82	25.76	26.02
HQZ480	GAP40 MR9	Upper	2	29/06/2017 05:02	5:15:08	28.34	28.7	28.62
JUB565	GAP40 MR9	Upper	5804	29/06/2017 05:04	5:15:51	27.78	27.1	26.72
NJWDOG	GAP40 MR9	Upper	2	29/06/2017 05:02	5:16:34	28.38	28.4	28.6
NJWPUP	GAP40 MR9	Upper	5804	29/06/2017 05:03	5:18:14	28.02	28.2	27.98
R0CK51	PAP7	Concrete	5803	29/06/2017 05:06	5:18:59	37.46	37.18	37.78
R0CK59	GC148	Concrete	5803	29/06/2017 05:11	5:21:11	28.96	26.6	26.78
GLDRUN	GAP65 MR8	Upper	5804	29/06/2017 05:12	5:22:08	28.76	28.6	28.36
JAY191	ASP7-5	Causeway	2	29/06/2017 05:06	5:23:35	37.73	38.05	38.3
DDD22	WASH	Central	5803	29/06/2017 05:13	5:24:43	27.7	26.28	26.58
R0CK73	GC107	Concrete	5803	29/06/2017 05:19	5:28:51	28.18	28.32	27.94
R0CK32	GC148	Concrete	5803	29/06/2017 05:22	5:33:33	29.5	27.3	27.48
JQQ205	HUN65	Upper	2	29/06/2017 05:26	5:34:23	26.1	26.35	26.32
R0CK18	ASP PAP5	Concrete	5804	29/06/2017 05:25	5:36:19	36.66	37.35	36.92



- Generic Summary
- Generic Detailed
- Summary Loading
- Detailed Loading

ABC Co. Ltd Summary

Report Period This month
Group by Site ABC Co. Ltd.

Rock Bottom AU

Scale	Product	Data 1	Weight	Records
Loader	100-250 Gabion		485.95	17
Loader	200mm Rockfill		28,589.10	894
Loader	75-150 Gabion		67.35	6
Loader	PROD32		414.30	6
Loader	PROD33		236.25	3
			29,792.95	926



Generic Summary

▶ Generic Detailed

Summary Loading

Detailed Loading

Generic Detailed

Report Period This month
 Group by Site ABC Co. Ltd.

200mm Rockfill

Date / Time	Product	Scale	Operator	Weight
9/15/2016 6:10:05				31.65
9/15/2016 6:15:26				31.60
9/15/2016 6:20:10				31.65
9/15/2016 6:34:40				31.95
9/15/2016 6:43:23				31.95
9/15/2016 6:48:19				30.60
9/15/2016 6:53:14				32.15
9/15/2016 6:57:07				31.90
9/15/2016 7:01:39				32.10
9/15/2016 7:07:51				31.75
9/15/2016 7:49:41				31.55
				348.85



Generic Summary

Generic Detailed

▶ Summary Loading

Detailed Loading

Summary Loading

Report Period This week
 Group by Product
 Site ABC Co. Ltd.

Topsoil

Date	Scale	Operator	Product	Customer	Truck	Data 3	Data 4	Data 5	Data 6	Data 7	Data 8	Weight	Records
10/07/2017	Loader 4		Topsoil	Smith Contracting	JGH696							531.02	28
10/07/2017	Loader 4		Topsoil	Smith Contracting	HJS445							36.48	2
11/07/2017	Loader 4		Topsoil	Smith Contracting	KLM443							91.78	4
												659.28	34

CAP100

Date	Scale	Operator	Product	Customer	Truck	Data 3	Data 4	Data 5	Data 6	Data 7	Data 8	Weight	Records
10/07/2017	Loader 2		CAP100	Smith Contracting	BBT569		207832					18.54	1
												18.54	1

PITRUN

Date	Scale	Operator	Product	Customer	Truck	Data 3	Data 4	Data 5	Data 6	Data 7	Data 8	Weight	Records
10/07/2017	Loader 2		PITRUN	TC Supply	EAQ335		207838					17.72	1
10/07/2017	Loader 2		PITRUN	TC Supply	TAB339		207878					27.32	1
10/07/2017	Loader 2		PITRUN	Green Industries	EOP772		207911					25.50	1
10/07/2017	Loader 2		PITRUN	Green Industries	NSL199		207912					26.14	1
11/07/2017	Loader 7		PITRUN	Green Industries	ALK001		701702					25.90	1
11/07/2017	Loader 7		PITRUN	TC Supply	FMR299		701703					26.10	1
11/07/2017	Loader 7		PITRUN	TC Supply	JJK997		701704					18.04	1



Generic Summary

Generic Detailed

Summary Loading

▶ Detailed Loading

Detailed Loading

Report Period Today
 Group by Product
 Site ABC Co. Ltd.

65

Time	Scale	Operator	Product	Customer	Truck	Data 3	Data 4	Data 5	Data 6	Data 7	Data 8	Weight
12/07/2017 07:13	Loader 2		65	Green Industries	EAQ335		208014					27.36
12/07/2017 08:59	Loader 6		65	TC Supply	TAB339	600626						10.42
12/07/2017 10:04	Loader 6		65	TC Supply	EOP772	600628						11.28
12/07/2017 10:10	Loader 2		65	Green Industries	NSL199		208016					27.82
12/07/2017 10:18	Loader 2		65	Green Industries	ALK001		208017					28.88
12/07/2017 10:22	Loader 2		65	Green Industries	FMR299		208018					25.94
12/07/2017 10:25	Loader 2		65	Green Industries	JJK997		208019					26.00
12/07/2017 11:06	Loader 6		65	TC Supply	HSL191	600630						10.78
12/07/2017 12:19	Loader 2		65	Green Industries	AKK199		208020					25.56
12/07/2017 12:28	Loader 2		65	Green Industries	BYT929		208021					28.30
12/07/2017 12:41	Loader 6		65	TC Supply	BUK922	600632						11.12
12/07/2017 13:02	Loader 2		65	Green Industries	SKH466		208022					28.60
12/07/2017 13:22	Loader 2		65	Green Industries	GUK202		208023					26.10
12/07/2017 13:36	Loader 6		65	TC Supply	LSO390	600634						11.12
12/07/2017 13:40	Loader 2		65	Smith Contracting	NSW198		208025					19.30
												318.58

40

Time	Scale	Operator	Product	Customer	Truck	Data 3	Data 4	Data 5	Data 6	Data 7	Data 8	Weight
12/07/2017 09:35	Loader 2		40	Brown Contracting	BRN298		208015					10.18
12/07/2017 13:36	Loader 2		40	North Contracting	NOR198		208024					1.50