

PATIENT EDUCATION

Semaglutide

HOW DOES IT WORK?

Semaglutide mimics a natural protein found in your body called "GLP-1". This protein signals to your body that it needs to produce insulin.

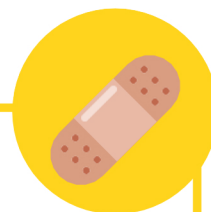
Insulin helps your body take in glucose after you eat a meal, which lowers your blood glucose levels; it can even help with weight loss.



WHAT ARE THE SIDE EFFECTS?

Some common side effects seen in patients: abdominal pain, constipation, diarrhea, nausea, and vomiting. Most of these side effects can be avoided. Reach out to your doctor or pharmacist for advice.

Contact your doctor immediately if you experience any of the following symptoms: unusual swelling, wheezing, or severe abdominal pain.



WHO SHOULD NOT TAKE THIS MEDICATION?

Talk with your doctor about your options if you have the following conditions:

- family history of medullary thyroid carcinoma (MTC)
- multiple endocrine neoplasia syndrome type 2 (MEN2)



HOW DO I TAKE THIS MEDICATION?

You need to inject the medication into a fatty part of your skin: thigh, belly, or upper arm. Rotate the site every week to avoid scarring.

You can take this with or without food. Take it the same day each week. Contact your pharmacist for any additional questions.



WHAT IF I MISS MY DOSE?

Take a missed dose as soon as you think about it. Then, go back to your normal schedule.

If your next scheduled dose is less than 48 hours (2 days), then skip the missed dose. Do NOT take 2 doses within 2 days of each other



HOW SHOULD I STORE THIS MEDICATION?

Store unused syringes in refrigerator. Do not freeze the medication. After opening, the medication can be stored in the fridge or room temperature.

Protect medication from heat and light.



HOW TO ADMINISTER SEMAGLUTIDE

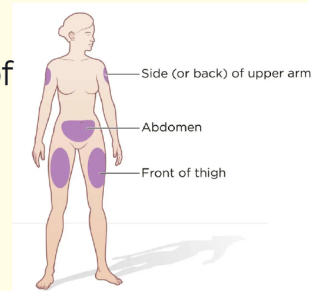
Thoroughly wash your hands



Choose an injection site

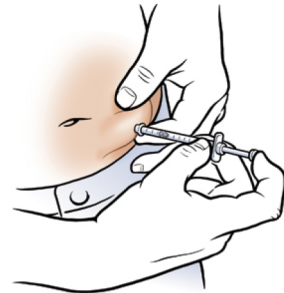
Sides/back of arms, abdomen, or the front of your thighs

Make sure to clean and inspect your injection site



Inject the medication

Take a big pinch of skin between your thumb and index finger and hold it. Inject the needle into the pinched skin at a 90-degree angle. Make sure to do this quickly, but without any great force. Then withdraw needle and apply pressure to injection site.

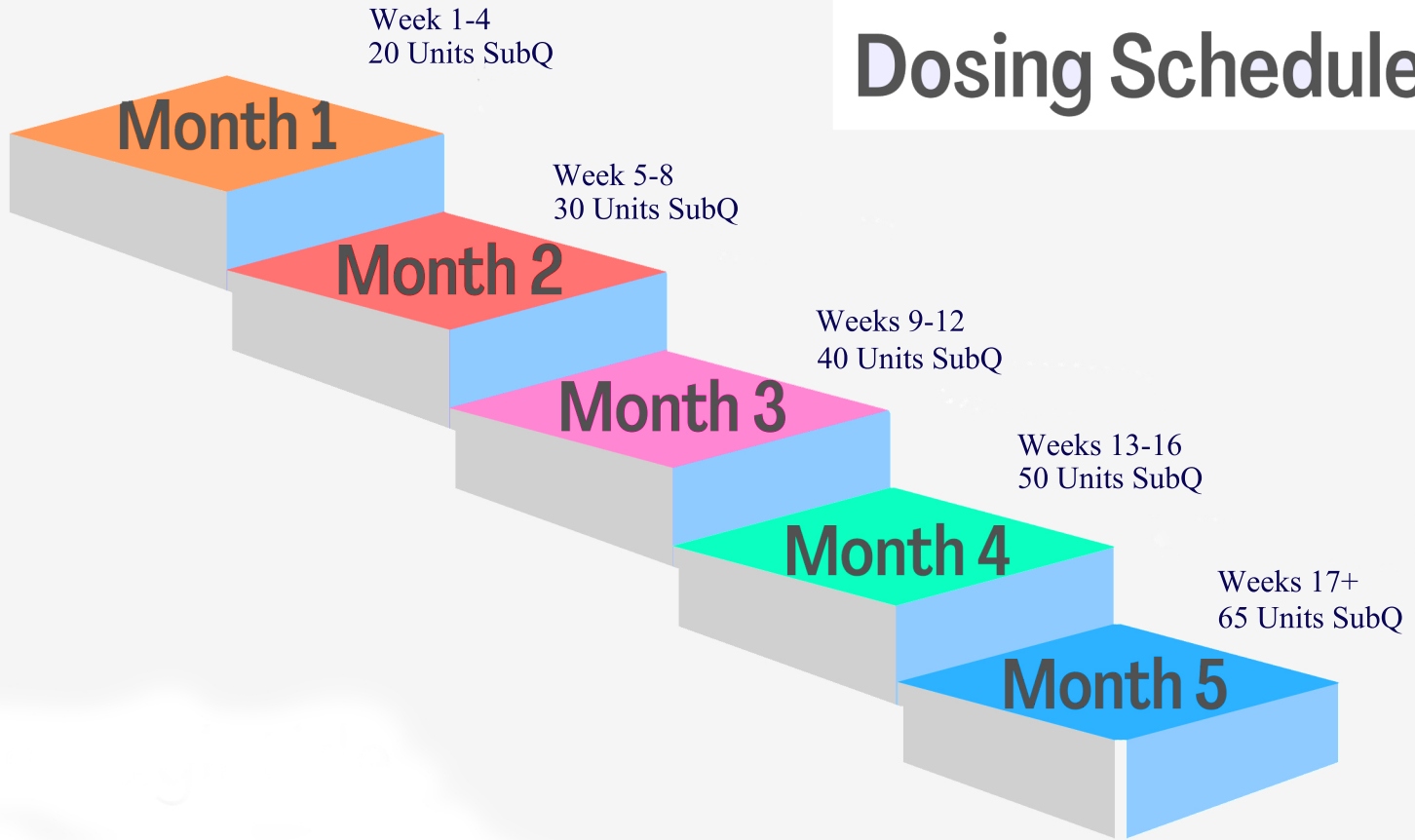


Carefully dispose of needle

Dispose needle in an FDA-cleared sharps disposal container right away after use. If you do not have an FDA-cleared sharps disposal container, you may use a household container that is made of a heavy-duty plastic.



Semaglutide Dosing Schedule



How Wegovy produces weight loss

Wegovy is an injectable medication given on a weekly basis for people with an elevated BMI. It is the first of a new generation of hormonal weight loss drugs accepted by the FDA since 2014. Wegovy officially hit the markets as a treatment option for chronic weight management in 2021.

Free Physician Consult

